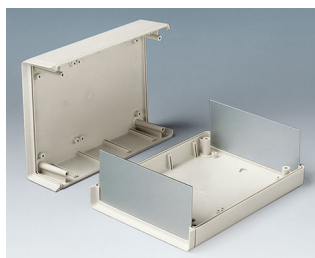
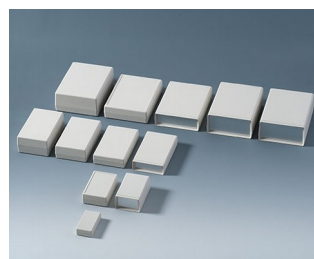


SHELL CASE

Univerzální přístrojové pouzdro

SHELL CASE je k dispozici v různých velikostech, výškách a typech. Vyberte si pouzdro, který vyhovuje Vaším specifickým potřebám!

- 51 pouzder ve třech různých typech:
 - Typ V** - čelní strana otevřená, zadní uzavřená
 - Typ O** - čelní strana otevřená, zadní otevřená
 - Typ G** - čelní strana zavřená, zadní zavřená
- Vysoká stabilita díky obvodovému připojení pera a drážky
- Vodicí lišty pro vertikální instalaci oddílů a desek plošných spojů
- Upevňovací sloupky v horní a spodní části
- Přední a zadní panely vyrobené z hliníku nebo PMMA červené (Plexiglas®) jako příslušenství
- Verze s bateriovým prostorem pro 4 x AA, 2 x AA, 1 x 9 V nebo 2 x 9 V (typy V a G)
- Uzavřená verze (typ G) také se zapuštěnou plochou pro ochranu membránové klávesnice
- Stupeň ochrany do IP 65 v uzavřeném provedení (typ G) bez schránky na baterie a při použití sady těsnění (příslušenství)
- EMC: na požádání můžete také obdržet SHELL CASE s hliníkovým povlakem; kontakt lze zlepšit prostřednictvím nabízených kontaktních pásů (příslušenství)
- Konzoly pro montáž na stěnu / nástěnný držák nastavte jako příslušenství
- Další funkce s univerzálním příslušenstvím



SHELL CASE

Aplikace a příklady

- Měření a řízení
- Lékařská a laboratorní technika
- Periferní zařízení, spínače a modemy



Magnetic metal detector



System for leak detection in leisure vehicles



Teleservice Gateway MGW/865

Přizpůsobení možností

Co ještě potřebujete pro svůj vlastní velmi osobní produkt? Můžeme dodat zapouzdření a ladicí knoflíky se všemi nezbytnými úpravami pro montáž vašich elektronických součástek. Možnosti přizpůsobení pro Shell Case



Mechanické
opracování



Lakování



Tisk



Laserové značení



Dekorační fólie



Zakázkový materiál



Stínění EMC



Kompletace / Montáž

SHELL CASE

Vyberte verze



A9404331
SHELL-TYPE CASES G 85,
Vers. I
ABS (UL 94 HB)
off-white RAL 9002
45x85x22mm
IP 65 opt.



A9404333
SHELL-TYPE CASES V 85,
Vers. I
ABS (UL 94 HB)
off-white RAL 9002
45x85x22mm



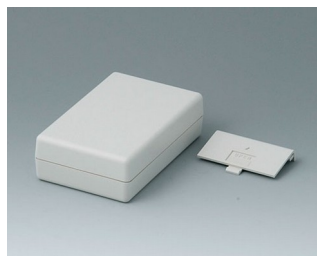
A9404341
SHELL-TYPE CASES G 85,
Vers. I
ABS (UL 94 HB)
off-white RAL 9002
45x85x33mm
IP 65 opt.



A9404441
SHELL-TYPE CASES G 85,
Vers. I
ABS (UL 94 HB)
off-white RAL 9002
45x85x45mm
IP 65 opt.



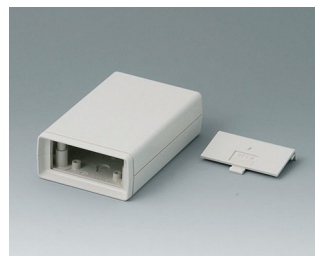
A9406331
SHELL-TYPE CASES G 110,
Vers. I
ABS (UL 94 HB)
off-white RAL 9002
72x114x33mm
IP 65 opt.



A9406332
SHELL-TYPE CASES G 110,
Vers. II
ABS (UL 94 HB)
off-white RAL 9002
72x114x33mm



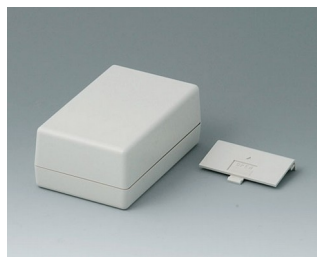
A9406333
SHELL-TYPE CASES V 110,
Vers. I
ABS (UL 94 HB)
off-white RAL 9002
72x114x33mm



A9406334
SHELL-TYPE CASES V 110,
Vers. II
ABS (UL 94 HB)
off-white RAL 9002
72x114x33mm



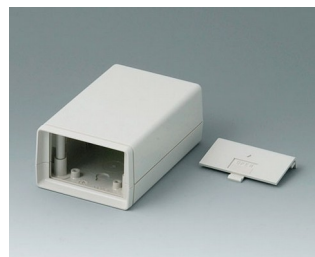
A9406341
SHELL-TYPE CASES G 110,
Vers. I
ABS (UL 94 HB)
off-white RAL 9002
72x114x45mm
IP 65 opt.



A9406342
SHELL-TYPE CASES G 110,
Vers. II
ABS (UL 94 HB)
off-white RAL 9002
72x114x45mm



A9406343
SHELL-TYPE CASES V 110,
Vers. I
ABS (UL 94 HB)
off-white RAL 9002
72x114x45mm

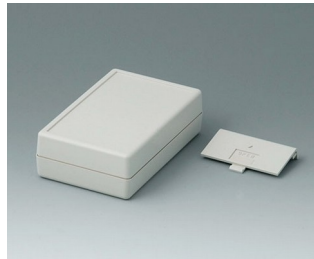


A9406344
SHELL-TYPE CASES V 110,
Vers. II
ABS (UL 94 HB)
off-white RAL 9002
72x114x45mm

SHELL CASE



A9406351
SHELL-TYPE CASES G 110,
Vers. I
ABS (UL 94 HB)
off-white RAL 9002
72x114x33,5mm
IP 65 opt.



A9406352
SHELL-TYPE CASES G 110,
Vers. II
ABS (UL 94 HB)
off-white RAL 9002
72x114x33,5mm



A9406441
SHELL-TYPE CASES G 110,
Vers. I
ABS (UL 94 HB)
off-white RAL 9002
72x114x57mm
IP 65 opt.



A9406443
SHELL-TYPE CASES V 110,
Vers. I
ABS (UL 94 HB)
off-white RAL 9002
72x114x57mm



A9408330
SHELL-TYPE CASES O 155,
Vers. I
ABS (UL 94 HB)
off-white RAL 9002
95x158x33mm



A9408331
SHELL-TYPE CASES G 155,
Vers. I
ABS (UL 94 HB)
off-white RAL 9002
95x158x33mm
IP 65 opt.



A9408333
SHELL-TYPE CASES V 155,
Vers. I
ABS (UL 94 HB)
off-white RAL 9002
95x158x33mm



A9408335
SHELL-TYPE CASES G 155,
Vers. IV
ABS (UL 94 HB)
off-white RAL 9002
95x158x33mm



A9408336
SHELL-TYPE CASES V 155,
Vers. IV
ABS (UL 94 HB)
off-white RAL 9002
95x158x33mm



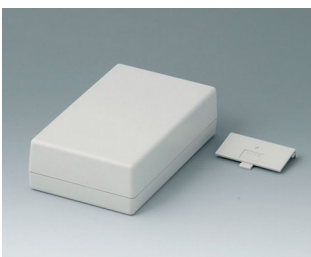
A9408340
SHELL-TYPE CASES O 155,
Vers. I
ABS (UL 94 HB)
off-white RAL 9002
95x158x45mm



A9408341
SHELL-TYPE CASES G 155,
Vers. I
ABS (UL 94 HB)
off-white RAL 9002
95x158x45mm
IP 65 opt.



A9408343
SHELL-TYPE CASES V 155,
Vers. I
ABS (UL 94 HB)
off-white RAL 9002
95x158x45mm



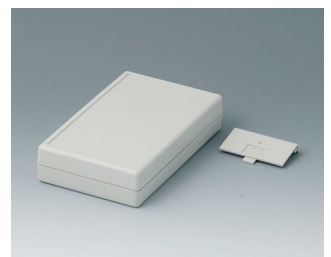
A9408345
SHELL-TYPE CASES G 155,
Vers. IV
ABS (UL 94 HB)
off-white RAL 9002
95x158x45mm



A9408346
SHELL-TYPE CASES V 155,
Vers. IV
ABS (UL 94 HB)
off-white RAL 9002
95x158x45mm



A9408351
SHELL-TYPE CASES G 155,
Vers. I
ABS (UL 94 HB)
off-white RAL 9002
95x158x33,5mm
IP 65 opt.



A9408355
SHELL-TYPE CASES G 155,
Vers. IV
ABS (UL 94 HB)
off-white RAL 9002
95x158x33,5mm

SHELL CASE



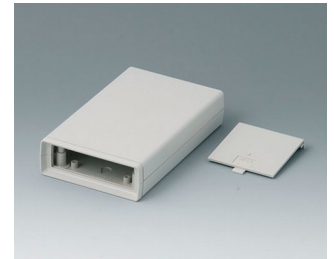
A9408440
SHELL-TYPE CASES O 155,
Vers. I
ABS (UL 94 HB)
off-white RAL 9002
95x155x57mm



A9408441
SHELL-TYPE CASES G 155,
Vers. I
ABS (UL 94 HB)
off-white RAL 9002
95x158x57mm
IP 65 opt.



A9408443
SHELL-TYPE CASES V 155,
Vers. I
ABS (UL 94 HB)
off-white RAL 9002
95x158x57mm



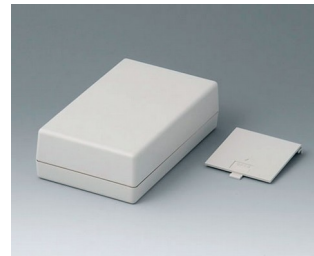
A9408638
SHELL-TYPE CASES V 155,
Vers. V
ABS (UL 94 HB)
off-white RAL 9002
95x158x33mm



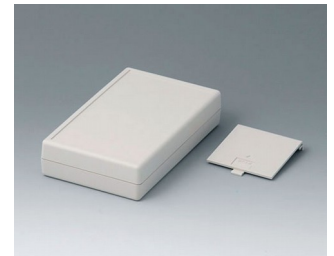
A9408648
SHELL-TYPE CASES V 155,
Vers. V
ABS (UL 94 HB)
off-white RAL 9002
95x158x45mm



A9408737
SHELL-TYPE CASES G 155,
Vers. V
ABS (UL 94 HB)
off-white RAL 9002
95x158x33mm



A9408747
SHELL-TYPE CASES G 155,
Vers. V
ABS (UL 94 HB)
off-white RAL 9002
95x158x45mm



A9408757
SHELL-TYPE CASES G 155,
Vers. V
ABS (UL 94 HB)
off-white RAL 9002
95x158x33,5mm



A9413330
SHELL-TYPE CASES O 190,
Vers. I
ABS (UL 94 HB)
off-white RAL 9002
138x190x45mm



A9413331
SHELL-TYPE CASES G 190,
Vers. I
ABS (UL 94 HB)
off-white RAL 9002
138x190x45mm
IP 65 opt.



A9413333
SHELL-TYPE CASES V 190,
Vers. I
ABS (UL 94 HB)
off-white RAL 9002
138x190x45mm



A9413340
SHELL-TYPE CASES O 190,
Vers. I
ABS (UL 94 HB)
off-white RAL 9002
138x190x68mm



A9413341
SHELL-TYPE CASES G 190,
Vers. I
ABS (UL 94 HB)
off-white RAL 9002
138x190x68mm
IP 65 opt.



A9413343
SHELL-TYPE CASES V 190,
Vers. I
ABS (UL 94 HB)
off-white RAL 9002
138x190x68mm



A9413351
SHELL-TYPE CASES G 190,
Vers. I
ABS (UL 94 HB)
off-white RAL 9002
138x190x45,5mm
IP 65 opt.



A9413440
SHELL-TYPE CASES O 190,
Vers. I
ABS (UL 94 HB)
off-white RAL 9002
138x190x91mm

SHELL CASE



A9413441
SHELL-TYPE CASES G 190,
Vers. I
ABS (UL 94 HB)
off-white RAL 9002
138x190x91mm
IP 65 opt.



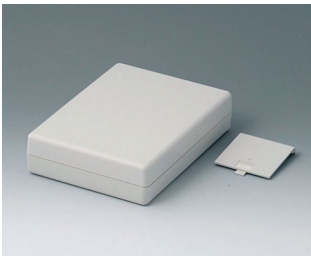
A9413443
SHELL-TYPE CASES V 190,
Vers. I
ABS (UL 94 HB)
off-white RAL 9002
138x190x91mm



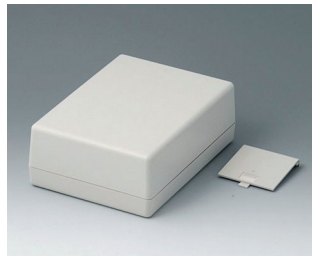
A9413638
SHELL-TYPE CASES V 190,
Vers. V
ABS (UL 94 HB)
off-white RAL 9002
138x190x45mm



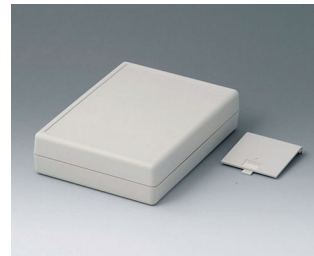
A9413648
SHELL-TYPE CASES V 190,
Vers. V
ABS (UL 94 HB)
off-white RAL 9002
138x190x68mm



A9413737
SHELL-TYPE CASES G 190,
Vers. V
ABS (UL 94 HB)
off-white RAL 9002
138x190x45mm



A9413747
SHELL-TYPE CASES G 190,
Vers. V
ABS (UL 94 HB)
off-white RAL 9002
138x190x68mm

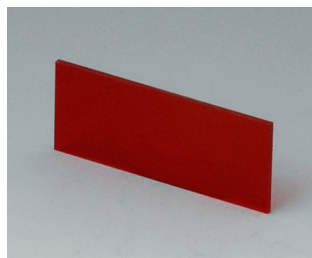


A9413757
SHELL-TYPE CASES G 190,
Vers. V
ABS (UL 94 HB)
off-white RAL 9002
138x190x45,5mm

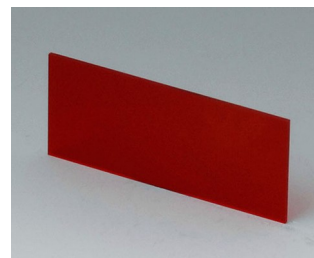
Accessory to complete



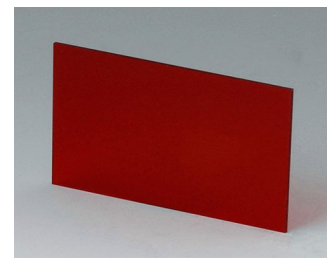
A9104111
Front / rear panel V 85
Aluminium
matt anodised
36x14,6x1mm



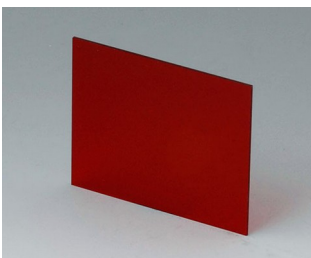
A9104113
Front / rear panel V 85
Acrylglas
red transparent
36x14,6x1mm



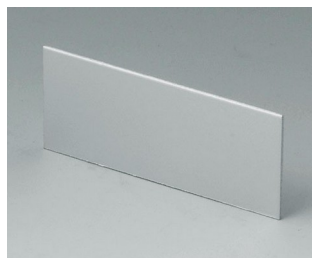
A9106113
Front / rear panel V 110
Acrylglas
red transparent
59,3x25x1mm



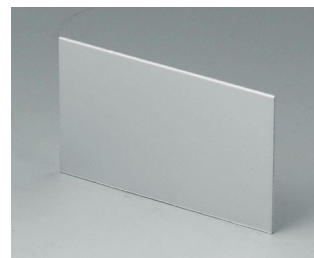
A9106123
Front / rear panel V 110
Acrylglas
red transparent
59,3x37x1mm



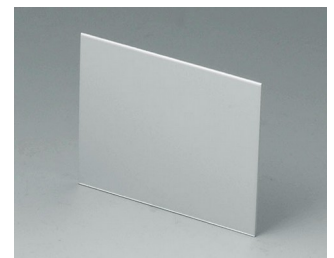
A9106223
Front / rear panel V 110
Acrylglas
red transparent
59,3x49x1mm



A9107111
Front / rear panel V 110
Aluminium
matt anodised
59,3x25x1mm

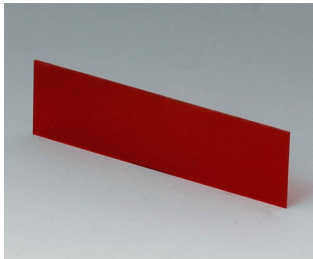


A9107121
Front / rear panel V 110
Aluminium
matt anodised
59,3x37x1mm

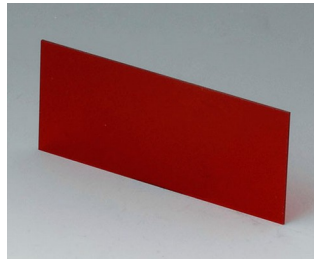


A9107221
Front / rear panel V 110
Aluminium
matt anodised
59,3x49x1mm

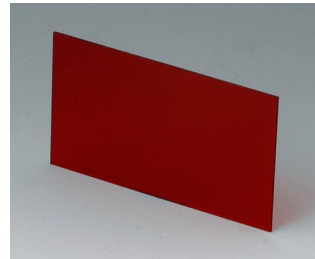
SHELL CASE



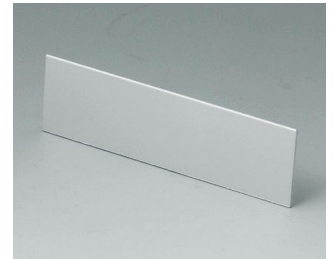
A9108113
Front / rear panel V, O 155
Acrylglas
red transparent
81,9x23,6x1mm



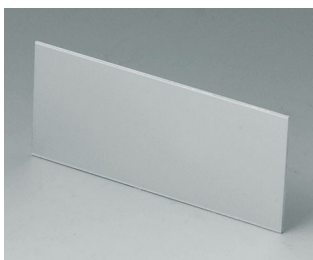
A9108123
Front / rear panel V, O 155
Acrylglas
red transparent
81,9x35,6x1mm



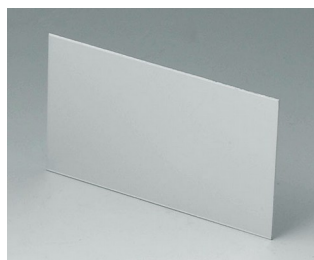
A9108223
Front / rear panel V, O 155
Acrylglas
red transparent
81,9x47,6x1mm



A9109111
Front / rear panel V, O 155
Aluminium
matt anodised
81,9x23,6x1mm



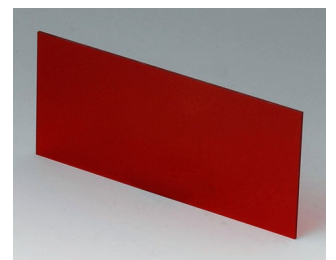
A9109121
Front / rear panel V, O 155
Aluminium
matt anodised
81,9x35,6x1mm



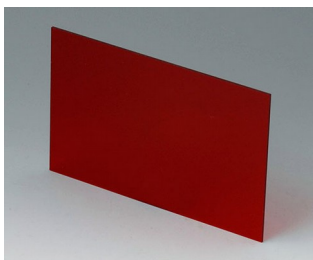
A9109221
Front / rear panel V, O 155
Aluminium
matt anodised
81,9x47,6x1mm



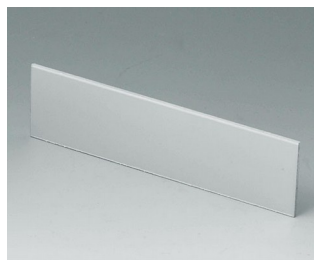
A9113113
Front / rear panel V, O 190
Acrylglas
red transparent
124,2x33,6x1,5mm



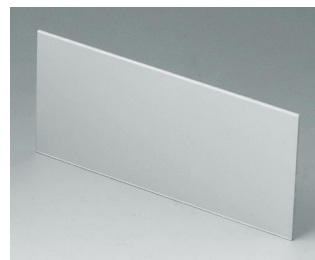
A9113123
Front / rear panel V, O 190
Acrylglas
red transparent
124,2x56,6x1,5mm



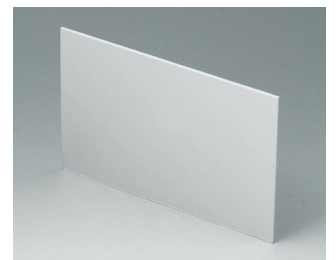
A9113223
Front / rear panel V, O 190
Acrylglas
red transparent
124,2x79,6x1,5mm



A9114111
Front / rear panel V, O 190
Aluminium
matt anodised
124,2x33,6x1,5mm

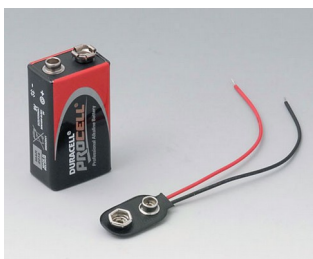


A9114121
Front / rear panel V, O 190
Aluminium
matt anodised
124,2x56,6x1,5mm



A9114221
Front / rear panel V, O 190
Aluminium
matt anodised
124,2x79,6x1,5mm

Accessory "battery"



A9160003
Plug-in contact, 1 x 9 V (PP3)



A9190013
Set of battery clips, 4 x AA
Steel
nickel-plated



A9190014
Set of battery clips, 2 x AA
Steel
nickel-plated



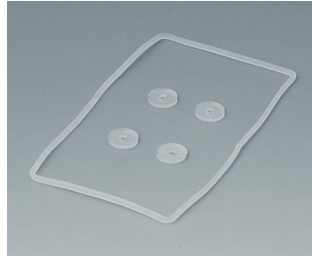
A9250250
Battery spacer
PE foam
50x25x4mm

SHELL CASE

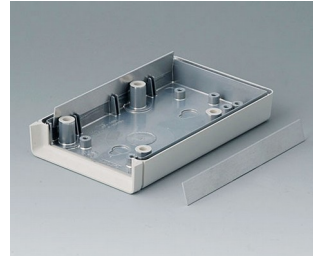
Accessory "protection"



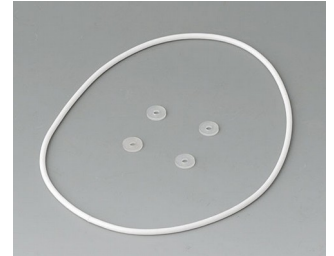
A9104073
 Contact-strips V, G 85
 Aluminium



A9104250
 Sealing kit G 85



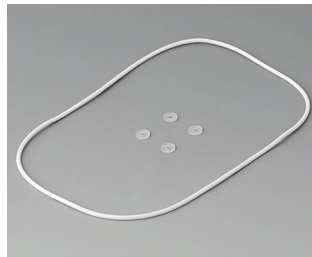
A9106095
 Contact-strips V, G 110
 Aluminium



A9106352
 Sealing kit G 110



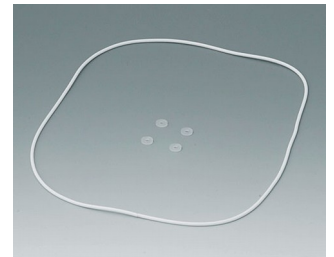
A9108120
 Contact-strips V, O, G 155
 Aluminium



A9108486
 Sealing kit G 155



A9113150
 Contact-strips V, O, G 190
 Aluminium

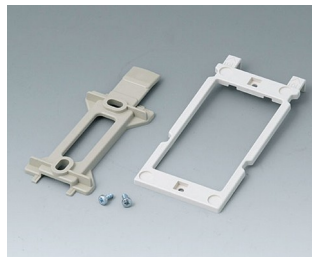


A9113630
 Sealing kit G 190

Accessory "wall/holder"



A9204108
 Wall mounting brackets
 PA 6
 pebble grey RAL 7032



B1350048
 Wall suspension elements
 ABS (UL 94 HB)
 pebble grey RAL 7032



B1360048
 Wall suspension elements
 ABS (UL 94 HB)
 pebble grey RAL 7032

Accessory "carrying"



A9100001
 Ring eyelet
 PA 6
 volcano



A9100002
 Ring eyelet
 PA 6
 volcano



A9172107
 Belt/Pocket clip
 ABS (UL 94 HB)
 off-white RAL 9002
 62x30mm

SHELL CASE

Accessory "screws"



A0306031
Self-tapping screws 3 x 6 mm
(PZ1)

Accessory



A9207150
Anti-slide feet 6.5 x 2 mm
transparent



A9210290
Anti-slide feet 9.5 x 3.8 mm
transparent



A9250807
Tilt foot bar
ABS (UL 94 HB)
off-white RAL 9002



A9250817
Tilt foot bar
ABS (UL 94 HB)
off-white RAL 9002

Subject to technical modification without notice. © by OKW Gehäusesysteme, Buchen/Germany.