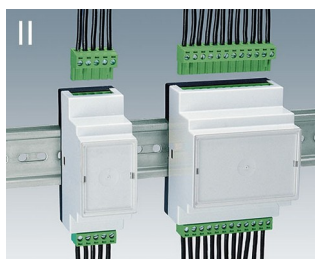
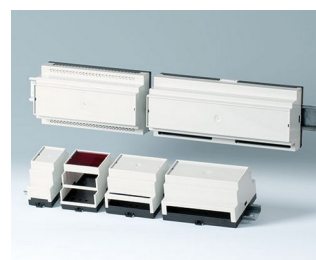


RAILTEC B

Mnohostranná pouzdra na DIN lištu

Jednoduchá a rychlá instalace na DIN lištu podle normy EN 60715 TH35 charakterizuje skupinu skříní RAILTEC B.

- 6 velikostí (2-12 modulů) v odkazu na DIN 43880, velikost 1;
4 velikosti (2, 4, 6 a 9 modulů) s plochou horní částí;
4 velikosti (2, 4, 6 a 9 modulů)
- Plně izolované a bezpečné na dotyk podle VBG 4 a IEC 529 / DIN VDE 0470-1
- Materiál zpomalující hoření (UL 94 V-0)
- **Provedení I a XI:** pro terminály PCB 5,0 / 5,08
- **Provedení II a XII:** pro záhlaví pinů 5,0 / 5,08
- **Provedení III a XIII:** uzavřené uzávěry, např. pro přední konektory, konektory D-SUB atd.
- **Provedení IV:** pro svislé tiskové terminály 5,0 / 5,08 (pouze zdola)
- **Provedení V:** s 5,0 mřížkovými perforacemi
- **Provedení VI:** otevřete schránky pro jednotlivé kombinace (krytí / dělič)
- Kryt konektorů KNX vhodný pro šířky modulů 2 a 4 (provedení VI nebo pouzdro s plochou horní částí)
- Vhodné pro DIN lišty EN 60715 TH35 nebo přímé namontování na stěnu
- Bez / s větracími štěrbinami pro dobrý odvod tepla
- Flexibilní umístění: Umístění desek plošných spojů ve všech třech prostorových směrech; Dolní část s upevňovacími komorami, horní část s vodičky
- Uzavírací klip předmontovaný v dolní části
- Průhledné víko (příslušenství pro vysoké verze) chrání zobrazovací a ovládací prvky
- Stupeň ochrany < IP40
- **NEW:** RAILTEC BP, M22 – Panel version with pluggable side panels and front panel. Simple and quick assembly and fast mounting onto DIN rails EN 60715 TH35. Optional hinged transparent cover (accessory).



RAILTEC B

Aplikace a příklady

- Univerzální použití jako montážní pouzdro
- Podle specifikací strojírenského a automobilového průmyslu
- Zvláště vhodné pro řídicí techniku



CAN BUS system module for packaging machines



Earthfault detection and short-circuit indicator



Industrial VDSL2/ADSL2 modems



Monitoring of electrical variables



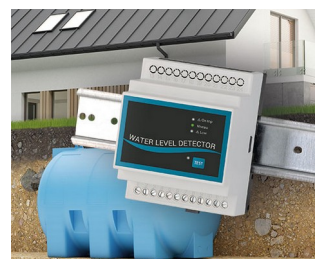
Power measuring device for energy analysis



Remote meter for condition monitoring



Smart meter for electricity consumption



Water level detector

Přizpůsobení možností

Co ještě potřebujete pro svůj vlastní velmi osobní produkt? Můžeme dodat zapouzdření a ladicí knoflíky se všemi nezbytnými úpravami pro montáž vašich elektronických součástek.

Možnosti přizpůsobení pro Railtec B



Mechanické
opracování



Lakování



Tisk



Laserové značení



Dekorační fólie



Kompletace / Montáž

RAILTEC B

Vyberte verze



B6501110
RAILTEC B, 2 modules, Vers. V
PC (UL 94 V-0)
light grey RAL 7035
35x86x58mm



B6501111
RAILTEC B, 2 modules, Vers. I
PC (UL 94 V-0)
light grey RAL 7035
35x86x58mm



B6501112
RAILTEC B, 2 modules, Vers. II
PC (UL 94 V-0)
light grey RAL 7035
35x86x58mm



B6501113
RAILTEC B, 2 modules, Vers. III
PC (UL 94 V-0)
light grey RAL 7035
35x86x58mm



B6501114
RAILTEC B, 2 modules, Vers. I
PC (UL 94 V-0)
light grey RAL 7035
35x86x58mm



B6501115
RAILTEC B, 2 modules, Vers. II
PC (UL 94 V-0)
light grey RAL 7035
35x86x58mm



B6501116
RAILTEC B, 2 modules, Vers. III
PC (UL 94 V-0)
light grey RAL 7035
35x86x58mm



B6501117
RAILTEC B, 2 modules, Vers. IV
PC (UL 94 V-0)
light grey RAL 7035
35x86x58mm



B6501118
RAILTEC B, 2 modules, Vers. IV
PC (UL 94 V-0)
light grey RAL 7035
35x86x58mm



B6501119
RAILTEC B, 2 modules, Vers. V
PC (UL 94 V-0)
light grey RAL 7035
35x86x58mm



B6501121
RAILTEC B, 2 modules, Vers. VI
PC (UL 94 V-0)
light grey RAL 7035
35x90x58mm



B6501223
RAILTEC B, 2 modules, Vers. III
low profile
PC (UL 94 V-0)
light grey RAL 7035
35x86x31,25mm



B6501229
RAILTEC B, 2 modules, Vers.
low profile
PC (UL 94 V-0)
light grey RAL 7035
35x89,6x31,25mm



B6502110
RAILTEC B, 3 modules, Vers. V
PC (UL 94 V-0)
light grey RAL 7035
52,5x86x58mm

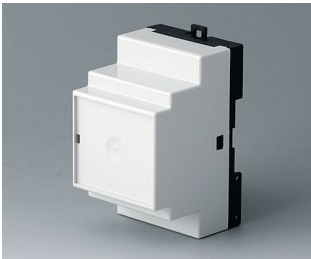


B6502111
RAILTEC B, 3 modules, Vers. I
PC (UL 94 V-0)
light grey RAL 7035
52,5x86x58mm



B6502112
RAILTEC B, 3 modules, Vers. II
PC (UL 94 V-0)
light grey RAL 7035
52,5x86x58mm

RAILTEC B



B6502113
RAILTEC B, 3 modules, Vers. III
PC (UL 94 V-0)
light grey RAL 7035
52,5x86x58mm



B6502114
RAILTEC B, 3 modules, Vers. I
PC (UL 94 V-0)
light grey RAL 7035
52,5x86x58mm



B6502115
RAILTEC B, 3 modules, Vers. II
PC (UL 94 V-0)
light grey RAL 7035
52,5x86x58mm



B6502116
RAILTEC B, 3 modules, Vers. III
PC (UL 94 V-0)
light grey RAL 7035
52,5x86x58mm



B6502117
RAILTEC B, 3 modules, Vers. IV
PC (UL 94 V-0)
light grey RAL 7035
52,5x86x58mm



B6502118
RAILTEC B, 3 modules, Vers. IV
PC (UL 94 V-0)
light grey RAL 7035
52,5x86x58mm



B6502119
RAILTEC B, 3 modules, Vers. V
PC (UL 94 V-0)
light grey RAL 7035
52,5x86x58mm



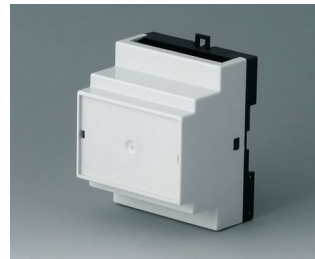
B6502121
RAILTEC B, 3 modules, Vers. VI
PC (UL 94 V-0)
light grey RAL 7035
52,5x90x58mm



B6503110
RAILTEC B, 4 modules, Vers. V
PC (UL 94 V-0)
light grey RAL 7035
70x86x58mm



B6503111
RAILTEC B, 4 modules, Vers. I
PC (UL 94 V-0)
light grey RAL 7035
70x86x58mm



B6503112
RAILTEC B, 4 modules, Vers. II
PC (UL 94 V-0)
light grey RAL 7035
70x86x58mm



B6503113
RAILTEC B, 4 modules, Vers. III
PC (UL 94 V-0)
light grey RAL 7035
70x86x58mm



B6503114
RAILTEC B, 4 modules, Vers. I
PC (UL 94 V-0)
light grey RAL 7035
70x86x58mm



B6503115
RAILTEC B, 4 modules, Vers. II
PC (UL 94 V-0)
light grey RAL 7035
70x86x58mm



B6503116
RAILTEC B, 4 modules, Vers. III
PC (UL 94 V-0)
light grey RAL 7035
70x86x58mm



B6503117
RAILTEC B, 4 modules, Vers. IV
PC (UL 94 V-0)
light grey RAL 7035
70x86x58mm

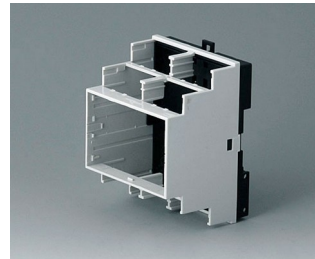
RAILTEC B



B6503118
RAILTEC B, 4 modules, Vers. IV
PC (UL 94 V-0)
light grey RAL 7035
70x86x58mm



B6503119
RAILTEC B, 4 modules, Vers. V
PC (UL 94 V-0)
light grey RAL 7035
70x86x58mm



B6503121
RAILTEC B, 4 modules, Vers. VI
PC (UL 94 V-0)
light grey RAL 7035
70x90x58mm



B6503223
RAILTEC B, 4 modules, Vers. III
low profile
PC (UL 94 V-0)
light grey RAL 7035
70x86x31,25mm



B6503229
RAILTEC B, 4 modules, Vers.
low profile
PC (UL 94 V-0)
light grey RAL 7035
70x89,6x31,25mm



B6504110
RAILTEC B, 6 modules, Vers. V
PC (UL 94 V-0)
light grey RAL 7035
105x86x59mm



B6504111
RAILTEC B, 6 modules, Vers. I
PC (UL 94 V-0)
light grey RAL 7035
105x86x59mm



B6504112
RAILTEC B, 6 modules, Vers. II
PC (UL 94 V-0)
light grey RAL 7035
105x86x59mm



B6504113
RAILTEC B, 6 modules, Vers. III
PC (UL 94 V-0)
light grey RAL 7035
105x86x59mm



B6504114
RAILTEC B, 6 modules, Vers. I
PC (UL 94 V-0)
light grey RAL 7035
105x86x59mm



B6504115
RAILTEC B, 6 modules, Vers. II
PC (UL 94 V-0)
light grey RAL 7035
105x86x59mm



B6504116
RAILTEC B, 6 modules, Vers. III
PC (UL 94 V-0)
light grey RAL 7035
105x86x59mm



B6504117
RAILTEC B, 6 modules, Vers. IV
PC (UL 94 V-0)
light grey RAL 7035
105x86x59mm



B6504118
RAILTEC B, 6 modules, Vers. IV
PC (UL 94 V-0)
light grey RAL 7035
105x86x59mm



B6504119
RAILTEC B, 6 modules, Vers. V
PC (UL 94 V-0)
light grey RAL 7035
105x86x59mm



B6504121
RAILTEC B, 6 modules, Vers. VI
PC (UL 94 V-0)
light grey RAL 7035
105x90x58mm

RAILTEC B



B6504223
RAILTEC B, 6 modules, Vers. III
low profile
PC (UL 94 V-0)
light grey RAL 7035
105x86x31,25mm



B6504229
RAILTEC B, 6 modules, Vers.
low profile
PC (UL 94 V-0)
light grey RAL 7035
105x89,6x31,25mm



B6505110
RAILTEC B, 9 modules, Vers. V
PC (UL 94 V-0)
light grey RAL 7035
157x86x59mm



B6505111
RAILTEC B, 9 modules, Vers. I
PC (UL 94 V-0)
light grey RAL 7035
157x86x59mm



B6505112
RAILTEC B, 9 modules, Vers. II
PC (UL 94 V-0)
light grey RAL 7035
157x86x59mm



B6505113
RAILTEC B, 9 modules, Vers. III
PC (UL 94 V-0)
light grey RAL 7035
157x86x59mm



B6505114
RAILTEC B, 9 modules, Vers. I
PC (UL 94 V-0)
light grey RAL 7035
157x86x59mm



B6505115
RAILTEC B, 9 modules, Vers. II
PC (UL 94 V-0)
light grey RAL 7035
157x86x59mm



B6505116
RAILTEC B, 9 modules, Vers. III
PC (UL 94 V-0)
light grey RAL 7035
157x86x59mm



B6505117
RAILTEC B, 9 modules, Vers. IV
PC (UL 94 V-0)
light grey RAL 7035
157x86x59mm



B6505118
RAILTEC B, 9 modules, Vers. IV
PC (UL 94 V-0)
light grey RAL 7035
157x86x59mm



B6505119
RAILTEC B, 9 modules, Vers. V
PC (UL 94 V-0)
light grey RAL 7035
157x86x59mm



B6505121
RAILTEC B, 9 modules, Vers. VI
PC (UL 94 V-0)
light grey RAL 7035
157x90x58mm



B6505223
RAILTEC B, 9 modules, Vers. III
low profile
PC (UL 94 V-0)
light grey RAL 7035
157x86x31,25mm



B6505229
RAILTEC B, 9 modules, Vers.
low profile
PC (UL 94 V-0)
light grey RAL 7035
157,5x89,6x31,25mm



B6506110
RAILTEC B, 12 modules, Vers. V
PC (UL 94 V-0)
light grey RAL 7035
210x90x58mm

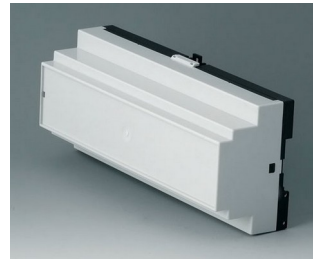
RAILTEC B



B6506111
RAILTEC B, 12 modules, Vers. I
PC (UL 94 V-0)
light grey RAL 7035
210x90x58mm



B6506112
RAILTEC B, 12 modules, Vers. II
PC (UL 94 V-0)
light grey RAL 7035
210x90x58mm



B6506113
RAILTEC B, 12 modules, Vers. III
PC (UL 94 V-0)
light grey RAL 7035
210x90x58mm



B6506114
RAILTEC B, 12 modules, Vers. I
PC (UL 94 V-0)
light grey RAL 7035
210x90x58mm



B6506115
RAILTEC B, 12 modules, Vers. II
PC (UL 94 V-0)
light grey RAL 7035
210x90x58mm



B6506116
RAILTEC B, 12 modules, Vers. III
PC (UL 94 V-0)
light grey RAL 7035
210x90x58mm



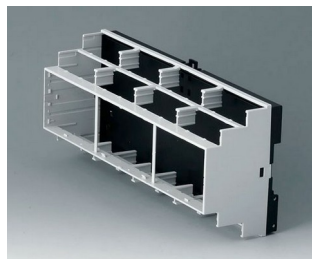
B6506117
RAILTEC B, 12 modules, Vers. IV
PC (UL 94 V-0)
light grey RAL 7035
210x90x58mm



B6506118
RAILTEC B, 12 modules, Vers. IV
PC (UL 94 V-0)
light grey RAL 7035
210x90x58mm



B6506119
RAILTEC B, 12 modules, Vers. V
PC (UL 94 V-0)
light grey RAL 7035
210x90x58mm



B6506121
RAILTEC B, 12 modules, Vers. VI
PC (UL 94 V-0)
light grey RAL 7035
210x90x58mm



B6511111
RAILTEC B, 2 modules, Vers. XI
PC (UL 94 V-0)
light grey RAL 7035
35x86x58mm



B6511112
RAILTEC B, 2 modules, Vers. XII
PC (UL 94 V-0)
light grey RAL 7035
35x86x58mm



B6511113
RAILTEC B, 2 modules, Vers. XIII
PC (UL 94 V-0)
light grey RAL 7035
35x86x58mm



B6513111
RAILTEC B, 4 modules, Vers. XI
PC (UL 94 V-0)
light grey RAL 7035
70x86x58mm



B6513112
RAILTEC B, 4 modules, Vers. XII
PC (UL 94 V-0)
light grey RAL 7035
70x86x58mm



B6513113
RAILTEC B, 4 modules, Vers. XIII
PC (UL 94 V-0)
light grey RAL 7035
70x86x58mm

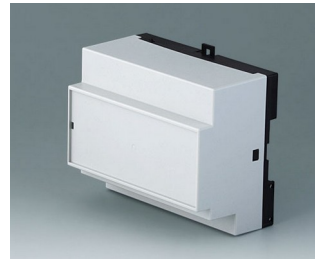
RAILTEC B



B6514111
RAILTEC B, 6 modules, Vers. XI
PC (UL 94 V-0)
light grey RAL 7035
105x86x59mm



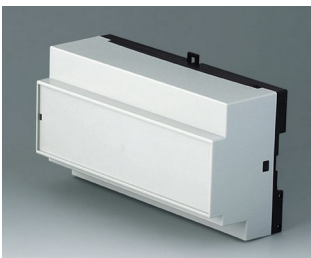
B6514112
RAILTEC B, 6 modules, Vers. XII
PC (UL 94 V-0)
light grey RAL 7035
105x86x59mm



B6514113
RAILTEC B, 6 modules, Vers. XIII
PC (UL 94 V-0)
light grey RAL 7035
105x86x59mm



B6515111
RAILTEC B, 9 modules, Vers. XI
PC (UL 94 V-0)
light grey RAL 7035
157x86x59mm



B6515112
RAILTEC B, 9 modules, Vers. XII
PC (UL 94 V-0)
light grey RAL 7035
157x86x59mm



B6515113
RAILTEC B, 9 modules, Vers. XIII
PC (UL 94 V-0)
light grey RAL 7035
157x86x59mm



B6522101
RAILTEC BP, M22, with closed side panels
PC (UL 94 V-0)
light grey RAL 7035
95x23x113mm



B6522102
RAILTEC BP, M22, closed/with ventilation slots
PC (UL 94 V-0)
light grey RAL 7035
95x23x113mm



B6522103
RAILTEC BP, M22, with ventilation slots
PC (UL 94 V-0)
light grey RAL 7035
95x23x113mm

Accessory "protection"



B6622101
Hinged cover
transparent

RAILTEC B

Accessory "wall/holder"

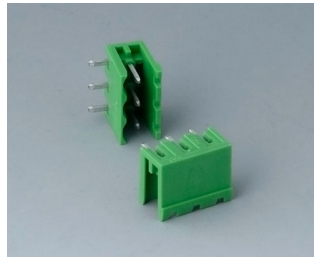


B6600334
Wall suspension elements
PPO (UL 94 V-0)
black

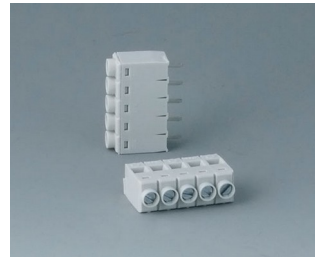
Accessory "terminals"



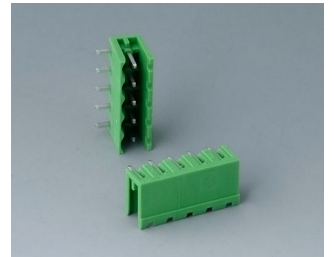
B6600111
Terminal block, block 5.0
PA 68 (UL 94 V-0)
light grey



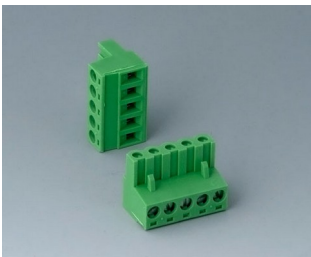
B6600222
Plug header, block 5.08
PA 68 (UL 94 V-0)



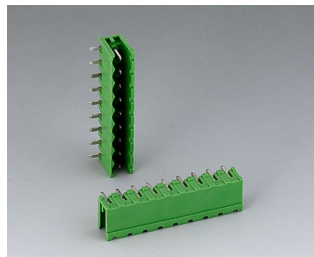
B6601111
Terminal block, block 5.0
PA 68 (UL 94 V-0)



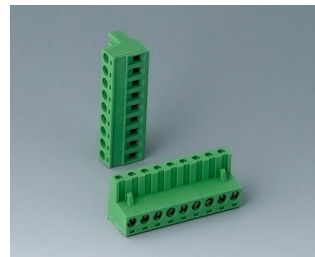
B6601222
Plug header, block 5.08
PA 6 (UL 94 V-0)



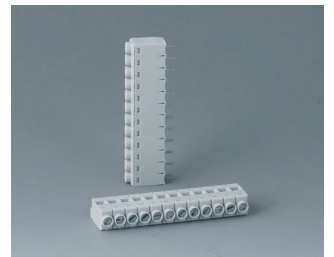
B6601223
Plug header, block 5.08
PA 6 (UL 94 V-0)



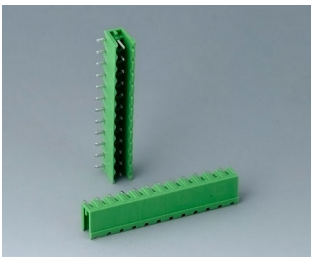
B6602222
Plug header, block 5.08
PA 6 (UL 94 V-0)



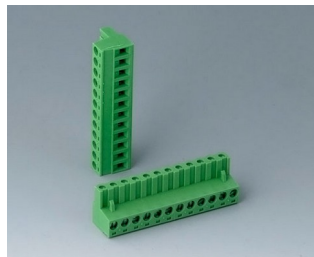
B6602223
Plug header, block 5.08
PA 6 (UL 94 V-0)



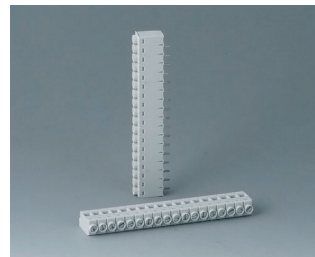
B6603111
Terminal block, block 5.0
PA 68 (UL 94 V-0)



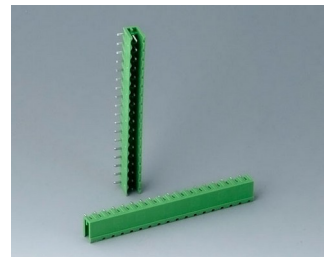
B6603222
Plug header, block 5.08
PA 6 (UL 94 V-0)



B6603223
Plug header, block 5.08
PA 6 (UL 94 V-0)

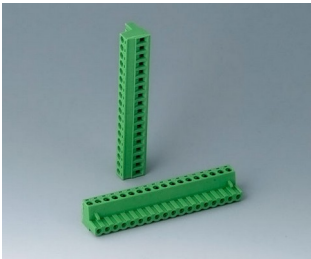


B6604111
Terminal block, block 5.0
PA 68 (UL 94 V-0)

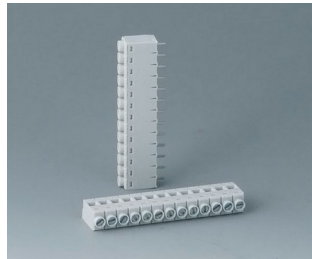


B6604222
Plug header, block 5.08
PA 68 (UL 94 V-0)

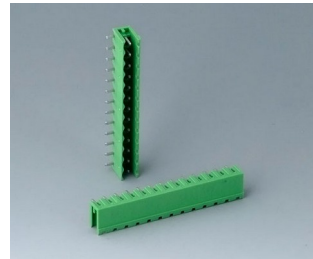
RAILTEC B



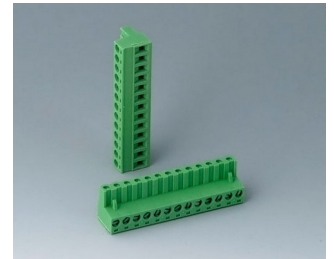
B6604223
Plug header, block 5.08
PA 68 (UL 94 V-0)



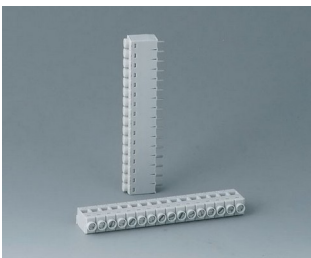
B6605111
Terminal block, block 5.0
PA 68 (UL 94 V-0)



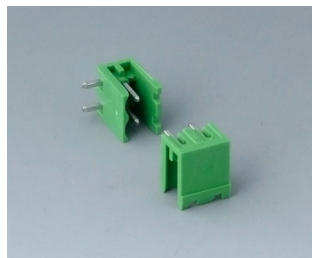
B6605222
Plug header, block 5.08
PA 6 (UL 94 V-0)



B6605223
Plug header, block 5.08
PA 6 (UL 94 V-0)



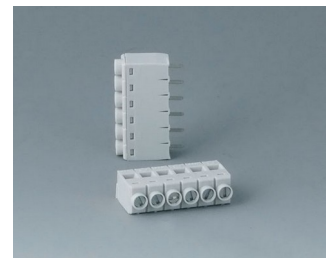
B6606111
Terminal block, block 5.0
PA 68 (UL 94 V-0)



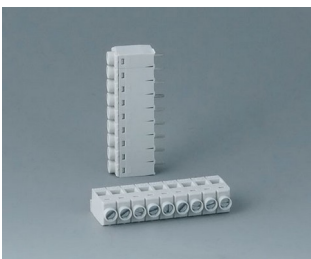
B6606222
Plug header, block 5.08
PA 6 (UL 94 V-0)



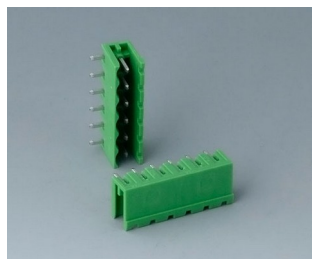
B6606223
Plug header, block 5.08
PA 6 (UL 94 V-0)



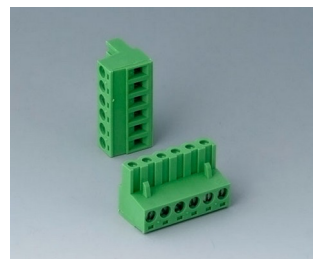
B6607111
Terminal block, block 5.0
PA 68 (UL 94 V-0)



B6608111
Terminal block, block 5.0
PA 68 (UL 94 V-0)



B6608222
Plug header, block 5.08
PA 68 (UL 94 V-0)



B6608223
Plug header, block 5.08
PA 68 (UL 94 V-0)

Accessory "terminal guards"



B6607140
Terminal guards, flat
PC (UL 94 V-0)
light grey



B6607141
Terminal guards, flat
PC (UL 94 V-0)
light grey

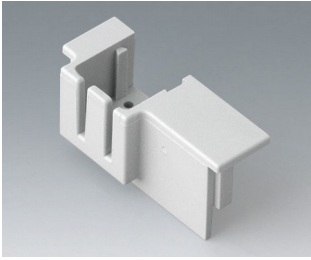


B6607142
Terminal guards, flat
PC (UL 94 V-0)
light grey



B6607143
Terminal guards, flat
PC (UL 94 V-0)
light grey

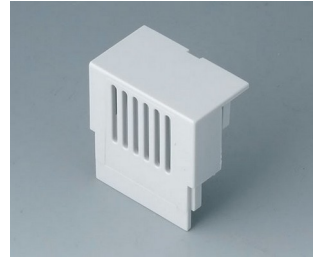
RAILTEC B



B6607145
 KNX Cover, flat
 PC (UL 94 V-0)
 light grey



B6607160
 Terminal guards, high
 PC (UL 94 V-0)
 light grey



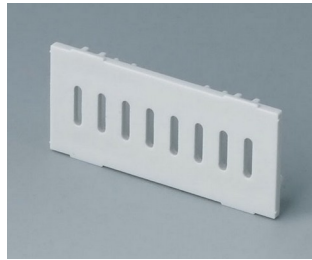
B6607161
 Terminal guards, high
 PC (UL 94 V-0)
 light grey



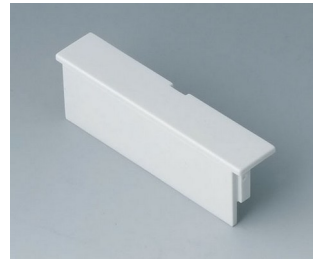
B6607162
 Terminal guards, high
 PC (UL 94 V-0)
 light grey



B6607163
 Terminal guards, high
 PC (UL 94 V-0)
 light grey



B6607191
 Partition plate
 PC (UL 94 V-0)
 light grey



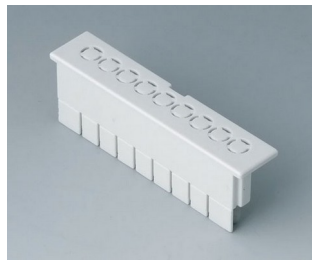
B6608140
 Terminal guards, flat
 PC (UL 94 V-0)
 light grey



B6608141
 Terminal guards, flat
 PC (UL 94 V-0)
 light grey



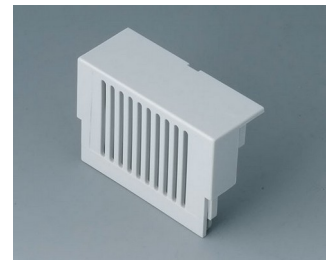
B6608142
 Terminal guards, flat
 PC (UL 94 V-0)
 light grey



B6608143
 Terminal guards, flat
 PC (UL 94 V-0)
 light grey



B6608160
 Terminal guards, high
 PC (UL 94 V-0)
 light grey



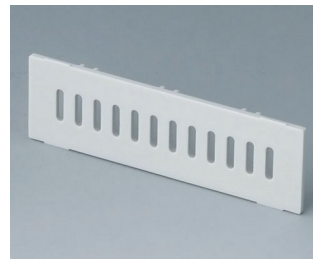
B6608161
 Terminal guards, high
 PC (UL 94 V-0)
 light grey



B6608162
 Terminal guards, high
 PC (UL 94 V-0)
 light grey



B6608163
 Terminal guards, high
 PC (UL 94 V-0)
 light grey



B6608191
 Partition plate
 PC (UL 94 V-0)
 light grey

RAILTEC B

Accessory "screws"



A0305031
Self-tapping screws 2.5 x 6 mm
(PZ1)

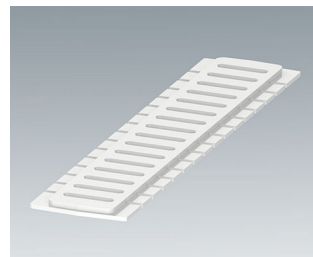
Accessory



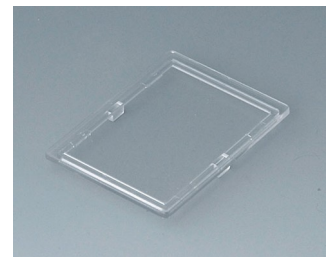
B6522801
Front panel
PC (UL 94 V-0)
light grey RAL 7035



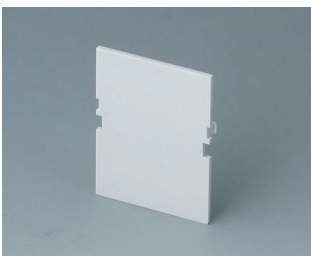
B6522811
Side panel closed
PC (UL 94 V-0)
light grey RAL 7035



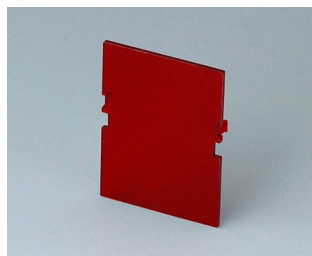
B6522821
Side panel with ventilation slots
PC (UL 94 V-0)
light grey RAL 7035



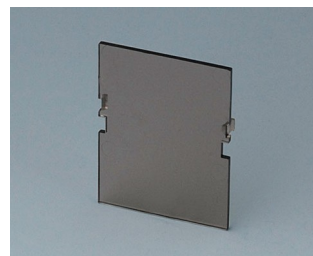
B6601100
Lid, 2 modules
PC (UL 94 V-0)
transparent



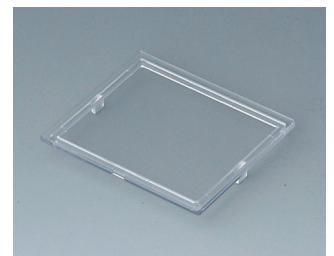
B6601180
Front panel, 2 modules, Vers. VI
PC (UL 94 V-0)
light grey
32x42mm



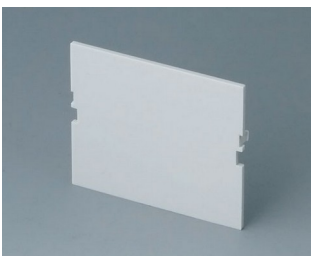
B6601480
Front panel, 2 modules, Vers. VI
PC (UL 94 V-0)
red transparent
32x42mm



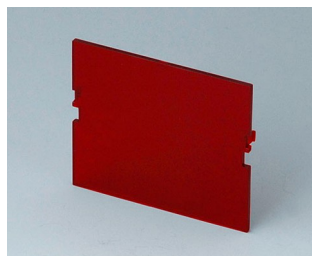
B6601580
Front panel, 2 modules, Vers. VI
PC (UL 94 V-0)
smoked glass
32x42mm



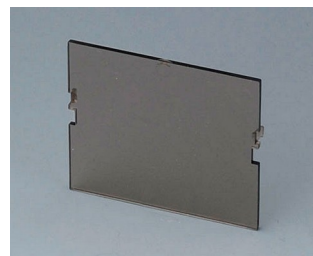
B6602100
Lid, 3 modules
PC (UL 94 V-0)
transparent



B6602180
Front panel, 3 modules, Vers. VI
PC (UL 94 V-0)
light grey
49x42mm



B6602480
Front panel, 3 modules, Vers. VI
PC (UL 94 V-0)
red transparent
49x42mm

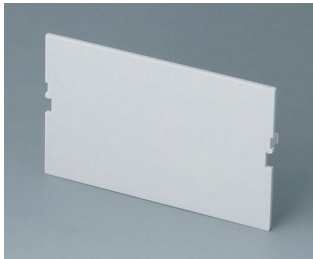


B6602580
Front panel, 3 modules, Vers. VI
PC (UL 94 V-0)
smoked glass
42x49mm

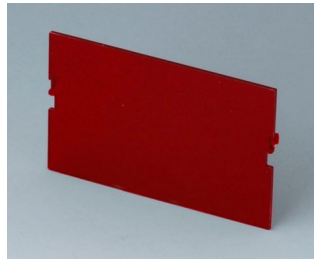


B6603100
Lid, 4 modules
PC (UL 94 V-0)
transparent

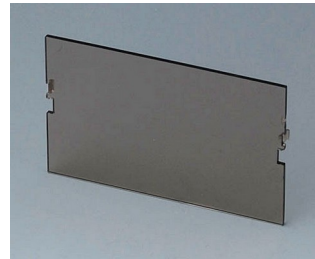
RAILTEC B



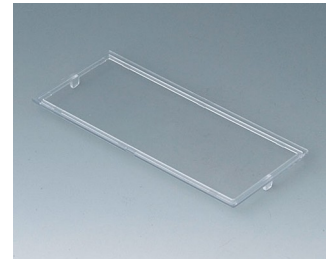
B6603180
Front panel, 4 modules, Vers. VI
PC (UL 94 V-0)
light grey
67x42mm



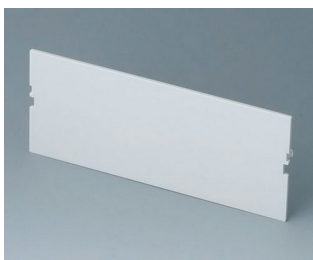
B6603480
Front panel, 4 modules, Vers. VI
PC (UL 94 V-0)
red transparent
67x42mm



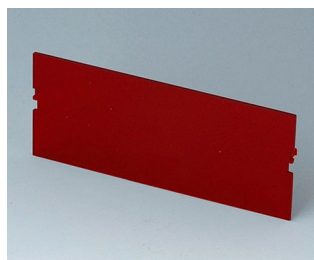
B6603580
Front panel, 4 modules, Vers. VI
PC (UL 94 V-0)
smoked glass
67x42mm



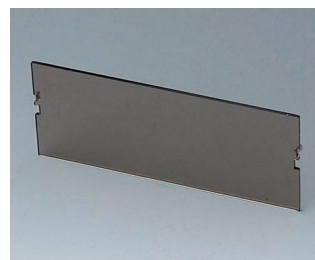
B6604100
Lid, 6 modules
PC (UL 94 V-0)
transparent



B6604180
Front panel, 6 modules, Vers. VI
PC (UL 94 V-0)
light grey
102x42mm



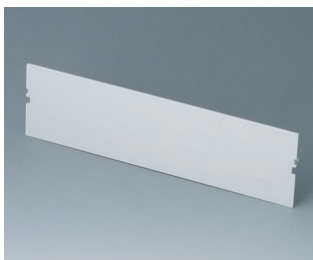
B6604480
Front panel, 6 modules, Vers. VI
PC (UL 94 V-0)
red transparent
102x42mm



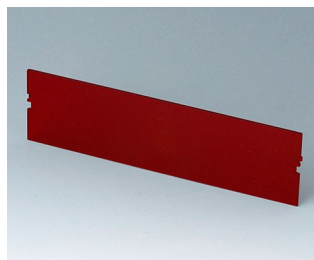
B6604580
Front panel, 6 modules, Vers. VI
PC (UL 94 V-0)
smoked glass
102x42mm



B6605100
Lid, 9 modules
PC (UL 94 V-0)
transparent



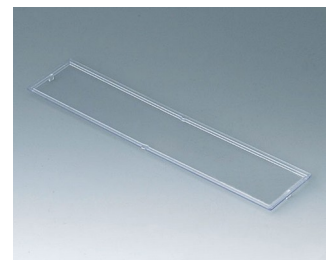
B6605180
Front panel, 9 modules, Vers. VI
PC (UL 94 V-0)
light grey
155x42mm



B6605480
Front panel, 9 modules, Vers. VI
PC (UL 94 V-0)
red transparent
155x42mm



B6605580
Front panel, 9 modules, Vers. VI
PC (UL 94 V-0)
smoked glass
155x42mm



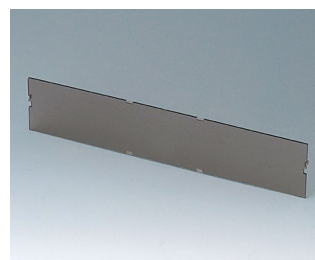
B6606100
Lid, 12 modules
PC (UL 94 V-0)
transparent



B6606180
Front panel, 12 modules, Vers. VI
PC (UL 94 V-0)
light grey
206x42mm



B6606480
Front panel, 12 modules, Vers. VI
PC (UL 94 V-0)
red transparent
206x42mm



B6606580
Front panel, 12 modules, Vers. VI
PC (UL 94 V-0)
smoked glass
206x42mm

Subject to technical modification without notice. © by OKW Gehäusesysteme, Buchen/Germany.