

EUROPA CASE

Velkoformátové stolní skříně

EUROPA CASE nabízí maximální snadnou instalaci: Bez jediného šroubu kryty, římsy a boční panely pevně sepnou pod tlakem.

- Univerzální pro stolní a mobilní
- Velkorysé oblasti provozu a rozhraní
- 2 standardní šířky 42 TE & 63 TE
- 4 standardní výšky 1 U, 2 U, 3 U, 6 U; volitelně použitelné a kombinovatelné boční díly ve 3 výškových jednotkách (0,5 U, 1 U a 2 U) umožňují ještě více variant bydlení v závislosti na požadovaném prostoru
- Vstříkované vyztužující žebra vytvářejí příjemně lehké pouzdro zvláště stabilní a bez torze
- Ergonomicky příznivý sklon pomocí sklopných nohou nebo robustní rukojeti, vhodný také jako držadlo
- Ložnice s ventilačními otvory řeší problémy s větráním
- Minimální úsilí při instalaci díky speciální uzamknutí zámku OKW
- Hliníkové přední / zadní desky lze snadno vložit
- Výběrem pouzdrových pásů nebo bočních částí, např. ve vaší barvě domu jsou vytvořeny produkty přizpůsobené vašemu firemní image
- Stupeň ochrany < IP 40
- Upevňovací deska pro desky a komponenty
- Gumové nožičky jsou součástí balení



EUROPA CASE

Aplikace a příklady

- Počítačové periferie, modemy a rozhraní
- Síťové technologie
- Ovládání
- Získávání dat z elektronických zdravotnických prostředků
- Měření a řízení



Light therapy device

Přizpůsobení možností

Co ještě potřebujete pro svůj vlastní velmi osobní produkt? Můžeme dodat zapouzdření a ladící knoflíky se všemi nezbytnými úpravami pro montáž vašich elektronických součástek.
Možnosti přizpůsobení pro Europa Case



Mechanické
opracování



Lakování



Tisk



Laserové značení



Zakázkový materiál



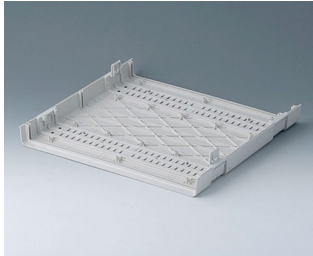
Stínění EMC



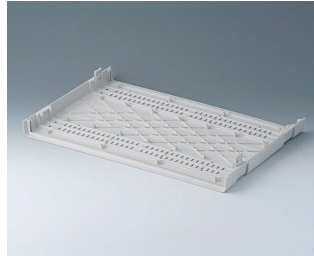
Kompletace / Montáž

EUROPA CASE

Vyberte verze



A0114170
Shell 42 TE
ABS (UL 94 HB)
off-white RAL 9002
260x250x27mm



A0116170
Shell 63 TE
ABS (UL 94 HB)
off-white RAL 9002
367x250x27mm



A0214070
EURO CASE 42 TE, without
handle
ABS (UL 94 HB)
off-white RAL 9002
260x250x54mm



A0214170
EURO CASE 42 TE, without
handle
ABS (UL 94 HB)
off-white RAL 9002
260x250x54mm



A0214270
EURO CASE 42 TE, without
handle
ABS (UL 94 HB)
off-white RAL 9002
260x250x54mm



A0216070
EURO CASE 63 TE, without
handle
ABS (UL 94 HB)
off-white RAL 9002
367x250x54mm



A0216170
EURO CASE 63 TE, without
handle
ABS (UL 94 HB)
off-white RAL 9002
367x250x54mm



A0216270
EURO CASE 63 TE, without
handle
ABS (UL 94 HB)
off-white RAL 9002
367x250x54mm



A0224070
EURO CASE 42 TE, without
handle
ABS (UL 94 HB)
off-white RAL 9002
260x250x98,5mm



A0224170
EURO CASE 42 TE, without
handle
ABS (UL 94 HB)
off-white RAL 9002
260x250x98,5mm



A0224270
EURO CASE 42 TE, without
handle
ABS (UL 94 HB)
off-white RAL 9002
260x250x98,5mm



A0224470
EURO CASE 42 TE, with handle
ABS (UL 94 HB)
off-white RAL 9002
260x250x98,5mm

EUROPA CASE



A0224570
EURO CASE 42 TE, with handle
ABS (UL 94 HB)
off-white RAL 9002
260x250x98,5mm



A0224670
EURO CASE 42 TE, with handle
ABS (UL 94 HB)
off-white RAL 9002
260x250x98,5mm



A0226070
EURO CASE 63 TE, without
handle
ABS (UL 94 HB)
off-white RAL 9002
367x250x98,5mm



A0226170
EURO CASE 63 TE, without
handle
ABS (UL 94 HB)
off-white RAL 9002
367x250x98,5mm



A0226270
EURO CASE 63 TE, without
handle
ABS (UL 94 HB)
off-white RAL 9002
367x250x98,5mm



A0226470
EURO CASE 63 TE, with handle
ABS (UL 94 HB)
off-white RAL 9002
367x250x98,5mm



A0226570
EURO CASE 63 TE, with handle
ABS (UL 94 HB)
off-white RAL 9002
367x250x98,5mm



A0226670
EURO CASE 63 TE, with handle
ABS (UL 94 HB)
off-white RAL 9002
367x250x98,5mm



A0234070
EURO CASE 42 TE, without
handle
ABS (UL 94 HB)
off-white RAL 9002
260x250x143mm



A0234170
EURO CASE 42 TE, without
handle
ABS (UL 94 HB)
off-white RAL 9002
260x250x143mm



A0234270
EURO CASE 42 TE, without
handle
ABS (UL 94 HB)
off-white RAL 9002
260x250x143mm



A0234470
EURO CASE 42 TE, with handle
ABS (UL 94 HB)
off-white RAL 9002
260x250x143mm



A0234570
EURO CASE 42 TE, with handle
ABS (UL 94 HB)
off-white RAL 9002
260x250x143mm



A0234670
EURO CASE 42 TE, with handle
ABS (UL 94 HB)
off-white RAL 9002
260x250x143mm



A0236070
EURO CASE 63 TE, without
handle
ABS (UL 94 HB)
off-white RAL 9002
367x250x143mm



A0236170
EURO CASE 63 TE, without
handle
ABS (UL 94 HB)
off-white RAL 9002
367x250x143mm

EUROPA CASE



A0236270
EURO CASE 63 TE, without handle
ABS (UL 94 HB)
off-white RAL 9002
367x250x143mm



A0236470
EURO CASE 63 TE, with handle
ABS (UL 94 HB)
off-white RAL 9002
367x250x143mm



A0236570
EURO CASE 63 TE, with handle
ABS (UL 94 HB)
off-white RAL 9002
367x250x143mm



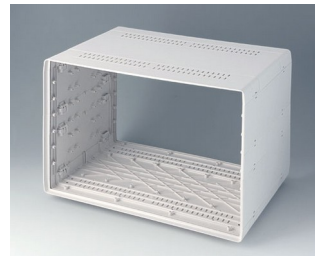
A0236670
EURO CASE 63 TE, with handle
ABS (UL 94 HB)
off-white RAL 9002
367x250x143mm



A0266070
EURO CASE 63 TE, without handle
ABS (UL 94 HB)
off-white RAL 9002
367x250x276,5mm

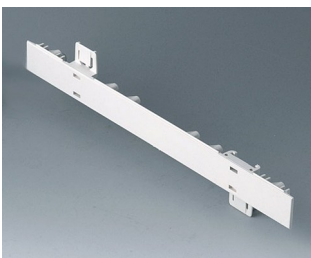


A0266170
EURO CASE 63 TE, without handle
ABS (UL 94 HB)
off-white RAL 9002
367x250x276,5mm

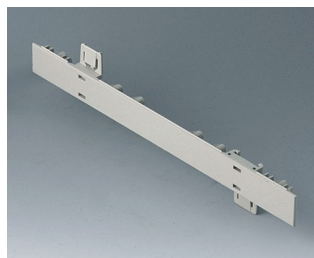


A0266270
EURO CASE 63 TE, without handle
ABS (UL 94 HB)
off-white RAL 9002
367x250x276,5mm

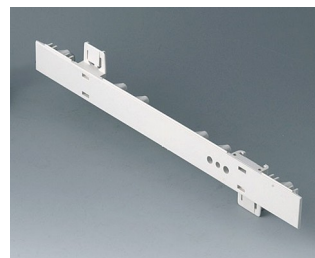
System components to complete



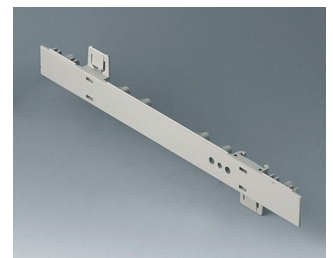
A0105270
Side panel 0.5 HE
ABS (UL 94 HB)
off-white RAL 9002
250x22,25mm



A0105280
Side panel 0.5 HE
ABS (UL 94 HB)
pebble grey RAL 7032
250x22,25mm

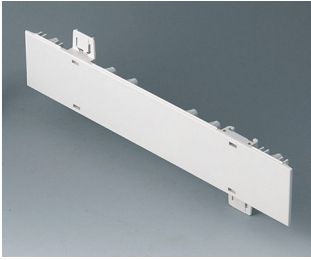


A0106270
Side panel 0.5 HE, for handle mounting
ABS (UL 94 HB)
off-white RAL 9002
250x22,25mm

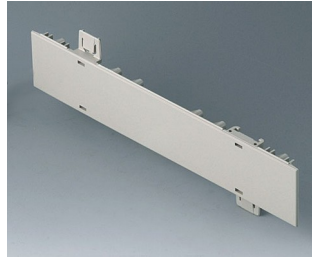


A0106280
Side panel 0.5 HE, for handle mounting
ABS (UL 94 HB)
pebble grey RAL 7032
250x22,25mm

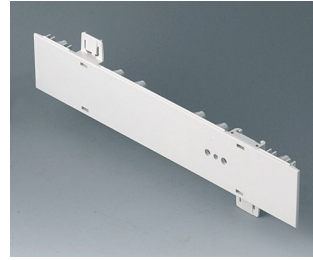
EUROPA CASE



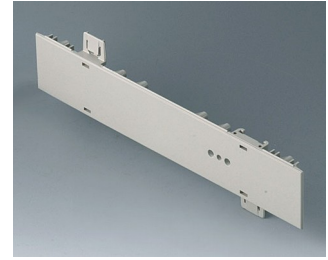
A0110270
Side panel 1 HE
ABS (UL 94 HB)
off-white RAL 9002
250x44,45mm



A0110280
Side panel 1 HE
ABS (UL 94 HB)
pebble grey RAL 7032
250x44,45mm



A0111270
Side panel 1 HE, for handle
mounting
ABS (UL 94 HB)
off-white RAL 9002
250x44,45mm



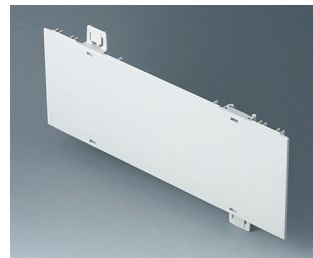
A0111280
Side panel 1 HE, for handle
mounting
ABS (UL 94 HB)
pebble grey RAL 7032
250x44,45mm



A0114370
Snap-in panel, without slots
ABS (UL 94 HB)
off-white RAL 9002



A0116370
Snap-in panel, without slots
ABS (UL 94 HB)
off-white RAL 9002



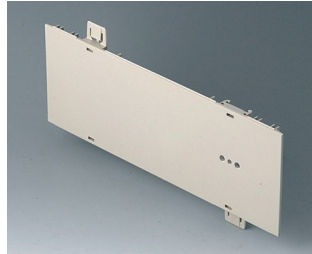
A0120270
Side panel 2 HE
ABS (UL 94 HB)
off-white RAL 9002
250x88,9mm



A0120280
Side panel 2 HE
ABS (UL 94 HB)
pebble grey RAL 7032
250x88,9mm



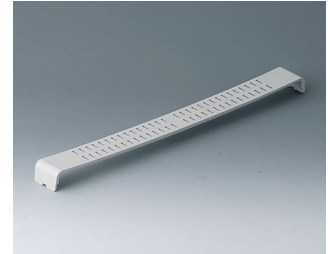
A0121270
Side panel 2 HE, for handle
mounting
ABS (UL 94 HB)
off-white RAL 9002
250x88,9mm



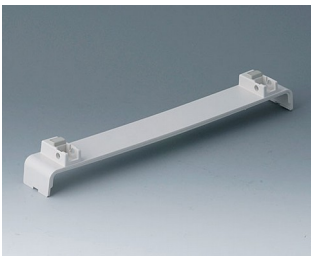
A0121280
Side panel 2 HE, for handle
mounting
ABS (UL 94 HB)
pebble grey RAL 7032
250x88,9mm



A0124370
Snap-in panel, with slots
ABS (UL 94 HB)
off-white RAL 9002



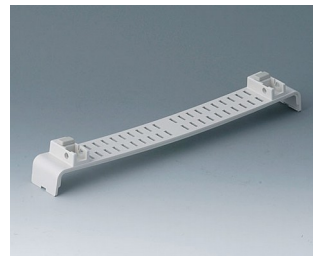
A0126370
Snap-in panel, with slots
ABS (UL 94 HB)
off-white RAL 9002



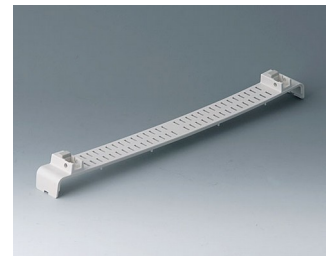
A0134370
Snap-in panel, without slots, with
feet
ABS (UL 94 HB)
off-white RAL 9002



A0136370
Snap-in panel, without slots, with
feet
ABS (UL 94 HB)
off-white RAL 9002



A0144370
Snap-in panel with, slots, with
feet
ABS (UL 94 HB)
off-white RAL 9002



A0146370
Snap-in panel, with slots, with
feet
ABS (UL 94 HB)
off-white RAL 9002

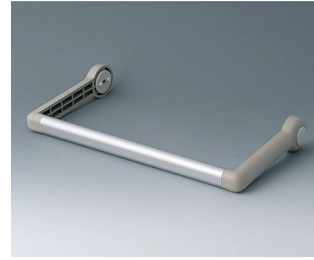
EUROPA CASE



A0344216
Handle 42 TE
PA 6
off-white RAL 9002



A0344217
Handle 42 TE
PA 6
off-white RAL 9002



A0344218
Handle 42 TE
PA 6
pebble grey RAL 7032



A0346316
Handle 63 TE
PA 6
off-white RAL 9002



A0346317
Handle 63 TE
PA 6
off-white RAL 9002



A0346318
Handle 63 TE
PA 6
pebble grey RAL 7032

Accessory to complete



A0314270
Front / rear panel 42 TE 1 HE
Aluminium
matt anodised
250,8x46,3x2mm



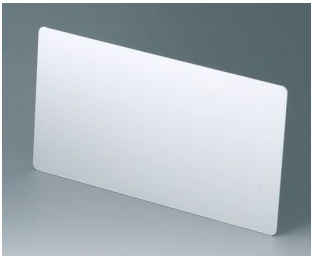
A0316370
Front / rear panel 63 TE 1 HE
Aluminium
matt anodised
357,8x46,3x2mm



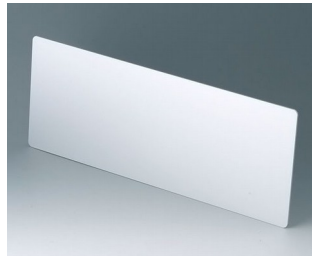
A0324270
Front / rear panel 42 TE 2 HE
Aluminium
matt anodised
250,8x90,7x2mm



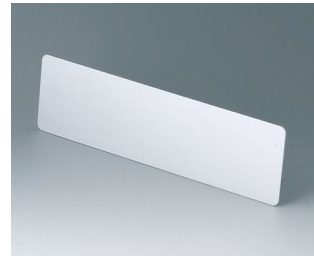
A0326370
Front / rear panel 63 TE 2 HE
Aluminium
matt anodised
357,8x90,7x2mm



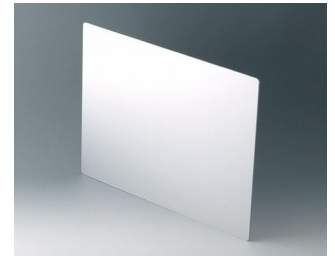
A0334270
Front / rear panel 42 TE 3 HE
Aluminium
matt anodised
250,8x135,2x2mm



A0336370
Front / rear panel 63 TE 3 HE
Aluminium
matt anodised
357,8x135,2x2mm



A0354270
Front / rear panel 42 TE 1.5 HE
Aluminium
matt anodised
250,8x68,5x2mm



A0366370
Front / rear panel 63 TE 6 HE
Aluminium
matt anodised
268,6x357,8x2mm

EUROPA CASE

Accessory "screws"



A0306031
Self-tapping screws 3 x 6 mm
(PZ1)



A0308031
Self-tapping screws 3 x 8 mm
(PZ1)



A0308132
Self-tapping screw 3 x 8 mm
(T10)
Stainless steel

Accessory



A0350007
Tilt foot
ABS (UL 94 HB)
off-white RAL 9002

Subject to technical modification without notice. © by OKW Gehäusesysteme, Buchen/Germany.