

# ERGO-CASE

## Body contoured electronic enclosures

The unique convex design of these plastic enclosures makes it possible for the user to wear the unit comfortably – whether on their arm, chest or waist.

- unique design for comfortable wearing, holding and operating
- integrated carrying accessories include: wrist strap, belt strap, strap eyelet, belt/pocket clip etc.
- four sizes in two colours
- with/without battery compartment:  
battery compartments in sizes M and L for 4 x AA, 1 x 9 V, 2 x 9 V cells with snap-in battery lid, if required, this can be secured by a screw;  
size S with integrated supports for 2 x AAA cells
- size XS with soft-touch TPE ring with optional eyelets for accessory straps or lanyard
- with flat or high top part for individual installation configurations
- size L also with clip-in display panel in translucent PC or solid ABS
- flat end panel for mounting connectors, switches, LCDs etc.
- top recess for mounting membrane keypads
- wall mounting with removal prevention; easy transmission of data and charging current; contacts as accessories (S, M, L)
- internal screw pillars for mounting PCBs
- protectors absorb impacts and protect surfaces (acc. size M high)



# ERGO-CASE

## Applications and Examples

- Mobile data recording and transmission
- Medical and laboratory
- Measuring technology
- IoT/IIoT
- Storage and sales logistics
- Digital open and closed-loop control technology
- Health and wellness equipment



Datalogger for neuromonitoring



Dynamic pressure measuring between foot and shoe



Fully automatic safety device for the ascent



Ground microphone



Mobile system for treating inner ear ailments



Multiport with integrated datalogger



Patient display for recumbent ergometers



Therapy unit



Wearable voice amplifier

## Customising Options

What do you still need for your own very personal product? We can supply enclosures and tuning knobs with all necessary modifications for fitting your electronic components.  
Customising options for Ergo-Case

# ERGO-CASE



Machining



Lacquering



Printing



Laser marking



Decor foils



Special material



EMC shielding



Installation / Assembly  
of accessories

## Select Versions



**B7000107**  
ERGO-CASE S, flat  
ABS (UL 94 HB)  
off-white RAL 9002  
80x96x32mm  
IP 54 opt.



**B7000109**  
ERGO-CASE S, flat  
ABS (UL 94 HB)  
black RAL 9005  
80x96x32mm  
IP 54 opt.



**B7005107**  
ERGO-CASE S, high  
ABS (UL 94 HB)  
off-white RAL 9002  
80x96x44mm  
IP 54 opt.



**B7005109**  
ERGO-CASE S, high  
ABS (UL 94 HB)  
black RAL 9005  
80x96x44mm  
IP 54 opt.



**B7010107**  
ERGO-CASE M, flat  
ABS (UL 94 HB)  
off-white RAL 9002  
150x100x40mm  
IP 54 opt.



**B7010109**  
ERGO-CASE M, flat  
ABS (UL 94 HB)  
black RAL 9005  
150x100x40mm  
IP 54 opt.



**B7010207**  
ERGO-CASE M, flat  
ABS (UL 94 HB)  
off-white RAL 9002  
150x100x40mm  
IP 54 opt.



**B7010209**  
ERGO-CASE M, flat  
ABS (UL 94 HB)  
black RAL 9005  
150x100x40mm  
IP 54 opt.

# ERGO-CASE



**B7015107**  
ERGO-CASE M, high  
ABS (UL 94 HB)  
off-white RAL 9002  
150x100x55mm  
IP 54 opt.



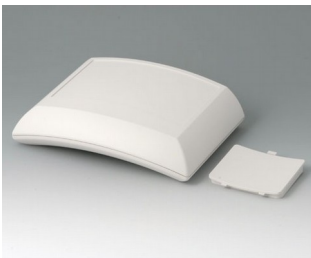
**B7015109**  
ERGO-CASE M, high  
ABS (UL 94 HB)  
black RAL 9005  
150x100x55mm  
IP 54 opt.



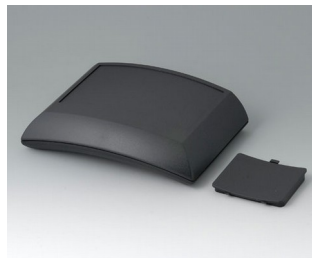
**B7015207**  
ERGO-CASE M, high  
ABS (UL 94 HB)  
off-white RAL 9002  
150x100x55mm  
IP 54 opt.



**B7015209**  
ERGO-CASE M, high  
ABS (UL 94 HB)  
black RAL 9005  
150x100x55mm  
IP 54 opt.



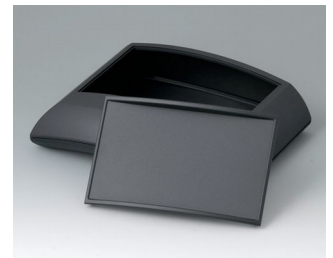
**B7020107**  
ERGO-CASE L, flat  
ABS (UL 94 HB)  
off-white RAL 9002  
150x200x54mm  
IP 54 opt.



**B7020109**  
ERGO-CASE L, flat  
ABS (UL 94 HB)  
black RAL 9005  
150x200x54mm  
IP 54 opt.



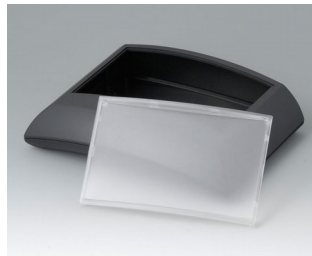
**B7020137**  
ERGO-CASE L, flat  
ABS (UL 94 HB)  
off-white RAL 9002  
150x200x54mm  
IP 40



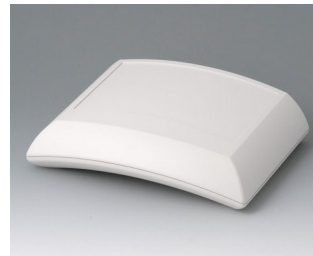
**B7020139**  
ERGO-CASE L, flat  
ABS (UL 94 HB)  
black RAL 9005  
150x200x54mm  
IP 40



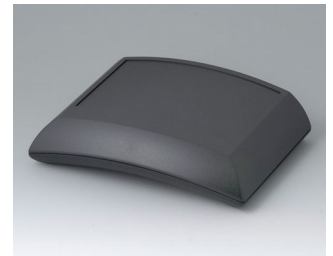
**B7020147**  
ERGO-CASE L, flat  
ABS (UL 94 HB)  
off-white RAL 9002  
150x200x54mm  
IP 40



**B7020149**  
ERGO-CASE L, flat  
ABS (UL 94 HB)  
black RAL 9005  
150x200x54mm  
IP 40



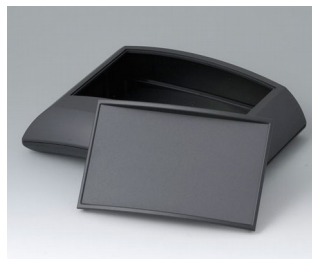
**B7020207**  
ERGO-CASE L, flat  
ABS (UL 94 HB)  
off-white RAL 9002  
150x200x54mm  
IP 54 opt.



**B7020209**  
ERGO-CASE L, flat  
ABS (UL 94 HB)  
black RAL 9005  
150x200x54mm  
IP 54 opt.



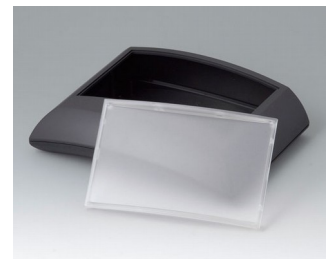
**B7020237**  
ERGO-CASE L, flat  
ABS (UL 94 HB)  
off-white RAL 9002  
150x200x54mm  
IP 40



**B7020239**  
ERGO-CASE L, flat  
ABS (UL 94 HB)  
black RAL 9005  
150x200x54mm  
IP 40



**B7020247**  
ERGO-CASE L, flat  
ABS (UL 94 HB)  
off-white RAL 9002  
150x200x54mm  
IP 40

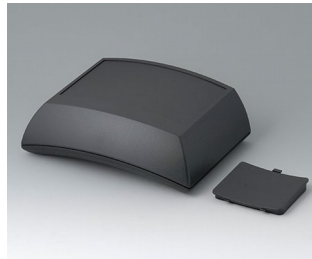


**B7020249**  
ERGO-CASE L, flat  
ABS (UL 94 HB)  
black RAL 9005  
150x200x54mm  
IP 40

# ERGO-CASE



**B7025107**  
ERGO-CASE L, high  
ABS (UL 94 HB)  
off-white RAL 9002  
150x200x69mm  
IP 54 opt.



**B7025109**  
ERGO-CASE L, high  
ABS (UL 94 HB)  
black RAL 9005  
150x200x69mm  
IP 54 opt.



**B7025137**  
ERGO-CASE L, high  
ABS (UL 94 HB)  
off-white RAL 9002  
150x200x69mm  
IP 40



**B7025139**  
ERGO-CASE L, high  
ABS (UL 94 HB)  
black RAL 9005  
150x200x69mm  
IP 40



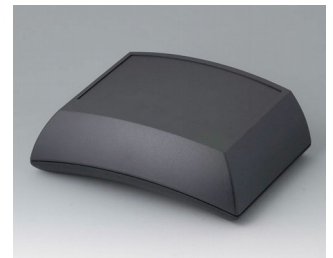
**B7025147**  
ERGO-CASE L, high  
ABS (UL 94 HB)  
off-white RAL 9002  
150x200x69mm  
IP 40



**B7025149**  
ERGO-CASE L, high  
ABS (UL 94 HB)  
black RAL 9005  
150x200x69mm  
IP 40



**B7025207**  
ERGO-CASE L, high  
ABS (UL 94 HB)  
off-white RAL 9002  
150x200x69mm  
IP 54 opt.



**B7025209**  
ERGO-CASE L, high  
ABS (UL 94 HB)  
black RAL 9005  
150x200x69mm  
IP 54 opt.



**B7025237**  
ERGO-CASE L, high  
ABS (UL 94 HB)  
off-white RAL 9002  
150x200x69mm  
IP 40



**B7025239**  
ERGO-CASE L, high  
ABS (UL 94 HB)  
black RAL 9005  
150x200x69mm  
IP 40



**B7025247**  
ERGO-CASE L, high  
ABS (UL 94 HB)  
off-white RAL 9002  
150x200x69mm  
IP 40



**B7025249**  
ERGO-CASE L, high  
ABS (UL 94 HB)  
black RAL 9005  
150x200x69mm  
IP 40



**B7040217**  
ERGO-CASE XS  
ABS (UL 94 HB)  
off-white RAL 9002  
82x56x24mm  
IP 42



**B7040219**  
ERGO-CASE XS  
ABS (UL 94 HB)  
black RAL 9005  
82x56x24mm  
IP 42



**B7040227**  
ERGO-CASE XS  
ABS (UL 94 HB)  
off-white RAL 9002  
82x56x24mm  
IP 42



**B7040229**  
ERGO-CASE XS  
ABS (UL 94 HB)  
black RAL 9005  
82x56x24mm  
IP 42

# ERGO-CASE

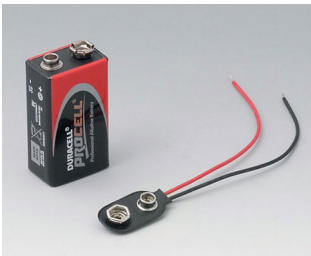


**B7040237**  
 ERGO-CASE XS  
 ABS (UL 94 HB)  
 off-white RAL 9002  
 82x56x24mm  
 IP 42



**B7040239**  
 ERGO-CASE XS  
 ABS (UL 94 HB)  
 black RAL 9005  
 82x56x24mm  
 IP 42

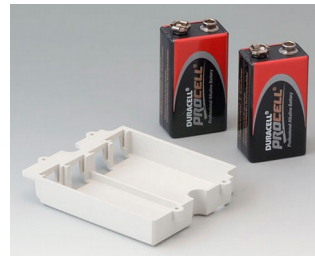
## Accessory "battery"



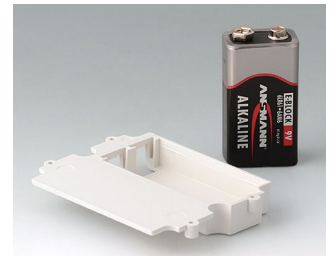
**A9160003**  
 Plug-in contact, 1 x 9 V (PP3)



**A9161002**  
 Set of battery clips, 2 x 9 V or 4 x AA  
 Steel  
 tin-plated



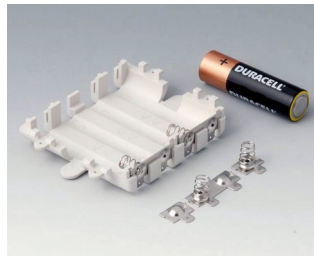
**A9174002**  
 Battery compartment, 2 x 9 V  
 ABS (UL 94 HB)  
 off-white RAL 9002



**A9174003**  
 Battery compartment, 1 x 9 V  
 ABS (UL 94 HB)  
 off-white RAL 9002



**A9174006**  
 Set of battery clips, 1 x 9 V  
 Steel  
 tin-plated



**A9345217**  
 Set of battery compartment, 4 x AA  
 ABS (UL 94 HB)  
 off-white RAL 9002

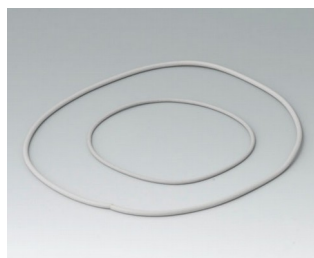


**B7100002**  
 Set of battery clips, 2 x AAA

## Accessory "protection"



**B7100005**  
 Sealing S



**B7110001**  
 Sealing kit M

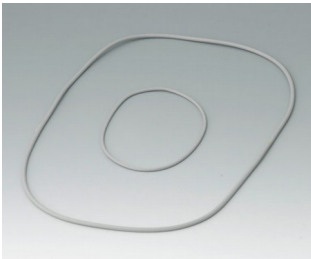


**B7110005**  
 Sealing M

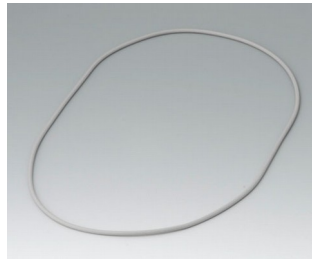


**B7115108**  
 Protector M, high  
 TPE  
 volcano

# ERGO-CASE

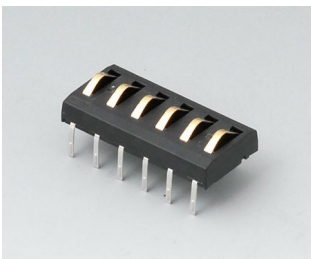


**B7120001**  
Sealing kit L



**B7120005**  
Sealing L

## Accessory "wall/holder"



**A9178007**  
Contacts, male  
gold-plated



**B7110028**  
Fastening elements L / M / S  
PA 6  
volcano



**B7110048**  
Wall suspension elements S / M  
PA 6  
volcano



**B7120048**  
Wall suspension elements L  
PA 6  
volcano

## Accessory "carrying"



**A9100001**  
Ring eyelet  
PA 6  
volcano



**B7110028**  
Fastening elements L / M / S  
PA 6  
volcano



**B7110107**  
Belt / pocket clip  
PA 6  
off-white RAL 9002



**B7110109**  
Belt / pocket clip  
PA 6  
black RAL 9005



**B7110129**  
Belt strap  
black  
450x35mm



**B7110139**  
Belt strap  
black  
1200x30mm



**B7110149**  
Belt strap  
black  
1500x30mm



**B9100033**  
Wrist strap  
black  
280mm

# ERGO-CASE



**B9100063**  
Carrying strap, textile lanyard  
black  
860mm



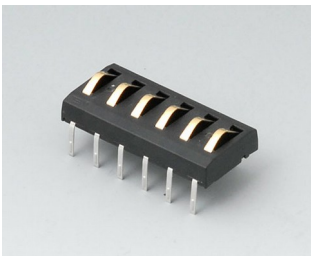
**B9100073**  
Carrying strap, textile lanyard  
black  
914x16mm

## Accessory "screws"

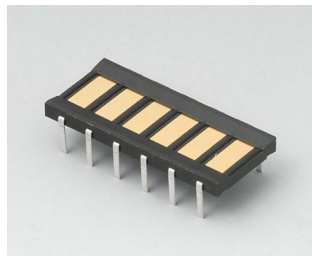


**A0305031**  
Self-tapping screws 2.5 x 6 mm  
(PZ1)

## Accessory



**A9178007**  
Contacts, male  
gold-plated



**A9178008**  
Contacts, female  
gold-plated

Subject to technical modification without notice. © by OKW Gehäusesysteme, Buchen/Germany.