

# SOFT-CASE

## Wide-format handheld enclosures

SOFT-CASE plastic enclosures convince design engineers, because they correspond with today's design and technology needs.

- handy design with soft contours for a pleasant touch sensation
- unique "wide-format" offers a generous interface area as well as sufficient room for larger displays, while also ensuring user comfort
- raised connector mounting panel on the wide edge to accommodate more connections
- universal use for handheld, desktop and wall mount applications
- four sizes
- optional intermediate rings provide more installation height. Different versions: ABS rings in case colour or chromated, soft TPE ring
- with soft TPE ring protection class IP 54 possible (enclosure versions without battery compartment in ABS or PMMA)
- two materials: ABS (UL 94 HB) or PMMA infra-red light-permeable (UL 94 HB)
- without/with battery compartment for 2 x AAA, 2 x AA, 4 x AA or 1 x 9 V;
- clip-on battery compartment lid can be screw fixed
- recessed operating area for protecting the membrane keypad or decorative foil/label
- combi-clip serves as a belt clip and/or wall suspension element (accessory)
- tilt foot bar for ergonomic canting on a desk
- internal fastening pillars for PCBs



# SOFT-CASE

## Applications and Examples

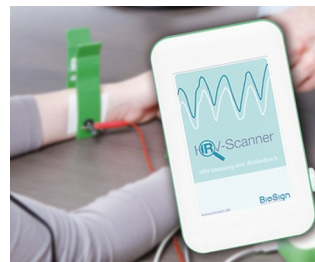
- All types of remote control devices, wireless or with cable
- Measurement and control engineering
- Digital control technology
- Medical and laboratory technology
- Peripheral and interface equipment
- Communications technology
- IoT/IIoT
- Environmental engineering
- Energy management



Digital joystick for ISO bus machines



Geiger counter with logging function



HRV scanner for analysing the autonomic nervous system



Module for smart mobility applications



Multimedia audioguide for museums



Real-time localisation in the healthcare sector



Remote control unit for AutoSat satellite receiver



RFID Reader



RIDEwatcher Multimeter for ride profiles



Sensor for measuring carbon dioxide concentration

## Customising Options

What do you still need for your own very personal product? We can supply enclosures and tuning knobs with all necessary modifications for fitting your electronic components.  
Customising options for Soft-Case

# SOFT-CASE



Machining



Lacquering



Printing



Laser marking



Decor foils



Special material



EMC shielding



Installation / Assembly  
of accessories

## Select Versions



**A9050107**  
SOFT-CASE S  
ABS (UL 94 HB)  
off-white RAL 9002  
51x82x14mm  
IP 54 opt., IP 40



**A9050108**  
SOFT-CASE S  
ABS (UL 94 HB)  
lava  
51x82x14mm  
IP 54 opt., IP 40



**A9050209**  
SOFT-CASE S  
PMMA (IR) (UL 94 HB)  
black RAL 9005  
51x82x14mm  
IP 54 opt., IP 40



**A9051107**  
SOFT-CASE M  
ABS (UL 94 HB)  
off-white RAL 9002  
65x105x19mm  
IP 54 opt., IP 40



**A9051108**  
SOFT-CASE M  
ABS (UL 94 HB)  
lava  
65x105x19mm  
IP 54 opt., IP 40



**A9051117**  
SOFT-CASE M  
ABS (UL 94 HB)  
off-white RAL 9002  
65x105x19mm  
IP 40



**A9051118**  
SOFT-CASE M  
ABS (UL 94 HB)  
lava  
65x105x19mm  
IP 40



**A9051209**  
SOFT-CASE M  
PMMA (IR) (UL 94 HB)  
black RAL 9005  
65x105x19mm  
IP 54 opt., IP 40

# SOFT-CASE



**A9051219**  
SOFT-CASE M  
PMMA (IR) (UL 94 HB)  
black RAL 9005  
65x105x19mm  
IP 40



**A9052107**  
SOFT-CASE L  
ABS (UL 94 HB)  
off-white RAL 9002  
73x117x24mm  
IP 54 opt., IP 40



**A9052108**  
SOFT-CASE L  
ABS (UL 94 HB)  
lava  
73x117x24mm  
IP 54 opt., IP 40



**A9052117**  
SOFT-CASE L  
ABS (UL 94 HB)  
off-white RAL 9002  
73x117x24mm  
IP 40



**A9052118**  
SOFT-CASE L  
ABS (UL 94 HB)  
lava  
73x117x24mm  
IP 40



**A9052127**  
SOFT-CASE L  
ABS (UL 94 HB)  
off-white RAL 9002  
73x117x24mm  
IP 40



**A9052128**  
SOFT-CASE L  
ABS (UL 94 HB)  
lava  
73x117x24mm  
IP 40



**A9052209**  
SOFT-CASE L  
PMMA (IR) (UL 94 HB)  
black RAL 9005  
73x117x24mm  
IP 54 opt., IP 40



**A9052219**  
SOFT-CASE L  
PMMA (IR) (UL 94 HB)  
black RAL 9005  
73x117x24mm  
IP 40



**A9052229**  
SOFT-CASE L  
PMMA (IR) (UL 94 HB)  
black RAL 9005  
73x117x24mm  
IP 40



**A9053107**  
SOFT-CASE XL  
ABS (UL 94 HB)  
off-white RAL 9002  
92x150x28mm  
IP 40



**A9053108**  
SOFT-CASE XL  
ABS (UL 94 HB)  
lava  
92x150x28mm  
IP 40



**A9053117**  
SOFT-CASE XL  
ABS (UL 94 HB)  
off-white RAL 9002  
92x150x28mm  
IP 40



**A9053118**  
SOFT-CASE XL  
ABS (UL 94 HB)  
lava  
92x150x28mm  
IP 40



**A9053209**  
SOFT-CASE XL  
PMMA (IR) (UL 94 HB)  
black RAL 9005  
92x150x28mm  
IP 40



**A9053219**  
SOFT-CASE XL  
PMMA (IR) (UL 94 HB)  
black RAL 9005  
92x150x28mm  
IP 40

# SOFT-CASE

## Accessory "intermediate ring"



**A9150011**  
Intermediate ring S  
ABS (UL 94 HB)  
matt chromed  
54x85x12mm



**A9150017**  
Intermediate ring S  
ABS (UL 94 HB)  
off-white RAL 9002  
54x85x12mm



**A9150018**  
Intermediate ring S  
ABS (UL 94 HB)  
lava  
54x85x12mm



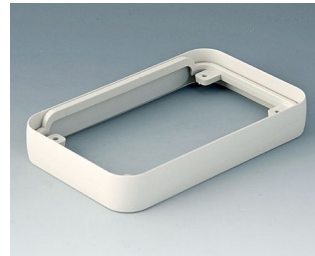
**A9150118**  
Intermediate protection ring S  
SEBS (TPE)  
volcano  
54x85x12mm



**A9150219**  
Intermediate ring S  
PMMA (IR) (UL 94 HB)  
black RAL 9005  
54x85x12mm



**A9151011**  
Intermediate ring M  
ABS (UL 94 HB)  
matt chromed  
68x108x16mm



**A9151017**  
Intermediate ring M  
ABS (UL 94 HB)  
off-white RAL 9002  
68x108x16mm



**A9151018**  
Intermediate ring M  
ABS (UL 94 HB)  
lava  
68x108x16mm



**A9151118**  
Intermediate protection ring M  
SEBS (TPE)  
volcano  
68x108x16mm



**A9152129**  
Intermediate ring M  
PMMA (IR) (UL 94 HB)  
black RAL 9005  
68x108x16mm



**A9152011**  
Intermediate ring L  
ABS (UL 94 HB)  
matt chromed  
76x120x21mm



**A9152017**  
Intermediate ring L  
ABS (UL 94 HB)  
off-white RAL 9002  
76x120x21mm



**A9152018**  
Intermediate ring L  
ABS (UL 94 HB)  
lava  
76x120x21mm



**A9152118**  
Intermediate protection ring L  
SEBS (TPE)  
volcano  
76x120x21mm



**A9152219**  
Intermediate ring L  
PMMA (IR) (UL 94 HB)  
black RAL 9005  
76x120x21mm



**A9153011**  
Intermediate ring XL  
ABS (UL 94 HB)  
matt chromed  
96x154x26mm

# SOFT-CASE



**A9153017**  
Intermediate ring XL  
ABS (UL 94 HB)  
off-white RAL 9002  
96x154x26mm



**A9153018**  
Intermediate ring XL  
ABS (UL 94 HB)  
lava  
96x154x26mm

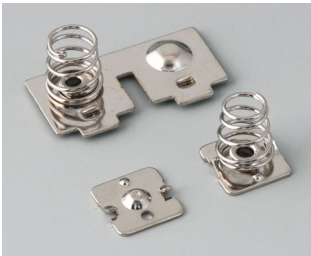


**A9153118**  
Intermediate ring XL  
SEBS (TPE)  
volcano  
96x154x26mm

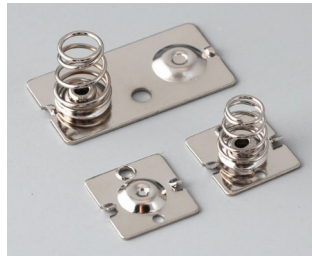


**A9153219**  
Intermediate ring XL  
PMMA (IR) (UL 94 HB)  
black RAL 9005  
96x154x26mm

## Accessory "battery"



**A9151010**  
Set of battery clips, 2 x AAA  
Steel  
nickel-plated



**A9152010**  
Set of battery clips, 2/4 x AA  
Steel  
nickel-plated



**A9174006**  
Set of battery clips, 1 x 9 V  
Steel  
tin-plated

## Accessory "wall/holder"



**A9152047**  
Combi-Clip  
ABS (UL 94 HB)  
off-white RAL 9002  
45x27mm



**A9152048**  
Combi-Clip  
ABS (UL 94 HB)  
lava  
45x27mm



**A9152049**  
Combi-Clip  
ABS (UL 94 HB)  
black RAL 9005  
45x27mm

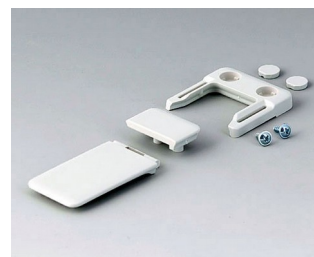
## Accessory "carrying"



**A9100001**  
Ring eyelet  
PA 6  
volcano



**A9100002**  
Ring eyelet  
PA 6  
volcano



**A9152047**  
Combi-Clip  
ABS (UL 94 HB)  
off-white RAL 9002  
45x27mm



**A9152048**  
Combi-Clip  
ABS (UL 94 HB)  
lava  
45x27mm

# SOFT-CASE



**A9152049**  
 Combi-Clip  
 ABS (UL 94 HB)  
 black RAL 9005  
 45x27mm



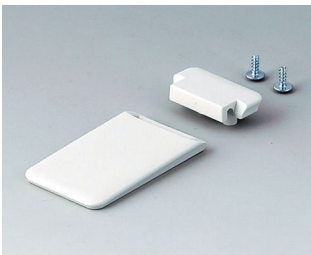
**B9106128**  
 Strap eyelet  
 ABS (UL 94 HB)  
 lava

## Accessory "screws"



**A0304031**  
 Self-tapping screws 2.2 x 5 mm  
 (PZ1)

## Accessory



**A9152057**  
 Tilt foot bar  
 ABS (UL 94 HB)  
 off-white RAL 9002



**A9152058**  
 Tilt foot bar  
 ABS (UL 94 HB)  
 lava



**A9152059**  
 Tilt foot bar  
 ABS (UL 94 HB)  
 black RAL 9005

Subject to technical modification without notice. © by OKW Gehäusesysteme, Buchen/Germany.