

# CARRYTEC

## Plastic enclosures with integrated handle

CARRYTEC plastic enclosures are unique in offering a functional handle for many different tasks and situations, indoors and outdoors.

- integrated handle with soft insert for perfect, non-slip grip
- CARRYTEC M in a slim enclosure version for mounting tablets etc.
- handle located above the centre of gravity for balanced carrying
- rear can be installed on a tripod or support arm systems for fast positioning and alignment of the viewing and operating panels, and orderly cable management
- especially large surface area that is ideal for user interfaces (S: 8,4"/21 cm; M: 10,4"/26 cm; L: 13,4"/34 cm)
- ample installation depth and plenty of room for interfaces, yet slim appearance
- interfaces are protected by inset areas on the underside
- secure storage on table stand and/or wall suspension element; easy transmission of data and charging current, contacts as accessories (except slim enclosure version)
- holding clamp for round tubes and rails according to DIN EN ISO 19054
- available moulded in impact resistant plastic material, and darker colours, for tough/dirty conditions indoor or outdoor
- protection class IP 54 with sealing (accessory)
- recessed operating area for protecting the membrane keypad
- the enclosures are easy to clean
- a battery compartment for 5 x AA cells can be fitted (machining required)
- optional protection bags for carrying probes, sensors, cables etc. (sizes S and M)
- internal fastening pillars for PCBs



# CARRYTEC

## Applications and Examples

Unique variety of possible uses: mobile – desktop – wall mounted – rail mounted – round tube – tripod – suspension arm. Depending on the application (indoor/outdoor) this innovative enclosure is available in different materials, e.g. high-impact plastic material in darker colours for tough conditions.

- Medical, e.g. emergency systems, monitoring and alarm equipment
- Diagnostics, therapy, laboratory devices
- Test and measurement equipment
- Communication technology
- Mobile terminals, data collection units
- Energy management systems
- Sensors
- Industry 4.0, smart factory
- Machine building and construction equipment
- Agricultural economics, forestry



Air velocity meter



Battery filler for aviation batteries



CNC Machine Monitoring



Diagnostic camera for illustrating the machine status



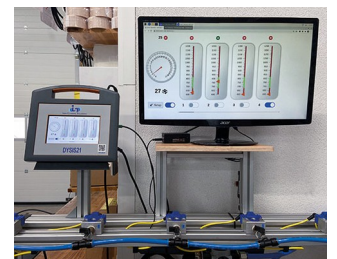
Indoor Farming Monitoring



Mobile radio remote control unit for orbital welding system



Mobile testing device for cost-effective fault analysis



Monitoring system for cleaning nozzles



Multi-functional measuring instrument



Patient Simulation System



Portable receiver

## Customising Options

What do you still need for your own very personal product? We can supply enclosures and tuning knobs with all necessary modifications for fitting your electronic components. Customising options for Carrytec

# CARRYTEC



Machining



Lacquering



Printing



Laser marking



Decor foils



EMC shielding



Installation / Assembly  
of accessories

## Select Versions



**B4208107**  
CARRYTEC S  
ABS (UL 94 HB)  
off-white RAL 9002  
222x205x80mm  
IP 54 opt.



**B4208208**  
CARRYTEC S  
ASA+PC (UL 94 V-0)  
lava  
222x205x80mm  
IP 54 opt.



**B4210107**  
CARRYTEC M  
ABS (UL 94 HB)  
off-white RAL 9002  
270x247x91mm  
IP 54 opt.



**B4210127**  
CARRYTEC M slim version  
ABS (UL 94 HB)  
off-white RAL 9002  
270x247x42mm  
IP 54 opt.



**B4210208**  
CARRYTEC M  
ASA+PC (UL 94 V-0)  
lava  
270x247x91mm  
IP 54 opt.



**B4210228**  
CARRYTEC M slim version  
ASA+PC (UL 94 V-0)  
lava  
270x247x42mm  
IP 54 opt.



**B4213107**  
CARRYTEC L  
ABS (UL 94 HB)  
off-white RAL 9002  
348x303x117mm  
IP 54 opt.



**B4213208**  
CARRYTEC L  
ASA+PC (UL 94 V-0)  
lava  
348x303x117mm  
IP 54 opt.

# CARRYTEC

## Accessory "battery"

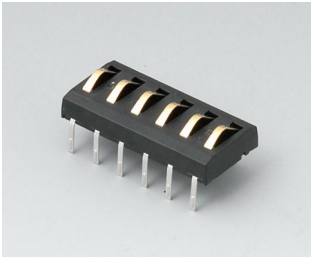


**A9338117**  
Battery compartment kit, 5 x AA  
ABS (UL 94 HB)  
off-white RAL 9002  
93x98mm  
IP 54



**A9338218**  
Battery compartment kit, 5 x AA  
ASA+PC (UL 94 V-0)  
lava  
93x98mm  
IP 54

## Accessory "station"



**A9178007**  
Contacts, male  
gold-plated



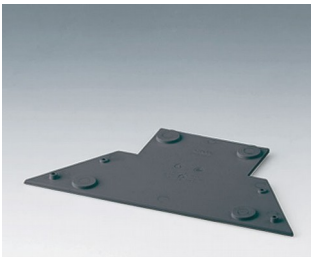
**B4308117**  
Station S/M  
ABS (UL 94 HB)  
off-white RAL 9002



**B4308127**  
Base plate for station  
ABS (UL 94 HB)  
off-white RAL 9002



**B4308218**  
Station S/M  
ASA+PC (UL 94 V-0)  
lava



**B4308228**  
Base plate for station  
ASA+PC (UL 94 V-0)  
lava



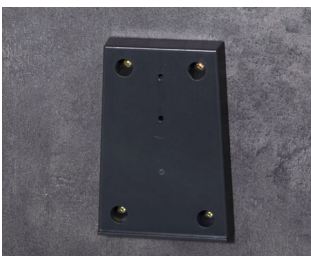
**B4313117**  
Station L  
ABS (UL 94 HB)  
off-white RAL 9002



**B4313147**  
Adapter for Station L  
ABS (UL 94 HB)  
off-white RAL 9002



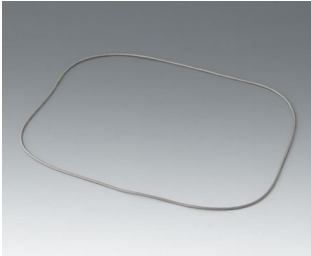
**B4313218**  
Station L  
ASA+PC (UL 94 V-0)  
lava



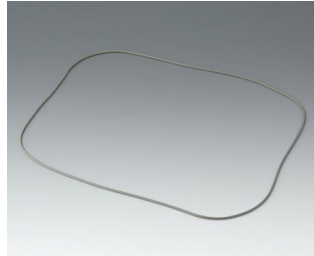
**B4313248**  
Adapter for Station L  
ASA+PC (UL 94 V-0)  
lava

# CARRYTEC

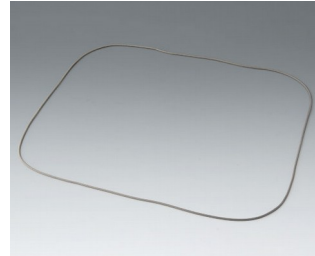
## Accessory "protection"



**B4308001**  
Sealing S

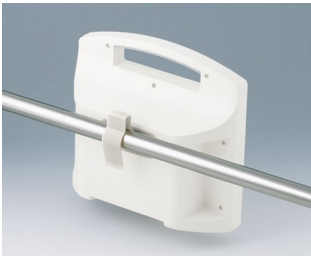


**B4310001**  
Sealing M

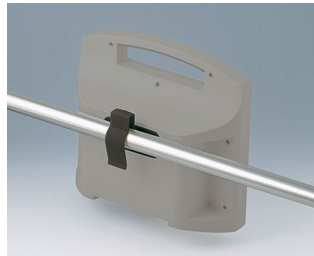


**B4313001**  
Sealing L

## Accessory "wall/holder"



**B4308237**  
Holding clamps  
PA 6  
off-white RAL 9002



**B4308238**  
Holding clamps  
PA 6  
lava

## Accessory "carrying"



**B4308600**  
Carrying case S, right-hand side  
grey  
82x180x65mm



**B4308610**  
Carrying case S, left-hand side  
grey  
82x180x65mm



**B4308650**  
Shoulder strap  
grey  
1400mm



**B4310600**  
Carrying case M, right-hand side  
grey  
99x214x64mm



**B4310610**  
Carrying case M, left-hand side  
grey  
99x214x64mm

# CARRYTEC

## Accessory "screws"

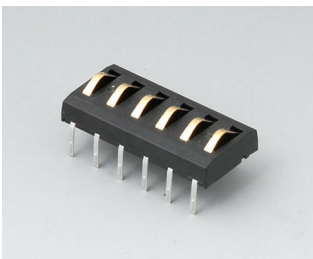


**A0325080**  
Self-tapping screws 2.5 x 8 mm  
(PZ1)

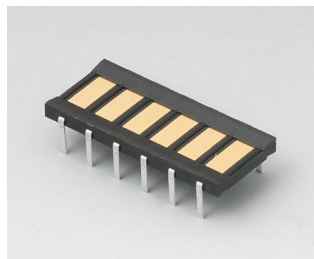


**A0399T10**  
Torx T10 screwdriver

## Accessory



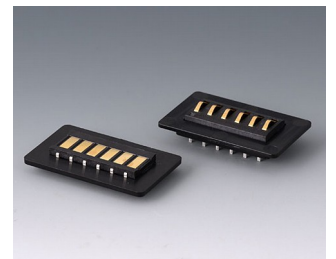
**A9178007**  
Contacts, male  
gold-plated



**A9178008**  
Contacts, female  
gold-plated



**A9193042**  
Mounting plates for contacts  
ABS (UL 94 HB)  
black RAL 9005



**A9193044**  
Contacting kit, 6-pin  
ABS (UL 94 HB)  
black RAL 9005

Subject to technical modification without notice. © by OKW Gehäusesysteme, Buchen/Germany.