

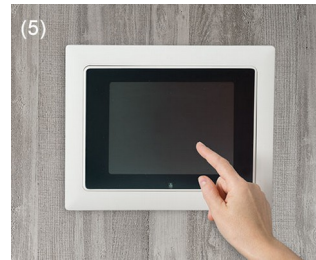
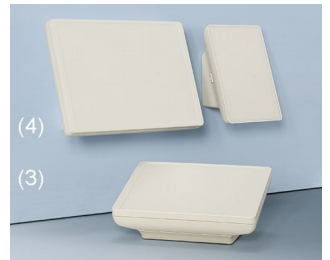
INTERFACE-TERMINAL

Multifunction electronic enclosures

Highly innovative modular plastic enclosures system which can be configured to meet all the requirements of today's man-machine interfaces.

- aesthetic and ergonomic design
- uniquely, the operator can decide to use the electronics as a mobile or as a stationary unit
- plenty of space for operating elements, graphic displays and touch screens (S: 6.4"/16 cm, M: 8.4"/21 cm, L: 10.4"/26 cm)
- available with either flat or high bottom part for individual installation configurations, interfaces, cable inputs and outputs etc.
- optional front panel styles: ABS cover and flat panel, aluminium front panel and glass panel for touch screens
installation of tablets on demand
- protection class IP 54 with sealing gaskets (accessory)
- internal fastening pillars for PCBs and components
- ordered as individual components for multiple configurations:
- **mobile (1)**
with/without battery compartment (5 x AA), accessible from the outside, incl. protection against incorrect insertion as well as anti-rotation device; user-friendly design with attractive flat styling in the handle area; finger recesses on the underside ensure a secure grip
- **enclosures with base or flat wall suspension element (2)**
for data transmission and charging the enclosure snaps into base or flat wall suspension element; contacts available as accessories; operating panel can be mounted either vertically or horizontally; the ergonomically inclined base offers plenty of space for electronics
- **desk-top screwed (3)**
operating panel inclined by 20° whether vertically or horizontally mounted; hidden screw fixing; the ergonomically inclined base offers plenty of space for connectors and cable glands; rubber feet supplied with the case ensures non-slip desktop positioning
- **desk-top/wall mounting, secured by latch lock (4)**
unique interface between a stationary and a mobile component; simplified assembly by snap-in interfaces; the ergonomically inclined base offers plenty of space for plug connectors, electronics as well as wiring; base freely accessible; direct wall mounting of the base; mobile unit can be mounted either vertically or horizontally
- **installation enclosures (5)**
if the architectural standards are particularly high, i.e. in historically buildings, INTERFACE-TERMINAL enclosures can also be harmoniously integrated in walls or front panels; installation in plant and machinery is also possible; easy wall installation with installation assembly kit

INTERFACE-TERMINAL



INTERFACE-TERMINAL

Applications and Examples

Unique variety of applications: handheld – desk-top – wall mounted – installation

- Peripheral and interface equipment
- Office applications
- Communications technology
- Safety engineering
- Biometrics
- Medical and laboratory technology
- Health care
- IoT/IIoT
- Gateways
- Automation
- Measuring/regulating/controlling



Device for bioelectrical patient analysis



Self-monitoring emergency call system



Smart Home Console



Terminal for personnel time recording



Wireless data logger

Customising Options

What do you still need for your own very personal product? We can supply enclosures and tuning knobs with all necessary modifications for fitting your electronic components.

Customising options for Interface-Terminal

INTERFACE-TERMINAL



Machining



Lacquering



Printing



Laser marking



Decor foils



Special material

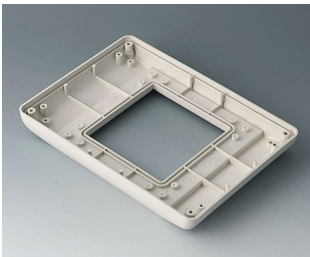


EMC shielding

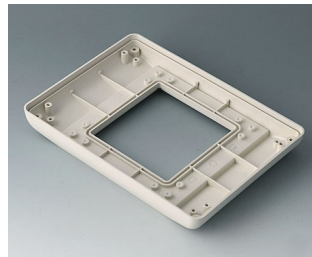


Installation / Assembly
of accessories

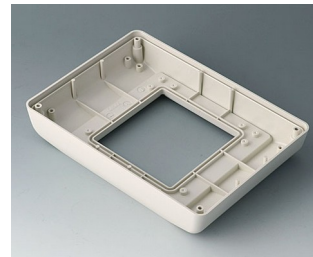
Select Versions



B4042707
Bottom part S flat, version I
ABS (UL 94 HB)
off-white RAL 9002
190x135x24.5mm
IP 54 opt.



B4042717
Bottom part S flat, version II
ABS (UL 94 HB)
off-white RAL 9002
190x135x24.5mm
IP 54 opt.



B4042757
Bottom part S high, version I
ABS (UL 94 HB)
off-white RAL 9002
190x135x34.5mm
IP 54 opt.



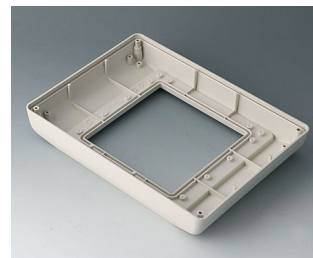
B4042767
Bottom part S high, version II
ABS (UL 94 HB)
off-white RAL 9002
190x135x34.5mm
IP 54 opt.



B4044707
Bottom part M flat, version I
ABS (UL 94 HB)
off-white RAL 9002
225x165x25.5mm
IP 54 opt.



B4044717
Bottom part M flat, version II
ABS (UL 94 HB)
off-white RAL 9002
225x165x25.5mm
IP 54 opt.



B4044757
Bottom part M high, version I
ABS (UL 94 HB)
off-white RAL 9002
225x165x35.5mm
IP 54 opt.



B4044767
Bottom part M high, version II
ABS (UL 94 HB)
off-white RAL 9002
225x165x35.5mm
IP 54 opt.

INTERFACE-TERMINAL



B4046707
Bottom part L flat, version I
ABS (UL 94 HB)
off-white RAL 9002
275x195x26.5mm
IP 54 opt.



B4046717
Bottom part L flat, version II
ABS (UL 94 HB)
off-white RAL 9002
275x195x26.5mm
IP 54 opt.



B4046757
Bottom part L high, version I
ABS (UL 94 HB)
off-white RAL 9002
275x195x36.5mm
IP 54 opt.



B4046767
Bottom part L high, version II
ABS (UL 94 HB)
off-white RAL 9002
275x195x36.5mm
IP 54 opt.

System components to complete



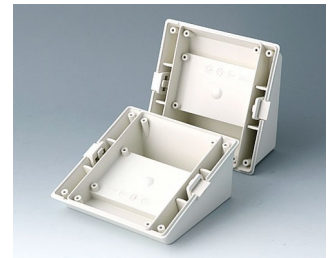
B4042407
Cover S
ABS (UL 94 HB)
off-white RAL 9002
190x135x14mm



B4042827
Base S - desk-top -
ABS (UL 94 HB)
off-white RAL 9002
123x123x53mm



B4042837
Base S - charging station, case
deposit mobile
ABS (UL 94 HB)
off-white RAL 9002
123x123x60mm



B4042847
Base S - desk-top/wall -
ABS (UL 94 HB)
off-white RAL 9002
123x123x53mm



B4044407
Cover M
ABS (UL 94 HB)
off-white RAL 9002
225x165x14mm



B4044827
Base M - desk-top -
ABS (UL 94 HB)
off-white RAL 9002
153x153x63mm



B4044837
Base M - charging station, case
deposit mobile
ABS (UL 94 HB)
off-white RAL 9002
153x153x70mm



B4044847
Base M - desk-top/wall -
ABS (UL 94 HB)
off-white RAL 9002
153x153x63mm



B4046407
Cover L
ABS (UL 94 HB)
off-white RAL 9002
275x195x25.5mm



B4046427
Cover L, for iPad Air
ABS (UL 94 HB)
off-white RAL 9002
275x195x25.5mm



B4046827
Base L - desk-top -
ABS (UL 94 HB)
off-white RAL 9002
183x183x73mm



B4046837
Base L - charging station, case
deposit mobile
ABS (UL 94 HB)
off-white RAL 9002
183x183x80mm

INTERFACE-TERMINAL



B4046847
 Base L - desk-top/wall -
 ABS (UL 94 HB)
 off-white RAL 9002
 183x183x73mm



B4142047
 Battery compartment and lid S, 5
 x AA
 ABS (UL 94 HB)
 off-white RAL 9002



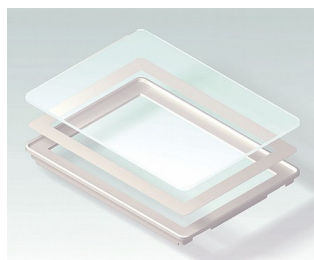
B4142106
 Front panel S
 Aluminium
 matt anodised
 186.5x131.5x2mm



B4142107
 Front panel S
 ABS (UL 94 HB)
 off-white RAL 9002
 190.6x135.6x14.5mm



B4142167
 Bottom panel with handle recess
 S
 ABS (UL 94 HB)
 off-white RAL 9002



B4142203
 Glass panel S
 Glass
 clear
 190.6x135.6x16.7mm



B4142247
 Wall suspension element S
 ABS (UL 94 HB)
 off-white RAL 9002



B4142257
 Bottom panel with snap-in strips
 S
 ABS (UL 94 HB)
 off-white RAL 9002



B4142587
 Installation assembly kit S, flat
 ABS (UL 94 HB)
 off-white RAL 9002
 234x185mm



B4142597
 Installation assembly kit S, high
 ABS (UL 94 HB)
 off-white RAL 9002
 234x185mm



B4144047
 Battery compartment and lid M,
 5 x AA
 ABS (UL 94 HB)
 off-white RAL 9002



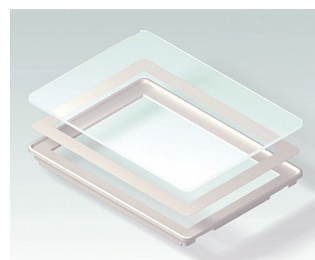
B4144106
 Front panel M
 Aluminium
 matt anodised
 221.5x161.5x2mm



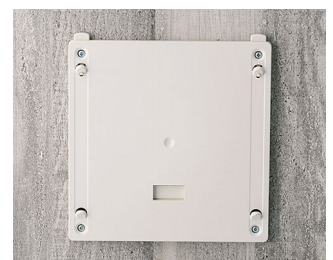
B4144107
 Front panel M
 ABS (UL 94 HB)
 off-white RAL 9002
 225.6x165.6x15.5mm



B4144167
 Bottom panel with handle recess
 M
 ABS (UL 94 HB)
 off-white RAL 9002

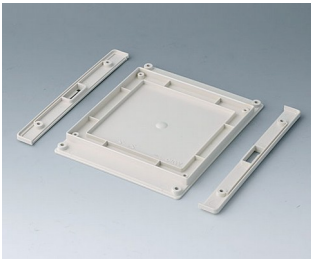


B4144203
 Glass panel M
 Glass
 clear
 225.6x165.6x17.7mm

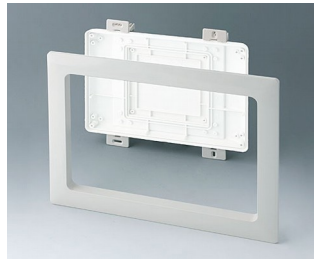


B4144247
 Wall suspension element M
 ABS (UL 94 HB)
 off-white RAL 9002

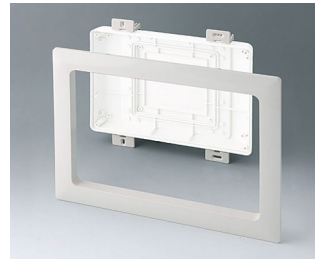
INTERFACE-TERMINAL



B4144257
Bottom panel with snap-in strips
M
ABS (UL 94 HB)
off-white RAL 9002



B4144587
Installation assembly kit M, flat
ABS (UL 94 HB)
off-white RAL 9002
272x218mm



B4144597
Installation assembly kit M, high
ABS (UL 94 HB)
off-white RAL 9002
272x218mm



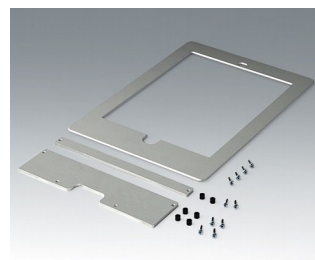
B4146047
Battery compartment and lid L, 5
x AA
ABS (UL 94 HB)
off-white RAL 9002



B4146106
Front panel L
Aluminium
matt anodised
271.5x191.5x2mm



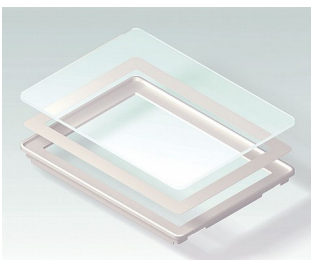
B4146107
Front panel L
ABS (UL 94 HB)
off-white RAL 9002
275.6x195.6x15.5mm



B4146126
Front panel L, for iPad Air
Aluminium
matt anodised
275.4x195.4x4mm



B4146167
Bottom panel with handle recess
L
ABS (UL 94 HB)
off-white RAL 9002



B4146203
Glass panel L
Glass
clear
275.6x195.6x17.7mm



B4146247
Wall suspension element L
ABS (UL 94 HB)
off-white RAL 9002



B4146257
Bottom panel with snap-in strips
L
ABS (UL 94 HB)
off-white RAL 9002



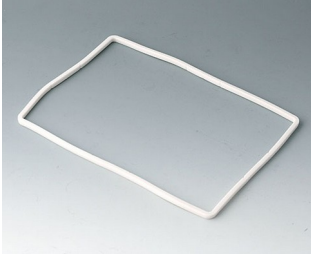
B4146587
Installation assembly kit L, flat
ABS (UL 94 HB)
off-white RAL 9002
325x251mm



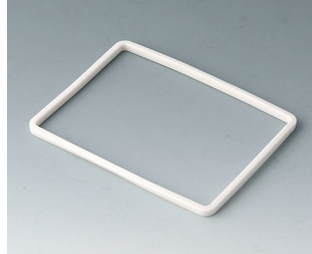
B4146597
Installation assembly kit L, high
ABS (UL 94 HB)
off-white RAL 9002
325x251mm

INTERFACE-TERMINAL

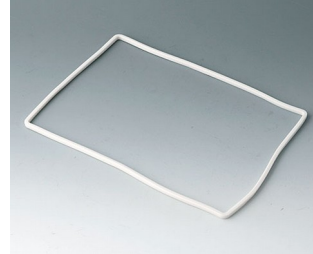
Accessory "protection"



B4142005
Sealing S (bottom part - front design)
SEBS (TPE)



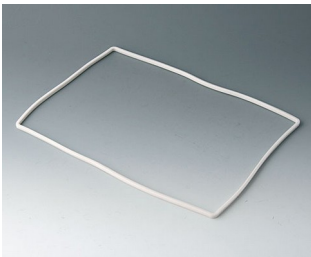
B4142006
Sealing S (bottom part - base/bot. panel/bat. comp...)
SEBS (TPE)



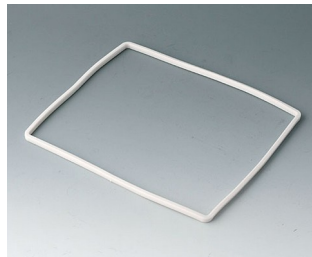
B4144005
Sealing M (bottom part - front design)
SEBS (TPE)



B4144006
Sealing M (bottom part - base/bot. panel/bat. comp...)
SEBS (TPE)

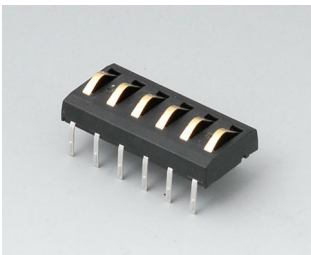


B4146005
Sealing L (bottom part - front design)
SEBS (TPE)

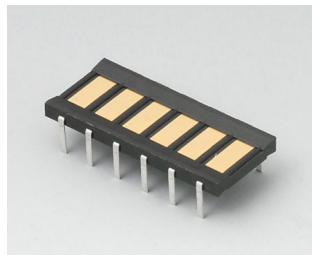


B4146006
Sealing L (bottom part - base/bot. panel/bat. comp...)
SEBS (TPE)

Accessory



A9178007
Contacts, male
gold-plated



A9178008
Contacts, female
gold-plated

Subject to technical modification without notice. © by OKW Gehäusesysteme, Buchen/Germany.