

SMART-BOX

Advanced IP 66 plastic enclosures

The rounded ergonomic design of the SMART-BOX series is designed to enhance the visual impact and tactile quality of your industrial electronics.

- convincing design; hinged flush-fitting trims hide all the case fixings
- high-quality material ASA+PC (UL 94 V-0) for use in tough conditions; also flame-retardant and self-extinguishing
- high protection class IP 66 (width 90/110/130/150), IP 65 (width 170) ; with pre-fitted sealing gaskets in the top
- high-quality A2 stainless steel alloy screws with high corrosion resistance – even against aggressive substances
- universal use for wall mount and desktop applications
- screw shafts for wall mounting hidden under the hinged trims
- case feet (accessory), simply snap-in ensure non-slip desktop positioning
- two plastic lid retaining straps included
- recessed operating area for protecting a membrane keypad; additional surface for labels on the underside
- internal fastening pillars for PCBs and DIN rails



SMART-BOX

Applications and Examples

Ideal for design orientated electrical and electronic applications, e.g.

- Heating, air conditioning and ventilation engineering
- Control and system engineering
- Safety technology
- IoT/IIoT
- Smart Factory
- Industry 4.0
- Gateways



Active UHF RFID system



Data logger for machine monitoring



Miniature data logger for crack displacements and climatic data



Pedestrian Alert System



RFID card reader for construction site workers



Universal temperature controller / Temperature difference controller

Customising Options

What do you still need for your own very personal product? We can supply enclosures and tuning knobs with all necessary modifications for fitting your electronic components. Customising options for Smart-Box

SMART-BOX



Machining



Printing



Laser marking



Decor foils



EMC shielding



Installation / Assembly
of accessories

Select Versions



C6009121
SMART-BOX WIDTH 90
ASA+PC (UL 94 V-0)
light grey RAL 7035
120x90x50mm
IP 66



C6009161
SMART-BOX WIDTH 90
ASA+PC (UL 94 V-0)
light grey RAL 7035
160x90x50mm
IP 66



C6011141
SMART-BOX WIDTH 110
ASA+PC (UL 94 V-0)
light grey RAL 7035
140x110x60mm
IP 66



C6011201
SMART-BOX WIDTH 110
ASA+PC (UL 94 V-0)
light grey RAL 7035
200x110x60mm
IP 66



C6013161
SMART-BOX WIDTH 130
ASA+PC (UL 94 V-0)
light grey RAL 7035
160x130x60mm
IP 66



C6013221
SMART-BOX WIDTH 130
ASA+PC (UL 94 V-0)
light grey RAL 7035
220x130x60mm
IP 66



C6015181
SMART-BOX WIDTH 150
ASA+PC (UL 94 V-0)
light grey RAL 7035
180x150x60mm
IP 66



C6017281
SMART-BOX WIDTH 170
ASA+PC (UL 94 V-0)
light grey RAL 7035
280x170x60mm
IP 65

SMART-BOX

Accessory "protection"



C2306917
Pressure equalisation element
M6x0.75
PA 6 (UL 94 HB)
light grey RAL 7035
IP 56



C2310917
Pressure equalisation element
M10x1
PA 6 (UL 94 HB)
light grey RAL 7035
IP 56



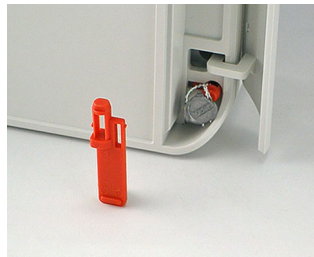
C2316147
Cable grommet
TPE
light grey RAL 7035
IP 67



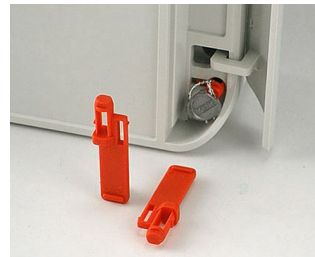
C2320137
Cable grommet
EPDM
light grey RAL 7035
IP 67



C2320147
Cable grommet
TPE
light grey RAL 7035
IP 67



C6100006
Security plug
PA 6
red



C6100016
Set of security
PA 6
red

Accessory "screws"



A0306031
Self-tapping screws 3 x 6 mm
(PZ1)



A0308031
Self-tapping screws 3 x 8 mm
(PZ1)



A0308132
Self-tapping screw 3 x 8 mm
(T10)
Stainless steel

Accessory



A0308132
Self-tapping screw 3 x 8 mm
(T10)
Stainless steel



C2299018
Case feet
TPE (UL 94 HB)

SMART-BOX

Subject to technical modification without notice. © by OKW Gehäusesysteme, Buchen/Germany.