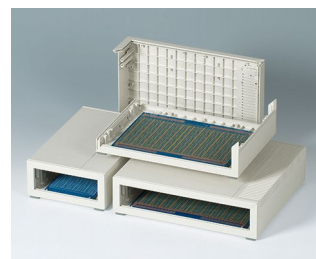
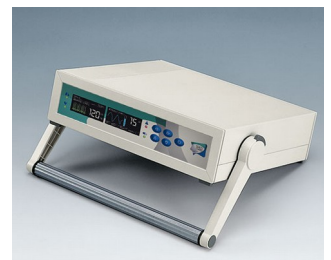


MEDITEC

Large instrument enclosures

MEDITEC plastic enclosures are characterised by a modern, stylish and functional design which is ideal for housing contemporary high-quality electronics equipment.

- stylish and functional design
- versatile design for desktop, wall mount and portable applications
- robust construction with strengthening ribs
- easy assembly technique
- four plan sizes in accordance with eurocard-size PCBs, double and extended
- two standard heights, increased by adding side panels
- ergonomic sloping control panel; if also using a side panel, order the infill panel to close the open gap under the sloping control panel
- plastic front and rear panels for identical surface finishes, easy to machine
- clip-in side trims with/without ventilation slots, in case colour or lagoon green, hide the case fixing screws, other colours on request
- four screw-on non-slip feet included
- optional wall mounting with wall mounting brackets
- versions with handle; for portable applications, if necessary, the adjustment mechanism allows the user to set a practical angle, in increments of 30°
- internal screw pillars for PCBs and components



MEDITEC

Applications and Examples

- Medical, wellness and laboratory devices
- Feedback control
- Test and measurement systems
- Control peripherals, modems and interfaces
- Communication and network technology
- Data collection



amicOx pulse oximeter



Dry milling unit for foot care



NeurOne Tesla EEG System



Pneumatic Lithotripter System

Customising Options

What do you still need for your own very personal product? We can supply enclosures and tuning knobs with all necessary modifications for fitting your electronic components.

Customising options for Meditec



Machining



Lacquering



Printing



Laser marking



Special material



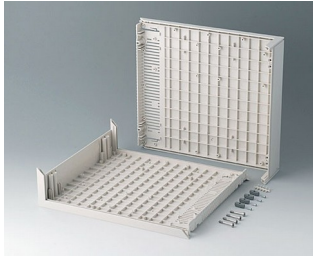
EMC shielding



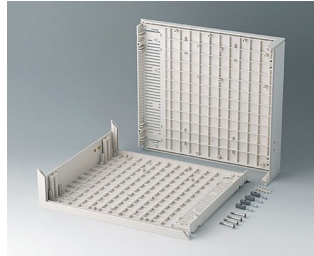
Installation / Assembly
of accessories

MEDITEC

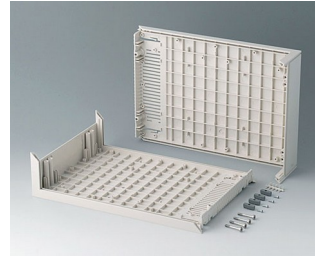
Select Versions



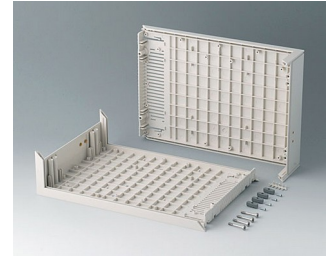
B2010007
L-shells D 220, without holes
ABS (UL 94 HB)
off-white RAL 9002
290x260x74mm



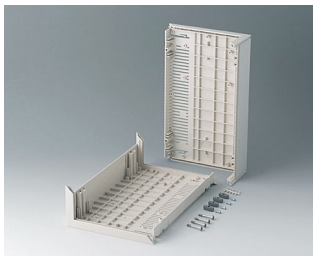
B2010107
L-shells D 220, with holes for
handle
ABS (UL 94 HB)
off-white RAL 9002
290x260x74mm



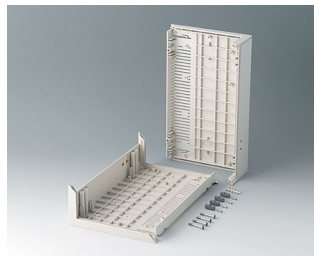
B2011007
L-shells D 160, without holes
ABS (UL 94 HB)
off-white RAL 9002
290x200x74mm



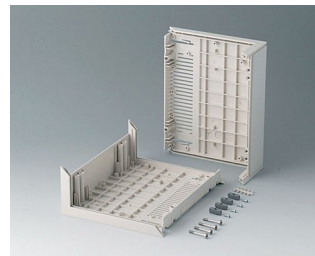
B2011107
L-shells D 160, with holes for
handle
ABS (UL 94 HB)
off-white RAL 9002
290x200x74mm



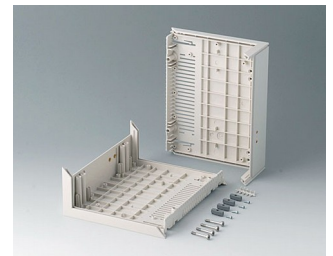
B2012007
L-shells E 220, without holes
ABS (UL 94 HB)
off-white RAL 9002
160x260x74mm



B2012107
L-shells E 220, with holes for
handle
ABS (UL 94 HB)
off-white RAL 9002
160x260x74mm



B2013007
L-shells E 160, without holes
ABS (UL 94 HB)
off-white RAL 9002
160x200x74mm



B2013107
L-shells E 160, with holes for
handle
ABS (UL 94 HB)
off-white RAL 9002
160x200x74mm



B2210005
MEDITEC D 220, without handle
bar
ABS (UL 94 HB)
off-white RAL 9002
290x260x74mm
IP 40



B2210007
MEDITEC D 220, without handle
bar
ABS (UL 94 HB)
off-white RAL 9002
290x260x74mm
IP 40



B2210015
MEDITEC D 220, without handle
bar
ABS (UL 94 HB)
off-white RAL 9002
290x260x74mm
IP 40



B2210017
MEDITEC D 220, without handle
bar
ABS (UL 94 HB)
off-white RAL 9002
290x260x74mm
IP 40

MEDITEC



B2210105
MEDITEC D 220, with handle bar
ABS (UL 94 HB)
off-white RAL 9002
290x260x74mm
IP 40



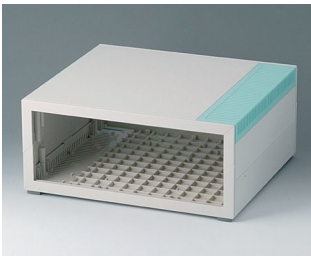
B2210107
MEDITEC D 220, with handle bar
ABS (UL 94 HB)
off-white RAL 9002
290x260x74mm
IP 40



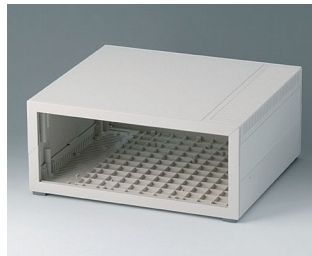
B2210115
MEDITEC D 220, with handle bar
ABS (UL 94 HB)
off-white RAL 9002
290x260x74mm
IP 40



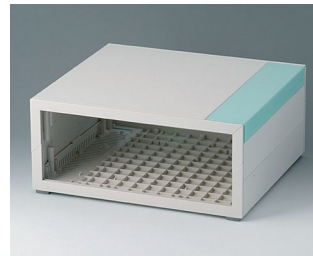
B2210117
MEDITEC D 220, with handle bar
ABS (UL 94 HB)
off-white RAL 9002
290x260x74mm
IP 40



B2210205
MEDITEC D 220, without handle bar
ABS (UL 94 HB)
off-white RAL 9002
290x260x124mm
IP 40



B2210207
MEDITEC D 220, without handle bar
ABS (UL 94 HB)
off-white RAL 9002
290x260x124mm
IP 40



B2210215
MEDITEC D 220, without handle bar
ABS (UL 94 HB)
off-white RAL 9002
290x260x124mm
IP 40



B2210217
MEDITEC D 220, without handle bar
ABS (UL 94 HB)
off-white RAL 9002
290x260x124mm
IP 40



B2210305
MEDITEC D 220, with handle bar
ABS (UL 94 HB)
off-white RAL 9002
290x260x124mm
IP 40



B2210307
MEDITEC D 220, with handle bar
ABS (UL 94 HB)
off-white RAL 9002
290x260x124mm
IP 40



B2210315
MEDITEC D 220, with handle bar
ABS (UL 94 HB)
off-white RAL 9002
290x260x124mm
IP 40



B2210317
MEDITEC D 220, with handle bar
ABS (UL 94 HB)
off-white RAL 9002
290x260x124mm
IP 40



B2211005
MEDITEC D 160, without handle bar
ABS (UL 94 HB)
off-white RAL 9002
290x200x74mm
IP 40



B2211007
MEDITEC D 160, without handle bar
ABS (UL 94 HB)
off-white RAL 9002
290x200x74mm
IP 40



B2211015
MEDITEC D 160, without handle bar
ABS (UL 94 HB)
off-white RAL 9002
290x200x74mm
IP 40



B2211017
MEDITEC D 160, without handle bar
ABS (UL 94 HB)
off-white RAL 9002
290x200x74mm
IP 40

MEDITEC



B2211105
MEDITEC D 160, with handle bar
ABS (UL 94 HB)
off-white RAL 9002
290x200x74mm
IP 40



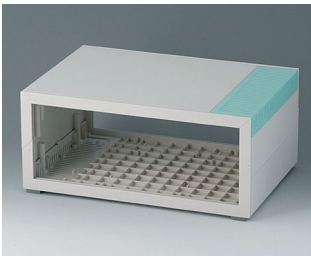
B2211107
MEDITEC D 160, with handle bar
ABS (UL 94 HB)
off-white RAL 9002
290x200x74mm
IP 40



B2211115
MEDITEC D 160, with handle bar
ABS (UL 94 HB)
off-white RAL 9002
290x200x74mm
IP 40



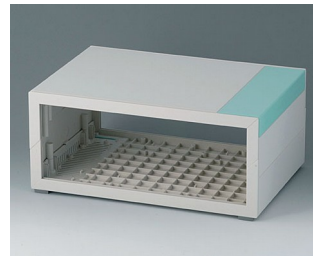
B2211117
MEDITEC D 160, with handle bar
ABS (UL 94 HB)
off-white RAL 9002
290x200x74mm
IP 40



B2211205
MEDITEC D 160, without handle bar
ABS (UL 94 HB)
off-white RAL 9002
290x200x124mm
IP 40



B2211207
MEDITEC D 160, without handle bar
ABS (UL 94 HB)
off-white RAL 9002
290x200x124mm
IP 40



B2211215
MEDITEC D 160, without handle bar
ABS (UL 94 HB)
off-white RAL 9002
290x200x124mm
IP 40



B2211217
MEDITEC D 160, without handle bar
ABS (UL 94 HB)
off-white RAL 9002
290x200x124mm
IP 40



B2211305
MEDITEC D 160, with handle bar
ABS (UL 94 HB)
off-white RAL 9002
290x200x124mm
IP 40



B2211307
MEDITEC D 160, with handle bar
ABS (UL 94 HB)
off-white RAL 9002
290x200x124mm
IP 40



B2211315
MEDITEC D 160, with handle bar
ABS (UL 94 HB)
off-white RAL 9002
290x200x124mm
IP 40



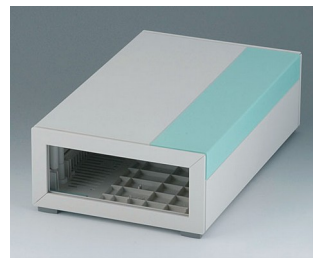
B2211317
MEDITEC D 160, with handle bar
ABS (UL 94 HB)
off-white RAL 9002
290x200x124mm
IP 40



B2212005
MEDITEC E 220, without handle bar
ABS (UL 94 HB)
off-white RAL 9002
160x260x74mm
IP 40



B2212007
MEDITEC E 220, without handle bar
ABS (UL 94 HB)
off-white RAL 9002
160x260x74mm
IP 40



B2212015
MEDITEC E 220, without handle bar
ABS (UL 94 HB)
off-white RAL 9002
160x260x74mm
IP 40



B2212017
MEDITEC E 220, without handle bar
ABS (UL 94 HB)
off-white RAL 9002
160x260x74mm
IP 40

MEDITEC



B2212105
MEDITEC E 220, with handle bar
ABS (UL 94 HB)
off-white RAL 9002
160x260x74mm
IP 40



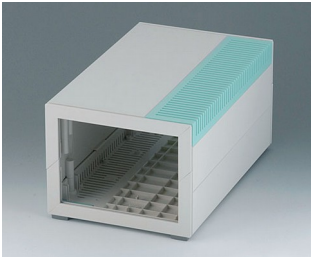
B2212107
MEDITEC E 220, with handle bar
ABS (UL 94 HB)
off-white RAL 9002
160x260x74mm
IP 40



B2212115
MEDITEC E 220, with handle bar
ABS (UL 94 HB)
off-white RAL 9002
160x260x74mm
IP 40



B2212117
MEDITEC E 220, with handle bar
ABS (UL 94 HB)
off-white RAL 9002
160x260x74mm
IP 40



B2212205
MEDITEC E 220, without handle bar
ABS (UL 94 HB)
off-white RAL 9002
160x260x124mm
IP 40



B2212207
MEDITEC E 220, without handle bar
ABS (UL 94 HB)
off-white RAL 9002
160x260x124mm
IP 40



B2212215
MEDITEC E 220, without handle bar
ABS (UL 94 HB)
off-white RAL 9002
160x260x124mm
IP 40



B2212217
MEDITEC E 220, without handle bar
ABS (UL 94 HB)
off-white RAL 9002
160x260x124mm
IP 40



B2212305
MEDITEC E 220, with handle bar
ABS (UL 94 HB)
off-white RAL 9002
160x260x124mm
IP 40



B2212307
MEDITEC E 220, with handle bar
ABS (UL 94 HB)
off-white RAL 9002
160x260x124mm
IP 40



B2212315
MEDITEC E 220, with handle bar
ABS (UL 94 HB)
off-white RAL 9002
160x260x124mm
IP 40



B2212317
MEDITEC E 220, with handle bar
ABS (UL 94 HB)
off-white RAL 9002
160x260x124mm
IP 40



B2213005
MEDITEC E 160, without handle bar
ABS (UL 94 HB)
off-white RAL 9002
160x200x74mm
IP 40



B2213007
MEDITEC E 160, without handle bar
ABS (UL 94 HB)
off-white RAL 9002
160x200x74mm
IP 40



B2213015
MEDITEC E 160, without handle bar
ABS (UL 94 HB)
off-white RAL 9002
160x200x74mm
IP 40



B2213017
MEDITEC E 160, without handle bar
ABS (UL 94 HB)
off-white RAL 9002
160x200x74mm
IP 40

MEDITEC



B2213105
MEDITEC E 160, with handle bar
ABS (UL 94 HB)
off-white RAL 9002
160x200x74mm
IP 40



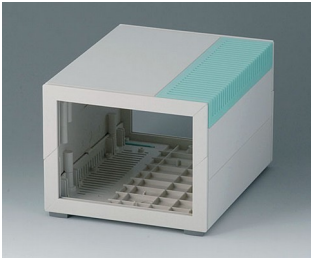
B2213107
MEDITEC E 160, with handle bar
ABS (UL 94 HB)
off-white RAL 9002
160x200x74mm
IP 40



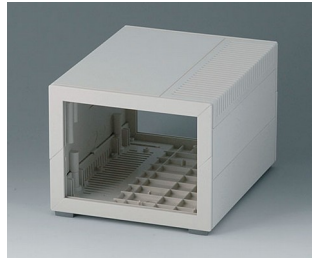
B2213115
MEDITEC E 160, with handle bar
ABS (UL 94 HB)
off-white RAL 9002
160x200x74mm
IP 40



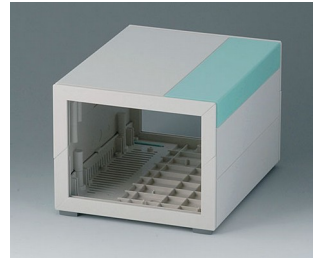
B2213117
MEDITEC E 160, with handle bar
ABS (UL 94 HB)
off-white RAL 9002
160x200x74mm
IP 40



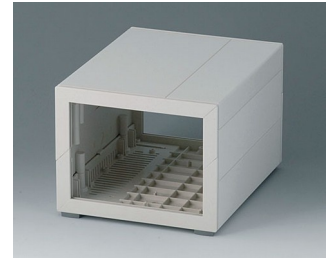
B2213205
MEDITEC E 160, without handle bar
ABS (UL 94 HB)
off-white RAL 9002
160x200x124mm
IP 40



B2213207
MEDITEC E 160, without handle bar
ABS (UL 94 HB)
off-white RAL 9002
160x200x124mm
IP 40



B2213215
MEDITEC E 160, without handle bar
ABS (UL 94 HB)
off-white RAL 9002
160x200x124mm
IP 40



B2213217
MEDITEC E 160, without handle bar
ABS (UL 94 HB)
off-white RAL 9002
160x200x124mm
IP 40



B2213305
MEDITEC E 160, with handle bar
ABS (UL 94 HB)
off-white RAL 9002
160x200x124mm
IP 40



B2213307
MEDITEC E 160, with handle bar
ABS (UL 94 HB)
off-white RAL 9002
160x200x124mm
IP 40



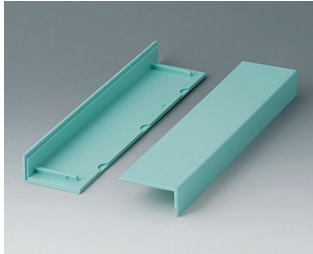
B2213315
MEDITEC E 160, with handle bar
ABS (UL 94 HB)
off-white RAL 9002
160x200x124mm
IP 40



B2213317
MEDITEC E 160, with handle bar
ABS (UL 94 HB)
off-white RAL 9002
160x200x124mm
IP 40

MEDITEC

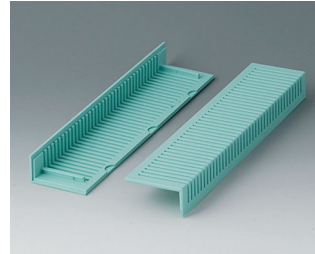
System components to complete



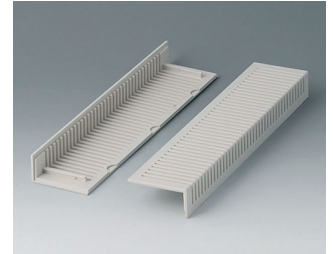
B2020005
Side trims 220, without ventilation
ABS
lagoon



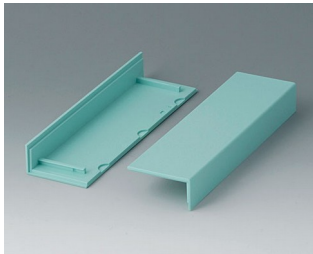
B2020007
Side trims 220, without ventilation
ABS (UL 94 HB)
off-white RAL 9002



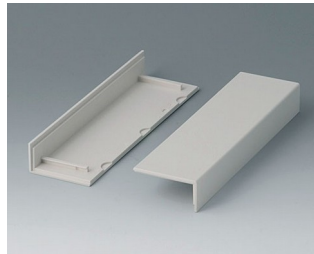
B2021005
Side trims 220, with ventilation
ABS
lagoon



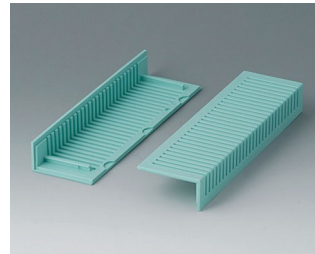
B2021007
Side trims 220, with ventilation
ABS (UL 94 HB)
off-white RAL 9002



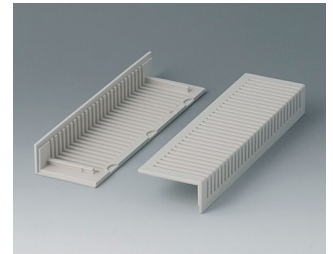
B2022005
Side trims 160, without ventilation
ABS
lagoon



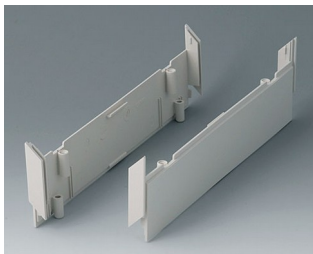
B2022007
Side trims 160, without ventilation
ABS (UL 94 HB)
off-white RAL 9002



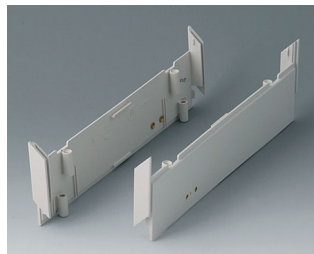
B2023005
Side trims 160, with ventilation
ABS
lagoon



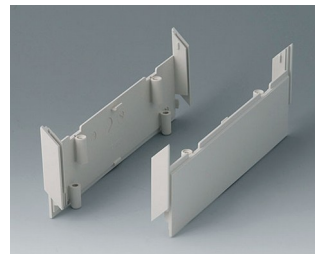
B2023007
Side trims 160, with ventilation
ABS (UL 94 HB)
off-white RAL 9002



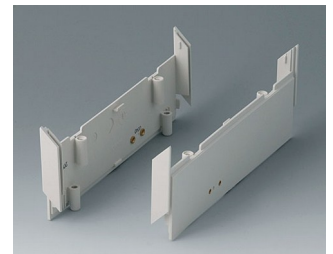
B2030007
Side panels 220, without holes
ABS (UL 94 HB)
off-white RAL 9002



B2030107
Side panels 220, with holes for handle
ABS (UL 94 HB)
off-white RAL 9002



B2031007
Side panels 160, without holes
ABS (UL 94 HB)
off-white RAL 9002



B2031107
Side panels 160, with holes for handle
ABS (UL 94 HB)
off-white RAL 9002



B2116507
Handle bar E
PA 6
off-white RAL 9002



B2129507
Handle bar D
PA 6
off-white RAL 9002



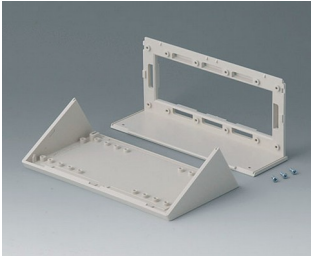
B2133012
Wall mounting brackets
PA 6
volcano



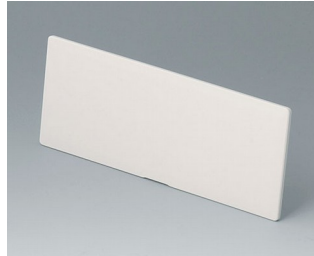
B2135017
Connectors
ABS (UL 94 HB)
off-white RAL 9002

MEDITEC

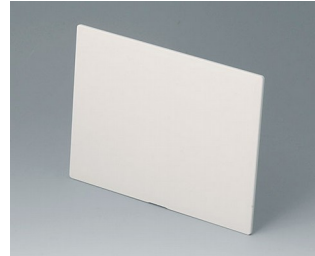
Accessory to complete



B2116007
Sloping control panel E
ABS (UL 94 HB)
off-white RAL 9002



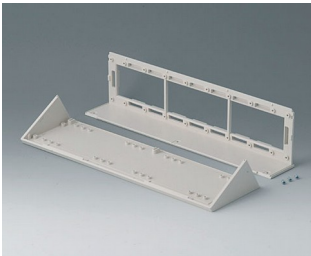
B2116307
Front / rear panel E, flat
ABS (UL 94 HB)
off-white RAL 9002
141.6x55.6x3mm



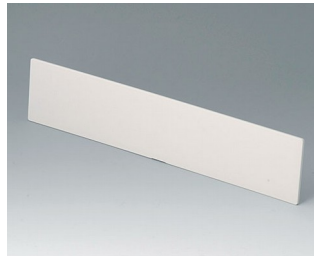
B2116407
Front / rear panel Z1
ABS (UL 94 HB)
off-white RAL 9002
141.6x105.6x3mm



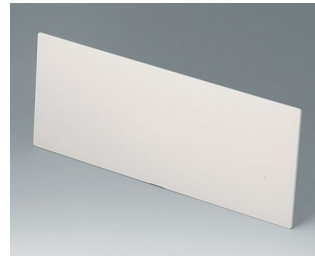
B2116707
Infill panel E
ABS (UL 94 HB)
off-white RAL 9002
142x55x5mm



B2129007
Sloping control panel D
ABS (UL 94 HB)
off-white RAL 9002



B2129307
Front / rear panel D, flat
ABS (UL 94 HB)
off-white RAL 9002
271.6x55.6x3mm

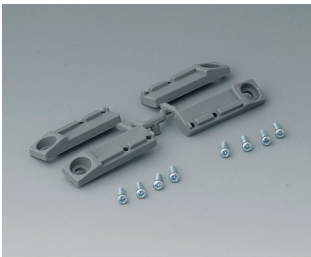


B2129407
Front / rear panel Z1
ABS (UL 94 HB)
off-white RAL 9002
271.6x105.6x3mm



B2129707
Infill panel D
ABS (UL 94 HB)
off-white RAL 9002
272x55x5mm

Accessory "wall/holder"



B2133012
Wall mounting brackets
PA 6
volcano



B2134012
Stacking elements
PA 6
volcano

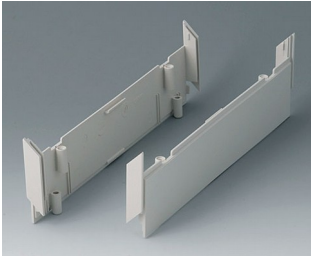
Accessory "screws"



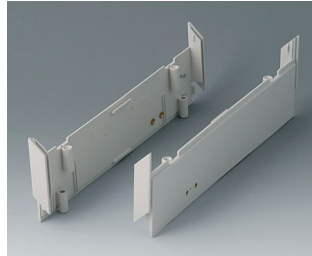
A9199008
Set of screws

MEDITEC

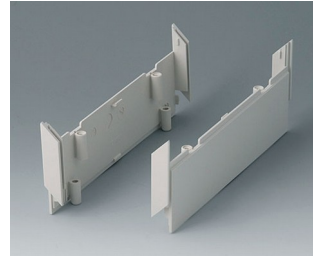
Accessory



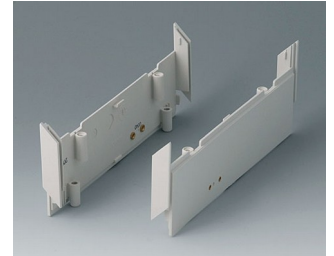
B2030007
Side panels 220, without holes
ABS (UL 94 HB)
off-white RAL 9002



B2030107
Side panels 220, with holes for
handle
ABS (UL 94 HB)
off-white RAL 9002



B2031007
Side panels 160, without holes
ABS (UL 94 HB)
off-white RAL 9002



B2031107
Side panels 160, with holes for
handle
ABS (UL 94 HB)
off-white RAL 9002



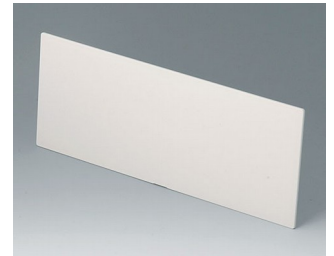
B2116407
Front / rear panel Z1
ABS (UL 94 HB)
off-white RAL 9002
141.6x105.6x3mm



B2116507
Handle bar E
PA 6
off-white RAL 9002



B2116707
Infill panel E
ABS (UL 94 HB)
off-white RAL 9002
142x55x5mm



B2129407
Front / rear panel Z1
ABS (UL 94 HB)
off-white RAL 9002
271.6x105.6x3mm



B2129507
Handle bar D
PA 6
off-white RAL 9002



B2129707
Infill panel D
ABS (UL 94 HB)
off-white RAL 9002
272x55x5mm



B2134012
Stacking elements
PA 6
volcano



B2135017
Connectors
ABS (UL 94 HB)
off-white RAL 9002

Subject to technical modification without notice. © by OKW Gehäusesysteme, Buchen/Germany.