

EURO CASE

Large instrument enclosures

Our EURO CASE is smart, tough and very easy to assemble. The case shells, side and snap-in panels all have a strong clip together mechanism which does not require screws.

- plastic enclosures for desktop or portable electronic instruments
- plenty of space for operating elements and interfaces
- two standard widths: 42 TE & 63 TE
- four heights: 1 HE, 2 HE, 3 HE, 6 HE; side panels in three sizes (0.5 HE, 1 HE and 2 HE)
- additional side panels can be configured to allow for larger case heights i.e. for several assemblies to be stacked together in one unit
- injection-moulded reinforcing ribs ensure that these conveniently light cases have a high degree of torsional resistance and rigidity
- ergonomic operation when using the tilt feet, or the robust carry handle bar which is also designed for portable use.
- problems in cooling can be addressed by the snap-in panels with integrated ventilation slots
- robust clip-together assembly
- minimum amount of assembly required thanks to the special OKW snap-lock mechanism
- aluminium front panels ordered separately, simply slide-in
- customize the EURO CASE to your own corporate design, e.g. by selecting the side panels and snap-in panels in your company's colours
- protection class < IP 40
- internal screw pillars for PCBs etc.
- four non-slip case feet included



EURO CASE

Applications and Examples

- Measuring and control technology
- Peripheral devices
- Laboratory equipment
- Medical and wellness devices



Light therapy device

Customising Options

What do you still need for your own very personal product? We can supply enclosures and tuning knobs with all necessary modifications for fitting your electronic components.

Customising options for Euro Case



Machining



Lacquering



Printing



Laser marking



Special material



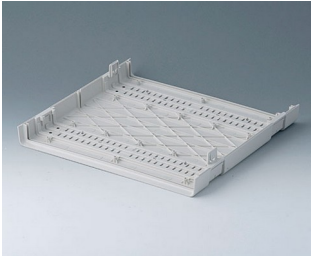
EMC shielding



Installation / Assembly
of accessories

EURO CASE

Select Versions



A0114170
 Shell 42 TE
 ABS (UL 94 HB)
 off-white RAL 9002
 260x250x27mm



A0116170
 Shell 63 TE
 ABS (UL 94 HB)
 off-white RAL 9002
 367x250x27mm



A0214070
 EURO CASE 42 TE, without
 handle
 ABS (UL 94 HB)
 off-white RAL 9002
 260x250x54mm



A0214170
 EURO CASE 42 TE, without
 handle
 ABS (UL 94 HB)
 off-white RAL 9002
 260x250x54mm



A0214270
 EURO CASE 42 TE, without
 handle
 ABS (UL 94 HB)
 off-white RAL 9002
 260x250x54mm



A0216070
 EURO CASE 63 TE, without
 handle
 ABS (UL 94 HB)
 off-white RAL 9002
 367x250x54mm



A0216170
 EURO CASE 63 TE, without
 handle
 ABS (UL 94 HB)
 off-white RAL 9002
 367x250x54mm



A0216270
 EURO CASE 63 TE, without
 handle
 ABS (UL 94 HB)
 off-white RAL 9002
 367x250x54mm



A0224070
 EURO CASE 42 TE, without
 handle
 ABS (UL 94 HB)
 off-white RAL 9002
 260x250x98.5mm



A0224170
 EURO CASE 42 TE, without
 handle
 ABS (UL 94 HB)
 off-white RAL 9002
 260x250x98.5mm



A0224270
 EURO CASE 42 TE, without
 handle
 ABS (UL 94 HB)
 off-white RAL 9002
 260x250x98.5mm



A0224470
 EURO CASE 42 TE, with handle
 ABS (UL 94 HB)
 off-white RAL 9002
 260x250x98.5mm

EURO CASE



A0224570
EURO CASE 42 TE, with handle
ABS (UL 94 HB)
off-white RAL 9002
260x250x98.5mm



A0224670
EURO CASE 42 TE, with handle
ABS (UL 94 HB)
off-white RAL 9002
260x250x98.5mm



A0226070
EURO CASE 63 TE, without
handle
ABS (UL 94 HB)
off-white RAL 9002
367x250x98.5mm



A0226170
EURO CASE 63 TE, without
handle
ABS (UL 94 HB)
off-white RAL 9002
367x250x98.5mm



A0226270
EURO CASE 63 TE, without
handle
ABS (UL 94 HB)
off-white RAL 9002
367x250x98.5mm



A0226470
EURO CASE 63 TE, with handle
ABS (UL 94 HB)
off-white RAL 9002
367x250x98.5mm



A0226570
EURO CASE 63 TE, with handle
ABS (UL 94 HB)
off-white RAL 9002
367x250x98.5mm



A0226670
EURO CASE 63 TE, with handle
ABS (UL 94 HB)
off-white RAL 9002
367x250x98.5mm



A0234070
EURO CASE 42 TE, without
handle
ABS (UL 94 HB)
off-white RAL 9002
260x250x143mm



A0234170
EURO CASE 42 TE, without
handle
ABS (UL 94 HB)
off-white RAL 9002
260x250x143mm



A0234270
EURO CASE 42 TE, without
handle
ABS (UL 94 HB)
off-white RAL 9002
260x250x143mm



A0234470
EURO CASE 42 TE, with handle
ABS (UL 94 HB)
off-white RAL 9002
260x250x143mm



A0234570
EURO CASE 42 TE, with handle
ABS (UL 94 HB)
off-white RAL 9002
260x250x143mm



A0234670
EURO CASE 42 TE, with handle
ABS (UL 94 HB)
off-white RAL 9002
260x250x143mm



A0236070
EURO CASE 63 TE, without
handle
ABS (UL 94 HB)
off-white RAL 9002
367x250x143mm



A0236170
EURO CASE 63 TE, without
handle
ABS (UL 94 HB)
off-white RAL 9002
367x250x143mm

EURO CASE



A0236270
 EURO CASE 63 TE, without handle
 ABS (UL 94 HB)
 off-white RAL 9002
 367x250x143mm



A0236470
 EURO CASE 63 TE, with handle
 ABS (UL 94 HB)
 off-white RAL 9002
 367x250x143mm



A0236570
 EURO CASE 63 TE, with handle
 ABS (UL 94 HB)
 off-white RAL 9002
 367x250x143mm



A0236670
 EURO CASE 63 TE, with handle
 ABS (UL 94 HB)
 off-white RAL 9002
 367x250x143mm



A0266070
 EURO CASE 63 TE, without handle
 ABS (UL 94 HB)
 off-white RAL 9002
 367x250x276.5mm

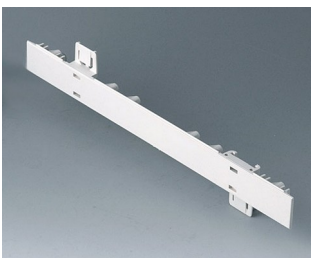


A0266170
 EURO CASE 63 TE, without handle
 ABS (UL 94 HB)
 off-white RAL 9002
 367x250x276.5mm

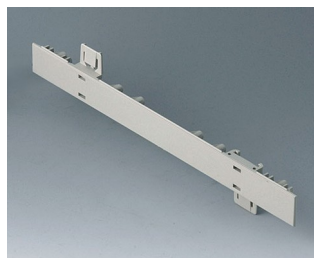


A0266270
 EURO CASE 63 TE, without handle
 ABS (UL 94 HB)
 off-white RAL 9002
 367x250x276.5mm

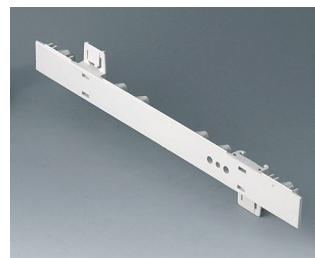
System components to complete



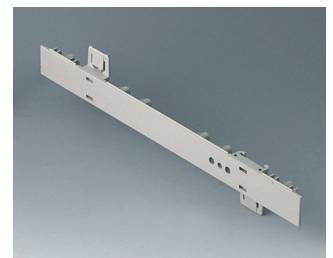
A0105270
 Side panel 0.5 HE
 ABS (UL 94 HB)
 off-white RAL 9002
 250x22.25mm



A0105280
 Side panel 0.5 HE
 ABS (UL 94 HB)
 pebble grey RAL 7032
 250x22.25mm

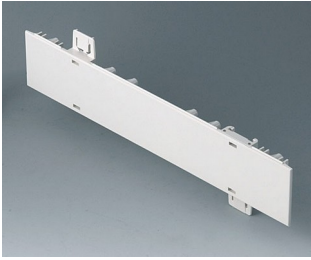


A0106270
 Side panel 0.5 HE, for handle mounting
 ABS (UL 94 HB)
 off-white RAL 9002
 250x22.25mm

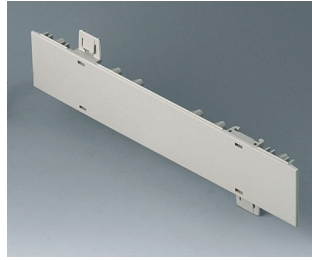


A0106280
 Side panel 0.5 HE, for handle mounting
 ABS (UL 94 HB)
 pebble grey RAL 7032
 250x22.25mm

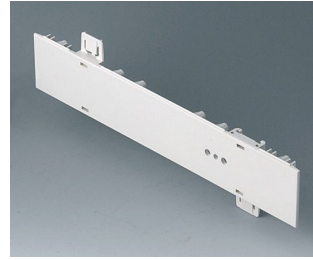
EURO CASE



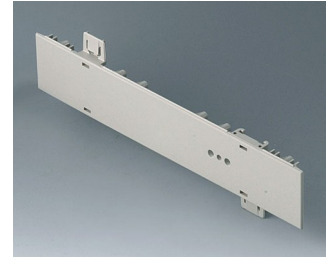
A0110270
Side panel 1 HE
ABS (UL 94 HB)
off-white RAL 9002
250x44.45mm



A0110280
Side panel 1 HE
ABS (UL 94 HB)
pebble grey RAL 7032
250x44.45mm



A0111270
Side panel 1 HE, for handle
mounting
ABS (UL 94 HB)
off-white RAL 9002
250x44.45mm



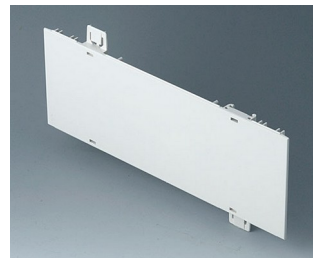
A0111280
Side panel 1 HE, for handle
mounting
ABS (UL 94 HB)
pebble grey RAL 7032
250x44.45mm



A0114370
Snap-in panel, without slots
ABS (UL 94 HB)
off-white RAL 9002



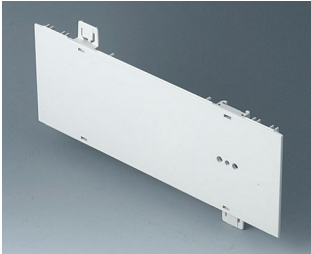
A0116370
Snap-in panel, without slots
ABS (UL 94 HB)
off-white RAL 9002



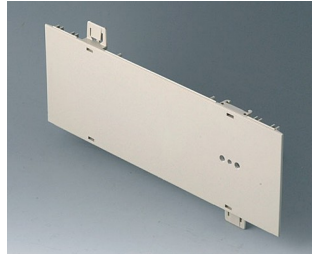
A0120270
Side panel 2 HE
ABS (UL 94 HB)
off-white RAL 9002
250x88.9mm



A0120280
Side panel 2 HE
ABS (UL 94 HB)
pebble grey RAL 7032
250x88.9mm



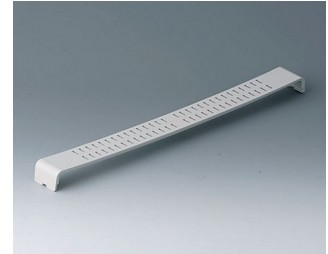
A0121270
Side panel 2 HE, for handle
mounting
ABS (UL 94 HB)
off-white RAL 9002
250x88.9mm



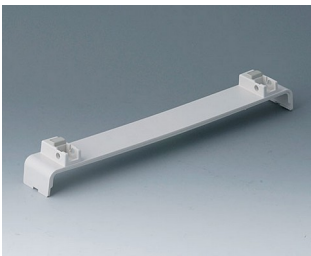
A0121280
Side panel 2 HE, for handle
mounting
ABS (UL 94 HB)
pebble grey RAL 7032
250x88.9mm



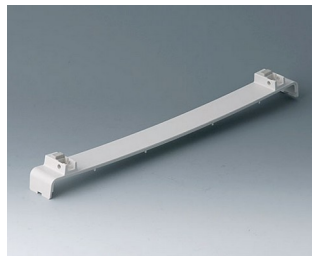
A0124370
Snap-in panel, with slots
ABS (UL 94 HB)
off-white RAL 9002



A0126370
Snap-in panel, with slots
ABS (UL 94 HB)
off-white RAL 9002



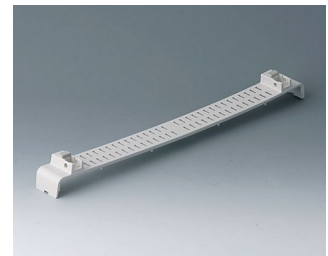
A0134370
Snap-in panel, without slots, with
feet
ABS (UL 94 HB)
off-white RAL 9002



A0136370
Snap-in panel, without slots, with
feet
ABS (UL 94 HB)
off-white RAL 9002



A0144370
Snap-in panel with, slots, with
feet
ABS (UL 94 HB)
off-white RAL 9002



A0146370
Snap-in panel, with slots, with
feet
ABS (UL 94 HB)
off-white RAL 9002

EURO CASE



A0344216
Handle 42 TE
PA 6
off-white RAL 9002



A0344217
Handle 42 TE
PA 6
off-white RAL 9002



A0344218
Handle 42 TE
PA 6
pebble grey RAL 7032



A0346316
Handle 63 TE
PA 6
off-white RAL 9002

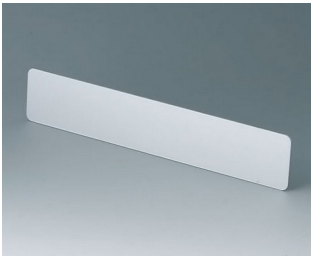


A0346317
Handle 63 TE
PA 6
off-white RAL 9002



A0346318
Handle 63 TE
PA 6
pebble grey RAL 7032

Accessory to complete



A0314270
Front / rear panel 42 TE 1 HE
Aluminium
matt anodised
250.8x46.3x2mm



A0316370
Front / rear panel 63 TE 1 HE
Aluminium
matt anodised
357.8x46.3x2mm



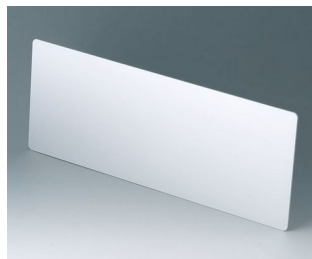
A0324270
Front / rear panel 42 TE 2 HE
Aluminium
matt anodised
250.8x90.7x2mm



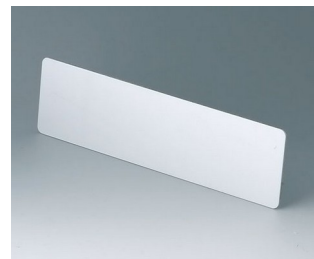
A0326370
Front / rear panel 63 TE 2 HE
Aluminium
matt anodised
357.8x90.7x2mm



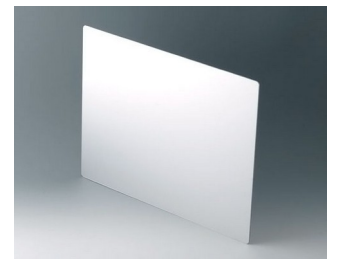
A0334270
Front / rear panel 42 TE 3 HE
Aluminium
matt anodised
250.8x135.2x2mm



A0336370
Front / rear panel 63 TE 3 HE
Aluminium
matt anodised
357.8x135.2x2mm



A0354270
Front / rear panel 42 TE 1.5 HE
Aluminium
matt anodised
250.8x68.5x2mm



A0366370
Front / rear panel 63 TE 6 HE
Aluminium
matt anodised
268.6x357.8x2mm

EURO CASE

Accessory "screws"



A0306031
Self-tapping screws 3 x 6 mm
(PZ1)



A0308031
Self-tapping screws 3 x 8 mm
(PZ1)



A0308132
Self-tapping screw 3 x 8 mm
(T10)
Stainless steel

Accessory



A0350007
Tilt foot
ABS (UL 94 HB)
off-white RAL 9002

Subject to technical modification without notice. © by OKW Gehäusesysteme, Buchen/Germany.