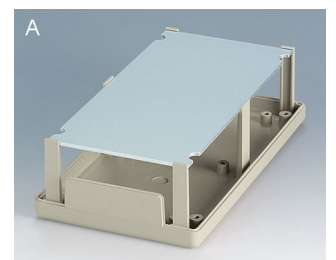
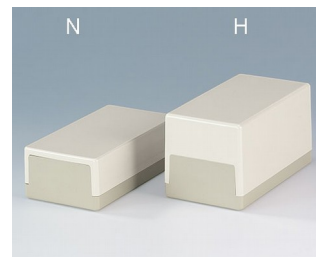
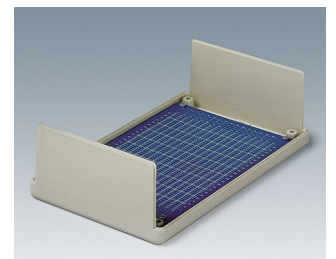
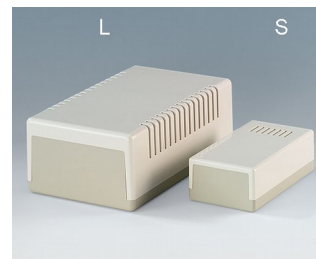
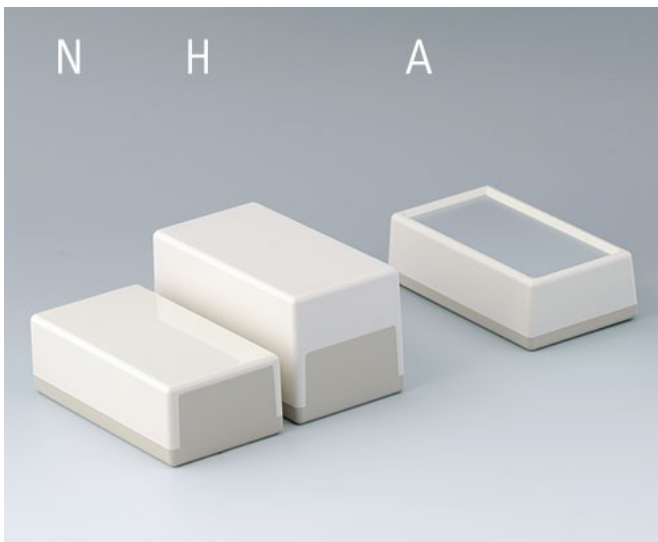


# FLAT-PACK CASE

## Multi-purpose plastic enclosures

Our FLAT-PACK CASES offer simple and low-priced enclosures for your electronics.

- large range of sizes and versions for table-top and wall mounting
- robust construction with tongue & groove design
- the bottom parts are open at the sides and are thus particularly useful for all installation and service work
- with low (N) and high (H) top part
- versions with handle bar for ergonomic operation or easy carrying
- with ventilation slots for components dissipating high heat (189 L)
- with slots on the top for miniature appliances with sound signal (120 S)
- type A models with aluminum front panels; operating elements are protected by a raised edge on the case
- protection class IP 40 (version without slots)
- internal screw pillars for PCBs etc.



# FLAT-PACK CASE

## Applications and Examples

Universal enclosures for electronic and electrotechnical devices, e.g.

- measuring and control instruments
- medical
- wellness and laboratory equipment
- and computer peripherals etc.



Suppressed electronic power controller

## Customising Options

What do you still need for your own very personal product? We can supply enclosures and tuning knobs with all necessary modifications for fitting your electronic components.

Customising options for Flat-Pack Case



Machining



Lacquering



Printing



Laser marking



Special material



Installation / Assembly  
of accessories

# FLAT-PACK CASE

## Select Versions



**A9010065**  
 FLAT-PACK CASES 100 N,  
 Vers. I  
 ABS (UL 94 HB)  
 off-white RAL 9002  
 100x50x25mm  
 IP 40



**A9011065**  
 FLAT-PACK CASES 100 H,  
 Vers. I  
 ABS (UL 94 HB)  
 off-white RAL 9002  
 100x50x40mm  
 IP 40



**A9020065**  
 FLAT-PACK CASES 120 N,  
 Vers. I  
 ABS (UL 94 HB)  
 off-white RAL 9002  
 120x65x40mm  
 IP 40



**A9020265**  
 FLAT-PACK CASE 120 S  
 ABS (UL 94 HB)  
 off-white RAL 9002  
 120x65x40mm



**A9021065**  
 FLAT-PACK CASE 120 H, Vers. I  
 ABS (UL 94 HB)  
 off-white RAL 9002  
 120x65x65mm  
 IP 40



**A9030065**  
 FLAT-PACK CASES 150 N,  
 Vers. I  
 ABS (UL 94 HB)  
 off-white RAL 9002  
 150x80x50mm  
 IP 40



**A9030165**  
 FLAT-PACK CASES 150 N,  
 Vers. II  
 ABS (UL 94 HB)  
 off-white RAL 9002  
 150x80x50mm  
 IP 40



**A9031065**  
 FLAT-PACK CASE 150 H, Vers. I  
 ABS (UL 94 HB)  
 off-white RAL 9002  
 150x80x80mm  
 IP 40



**A9032065**  
 FLAT-PACK CASES 150 N,  
 Vers. I  
 ABS (UL 94 HB)  
 off-white RAL 9002  
 150x80x55mm  
 IP 40



**A9040065**  
 FLAT-PACK CASES 189 N,  
 Vers. I  
 ABS (UL 94 HB)  
 off-white RAL 9002  
 189x110x60mm  
 IP 40



**A9040165**  
 FLAT-PACK CASES 189 N,  
 Vers. II  
 ABS (UL 94 HB)  
 off-white RAL 9002  
 189x110x60mm  
 IP 40



**A9041065**  
 FLAT-PACK CASE 189 H, Vers. I  
 ABS (UL 94 HB)  
 off-white RAL 9002  
 189x110x97mm  
 IP 40

# FLAT-PACK CASE



**A9041165**  
FLAT-PACK CASE 189 H, Vers. II  
ABS (UL 94 HB)  
off-white RAL 9002  
189x110x97mm  
IP 40



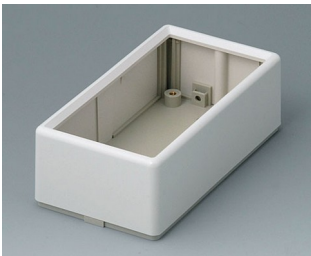
**A9042065**  
FLAT-PACK CASE 189 H, Vers. I  
ABS (UL 94 HB)  
off-white RAL 9002  
189x110x120mm  
IP 40



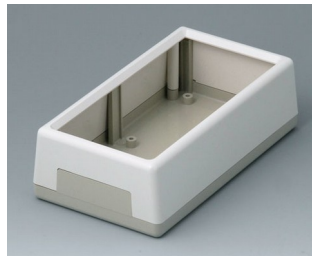
**A9043065**  
FLAT-PACK CASES 189 N,  
Vers. I  
ABS (UL 94 HB)  
off-white RAL 9002  
189x110x70mm  
IP 40



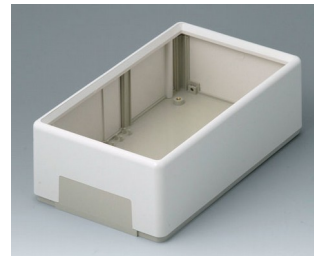
**A9043265**  
FLAT-PACK CASE 189 L  
ABS (UL 94 HB)  
off-white RAL 9002  
189x110x70mm



**A9520165**  
FLAT-PACK CASE 120 A  
ABS (UL 94 HB)  
off-white RAL 9002  
120x65x40mm  
IP 40

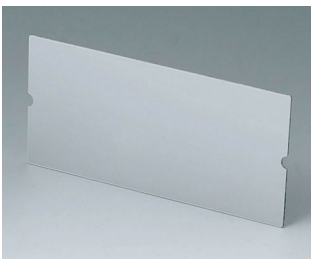


**A9530165**  
FLAT-PACK CASE 150 A  
ABS (UL 94 HB)  
off-white RAL 9002  
150x85x45mm  
IP 40

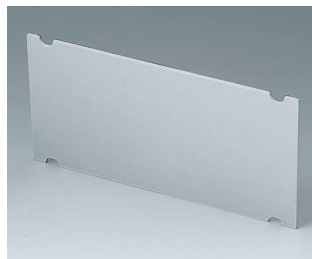


**A9540165**  
FLAT-PACK CASE 210 A  
ABS (UL 94 HB)  
off-white RAL 9002  
210x125x70mm  
IP 40

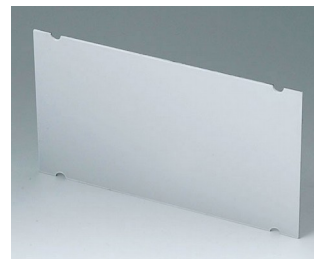
## Accessory to complete



**A9195201**  
Front panel 120 A  
Aluminium  
matt anodised  
113x58x1mm



**A9195301**  
Front panel 150 A  
Aluminium  
matt anodised  
141.8x71.6x1.5mm



**A9195401**  
Front panel 210 A  
Aluminium  
matt anodised  
201x116x1.5mm

# FLAT-PACK CASE

## Accessory "wall/holder"



**A9100008**  
Snap-lock  
PA 6 (UL 94 HB)  
natural-coloured



**A9120000**  
Assembly kit for wall mounting



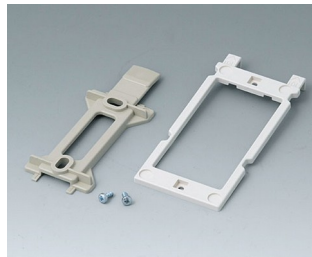
**A9130000**  
Assembly kit for wall mounting



**A9132000**  
Assembly kit for wall mounting



**A9140000**  
Assembly kit for wall mounting



**B1350048**  
Wall suspension elements  
ABS (UL 94 HB)  
pebble grey RAL 7032



**B1360048**  
Wall suspension elements  
ABS (UL 94 HB)  
pebble grey RAL 7032

## Accessory "carrying"



**A9172107**  
Belt/Pocket clip  
ABS (UL 94 HB)  
off-white RAL 9002  
62x30mm

## Accessory "screws"



**A0306031**  
Self-tapping screws 3 x 6 mm  
(PZ1)



**A0308031**  
Self-tapping screws 3 x 8 mm  
(PZ1)



**A0308132**  
Self-tapping screw 3 x 8 mm  
(T10)  
Stainless steel

# FLAT-PACK CASE

## Accessory



**A9100008**  
Snap-lock  
PA 6 (UL 94 HB)  
natural-coloured



**A9207150**  
Anti-slide feet 6.5 x 2 mm  
transparent



**A9210290**  
Anti-slide feet 9.5 x 3.8 mm  
transparent



**A9250807**  
Tilt foot bar  
ABS (UL 94 HB)  
off-white RAL 9002



**A9250817**  
Tilt foot bar  
ABS (UL 94 HB)  
off-white RAL 9002

Subject to technical modification without notice. © by OKW Gehäusesysteme, Buchen/Germany.