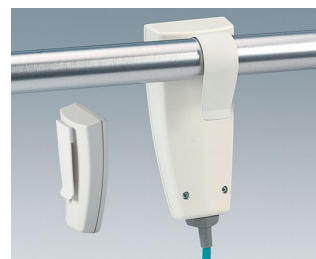
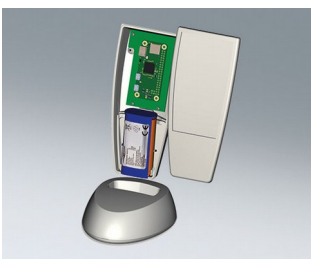
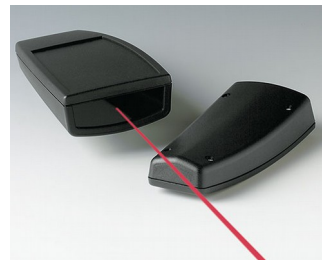


SMART-CASE

Caja de mano para un buen agarre

La idea de hacer más hincapié en los requisitos ergonómicos fue el punto de partida para el desarrollo de la serie de cajas de mano SMART-CASE.

- Diseño ergonómico para un máximo confort en el uso.
- Ideal para mandos a distancia cableados o a pilas: AAA, AA, 9 V ó 12 V.
- Versión con pasacables integrado (tamaños M, L y XL).
- Panel de control rebajado para proteger el teclado de membrana o la lámina decorativa.
- ABS (UL 94 HB), opcionalmente en PMMA (plexiglás) permeable a los infrarrojos.
- Categoría de protección hasta IP 65: tamaños L y XL con junta de sellado opcional y sin compartimento para pilas
- Práctico clip de sujeción y soporte para guardarlo de forma segura disponible como accesorio.
- Base M, L y XL para aplicaciones de sobremesa.
- Cabezales o bases de fijación para placas de circuito impreso y piezas de montaje.
- 4 tamaños.



SMART-CASE

Ejemplos de aplicación

- Mandos a distancia de diversos tipos, con o sin cables
- Se usa especialmente en los ámbitos social y sanitario, así como en los hogares y la industria



BIOFIT test unit for eye frequency



Chlorophyll fluorimeter for plant screening



Controlling treatment beds



Infrared hand transmitter for suncreening curtains



Laser distance measuring device



Leak locator



Nurse presence and staff alert



Remote trainer for dog training



Sleep screening system



System for digital respiratory sound analysis



System for leak detection in leisure vehicles

Modificaciones específicas del cliente

¿Qué necesita en su producto personalizado? En caso necesario, le suministramos las cajas y botones giratorios listas para el montaje con todas las modificaciones y acabados precisos.
Opciones de productos para Smart-Case

SMART-CASE



Mecanizado



Lacado



Impresión



Inscripción láser



Láminas decorativas



Materiales especiales



Compatibilidad
electromagnética



Confección y montaje

Versiones



A9064107
SMART-CASE XS
ABS (UL 94 HB)
off-white RAL 9002
58x35,6x19mm
IP 40



A9064109
SMART-CASE XS
ABS (UL 94 HB)
black RAL 9005
58x35,6x19mm
IP 40



A9064209
SMART-CASE XS
PMMA (IR) (UL 94 HB)
black RAL 9005
58x35,6x19mm
IP 40



A9066107
SMART-CASE M, Vers. I
ABS (UL 94 HB)
off-white RAL 9002
96x47x24mm
IP 40



A9066109
SMART-CASE M, Vers. I
ABS (UL 94 HB)
black RAL 9005
96x47x24mm
IP 40



A9066117
SMART-CASE M, Vers. II
ABS (UL 94 HB)
off-white RAL 9002
96x47x24mm
IP 40



A9066119
SMART-CASE M, Vers. II
ABS (UL 94 HB)
black RAL 9005
96x47x24mm
IP 40



A9066127
SMART-CASE M, Vers. III
ABS (UL 94 HB)
off-white RAL 9002
96x47x24mm
IP 40

SMART-CASE



A9066129
SMART-CASE M, Vers. III
ABS (UL 94 HB)
black RAL 9005
96x47x24mm
IP 40



A9066137
SMART-CASE M, Vers. IV
ABS (UL 94 HB)
off-white RAL 9002
96x47x24mm
IP 40



A9066139
SMART-CASE M, Vers. IV
ABS (UL 94 HB)
black RAL 9005
96x47x24mm
IP 40



A9066147
SMART-CASE M, Vers. V
ABS (UL 94 HB)
off-white RAL 9002
96x47x24mm
IP 40



A9066149
SMART-CASE M, Vers. V
ABS (UL 94 HB)
black RAL 9005
96x47x24mm
IP 40



A9066209
SMART CASE M, Vers. I
PMMA (IR) (UL 94 HB)
black RAL 9005
96x47x24mm
IP 40



A9066219
SMART-CASE M, Vers. II
PMMA (IR) (UL 94 HB)
black RAL 9005
96x47x24mm
IP 40



A9066317
SMART-CASE M, Vers. VI
ABS (UL 94 HB)
off-white RAL 9002
96x47x24mm
IP 40



A9066319
SMART-CASE M, Vers. VI
ABS (UL 94 HB)
black RAL 9005
96x47x24mm
IP 40



A9066329
SMART-CASE M, Vers. III
ABS (UL 94 HB)
black RAL 9005
96x47x24mm
IP 40



A9066339
SMART-CASE M, Vers. IV
ABS (UL 94 HB)
black RAL 9005
96x47x24mm
IP 40



A9066349
SMART-CASE M, Vers. V
ABS (UL 94 HB)
black RAL 9005
96x47x24mm
IP 40



A9066419
SMART-CASE M, Vers. VI
PMMA (IR) (UL 94 HB)
black RAL 9005
96x47x24mm
IP 40



A9067107
SMART-CASE L, Vers. I
ABS (UL 94 HB)
off-white RAL 9002
140x62,7x30,5mm
IP 40



A9067109
SMART-CASE L, Vers. I
ABS (UL 94 HB)
black RAL 9005
140x62,7x30,5mm
IP 40



A9067117
SMART-CASE L, Vers. II
ABS (UL 94 HB)
off-white RAL 9002
140x62,7x30,5mm
IP 65 opt., IP 40

SMART-CASE



A9067119
SMART-CASE L, Vers. II
ABS (UL 94 HB)
black RAL 9005
140x62,7x30,5mm
IP 65 opt., IP 40



A9067127
SMART-CASE L, Vers. III
ABS (UL 94 HB)
off-white RAL 9002
140x62,7x30,5mm
IP 65 opt., IP 40



A9067129
SMART-CASE L, Vers. III
ABS (UL 94 HB)
black RAL 9005
140x62,7x30,5mm
IP 65 opt., IP 40



A9067137
SMART-CASE L, Vers. IV
ABS (UL 94 HB)
off-white RAL 9002
140x62,7x30,5mm
IP 65 opt., IP 40



A9067139
SMART-CASE L, Vers. IV
ABS (UL 94 HB)
black RAL 9005
140x62,7x30,5mm
IP 65 opt., IP 40



A9067147
SMART-CASE L, Vers. V
ABS (UL 94 HB)
off-white RAL 9002
140x62,7x30,5mm
IP 65 opt., IP 40



A9067149
SMART-CASE L, Vers. V
ABS (UL 94 HB)
black RAL 9005
140x62,7x30,5mm
IP 65 opt., IP 40



A9067209
SMART-CASE L, Vers. I
PMMA (IR) (UL 94 HB)
black RAL 9005
140x62,7x30,5mm
IP 40



A9067219
SMART-CASE L, Vers. II
PMMA (IR) (UL 94 HB)
black RAL 9005
140x62,7x30,5mm
IP 65 opt., IP 40



A9067329
SMART-CASE L, Vers. III
ABS (UL 94 HB)
black RAL 9005
140x62,7x30,5mm
IP 65 opt., IP 40



A9067339
SMART-CASE L, Vers. IV
ABS (UL 94 HB)
black RAL 9005
140x62,7x30,5mm
IP 65 opt., IP 40



A9067349
SMART-CASE L, Vers. V
ABS (UL 94 HB)
black RAL 9005
140x62,7x30,5mm
IP 65 opt., IP 40



A9068107
SMART-CASE XL, Vers. I
ABS (UL 94 HB)
off-white RAL 9002
168x74,4x35,4mm
IP 40



A9068109
SMART-CASE XL, Vers. I
ABS (UL 94 HB)
black RAL 9005
168x74,4x35,4mm
IP 40



A9068117
SMART-CASE XL, Vers. II
ABS (UL 94 HB)
off-white RAL 9002
168x74,4x35,4mm
IP 65 opt., IP 40



A9068119
SMART-CASE XL, Vers. II
ABS (UL 94 HB)
black RAL 9005
168x74,4x35,4mm
IP 65 opt., IP 40

SMART-CASE



A9068127
SMART-CASE XL, Vers. III
ABS (UL 94 HB)
off-white RAL 9002
168x74,4x35,4mm
IP 65 opt., IP 40



A9068129
SMART-CASE XL, Vers. III
ABS (UL 94 HB)
black RAL 9005
168x74,4x35,4mm
IP 65 opt., IP 40



A9068137
SMART-CASE XL, Vers. IV
ABS (UL 94 HB)
off-white RAL 9002
168x74,4x35,4mm
IP 65 opt., IP 40



A9068139
SMART-CASE XL, Vers. IV
ABS (UL 94 HB)
black RAL 9005
168x74,4x35,4mm
IP 65 opt., IP 40



A9068147
SMART-CASE XL, Vers. V
ABS (UL 94 HB)
off-white RAL 9002
168x74,4x35,4mm
IP 65 opt., IP 40



A9068149
SMART-CASE XL, Vers. V
ABS (UL 94 HB)
black RAL 9005
168x74,4x35,4mm
IP 65 opt., IP 40



A9068209
SMART-CASE XL, Vers. I
PMMA (IR) (UL 94 HB)
black RAL 9005
168x74,4x35,4mm
IP 40



A9068219
SMART-CASE XL, Vers. II
PMMA (IR) (UL 94 HB)
black RAL 9005
168x74,4x35,4mm
IP 65 opt., IP 40



A9068329
SMART-CASE XL, Vers. III
ABS (UL 94 HB)
black RAL 9005
168x74,4x35,4mm
IP 65 opt., IP 40

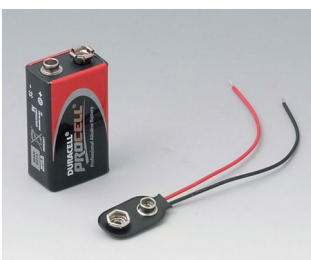


A9068339
SMART-CASE XL, Vers. IV
ABS (UL 94 HB)
black RAL 9005
168x74,4x35,4mm
IP 65 opt., IP 40



A9068349
SMART-CASE XL, Vers. V
ABS (UL 94 HB)
black RAL 9005
168x74,4x35,4mm
IP 65 opt., IP 40

Accessory "battery"



A9160003
Plug-in contact, 1 x 9 V (PP3)



A9166001
Set of battery clips, 2 x AAA
Steel
tin-plated



A9166002
Battery contact, 2 x AAA
Steel
tin-plated



A9166003
Battery holder, 2 x AAA
PA 6 (UL 94 HB)
black RAL 9005

SMART-CASE



A9190002
Set of battery clips,
2xN/2xAA/2xAAA
Steel
tin-plated



A9190003
Set of battery clips,
2xN/2xAA/2xAAA
Steel
nickel-plated

Accessory "station"



A9166004
Set of pull-relief
PA 6
volcano



A9166037
Station M
ABS (UL 94 HB)
off-white RAL 9002



A9166039
Station M
ABS (UL 94 HB)
black RAL 9005



A9167037
Station L
ABS (UL 94 HB)
off-white RAL 9002



A9167039
Station L
ABS (UL 94 HB)
black RAL 9005



A9168037
Station XL
ABS (UL 94 HB)
off-white RAL 9002



A9168039
Station XL
ABS (UL 94 HB)
black RAL 9005

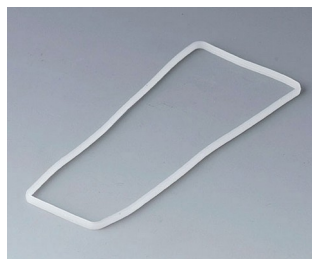


A9193032
Spring contact

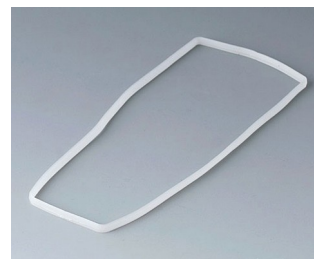
Accessory "protection"



A9166004
Set of pull-relief
PA 6
volcano



A9167002
Sealing L



A9168002
Sealing XL

SMART-CASE

Accessory "wall/holder"



A9166005
Adhesive foil M



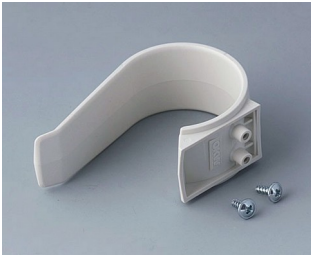
A9166307
Holder M
ABS (UL 94 HB)
off-white RAL 9002



A9166309
Holder M
ABS (UL 94 HB)
black RAL 9005



A9167005
Adhesive foil L



A9167027
Holding clamp
PA 6 (UL 94 HB)
off-white RAL 9002



A9167029
Holding clamp
PA 6 (UL 94 HB)
black RAL 9005



A9167307
Holder L
ABS (UL 94 HB)
off-white RAL 9002



A9167309
Holder L
ABS (UL 94 HB)
black RAL 9005



A9168005
Adhesive foil XL



A9168307
Holder XL
ABS (UL 94 HB)
off-white RAL 9002



A9168309
Holder XL
ABS (UL 94 HB)
black RAL 9005

Accessory "carrying"



A9100001
Ring eyelet
PA 6
volcano



A9100002
Ring eyelet
PA 6
volcano



A9164001
Key ring
Steel
nickel-plated
20,5mm



A9167017
Belt/pocket clip
PA 6 (UL 94 HB)
off-white RAL 9002

SMART-CASE



A9167019
Belt/pocket clip
PA 6 (UL 94 HB)
black RAL 9005



B9100063
Carrying strap, textile lanyard
black
860mm

Accessory "screws"



A0304031
Self-tapping screws 2.2 x 5 mm
(PZ1)

Accessory



A9193030
Contact pin
gold-plated

Nos reservamos el derecho a realizar modificaciones técnicas. © OKW Gehäusesysteme, Buchen (Alemania).