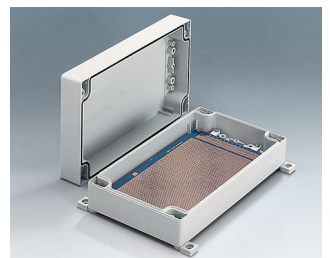
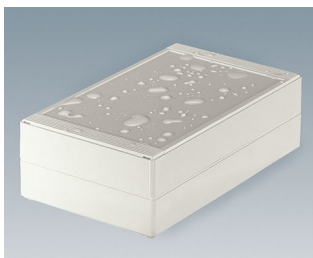
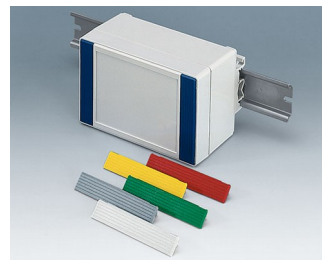
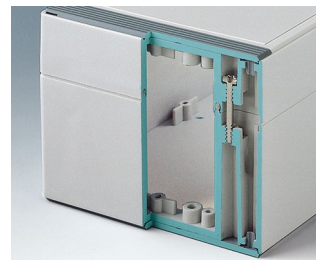
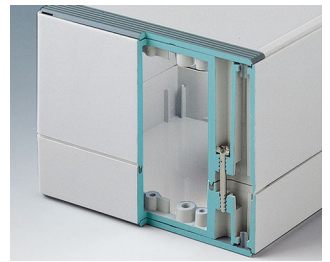


ROBUST-BOX

Cajas universales de categoría IP 66

Ambas partes de la ROBUST-BOX, están provistas de roscas premoldeadas. Como resultado, el usuario puede decidir si prefiere utilizar la parte plana o gruesa de la caja como parte inferior.

- Versátil, caja sellada con hasta 11 dimensiones básicas, diferentes alturas y 2 materiales estándar:
- ABS (UL 94 HB), aprobado como caja para montaje de bornes.
- PC (UL 94 HB), caja sólida y robusta para usos exigentes con elevada resistencia a la temperatura.
- Puede usarse como caja manual, de sobremesa o de pared, e incluso sobre raíles DIN (clips para carril DIN como accesorios).
- Fácil de montar; ambas partes de la caja se pueden utilizar como parte superior o inferior indistintamente.
- Ambas partes con panel de control rebajado para proteger el teclado de membrana, etc.
- Los anclajes de la tapa van fuera de la zona sellada; los tornillos de fijación son inoxidables y van anclados en la parte superior.
- Montaje directamente en la pared desde el interior o mediante escuadras de fijación externa.
- Tiras de colores para la codificación (alternativa a la versiones estándar de color gris claro)
- Cabezales de fijación para placas de circuitos impresos y piezas de montaje.
- Gran variedad de accesorios: pies, bisagra, elementos de sujeción para raíles DIN, soportes preensamblados para unidades PCB, etc.



ROBUST-BOX

Ejemplos de aplicación

- Instalaciones eléctricas, como en tecnologías de calefacción, climatización y ventilación, dispositivos de mando y de control, construcción de maquinaria e instalaciones y tecnologías de seguridad.
- También puede emplearse en el sector de la electrónica, como, por ejemplo, en carcasas para interruptores, sistemas de mando, sensores de interiores, etc.



Fill level measurement in process technology



Humidity and temperature measuring unit



Measuring, regulating and metering unit for water quality



Portable metal detector



Robust monitoring systems



Sensor for air pollution



Stationary gas detection system

Modificaciones específicas del cliente

¿Qué necesita en su producto personalizado? En caso necesario, le suministramos las cajas y botones giratorios listas para el montaje con todas las modificaciones y acabados precisos.

Opciones de productos para Robust-Box



Mecanizado



Lacado



Impresión



Inscripción láser



Láminas decorativas



Materiales especiales



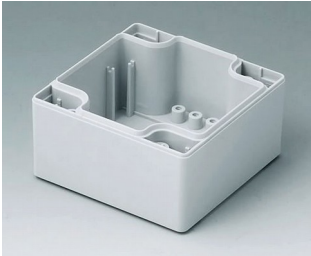
Compatibilidad electromagnética



Confeción y montaje

ROBUST-BOX

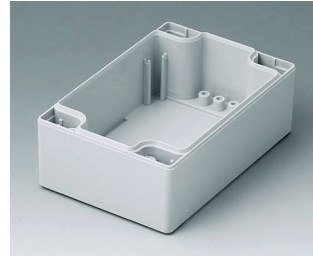
Versiones



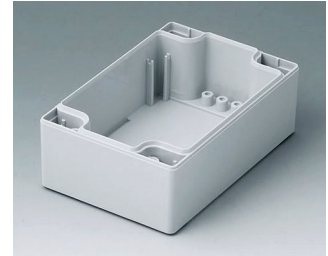
C1080801
Case shell 80, with tongue
ABS (UL 94 HB)
light grey RAL 7035
80x80x40mm



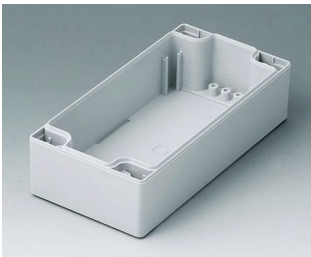
C1080802
Case shell 80, with tongue
PC (UL 94 HB)
light grey RAL 7035
80x80x40mm



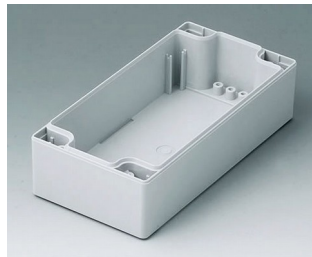
C1081201
Case shell 80, with tongue
ABS (UL 94 HB)
light grey RAL 7035
120x80x40mm



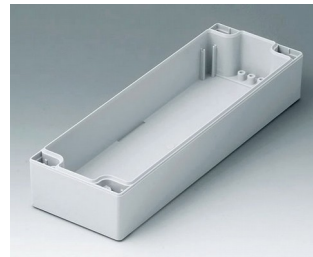
C1081202
Case shell 80, with tongue
PC (UL 94 HB)
light grey RAL 7035
120x80x40mm



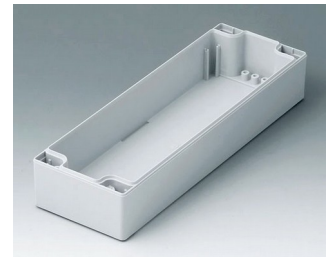
C1081601
Case shell 80, with tongue
ABS (UL 94 HB)
light grey RAL 7035
160x80x40mm



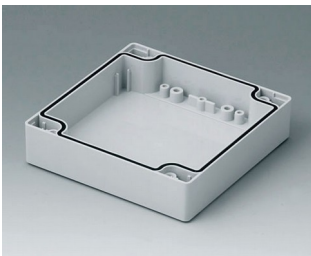
C1081602
Case shell 80, with tongue
PC (UL 94 HB)
light grey RAL 7035
160x80x40mm



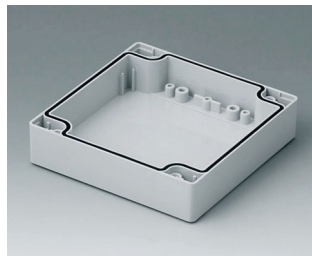
C1082401
Case shell 80, with tongue
ABS (UL 94 HB)
light grey RAL 7035
240x80x40mm



C1082402
Case shell 80, with tongue
PC (UL 94 HB)
light grey RAL 7035
240x80x40mm



C1121201
Case shell 120, with groove
ABS (UL 94 HB)
light grey RAL 7035
120x120x30mm



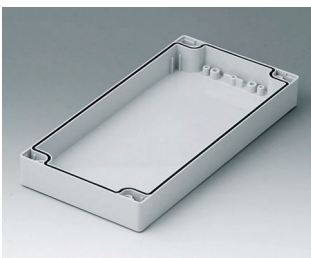
C1121202
Case shell 120, with groove
PC (UL 94 HB)
light grey RAL 7035
120x120x30mm



C1122001
Case shell 120, with groove
ABS (UL 94 HB)
light grey RAL 7035
200x120x30mm



C1122002
Case shell 120, with groove
PC (UL 94 HB)
light grey RAL 7035
200x120x30mm



C1122401
Case shell 120, with groove
ABS (UL 94 HB)
light grey RAL 7035
240x120x30mm



C1122402
Case shell 120, with groove
PC (UL 94 HB)
light grey RAL 7035
240x120x30mm



C1161601
Case shell 160, with groove
ABS (UL 94 HB)
light grey RAL 7035
160x160x30mm



C1161602
Case shell 160, with groove
PC (UL 94 HB)
light grey RAL 7035
160x160x30mm

ROBUST-BOX



C1162401
Case shell 160, with groove
ABS (UL 94 HB)
light grey RAL 7035
240x160x30mm



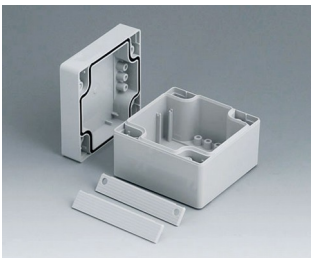
C1162402
Case shell 160, with groove
PC (UL 94 HB)
light grey RAL 7035
240x160x30mm



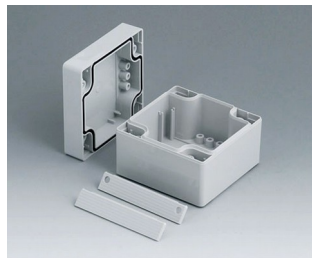
C1203001
Case shell 200, with tongue
ABS (UL 94 HB)
light grey RAL 7035
300x200x40mm



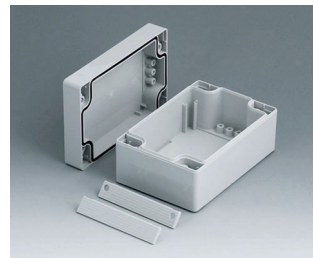
C1243601
Case shell 240, with tongue
ABS (UL 94 HB)
light grey RAL 7035
360x240x40mm



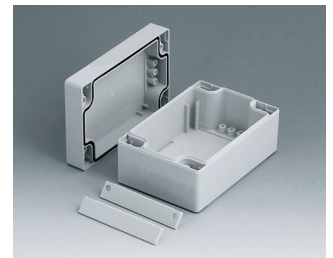
C2008081
ROBUST-BOX WIDTH 80, Vers.
I
ABS (UL 94 HB)
light grey RAL 7035
80x80x60mm
IP 66



C2008082
ROBUST-BOX WIDTH 80, Vers.
II
PC (UL 94 HB)
light grey RAL 7035
80x80x60mm
IP 66



C2008121
ROBUST-BOX WIDTH 80, Vers.
I
ABS (UL 94 HB)
light grey RAL 7035
120x80x60mm
IP 66



C2008122
ROBUST-BOX WIDTH 80, Vers.
II
PC (UL 94 HB)
light grey RAL 7035
120x80x60mm
IP 66



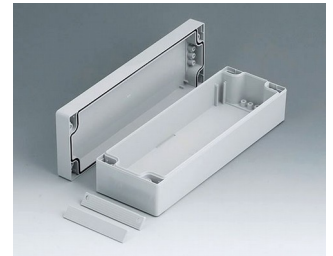
C2008161
ROBUST-BOX WIDTH 80, Vers.
I
ABS (UL 94 HB)
light grey RAL 7035
160x80x60mm
IP 66



C2008162
ROBUST-BOX WIDTH 80, Vers.
II
PC (UL 94 HB)
light grey RAL 7035
160x80x60mm
IP 66



C2008241
ROBUST-BOX WIDTH 80, Vers.
I
ABS (UL 94 HB)
light grey RAL 7035
240x80x60mm
IP 66



C2008242
ROBUST-BOX WIDTH 80, Vers.
II
PC (UL 94 HB)
light grey RAL 7035
240x80x60mm
IP 66



C2012121
ROBUST-BOX WIDTH 120,
Vers. I
ABS (UL 94 HB)
light grey RAL 7035
120x120x60mm
IP 66



C2012122
ROBUST-BOX WIDTH 120,
Vers. II
PC (UL 94 HB)
light grey RAL 7035
120x120x60mm
IP 66

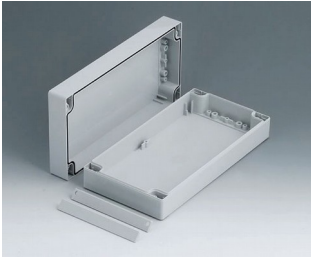


C2012201
ROBUST-BOX WIDTH 120,
Vers. I
ABS (UL 94 HB)
light grey RAL 7035
200x120x60mm
IP 66



C2012202
ROBUST-BOX WIDTH 120,
Vers. II
PC (UL 94 HB)
light grey RAL 7035
200x120x60mm
IP 66

ROBUST-BOX



C2012241
ROBUST-BOX WIDTH 120,
Vers. I
ABS (UL 94 HB)
light grey RAL 7035
240x120x60mm
IP 66



C2012242
ROBUST-BOX WIDTH 120,
Vers. II
PC (UL 94 HB)
light grey RAL 7035
240x120x60mm
IP 66



C2016161
ROBUST-BOX WIDTH 160,
Vers. I
ABS (UL 94 HB)
light grey RAL 7035
160x160x60mm
IP 66



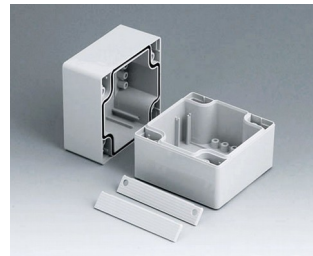
C2016162
ROBUST-BOX WIDTH 160,
Vers. II
PC (UL 94 HB)
light grey RAL 7035
160x160x60mm
IP 66



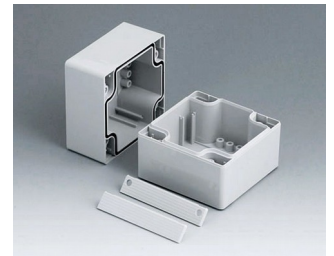
C2016241
ROBUST-BOX WIDTH 160,
Vers. I
ABS (UL 94 HB)
light grey RAL 7035
240x160x60mm
IP 66



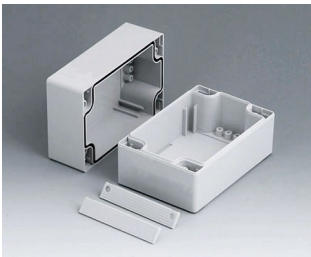
C2016242
ROBUST-BOX WIDTH 160,
Vers. II
PC (UL 94 HB)
light grey RAL 7035
240x160x60mm
IP 66



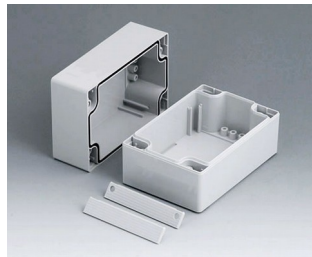
C2108081
ROBUST-BOX WIDTH 80, Vers.
I
ABS (UL 94 HB)
light grey RAL 7035
80x80x80mm
IP 66



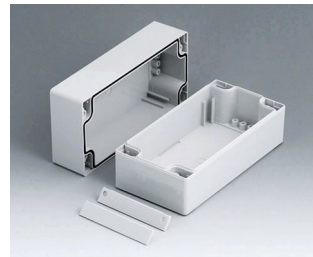
C2108082
ROBUST-BOX WIDTH 80, Vers.
II
PC (UL 94 HB)
light grey RAL 7035
80x80x80mm
IP 66



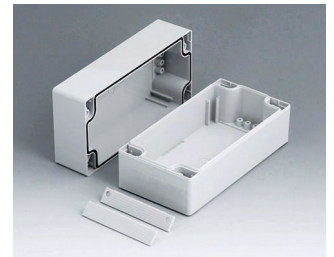
C2108121
ROBUST-BOX WIDTH 80, Vers.
I
ABS (UL 94 HB)
light grey RAL 7035
120x80x80mm
IP 66



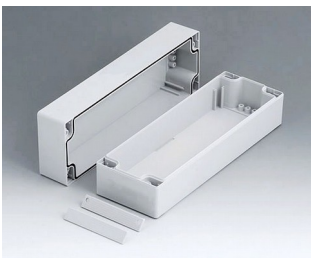
C2108122
ROBUST-BOX WIDTH 80, Vers.
II
PC (UL 94 HB)
light grey RAL 7035
120x80x80mm
IP 66



C2108161
ROBUST-BOX WIDTH 80, Vers.
I
ABS (UL 94 HB)
light grey RAL 7035
160x80x80mm
IP 66



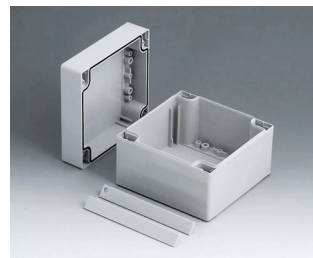
C2108162
ROBUST-BOX WIDTH 80, Vers.
II
PC (UL 94 HB)
light grey RAL 7035
160x80x80mm
IP 66



C2108241
ROBUST-BOX WIDTH 80, Vers.
I
ABS (UL 94 HB)
light grey RAL 7035
240x80x80mm
IP 66



C2108242
ROBUST-BOX WIDTH 80, Vers.
II
PC (UL 94 HB)
light grey RAL 7035
240x80x80mm
IP 66

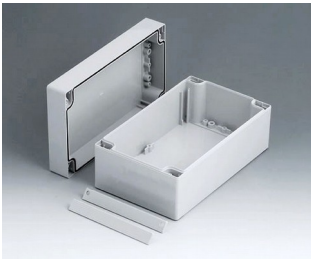


C2112121
ROBUST-BOX WIDTH 120,
Vers. I
ABS (UL 94 HB)
light grey RAL 7035
120x120x90mm
IP 66

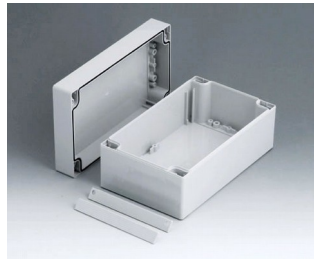


C2112122
ROBUST-BOX WIDTH 120,
Vers. II
PC (UL 94 HB)
light grey RAL 7035
120x120x90mm
IP 66

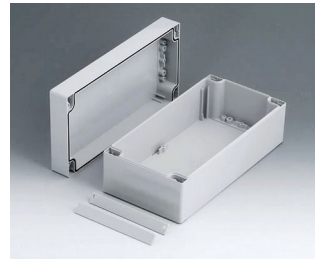
ROBUST-BOX



C2112201
 ROBUST-BOX WIDTH 120,
 Vers. I
 ABS (UL 94 HB)
 light grey RAL 7035
 200x120x90mm
 IP 66



C2112202
 ROBUST-BOX WIDTH 120,
 Vers. II
 PC (UL 94 HB)
 light grey RAL 7035
 200x120x90mm
 IP 66



C2112241
 ROBUST-BOX WIDTH 120,
 Vers. I
 ABS (UL 94 HB)
 light grey RAL 7035
 240x120x90mm
 IP 66



C2112242
 ROBUST-BOX WIDTH 120,
 Vers. II
 PC (UL 94 HB)
 light grey RAL 7035
 240x120x90mm
 IP 66



C2116161
 ROBUST-BOX WIDTH 160,
 Vers. I
 ABS (UL 94 HB)
 light grey RAL 7035
 160x160x90mm
 IP 66



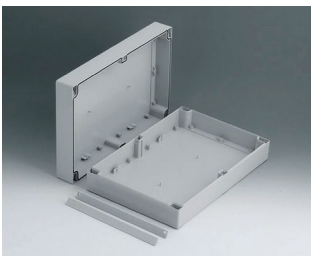
C2116162
 ROBUST-BOX WIDTH 160,
 Vers. II
 PC (UL 94 HB)
 light grey RAL 7035
 160x160x90mm
 IP 66



C2116241
 ROBUST-BOX WIDTH 160,
 Vers. I
 ABS (UL 94 HB)
 light grey RAL 7035
 240x160x90mm
 IP 66



C2116242
 ROBUST-BOX WIDTH 160,
 Vers. II
 PC (UL 94 HB)
 light grey RAL 7035
 240x160x90mm
 IP 66



C2120301
 ROBUST-BOX WIDTH 200,
 Vers. I
 ABS (UL 94 HB)
 light grey RAL 7035
 300x200x80mm
 IP 66



C2124361
 ROBUST-BOX WIDTH 240,
 Vers. I
 ABS (UL 94 HB)
 light grey RAL 7035
 360x240x80mm
 IP 66



C2416241
 ROBUST-BOX WIDTH 160,
 Vers. I
 ABS (UL 94 HB)
 light grey RAL 7035
 240x160x120mm
 IP 66



C2416242
 ROBUST-BOX WIDTH 160,
 Vers. II
 PC (UL 94 HB)
 light grey RAL 7035
 240x160x120mm
 IP 66



C2420301
 ROBUST-BOX WIDTH 200,
 Vers. I
 ABS (UL 94 HB)
 light grey RAL 7035
 300x200x120mm
 IP 66



C2424361
 ROBUST-BOX WIDTH 240,
 Vers. I
 ABS (UL 94 HB)
 light grey RAL 7035
 360x240x120mm
 IP 66



C2520301
 ROBUST-BOX WIDTH 200,
 Vers. I
 ABS (UL 94 HB)
 light grey RAL 7035
 300x200x160mm
 IP 66



C2524361
 ROBUST-BOX WIDTH 240,
 Vers. I
 ABS (UL 94 HB)
 light grey RAL 7035
 360x240x160mm
 IP 66

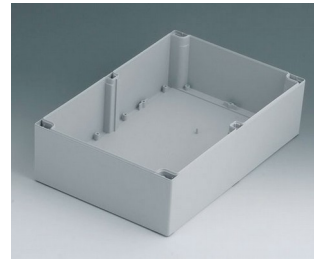
ROBUST-BOX



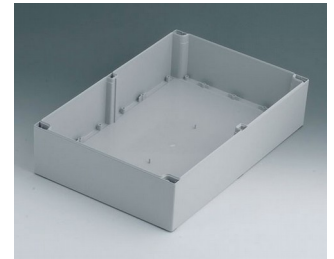
C3162401
Case shell 160, with groove
ABS (UL 94 HB)
light grey RAL 7035
240x160x60mm



C3162402
Case shell 160, with groove
PC (UL 94 HB)
light grey RAL 7035
240x160x60mm



C4203001
Case shell 200, with tongue
ABS (UL 94 HB)
light grey RAL 7035
300x200x80mm



C4243601
Case shell 240, with tongue
ABS (UL 94 HB)
light grey RAL 7035
360x240x80mm

System components to complete



C0080801
Case shell 80, with groove
ABS (UL 94 HB)
light grey RAL 7035
80x80x20mm



C0080802
Case shell 80, with groove
PC (UL 94 HB)
light grey RAL 7035
80x80x20mm



C0081201
Case shell 80, with groove
ABS (UL 94 HB)
light grey RAL 7035
120x80x20mm



C0081202
Case shell 80, with groove
PC (UL 94 HB)
light grey RAL 7035
120x80x20mm



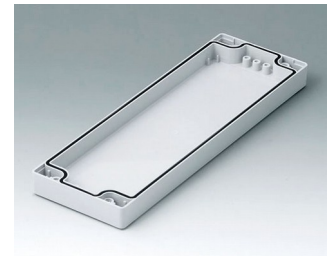
C0081601
Case shell 80, with groove
ABS (UL 94 HB)
light grey RAL 7035
160x80x20mm



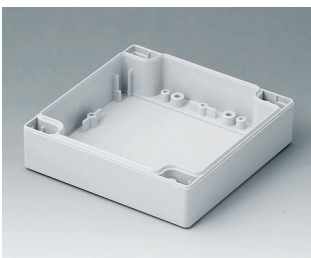
C0081602
Case shell 80, with groove
PC (UL 94 HB)
light grey RAL 7035
160x80x20mm



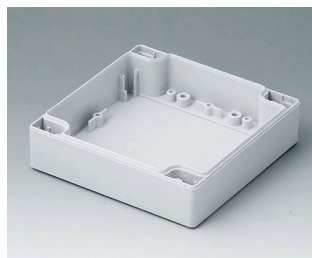
C0082401
Case shell 80, with groove
ABS (UL 94 HB)
light grey RAL 7035
240x80x20mm



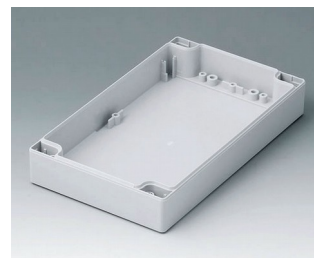
C0082402
Case shell 80, with groove
PC (UL 94 HB)
light grey RAL 7035
240x80x20mm



C0121201
Case shell 120, with tongue
ABS (UL 94 HB)
light grey RAL 7035
120x120x30mm



C0121202
Case shell 120, with tongue
PC (UL 94 HB)
light grey RAL 7035
120x120x30mm



C0122001
Case shell 120, with tongue
ABS (UL 94 HB)
light grey RAL 7035
200x120x30mm

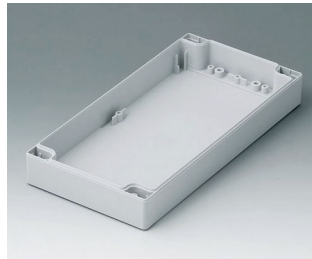


C0122002
Case shell 120, with tongue
PC (UL 94 HB)
light grey RAL 7035
200x120x30mm

ROBUST-BOX



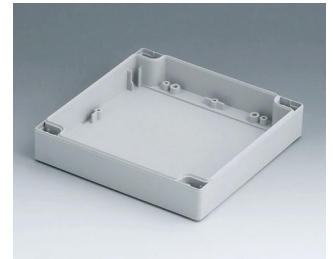
C0122401
Case shell 120, with tongue
ABS (UL 94 HB)
light grey RAL 7035
240x120x30mm



C0122402
Case shell 120, with tongue
PC (UL 94 HB)
light grey RAL 7035
240x120x30mm



C0161601
Case shell 160, with tongue
ABS (UL 94 HB)
light grey RAL 7035
160x160x30mm



C0161602
Case shell 160, with tongue
PC (UL 94 HB)
light grey RAL 7035
160x160x30mm



C0162401
Case shell 160, with tongue
ABS (UL 94 HB)
light grey RAL 7035
240x160x30mm



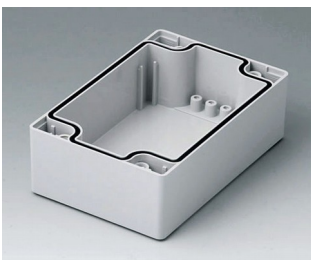
C0162402
Case shell 160, with tongue
PC (UL 94 HB)
light grey RAL 7035
240x160x30mm



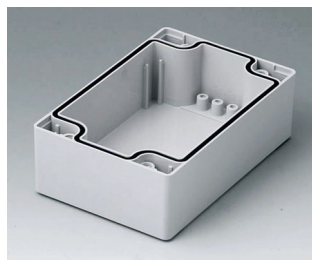
C2080801
Case shell 80, with groove
ABS (UL 94 HB)
light grey RAL 7035
80x80x40mm



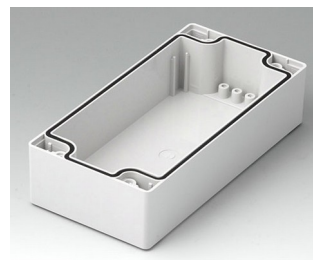
C2080802
Case shell 80, with groove
PC (UL 94 HB)
light grey RAL 7035
80x80x40mm



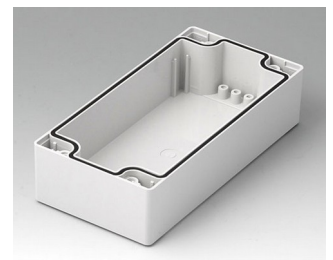
C2081201
Case shell 80, with groove
ABS (UL 94 HB)
light grey RAL 7035
120x80x40mm



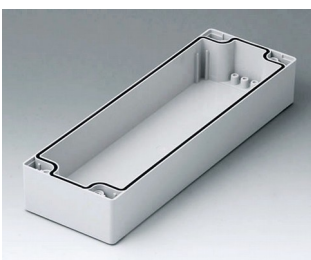
C2081202
Case shell 80, with groove
PC (UL 94 HB)
light grey RAL 7035
120x80x40mm



C2081601
Case shell 80, with groove
ABS (UL 94 HB)
light grey RAL 7035
160x80x40mm



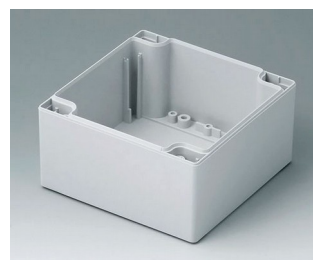
C2081602
Case shell 80, with groove
PC (UL 94 HB)
light grey RAL 7035
160x80x40mm



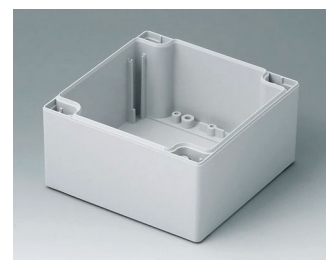
C2082401
Case shell 80, with groove
ABS (UL 94 HB)
light grey RAL 7035
240x80x40mm



C2082402
Case shell 80, with groove
PC (UL 94 HB)
light grey RAL 7035
240x80x40mm



C2121201
Case shell 120, with tongue
ABS (UL 94 HB)
light grey RAL 7035
120x120x60mm



C2121202
Case shell 120, with tongue
PC (UL 94 HB)
light grey RAL 7035
120x120x60mm

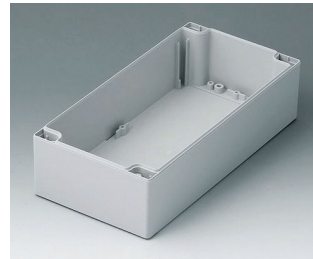
ROBUST-BOX



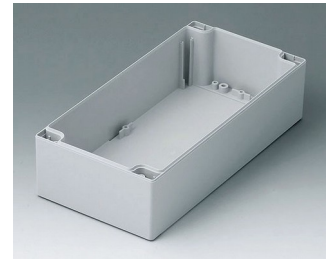
C2122001
Case shell 120, with tongue
ABS (UL 94 HB)
light grey RAL 7035
200x120x60mm



C2122002
Case shell 120, with tongue
PC (UL 94 HB)
light grey RAL 7035
200x120x60mm



C2122401
Case shell 120, with tongue
ABS (UL 94 HB)
light grey RAL 7035
240x120x60mm



C2122402
Case shell 120, with tongue
PC (UL 94 HB)
light grey RAL 7035
240x120x60mm



C2161601
Case shell 160, with tongue
ABS (UL 94 HB)
light grey RAL 7035
160x160x60mm



C2161602
Case shell 160, with tongue
PC (UL 94 HB)
light grey RAL 7035
160x160x60mm



C2162401
Case shell 160, with tongue
ABS (UL 94 HB)
light grey RAL 7035
240x160x60mm



C2162402
Case shell 160, with tongue
PC (UL 94 HB)
light grey RAL 7035
240x160x60mm



C2203001
Case shell 200, with groove
ABS (UL 94 HB)
light grey RAL 7035
300x200x40mm



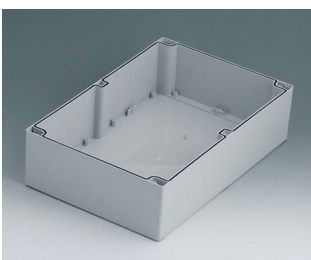
C2243601
Case shell 240, with groove
ABS (UL 94 HB)
light grey RAL 7035
360x240x40mm



C2299001
Assembly kit



C2299002
Assembly kit



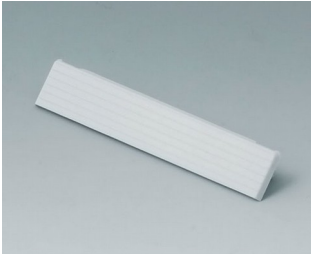
C5203001
Case shell 200, with groove
ABS (UL 94 HB)
light grey RAL 7035
300x200x80mm



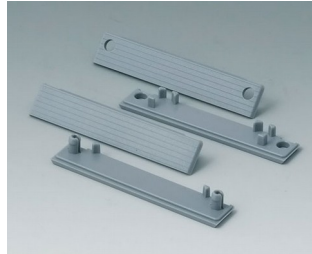
C5243601
Case shell 240, with groove
ABS (UL 94 HB)
light grey RAL 7035
360x240x80mm

ROBUST-BOX

Accessory to complete



C2200801
Cover strips 80, without holes
PC (UL 94 HB)
light grey RAL 7035



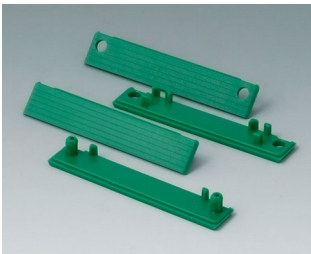
C2201082
Cover strips 80
PC (UL 94 HB)
silver grey RAL 7001



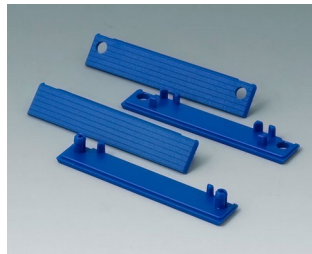
C2201084
Cover strips 80
PC (UL 94 HB)
red RAL 3020



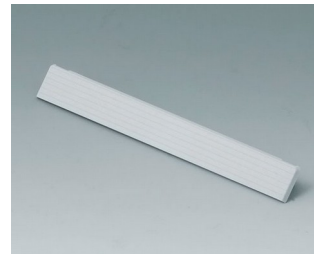
C2201085
Cover strips 80
PC (UL 94 HB)
yellow RAL 1023



C2201086
Cover strips 80
PC (UL 94 HB)
green RAL 6024



C2201087
Cover strips 80
PC (UL 94 HB)
blue RAL 5017



C2201201
Cover strips 120, without holes
PC (UL 94 HB)
light grey RAL 7035



C2201601
Cover strips 160, without holes
PC (UL 94 HB)
light grey RAL 7035



C2202001
Cover strips 200, without holes
PC (UL 94 HB)
light grey RAL 7035



C2202401
Cover strips 240, without holes
PC (UL 94 HB)
light grey RAL 7035



C2203123
Cover strips 120
PC (UL 94 HB)
silver grey RAL 7001



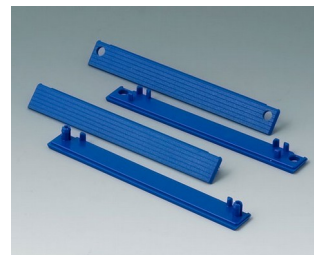
C2203124
Cover strips 120
PC (UL 94 HB)
red RAL 3020



C2203125
Cover strips 120
PC (UL 94 HB)
yellow RAL 1023



C2203126
Cover strips 120
PC (UL 94 HB)
green RAL 6024



C2203127
Cover strips 120
PC (UL 94 HB)
blue RAL 5017



C2204162
Cover strips 160
PC (UL 94 HB)
silver grey RAL 7001

ROBUST-BOX



C2204164
Cover strips 160
PC (UL 94 HB)
red RAL 3020



C2204165
Cover strips 160
PC (UL 94 HB)
yellow RAL 1023



C2204166
Cover strips 160
PC (UL 94 HB)
green RAL 6024



C2204167
Cover strips 160
PC (UL 94 HB)
blue RAL 5017



C2210801
Cover strips 80, with holes
PC (UL 94 HB)
light grey RAL 7035



C2211201
Cover strips 120, with holes
PC (UL 94 HB)
light grey RAL 7035



C2211601
Cover strips 160, with holes
PC (UL 94 HB)
light grey RAL 7035



C2212001
Cover strips 200, with holes
PC (UL 94 HB)
light grey RAL 7035



C2212401
Cover strips 240, with holes
PC (UL 94 HB)
light grey RAL 7035

Accessory "protection"



C2299040
Security plug
PA 6 (UL 94 HB)
light grey RAL 7035



C2299042
Security kit width 120
PA 6 (UL 94 HB)
light grey RAL 7035



C2299046
Security kit width 160
PA 6 (UL 94 HB)
light grey RAL 7035



C2299048
Security kit width 80
PA 6 (UL 94 HB)
light grey RAL 7035

ROBUST-BOX



C2306917
Pressure equalisation element
M6x0.75
PA 6 (UL 94 HB)
light grey RAL 7035
IP 56



C2310917
Pressure equalisation element
M10x1
PA 6 (UL 94 HB)
light grey RAL 7035
IP 56

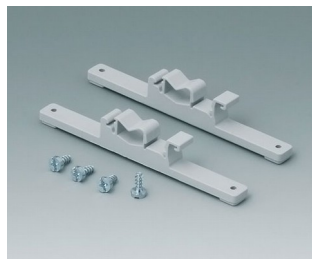


C2320137
Cable grommet
EPDM
light grey RAL 7035
IP 67

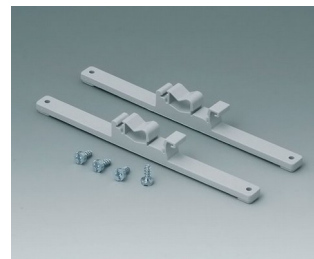
Accessory "wall/holder"



C2201088
Fastening elements to DIN-Rails
PA 6
light grey RAL 7035



C2203128
Fastening elements to DIN-Rails
PA 6
light grey RAL 7035



C2204168
Fastening elements to DIN-Rails
PA 6
light grey RAL 7035



C2299028
Wall mounting brackets
PA 6 (UL 94 HB)
light grey RAL 7035



C2299031
Securing hinge for the cover
PP
natural-coloured



C2299088
Hinge
PA 6
light grey RAL 7035

Accessory "screws"



A0306031
Self-tapping screws 3 x 6 mm
(PZ1)



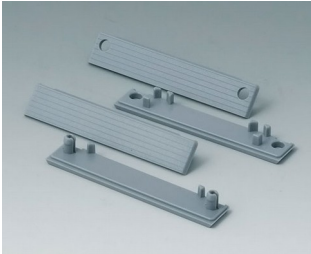
A0308031
Self-tapping screws 3 x 8 mm
(PZ1)



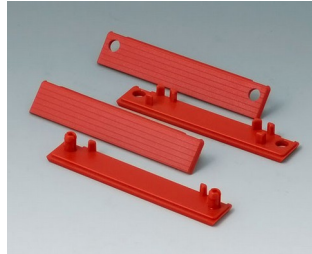
A0308132
Self-tapping screw 3 x 8 mm
(T10)
Stainless steel

ROBUST-BOX

Accessory



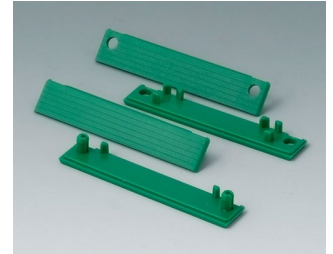
C2201082
Cover strips 80
PC (UL 94 HB)
silver grey RAL 7001



C2201084
Cover strips 80
PC (UL 94 HB)
red RAL 3020



C2201085
Cover strips 80
PC (UL 94 HB)
yellow RAL 1023



C2201086
Cover strips 80
PC (UL 94 HB)
green RAL 6024



C2201087
Cover strips 80
PC (UL 94 HB)
blue RAL 5017



C2203123
Cover strips 120
PC (UL 94 HB)
silver grey RAL 7001



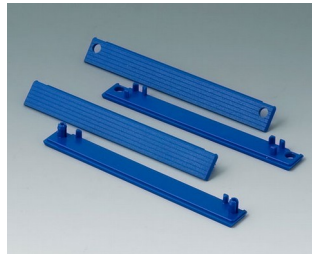
C2203124
Cover strips 120
PC (UL 94 HB)
red RAL 3020



C2203125
Cover strips 120
PC (UL 94 HB)
yellow RAL 1023



C2203126
Cover strips 120
PC (UL 94 HB)
green RAL 6024



C2203127
Cover strips 120
PC (UL 94 HB)
blue RAL 5017



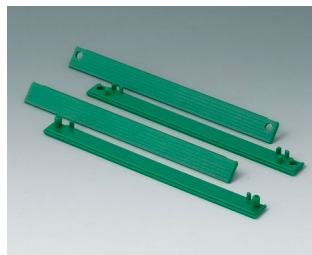
C2204162
Cover strips 160
PC (UL 94 HB)
silver grey RAL 7001



C2204164
Cover strips 160
PC (UL 94 HB)
red RAL 3020



C2204165
Cover strips 160
PC (UL 94 HB)
yellow RAL 1023



C2204166
Cover strips 160
PC (UL 94 HB)
green RAL 6024

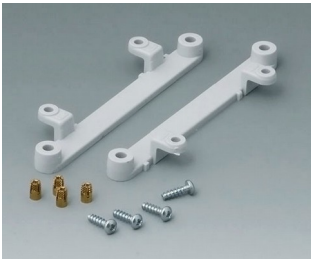


C2204167
Cover strips 160
PC (UL 94 HB)
blue RAL 5017



C2299018
Case feet
TPE (UL 94 HB)

ROBUST-BOX



C2299058
PCB support
PC (UL 94 HB)
light grey RAL 7035



C2299068
PCB support
PC (UL 94 HB)
light grey RAL 7035

Nos reservamos el derecho a realizar modificaciones técnicas. © OKW Gehäusesysteme, Buchen (Alemania).