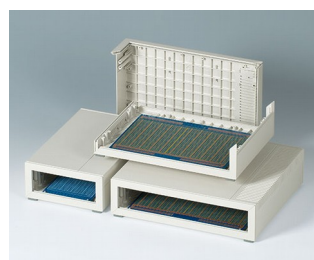
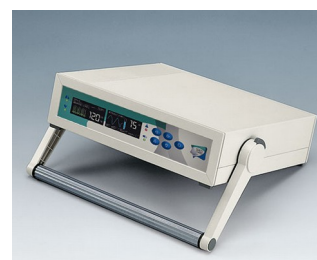


# MEDITEC

## Cajas plásticas de gran formato

La familia de cajas MEDITEC se caracterizan por su diseño moderno, con estilo y funcional, ideal para el alojamiento de equipamientos electrónicos contemporáneos de alta calidad.

- Diseño elegante y funcional.
- Uso versátil para aplicaciones móviles, de pared y de sobremesa.
- Construcción robusta gracias a la trama de nervios.
- Fácil de ensamblar.
- 4 tamaños, armonizados con los formatos de Eurocard simple, doble y alargado.
- 2 alturas estándar; escalable mediante paneles laterales.
- Frontal inclinado de forma ergonómica; si también se utiliza un panel lateral, pida la pieza intermedia para cerrar la abertura bajo el panel de control de forma óptima.
- Paneles frontales y posteriores de plástico con la misma calidad de superficie, fáciles de mecanizar.
- Protecciones correderas con o sin ventilación, en el color de la caja o color verde laguna, para esconder los tornillos de fijación; otras opciones de color bajo petición.
- Incluye 4 pies antideslizantes atornillables.
- Orejetas de fijación para montaje en la pared opcionales.
- Modelos con asa; para aplicaciones portátiles, en caso necesario, el ajuste mecánico permite al usuario posicionarlo en el ángulo adecuado, en intervalos de 30°.
- Elementos de fijación interna para PCBs y otros componentes.
- Cabezales de fijación para placas de circuitos y piezas de montaje.



# MEDITEC

## Ejemplos de aplicación

- Tecnologías de medicina y laboratorio
- Salud
- Control de procesos
- Tecnologías de medición y regulación
- Periféricos informáticos, módems e interfaces
- Tecnologías de comunicación y redes
- Recopilación de datos



amicOx pulse oximeter



Dry milling unit for foot care



NeurOne Tesla EEG System



Pneumatic Lithotripter System

## Modificaciones específicas del cliente

¿Qué necesita en su producto personalizado? En caso necesario, le suministramos las cajas y botones giratorios listas para el montaje con todas las modificaciones y acabados precisos.  
Opciones de productos para Meditec



Mecanizado



Lacado



Impresión



Inscripción láser



Materiales especiales



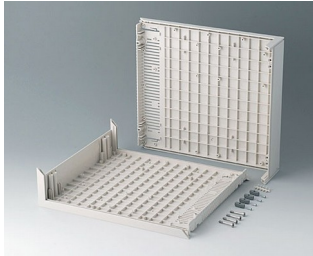
Compatibilidad  
electromagnética



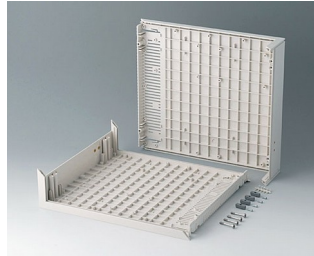
Confección y montaje

# MEDITEC

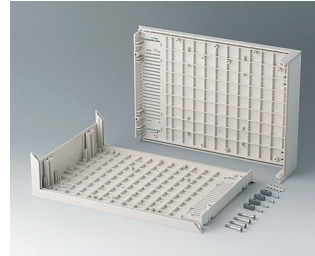
## Versiones



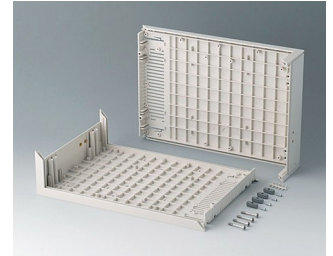
**B2010007**  
L-shells D 220, without holes  
ABS (UL 94 HB)  
off-white RAL 9002  
290x260x74mm



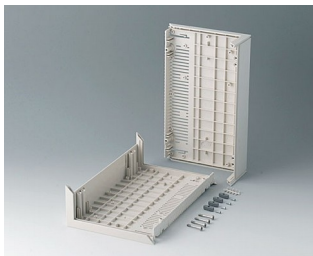
**B2010107**  
L-shells D 220, with holes for  
handle  
ABS (UL 94 HB)  
off-white RAL 9002  
290x260x74mm



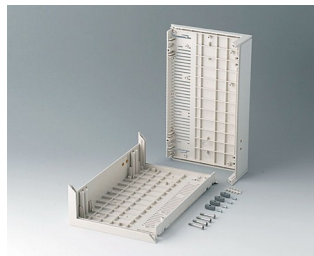
**B2011007**  
L-shells D 160, without holes  
ABS (UL 94 HB)  
off-white RAL 9002  
290x200x74mm



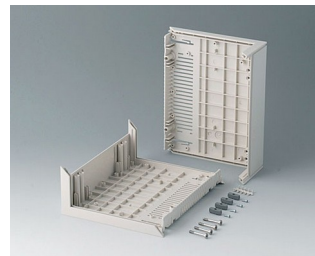
**B2011107**  
L-shells D 160, with holes for  
handle  
ABS (UL 94 HB)  
off-white RAL 9002  
290x200x74mm



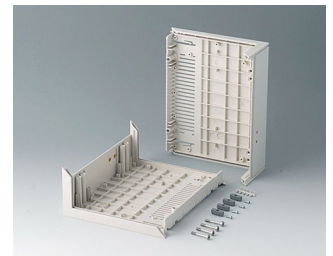
**B2012007**  
L-shells E 220, without holes  
ABS (UL 94 HB)  
off-white RAL 9002  
160x260x74mm



**B2012107**  
L-shells E 220, with holes for  
handle  
ABS (UL 94 HB)  
off-white RAL 9002  
160x260x74mm



**B2013007**  
L-shells E 160, without holes  
ABS (UL 94 HB)  
off-white RAL 9002  
160x200x74mm



**B2013107**  
L-shells E 160, with holes for  
handle  
ABS (UL 94 HB)  
off-white RAL 9002  
160x200x74mm



**B2210005**  
MEDITEC D 220, without handle  
bar  
ABS (UL 94 HB)  
off-white RAL 9002  
290x260x74mm  
IP 40



**B2210007**  
MEDITEC D 220, without handle  
bar  
ABS (UL 94 HB)  
off-white RAL 9002  
290x260x74mm  
IP 40



**B2210015**  
MEDITEC D 220, without handle  
bar  
ABS (UL 94 HB)  
off-white RAL 9002  
290x260x74mm  
IP 40



**B2210017**  
MEDITEC D 220, without handle  
bar  
ABS (UL 94 HB)  
off-white RAL 9002  
290x260x74mm  
IP 40



# MEDITEC



**B2210105**  
MEDITEC D 220, with handle bar  
ABS (UL 94 HB)  
off-white RAL 9002  
290x260x74mm  
IP 40



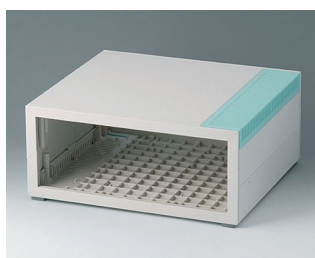
**B2210107**  
MEDITEC D 220, with handle bar  
ABS (UL 94 HB)  
off-white RAL 9002  
290x260x74mm  
IP 40



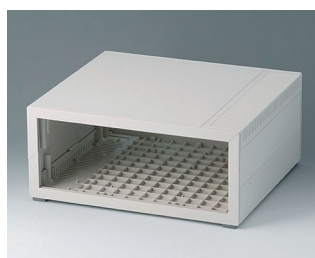
**B2210115**  
MEDITEC D 220, with handle bar  
ABS (UL 94 HB)  
off-white RAL 9002  
290x260x74mm  
IP 40



**B2210117**  
MEDITEC D 220, with handle bar  
ABS (UL 94 HB)  
off-white RAL 9002  
290x260x74mm  
IP 40



**B2210205**  
MEDITEC D 220, without handle bar  
ABS (UL 94 HB)  
off-white RAL 9002  
290x260x124mm  
IP 40



**B2210207**  
MEDITEC D 220, without handle bar  
ABS (UL 94 HB)  
off-white RAL 9002  
290x260x124mm  
IP 40



**B2210215**  
MEDITEC D 220, without handle bar  
ABS (UL 94 HB)  
off-white RAL 9002  
290x260x124mm  
IP 40



**B2210217**  
MEDITEC D 220, without handle bar  
ABS (UL 94 HB)  
off-white RAL 9002  
290x260x124mm  
IP 40



**B2210305**  
MEDITEC D 220, with handle bar  
ABS (UL 94 HB)  
off-white RAL 9002  
290x260x124mm  
IP 40



**B2210307**  
MEDITEC D 220, with handle bar  
ABS (UL 94 HB)  
off-white RAL 9002  
290x260x124mm  
IP 40



**B2210315**  
MEDITEC D 220, with handle bar  
ABS (UL 94 HB)  
off-white RAL 9002  
290x260x124mm  
IP 40



**B2210317**  
MEDITEC D 220, with handle bar  
ABS (UL 94 HB)  
off-white RAL 9002  
290x260x124mm  
IP 40



**B2211005**  
MEDITEC D 160, without handle bar  
ABS (UL 94 HB)  
off-white RAL 9002  
290x200x74mm  
IP 40



**B2211007**  
MEDITEC D 160, without handle bar  
ABS (UL 94 HB)  
off-white RAL 9002  
290x200x74mm  
IP 40



**B2211015**  
MEDITEC D 160, without handle bar  
ABS (UL 94 HB)  
off-white RAL 9002  
290x200x74mm  
IP 40



**B2211017**  
MEDITEC D 160, without handle bar  
ABS (UL 94 HB)  
off-white RAL 9002  
290x200x74mm  
IP 40

# MEDITEC



**B2211105**  
MEDITEC D 160, with handle bar  
ABS (UL 94 HB)  
off-white RAL 9002  
290x200x74mm  
IP 40



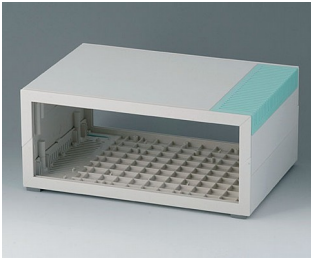
**B2211107**  
MEDITEC D 160, with handle bar  
ABS (UL 94 HB)  
off-white RAL 9002  
290x200x74mm  
IP 40



**B2211115**  
MEDITEC D 160, with handle bar  
ABS (UL 94 HB)  
off-white RAL 9002  
290x200x74mm  
IP 40



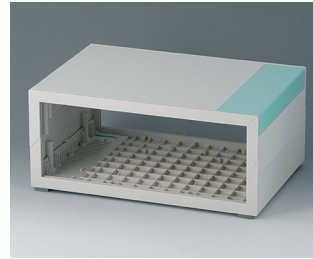
**B2211117**  
MEDITEC D 160, with handle bar  
ABS (UL 94 HB)  
off-white RAL 9002  
290x200x74mm  
IP 40



**B2211205**  
MEDITEC D 160, without handle bar  
ABS (UL 94 HB)  
off-white RAL 9002  
290x200x124mm  
IP 40



**B2211207**  
MEDITEC D 160, without handle bar  
ABS (UL 94 HB)  
off-white RAL 9002  
290x200x124mm  
IP 40



**B2211215**  
MEDITEC D 160, without handle bar  
ABS (UL 94 HB)  
off-white RAL 9002  
290x200x124mm  
IP 40



**B2211217**  
MEDITEC D 160, without handle bar  
ABS (UL 94 HB)  
off-white RAL 9002  
290x200x124mm  
IP 40



**B2211305**  
MEDITEC D 160, with handle bar  
ABS (UL 94 HB)  
off-white RAL 9002  
290x200x124mm  
IP 40



**B2211307**  
MEDITEC D 160, with handle bar  
ABS (UL 94 HB)  
off-white RAL 9002  
290x200x124mm  
IP 40



**B2211315**  
MEDITEC D 160, with handle bar  
ABS (UL 94 HB)  
off-white RAL 9002  
290x200x124mm  
IP 40



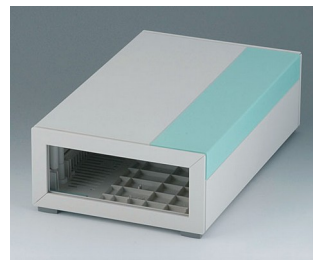
**B2211317**  
MEDITEC D 160, with handle bar  
ABS (UL 94 HB)  
off-white RAL 9002  
290x200x124mm  
IP 40



**B2212005**  
MEDITEC E 220, without handle bar  
ABS (UL 94 HB)  
off-white RAL 9002  
160x260x74mm  
IP 40



**B2212007**  
MEDITEC E 220, without handle bar  
ABS (UL 94 HB)  
off-white RAL 9002  
160x260x74mm  
IP 40



**B2212015**  
MEDITEC E 220, without handle bar  
ABS (UL 94 HB)  
off-white RAL 9002  
160x260x74mm  
IP 40



**B2212017**  
MEDITEC E 220, without handle bar  
ABS (UL 94 HB)  
off-white RAL 9002  
160x260x74mm  
IP 40



# MEDITEC



**B2212105**  
MEDITEC E 220, with handle bar  
ABS (UL 94 HB)  
off-white RAL 9002  
160x260x74mm  
IP 40



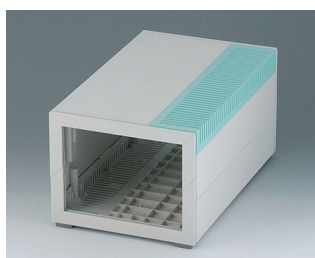
**B2212107**  
MEDITEC E 220, with handle bar  
ABS (UL 94 HB)  
off-white RAL 9002  
160x260x74mm  
IP 40



**B2212115**  
MEDITEC E 220, with handle bar  
ABS (UL 94 HB)  
off-white RAL 9002  
160x260x74mm  
IP 40



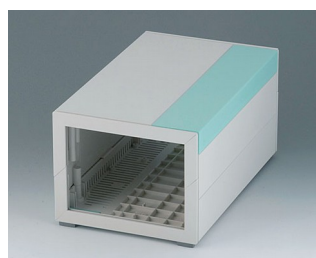
**B2212117**  
MEDITEC E 220, with handle bar  
ABS (UL 94 HB)  
off-white RAL 9002  
160x260x74mm  
IP 40



**B2212205**  
MEDITEC E 220, without handle bar  
ABS (UL 94 HB)  
off-white RAL 9002  
160x260x124mm  
IP 40



**B2212207**  
MEDITEC E 220, without handle bar  
ABS (UL 94 HB)  
off-white RAL 9002  
160x260x124mm  
IP 40



**B2212215**  
MEDITEC E 220, without handle bar  
ABS (UL 94 HB)  
off-white RAL 9002  
160x260x124mm  
IP 40



**B2212217**  
MEDITEC E 220, without handle bar  
ABS (UL 94 HB)  
off-white RAL 9002  
160x260x124mm  
IP 40



**B2212305**  
MEDITEC E 220, with handle bar  
ABS (UL 94 HB)  
off-white RAL 9002  
160x260x124mm  
IP 40



**B2212307**  
MEDITEC E 220, with handle bar  
ABS (UL 94 HB)  
off-white RAL 9002  
160x260x124mm  
IP 40



**B2212315**  
MEDITEC E 220, with handle bar  
ABS (UL 94 HB)  
off-white RAL 9002  
160x260x124mm  
IP 40



**B2212317**  
MEDITEC E 220, with handle bar  
ABS (UL 94 HB)  
off-white RAL 9002  
160x260x124mm  
IP 40



**B2213005**  
MEDITEC E 160, without handle bar  
ABS (UL 94 HB)  
off-white RAL 9002  
160x200x74mm  
IP 40



**B2213007**  
MEDITEC E 160, without handle bar  
ABS (UL 94 HB)  
off-white RAL 9002  
160x200x74mm  
IP 40



**B2213015**  
MEDITEC E 160, without handle bar  
ABS (UL 94 HB)  
off-white RAL 9002  
160x200x74mm  
IP 40



**B2213017**  
MEDITEC E 160, without handle bar  
ABS (UL 94 HB)  
off-white RAL 9002  
160x200x74mm  
IP 40

# MEDITEC



**B2213105**  
MEDITEC E 160, with handle bar  
ABS (UL 94 HB)  
off-white RAL 9002  
160x200x74mm  
IP 40



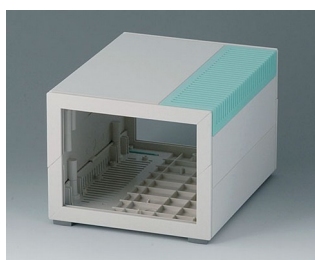
**B2213107**  
MEDITEC E 160, with handle bar  
ABS (UL 94 HB)  
off-white RAL 9002  
160x200x74mm  
IP 40



**B2213115**  
MEDITEC E 160, with handle bar  
ABS (UL 94 HB)  
off-white RAL 9002  
160x200x74mm  
IP 40



**B2213117**  
MEDITEC E 160, with handle bar  
ABS (UL 94 HB)  
off-white RAL 9002  
160x200x74mm  
IP 40



**B2213205**  
MEDITEC E 160, without handle bar  
ABS (UL 94 HB)  
off-white RAL 9002  
160x200x124mm  
IP 40



**B2213207**  
MEDITEC E 160, without handle bar  
ABS (UL 94 HB)  
off-white RAL 9002  
160x200x124mm  
IP 40



**B2213215**  
MEDITEC E 160, without handle bar  
ABS (UL 94 HB)  
off-white RAL 9002  
160x200x124mm  
IP 40



**B2213217**  
MEDITEC E 160, without handle bar  
ABS (UL 94 HB)  
off-white RAL 9002  
160x200x124mm  
IP 40



**B2213305**  
MEDITEC E 160, with handle bar  
ABS (UL 94 HB)  
off-white RAL 9002  
160x200x124mm  
IP 40



**B2213307**  
MEDITEC E 160, with handle bar  
ABS (UL 94 HB)  
off-white RAL 9002  
160x200x124mm  
IP 40



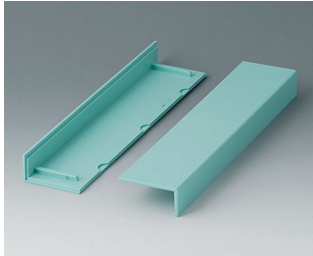
**B2213315**  
MEDITEC E 160, with handle bar  
ABS (UL 94 HB)  
off-white RAL 9002  
160x200x124mm  
IP 40



**B2213317**  
MEDITEC E 160, with handle bar  
ABS (UL 94 HB)  
off-white RAL 9002  
160x200x124mm  
IP 40

# MEDITEC

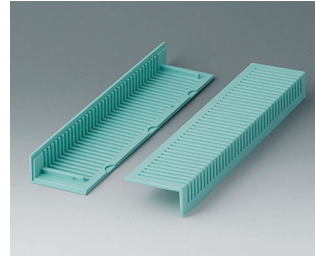
## System components to complete



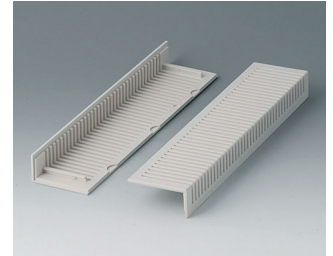
**B2020005**  
Side trims 220, without ventilation  
ABS  
lagoon



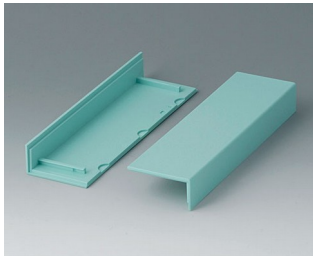
**B2020007**  
Side trims 220, without ventilation  
ABS (UL 94 HB)  
off-white RAL 9002



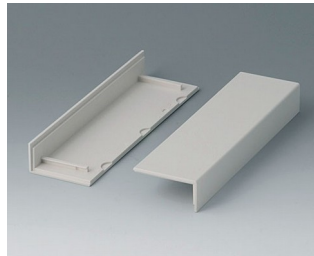
**B2021005**  
Side trims 220, with ventilation  
ABS  
lagoon



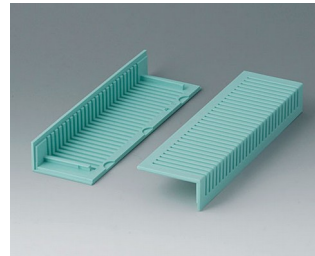
**B2021007**  
Side trims 220, with ventilation  
ABS (UL 94 HB)  
off-white RAL 9002



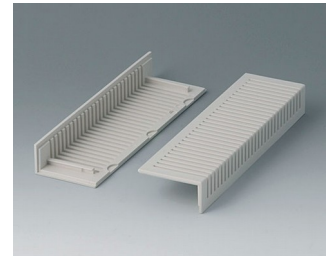
**B2022005**  
Side trims 160, without ventilation  
ABS  
lagoon



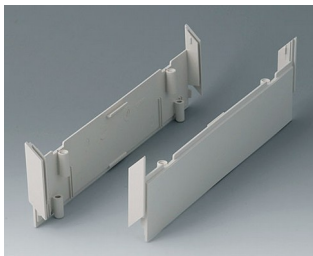
**B2022007**  
Side trims 160, without ventilation  
ABS (UL 94 HB)  
off-white RAL 9002



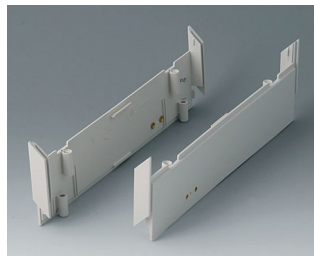
**B2023005**  
Side trims 160, with ventilation  
ABS  
lagoon



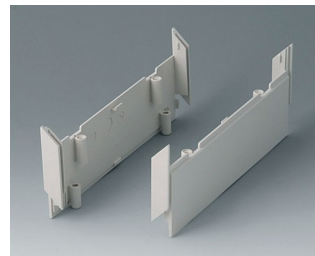
**B2023007**  
Side trims 160, with ventilation  
ABS (UL 94 HB)  
off-white RAL 9002



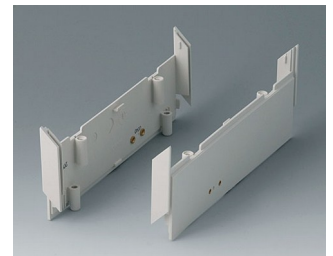
**B2030007**  
Side panels 220, without holes  
ABS (UL 94 HB)  
off-white RAL 9002



**B2030107**  
Side panels 220, with holes for handle  
ABS (UL 94 HB)  
off-white RAL 9002



**B2031007**  
Side panels 160, without holes  
ABS (UL 94 HB)  
off-white RAL 9002



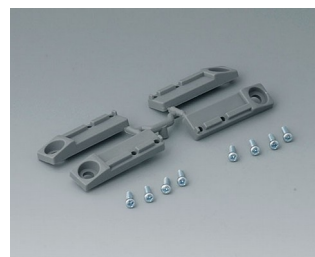
**B2031107**  
Side panels 160, with holes for handle  
ABS (UL 94 HB)  
off-white RAL 9002



**B2116507**  
Handle bar E  
PA 6  
off-white RAL 9002



**B2129507**  
Handle bar D  
PA 6  
off-white RAL 9002



**B2133012**  
Wall mounting brackets  
PA 6  
volcano

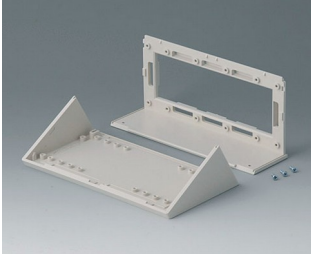


**B2135017**  
Connectors  
ABS (UL 94 HB)  
off-white RAL 9002

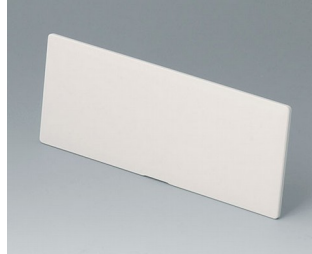


# MEDITEC

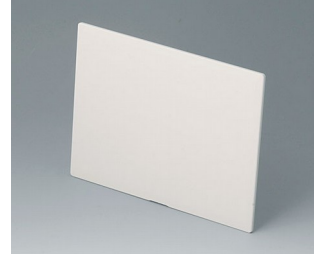
## Accessory to complete



**B2116007**  
Sloping control panel E  
ABS (UL 94 HB)  
off-white RAL 9002



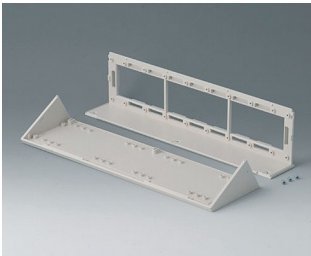
**B2116307**  
Front / rear panel E, flat  
ABS (UL 94 HB)  
off-white RAL 9002  
141,6x55,6x3mm



**B2116407**  
Front / rear panel Z1  
ABS (UL 94 HB)  
off-white RAL 9002  
141,6x105,6x3mm



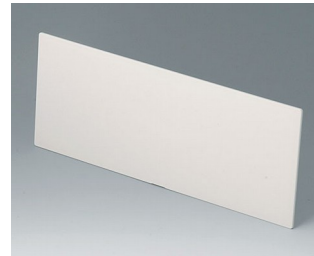
**B2116707**  
Infill panel E  
ABS (UL 94 HB)  
off-white RAL 9002  
142x55x5mm



**B2129007**  
Sloping control panel D  
ABS (UL 94 HB)  
off-white RAL 9002



**B2129307**  
Front / rear panel D, flat  
ABS (UL 94 HB)  
off-white RAL 9002  
271,6x55,6x3mm

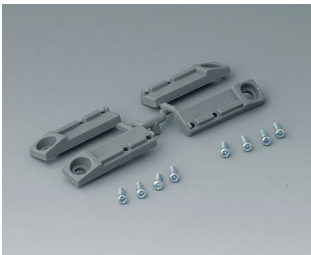


**B2129407**  
Front / rear panel Z1  
ABS (UL 94 HB)  
off-white RAL 9002  
271,6x105,6x3mm



**B2129707**  
Infill panel D  
ABS (UL 94 HB)  
off-white RAL 9002  
272x55x5mm

## Accessory "wall/holder"



**B2133012**  
Wall mounting brackets  
PA 6  
volcano



**B2134012**  
Stacking elements  
PA 6  
volcano

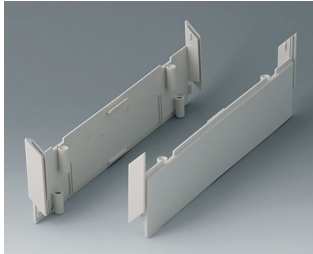
## Accessory "screws"



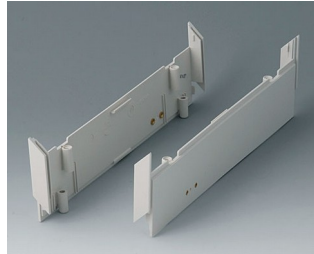
**A9199008**  
Set of screws

# MEDITEC

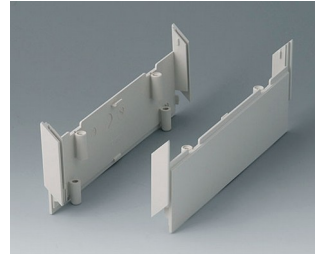
## Accessory



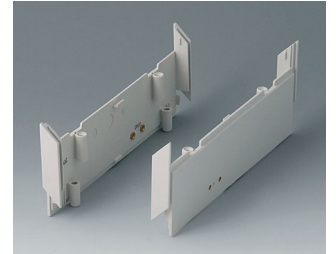
**B2030007**  
Side panels 220, without holes  
ABS (UL 94 HB)  
off-white RAL 9002



**B2030107**  
Side panels 220, with holes for  
handle  
ABS (UL 94 HB)  
off-white RAL 9002



**B2031007**  
Side panels 160, without holes  
ABS (UL 94 HB)  
off-white RAL 9002



**B2031107**  
Side panels 160, with holes for  
handle  
ABS (UL 94 HB)  
off-white RAL 9002



**B2116407**  
Front / rear panel Z1  
ABS (UL 94 HB)  
off-white RAL 9002  
141,6x105,6x3mm



**B2116507**  
Handle bar E  
PA 6  
off-white RAL 9002



**B2116707**  
Infill panel E  
ABS (UL 94 HB)  
off-white RAL 9002  
142x55x5mm



**B2129407**  
Front / rear panel Z1  
ABS (UL 94 HB)  
off-white RAL 9002  
271,6x105,6x3mm



**B2129507**  
Handle bar D  
PA 6  
off-white RAL 9002



**B2129707**  
Infill panel D  
ABS (UL 94 HB)  
off-white RAL 9002  
272x55x5mm



**B2134012**  
Stacking elements  
PA 6  
volcano



**B2135017**  
Connectors  
ABS (UL 94 HB)  
off-white RAL 9002

Nos reservamos el derecho a realizar modificaciones técnicas. © OKW Gehäusesysteme, Buchen (Alemania).