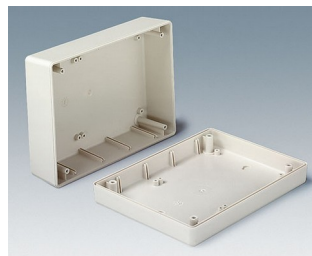
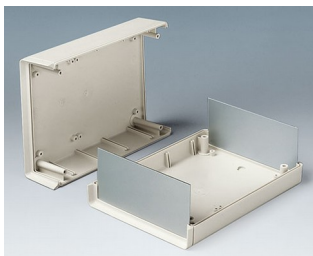
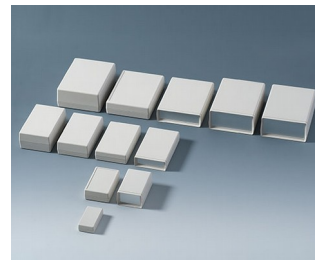


CAJAS DE ARMAZÓN

Cajas universales para instrumentos

El programa de carcasas de armazón viene en diferentes tamaños, alturas y tipos. Escoja la caja que mejor se adapte a sus requisitos especiales.

- 51 cajas en 3 tipos diferentes:
 - Tipo V** – Parte frontal abierta, parte posterior cerrada
 - Tipo O** – Parte frontal abierta, parte posterior abierta
 - Tipo G** – Parte frontal cerrada, parte posterior cerrada
- Gran estabilidad gracias a la unión continua mediante ranuras y lengüetas
- Listones guía para la instalación vertical de paneles de separación y placas de circuitos
- Cabezales de fijación en las partes superior e inferior
- Placas frontales y posteriores de aluminio o PMMA rojo (plexiglás®) como accesorio
- Modelos con compartimento para 4 pilas AA, 2 pilas AA, 1 pila 9 V o 2 pilas 9 V (tipos V y G)
- Modelo cerrado (tipo G) también con panel de control rebajado para proteger el teclado de membrana
- Categoría de protección hasta IP 65 en modelo cerrado (tipo G) sin compartimento para pilas al utilizar los juegos de juntas (accesorio)
- EMV: a petición, las carcasas de armazón también pueden venir aluminizadas; el contacto se mejora gracias a las bandas de contacto propuestas (accesorio)
- Orejetas de fijación de pared / juego de soporte de pared como accesorio
- Funciones adicionales con accesorios universales



CAJAS DE ARMAZÓN

Ejemplos de aplicación

- Tecnologías de medición y regulación
- Fabricación de sistemas de mando
- Tecnologías de medicina y laboratorio
- Dispositivos periféricos y de interfaz
- Cajas de módems y conmutadores



Magnetic metal detector



System for leak detection in leisure vehicles



Teleservice Gateway MGW/865

Modificaciones específicas del cliente

¿Qué necesita en su producto personalizado? En caso necesario, le suministramos las cajas y botones giratorios listas para el montaje con todas las modificaciones y acabados precisos.

Opciones de productos para Cajas de armazón



Mecanizado



Lacado



Impresión



Inscripción láser



Láminas decorativas



Materiales especiales



Compatibilidad electromagnética



Confección y montaje

CAJAS DE ALMACÉN

Versiones



A9404331
SHELL-TYPE CASES G 85,
Vers. I
ABS (UL 94 HB)
off-white RAL 9002
45x85x22mm
IP 65 opt.



A9404333
SHELL-TYPE CASES V 85,
Vers. I
ABS (UL 94 HB)
off-white RAL 9002
45x85x22mm



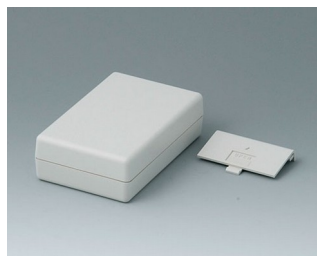
A9404341
SHELL-TYPE CASES G 85,
Vers. I
ABS (UL 94 HB)
off-white RAL 9002
45x85x33mm
IP 65 opt.



A9404441
SHELL-TYPE CASES G 85,
Vers. I
ABS (UL 94 HB)
off-white RAL 9002
45x85x45mm
IP 65 opt.



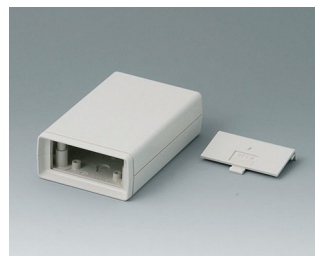
A9406331
SHELL-TYPE CASES G 110,
Vers. I
ABS (UL 94 HB)
off-white RAL 9002
72x114x33mm
IP 65 opt.



A9406332
SHELL-TYPE CASES G 110,
Vers. II
ABS (UL 94 HB)
off-white RAL 9002
72x114x33mm



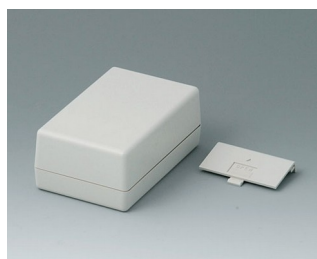
A9406333
SHELL-TYPE CASES V 110,
Vers. I
ABS (UL 94 HB)
off-white RAL 9002
72x114x33mm



A9406334
SHELL-TYPE CASES V 110,
Vers. II
ABS (UL 94 HB)
off-white RAL 9002
72x114x33mm



A9406341
SHELL-TYPE CASES G 110,
Vers. I
ABS (UL 94 HB)
off-white RAL 9002
72x114x45mm
IP 65 opt.



A9406342
SHELL-TYPE CASES G 110,
Vers. II
ABS (UL 94 HB)
off-white RAL 9002
72x114x45mm



A9406343
SHELL-TYPE CASES V 110,
Vers. I
ABS (UL 94 HB)
off-white RAL 9002
72x114x45mm

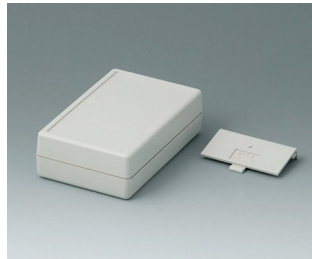


A9406344
SHELL-TYPE CASES V 110,
Vers. II
ABS (UL 94 HB)
off-white RAL 9002
72x114x45mm

CAJAS DE ARMAZÓN



A9406351
SHELL-TYPE CASES G 110,
Vers. I
ABS (UL 94 HB)
off-white RAL 9002
72x114x33,5mm
IP 65 opt.



A9406352
SHELL-TYPE CASES G 110,
Vers. II
ABS (UL 94 HB)
off-white RAL 9002
72x114x33,5mm



A9406441
SHELL-TYPE CASES G 110,
Vers. I
ABS (UL 94 HB)
off-white RAL 9002
72x114x57mm
IP 65 opt.



A9406443
SHELL-TYPE CASES V 110,
Vers. I
ABS (UL 94 HB)
off-white RAL 9002
72x114x57mm



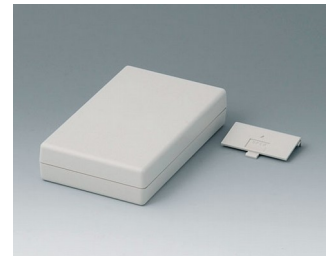
A9408330
SHELL-TYPE CASES O 155,
Vers. I
ABS (UL 94 HB)
off-white RAL 9002
95x158x33mm



A9408331
SHELL-TYPE CASES G 155,
Vers. I
ABS (UL 94 HB)
off-white RAL 9002
95x158x33mm
IP 65 opt.



A9408333
SHELL-TYPE CASES V 155,
Vers. I
ABS (UL 94 HB)
off-white RAL 9002
95x158x33mm



A9408335
SHELL-TYPE CASES G 155,
Vers. IV
ABS (UL 94 HB)
off-white RAL 9002
95x158x33mm



A9408336
SHELL-TYPE CASES V 155,
Vers. IV
ABS (UL 94 HB)
off-white RAL 9002
95x158x33mm



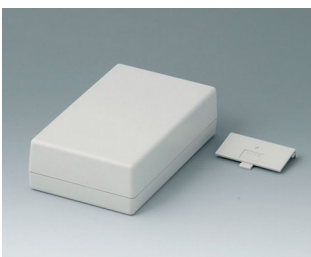
A9408340
SHELL-TYPE CASES O 155,
Vers. I
ABS (UL 94 HB)
off-white RAL 9002
95x158x45mm



A9408341
SHELL-TYPE CASES G 155,
Vers. I
ABS (UL 94 HB)
off-white RAL 9002
95x158x45mm
IP 65 opt.



A9408343
SHELL-TYPE CASES V 155,
Vers. I
ABS (UL 94 HB)
off-white RAL 9002
95x158x45mm



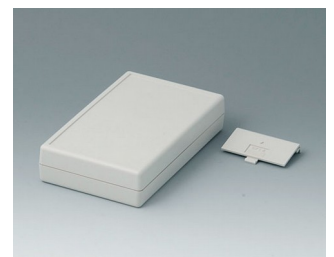
A9408345
SHELL-TYPE CASES G 155,
Vers. IV
ABS (UL 94 HB)
off-white RAL 9002
95x158x45mm



A9408346
SHELL-TYPE CASES V 155,
Vers. IV
ABS (UL 94 HB)
off-white RAL 9002
95x158x45mm



A9408351
SHELL-TYPE CASES G 155,
Vers. I
ABS (UL 94 HB)
off-white RAL 9002
95x158x33,5mm
IP 65 opt.



A9408355
SHELL-TYPE CASES G 155,
Vers. IV
ABS (UL 94 HB)
off-white RAL 9002
95x158x33,5mm

CAJAS DE ARMAZÓN



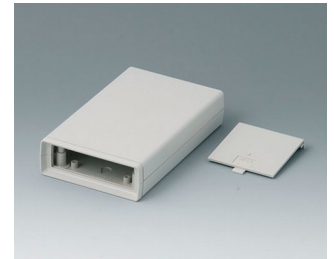
A9408440
SHELL-TYPE CASES O 155,
Vers. I
ABS (UL 94 HB)
off-white RAL 9002
95x155x57mm



A9408441
SHELL-TYPE CASES G 155,
Vers. I
ABS (UL 94 HB)
off-white RAL 9002
95x158x57mm
IP 65 opt.



A9408443
SHELL-TYPE CASES V 155,
Vers. I
ABS (UL 94 HB)
off-white RAL 9002
95x158x57mm



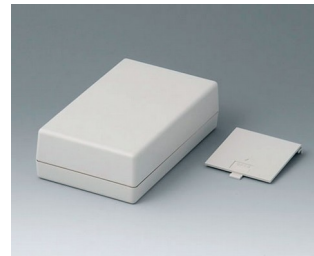
A9408638
SHELL-TYPE CASES V 155,
Vers. V
ABS (UL 94 HB)
off-white RAL 9002
95x158x33mm



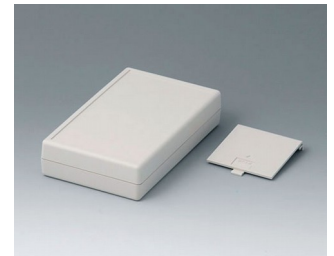
A9408648
SHELL-TYPE CASES V 155,
Vers. V
ABS (UL 94 HB)
off-white RAL 9002
95x158x45mm



A9408737
SHELL-TYPE CASES G 155,
Vers. V
ABS (UL 94 HB)
off-white RAL 9002
95x158x33mm



A9408747
SHELL-TYPE CASES G 155,
Vers. V
ABS (UL 94 HB)
off-white RAL 9002
95x158x45mm



A9408757
SHELL-TYPE CASES G 155,
Vers. V
ABS (UL 94 HB)
off-white RAL 9002
95x158x33,5mm



A9413330
SHELL-TYPE CASES O 190,
Vers. I
ABS (UL 94 HB)
off-white RAL 9002
138x190x45mm



A9413331
SHELL-TYPE CASES G 190,
Vers. I
ABS (UL 94 HB)
off-white RAL 9002
138x190x45mm
IP 65 opt.



A9413333
SHELL-TYPE CASES V 190,
Vers. I
ABS (UL 94 HB)
off-white RAL 9002
138x190x45mm



A9413340
SHELL-TYPE CASES O 190,
Vers. I
ABS (UL 94 HB)
off-white RAL 9002
138x190x68mm



A9413341
SHELL-TYPE CASES G 190,
Vers. I
ABS (UL 94 HB)
off-white RAL 9002
138x190x68mm
IP 65 opt.



A9413343
SHELL-TYPE CASES V 190,
Vers. I
ABS (UL 94 HB)
off-white RAL 9002
138x190x68mm



A9413351
SHELL-TYPE CASES G 190,
Vers. I
ABS (UL 94 HB)
off-white RAL 9002
138x190x45,5mm
IP 65 opt.



A9413440
SHELL-TYPE CASES O 190,
Vers. I
ABS (UL 94 HB)
off-white RAL 9002
138x190x91mm

CAJAS DE ARMAZÓN



A9413441
SHELL-TYPE CASES G 190,
Vers. I
ABS (UL 94 HB)
off-white RAL 9002
138x190x91mm
IP 65 opt.



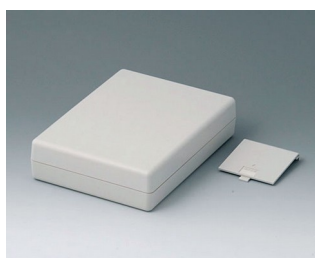
A9413443
SHELL-TYPE CASES V 190,
Vers. I
ABS (UL 94 HB)
off-white RAL 9002
138x190x91mm



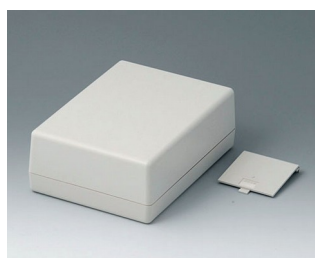
A9413638
SHELL-TYPE CASES V 190,
Vers. V
ABS (UL 94 HB)
off-white RAL 9002
138x190x45mm



A9413648
SHELL-TYPE CASES V 190,
Vers. V
ABS (UL 94 HB)
off-white RAL 9002
138x190x68mm



A9413737
SHELL-TYPE CASES G 190,
Vers. V
ABS (UL 94 HB)
off-white RAL 9002
138x190x45mm

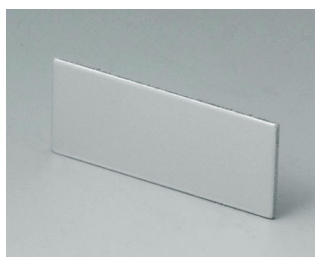


A9413747
SHELL-TYPE CASES G 190,
Vers. V
ABS (UL 94 HB)
off-white RAL 9002
138x190x68mm

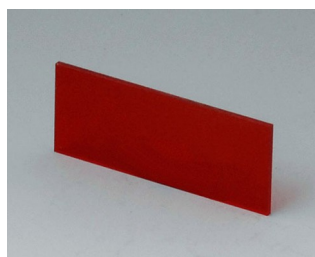


A9413757
SHELL-TYPE CASES G 190,
Vers. V
ABS (UL 94 HB)
off-white RAL 9002
138x190x45,5mm

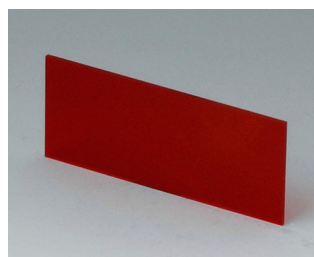
Accessory to complete



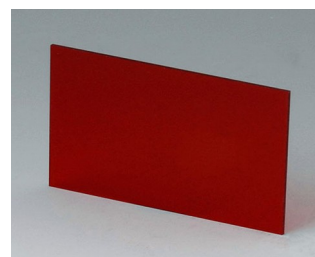
A9104111
Front / rear panel V 85
Aluminium
matt anodised
36x14,6x1mm



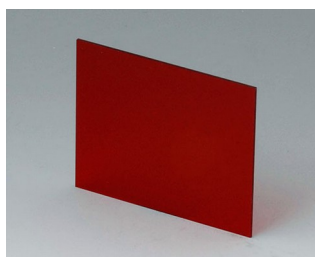
A9104113
Front / rear panel V 85
Acrylic glass
red transparent
36x14,6x1mm



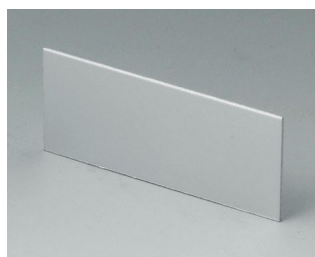
A9106113
Front / rear panel V 110
Acrylic glass
red transparent
59,3x25x1mm



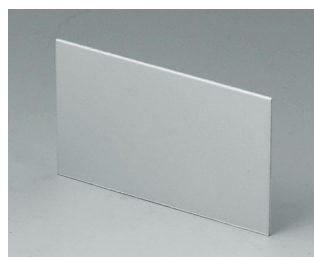
A9106123
Front / rear panel V 110
Acrylic glass
red transparent
59,3x37x1mm



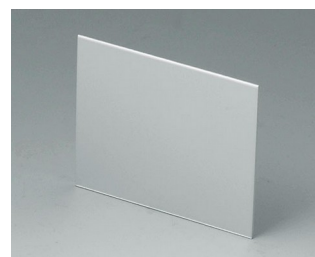
A9106223
Front / rear panel V 110
Acrylic glass
red transparent
59,3x49x1mm



A9107111
Front / rear panel V 110
Aluminium
matt anodised
59,3x25x1mm

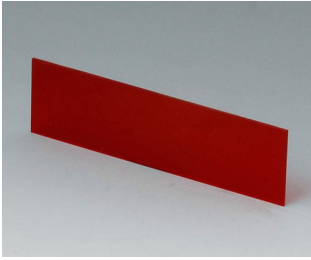


A9107121
Front / rear panel V 110
Aluminium
matt anodised
59,3x37x1mm

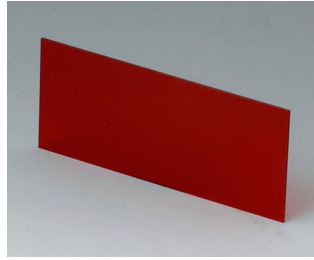


A9107221
Front / rear panel V 110
Aluminium
matt anodised
59,3x49x1mm

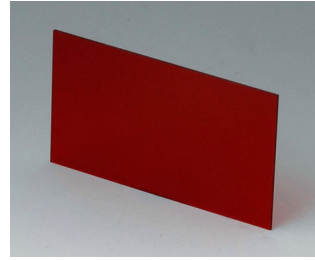
CAJAS DE ARMAZÓN



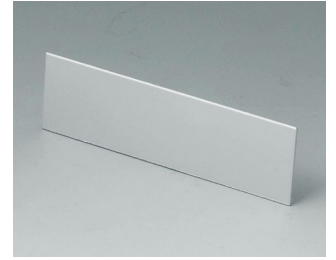
A9108113
Front / rear panel V, O 155
Acrylic glass
red transparent
81,9x23,6x1mm



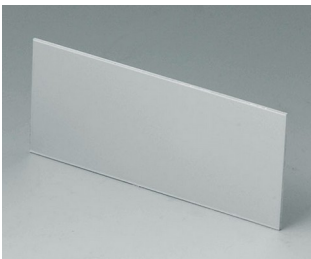
A9108123
Front / rear panel V, O 155
Acrylic glass
red transparent
81,9x35,6x1mm



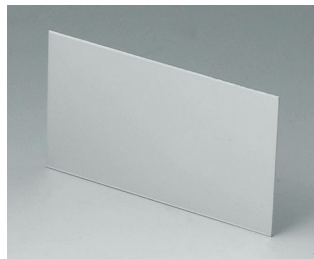
A9108223
Front / rear panel V, O 155
Acrylic glass
red transparent
81,9x47,6x1mm



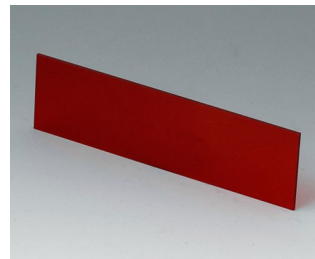
A9109111
Front / rear panel V, O 155
Aluminium
matt anodised
81,9x23,6x1mm



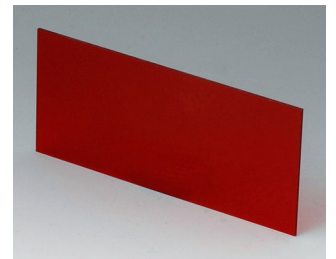
A9109121
Front / rear panel V, O 155
Aluminium
matt anodised
81,9x35,6x1mm



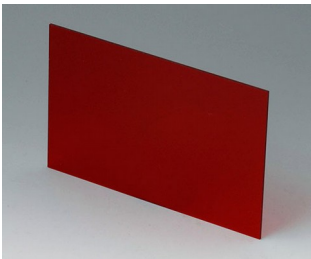
A9109221
Front / rear panel V, O 155
Aluminium
matt anodised
81,9x47,6x1mm



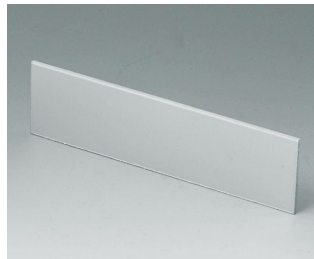
A9113113
Front / rear panel V, O 190
Acrylic glass
red transparent
124,2x33,6x1,5mm



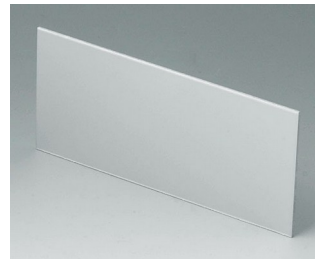
A9113123
Front / rear panel V, O 190
Acrylic glass
red transparent
124,2x56,6x1,5mm



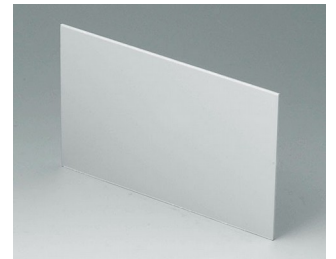
A9113223
Front / rear panel V, O 190
Acrylic glass
red transparent
124,2x79,6x1,5mm



A9114111
Front / rear panel V, O 190
Aluminium
matt anodised
124,2x33,6x1,5mm

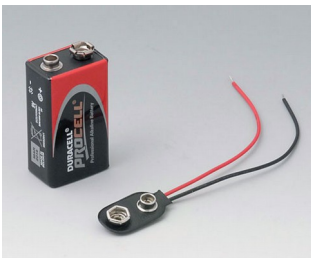


A9114121
Front / rear panel V, O 190
Aluminium
matt anodised
124,2x56,6x1,5mm



A9114221
Front / rear panel V, O 190
Aluminium
matt anodised
124,2x79,6x1,5mm

Accessory "battery"



A9160003
Plug-in contact, 1 x 9 V (PP3)



A9190013
Set of battery clips, 4 x AA
Steel
nickel-plated



A9190014
Set of battery clips, 2 x AA
Steel
nickel-plated



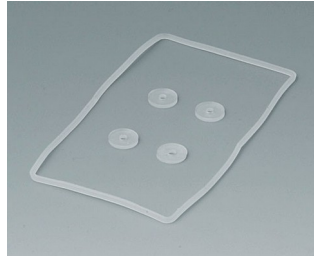
A9250250
Battery spacer
PE foam
50x25x4mm

CAJAS DE ARMAZÓN

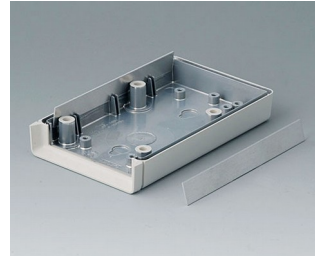
Accessory "protection"



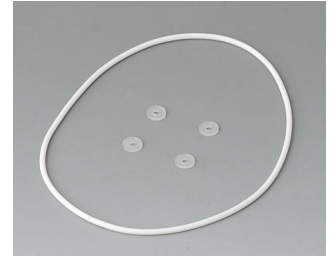
A9104073
Contact-strips V, G 85
Aluminium



A9104250
Sealing kit G 85



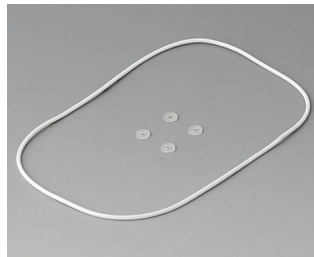
A9106095
Contact-strips V, G 110
Aluminium



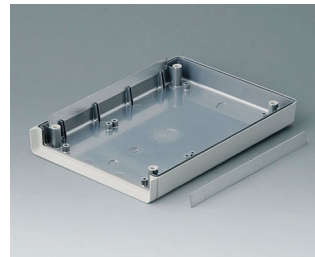
A9106352
Sealing kit G 110



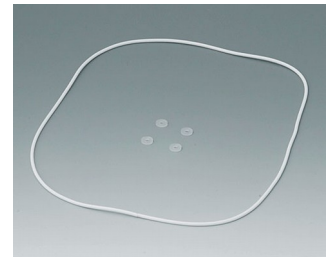
A9108120
Contact-strips V, O, G 155
Aluminium



A9108486
Sealing kit G 155



A9113150
Contact-strips V, O, G 190
Aluminium



A9113630
Sealing kit G 190

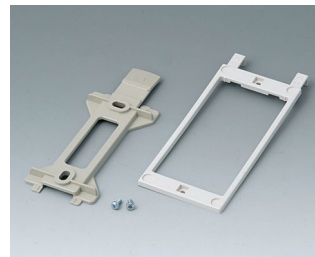
Accessory "wall/holder"



A9204108
Wall mounting brackets
PA 6
pebble grey RAL 7032



B1350048
Wall suspension elements
ABS (UL 94 HB)
pebble grey RAL 7032



B1360048
Wall suspension elements
ABS (UL 94 HB)
pebble grey RAL 7032

Accessory "carrying"



A9100001
Ring eyelet
PA 6
volcano



A9100002
Ring eyelet
PA 6
volcano



A9172107
Belt/Pocket clip
ABS (UL 94 HB)
off-white RAL 9002
62x30mm

CAJAS DE ARMAZÓN

Accessory "screws"



A0306031
Self-tapping screws 3 x 6 mm
(PZ1)

Accessory



A9207150
Anti-slide feet 6.5 x 2 mm
transparent



A9210290
Anti-slide feet 9.5 x 3.8 mm
transparent



A9250807
Tilt foot bar
ABS (UL 94 HB)
off-white RAL 9002



A9250817
Tilt foot bar
ABS (UL 94 HB)
off-white RAL 9002

Nos reservamos el derecho a realizar modificaciones técnicas. © OKW Gehäusesysteme, Buchen (Alemania).