

# RAILTEC C

## Cajas modulares para raíles DIN y soportes para PCBs

Amplia gama de cajas de rail DIN para montaje en raíles de estándar DIN EN 60715 como para montaje directo en paneles. La gama también incluye soportes/retenedores DIN abiertos para PCBs para componentes individual y otorgar más flexibilidad permitiendo un intercambio sencillo de interfaces.

- Todos los modelos están diseñados para garantizar la instalación sencilla de conexiones y PCBs.
- Materiales de propiedades excelentes para usos exigentes con gran resistencia a la temperatura (UL 94 V-0).
- Ensamblaje de las partes de la caja rápido y sencillo por simple presión.
- **RAILTEC C:** para bornas de conexión a PCB, bornas de conexión frontal enchufables y conectores; marco opcional para posicionar PCBs adicionales; paneles frontales y tapas en diferentes versiones; anchura de 1 a 12 módulos; para raíles DIN EN 60715 TH35; colocación de las placas de circuito impreso en las 3 direcciones; adaptador para raíles TH15 y G32 (de 1 a 4 módulos) como accesorio.

Modelo I Parte frontal abierta, lateral de conexión con paso libre, sin ranuras de ventilación.

Modelo II Parte frontal abierta, lateral de conexión con paso libre, con ranuras de ventilación.

Modelo III Parte frontal abierta, lateral de conexión con prolongación de la pared de la caja, sin ranuras de ventilación.

Modelo IV Parte frontal cerrada, lateral de conexión con paso libre, sin ranuras de ventilación.

- **SOPORTE RAILTEC:** soportes para PCBs a carril DIN; diseño modular para montaje individual de componentes; para raíles DIN EN 60715 TH35, TH15 y G32.
- Categoría de protección < IP 40



# RAILTEC C

## Modificaciones específicas del cliente

¿Qué necesita en su producto personalizado? En caso necesario, le suministramos las cajas y botones giratorios listas para el montaje con todas las modificaciones y acabados precisos.

Opciones de productos para Railtec C



Mecanizado



Lacado



Impresión



Inscripción láser



Láminas decorativas



Confección y montaje

## Versiones



**B6700100**  
RAILTEC C, 1 module, Vers. I  
PC (UL 94 V-0)  
light grey  
17,5x90x58mm



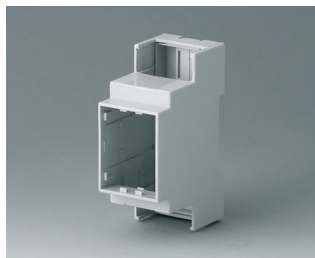
**B6700102**  
RAILTEC C, 1 module, Vers. II  
PC (UL 94 V-0)  
light grey  
17,5x90x58mm



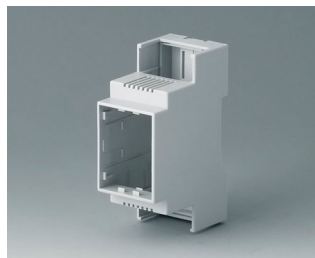
**B6700104**  
RAILTEC C, 1 module, Vers. III  
PC (UL 94 V-0)  
light grey  
17,5x90x58mm



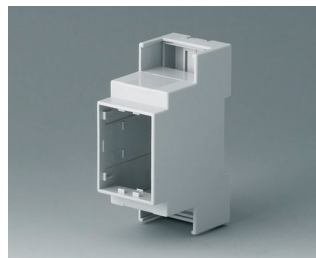
**B6700106**  
RAILTEC C, 1 module, Vers. IV  
PC (UL 94 V-0)  
light grey  
17,5x90x58mm



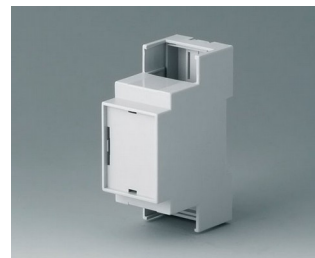
**B6701100**  
RAILTEC C, 2 modules, Vers. I  
PC (UL 94 V-0)  
light grey  
36x90x58mm



**B6701102**  
RAILTEC C, 2 modules, Vers. II  
PC (UL 94 V-0)  
light grey  
36x90x58mm

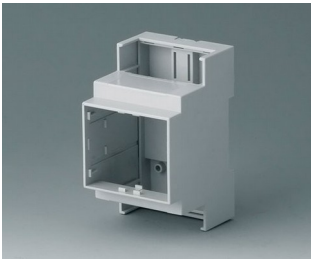


**B6701104**  
RAILTEC C, 2 modules, Vers. III  
PC (UL 94 V-0)  
light grey  
36x90x58mm

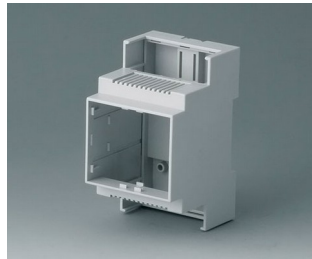


**B6701106**  
RAILTEC C, 2 modules, Vers. IV  
PC (UL 94 V-0)  
light grey  
36x90x58mm

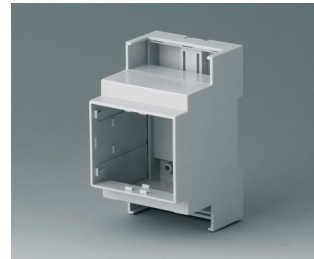
# RAILTEC C



**B6702100**  
 RAILTEC C, 3 modules, Vers. I  
 PC (UL 94 V-0)  
 light grey  
 53x90x58mm



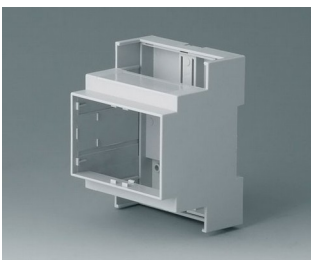
**B6702102**  
 RAILTEC C, 3 modules, Vers. II  
 PC (UL 94 V-0)  
 light grey  
 53x90x58mm



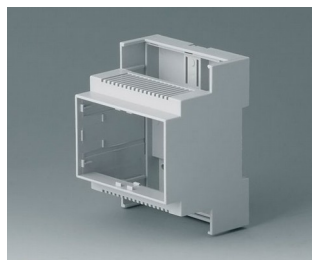
**B6702104**  
 RAILTEC C, 3 modules, Vers. III  
 PC (UL 94 V-0)  
 light grey  
 53x90x58mm



**B6702106**  
 RAILTEC C, 3 modules, Vers. IV  
 PC (UL 94 V-0)  
 light grey  
 53x90x58mm



**B6703100**  
 RAILTEC C, 4 modules, Vers. I  
 PC (UL 94 V-0)  
 light grey  
 71x90x58mm



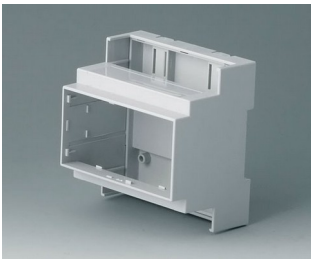
**B6703102**  
 RAILTEC C, 4 modules, Vers. II  
 PC (UL 94 V-0)  
 light grey  
 71x90x58mm



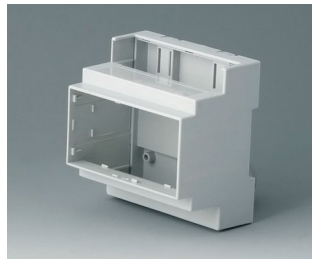
**B6703104**  
 RAILTEC C, 4 modules, Vers. III  
 PC (UL 94 V-0)  
 light grey  
 71x90x58mm



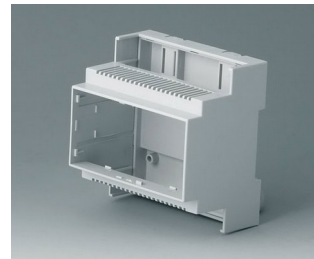
**B6703106**  
 RAILTEC C, 4 modules, Vers. IV  
 PC (UL 94 V-0)  
 light grey  
 71x90x58mm



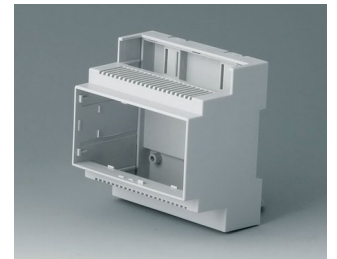
**B6704100**  
 RAILTEC C, 5 modules, Vers. I  
 PC (UL 94 V-0)  
 light grey  
 88x90x58mm



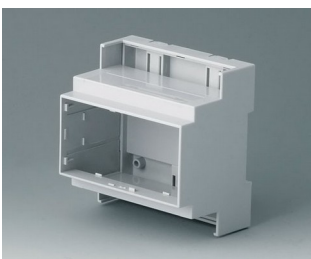
**B6704101**  
 RAILTEC C, 5 modules, Vers. I  
 PC (UL 94 V-0)  
 light grey  
 88x90x58mm



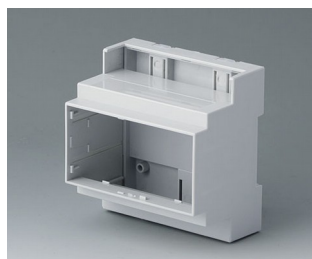
**B6704102**  
 RAILTEC C, 5 modules, Vers. II  
 PC (UL 94 V-0)  
 light grey  
 88x90x58mm



**B6704103**  
 RAILTEC C, 5 modules, Vers. II  
 PC (UL 94 V-0)  
 light grey  
 88x90x58mm



**B6704104**  
 RAILTEC C, 5 modules, Vers. III  
 PC (UL 94 V-0)  
 light grey  
 88x90x58mm



**B6704105**  
 RAILTEC C, 5 modules, Vers. III  
 PC (UL 94 V-0)  
 light grey  
 88x90x58mm

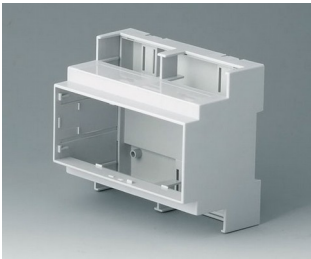


**B6704106**  
 RAILTEC C, 5 modules, Vers. IV  
 PC (UL 94 V-0)  
 light grey  
 88x90x58mm

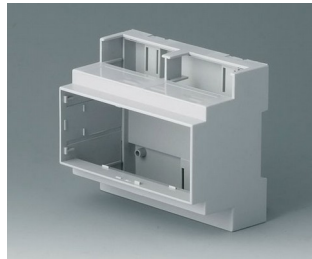


**B6704107**  
 RAILTEC C, 5 modules, Vers. IV  
 PC (UL 94 V-0)  
 light grey  
 88x90x58mm

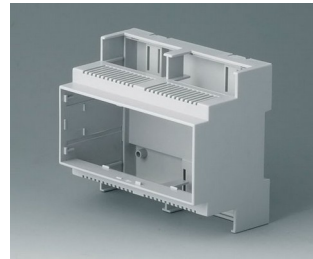
# RAILTEC C



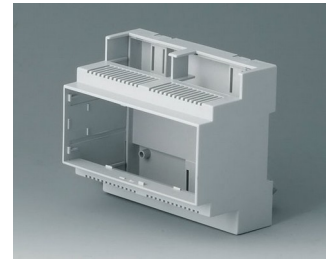
**B6705100**  
RAILTEC C, 6 modules, Vers. I  
PC (UL 94 V-0)  
light grey  
106x90x58mm



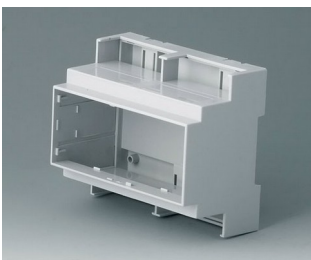
**B6705101**  
RAILTEC C, 6 modules, Vers. I  
PC (UL 94 V-0)  
light grey  
106x90x58mm



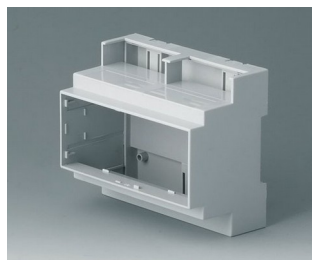
**B6705102**  
RAILTEC C, 6 modules, Vers. II  
PC (UL 94 V-0)  
light grey  
106x90x58mm



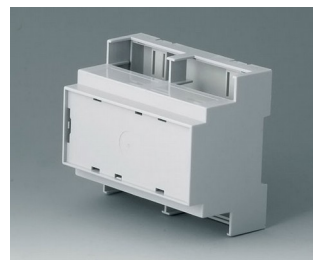
**B6705103**  
RAILTEC C, 6 modules, Vers. II  
PC (UL 94 V-0)  
light grey  
106x90x58mm



**B6705104**  
RAILTEC C, 6 modules, Vers. III  
PC (UL 94 V-0)  
light grey  
106x90x58mm



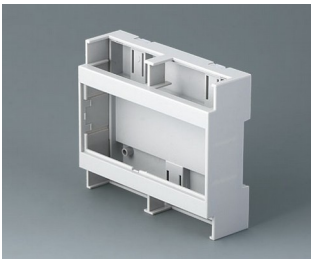
**B6705105**  
RAILTEC C, 6 modules, Vers. III  
PC (UL 94 V-0)  
light grey  
106x90x58mm



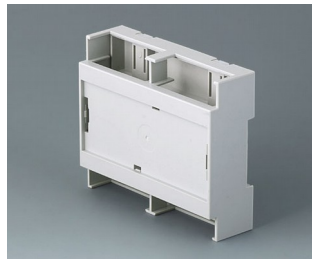
**B6705106**  
RAILTEC C, 6 modules, Vers. IV  
PC (UL 94 V-0)  
light grey  
106x90x58mm



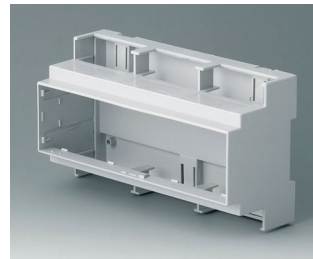
**B6705107**  
RAILTEC C, 6 modules, Vers. IV  
PC (UL 94 V-0)  
light grey  
106x90x58mm



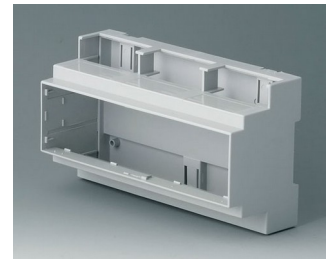
**B6705800**  
RAILTEC C, 6 modules, flat,  
Vers. I  
PC (UL 94 V-0)  
light grey  
106,2x90x32mm



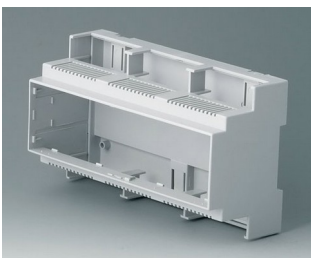
**B6705806**  
RAILTEC C, 6 modules, flat,  
Vers. IV  
PC (UL 94 V-0)  
light grey  
106,2x90x32mm



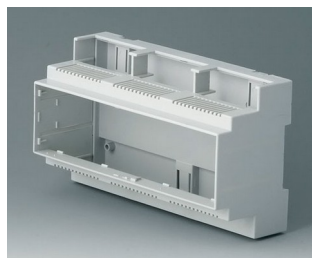
**B6706100**  
RAILTEC C, 9 modules, Vers. I  
PC (UL 94 V-0)  
light grey  
160x90x58mm



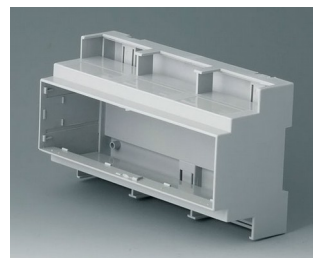
**B6706101**  
RAILTEC C, 9 modules, Vers. I  
PC (UL 94 V-0)  
light grey  
160x90x58mm



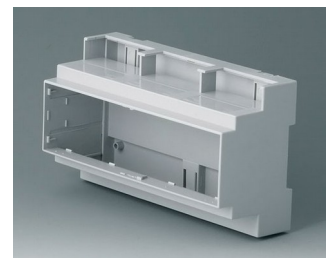
**B6706102**  
RAILTEC C, 9 modules, Vers. II  
PC (UL 94 V-0)  
light grey  
160x90x58mm



**B6706103**  
RAILTEC C, 9 modules, Vers. II  
PC (UL 94 V-0)  
light grey  
160x90x58mm

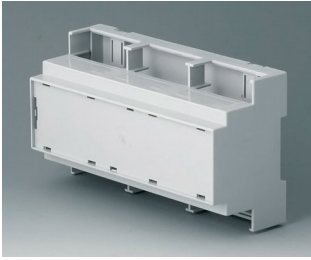


**B6706104**  
RAILTEC C, 9 modules, Vers. III  
PC (UL 94 V-0)  
light grey  
160x90x58mm

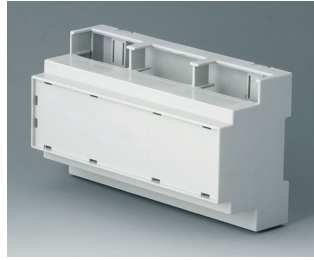


**B6706105**  
RAILTEC C, 9 modules, Vers. III  
PC (UL 94 V-0)  
light grey  
160x90x58mm

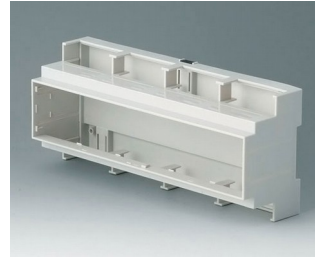
# RAILTEC C



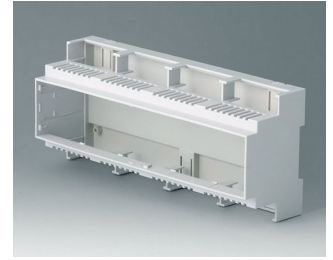
**B6706106**  
 RAILTEC C, 9 modules, Vers. IV  
 PC (UL 94 V-0)  
 light grey  
 160x90x58mm



**B6706107**  
 RAILTEC C, 9 modules, Vers. IV  
 PC (UL 94 V-0)  
 light grey  
 160x90x58mm



**B6707100**  
 RAILTEC C, 12 modules, Vers. I  
 PC (UL 94 V-0)  
 light grey  
 210x90x58mm



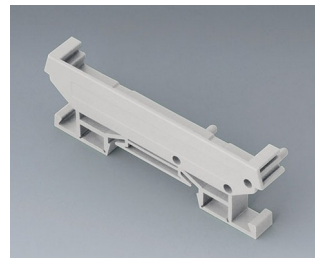
**B6707102**  
 RAILTEC C, 12 modules, Vers. II  
 PC (UL 94 V-0)  
 light grey  
 210x90x58mm



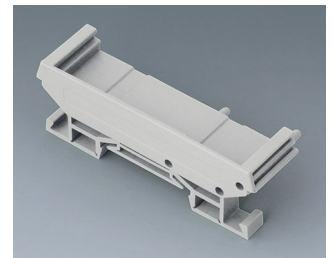
**B6724333**  
 RAILTEC SUP. 72, end section  
 PA 6 (30) (UL 94 V-0)  
 light grey  
 82x11,2x16mm



**B6724334**  
 RAILTEC SUP. 72, end section  
 PA 6 (30) (UL 94 V-0)  
 light grey  
 82x22,2x16mm



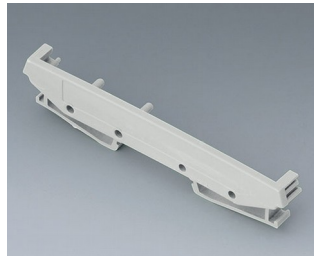
**B6724335**  
 RAILTEC SUP. 72, end section  
 with foot  
 PA 6 (30) (UL 94 V-0)  
 light grey  
 82x11,2x22,5mm



**B6724336**  
 RAILTEC SUP. 72, end section  
 with foot  
 PA 6 (30) (UL 94 V-0)  
 light grey  
 82x22,2x22,5mm



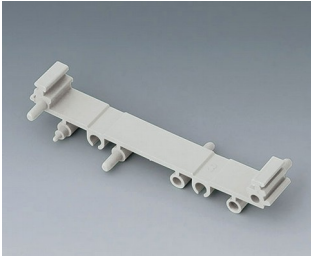
**B6724444**  
 RAILTEC SUP. 107, end section  
 PA 6 (30) (UL 94 V-0)  
 light grey  
 118x11,5x17,5mm



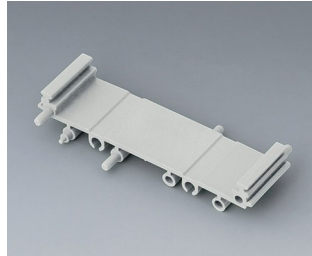
**B6724445**  
 RAILTEC SUP. 107, end section  
 with foot  
 PA 6 (30) (UL 94 V-0)  
 light grey  
 118x11,5x27,5mm

# RAILTEC C

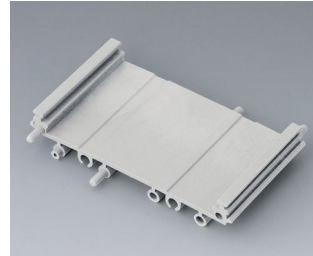
## System components to complete



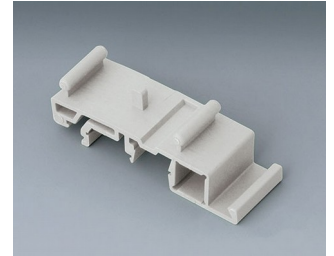
**B6724330**  
RAILTEC SUP. 72, intermediate part  
PA 6 (30) (UL 94 V-0)  
light grey  
82x11,25x16mm



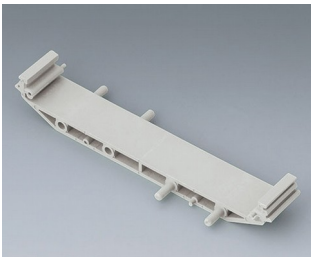
**B6724331**  
RAILTEC SUP. 72, intermediate part  
PA 6 (30) (UL 94 V-0)  
light grey  
82x22,5x16mm



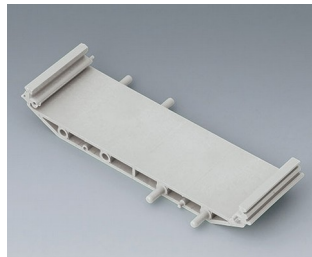
**B6724332**  
RAILTEC SUP. 72, intermediate part  
PA 6 (30) (UL 94 V-0)  
light grey  
82x45x16mm



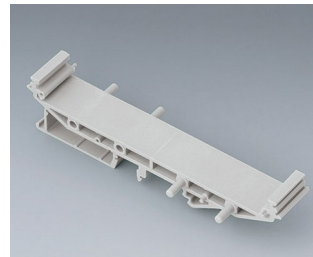
**B6724337**  
RAILTEC SUP. 72, foot  
PA 6 (30) (UL 94 V-0)  
light grey



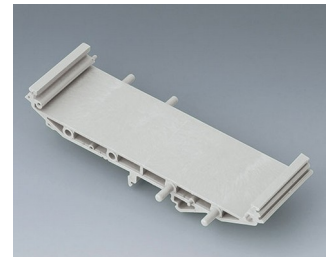
**B6724440**  
RAILTEC SUP. 107, intermediate part  
PA 6 (30) (UL 94 V-0)  
light grey  
118x18,5x17,5mm



**B6724441**  
RAILTEC SUP. 107, intermediate part  
PA 6 (30) (UL 94 V-0)  
light grey  
118x35x17,5mm

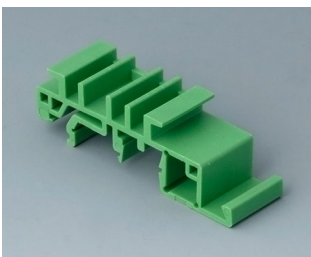


**B6724442**  
RAILTEC SUP. 107, intermediate p. + foot  
PA 6 (30) (UL 94 V-0)  
light grey  
118x18,5x27,5mm



**B6724443**  
RAILTEC SUP. 107, intermediate p. + foot  
PA 6 (30) (UL 94 V-0)  
light grey  
118x35x27,5mm

## Accessory "wall/holder"



**B6811542**  
Adapter  
PA 6 (UL 94 V-0)  
green



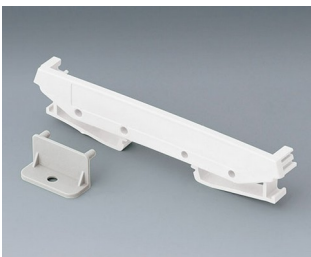
**B6824532**  
Wall suspension element for SUP. 72  
PA 6 (30) (UL 94 V-0)  
light grey



**B6824533**  
Wall suspension element with foot, SUP. 72  
PA 6 (30) (UL 94 V-0)  
light grey



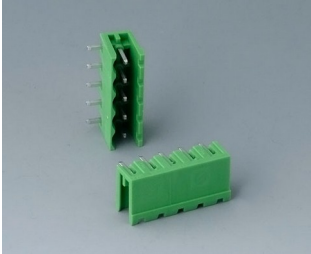
**B6824542**  
Wall suspension element for SUP. 107  
PA 6 (30) (UL 94 V-0)  
light grey



**B6824543**  
Wall suspension element with foot, SUP. 107  
PA 6 (30) (UL 94 V-0)  
light grey

# RAILTEC C

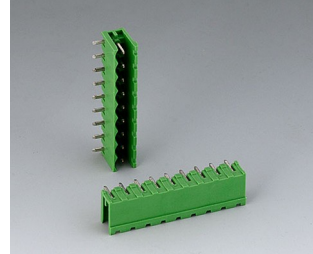
## Accessory "terminals"



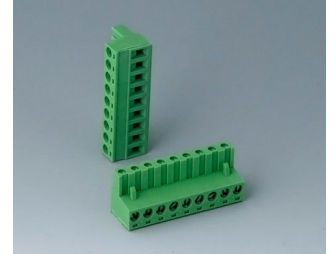
**B6601222**  
Plug header, block 5.08  
PA 6 (UL 94 V-0)



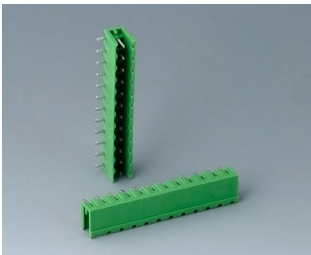
**B6601223**  
Plug header, block 5.08  
PA 6 (UL 94 V-0)



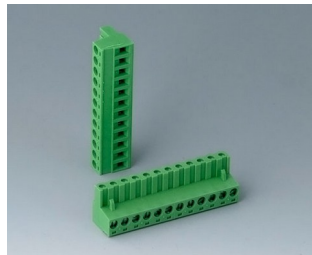
**B6602222**  
Plug header, block 5.08  
PA 6 (UL 94 V-0)



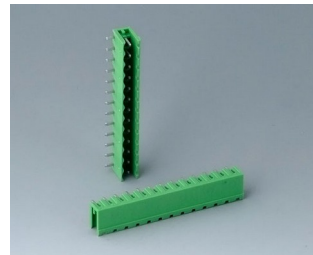
**B6602223**  
Plug header, block 5.08  
PA 6 (UL 94 V-0)



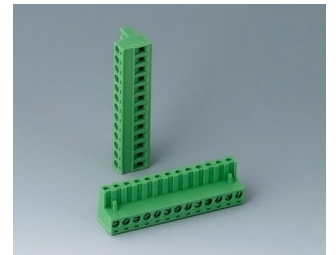
**B6603222**  
Plug header, block 5.08  
PA 6 (UL 94 V-0)



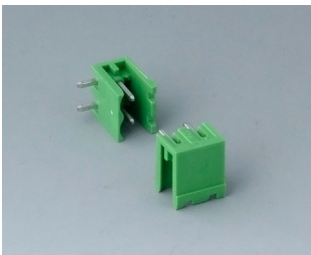
**B6603223**  
Plug header, block 5.08  
PA 6 (UL 94 V-0)



**B6605222**  
Plug header, block 5.08  
PA 6 (UL 94 V-0)



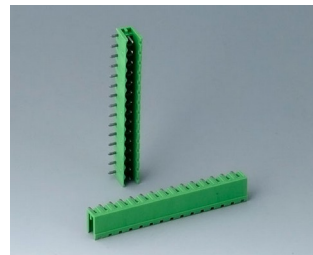
**B6605223**  
Plug header, block 5.08  
PA 6 (UL 94 V-0)



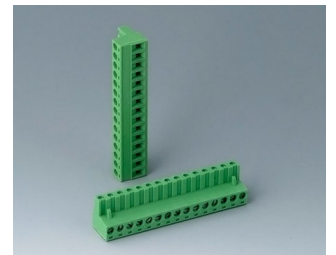
**B6606222**  
Plug header, block 5.08  
PA 6 (UL 94 V-0)



**B6606223**  
Plug header, block 5.08  
PA 6 (UL 94 V-0)



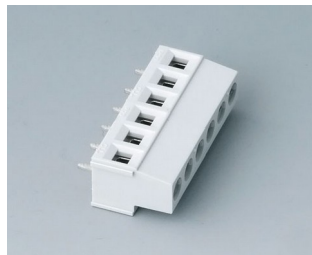
**B6607222**  
Plug header, block 5.08  
PA 6 (UL 94 V-0)



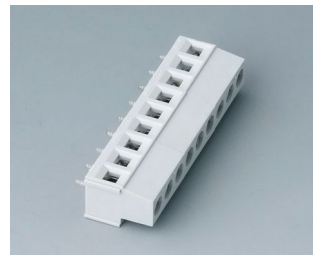
**B6607223**  
Plug header, block 5.08  
PA 6 (UL 94 V-0)



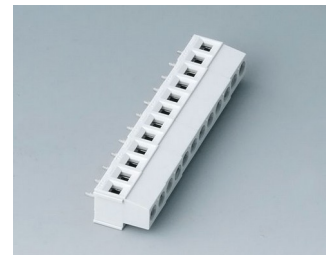
**B6800650**  
Terminal block, block 5.08  
PA 68 (UL 94 V-0)  
light grey



**B6801650**  
Terminal block, block 5.08  
PA 68 (UL 94 V-0)  
light grey

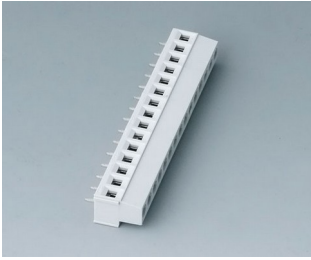


**B6802650**  
Terminal block, block 5.08  
PA 68 (UL 94 V-0)  
light grey



**B6803650**  
Terminal block, block 5.08  
PA 68 (UL 94 V-0)  
light grey

# RAILTEC C



**B6804650**  
Terminal block, block 5.08  
PA 68 (UL 94 V-0)  
light grey

## Accessory "terminal guards"



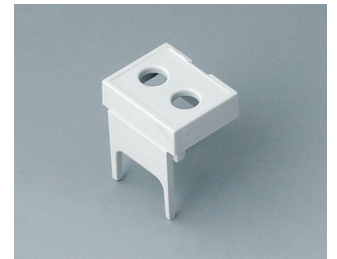
**B6800111**  
Terminal guards, closed  
PC (UL 94 V-0)  
light grey



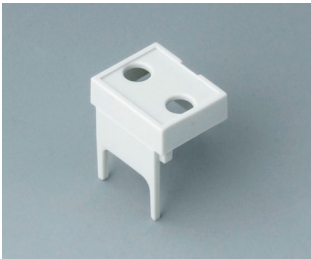
**B6800112**  
Terminal guards, perforated,  
5.08  
PC (UL 94 V-0)  
light grey



**B6800113**  
Terminal guards, with holes, 5.08  
PC (UL 94 V-0)  
light grey



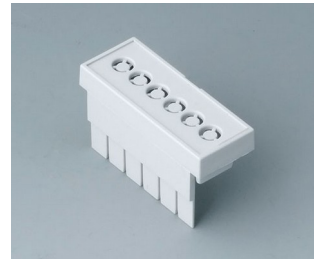
**B6800114**  
Terminal guards, with holes, 7.5  
& 7.62  
PC (UL 94 V-0)  
light grey



**B6800115**  
Terminal guards, with holes,  
10.16  
PC (UL 94 V-0)  
light grey



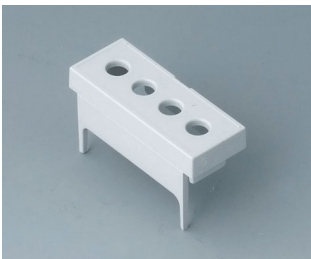
**B6801111**  
Terminal guards, closed  
PC (UL 94 V-0)  
light grey



**B6801112**  
Terminal guards, perforated,  
5.08  
PC (UL 94 V-0)  
light grey



**B6801113**  
Terminal guards, with holes, 5.08  
PC (UL 94 V-0)  
light grey



**B6801114**  
Terminal guards, with holes, 7.5  
& 7.62  
PC (UL 94 V-0)  
light grey



**B6801115**  
Terminal guards, with holes,  
10.16  
PC (UL 94 V-0)  
light grey



**B6802111**  
Terminal guards, closed  
PC (UL 94 V-0)  
light grey



**B6802112**  
Terminal guards, perforated,  
5.08  
PC (UL 94 V-0)  
light grey



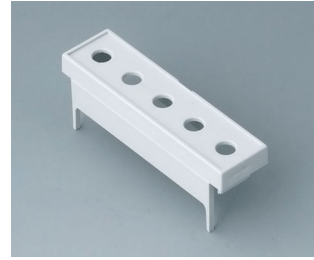
# RAILTEC C



**B6802113**  
 Terminal guards, with holes, 5.08  
 PC (UL 94 V-0)  
 light grey



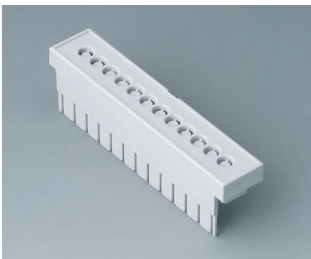
**B6802114**  
 Terminal guards, with holes, 7.5  
 & 7.62  
 PC (UL 94 V-0)  
 light grey



**B6802115**  
 Terminal guards, with holes,  
 10.16  
 PC (UL 94 V-0)  
 light grey



**B6803111**  
 Terminal guards, closed  
 PC (UL 94 V-0)  
 light grey



**B6803112**  
 Terminal guards, perforated,  
 5.08  
 PC (UL 94 V-0)  
 light grey



**B6803113**  
 Terminal guards, with holes, 5.08  
 PC (UL 94 V-0)  
 light grey



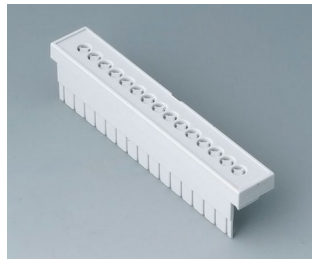
**B6803114**  
 Terminal guards, with holes, 7.5  
 & 7.62  
 PC (UL 94 V-0)  
 light grey



**B6803115**  
 Terminal guards, with holes,  
 10.16  
 PC (UL 94 V-0)  
 light grey



**B6804111**  
 Terminal guards, closed  
 PC (UL 94 V-0)  
 light grey



**B6804112**  
 Terminal guards, perforated,  
 5.08  
 PC (UL 94 V-0)  
 light grey



**B6804113**  
 Terminal guards, with holes, 5.08  
 PC (UL 94 V-0)  
 light grey



**B6804114**  
 Terminal guards, with holes, 7.5  
 & 7.62  
 PC (UL 94 V-0)  
 light grey



**B6804115**  
 Terminal guards, with holes,  
 10.16  
 PC (UL 94 V-0)  
 light grey

# RAILTEC C

## Accessory



**B6800100**  
Front panel, 1 module  
PC (UL 94 V-0)  
light grey  
14x42mm



**B6800200**  
Front panel, 1 module  
PC (UL 94 V-0)  
transparent  
14x42mm



**B6801100**  
Front panel, 2 modules  
PC (UL 94 V-0)  
light grey  
32x42mm



**B6801200**  
Front panel, 2 modules  
PC (UL 94 V-0)  
transparent  
32x42mm



**B6802100**  
Front panel, 3 modules  
PC (UL 94 V-0)  
light grey  
49x42mm



**B6802200**  
Front panel, 3 modules  
PC (UL 94 V-0)  
transparent  
49x42mm



**B6803100**  
Front panel, 4 modules  
PC (UL 94 V-0)  
light grey  
67x42mm



**B6803200**  
Front panel, 4 modules  
PC (UL 94 V-0)  
transparent  
67x42mm



**B6804100**  
Front panel, 5 modules  
PC (UL 94 V-0)  
light grey  
84x42mm



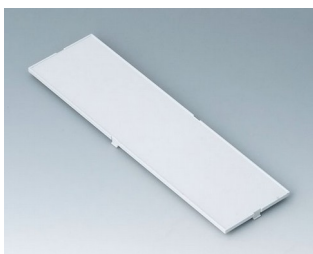
**B6804200**  
Front panel, 5 modules  
PC (UL 94 V-0)  
transparent  
84x42mm



**B6805100**  
Front panel, 6 modules  
PC (UL 94 V-0)  
light grey  
102x42mm



**B6805200**  
Front panel, 6 modules  
PC (UL 94 V-0)  
transparent  
102x42mm



**B6806100**  
Front panel, 9 modules  
PC (UL 94 V-0)  
light grey  
155x42mm



**B6806200**  
Front panel, 9 modules  
PC (UL 94 V-0)  
transparent  
155x42mm



**B6807100**  
Front panel, 12 modules  
PC (UL 94 V-0)  
light grey  
207,5x42mm