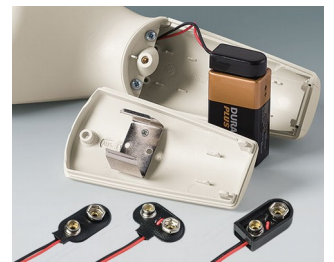
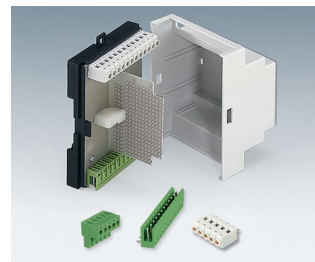
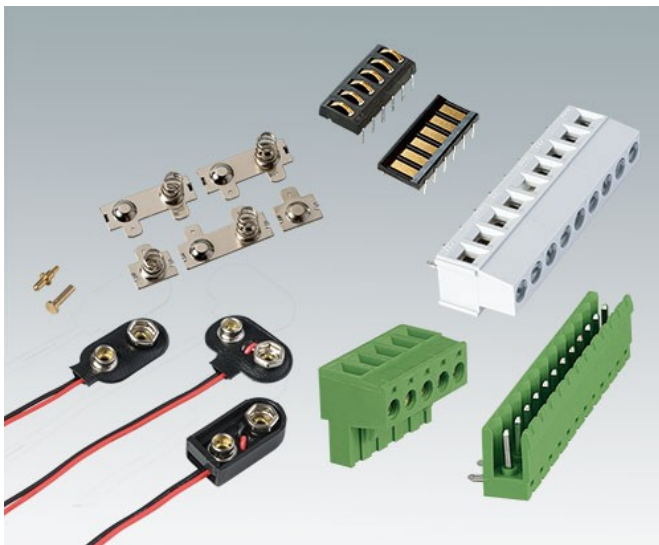
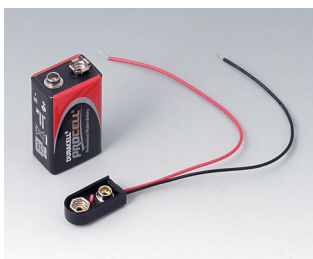


# CONTACTOS, CONEXIONES

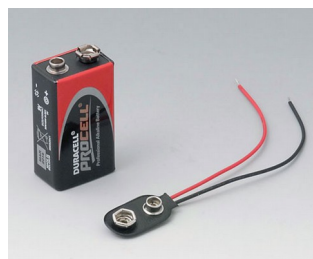
- Ofrecemos una gama de contactos para la transmisión inalámbrica de energía y de datos. Las superficies doradas son altamente conductoras y resistentes a la corrosión, garantizando así una conexión segura y fiable entre los dispositivos y la estación base/soporte.
- La gama de OKW ya incluye cajas, bases y soportes con aberturas pre-moldeadas para el montaje de estos contactos. De esta forma, el usuario puede cargar las pilas/baterías en el dispositivo y transmitir datos de forma inalámbrica, ¡lo que resulta ideal para dispositivos móviles de comunicación!.
- Gran variedad de contacto para pilas/baterías adecuadas para cajas de OKW.
- Gran selección de regletas de bornes y regletas de clavijas.



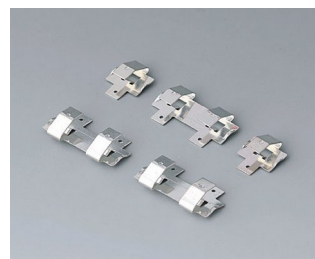
## Versiones



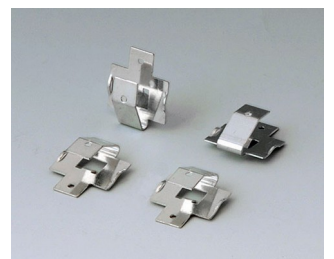
**A9156002**  
Plug-in contact, 1 x 9 V (PP3)



**A9160003**  
Plug-in contact, 1 x 9 V (PP3)



**A9161001**  
Set of battery clips, 4 x AA  
Steel  
tin-plated



**A9161002**  
Set of battery clips, 2 x 9 V or 4 x AA  
Steel  
tin-plated

# CONTACTOS, CONEXIONES



**A9174006**  
Set of battery clips, 1 x 9 V  
Steel  
tin-plated



**A9190002**  
Set of battery clips,  
2xN/2xAA/2xAAA  
Steel  
tin-plated



**A9190003**  
Set of battery clips,  
2xN/2xAA/2xAAA  
Steel  
nickel-plated



**A9190010**  
Set of battery clips, 4 x AA  
Steel  
nickel-plated



**A9190011**  
Set of battery clips, 2 x AA  
Steel  
nickel-plated



**A9190012**  
Set of battery clips, 4 x AA  
Steel  
nickel-plated



**A9190013**  
Set of battery clips, 4 x AA  
Steel  
nickel-plated



**A9190014**  
Set of battery clips, 2 x AA  
Steel  
nickel-plated



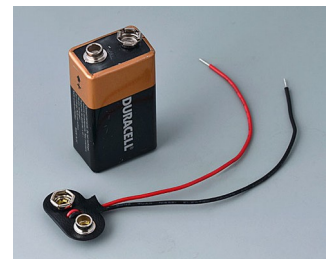
**A9190015**  
Set of battery clips, 2 x AA  
Steel  
nickel-plated



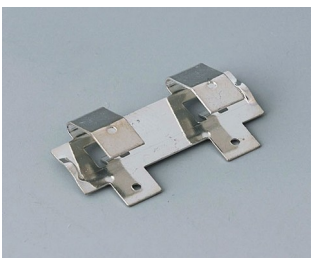
**A9190023**  
Set of battery clips, 3 x AA  
Steel  
nickel-plated



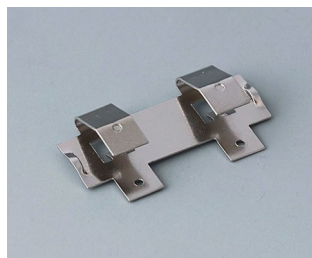
**A9190024**  
Set of battery clips, 3 x AAA  
Steel  
nickel-plated



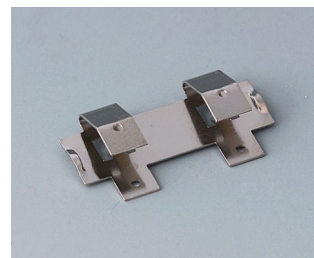
**A9193002**  
Plug-in contacts, 1 x 9 V (PP3)



**A9193003**  
Battery-clips, double contact  
Steel  
tin-plated



**A9193005**  
Battery clips, double contact  
Steel  
nickel-plated



**A9193008**  
Battery clips, double contact  
CuBe  
nickel-plated



**A9193013**  
Battery-clips, double contact  
Steel  
nickel-plated

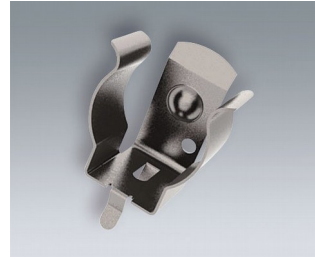
# CONTACTOS, CONEXIONES



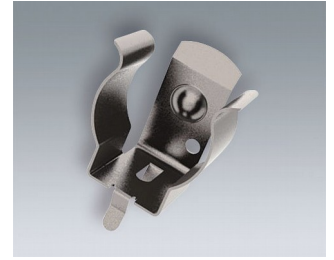
**A9193014**  
Battery-clips, double contact  
Steel  
nickel-plated



**A9193030**  
Contact pin  
gold-plated



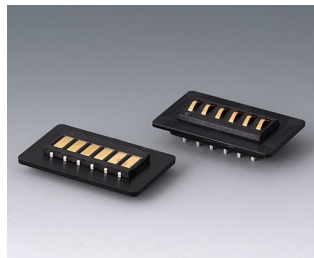
**A9193035**  
Battery clip, AA  
Steel  
nickel-plated



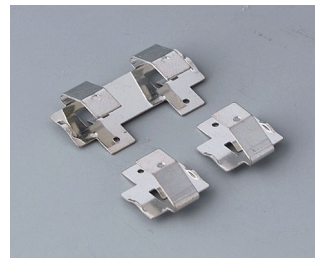
**A9193036**  
Battery clip, AAA  
Steel  
nickel-plated



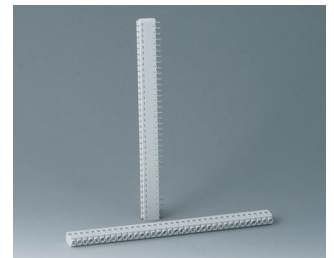
**A9193042**  
Mounting plates for contacts  
ABS (UL 94 HB)  
black RAL 9005



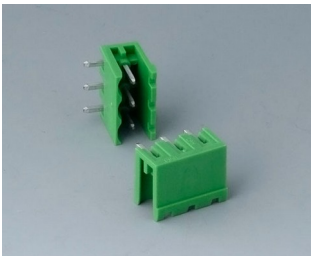
**A9193044**  
Contacting kit, 6-pin  
ABS (UL 94 HB)  
black RAL 9005



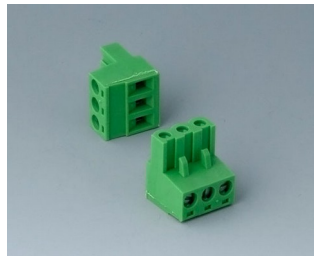
**A9194001**  
Set of battery clips, 2 x AA  
Steel  
tin-plated



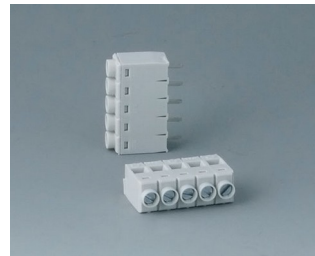
**B6600111**  
Terminal block, block 5.0  
PA 68 (UL 94 V-0)  
light grey



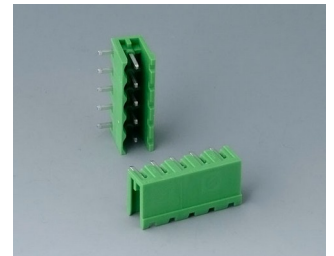
**B6600222**  
Plug header, block 5.08  
PA 68 (UL 94 V-0)



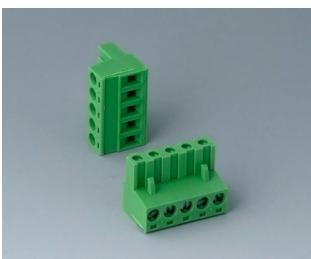
**B6600223**  
Plug header, block 5.08  
PA 68 (UL 94 V-0)



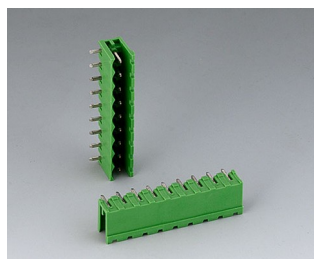
**B6601111**  
Terminal block, block 5.0  
PA 68 (UL 94 V-0)



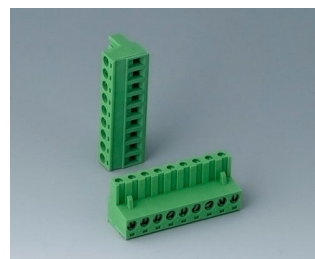
**B6601222**  
Plug header, block 5.08  
PA 6 (UL 94 V-0)



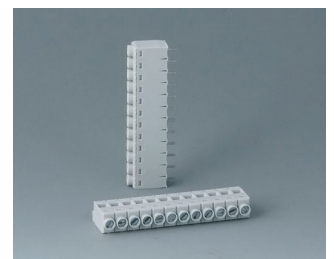
**B6601223**  
Plug header, block 5.08  
PA 6 (UL 94 V-0)



**B6602222**  
Plug header, block 5.08  
PA 6 (UL 94 V-0)

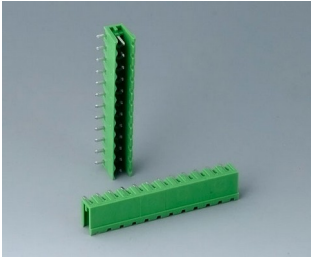


**B6602223**  
Plug header, block 5.08  
PA 6 (UL 94 V-0)

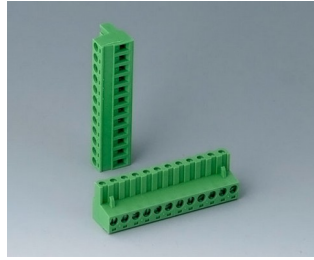


**B6603111**  
Terminal block, block 5.0  
PA 68 (UL 94 V-0)

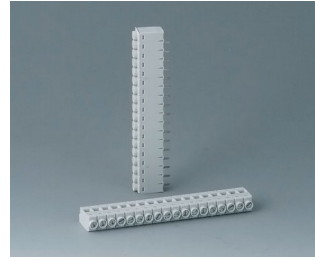
# CONTACTOS, CONEXIONES



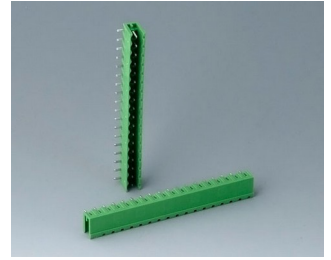
**B6603222**  
 Plug header, block 5.08  
 PA 6 (UL 94 V-0)



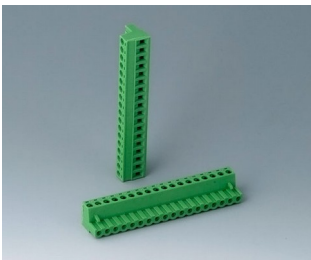
**B6603223**  
 Plug header, block 5.08  
 PA 6 (UL 94 V-0)



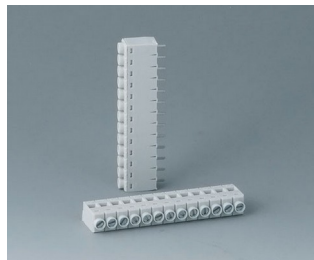
**B6604111**  
 Terminal block, block 5.0  
 PA 68 (UL 94 V-0)



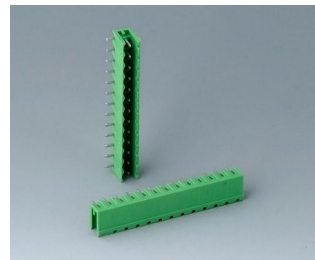
**B6604222**  
 Plug header, block 5.08  
 PA 68 (UL 94 V-0)



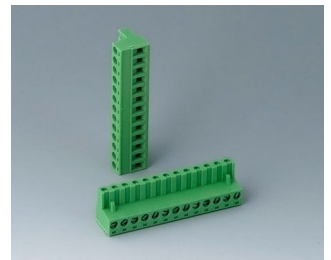
**B6604223**  
 Plug header, block 5.08  
 PA 68 (UL 94 V-0)



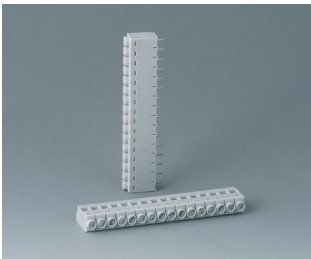
**B6605111**  
 Terminal block, block 5.0  
 PA 68 (UL 94 V-0)



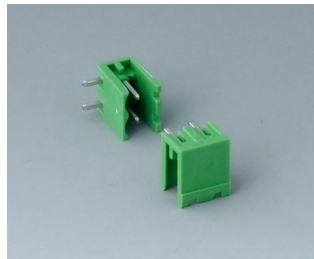
**B6605222**  
 Plug header, block 5.08  
 PA 6 (UL 94 V-0)



**B6605223**  
 Plug header, block 5.08  
 PA 6 (UL 94 V-0)



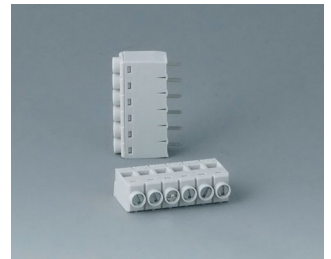
**B6606111**  
 Terminal block, block 5.0  
 PA 68 (UL 94 V-0)



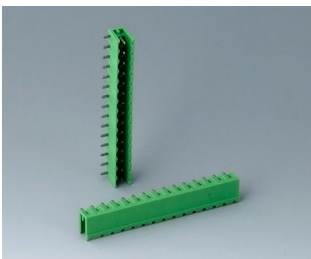
**B6606222**  
 Plug header, block 5.08  
 PA 6 (UL 94 V-0)



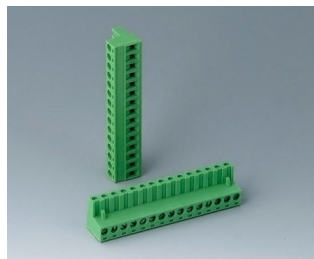
**B6606223**  
 Plug header, block 5.08  
 PA 6 (UL 94 V-0)



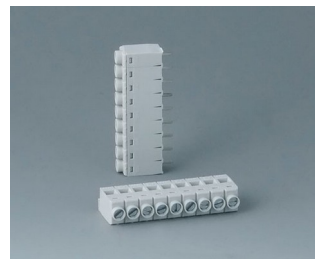
**B6607111**  
 Terminal block, block 5.0  
 PA 68 (UL 94 V-0)



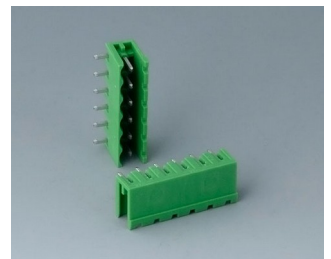
**B6607222**  
 Plug header, block 5.08  
 PA 6 (UL 94 V-0)



**B6607223**  
 Plug header, block 5.08  
 PA 6 (UL 94 V-0)

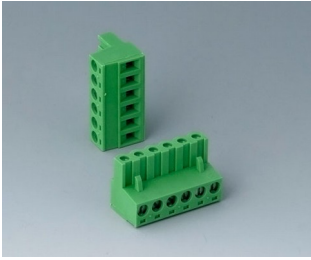


**B6608111**  
 Terminal block, block 5.0  
 PA 68 (UL 94 V-0)



**B6608222**  
 Plug header, block 5.08  
 PA 68 (UL 94 V-0)

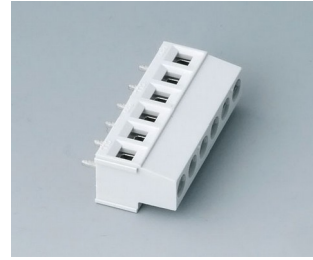
# CONTACTOS, CONEXIONES



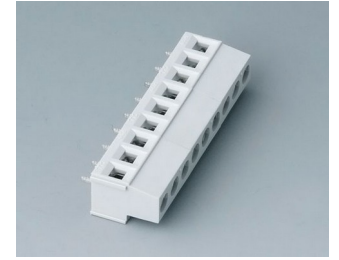
**B6608223**  
Plug header, block 5.08  
PA 68 (UL 94 V-0)



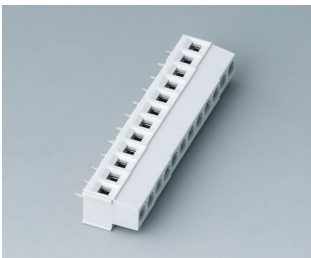
**B6800650**  
Terminal block, block 5.08  
PA 68 (UL 94 V-0)  
light grey



**B6801650**  
Terminal block, block 5.08  
PA 68 (UL 94 V-0)  
light grey



**B6802650**  
Terminal block, block 5.08  
PA 68 (UL 94 V-0)  
light grey

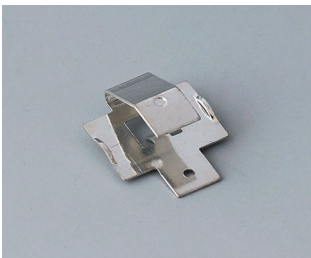


**B6803650**  
Terminal block, block 5.08  
PA 68 (UL 94 V-0)  
light grey

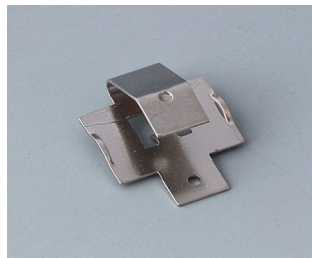


**B6804650**  
Terminal block, block 5.08  
PA 68 (UL 94 V-0)  
light grey

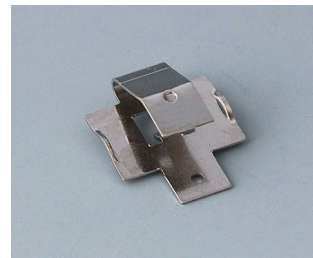
## System components to complete



**A9193004**  
Battery-clips, single contact  
Steel  
tin-plated



**A9193006**  
Battery-clips, single contact  
Steel  
nickel-plated



**A9193009**  
Battery clips, single contact  
CuBe  
nickel-plated



**A9193011**  
Battery-clips, single contact  
Steel  
nickel-plated



**A9193012**  
Battery-clips, single contact  
Steel  
nickel-plated

# CONTACTOS, CONEXIONES

## Accessory to complete

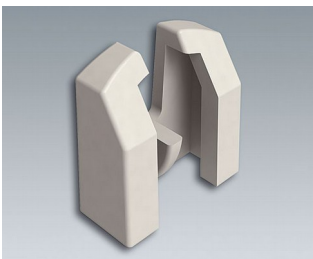


**A9193031**  
Spring contact  
gold-plated



**A9193032**  
Spring contact

## Accessory "battery"

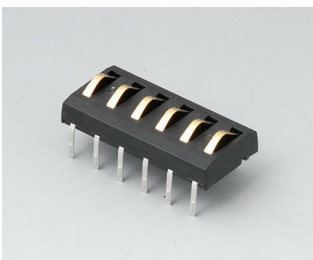


**A9193033**  
Polarity reversal protection  
device, positive terminal AA  
ABS (UL 94 HB)  
off-white RAL 9002

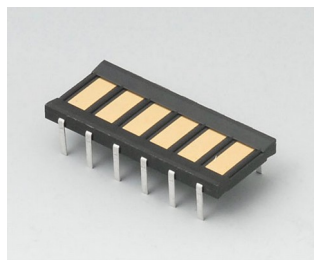


**A9193034**  
Polarity reversal protection  
device, positive terminal AAA  
ABS (UL 94 HB)  
off-white RAL 9002

## Accessory



**A9178007**  
Contacts, male  
gold-plated



**A9178008**  
Contacts, female  
gold-plated

Nos reservamos el derecho a realizar modificaciones técnicas. © OKW Gehäusesysteme, Buchen (Alemania).