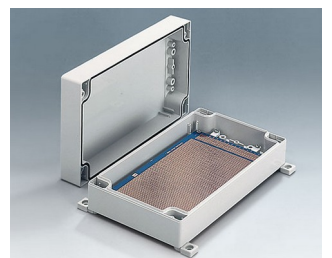
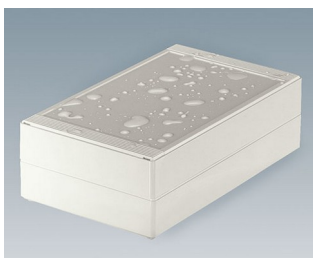
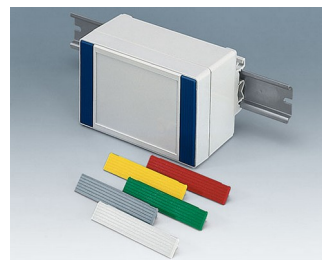
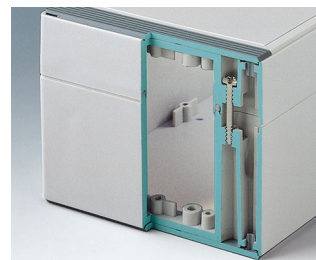
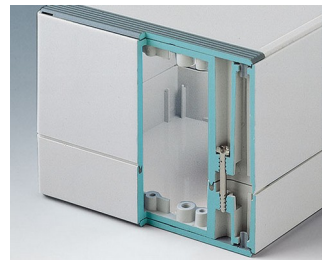


ROBUST-BOX

Sistema duale di contenitori con IP 66

Nella linea ROBUST-BOX entrambe le metà dei contenitori sono dotate di filetti preformati. Pertanto siete voi, in qualità di utilizzatori, a decidere se usare come parte inferiore la metà piatta o quella rialzata.

- Vasta scelta con 11 misure di base, altezze diverse e 2 materiali standard
- ABS (UL 94 HB), di provata validità come contenitore per il montaggio di morsetti
- PC (UL 94 HB), contenitore solido e robusto in grado di resistere a forti sollecitazioni e a temperature elevate
- Utilizzabile come contenitore da scrivania, a muro o su guide DIN
- Facilità di montaggio; le singole metà del contenitore 'maschio e femmina' possono essere impiegate indifferentemente come parte superiore o inferiore
- Superficie di comando incavata a protezione della tastiera a membrana
- Fissaggio del coperchio al di fuori dell'area di tenuta e assicurato da viti imperdibili in acciaio inox
- Montaggio a muro diretto o mediante linguette di fissaggio esterne
- Pellicole di copertura colorate per la codifica (in alternativa alle versioni standard di colore grigio chiaro)
- Punti di fissaggio per schede e componenti di montaggio
- Numerosi accessori: piedini, cerniera, elementi di fissaggio alle guide DIN, supporto per schede per l'inserimento di moduli premontati ecc.



ROBUST-BOX

Esempi di applicazione

- Impianti elettrici, ad es. nella tecnica di riscaldamento, condizionamento e ventilazione per apparecchi di controllo e di monitoraggio, nella realizzazione di sistemi di controllo e di impianti e dei sistemi di sicurezza.
- Ma è utilizzabile anche in ambito elettronico, ad es. come contenitore per tastiera, unità di controllo, sensori in interni ecc.



Fill level measurement in process technology



Humidity and temperature measuring unit



Measuring, regulating and metering unit for water quality



Portable metal detector



Robust monitoring systems



Sensor for air pollution



Stationary gas detection system

Modifiche specifiche del cliente

Che caratteristiche deve avere il vostro prodotto personalizzato? Su richiesta vi forniamo i contenitori e manopole pronti per il montaggio e con tutte le modifiche e le caratteristiche specifiche.

Opzioni prodotto per Robust-Box



Lavorazione meccanica



Verniciatura



Stampa



Marcatura laser



Pellicole decorative



Materiale speciale



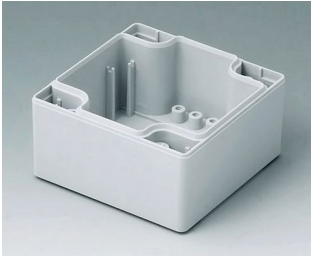
Protezione CEM



Confezionamento /
montaggio

ROBUST-BOX

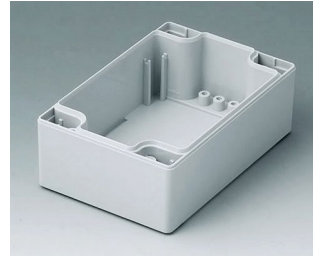
Versioni



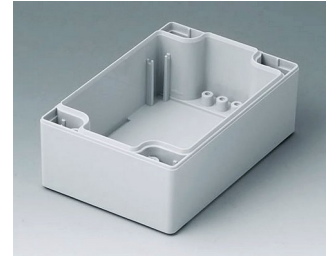
C1080801
Case shell 80, with tongue
ABS (UL 94 HB)
light grey RAL 7035
80x80x40mm



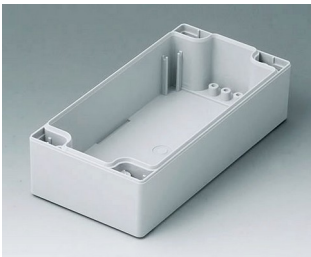
C1080802
Case shell 80, with tongue
PC (UL 94 HB)
light grey RAL 7035
80x80x40mm



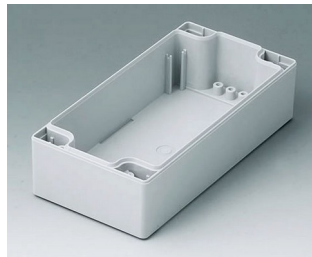
C1081201
Case shell 80, with tongue
ABS (UL 94 HB)
light grey RAL 7035
120x80x40mm



C1081202
Case shell 80, with tongue
PC (UL 94 HB)
light grey RAL 7035
120x80x40mm



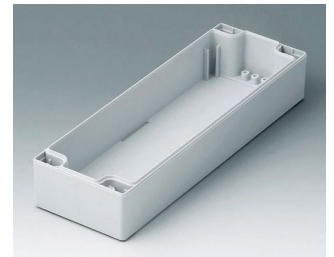
C1081601
Case shell 80, with tongue
ABS (UL 94 HB)
light grey RAL 7035
160x80x40mm



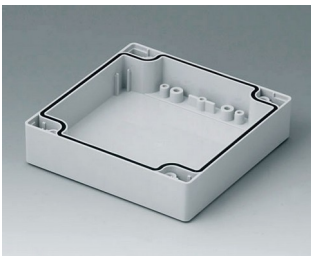
C1081602
Case shell 80, with tongue
PC (UL 94 HB)
light grey RAL 7035
160x80x40mm



C1082401
Case shell 80, with tongue
ABS (UL 94 HB)
light grey RAL 7035
240x80x40mm



C1082402
Case shell 80, with tongue
PC (UL 94 HB)
light grey RAL 7035
240x80x40mm



C1121201
Case shell 120, with groove
ABS (UL 94 HB)
light grey RAL 7035
120x120x30mm



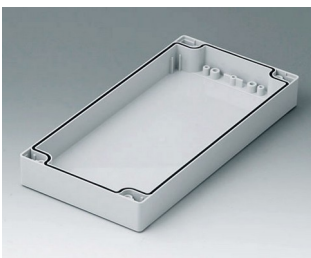
C1121202
Case shell 120, with groove
PC (UL 94 HB)
light grey RAL 7035
120x120x30mm



C1122001
Case shell 120, with groove
ABS (UL 94 HB)
light grey RAL 7035
200x120x30mm



C1122002
Case shell 120, with groove
PC (UL 94 HB)
light grey RAL 7035
200x120x30mm



C1122401
Case shell 120, with groove
ABS (UL 94 HB)
light grey RAL 7035
240x120x30mm



C1122402
Case shell 120, with groove
PC (UL 94 HB)
light grey RAL 7035
240x120x30mm



C1161601
Case shell 160, with groove
ABS (UL 94 HB)
light grey RAL 7035
160x160x30mm



C1161602
Case shell 160, with groove
PC (UL 94 HB)
light grey RAL 7035
160x160x30mm

ROBUST-BOX



C1162401
 Case shell 160, with groove
 ABS (UL 94 HB)
 light grey RAL 7035
 240x160x30mm



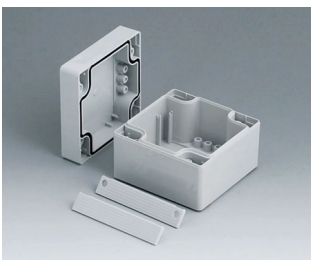
C1162402
 Case shell 160, with groove
 PC (UL 94 HB)
 light grey RAL 7035
 240x160x30mm



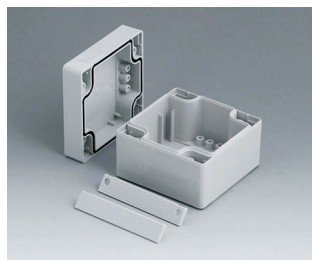
C1203001
 Case shell 200, with tongue
 ABS (UL 94 HB)
 light grey RAL 7035
 300x200x40mm



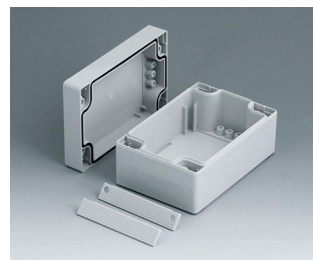
C1243601
 Case shell 240, with tongue
 ABS (UL 94 HB)
 light grey RAL 7035
 360x240x40mm



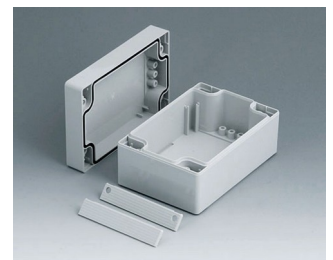
C2008081
 ROBUST-BOX WIDTH 80, Vers.
 I
 ABS (UL 94 HB)
 light grey RAL 7035
 80x80x60mm
 IP 66



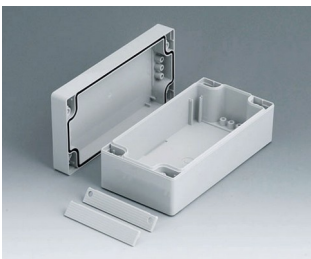
C2008082
 ROBUST-BOX WIDTH 80, Vers.
 II
 PC (UL 94 HB)
 light grey RAL 7035
 80x80x60mm
 IP 66



C2008121
 ROBUST-BOX WIDTH 80, Vers.
 I
 ABS (UL 94 HB)
 light grey RAL 7035
 120x80x60mm
 IP 66



C2008122
 ROBUST-BOX WIDTH 80, Vers.
 II
 PC (UL 94 HB)
 light grey RAL 7035
 120x80x60mm
 IP 66



C2008161
 ROBUST-BOX WIDTH 80, Vers.
 I
 ABS (UL 94 HB)
 light grey RAL 7035
 160x80x60mm
 IP 66



C2008162
 ROBUST-BOX WIDTH 80, Vers.
 II
 PC (UL 94 HB)
 light grey RAL 7035
 160x80x60mm
 IP 66



C2008241
 ROBUST-BOX WIDTH 80, Vers.
 I
 ABS (UL 94 HB)
 light grey RAL 7035
 240x80x60mm
 IP 66



C2008242
 ROBUST-BOX WIDTH 80, Vers.
 II
 PC (UL 94 HB)
 light grey RAL 7035
 240x80x60mm
 IP 66



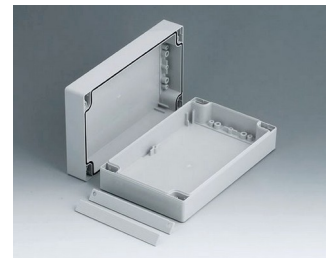
C2012121
 ROBUST-BOX WIDTH 120,
 Vers. I
 ABS (UL 94 HB)
 light grey RAL 7035
 120x120x60mm
 IP 66



C2012122
 ROBUST-BOX WIDTH 120,
 Vers. II
 PC (UL 94 HB)
 light grey RAL 7035
 120x120x60mm
 IP 66



C2012201
 ROBUST-BOX WIDTH 120,
 Vers. I
 ABS (UL 94 HB)
 light grey RAL 7035
 200x120x60mm
 IP 66



C2012202
 ROBUST-BOX WIDTH 120,
 Vers. II
 PC (UL 94 HB)
 light grey RAL 7035
 200x120x60mm
 IP 66

ROBUST-BOX



C2012241
ROBUST-BOX WIDTH 120,
Vers. I
ABS (UL 94 HB)
light grey RAL 7035
240x120x60mm
IP 66



C2012242
ROBUST-BOX WIDTH 120,
Vers. II
PC (UL 94 HB)
light grey RAL 7035
240x120x60mm
IP 66



C2016161
ROBUST-BOX WIDTH 160,
Vers. I
ABS (UL 94 HB)
light grey RAL 7035
160x160x60mm
IP 66



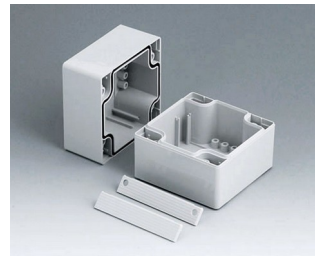
C2016162
ROBUST-BOX WIDTH 160,
Vers. II
PC (UL 94 HB)
light grey RAL 7035
160x160x60mm
IP 66



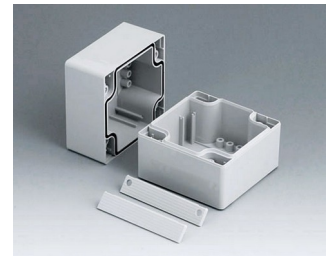
C2016241
ROBUST-BOX WIDTH 160,
Vers. I
ABS (UL 94 HB)
light grey RAL 7035
240x160x60mm
IP 66



C2016242
ROBUST-BOX WIDTH 160,
Vers. II
PC (UL 94 HB)
light grey RAL 7035
240x160x60mm
IP 66



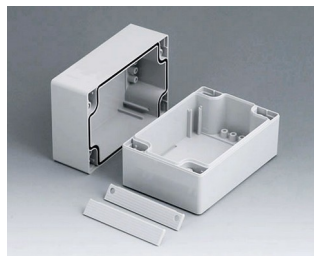
C2108081
ROBUST-BOX WIDTH 80, Vers.
I
ABS (UL 94 HB)
light grey RAL 7035
80x80x80mm
IP 66



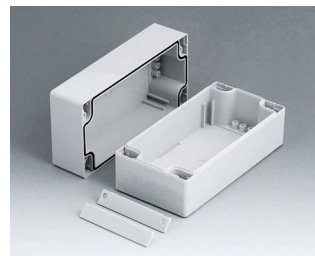
C2108082
ROBUST-BOX WIDTH 80, Vers.
II
PC (UL 94 HB)
light grey RAL 7035
80x80x80mm
IP 66



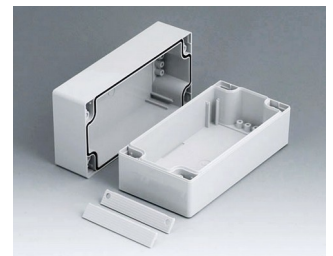
C2108121
ROBUST-BOX WIDTH 80, Vers.
I
ABS (UL 94 HB)
light grey RAL 7035
120x80x80mm
IP 66



C2108122
ROBUST-BOX WIDTH 80, Vers.
II
PC (UL 94 HB)
light grey RAL 7035
120x80x80mm
IP 66



C2108161
ROBUST-BOX WIDTH 80, Vers.
I
ABS (UL 94 HB)
light grey RAL 7035
160x80x80mm
IP 66



C2108162
ROBUST-BOX WIDTH 80, Vers.
II
PC (UL 94 HB)
light grey RAL 7035
160x80x80mm
IP 66



C2108241
ROBUST-BOX WIDTH 80, Vers.
I
ABS (UL 94 HB)
light grey RAL 7035
240x80x80mm
IP 66



C2108242
ROBUST-BOX WIDTH 80, Vers.
II
PC (UL 94 HB)
light grey RAL 7035
240x80x80mm
IP 66

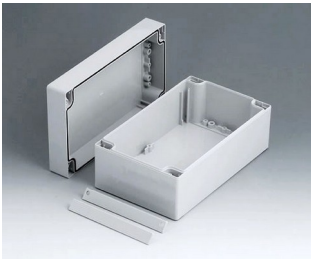


C2112121
ROBUST-BOX WIDTH 120,
Vers. I
ABS (UL 94 HB)
light grey RAL 7035
120x120x90mm
IP 66

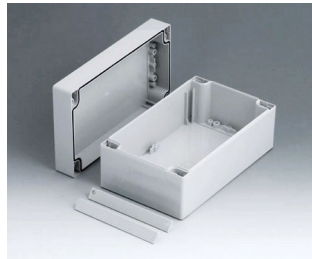


C2112122
ROBUST-BOX WIDTH 120,
Vers. II
PC (UL 94 HB)
light grey RAL 7035
120x120x90mm
IP 66

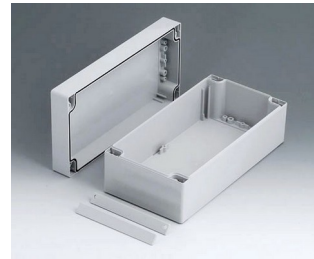
ROBUST-BOX



C2112201
 ROBUST-BOX WIDTH 120,
 Vers. I
 ABS (UL 94 HB)
 light grey RAL 7035
 200x120x90mm
 IP 66



C2112202
 ROBUST-BOX WIDTH 120,
 Vers. II
 PC (UL 94 HB)
 light grey RAL 7035
 200x120x90mm
 IP 66



C2112241
 ROBUST-BOX WIDTH 120,
 Vers. I
 ABS (UL 94 HB)
 light grey RAL 7035
 240x120x90mm
 IP 66



C2112242
 ROBUST-BOX WIDTH 120,
 Vers. II
 PC (UL 94 HB)
 light grey RAL 7035
 240x120x90mm
 IP 66



C2116161
 ROBUST-BOX WIDTH 160,
 Vers. I
 ABS (UL 94 HB)
 light grey RAL 7035
 160x160x90mm
 IP 66



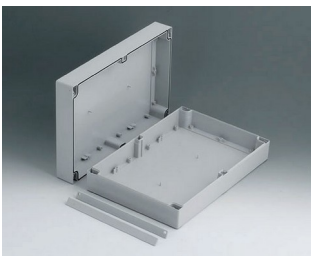
C2116162
 ROBUST-BOX WIDTH 160,
 Vers. II
 PC (UL 94 HB)
 light grey RAL 7035
 160x160x90mm
 IP 66



C2116241
 ROBUST-BOX WIDTH 160,
 Vers. I
 ABS (UL 94 HB)
 light grey RAL 7035
 240x160x90mm
 IP 66



C2116242
 ROBUST-BOX WIDTH 160,
 Vers. II
 PC (UL 94 HB)
 light grey RAL 7035
 240x160x90mm
 IP 66



C2120301
 ROBUST-BOX WIDTH 200,
 Vers. I
 ABS (UL 94 HB)
 light grey RAL 7035
 300x200x80mm
 IP 66



C2124361
 ROBUST-BOX WIDTH 240,
 Vers. I
 ABS (UL 94 HB)
 light grey RAL 7035
 360x240x80mm
 IP 66



C2416241
 ROBUST-BOX WIDTH 160,
 Vers. I
 ABS (UL 94 HB)
 light grey RAL 7035
 240x160x120mm
 IP 66



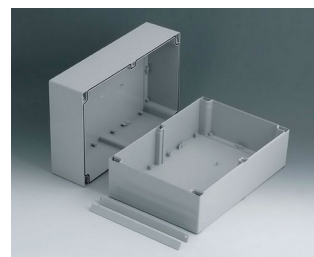
C2416242
 ROBUST-BOX WIDTH 160,
 Vers. II
 PC (UL 94 HB)
 light grey RAL 7035
 240x160x120mm
 IP 66



C2420301
 ROBUST-BOX WIDTH 200,
 Vers. I
 ABS (UL 94 HB)
 light grey RAL 7035
 300x200x120mm
 IP 66



C2424361
 ROBUST-BOX WIDTH 240,
 Vers. I
 ABS (UL 94 HB)
 light grey RAL 7035
 360x240x120mm
 IP 66



C2520301
 ROBUST-BOX WIDTH 200,
 Vers. I
 ABS (UL 94 HB)
 light grey RAL 7035
 300x200x160mm
 IP 66



C2524361
 ROBUST-BOX WIDTH 240,
 Vers. I
 ABS (UL 94 HB)
 light grey RAL 7035
 360x240x160mm
 IP 66

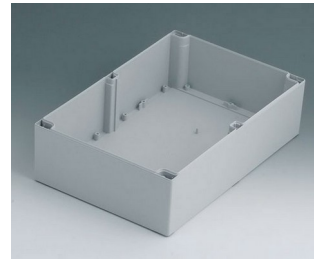
ROBUST-BOX



C3162401
Case shell 160, with groove
ABS (UL 94 HB)
light grey RAL 7035
240x160x60mm



C3162402
Case shell 160, with groove
PC (UL 94 HB)
light grey RAL 7035
240x160x60mm



C4203001
Case shell 200, with tongue
ABS (UL 94 HB)
light grey RAL 7035
300x200x80mm



C4243601
Case shell 240, with tongue
ABS (UL 94 HB)
light grey RAL 7035
360x240x80mm

System components to complete



C0080801
Case shell 80, with groove
ABS (UL 94 HB)
light grey RAL 7035
80x80x20mm



C0080802
Case shell 80, with groove
PC (UL 94 HB)
light grey RAL 7035
80x80x20mm



C0081201
Case shell 80, with groove
ABS (UL 94 HB)
light grey RAL 7035
120x80x20mm



C0081202
Case shell 80, with groove
PC (UL 94 HB)
light grey RAL 7035
120x80x20mm



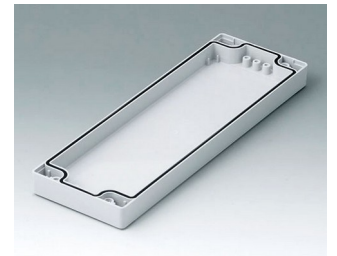
C0081601
Case shell 80, with groove
ABS (UL 94 HB)
light grey RAL 7035
160x80x20mm



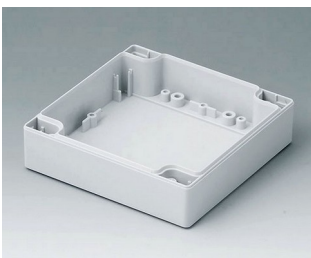
C0081602
Case shell 80, with groove
PC (UL 94 HB)
light grey RAL 7035
160x80x20mm



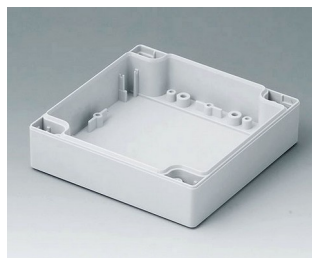
C0082401
Case shell 80, with groove
ABS (UL 94 HB)
light grey RAL 7035
240x80x20mm



C0082402
Case shell 80, with groove
PC (UL 94 HB)
light grey RAL 7035
240x80x20mm



C0121201
Case shell 120, with tongue
ABS (UL 94 HB)
light grey RAL 7035
120x120x30mm



C0121202
Case shell 120, with tongue
PC (UL 94 HB)
light grey RAL 7035
120x120x30mm



C0122001
Case shell 120, with tongue
ABS (UL 94 HB)
light grey RAL 7035
200x120x30mm

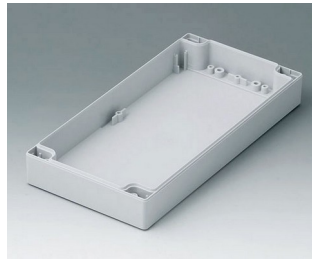


C0122002
Case shell 120, with tongue
PC (UL 94 HB)
light grey RAL 7035
200x120x30mm

ROBUST-BOX



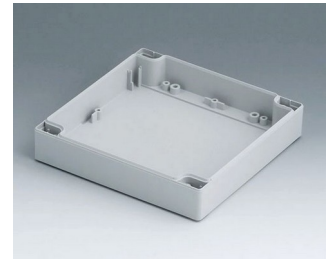
C0122401
Case shell 120, with tongue
ABS (UL 94 HB)
light grey RAL 7035
240x120x30mm



C0122402
Case shell 120, with tongue
PC (UL 94 HB)
light grey RAL 7035
240x120x30mm



C0161601
Case shell 160, with tongue
ABS (UL 94 HB)
light grey RAL 7035
160x160x30mm



C0161602
Case shell 160, with tongue
PC (UL 94 HB)
light grey RAL 7035
160x160x30mm



C0162401
Case shell 160, with tongue
ABS (UL 94 HB)
light grey RAL 7035
240x160x30mm



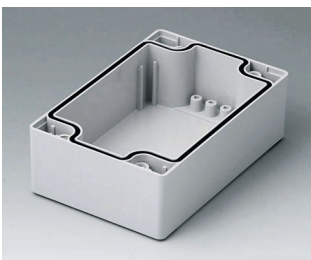
C0162402
Case shell 160, with tongue
PC (UL 94 HB)
light grey RAL 7035
240x160x30mm



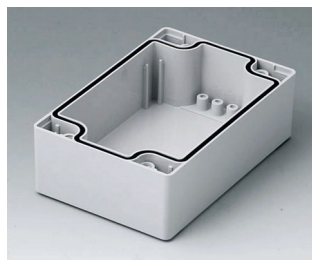
C2080801
Case shell 80, with groove
ABS (UL 94 HB)
light grey RAL 7035
80x80x40mm



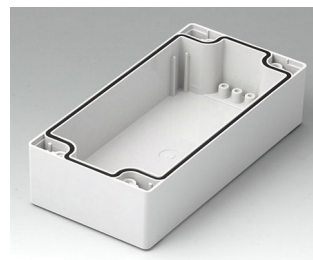
C2080802
Case shell 80, with groove
PC (UL 94 HB)
light grey RAL 7035
80x80x40mm



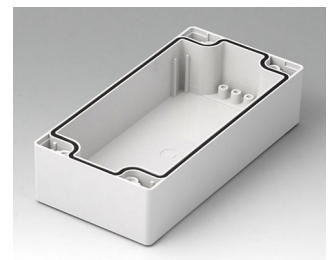
C2081201
Case shell 80, with groove
ABS (UL 94 HB)
light grey RAL 7035
120x80x40mm



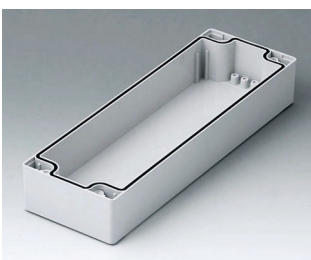
C2081202
Case shell 80, with groove
PC (UL 94 HB)
light grey RAL 7035
120x80x40mm



C2081601
Case shell 80, with groove
ABS (UL 94 HB)
light grey RAL 7035
160x80x40mm



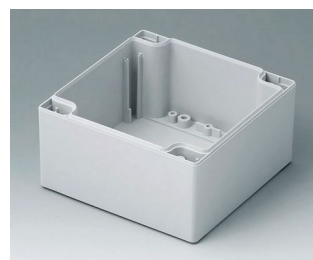
C2081602
Case shell 80, with groove
PC (UL 94 HB)
light grey RAL 7035
160x80x40mm



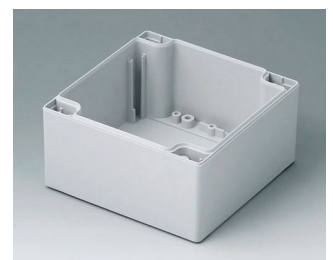
C2082401
Case shell 80, with groove
ABS (UL 94 HB)
light grey RAL 7035
240x80x40mm



C2082402
Case shell 80, with groove
PC (UL 94 HB)
light grey RAL 7035
240x80x40mm



C2121201
Case shell 120, with tongue
ABS (UL 94 HB)
light grey RAL 7035
120x120x60mm

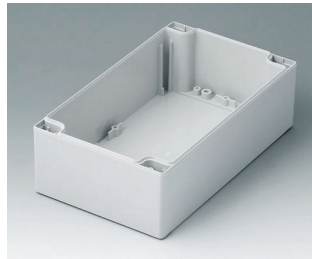


C2121202
Case shell 120, with tongue
PC (UL 94 HB)
light grey RAL 7035
120x120x60mm

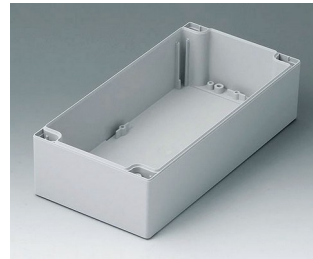
ROBUST-BOX



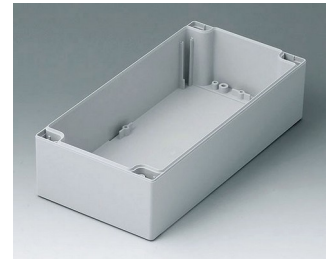
C2122001
 Case shell 120, with tongue
 ABS (UL 94 HB)
 light grey RAL 7035
 200x120x60mm



C2122002
 Case shell 120, with tongue
 PC (UL 94 HB)
 light grey RAL 7035
 200x120x60mm



C2122401
 Case shell 120, with tongue
 ABS (UL 94 HB)
 light grey RAL 7035
 240x120x60mm



C2122402
 Case shell 120, with tongue
 PC (UL 94 HB)
 light grey RAL 7035
 240x120x60mm



C2161601
 Case shell 160, with tongue
 ABS (UL 94 HB)
 light grey RAL 7035
 160x160x60mm



C2161602
 Case shell 160, with tongue
 PC (UL 94 HB)
 light grey RAL 7035
 160x160x60mm



C2162401
 Case shell 160, with tongue
 ABS (UL 94 HB)
 light grey RAL 7035
 240x160x60mm



C2162402
 Case shell 160, with tongue
 PC (UL 94 HB)
 light grey RAL 7035
 240x160x60mm



C2203001
 Case shell 200, with groove
 ABS (UL 94 HB)
 light grey RAL 7035
 300x200x40mm



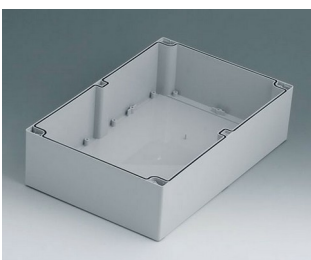
C2243601
 Case shell 240, with groove
 ABS (UL 94 HB)
 light grey RAL 7035
 360x240x40mm



C2299001
 Assembly kit



C2299002
 Assembly kit



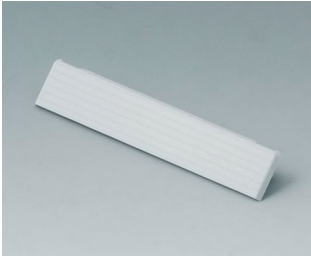
C5203001
 Case shell 200, with groove
 ABS (UL 94 HB)
 light grey RAL 7035
 300x200x80mm



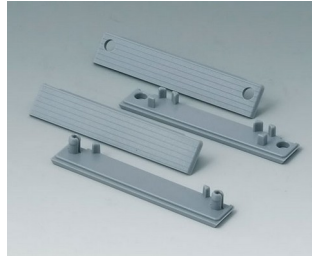
C5243601
 Case shell 240, with groove
 ABS (UL 94 HB)
 light grey RAL 7035
 360x240x80mm

ROBUST-BOX

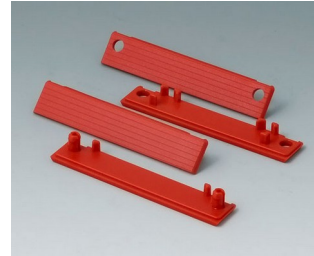
Accessory to complete



C2200801
Cover strips 80, without holes
PC (UL 94 HB)
light grey RAL 7035



C2201082
Cover strips 80
PC (UL 94 HB)
silver grey RAL 7001



C2201084
Cover strips 80
PC (UL 94 HB)
red RAL 3020



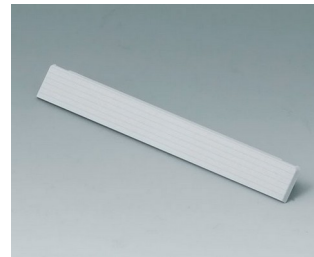
C2201085
Cover strips 80
PC (UL 94 HB)
yellow RAL 1023



C2201086
Cover strips 80
PC (UL 94 HB)
green RAL 6024



C2201087
Cover strips 80
PC (UL 94 HB)
blue RAL 5017



C2201201
Cover strips 120, without holes
PC (UL 94 HB)
light grey RAL 7035



C2201601
Cover strips 160, without holes
PC (UL 94 HB)
light grey RAL 7035



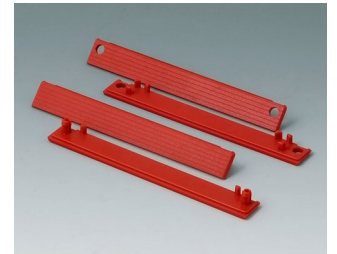
C2202001
Cover strips 200, without holes
PC (UL 94 HB)
light grey RAL 7035



C2202401
Cover strips 240, without holes
PC (UL 94 HB)
light grey RAL 7035



C2203123
Cover strips 120
PC (UL 94 HB)
silver grey RAL 7001



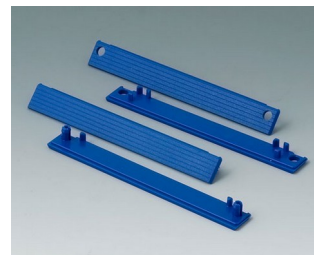
C2203124
Cover strips 120
PC (UL 94 HB)
red RAL 3020



C2203125
Cover strips 120
PC (UL 94 HB)
yellow RAL 1023



C2203126
Cover strips 120
PC (UL 94 HB)
green RAL 6024



C2203127
Cover strips 120
PC (UL 94 HB)
blue RAL 5017



C2204162
Cover strips 160
PC (UL 94 HB)
silver grey RAL 7001

ROBUST-BOX



C2204164
Cover strips 160
PC (UL 94 HB)
red RAL 3020



C2204165
Cover strips 160
PC (UL 94 HB)
yellow RAL 1023



C2204166
Cover strips 160
PC (UL 94 HB)
green RAL 6024



C2204167
Cover strips 160
PC (UL 94 HB)
blue RAL 5017



C2210801
Cover strips 80, with holes
PC (UL 94 HB)
light grey RAL 7035



C2211201
Cover strips 120, with holes
PC (UL 94 HB)
light grey RAL 7035



C2211601
Cover strips 160, with holes
PC (UL 94 HB)
light grey RAL 7035



C2212001
Cover strips 200, with holes
PC (UL 94 HB)
light grey RAL 7035



C2212401
Cover strips 240, with holes
PC (UL 94 HB)
light grey RAL 7035

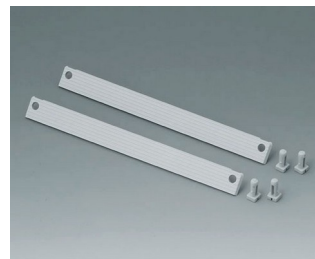
Accessory "protection"



C2299040
Security plug
PA 6 (UL 94 HB)
light grey RAL 7035



C2299042
Security kit width 120
PA 6 (UL 94 HB)
light grey RAL 7035



C2299046
Security kit width 160
PA 6 (UL 94 HB)
light grey RAL 7035



C2299048
Security kit width 80
PA 6 (UL 94 HB)
light grey RAL 7035

ROBUST-BOX



C2306917
 Pressure equalisation element
 M6x0.75
 PA 6 (UL 94 HB)
 light grey RAL 7035
 IP 56



C2310917
 Pressure equalisation element
 M10x1
 PA 6 (UL 94 HB)
 light grey RAL 7035
 IP 56

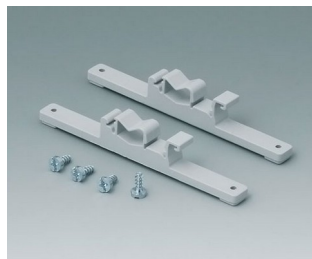


C2320137
 Cable grommet
 EPDM
 light grey RAL 7035
 IP 67

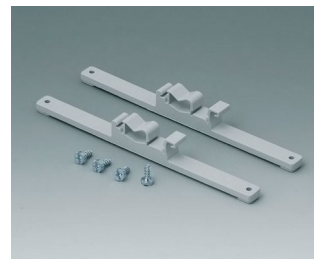
Accessory "wall/holder"



C2201088
 Fastening elements to DIN-Rails
 PA 6
 light grey RAL 7035



C2203128
 Fastening elements to DIN-Rails
 PA 6
 light grey RAL 7035



C2204168
 Fastening elements to DIN-Rails
 PA 6
 light grey RAL 7035



C2299028
 Wall mounting brackets
 PA 6 (UL 94 HB)
 light grey RAL 7035



C2299031
 Securing hinge for the cover
 PP
 natural-coloured



C2299088
 Hinge
 PA 6
 light grey RAL 7035

Accessory "screws"



A0306031
 Self-tapping screws 3 x 6 mm
 (PZ1)



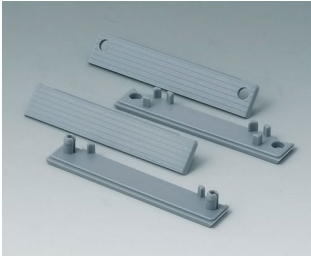
A0308031
 Self-tapping screws 3 x 8 mm
 (PZ1)



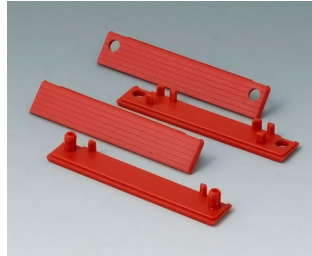
A0308132
 Self-tapping screw 3 x 8 mm
 (T10)
 Stainless steel

ROBUST-BOX

Accessory



C2201082
Cover strips 80
PC (UL 94 HB)
silver grey RAL 7001



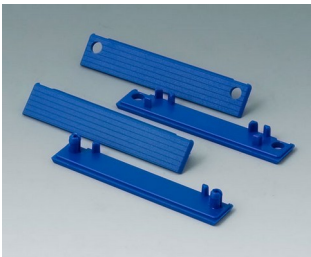
C2201084
Cover strips 80
PC (UL 94 HB)
red RAL 3020



C2201085
Cover strips 80
PC (UL 94 HB)
yellow RAL 1023



C2201086
Cover strips 80
PC (UL 94 HB)
green RAL 6024



C2201087
Cover strips 80
PC (UL 94 HB)
blue RAL 5017



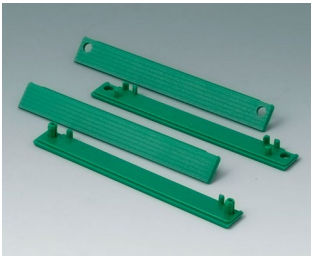
C2203123
Cover strips 120
PC (UL 94 HB)
silver grey RAL 7001



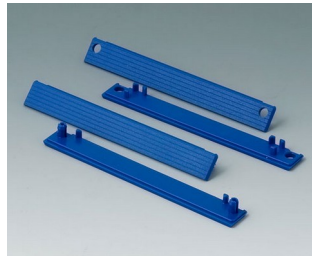
C2203124
Cover strips 120
PC (UL 94 HB)
red RAL 3020



C2203125
Cover strips 120
PC (UL 94 HB)
yellow RAL 1023



C2203126
Cover strips 120
PC (UL 94 HB)
green RAL 6024



C2203127
Cover strips 120
PC (UL 94 HB)
blue RAL 5017



C2204162
Cover strips 160
PC (UL 94 HB)
silver grey RAL 7001



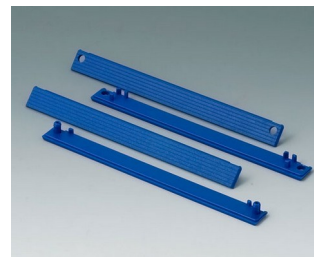
C2204164
Cover strips 160
PC (UL 94 HB)
red RAL 3020



C2204165
Cover strips 160
PC (UL 94 HB)
yellow RAL 1023



C2204166
Cover strips 160
PC (UL 94 HB)
green RAL 6024



C2204167
Cover strips 160
PC (UL 94 HB)
blue RAL 5017

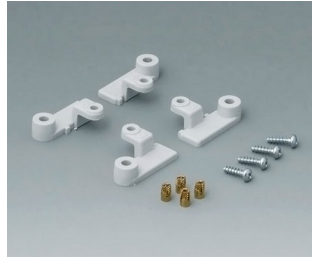


C2299018
Case feet
TPE (UL 94 HB)

ROBUST-BOX



C2299058
PCB support
PC (UL 94 HB)
light grey RAL 7035



C2299068
PCB support
PC (UL 94 HB)
light grey RAL 7035

Salvo modifiche tecniche. © OKW Gehäusesysteme, Buchen/Germania.