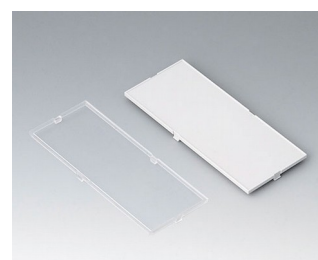
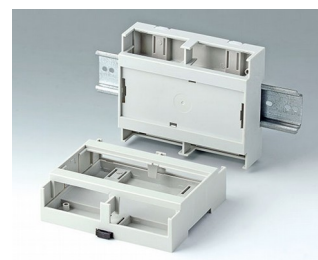
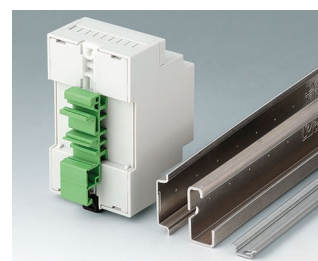
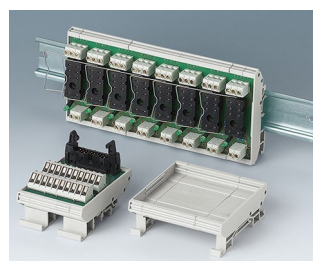
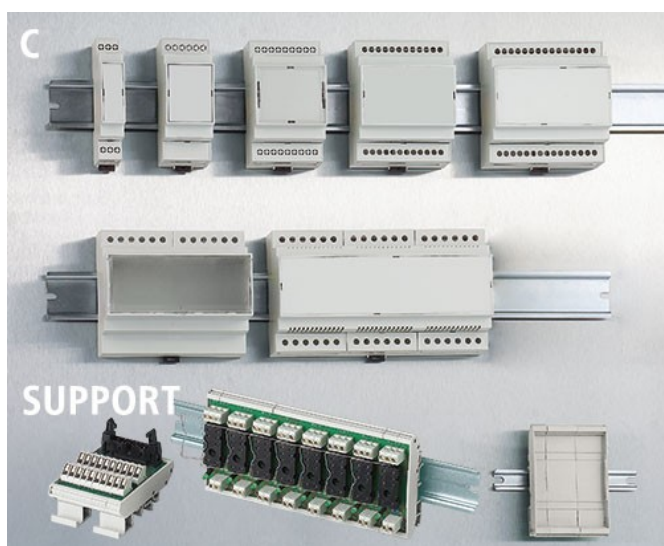


RAILTEC C

Contenitori modulari per guida DIN e supporti modulari

L'ampio programma di contenitori per guida DIN EN 60715 e per il montaggio diretto alla parete. Il programma comprende inoltre supporti modulari per un montaggio personalizzato e maggiore flessibilità con una sostituzione facile delle interfacce.

- Tutti i tipi offrono un elevato grado di flessibilità di montaggio dei componenti e delle operazioni di collegamento
 - Eccezionali proprietà del materiale per notevoli sollecitazioni e un'elevata resistenza termica (UL 94 V-0)
 - Montaggio mediante semplice innesto delle parti del contenitore
 - **RAILTEC C:** per morsetti per circuiti stampati, connettori a pin e connettori frontali; telaio opzionale per ulteriori posizioni del circuito stampato; diverse versioni di placca frontale e copertura frontale; 1-12 larghezze di modulo; per guide DIN EN 60715 TH35; posizionamento dei circuiti stampati in tutte e 3 le direzioni spaziali; adattatore per TH15 e G32 (1-4 moduli) come accessorio
- Versione I Fronte aperto, lato collegamenti liberamente accessibile, senza fessure di ventilazione
- Versione II Fronte aperto, lato collegamenti liberamente accessibile, con fessure di ventilazione
- Versione III Fronte aperto, lato collegamenti con parete contenitore allungata, senza fessure di ventilazione
- Versione IV Fronte chiuso, lato collegamenti liberamente accessibile, senza fessure di ventilazione
- **RAILTEC SUPPORT:** supporti modulari per un montaggio personalizzato dei componenti; per guide DIN EN 60715 TH35, TH15 e G32
 - Grado di protezione IP 40



RAILTEC C

Modifiche specifiche del cliente

Che caratteristiche deve avere il vostro prodotto personalizzato? Su richiesta vi forniamo i contenitori e manopole pronti per il montaggio e con tutte le modifiche e le caratteristiche specifiche.

Opzioni prodotto per Railtec C



Lavorazione
meccanica



Verniciatura



Stampa



Marcatura laser



Pellicole decorative



Confezionamento /
montaggio

Versioni



B6700100
RAILTEC C, 1 module, Vers. I
PC (UL 94 V-0)
light grey
17,5x90x58mm



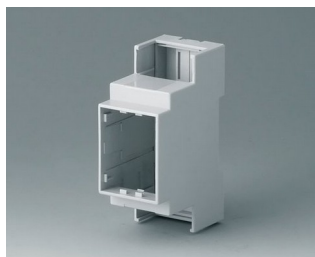
B6700102
RAILTEC C, 1 module, Vers. II
PC (UL 94 V-0)
light grey
17,5x90x58mm



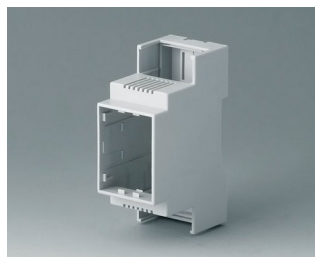
B6700104
RAILTEC C, 1 module, Vers. III
PC (UL 94 V-0)
light grey
17,5x90x58mm



B6700106
RAILTEC C, 1 module, Vers. IV
PC (UL 94 V-0)
light grey
17,5x90x58mm



B6701100
RAILTEC C, 2 modules, Vers. I
PC (UL 94 V-0)
light grey
36x90x58mm



B6701102
RAILTEC C, 2 modules, Vers. II
PC (UL 94 V-0)
light grey
36x90x58mm

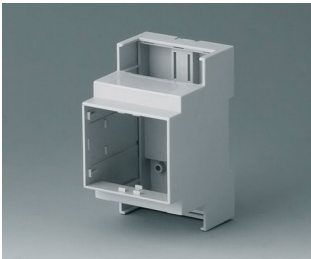


B6701104
RAILTEC C, 2 modules, Vers. III
PC (UL 94 V-0)
light grey
36x90x58mm

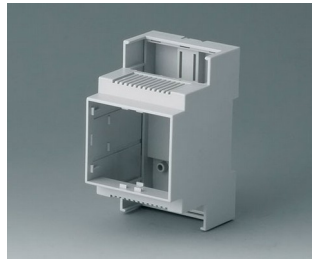


B6701106
RAILTEC C, 2 modules, Vers. IV
PC (UL 94 V-0)
light grey
36x90x58mm

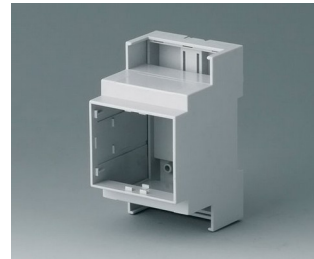
RAILTEC C



B6702100
RAILTEC C, 3 modules, Vers. I
PC (UL 94 V-0)
light grey
53x90x58mm



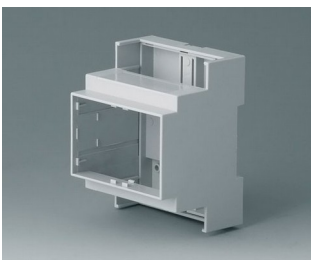
B6702102
RAILTEC C, 3 modules, Vers. II
PC (UL 94 V-0)
light grey
53x90x58mm



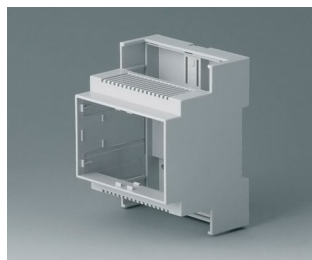
B6702104
RAILTEC C, 3 modules, Vers. III
PC (UL 94 V-0)
light grey
53x90x58mm



B6702106
RAILTEC C, 3 modules, Vers. IV
PC (UL 94 V-0)
light grey
53x90x58mm



B6703100
RAILTEC C, 4 modules, Vers. I
PC (UL 94 V-0)
light grey
71x90x58mm



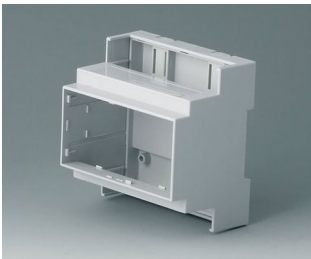
B6703102
RAILTEC C, 4 modules, Vers. II
PC (UL 94 V-0)
light grey
71x90x58mm



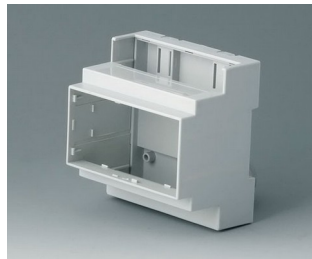
B6703104
RAILTEC C, 4 modules, Vers. III
PC (UL 94 V-0)
light grey
71x90x58mm



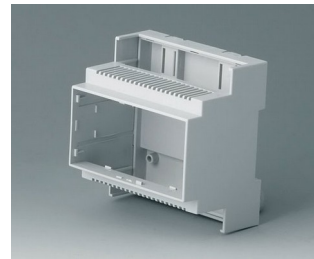
B6703106
RAILTEC C, 4 modules, Vers. IV
PC (UL 94 V-0)
light grey
71x90x58mm



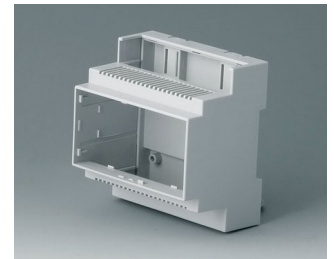
B6704100
RAILTEC C, 5 modules, Vers. I
PC (UL 94 V-0)
light grey
88x90x58mm



B6704101
RAILTEC C, 5 modules, Vers. I
PC (UL 94 V-0)
light grey
88x90x58mm



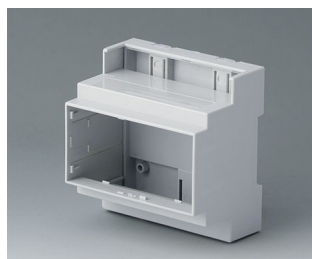
B6704102
RAILTEC C, 5 modules, Vers. II
PC (UL 94 V-0)
light grey
88x90x58mm



B6704103
RAILTEC C, 5 modules, Vers. II
PC (UL 94 V-0)
light grey
88x90x58mm



B6704104
RAILTEC C, 5 modules, Vers. III
PC (UL 94 V-0)
light grey
88x90x58mm



B6704105
RAILTEC C, 5 modules, Vers. III
PC (UL 94 V-0)
light grey
88x90x58mm

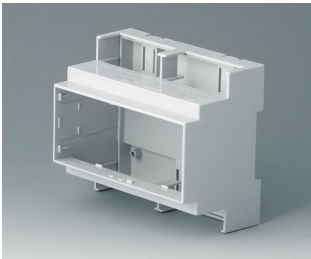


B6704106
RAILTEC C, 5 modules, Vers. IV
PC (UL 94 V-0)
light grey
88x90x58mm

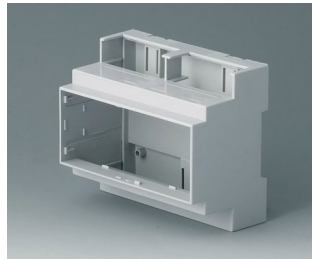


B6704107
RAILTEC C, 5 modules, Vers. IV
PC (UL 94 V-0)
light grey
88x90x58mm

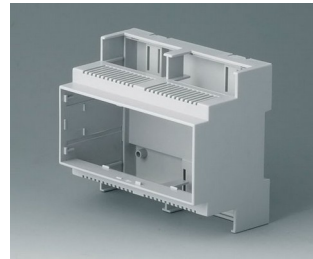
RAILTEC C



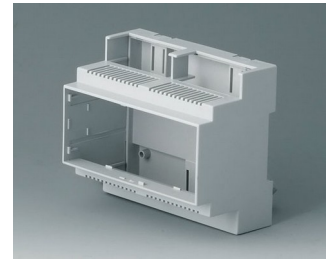
B6705100
RAILTEC C, 6 modules, Vers. I
PC (UL 94 V-0)
light grey
106x90x58mm



B6705101
RAILTEC C, 6 modules, Vers. I
PC (UL 94 V-0)
light grey
106x90x58mm



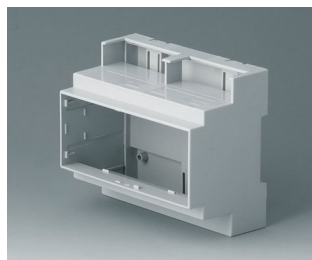
B6705102
RAILTEC C, 6 modules, Vers. II
PC (UL 94 V-0)
light grey
106x90x58mm



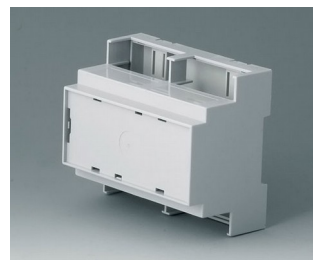
B6705103
RAILTEC C, 6 modules, Vers. II
PC (UL 94 V-0)
light grey
106x90x58mm



B6705104
RAILTEC C, 6 modules, Vers. III
PC (UL 94 V-0)
light grey
106x90x58mm



B6705105
RAILTEC C, 6 modules, Vers. III
PC (UL 94 V-0)
light grey
106x90x58mm



B6705106
RAILTEC C, 6 modules, Vers. IV
PC (UL 94 V-0)
light grey
106x90x58mm



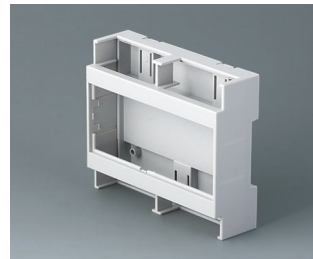
B6705107
RAILTEC C, 6 modules, Vers. IV
PC (UL 94 V-0)
light grey
106x90x58mm



B6705700
RAILTEC C, 6 modules, high
PC (UL 94 V-0)
light grey
107x90x114mm



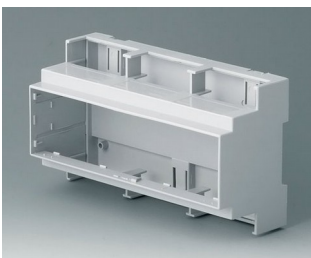
B6705706
RAILTEC C, 6 modules, high
PC (UL 94 V-0)
light grey
107x90x114mm



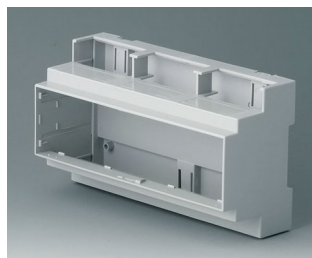
B6705800
RAILTEC C, 6 modules, flat,
Vers. I
PC (UL 94 V-0)
light grey
106,2x90x32mm



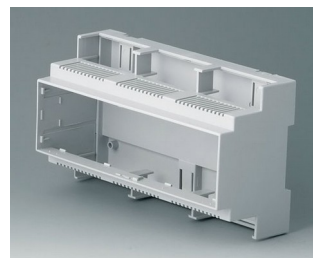
B6705806
RAILTEC C, 6 modules, flat,
Vers. IV
PC (UL 94 V-0)
light grey
106,2x90x32mm



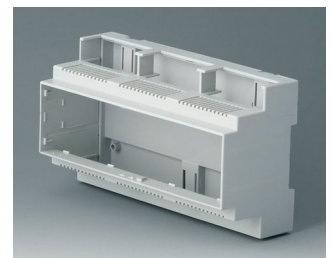
B6706100
RAILTEC C, 9 modules, Vers. I
PC (UL 94 V-0)
light grey
160x90x58mm



B6706101
RAILTEC C, 9 modules, Vers. I
PC (UL 94 V-0)
light grey
160x90x58mm

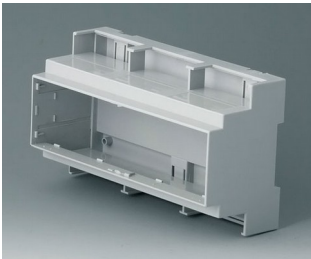


B6706102
RAILTEC C, 9 modules, Vers. II
PC (UL 94 V-0)
light grey
160x90x58mm

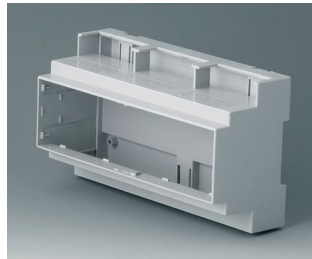


B6706103
RAILTEC C, 9 modules, Vers. II
PC (UL 94 V-0)
light grey
160x90x58mm

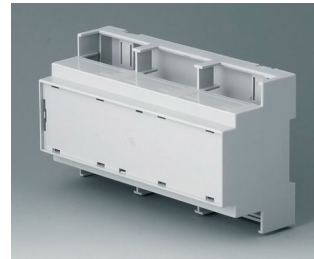
RAILTEC C



B6706104
RAILTEC C, 9 modules, Vers. III
PC (UL 94 V-0)
light grey
160x90x58mm



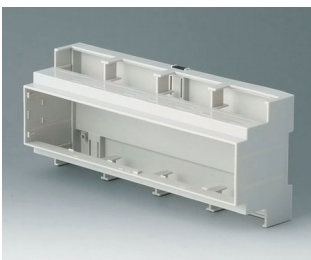
B6706105
RAILTEC C, 9 modules, Vers. III
PC (UL 94 V-0)
light grey
160x90x58mm



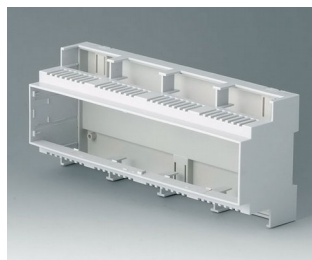
B6706106
RAILTEC C, 9 modules, Vers. IV
PC (UL 94 V-0)
light grey
160x90x58mm



B6706107
RAILTEC C, 9 modules, Vers. IV
PC (UL 94 V-0)
light grey
160x90x58mm



B6707100
RAILTEC C, 12 modules, Vers. I
PC (UL 94 V-0)
light grey
210x90x58mm



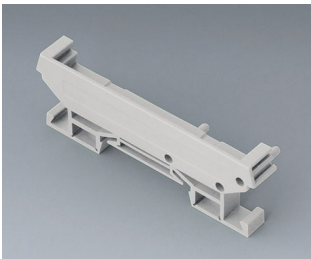
B6707102
RAILTEC C, 12 modules, Vers. II
PC (UL 94 V-0)
light grey
210x90x58mm



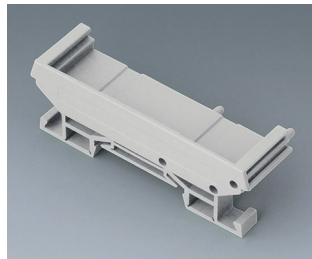
B6724333
RAILTEC SUP. 72, end section
PA 6 (30) (UL 94 V-0)
light grey
82x11,2x16mm



B6724334
RAILTEC SUP. 72, end section
PA 6 (30) (UL 94 V-0)
light grey
82x22,2x16mm



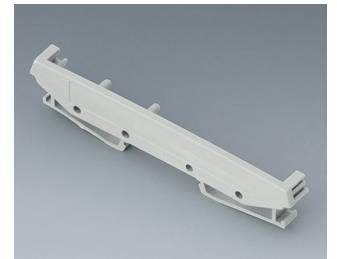
B6724335
RAILTEC SUP. 72, end section
with foot
PA 6 (30) (UL 94 V-0)
light grey
82x11,2x22,5mm



B6724336
RAILTEC SUP. 72, end section
with foot
PA 6 (30) (UL 94 V-0)
light grey
82x22,2x22,5mm



B6724444
RAILTEC SUP. 107, end section
PA 6 (30) (UL 94 V-0)
light grey
118x11,5x17,5mm

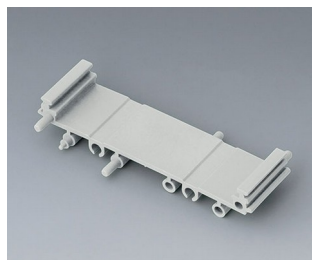


B6724445
RAILTEC SUP. 107, end section
with foot
PA 6 (30) (UL 94 V-0)
light grey
118x11,5x27,5mm

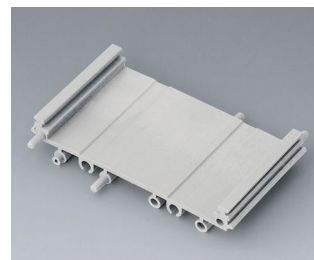
System components to complete



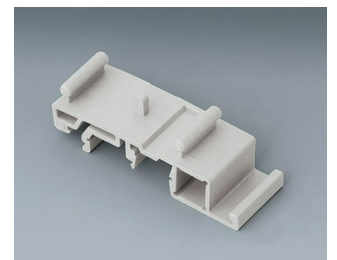
B6724330
RAILTEC SUP. 72, intermediate
part
PA 6 (30) (UL 94 V-0)
light grey
82x11,25x16mm



B6724331
RAILTEC SUP. 72, intermediate
part
PA 6 (30) (UL 94 V-0)
light grey
82x22,5x16mm

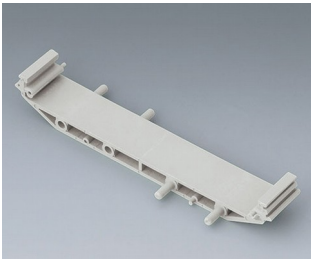


B6724332
RAILTEC SUP. 72, intermediate
part
PA 6 (30) (UL 94 V-0)
light grey
82x45x16mm

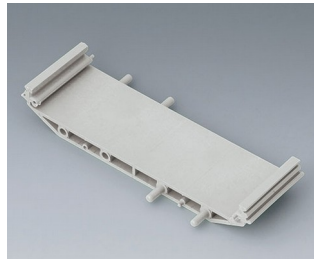


B6724337
RAILTEC SUP. 72, foot
PA 6 (30) (UL 94 V-0)
light grey

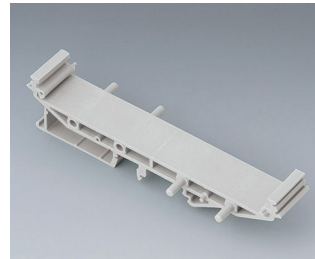
RAILTEC C



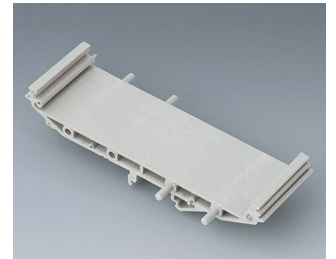
B6724440
RAILTEC SUP. 107, intermediate part
PA 6 (30) (UL 94 V-0)
light grey
118x18,5x17,5mm



B6724441
RAILTEC SUP. 107, intermediate part
PA 6 (30) (UL 94 V-0)
light grey
118x35x17,5mm

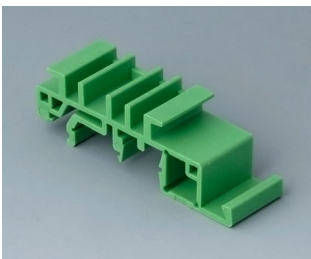


B6724442
RAILTEC SUP. 107, intermediate p. + foot
PA 6 (30) (UL 94 V-0)
light grey
118x18,5x27,5mm



B6724443
RAILTEC SUP. 107, intermediate p. + foot
PA 6 (30) (UL 94 V-0)
light grey
118x35x27,5mm

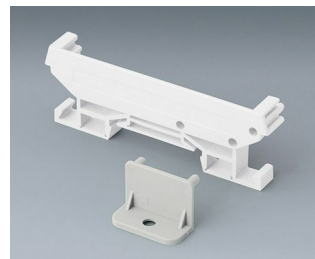
Accessory "wall/holder"



B6811542
Adapter
PA 6 (UL 94 V-0)
green



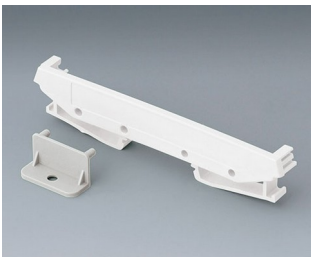
B6824532
Wall suspension element for SUP. 72
PA 6 (30) (UL 94 V-0)
light grey



B6824533
Wall suspension element with foot, SUP.
PA 6 (30) (UL 94 V-0)
light grey

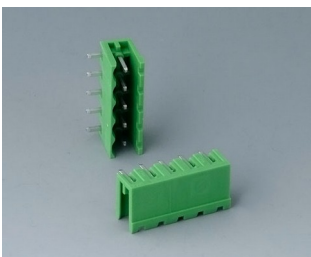


B6824542
Wall suspension element for SUP. 107
PA 6 (30) (UL 94 V-0)
light grey

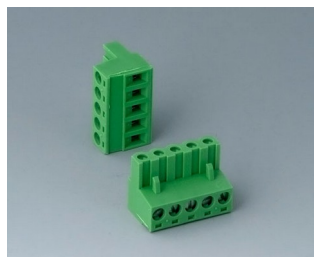


B6824543
Wall suspension element with foot, SUP.
PA 6 (30) (UL 94 V-0)
light grey

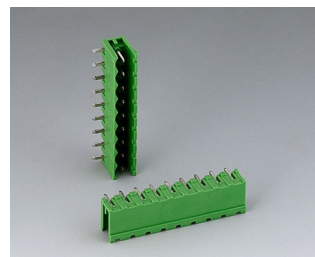
Accessory "terminals"



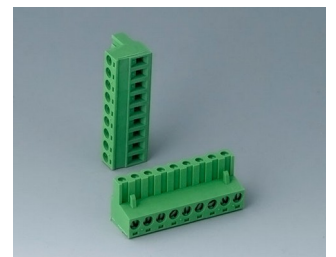
B6601222
Plug header, block 5.08
PA 6 (UL 94 V-0)



B6601223
Plug header, block 5.08
PA 6 (UL 94 V-0)

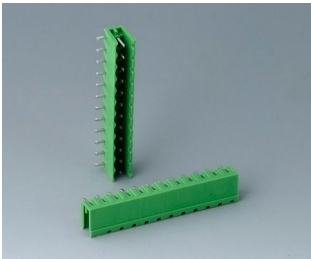


B6602222
Plug header, block 5.08
PA 6 (UL 94 V-0)

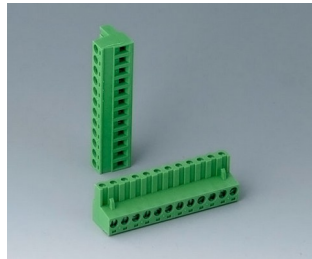


B6602223
Plug header, block 5.08
PA 6 (UL 94 V-0)

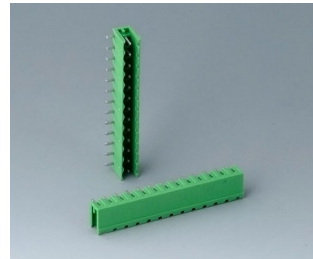
RAILTEC C



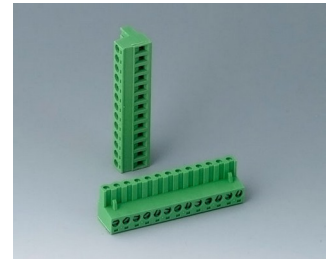
B6603222
 Plug header, block 5.08
 PA 6 (UL 94 V-0)



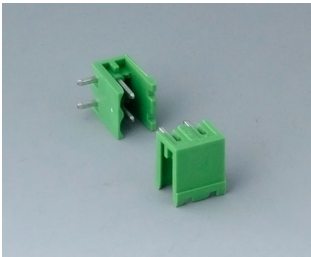
B6603223
 Plug header, block 5.08
 PA 6 (UL 94 V-0)



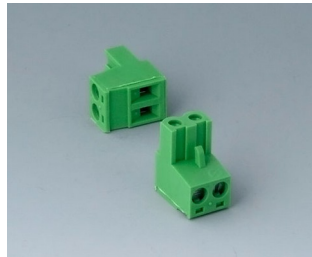
B6605222
 Plug header, block 5.08
 PA 6 (UL 94 V-0)



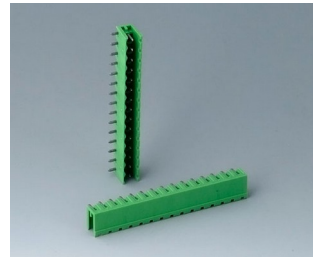
B6605223
 Plug header, block 5.08
 PA 6 (UL 94 V-0)



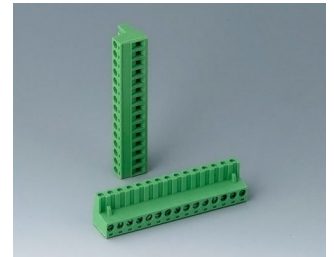
B6606222
 Plug header, block 5.08
 PA 6 (UL 94 V-0)



B6606223
 Plug header, block 5.08
 PA 6 (UL 94 V-0)



B6607222
 Plug header, block 5.08
 PA 6 (UL 94 V-0)



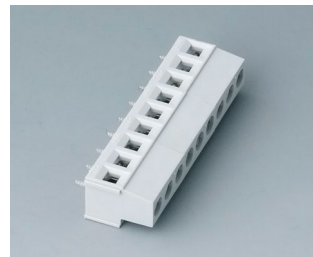
B6607223
 Plug header, block 5.08
 PA 6 (UL 94 V-0)



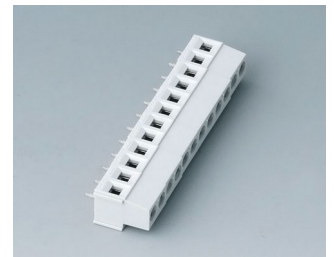
B6800650
 Terminal block, block 5.08
 PA 68 (UL 94 V-0)
 light grey



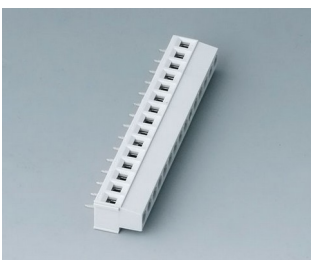
B6801650
 Terminal block, block 5.08
 PA 68 (UL 94 V-0)
 light grey



B6802650
 Terminal block, block 5.08
 PA 68 (UL 94 V-0)
 light grey



B6803650
 Terminal block, block 5.08
 PA 68 (UL 94 V-0)
 light grey



B6804650
 Terminal block, block 5.08
 PA 68 (UL 94 V-0)
 light grey

RAILTEC C

Accessory "terminal guards"



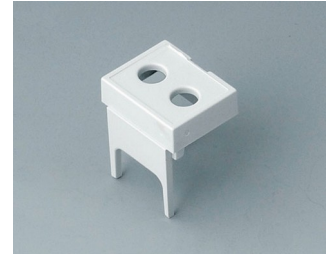
B6800111
Terminal guards, closed
PC (UL 94 V-0)
light grey



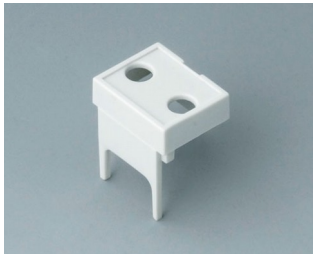
B6800112
Terminal guards, perforated,
5.08
PC (UL 94 V-0)
light grey



B6800113
Terminal guards, with holes, 5.08
PC (UL 94 V-0)
light grey



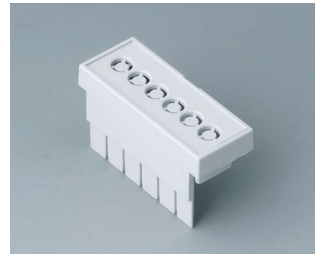
B6800114
Terminal guards, with holes, 7.5
& 7.62
PC (UL 94 V-0)
light grey



B6800115
Terminal guards, with holes,
10.16
PC (UL 94 V-0)
light grey



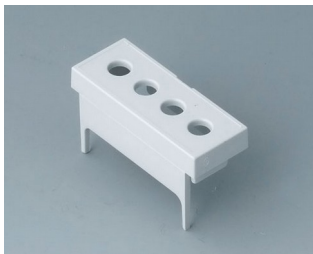
B6801111
Terminal guards, closed
PC (UL 94 V-0)
light grey



B6801112
Terminal guards, perforated,
5.08
PC (UL 94 V-0)
light grey



B6801113
Terminal guards, with holes, 5.08
PC (UL 94 V-0)
light grey



B6801114
Terminal guards, with holes, 7.5
& 7.62
PC (UL 94 V-0)
light grey



B6801115
Terminal guards, with holes,
10.16
PC (UL 94 V-0)
light grey



B6802111
Terminal guards, closed
PC (UL 94 V-0)
light grey



B6802112
Terminal guards, perforated,
5.08
PC (UL 94 V-0)
light grey



B6802113
Terminal guards, with holes, 5.08
PC (UL 94 V-0)
light grey



B6802114
Terminal guards, with holes, 7.5
& 7.62
PC (UL 94 V-0)
light grey

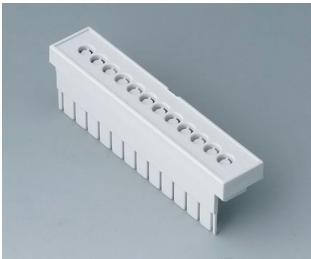


B6802115
Terminal guards, with holes,
10.16
PC (UL 94 V-0)
light grey



B6803111
Terminal guards, closed
PC (UL 94 V-0)
light grey

RAILTEC C



B6803112
Terminal guards, perforated,
5.08
PC (UL 94 V-0)
light grey



B6803113
Terminal guards, with holes, 5.08
PC (UL 94 V-0)
light grey



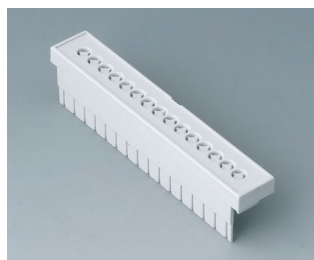
B6803114
Terminal guards, with holes, 7.5
& 7.62
PC (UL 94 V-0)
light grey



B6803115
Terminal guards, with holes,
10.16
PC (UL 94 V-0)
light grey



B6804111
Terminal guards, closed
PC (UL 94 V-0)
light grey



B6804112
Terminal guards, perforated,
5.08
PC (UL 94 V-0)
light grey



B6804113
Terminal guards, with holes, 5.08
PC (UL 94 V-0)
light grey



B6804114
Terminal guards, with holes, 7.5
& 7.62
PC (UL 94 V-0)
light grey



B6804115
Terminal guards, with holes,
10.16
PC (UL 94 V-0)
light grey

Accessory



B6800100
Front panel, 1 module
PC (UL 94 V-0)
light grey
14x42mm



B6800200
Front panel, 1 module
PC (UL 94 V-0)
transparent
14x42mm



B6801100
Front panel, 2 modules
PC (UL 94 V-0)
light grey
32x42mm



B6801200
Front panel, 2 modules
PC (UL 94 V-0)
transparent
32x42mm

RAILTEC C



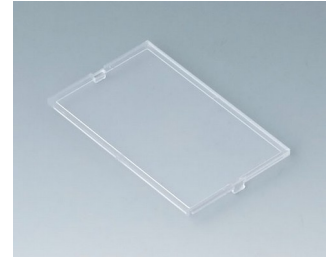
B6802100
Front panel, 3 modules
PC (UL 94 V-0)
light grey
49x42mm



B6802200
Front panel, 3 modules
PC (UL 94 V-0)
transparent
49x42mm



B6803100
Front panel, 4 modules
PC (UL 94 V-0)
light grey
67x42mm



B6803200
Front panel, 4 modules
PC (UL 94 V-0)
transparent
67x42mm



B6804100
Front panel, 5 modules
PC (UL 94 V-0)
light grey
84x42mm



B6804200
Front panel, 5 modules
PC (UL 94 V-0)
transparent
84x42mm



B6805100
Front panel, 6 modules
PC (UL 94 V-0)
light grey
102x42mm



B6805200
Front panel, 6 modules
PC (UL 94 V-0)
transparent
102x42mm



B6806100
Front panel, 9 modules
PC (UL 94 V-0)
light grey
155x42mm



B6806200
Front panel, 9 modules
PC (UL 94 V-0)
transparent
155x42mm



B6807100
Front panel, 12 modules
PC (UL 94 V-0)
light grey
207,5x42mm

Salvo modifiche tecniche. © OKW Gehäusesysteme, Buchen/Germania.