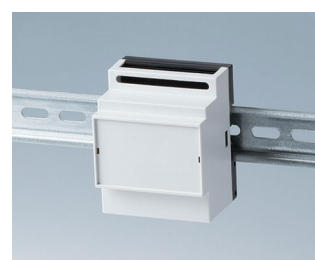
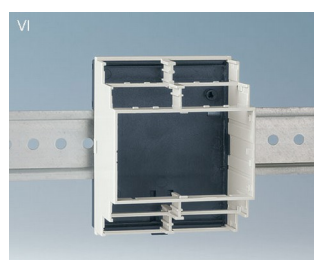
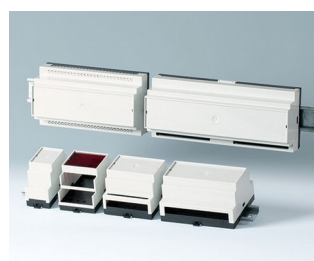


RAILTEC B

Contenitori versatili per guida DIN

La famiglia di contenitori RAILTEC B si caratterizza per il montaggio con arresto a scatto facile e veloce su guide DIN secondo EN 60715 TH35.

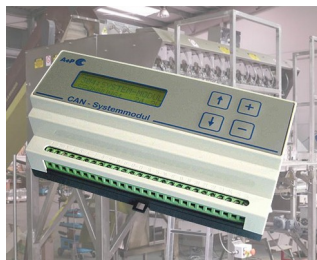
- 6 dimensioni (2-12 moduli) secondo DIN 43880, misura 1
- 4 misure (2, 4, 6 e 9 moduli) con parte superiore piatta - **NUOVO**: 2 versioni
- Isolamento completo e protezione dal contatto secondo VBG 4 e IEC 529/DIN VDE 0470-1
- Materiale ignifugo (UL 94 V-0)
- **Versione I**: per morsetti per circuiti stampati con passo 5,0/5,08
- **Versione II**: per connettori a pin con passo 5,0/5,08
- **Versione III**: contenitore chiuso, per es. per connettori frontali, connettori D-SUB, ecc.
- **Versione IV**: per morsetti per circuiti stampati con passo 5,0/5,08 (solo sotto)
- **Versione V**: per perforazioni con passo 5,0
- **Versione VI**: contenitore aperto per combinazioni individuali (copertura per morsetti/parete divisoria), a scelta con 1 o 2 livelli di collegamento
- Copertura per connettori KNX, adatta per moduli di larghezza 2 e 4 (contenitore versione VI ovvero contenitore con parte superiore piatta)
- Adatti per guide DIN EN 60715 TH35 o montaggio diretto alla parete
- Senza/con fessure di ventilazione per una buona sottrazione di calore
- Personalizzabili: posizionamento dei circuiti stampati in tutte e tre le direzioni spaziali; parte inferiore con punti di fissaggio, parte superiore con guide
- Clip di innesto premontata nella parte inferiore
- Coperchio trasparente (accessorio per versioni alte) per la protezione degli elementi di indicazione e comando
- Grado di protezione IP 40



RAILTEC B

Esempi di applicazione

- Impiego universale come contenitore per installazioni
- Rispetta i requisiti dell'industria meccanica e automobilistica
- Smart Factory / Industrie 4.0
- Equipaggiamento tecnico per automazione di edifici e SMART-HOME
- Particolarmente adatto per la tecnica di comando e di regolazione



CAN BUS system module for packaging machines



Earthfault detection and short-circuit indicator



Industrial VDSL2/ADSL2 modems



Monitoring of electrical variables



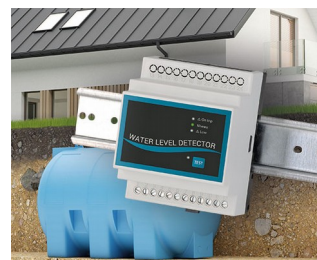
Power measuring device for energy analysis



Remote meter for condition monitoring



Smart meter for electricity consumption



Water level detector

Modifiche specifiche del cliente

Che caratteristiche deve avere il vostro prodotto personalizzato? Su richiesta vi forniamo i contenitori e manopole pronti per il montaggio e con tutte le modifiche e le caratteristiche specifiche.
Opzioni prodotto per Railtec B



Lavorazione meccanica



Verniciatura



Stampa



Marcatura laser



Pellicole decorative



Confezionamento / montaggio

RAILTEC B

Versioni



B6501110
RAILTEC B, 2 modules, Vers. V
PC (UL 94 V-0)
light grey RAL 7035
35x86x58mm



B6501111
RAILTEC B, 2 modules, Vers. I
PC (UL 94 V-0)
light grey RAL 7035
35x86x58mm



B6501112
RAILTEC B, 2 modules, Vers. II
PC (UL 94 V-0)
light grey RAL 7035
35x86x58mm



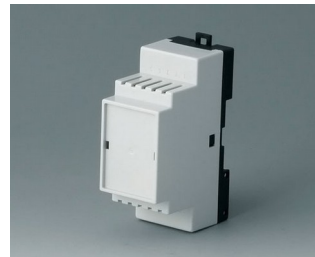
B6501113
RAILTEC B, 2 modules, Vers. III
PC (UL 94 V-0)
light grey RAL 7035
35x86x58mm



B6501114
RAILTEC B, 2 modules, Vers. I
PC (UL 94 V-0)
light grey RAL 7035
35x86x58mm



B6501115
RAILTEC B, 2 modules, Vers. II
PC (UL 94 V-0)
light grey RAL 7035
35x86x58mm



B6501116
RAILTEC B, 2 modules, Vers. III
PC (UL 94 V-0)
light grey RAL 7035
35x86x58mm



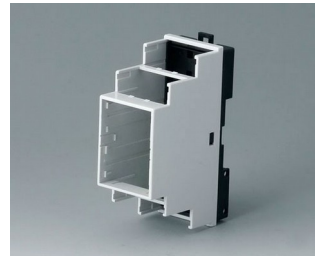
B6501117
RAILTEC B, 2 modules, Vers. IV
PC (UL 94 V-0)
light grey RAL 7035
35x86x58mm



B6501118
RAILTEC B, 2 modules, Vers. IV
PC (UL 94 V-0)
light grey RAL 7035
35x86x58mm



B6501119
RAILTEC B, 2 modules, Vers. V
PC (UL 94 V-0)
light grey RAL 7035
35x86x58mm



B6501121
RAILTEC B, 2 modules, Vers. VI
PC (UL 94 V-0)
light grey RAL 7035
35x90x58mm



B6501223
RAILTEC B, 2 modules, Vers. III
low profile
PC (UL 94 V-0)
light grey RAL 7035
35x86x31,25mm



B6501229
RAILTEC B, 2 modules, Vers.
low profile
PC (UL 94 V-0)
light grey RAL 7035
35x89,6x31,25mm



B6502110
RAILTEC B, 3 modules, Vers. V
PC (UL 94 V-0)
light grey RAL 7035
52,5x86x58mm

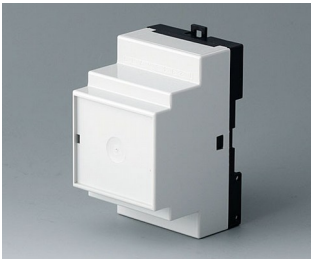


B6502111
RAILTEC B, 3 modules, Vers. I
PC (UL 94 V-0)
light grey RAL 7035
52,5x86x58mm



B6502112
RAILTEC B, 3 modules, Vers. II
PC (UL 94 V-0)
light grey RAL 7035
52,5x86x58mm

RAILTEC B



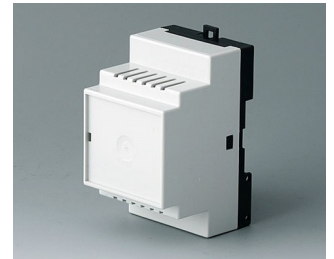
B6502113
RAILTEC B, 3 modules, Vers. III
PC (UL 94 V-0)
light grey RAL 7035
52,5x86x58mm



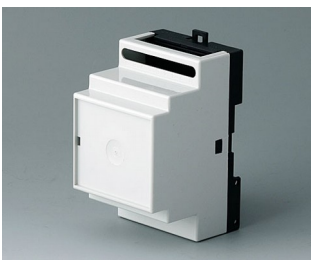
B6502114
RAILTEC B, 3 modules, Vers. I
PC (UL 94 V-0)
light grey RAL 7035
52,5x86x58mm



B6502115
RAILTEC B, 3 modules, Vers. II
PC (UL 94 V-0)
light grey RAL 7035
52,5x86x58mm



B6502116
RAILTEC B, 3 modules, Vers. III
PC (UL 94 V-0)
light grey RAL 7035
52,5x86x58mm



B6502117
RAILTEC B, 3 modules, Vers. IV
PC (UL 94 V-0)
light grey RAL 7035
52,5x86x58mm



B6502118
RAILTEC B, 3 modules, Vers. IV
PC (UL 94 V-0)
light grey RAL 7035
52,5x86x58mm



B6502119
RAILTEC B, 3 modules, Vers. V
PC (UL 94 V-0)
light grey RAL 7035
52,5x86x58mm



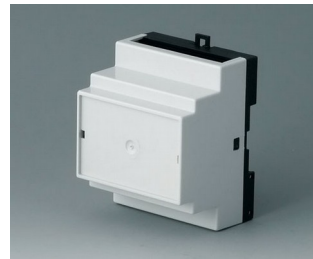
B6502121
RAILTEC B, 3 modules, Vers. VI
PC (UL 94 V-0)
light grey RAL 7035
52,5x90x58mm



B6503110
RAILTEC B, 4 modules, Vers. V
PC (UL 94 V-0)
light grey RAL 7035
70x86x58mm



B6503111
RAILTEC B, 4 modules, Vers. I
PC (UL 94 V-0)
light grey RAL 7035
70x86x58mm



B6503112
RAILTEC B, 4 modules, Vers. II
PC (UL 94 V-0)
light grey RAL 7035
70x86x58mm



B6503113
RAILTEC B, 4 modules, Vers. III
PC (UL 94 V-0)
light grey RAL 7035
70x86x58mm



B6503114
RAILTEC B, 4 modules, Vers. I
PC (UL 94 V-0)
light grey RAL 7035
70x86x58mm



B6503115
RAILTEC B, 4 modules, Vers. II
PC (UL 94 V-0)
light grey RAL 7035
70x86x58mm



B6503116
RAILTEC B, 4 modules, Vers. III
PC (UL 94 V-0)
light grey RAL 7035
70x86x58mm



B6503117
RAILTEC B, 4 modules, Vers. IV
PC (UL 94 V-0)
light grey RAL 7035
70x86x58mm

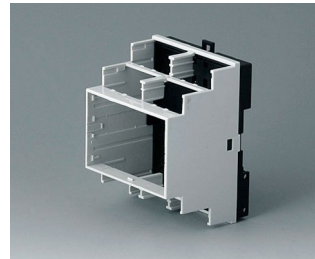
RAILTEC B



B6503118
RAILTEC B, 4 modules, Vers. IV
PC (UL 94 V-0)
light grey RAL 7035
70x86x58mm



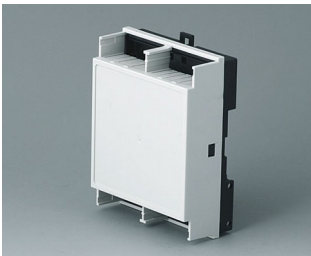
B6503119
RAILTEC B, 4 modules, Vers. V
PC (UL 94 V-0)
light grey RAL 7035
70x86x58mm



B6503121
RAILTEC B, 4 modules, Vers. VI
PC (UL 94 V-0)
light grey RAL 7035
70x90x58mm



B6503223
RAILTEC B, 4 modules, Vers. III
low profile
PC (UL 94 V-0)
light grey RAL 7035
70x86x31,25mm



B6503229
RAILTEC B, 4 modules, Vers.
low profile
PC (UL 94 V-0)
light grey RAL 7035
70x89,6x31,25mm



B6504110
RAILTEC B, 6 modules, Vers. V
PC (UL 94 V-0)
light grey RAL 7035
105x86x59mm



B6504111
RAILTEC B, 6 modules, Vers. I
PC (UL 94 V-0)
light grey RAL 7035
105x86x59mm



B6504112
RAILTEC B, 6 modules, Vers. II
PC (UL 94 V-0)
light grey RAL 7035
105x86x59mm



B6504113
RAILTEC B, 6 modules, Vers. III
PC (UL 94 V-0)
light grey RAL 7035
105x86x59mm



B6504114
RAILTEC B, 6 modules, Vers. I
PC (UL 94 V-0)
light grey RAL 7035
105x86x59mm



B6504115
RAILTEC B, 6 modules, Vers. II
PC (UL 94 V-0)
light grey RAL 7035
105x86x59mm



B6504116
RAILTEC B, 6 modules, Vers. III
PC (UL 94 V-0)
light grey RAL 7035
105x86x59mm



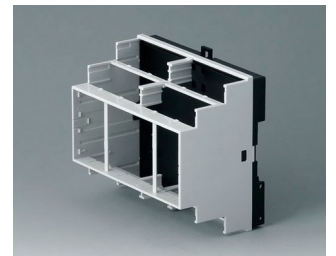
B6504117
RAILTEC B, 6 modules, Vers. IV
PC (UL 94 V-0)
light grey RAL 7035
105x86x59mm



B6504118
RAILTEC B, 6 modules, Vers. IV
PC (UL 94 V-0)
light grey RAL 7035
105x86x59mm



B6504119
RAILTEC B, 6 modules, Vers. V
PC (UL 94 V-0)
light grey RAL 7035
105x86x59mm



B6504121
RAILTEC B, 6 modules, Vers. VI
PC (UL 94 V-0)
light grey RAL 7035
105x90x58mm

RAILTEC B



B6504223
RAILTEC B, 6 modules, Vers. III
low profile
PC (UL 94 V-0)
light grey RAL 7035
105x86x31,25mm



B6504229
RAILTEC B, 6 modules, Vers.
low profile
PC (UL 94 V-0)
light grey RAL 7035
105x89,6x31,25mm



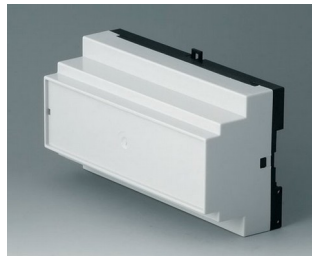
B6505110
RAILTEC B, 9 modules, Vers. V
PC (UL 94 V-0)
light grey RAL 7035
157x86x59mm



B6505111
RAILTEC B, 9 modules, Vers. I
PC (UL 94 V-0)
light grey RAL 7035
157x86x59mm



B6505112
RAILTEC B, 9 modules, Vers. II
PC (UL 94 V-0)
light grey RAL 7035
157x86x59mm



B6505113
RAILTEC B, 9 modules, Vers. III
PC (UL 94 V-0)
light grey RAL 7035
157x86x59mm



B6505114
RAILTEC B, 9 modules, Vers. I
PC (UL 94 V-0)
light grey RAL 7035
157x86x59mm



B6505115
RAILTEC B, 9 modules, Vers. II
PC (UL 94 V-0)
light grey RAL 7035
157x86x59mm



B6505116
RAILTEC B, 9 modules, Vers. III
PC (UL 94 V-0)
light grey RAL 7035
157x86x59mm



B6505117
RAILTEC B, 9 modules, Vers. IV
PC (UL 94 V-0)
light grey RAL 7035
157x86x59mm



B6505118
RAILTEC B, 9 modules, Vers. IV
PC (UL 94 V-0)
light grey RAL 7035
157x86x59mm



B6505119
RAILTEC B, 9 modules, Vers. V
PC (UL 94 V-0)
light grey RAL 7035
157x86x59mm



B6505121
RAILTEC B, 9 modules, Vers. VI
PC (UL 94 V-0)
light grey RAL 7035
157x90x58mm



B6505223
RAILTEC B, 9 modules, Vers. III
low profile
PC (UL 94 V-0)
light grey RAL 7035
157x86x31,25mm



B6505229
RAILTEC B, 9 modules, Vers.
low profile
PC (UL 94 V-0)
light grey RAL 7035
157,5x89,6x31,25mm

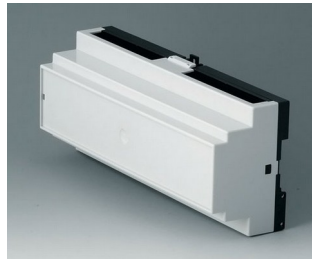


B6506110
RAILTEC B, 12 modules, Vers. V
PC (UL 94 V-0)
light grey RAL 7035
210x90x58mm

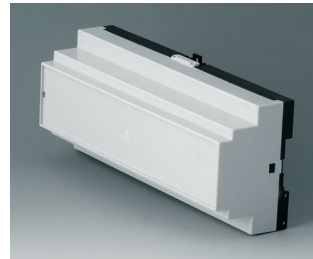
RAILTEC B



B6506111
RAILTEC B, 12 modules, Vers. I
PC (UL 94 V-0)
light grey RAL 7035
210x90x58mm



B6506112
RAILTEC B, 12 modules, Vers. II
PC (UL 94 V-0)
light grey RAL 7035
210x90x58mm



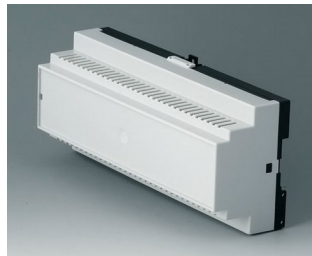
B6506113
RAILTEC B, 12 modules, Vers. III
PC (UL 94 V-0)
light grey RAL 7035
210x90x58mm



B6506114
RAILTEC B, 12 modules, Vers. I
PC (UL 94 V-0)
light grey RAL 7035
210x90x58mm



B6506115
RAILTEC B, 12 modules, Vers. II
PC (UL 94 V-0)
light grey RAL 7035
210x90x58mm



B6506116
RAILTEC B, 12 modules, Vers. III
PC (UL 94 V-0)
light grey RAL 7035
210x90x58mm



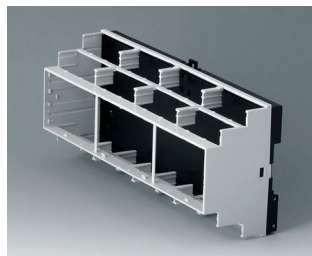
B6506117
RAILTEC B, 12 modules, Vers. IV
PC (UL 94 V-0)
light grey RAL 7035
210x90x58mm



B6506118
RAILTEC B, 12 modules, Vers. IV
PC (UL 94 V-0)
light grey RAL 7035
210x90x58mm



B6506119
RAILTEC B, 12 modules, Vers. V
PC (UL 94 V-0)
light grey RAL 7035
210x90x58mm



B6506121
RAILTEC B, 12 modules, Vers. VI
PC (UL 94 V-0)
light grey RAL 7035
210x90x58mm



B6511111
RAILTEC B, 2 modules, Vers. XI
PC (UL 94 V-0)
light grey RAL 7035
35x86x58mm



B6511112
RAILTEC B, 2 modules, Vers. XII
PC (UL 94 V-0)
light grey RAL 7035
35x86x58mm



B6511113
RAILTEC B, 2 modules, Vers. XIII
PC (UL 94 V-0)
light grey RAL 7035
35x86x58mm



B6513111
RAILTEC B, 4 modules, Vers. XI
PC (UL 94 V-0)
light grey RAL 7035
70x86x58mm



B6513112
RAILTEC B, 4 modules, Vers. XII
PC (UL 94 V-0)
light grey RAL 7035
70x86x58mm

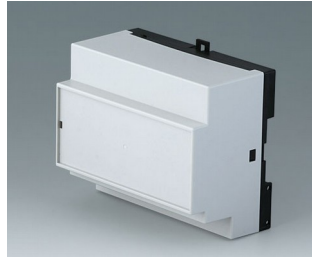


B6513113
RAILTEC B, 4 modules, Vers. XIII
PC (UL 94 V-0)
light grey RAL 7035
70x86x58mm

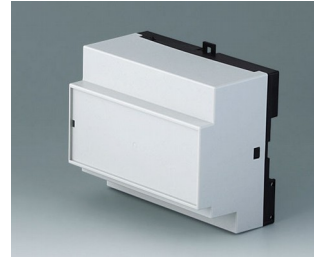
RAILTEC B



B6514111
RAILTEC B, 6 modules, Vers. XI
PC (UL 94 V-0)
light grey RAL 7035
105x86x59mm



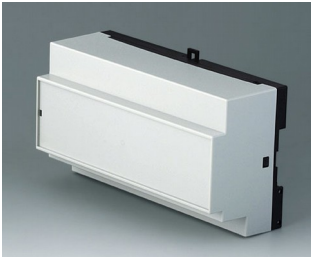
B6514112
RAILTEC B, 6 modules, Vers. XII
PC (UL 94 V-0)
light grey RAL 7035
105x86x59mm



B6514113
RAILTEC B, 6 modules, Vers.
XIII
PC (UL 94 V-0)
light grey RAL 7035
105x86x59mm



B6515111
RAILTEC B, 9 modules, Vers. XI
PC (UL 94 V-0)
light grey RAL 7035
157x86x59mm



B6515112
RAILTEC B, 9 modules, Vers. XII
PC (UL 94 V-0)
light grey RAL 7035
157x86x59mm



B6515113
RAILTEC B, 9 modules, Vers.
XIII
PC (UL 94 V-0)
light grey RAL 7035
157x86x59mm

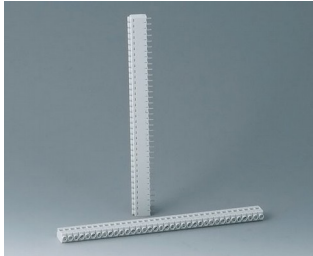
Accessory "wall/holder"



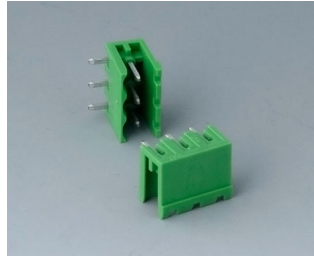
B6600334
Wall suspension elements
PPO (UL 94 V-0)
black

RAILTEC B

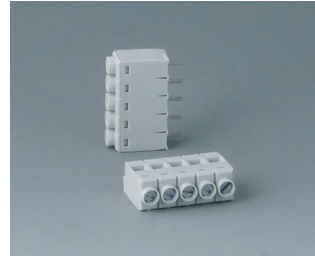
Accessory "terminals"



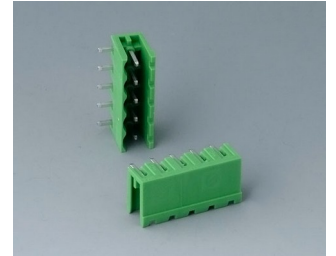
B6600111
Terminal block, block 5.0
PA 68 (UL 94 V-0)
light grey



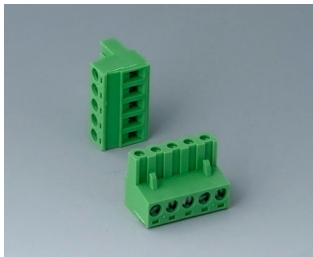
B6600222
Plug header, block 5.08
PA 68 (UL 94 V-0)



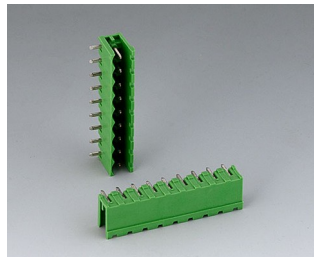
B6601111
Terminal block, block 5.0
PA 68 (UL 94 V-0)



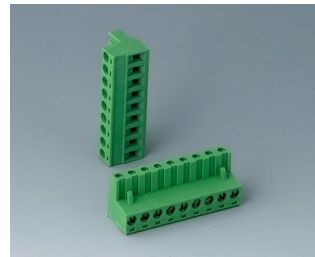
B6601222
Plug header, block 5.08
PA 6 (UL 94 V-0)



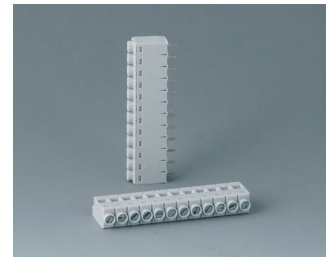
B6601223
Plug header, block 5.08
PA 6 (UL 94 V-0)



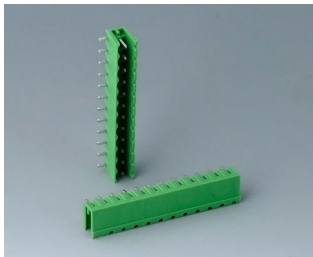
B6602222
Plug header, block 5.08
PA 6 (UL 94 V-0)



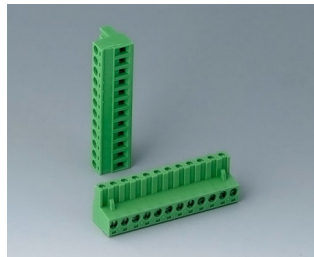
B6602223
Plug header, block 5.08
PA 6 (UL 94 V-0)



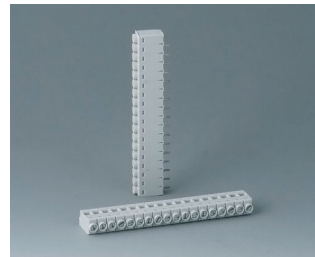
B6603111
Terminal block, block 5.0
PA 68 (UL 94 V-0)



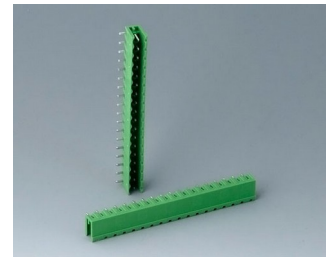
B6603222
Plug header, block 5.08
PA 6 (UL 94 V-0)



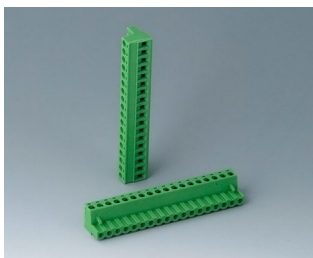
B6603223
Plug header, block 5.08
PA 6 (UL 94 V-0)



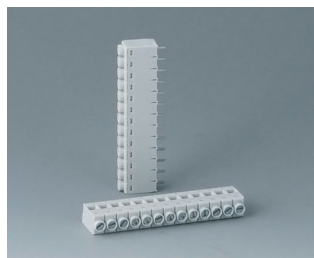
B6604111
Terminal block, block 5.0
PA 68 (UL 94 V-0)



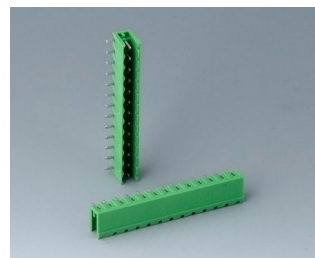
B6604222
Plug header, block 5.08
PA 68 (UL 94 V-0)



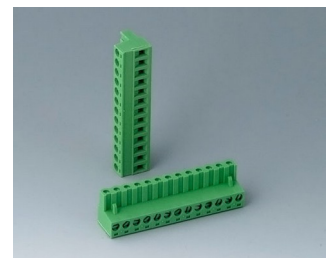
B6604223
Plug header, block 5.08
PA 68 (UL 94 V-0)



B6605111
Terminal block, block 5.0
PA 68 (UL 94 V-0)

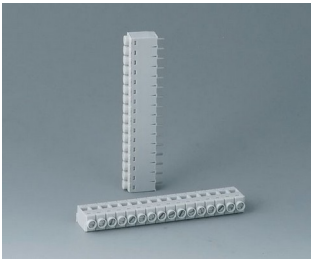


B6605222
Plug header, block 5.08
PA 6 (UL 94 V-0)

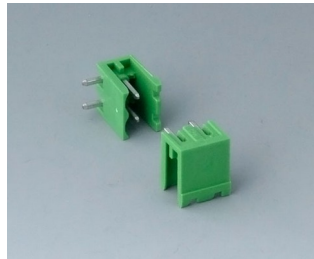


B6605223
Plug header, block 5.08
PA 6 (UL 94 V-0)

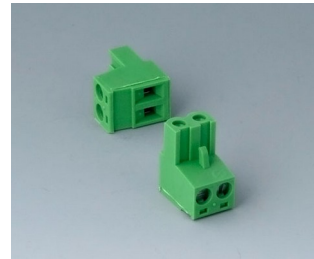
RAILTEC B



B6606111
Terminal block, block 5.0
PA 68 (UL 94 V-0)



B6606222
Plug header, block 5.08
PA 6 (UL 94 V-0)



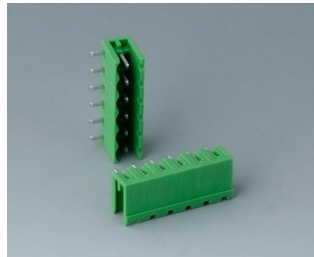
B6606223
Plug header, block 5.08
PA 6 (UL 94 V-0)



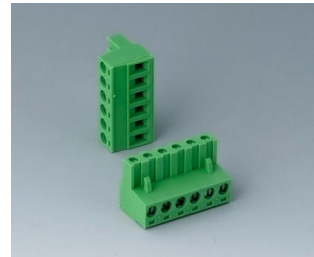
B6607111
Terminal block, block 5.0
PA 68 (UL 94 V-0)



B6608111
Terminal block, block 5.0
PA 68 (UL 94 V-0)



B6608222
Plug header, block 5.08
PA 68 (UL 94 V-0)



B6608223
Plug header, block 5.08
PA 68 (UL 94 V-0)

Accessory "terminal guards"



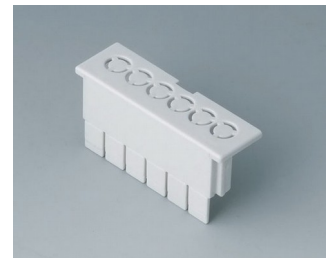
B6607140
Terminal guards, flat
PC (UL 94 V-0)
light grey



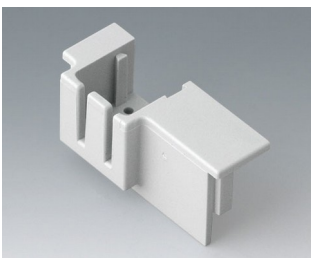
B6607141
Terminal guards, flat
PC (UL 94 V-0)
light grey



B6607142
Terminal guards, flat
PC (UL 94 V-0)
light grey



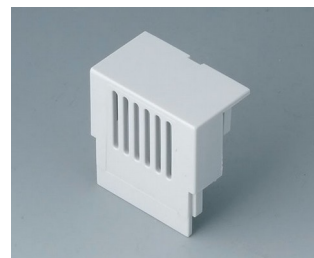
B6607143
Terminal guards, flat
PC (UL 94 V-0)
light grey



B6607145
KNX Cover, flat
PC (UL 94 V-0)
light grey



B6607160
Terminal guards, high
PC (UL 94 V-0)
light grey



B6607161
Terminal guards, high
PC (UL 94 V-0)
light grey



B6607162
Terminal guards, high
PC (UL 94 V-0)
light grey

RAILTEC B



B6607163
Terminal guards, high
PC (UL 94 V-0)
light grey



B6607191
Partition plate
PC (UL 94 V-0)
light grey



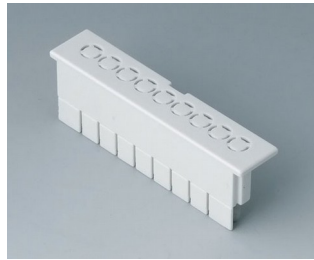
B6608140
Terminal guards, flat
PC (UL 94 V-0)
light grey



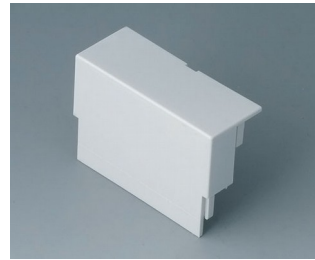
B6608141
Terminal guards, flat
PC (UL 94 V-0)
light grey



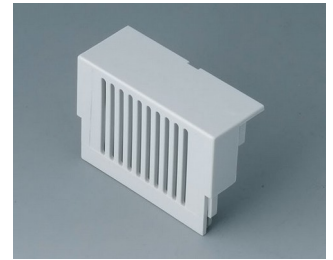
B6608142
Terminal guards, flat
PC (UL 94 V-0)
light grey



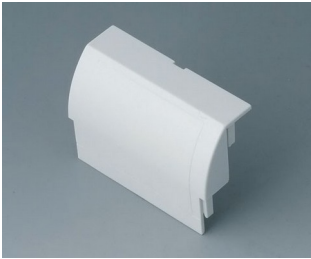
B6608143
Terminal guards, flat
PC (UL 94 V-0)
light grey



B6608160
Terminal guards, high
PC (UL 94 V-0)
light grey



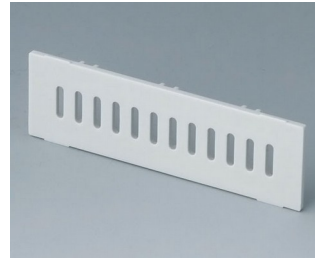
B6608161
Terminal guards, high
PC (UL 94 V-0)
light grey



B6608162
Terminal guards, high
PC (UL 94 V-0)
light grey



B6608163
Terminal guards, high
PC (UL 94 V-0)
light grey



B6608191
Partition plate
PC (UL 94 V-0)
light grey

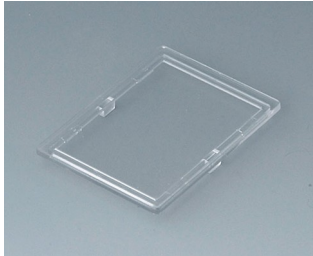
Accessory "screws"



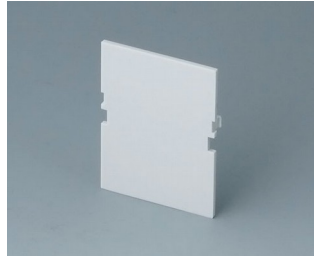
A0305031
Self-tapping screws 2.5 x 6 mm
(PZ1)

RAILTEC B

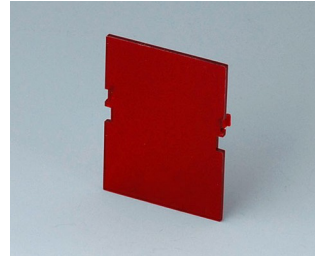
Accessory



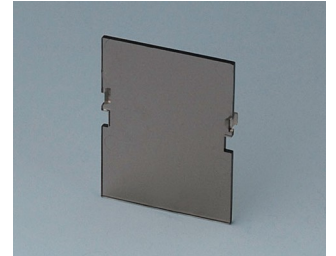
B6601100
Lid, 2 modules
PC (UL 94 V-0)
transparent



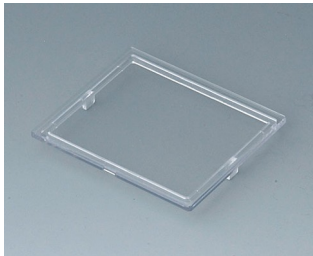
B6601180
Front panel, 2 modules, Vers. VI
PC (UL 94 V-0)
light grey
32x42mm



B6601480
Front panel, 2 modules, Vers. VI
PC (UL 94 V-0)
red transparent
32x42mm



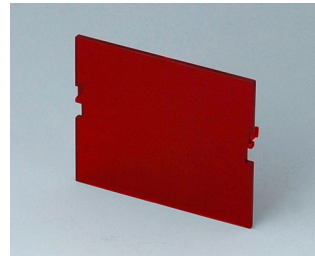
B6601580
Front panel, 2 modules, Vers. VI
PC (UL 94 V-0)
smoked glass
32x42mm



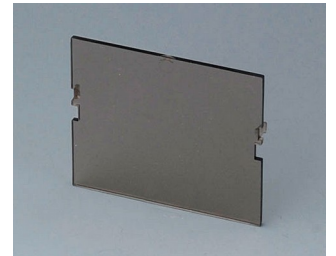
B6602100
Lid, 3 modules
PC (UL 94 V-0)
transparent



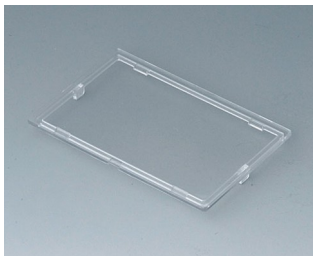
B6602180
Front panel, 3 modules, Vers. VI
PC (UL 94 V-0)
light grey
49x42mm



B6602480
Front panel, 3 modules, Vers. VI
PC (UL 94 V-0)
red transparent
49x42mm



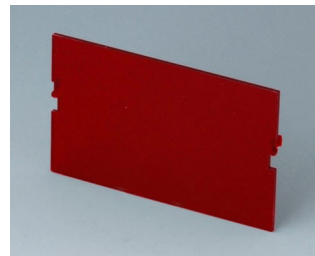
B6602580
Front panel, 3 modules, Vers. VI
PC (UL 94 V-0)
smoked glass
42x49mm



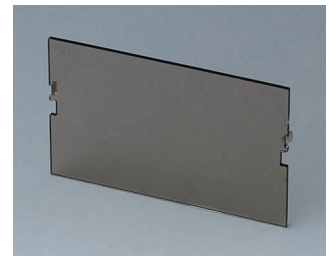
B6603100
Lid, 4 modules
PC (UL 94 V-0)
transparent



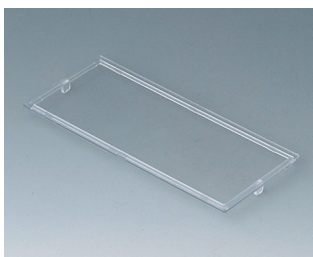
B6603180
Front panel, 4 modules, Vers. VI
PC (UL 94 V-0)
light grey
67x42mm



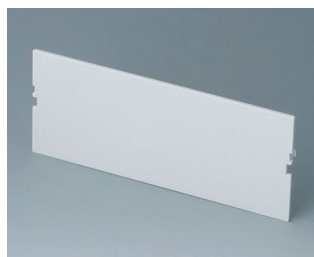
B6603480
Front panel, 4 modules, Vers. VI
PC (UL 94 V-0)
red transparent
67x42mm



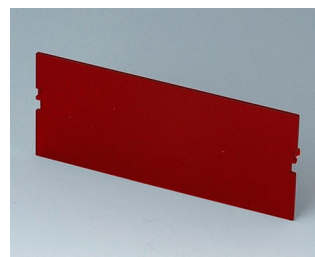
B6603580
Front panel, 4 modules, Vers. VI
PC (UL 94 V-0)
smoked glass
67x42mm



B6604100
Lid, 6 modules
PC (UL 94 V-0)
transparent



B6604180
Front panel, 6 modules, Vers. VI
PC (UL 94 V-0)
light grey
102x42mm



B6604480
Front panel, 6 modules, Vers. VI
PC (UL 94 V-0)
red transparent
102x42mm

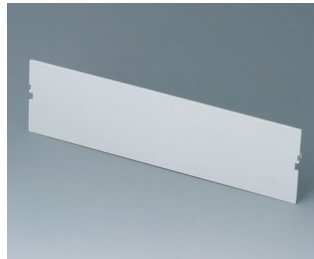


B6604580
Front panel, 6 modules, Vers. VI
PC (UL 94 V-0)
smoked glass
102x42mm

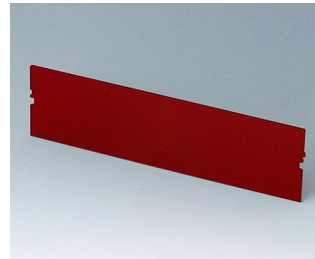
RAILTEC B



B6605100
 Lid, 9 modules
 PC (UL 94 V-0)
 transparent



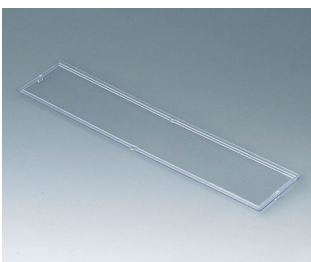
B6605180
 Front panel, 9 modules, Vers. VI
 PC (UL 94 V-0)
 light grey
 155x42mm



B6605480
 Front panel, 9 modules, Vers. VI
 PC (UL 94 V-0)
 red transparent
 155x42mm



B6605580
 Front panel, 9 modules, Vers. VI
 PC (UL 94 V-0)
 smoked glass
 155x42mm



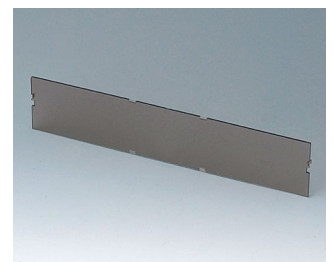
B6606100
 Lid, 12 modules
 PC (UL 94 V-0)
 transparent



B6606180
 Front panel, 12 modules, Vers. VI
 PC (UL 94 V-0)
 light grey
 206x42mm



B6606480
 Front panel, 12 modules, Vers. VI
 PC (UL 94 V-0)
 red transparent
 206x42mm



B6606580
 Front panel, 12 modules, Vers. VI
 PC (UL 94 V-0)
 smoked glass
 206x42mm

Salvo modifche tecniche. © OKW Gehäusesysteme, Buchen/Germania.