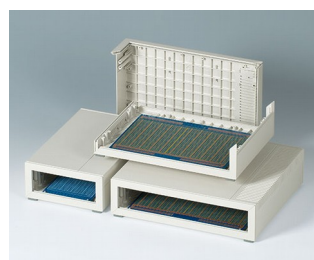


MEDITEC

Duże obudowy do urządzeń

MEDITEC charakteryzuje się nowoczesnym, stylowym i funkcjonalnym wzorem, który idealnie nadaje się do obudowy współczesnego sprzętu elektronicznego, wysokiej jakości.

- stylowy i funkcjonalny design
- uniwersalna konstrukcja do aplikacji na blat, na ścianę i przenośnie
- solidna konstrukcja ze wzmocnieniem za pomocą żeber
- łatwy montaż
- cztery rozmiary zgodne z PCB Eurocard, podwójnym i rozszerzonym
- dwie standardowe wysokości, zwiększone przez dodanie paneli bocznych
- ergonomiczny pochyły panel sterowania; podczas użycia paneli bocznych należy zamówić dodatkowo zaślepkę frontową
- plastikowe przednie i tylne panele są zrobione w identycznych wykroczeniach powierzchni dzięki czemu są łatwe w obróbce
- wciskane panele boczne z/bez otworów wentylacyjnych w kolorze lagoon green, ukryte miejsca montażowe, inne kolory na zamówienie
- cztery przykręcane nóżki antypoślizgowe
- opcjonalne mocowanie ściennie
- wersje z uchwytem; do zastosowań przenośnych, w razie potrzeby mechanizm umożliwia ustawienie wygodnego kąta, w zakresie 30 °
- wewnętrzne słupki do montażu PCB itp.



MEDITEC

Aplikacje i przykłady

- Medycyna, zdrowie i laboratoryjne urządzenia
- Sprzężenie zwrotne
- Urządzenia i systemy pomiarowe
- Peryferia sterujące, modemy oraz interfejsy
- Komunikacja i technologie sieciowe
- Zbieranie danych



amicOx pulse oximeter



Dry milling unit for foot care



NeurOne Tesla EEG System



Pneumatic Lithotripter System

Opcje dostosowywania

Czego potrzebujesz do spersonalizowania, swojego produktu? Dostarczamy obudowy i pokręta wraz ze wszystkimi niezbędnymi wymaganymi modyfikacjami.

Opcje dostosowywania dla Meditec



Obróbka obudów



Lakierowanie



Nadruk



Znakowanie laserowe



Specjalne materiały



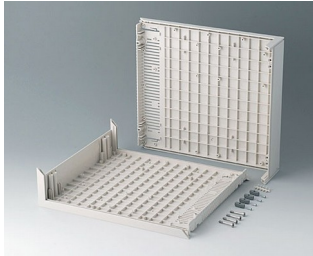
Powłoka EMC



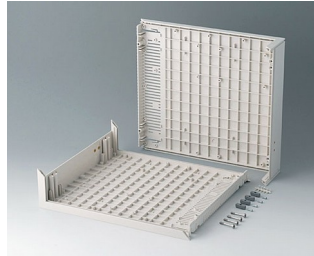
Instalacja / montaż

MEDITEC

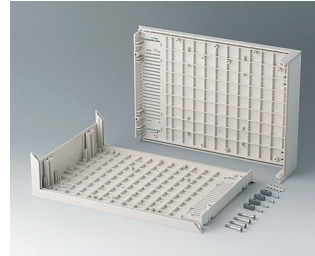
Wersje



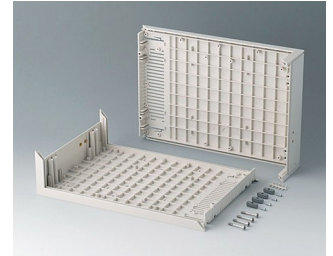
B2010007
L-shells D 220, without holes
ABS (UL 94 HB)
off-white RAL 9002
290x260x74mm



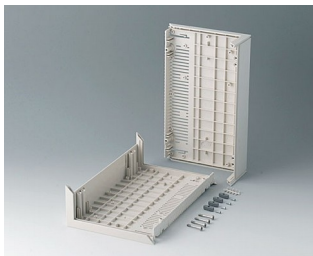
B2010107
L-shells D 220, with holes for
handle
ABS (UL 94 HB)
off-white RAL 9002
290x260x74mm



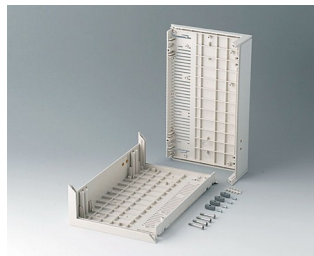
B2011007
L-shells D 160, without holes
ABS (UL 94 HB)
off-white RAL 9002
290x200x74mm



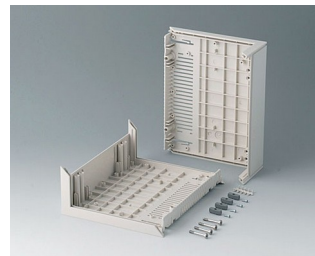
B2011107
L-shells D 160, with holes for
handle
ABS (UL 94 HB)
off-white RAL 9002
290x200x74mm



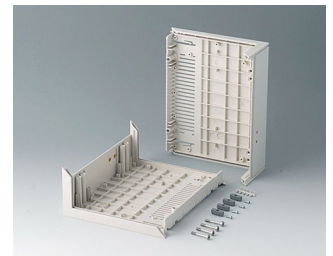
B2012007
L-shells E 220, without holes
ABS (UL 94 HB)
off-white RAL 9002
160x260x74mm



B2012107
L-shells E 220, with holes for
handle
ABS (UL 94 HB)
off-white RAL 9002
160x260x74mm



B2013007
L-shells E 160, without holes
ABS (UL 94 HB)
off-white RAL 9002
160x200x74mm



B2013107
L-shells E 160, with holes for
handle
ABS (UL 94 HB)
off-white RAL 9002
160x200x74mm



B2210005
MEDITEC D 220, without handle
bar
ABS (UL 94 HB)
off-white RAL 9002
290x260x74mm
IP 40



B2210007
MEDITEC D 220, without handle
bar
ABS (UL 94 HB)
off-white RAL 9002
290x260x74mm
IP 40



B2210015
MEDITEC D 220, without handle
bar
ABS (UL 94 HB)
off-white RAL 9002
290x260x74mm
IP 40



B2210017
MEDITEC D 220, without handle
bar
ABS (UL 94 HB)
off-white RAL 9002
290x260x74mm
IP 40

MEDITEC



B2210105
MEDITEC D 220, with handle bar
ABS (UL 94 HB)
off-white RAL 9002
290x260x74mm
IP 40



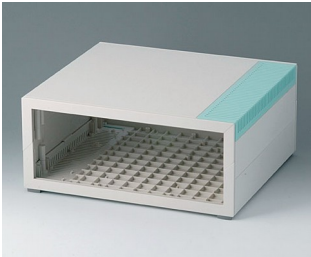
B2210107
MEDITEC D 220, with handle bar
ABS (UL 94 HB)
off-white RAL 9002
290x260x74mm
IP 40



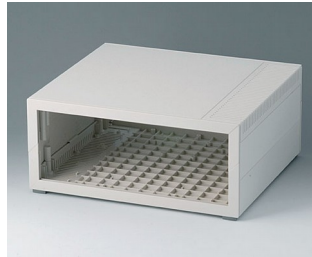
B2210115
MEDITEC D 220, with handle bar
ABS (UL 94 HB)
off-white RAL 9002
290x260x74mm
IP 40



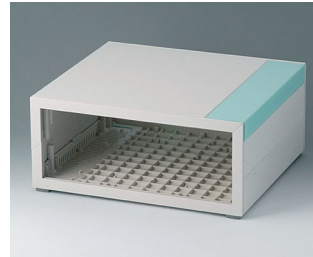
B2210117
MEDITEC D 220, with handle bar
ABS (UL 94 HB)
off-white RAL 9002
290x260x74mm
IP 40



B2210205
MEDITEC D 220, without handle bar
ABS (UL 94 HB)
off-white RAL 9002
290x260x124mm
IP 40



B2210207
MEDITEC D 220, without handle bar
ABS (UL 94 HB)
off-white RAL 9002
290x260x124mm
IP 40



B2210215
MEDITEC D 220, without handle bar
ABS (UL 94 HB)
off-white RAL 9002
290x260x124mm
IP 40



B2210217
MEDITEC D 220, without handle bar
ABS (UL 94 HB)
off-white RAL 9002
290x260x124mm
IP 40



B2210305
MEDITEC D 220, with handle bar
ABS (UL 94 HB)
off-white RAL 9002
290x260x124mm
IP 40



B2210307
MEDITEC D 220, with handle bar
ABS (UL 94 HB)
off-white RAL 9002
290x260x124mm
IP 40



B2210315
MEDITEC D 220, with handle bar
ABS (UL 94 HB)
off-white RAL 9002
290x260x124mm
IP 40



B2210317
MEDITEC D 220, with handle bar
ABS (UL 94 HB)
off-white RAL 9002
290x260x124mm
IP 40



B2211005
MEDITEC D 160, without handle bar
ABS (UL 94 HB)
off-white RAL 9002
290x200x74mm
IP 40



B2211007
MEDITEC D 160, without handle bar
ABS (UL 94 HB)
off-white RAL 9002
290x200x74mm
IP 40



B2211015
MEDITEC D 160, without handle bar
ABS (UL 94 HB)
off-white RAL 9002
290x200x74mm
IP 40



B2211017
MEDITEC D 160, without handle bar
ABS (UL 94 HB)
off-white RAL 9002
290x200x74mm
IP 40

MEDITEC



B2211105
MEDITEC D 160, with handle bar
ABS (UL 94 HB)
off-white RAL 9002
290x200x74mm
IP 40



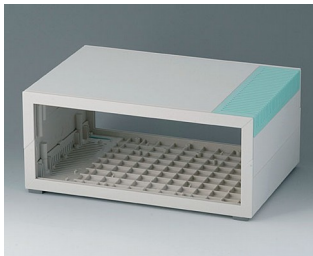
B2211107
MEDITEC D 160, with handle bar
ABS (UL 94 HB)
off-white RAL 9002
290x200x74mm
IP 40



B2211115
MEDITEC D 160, with handle bar
ABS (UL 94 HB)
off-white RAL 9002
290x200x74mm
IP 40



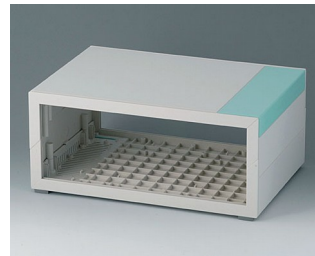
B2211117
MEDITEC D 160, with handle bar
ABS (UL 94 HB)
off-white RAL 9002
290x200x74mm
IP 40



B2211205
MEDITEC D 160, without handle bar
ABS (UL 94 HB)
off-white RAL 9002
290x200x124mm
IP 40



B2211207
MEDITEC D 160, without handle bar
ABS (UL 94 HB)
off-white RAL 9002
290x200x124mm
IP 40



B2211215
MEDITEC D 160, without handle bar
ABS (UL 94 HB)
off-white RAL 9002
290x200x124mm
IP 40



B2211217
MEDITEC D 160, without handle bar
ABS (UL 94 HB)
off-white RAL 9002
290x200x124mm
IP 40



B2211305
MEDITEC D 160, with handle bar
ABS (UL 94 HB)
off-white RAL 9002
290x200x124mm
IP 40



B2211307
MEDITEC D 160, with handle bar
ABS (UL 94 HB)
off-white RAL 9002
290x200x124mm
IP 40



B2211315
MEDITEC D 160, with handle bar
ABS (UL 94 HB)
off-white RAL 9002
290x200x124mm
IP 40



B2211317
MEDITEC D 160, with handle bar
ABS (UL 94 HB)
off-white RAL 9002
290x200x124mm
IP 40



B2212005
MEDITEC E 220, without handle bar
ABS (UL 94 HB)
off-white RAL 9002
160x260x74mm
IP 40



B2212007
MEDITEC E 220, without handle bar
ABS (UL 94 HB)
off-white RAL 9002
160x260x74mm
IP 40



B2212015
MEDITEC E 220, without handle bar
ABS (UL 94 HB)
off-white RAL 9002
160x260x74mm
IP 40



B2212017
MEDITEC E 220, without handle bar
ABS (UL 94 HB)
off-white RAL 9002
160x260x74mm
IP 40

MEDITEC



B2212105
MEDITEC E 220, with handle bar
ABS (UL 94 HB)
off-white RAL 9002
160x260x74mm
IP 40



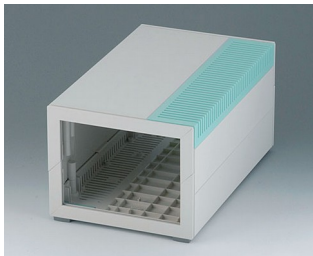
B2212107
MEDITEC E 220, with handle bar
ABS (UL 94 HB)
off-white RAL 9002
160x260x74mm
IP 40



B2212115
MEDITEC E 220, with handle bar
ABS (UL 94 HB)
off-white RAL 9002
160x260x74mm
IP 40



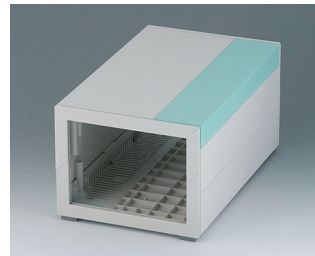
B2212117
MEDITEC E 220, with handle bar
ABS (UL 94 HB)
off-white RAL 9002
160x260x74mm
IP 40



B2212205
MEDITEC E 220, without handle bar
ABS (UL 94 HB)
off-white RAL 9002
160x260x124mm
IP 40



B2212207
MEDITEC E 220, without handle bar
ABS (UL 94 HB)
off-white RAL 9002
160x260x124mm
IP 40



B2212215
MEDITEC E 220, without handle bar
ABS (UL 94 HB)
off-white RAL 9002
160x260x124mm
IP 40



B2212217
MEDITEC E 220, without handle bar
ABS (UL 94 HB)
off-white RAL 9002
160x260x124mm
IP 40



B2212305
MEDITEC E 220, with handle bar
ABS (UL 94 HB)
off-white RAL 9002
160x260x124mm
IP 40



B2212307
MEDITEC E 220, with handle bar
ABS (UL 94 HB)
off-white RAL 9002
160x260x124mm
IP 40



B2212315
MEDITEC E 220, with handle bar
ABS (UL 94 HB)
off-white RAL 9002
160x260x124mm
IP 40



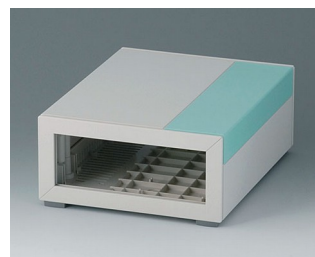
B2212317
MEDITEC E 220, with handle bar
ABS (UL 94 HB)
off-white RAL 9002
160x260x124mm
IP 40



B2213005
MEDITEC E 160, without handle bar
ABS (UL 94 HB)
off-white RAL 9002
160x200x74mm
IP 40



B2213007
MEDITEC E 160, without handle bar
ABS (UL 94 HB)
off-white RAL 9002
160x200x74mm
IP 40



B2213015
MEDITEC E 160, without handle bar
ABS (UL 94 HB)
off-white RAL 9002
160x200x74mm
IP 40



B2213017
MEDITEC E 160, without handle bar
ABS (UL 94 HB)
off-white RAL 9002
160x200x74mm
IP 40

MEDITEC



B2213105
 MEDITEC E 160, with handle
 bar
 ABS (UL 94 HB)
 off-white RAL 9002
 160x200x74mm
 IP 40



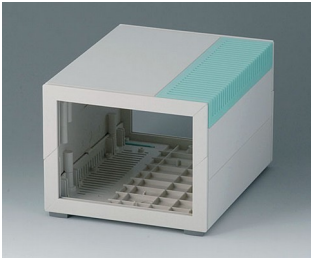
B2213107
 MEDITEC E 160, with handle
 bar
 ABS (UL 94 HB)
 off-white RAL 9002
 160x200x74mm
 IP 40



B2213115
 MEDITEC E 160, with handle
 bar
 ABS (UL 94 HB)
 off-white RAL 9002
 160x200x74mm
 IP 40



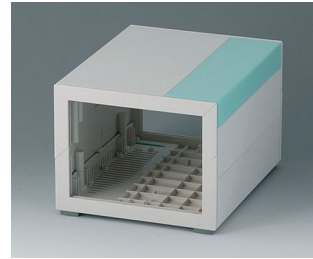
B2213117
 MEDITEC E 160, with handle
 bar
 ABS (UL 94 HB)
 off-white RAL 9002
 160x200x74mm
 IP 40



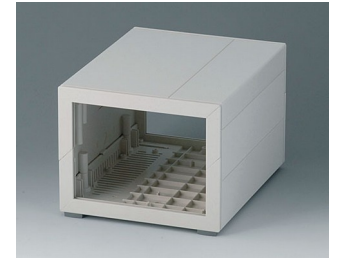
B2213205
 MEDITEC E 160, without handle
 bar
 ABS (UL 94 HB)
 off-white RAL 9002
 160x200x124mm
 IP 40



B2213207
 MEDITEC E 160, without handle
 bar
 ABS (UL 94 HB)
 off-white RAL 9002
 160x200x124mm
 IP 40



B2213215
 MEDITEC E 160, without handle
 bar
 ABS (UL 94 HB)
 off-white RAL 9002
 160x200x124mm
 IP 40



B2213217
 MEDITEC E 160, without handle
 bar
 ABS (UL 94 HB)
 off-white RAL 9002
 160x200x124mm
 IP 40



B2213305
 MEDITEC E 160, with handle
 bar
 ABS (UL 94 HB)
 off-white RAL 9002
 160x200x124mm
 IP 40



B2213307
 MEDITEC E 160, with handle
 bar
 ABS (UL 94 HB)
 off-white RAL 9002
 160x200x124mm
 IP 40



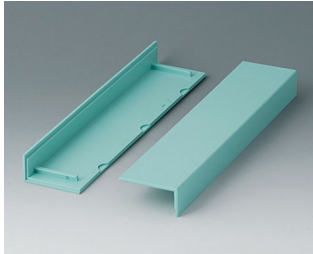
B2213315
 MEDITEC E 160, with handle
 bar
 ABS (UL 94 HB)
 off-white RAL 9002
 160x200x124mm
 IP 40



B2213317
 MEDITEC E 160, with handle
 bar
 ABS (UL 94 HB)
 off-white RAL 9002
 160x200x124mm
 IP 40

MEDITEC

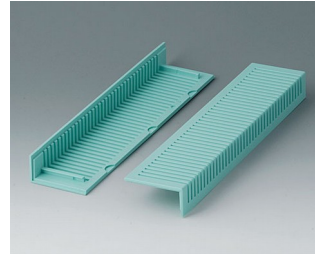
System components to complete



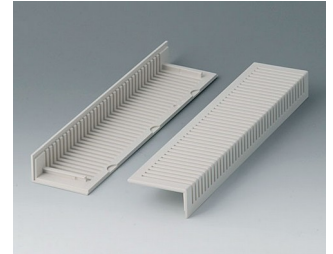
B2020005
Side trims 220, without ventilation
ABS
lagoon



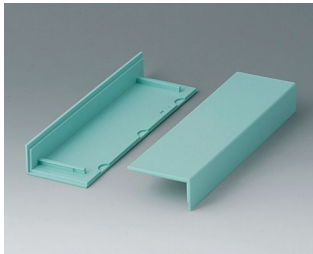
B2020007
Side trims 220, without ventilation
ABS (UL 94 HB)
off-white RAL 9002



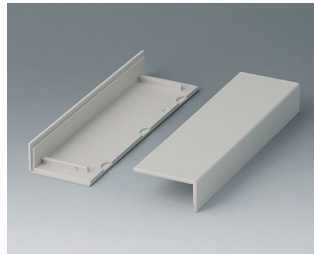
B2021005
Side trims 220, with ventilation
ABS
lagoon



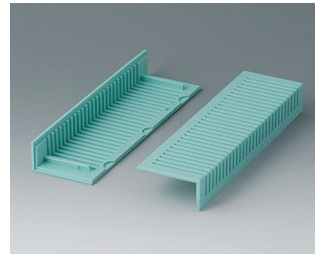
B2021007
Side trims 220, with ventilation
ABS (UL 94 HB)
off-white RAL 9002



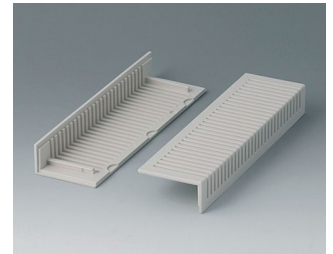
B2022005
Side trims 160, without ventilation
ABS
lagoon



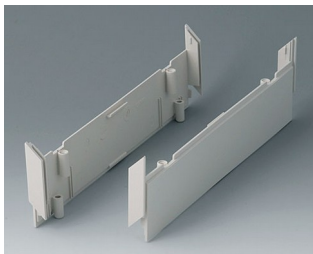
B2022007
Side trims 160, without ventilation
ABS (UL 94 HB)
off-white RAL 9002



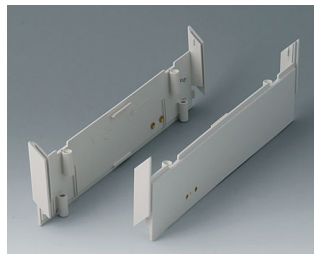
B2023005
Side trims 160, with ventilation
ABS
lagoon



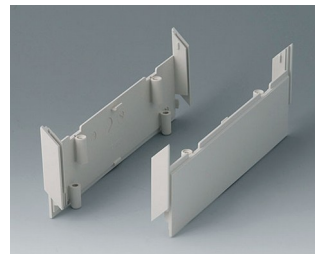
B2023007
Side trims 160, with ventilation
ABS (UL 94 HB)
off-white RAL 9002



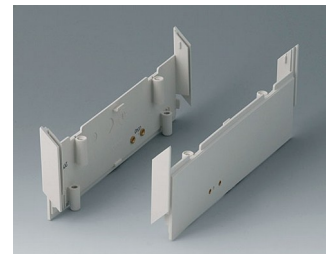
B2030007
Side panels 220, without holes
ABS (UL 94 HB)
off-white RAL 9002



B2030107
Side panels 220, with holes for handle
ABS (UL 94 HB)
off-white RAL 9002



B2031007
Side panels 160, without holes
ABS (UL 94 HB)
off-white RAL 9002



B2031107
Side panels 160, with holes for handle
ABS (UL 94 HB)
off-white RAL 9002



B2116507
Handle bar E
PA 6
off-white RAL 9002



B2129507
Handle bar D
PA 6
off-white RAL 9002



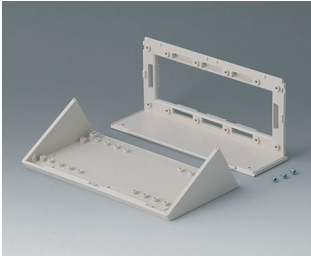
B2133012
Wall mounting brackets
PA 6
volcano



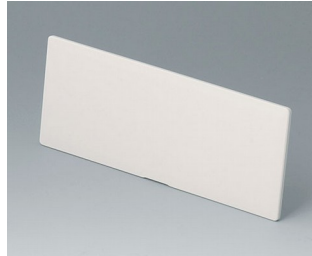
B2135017
Connectors
ABS (UL 94 HB)
off-white RAL 9002

MEDITEC

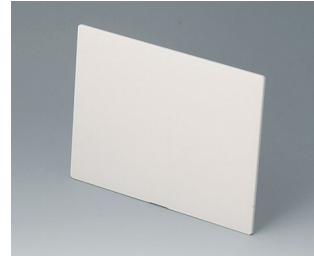
Accessory to complete



B2116007
Sloping control panel E
ABS (UL 94 HB)
off-white RAL 9002



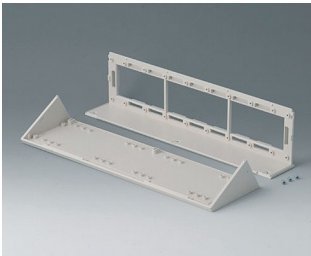
B2116307
Front / rear panel E, flat
ABS (UL 94 HB)
off-white RAL 9002
141,6x55,6x3mm



B2116407
Front / rear panel Z1
ABS (UL 94 HB)
off-white RAL 9002
141,6x105,6x3mm



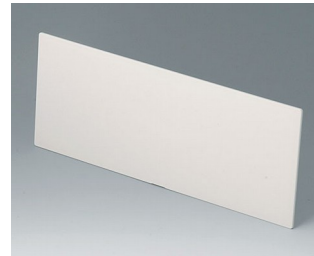
B2116707
Infill panel E
ABS (UL 94 HB)
off-white RAL 9002
142x55x5mm



B2129007
Sloping control panel D
ABS (UL 94 HB)
off-white RAL 9002



B2129307
Front / rear panel D, flat
ABS (UL 94 HB)
off-white RAL 9002
271,6x55,6x3mm



B2129407
Front / rear panel Z1
ABS (UL 94 HB)
off-white RAL 9002
271,6x105,6x3mm



B2129707
Infill panel D
ABS (UL 94 HB)
off-white RAL 9002
272x55x5mm

Accessory "wall/holder"



B2133012
Wall mounting brackets
PA 6
volcano



B2134012
Stacking elements
PA 6
volcano

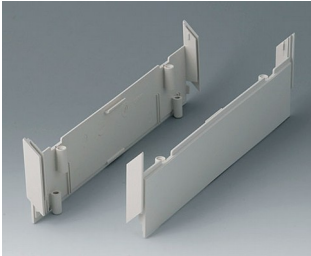
Accessory "screws"



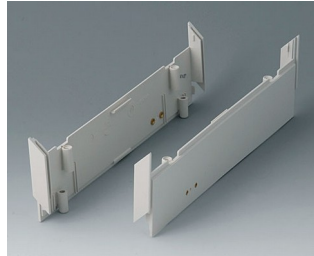
A9199008
Set of screws

MEDITEC

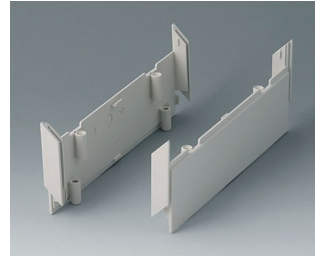
Accessory



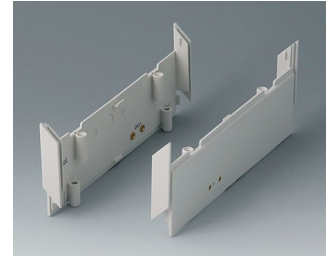
B2030007
Side panels 220, without holes
ABS (UL 94 HB)
off-white RAL 9002



B2030107
Side panels 220, with holes for
handle
ABS (UL 94 HB)
off-white RAL 9002



B2031007
Side panels 160, without holes
ABS (UL 94 HB)
off-white RAL 9002



B2031107
Side panels 160, with holes for
handle
ABS (UL 94 HB)
off-white RAL 9002



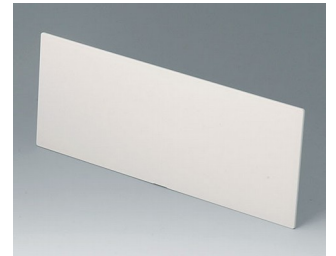
B2116407
Front / rear panel Z1
ABS (UL 94 HB)
off-white RAL 9002
141,6x105,6x3mm



B2116507
Handle bar E
PA 6
off-white RAL 9002



B2116707
Infill panel E
ABS (UL 94 HB)
off-white RAL 9002
142x55x5mm



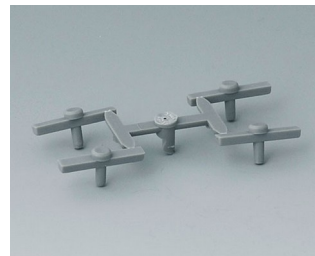
B2129407
Front / rear panel Z1
ABS (UL 94 HB)
off-white RAL 9002
271,6x105,6x3mm



B2129507
Handle bar D
PA 6
off-white RAL 9002



B2129707
Infill panel D
ABS (UL 94 HB)
off-white RAL 9002
272x55x5mm



B2134012
Stacking elements
PA 6
volcano



B2135017
Connectors
ABS (UL 94 HB)
off-white RAL 9002

Subject to technical modification without notice. © by OKW Gehäusesysteme, Buchen/Germany.