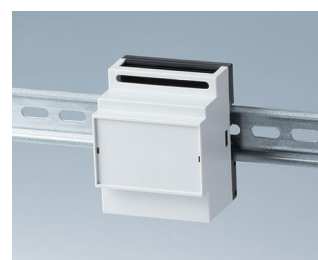
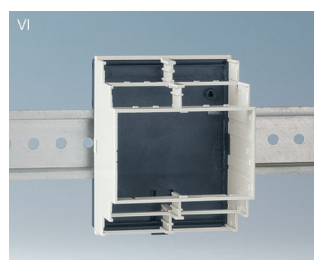
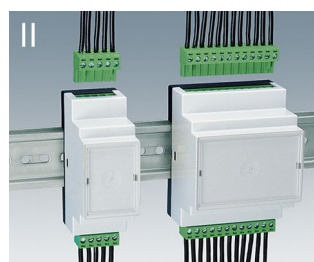
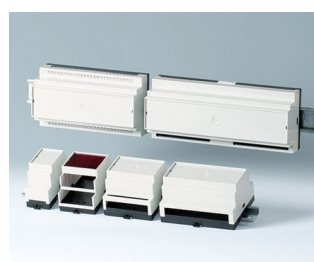
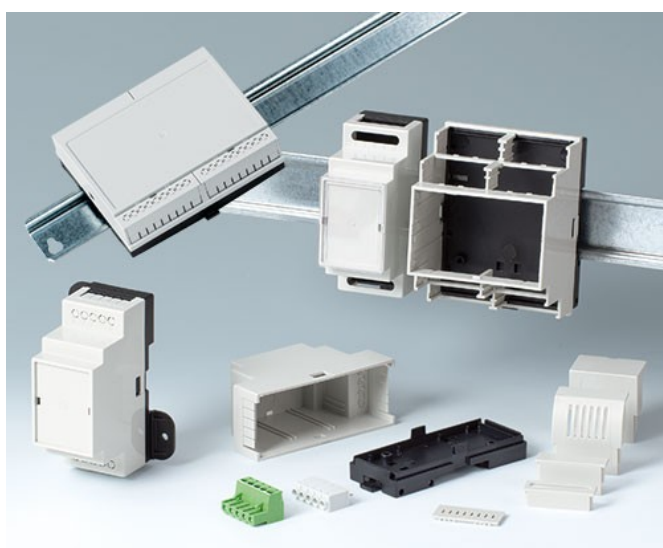


RAILTEC B

Wszechstronne obudowy na szynę DIN

Nasza seria obudów RAILTEC B przewiduje szybki i prosty montaż do standardowej szyny DIN EN 60715 TH35.

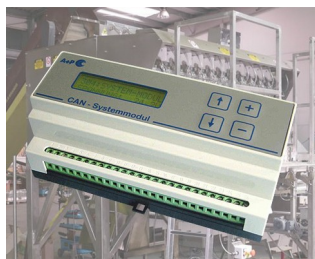
- sześć rozmiarów (2 do 12 modułów szerokości) zgodne z DIN 43880
- cztery rozmiary (2, 4, 6 & 9 modułów szerokości) z niskim profilem - **NOWOŚĆ**: 2 wersje
- chroniony przez VBG 4 i IEC 529/DIN VDE 0470-1
- ogniotrwały materiał (UL 94 V-0)
- **wersja I**: dla terminali PCB raster 5.0/5.08 mm
- **wersja II**: dla pinów w rastrze 5.0/5.08 mm
- **wersja III**: zamknięta obudowa do złącz zewnętrznych, D-SUB, itp.
- **wersja IV**: dla kontaktów PCB raster 5.0/5.08 mm (1 rząd)
- **wersja V**: z perforacją wyłamywaną w rastrze 5.0 mm
- **wersja VI**: obudowa otwarta do dopasowania różnych kombinacji osłon kontaktów oraz płytek oddzielających: opcjonalnie 1 lub 2 poziomy podłączenia
- pokrywa KNX do dopasowania 2 i 4 modułów serii IV i płaskich paneli górnych
- pasujące do szyn DIN EN 60715 TH35 lub bezpośrednio do montażu na ścianie
- z/bez otworów wentylacyjnych do odprowadzania ciepła
- elastyczny montaż: pozycjonowanie PCB we wszystkich 3 kierunkach; baza z kołkami mocującymi, część górna z przewodnikami
- klips na szynę DIN w bazie
- transparentna pokrywa do ochrony wyświetlacza i elementów operacyjnych
- klasa szczelności IP 40



RAILTEC B

Aplikacje i przykłady

- Uniwersalne zastosowania, odpowiadające przepisom przemysłu maszynowego i samochodowego
- Smart Factory / Industry 4.0
- Wyposażenie techniczne automatyki budynkowej i SMART-HOME
- Specjalnie dla urządzeń sterujących np. oświetleniowych



CAN BUS system module for packaging machines



Earthfault detection and short-circuit indicator



Industrial VDSL2/ADSL2 modems



Monitoring of electrical variables



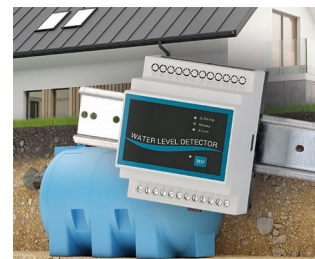
Power measuring device for energy analysis



Remote meter for condition monitoring



Smart meter for electricity consumption



Water level detector

Opcje dostosowywania

Czego potrzebujesz do spersonalizowania, swojego produktu? Dostarczamy obudowy i pokręta wraz ze wszystkimi niezbędnymi wymaganymi modyfikacjami.

Opcje dostosowywania dla Railtec B



Obróbka obudów



Lakierowanie



Nadruk



Znakowanie laserowe



Folie dekoracyjne



Instalacja / montaż

RAILTEC B

Wersje



B6501110
RAILTEC B, 2 modules, Vers. V
PC (UL 94 V-0)
light grey RAL 7035
35x86x58mm



B6501111
RAILTEC B, 2 modules, Vers. I
PC (UL 94 V-0)
light grey RAL 7035
35x86x58mm



B6501112
RAILTEC B, 2 modules, Vers. II
PC (UL 94 V-0)
light grey RAL 7035
35x86x58mm



B6501113
RAILTEC B, 2 modules, Vers. III
PC (UL 94 V-0)
light grey RAL 7035
35x86x58mm



B6501114
RAILTEC B, 2 modules, Vers. I
PC (UL 94 V-0)
light grey RAL 7035
35x86x58mm



B6501115
RAILTEC B, 2 modules, Vers. II
PC (UL 94 V-0)
light grey RAL 7035
35x86x58mm



B6501116
RAILTEC B, 2 modules, Vers. III
PC (UL 94 V-0)
light grey RAL 7035
35x86x58mm



B6501117
RAILTEC B, 2 modules, Vers. IV
PC (UL 94 V-0)
light grey RAL 7035
35x86x58mm



B6501118
RAILTEC B, 2 modules, Vers. IV
PC (UL 94 V-0)
light grey RAL 7035
35x86x58mm



B6501119
RAILTEC B, 2 modules, Vers. V
PC (UL 94 V-0)
light grey RAL 7035
35x86x58mm



B6501121
RAILTEC B, 2 modules, Vers. VI
PC (UL 94 V-0)
light grey RAL 7035
35x90x58mm



B6501223
RAILTEC B, 2 modules, Vers. III
low profile
PC (UL 94 V-0)
light grey RAL 7035
35x86x31,25mm



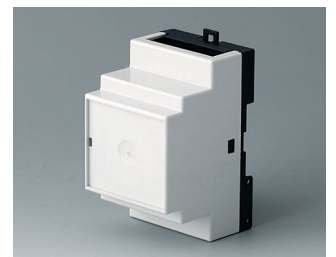
B6501229
RAILTEC B, 2 modules, Vers.
low profile
PC (UL 94 V-0)
light grey RAL 7035
35x89,6x31,25mm



B6502110
RAILTEC B, 3 modules, Vers. V
PC (UL 94 V-0)
light grey RAL 7035
52,5x86x58mm

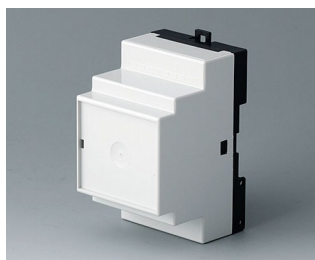


B6502111
RAILTEC B, 3 modules, Vers. I
PC (UL 94 V-0)
light grey RAL 7035
52,5x86x58mm



B6502112
RAILTEC B, 3 modules, Vers. II
PC (UL 94 V-0)
light grey RAL 7035
52,5x86x58mm

RAILTEC B



B6502113
RAILTEC B, 3 modules, Vers. III
PC (UL 94 V-0)
light grey RAL 7035
52,5x86x58mm



B6502114
RAILTEC B, 3 modules, Vers. I
PC (UL 94 V-0)
light grey RAL 7035
52,5x86x58mm



B6502115
RAILTEC B, 3 modules, Vers. II
PC (UL 94 V-0)
light grey RAL 7035
52,5x86x58mm



B6502116
RAILTEC B, 3 modules, Vers. III
PC (UL 94 V-0)
light grey RAL 7035
52,5x86x58mm



B6502117
RAILTEC B, 3 modules, Vers. IV
PC (UL 94 V-0)
light grey RAL 7035
52,5x86x58mm



B6502118
RAILTEC B, 3 modules, Vers. IV
PC (UL 94 V-0)
light grey RAL 7035
52,5x86x58mm



B6502119
RAILTEC B, 3 modules, Vers. V
PC (UL 94 V-0)
light grey RAL 7035
52,5x86x58mm



B6502121
RAILTEC B, 3 modules, Vers. VI
PC (UL 94 V-0)
light grey RAL 7035
52,5x90x58mm



B6503110
RAILTEC B, 4 modules, Vers. V
PC (UL 94 V-0)
light grey RAL 7035
70x86x58mm



B6503111
RAILTEC B, 4 modules, Vers. I
PC (UL 94 V-0)
light grey RAL 7035
70x86x58mm



B6503112
RAILTEC B, 4 modules, Vers. II
PC (UL 94 V-0)
light grey RAL 7035
70x86x58mm



B6503113
RAILTEC B, 4 modules, Vers. III
PC (UL 94 V-0)
light grey RAL 7035
70x86x58mm



B6503114
RAILTEC B, 4 modules, Vers. I
PC (UL 94 V-0)
light grey RAL 7035
70x86x58mm



B6503115
RAILTEC B, 4 modules, Vers. II
PC (UL 94 V-0)
light grey RAL 7035
70x86x58mm



B6503116
RAILTEC B, 4 modules, Vers. III
PC (UL 94 V-0)
light grey RAL 7035
70x86x58mm



B6503117
RAILTEC B, 4 modules, Vers. IV
PC (UL 94 V-0)
light grey RAL 7035
70x86x58mm

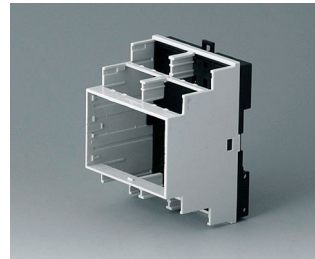
RAILTEC B



B6503118
RAILTEC B, 4 modules, Vers. IV
PC (UL 94 V-0)
light grey RAL 7035
70x86x58mm



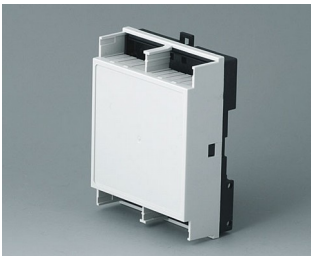
B6503119
RAILTEC B, 4 modules, Vers. V
PC (UL 94 V-0)
light grey RAL 7035
70x86x58mm



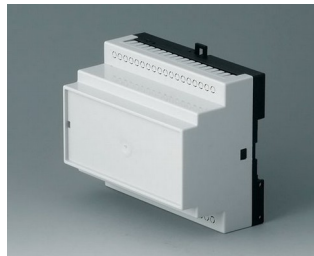
B6503121
RAILTEC B, 4 modules, Vers. VI
PC (UL 94 V-0)
light grey RAL 7035
70x90x58mm



B6503223
RAILTEC B, 4 modules, Vers. III
low profile
PC (UL 94 V-0)
light grey RAL 7035
70x86x31,25mm



B6503229
RAILTEC B, 4 modules, Vers.
low profile
PC (UL 94 V-0)
light grey RAL 7035
70x89,6x31,25mm



B6504110
RAILTEC B, 6 modules, Vers. V
PC (UL 94 V-0)
light grey RAL 7035
105x86x59mm



B6504111
RAILTEC B, 6 modules, Vers. I
PC (UL 94 V-0)
light grey RAL 7035
105x86x59mm



B6504112
RAILTEC B, 6 modules, Vers. II
PC (UL 94 V-0)
light grey RAL 7035
105x86x59mm



B6504113
RAILTEC B, 6 modules, Vers. III
PC (UL 94 V-0)
light grey RAL 7035
105x86x59mm



B6504114
RAILTEC B, 6 modules, Vers. I
PC (UL 94 V-0)
light grey RAL 7035
105x86x59mm



B6504115
RAILTEC B, 6 modules, Vers. II
PC (UL 94 V-0)
light grey RAL 7035
105x86x59mm



B6504116
RAILTEC B, 6 modules, Vers. III
PC (UL 94 V-0)
light grey RAL 7035
105x86x59mm



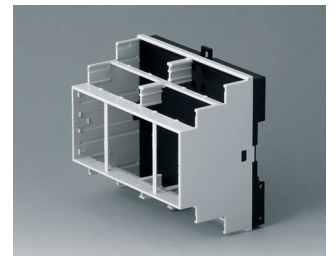
B6504117
RAILTEC B, 6 modules, Vers. IV
PC (UL 94 V-0)
light grey RAL 7035
105x86x59mm



B6504118
RAILTEC B, 6 modules, Vers. IV
PC (UL 94 V-0)
light grey RAL 7035
105x86x59mm



B6504119
RAILTEC B, 6 modules, Vers. V
PC (UL 94 V-0)
light grey RAL 7035
105x86x59mm



B6504121
RAILTEC B, 6 modules, Vers. VI
PC (UL 94 V-0)
light grey RAL 7035
105x90x58mm

RAILTEC B



B6504223
RAILTEC B, 6 modules, Vers. III
low profile
PC (UL 94 V-0)
light grey RAL 7035
105x86x31,25mm



B6504229
RAILTEC B, 6 modules, Vers.
low profile
PC (UL 94 V-0)
light grey RAL 7035
105x89,6x31,25mm



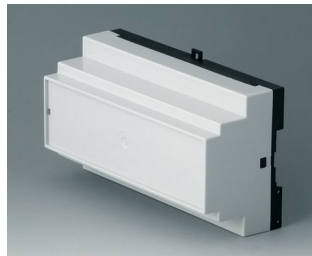
B6505110
RAILTEC B, 9 modules, Vers. V
PC (UL 94 V-0)
light grey RAL 7035
157x86x59mm



B6505111
RAILTEC B, 9 modules, Vers. I
PC (UL 94 V-0)
light grey RAL 7035
157x86x59mm



B6505112
RAILTEC B, 9 modules, Vers. II
PC (UL 94 V-0)
light grey RAL 7035
157x86x59mm



B6505113
RAILTEC B, 9 modules, Vers. III
PC (UL 94 V-0)
light grey RAL 7035
157x86x59mm



B6505114
RAILTEC B, 9 modules, Vers. I
PC (UL 94 V-0)
light grey RAL 7035
157x86x59mm



B6505115
RAILTEC B, 9 modules, Vers. II
PC (UL 94 V-0)
light grey RAL 7035
157x86x59mm



B6505116
RAILTEC B, 9 modules, Vers. III
PC (UL 94 V-0)
light grey RAL 7035
157x86x59mm



B6505117
RAILTEC B, 9 modules, Vers. IV
PC (UL 94 V-0)
light grey RAL 7035
157x86x59mm



B6505118
RAILTEC B, 9 modules, Vers. IV
PC (UL 94 V-0)
light grey RAL 7035
157x86x59mm



B6505119
RAILTEC B, 9 modules, Vers. V
PC (UL 94 V-0)
light grey RAL 7035
157x86x59mm



B6505121
RAILTEC B, 9 modules, Vers. VI
PC (UL 94 V-0)
light grey RAL 7035
157x90x58mm



B6505223
RAILTEC B, 9 modules, Vers. III
low profile
PC (UL 94 V-0)
light grey RAL 7035
157x86x31,25mm



B6505229
RAILTEC B, 9 modules, Vers.
low profile
PC (UL 94 V-0)
light grey RAL 7035
157,5x89,6x31,25mm

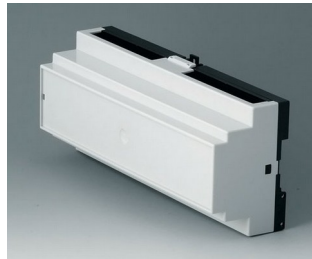


B6506110
RAILTEC B, 12 modules, Vers. V
PC (UL 94 V-0)
light grey RAL 7035
210x90x58mm

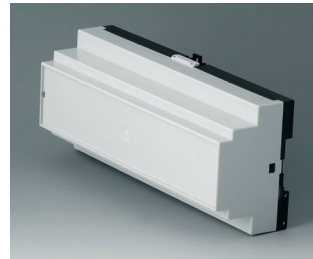
RAILTEC B



B6506111
RAILTEC B, 12 modules, Vers. I
PC (UL 94 V-0)
light grey RAL 7035
210x90x58mm



B6506112
RAILTEC B, 12 modules, Vers. II
PC (UL 94 V-0)
light grey RAL 7035
210x90x58mm



B6506113
RAILTEC B, 12 modules, Vers. III
PC (UL 94 V-0)
light grey RAL 7035
210x90x58mm



B6506114
RAILTEC B, 12 modules, Vers. I
PC (UL 94 V-0)
light grey RAL 7035
210x90x58mm



B6506115
RAILTEC B, 12 modules, Vers. II
PC (UL 94 V-0)
light grey RAL 7035
210x90x58mm



B6506116
RAILTEC B, 12 modules, Vers. III
PC (UL 94 V-0)
light grey RAL 7035
210x90x58mm



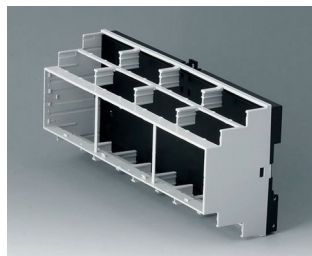
B6506117
RAILTEC B, 12 modules, Vers. IV
PC (UL 94 V-0)
light grey RAL 7035
210x90x58mm



B6506118
RAILTEC B, 12 modules, Vers. IV
PC (UL 94 V-0)
light grey RAL 7035
210x90x58mm



B6506119
RAILTEC B, 12 modules, Vers. V
PC (UL 94 V-0)
light grey RAL 7035
210x90x58mm



B6506121
RAILTEC B, 12 modules, Vers. VI
PC (UL 94 V-0)
light grey RAL 7035
210x90x58mm



B6511111
RAILTEC B, 2 modules, Vers. XI
PC (UL 94 V-0)
light grey RAL 7035
35x86x58mm



B6511112
RAILTEC B, 2 modules, Vers. XII
PC (UL 94 V-0)
light grey RAL 7035
35x86x58mm



B6511113
RAILTEC B, 2 modules, Vers. XIII
PC (UL 94 V-0)
light grey RAL 7035
35x86x58mm



B6513111
RAILTEC B, 4 modules, Vers. XI
PC (UL 94 V-0)
light grey RAL 7035
70x86x58mm



B6513112
RAILTEC B, 4 modules, Vers. XII
PC (UL 94 V-0)
light grey RAL 7035
70x86x58mm



B6513113
RAILTEC B, 4 modules, Vers. XIII
PC (UL 94 V-0)
light grey RAL 7035
70x86x58mm

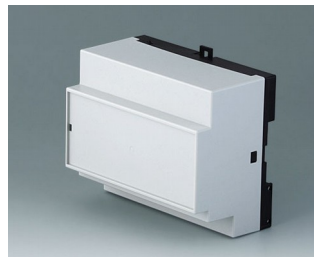
RAILTEC B



B6514111
RAILTEC B, 6 modules, Vers. XI
PC (UL 94 V-0)
light grey RAL 7035
105x86x59mm



B6514112
RAILTEC B, 6 modules, Vers. XII
PC (UL 94 V-0)
light grey RAL 7035
105x86x59mm



B6514113
RAILTEC B, 6 modules, Vers.
XIII
PC (UL 94 V-0)
light grey RAL 7035
105x86x59mm



B6515111
RAILTEC B, 9 modules, Vers. XI
PC (UL 94 V-0)
light grey RAL 7035
157x86x59mm



B6515112
RAILTEC B, 9 modules, Vers. XII
PC (UL 94 V-0)
light grey RAL 7035
157x86x59mm



B6515113
RAILTEC B, 9 modules, Vers.
XIII
PC (UL 94 V-0)
light grey RAL 7035
157x86x59mm

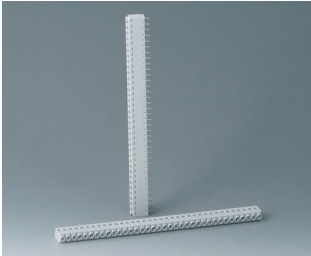
Accessory "wall/holder"



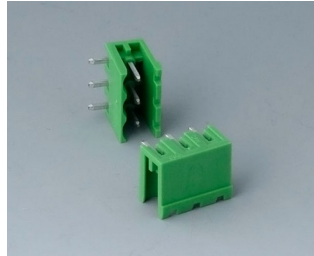
B6600334
Wall suspension elements
PPO (UL 94 V-0)
black

RAILTEC B

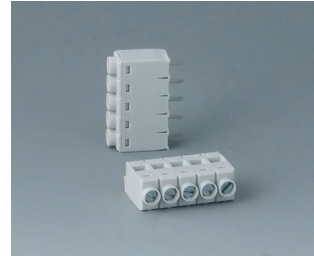
Accessory "terminals"



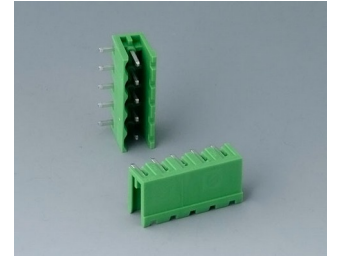
B6600111
Terminal block, block 5.0
PA 68 (UL 94 V-0)
light grey



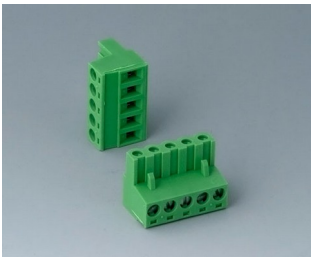
B6600222
Plug header, block 5.08
PA 68 (UL 94 V-0)



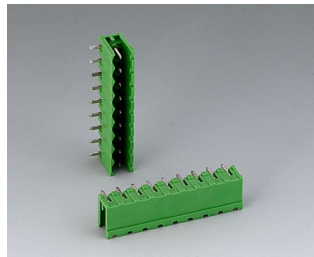
B6601111
Terminal block, block 5.0
PA 68 (UL 94 V-0)



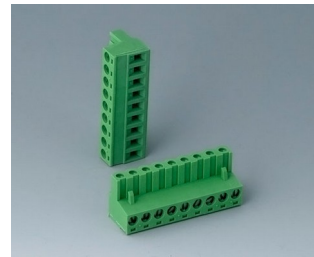
B6601222
Plug header, block 5.08
PA 6 (UL 94 V-0)



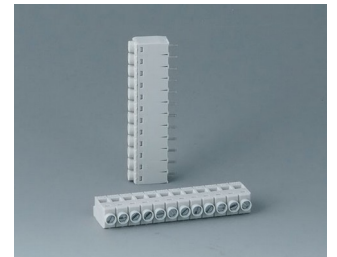
B6601223
Plug header, block 5.08
PA 6 (UL 94 V-0)



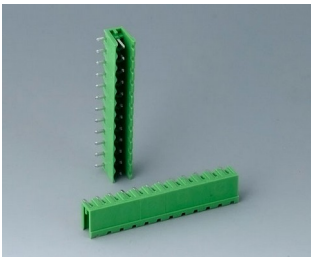
B6602222
Plug header, block 5.08
PA 6 (UL 94 V-0)



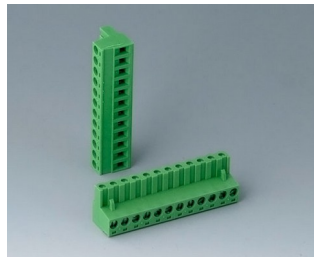
B6602223
Plug header, block 5.08
PA 6 (UL 94 V-0)



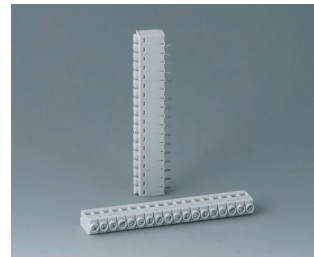
B6603111
Terminal block, block 5.0
PA 68 (UL 94 V-0)



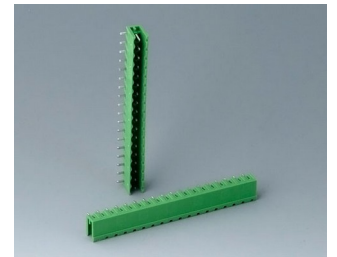
B6603222
Plug header, block 5.08
PA 6 (UL 94 V-0)



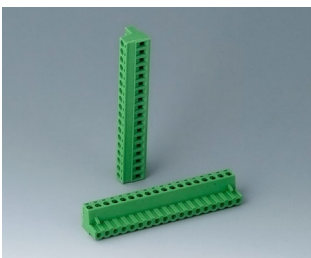
B6603223
Plug header, block 5.08
PA 6 (UL 94 V-0)



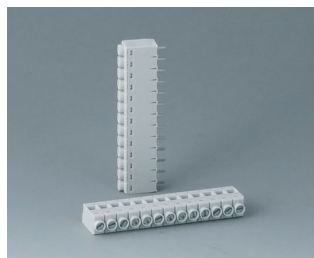
B6604111
Terminal block, block 5.0
PA 68 (UL 94 V-0)



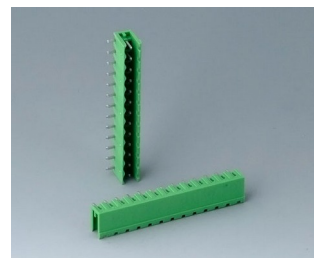
B6604222
Plug header, block 5.08
PA 68 (UL 94 V-0)



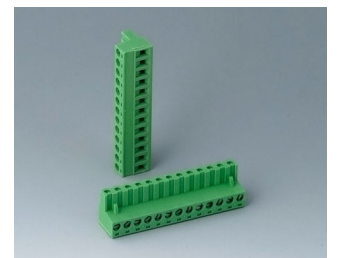
B6604223
Plug header, block 5.08
PA 68 (UL 94 V-0)



B6605111
Terminal block, block 5.0
PA 68 (UL 94 V-0)

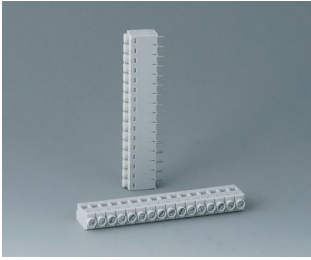


B6605222
Plug header, block 5.08
PA 6 (UL 94 V-0)

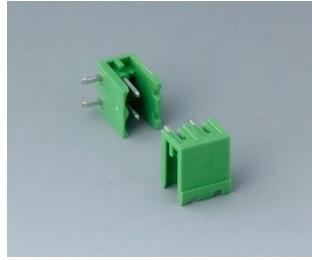


B6605223
Plug header, block 5.08
PA 6 (UL 94 V-0)

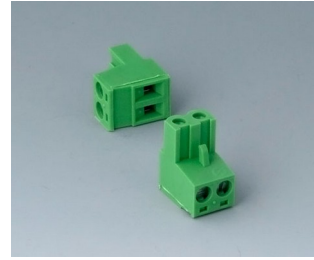
RAILTEC B



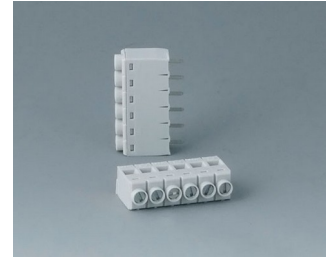
B6606111
Terminal block, block 5.0
PA 68 (UL 94 V-0)



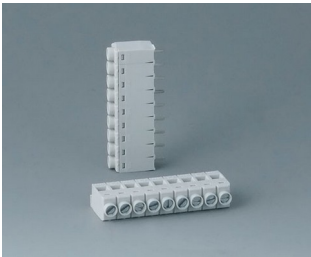
B6606222
Plug header, block 5.08
PA 6 (UL 94 V-0)



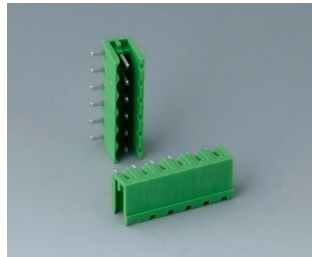
B6606223
Plug header, block 5.08
PA 6 (UL 94 V-0)



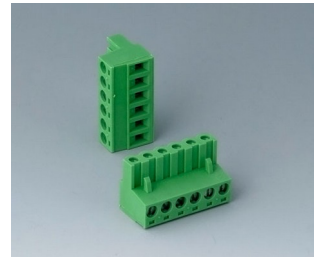
B6607111
Terminal block, block 5.0
PA 68 (UL 94 V-0)



B6608111
Terminal block, block 5.0
PA 68 (UL 94 V-0)



B6608222
Plug header, block 5.08
PA 68 (UL 94 V-0)



B6608223
Plug header, block 5.08
PA 68 (UL 94 V-0)

Accessory "terminal guards"



B6607140
Terminal guards, flat
PC (UL 94 V-0)
light grey



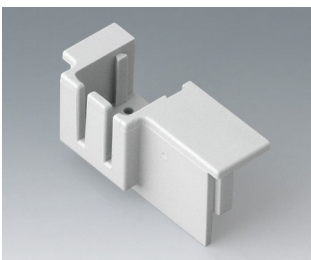
B6607141
Terminal guards, flat
PC (UL 94 V-0)
light grey



B6607142
Terminal guards, flat
PC (UL 94 V-0)
light grey



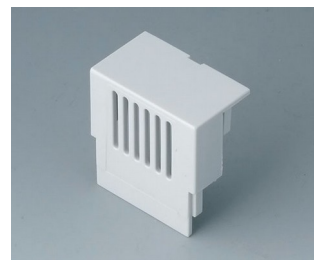
B6607143
Terminal guards, flat
PC (UL 94 V-0)
light grey



B6607145
KNX Cover, flat
PC (UL 94 V-0)
light grey



B6607160
Terminal guards, high
PC (UL 94 V-0)
light grey



B6607161
Terminal guards, high
PC (UL 94 V-0)
light grey

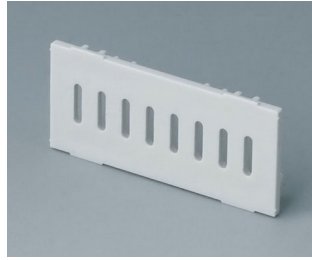


B6607162
Terminal guards, high
PC (UL 94 V-0)
light grey

RAILTEC B



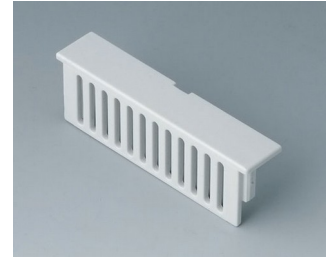
B6607163
Terminal guards, high
PC (UL 94 V-0)
light grey



B6607191
Partition plate
PC (UL 94 V-0)
light grey



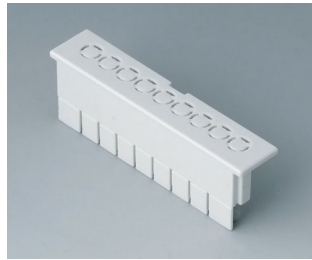
B6608140
Terminal guards, flat
PC (UL 94 V-0)
light grey



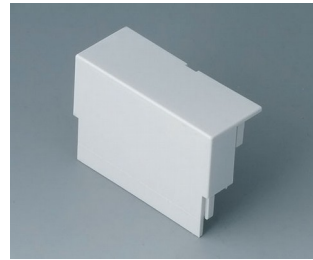
B6608141
Terminal guards, flat
PC (UL 94 V-0)
light grey



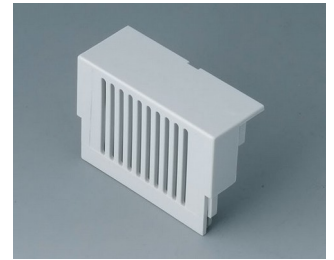
B6608142
Terminal guards, flat
PC (UL 94 V-0)
light grey



B6608143
Terminal guards, flat
PC (UL 94 V-0)
light grey



B6608160
Terminal guards, high
PC (UL 94 V-0)
light grey



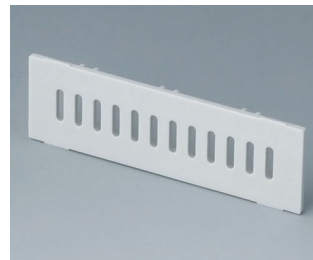
B6608161
Terminal guards, high
PC (UL 94 V-0)
light grey



B6608162
Terminal guards, high
PC (UL 94 V-0)
light grey



B6608163
Terminal guards, high
PC (UL 94 V-0)
light grey



B6608191
Partition plate
PC (UL 94 V-0)
light grey

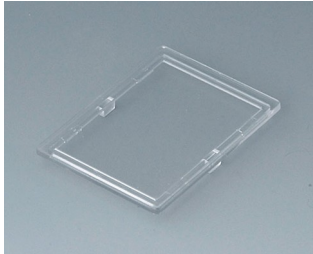
Accessory "screws"



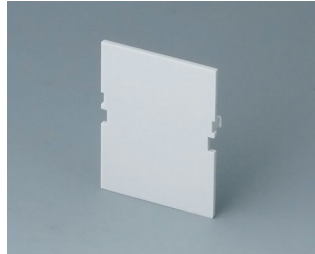
A0305031
Self-tapping screws 2.5 x 6 mm
(PZ1)

RAILTEC B

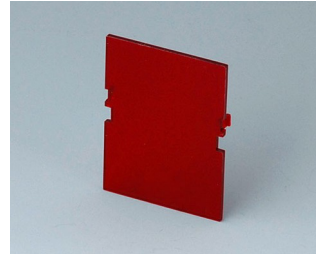
Accessory



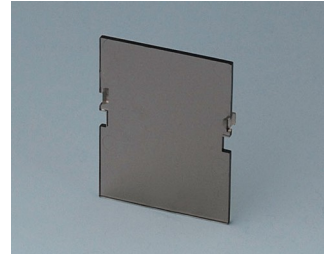
B6601100
Lid, 2 modules
PC (UL 94 V-0)
transparent



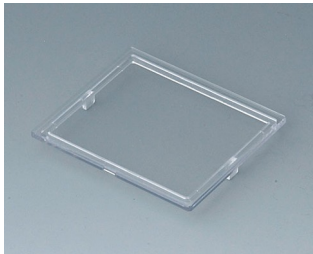
B6601180
Front panel, 2 modules, Vers. VI
PC (UL 94 V-0)
light grey
32x42mm



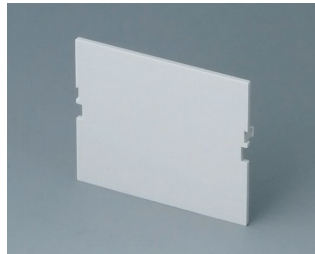
B6601480
Front panel, 2 modules, Vers. VI
PC (UL 94 V-0)
red transparent
32x42mm



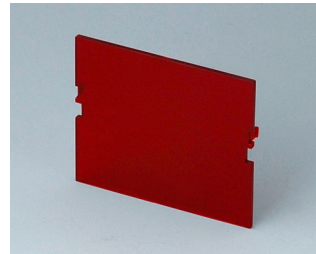
B6601580
Front panel, 2 modules, Vers. VI
PC (UL 94 V-0)
smoked glass
32x42mm



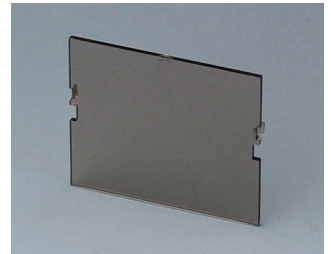
B6602100
Lid, 3 modules
PC (UL 94 V-0)
transparent



B6602180
Front panel, 3 modules, Vers. VI
PC (UL 94 V-0)
light grey
49x42mm



B6602480
Front panel, 3 modules, Vers. VI
PC (UL 94 V-0)
red transparent
49x42mm



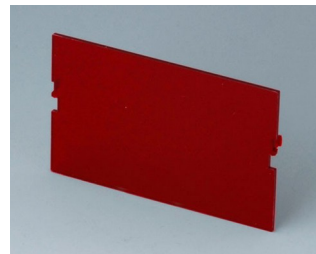
B6602580
Front panel, 3 modules, Vers. VI
PC (UL 94 V-0)
smoked glass
42x49mm



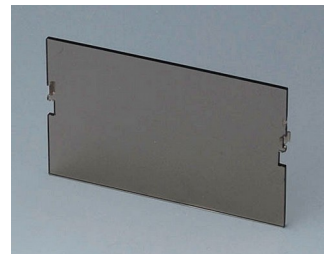
B6603100
Lid, 4 modules
PC (UL 94 V-0)
transparent



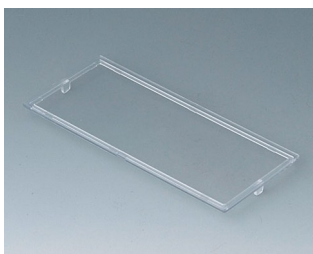
B6603180
Front panel, 4 modules, Vers. VI
PC (UL 94 V-0)
light grey
67x42mm



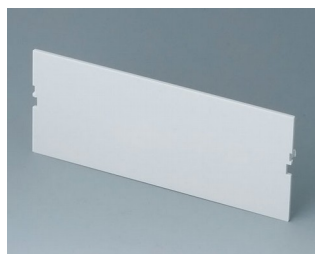
B6603480
Front panel, 4 modules, Vers. VI
PC (UL 94 V-0)
red transparent
67x42mm



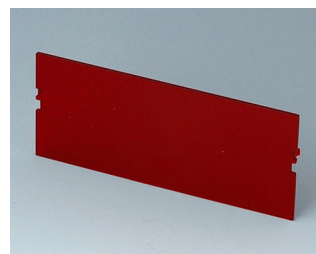
B6603580
Front panel, 4 modules, Vers. VI
PC (UL 94 V-0)
smoked glass
67x42mm



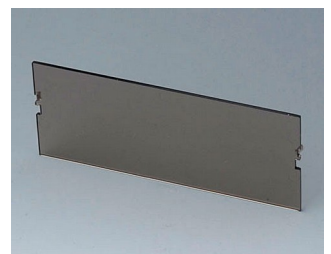
B6604100
Lid, 6 modules
PC (UL 94 V-0)
transparent



B6604180
Front panel, 6 modules, Vers. VI
PC (UL 94 V-0)
light grey
102x42mm



B6604480
Front panel, 6 modules, Vers. VI
PC (UL 94 V-0)
red transparent
102x42mm

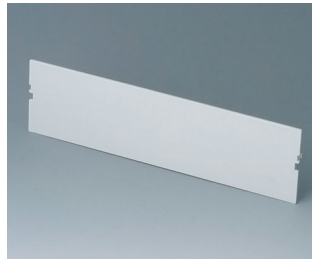


B6604580
Front panel, 6 modules, Vers. VI
PC (UL 94 V-0)
smoked glass
102x42mm

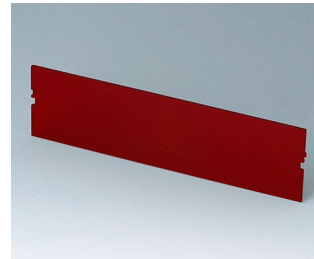
RAILTEC B



B6605100
 Lid, 9 modules
 PC (UL 94 V-0)
 transparent



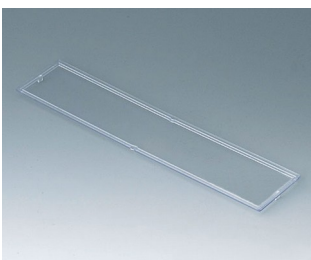
B6605180
 Front panel, 9 modules, Vers. VI
 PC (UL 94 V-0)
 light grey
 155x42mm



B6605480
 Front panel, 9 modules, Vers. VI
 PC (UL 94 V-0)
 red transparent
 155x42mm



B6605580
 Front panel, 9 modules, Vers. VI
 PC (UL 94 V-0)
 smoked glass
 155x42mm



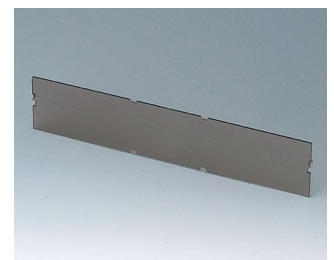
B6606100
 Lid, 12 modules
 PC (UL 94 V-0)
 transparent



B6606180
 Front panel, 12 modules, Vers. VI
 PC (UL 94 V-0)
 light grey
 206x42mm



B6606480
 Front panel, 12 modules, Vers. VI
 PC (UL 94 V-0)
 red transparent
 206x42mm



B6606580
 Front panel, 12 modules, Vers. VI
 PC (UL 94 V-0)
 smoked glass
 206x42mm

Subject to technical modification without notice. © by OKW Gehäusesysteme, Buchen/Germany.