

# EURO CASE

## Duże obudowy do urządzeń

Nasze obudowy z serii EURO CASE są wytrzymałe i bardzo łatwe w montażu. Obudowa montowana jest za pomocą bardzo wytrzymałych zatrzasków.

- obudowa do stałych lub przenośnych zastosowań
- dużo miejsca dla elementów operacyjnych i interfejsów
- dwie standardowe szerokości: 42 TE i 63 TE
- cztery wysokości: 1 HE, 2 HE, 3 HE, 6 HE; panele boczne w trzech rozmiarach (0.5 HE, 1 HE i 2 HE)
- dodatkowe płyty boczne mogą być skonfigurowane tak, aby pozwolić na większą wysokość obudowy aby można było zgrupować kilka jednostek
- formowane na etapie produkcji żeberka zwiększają sztywność i wytrzymałość konstrukcji jednocześnie nie dociążając jej
- zwiększona ergonomii podczas używanie rozkładanej podstawki, lub wytrzymały uchwyt do przenoszenia
- problemy z chłodzeniem można rozwiązać za pomocą wtykanych paneli z otworami wentylacyjnymi
- wytrzymała konstrukcja zatrzaskowa
- minimum montażu dzięki specjalnemu mechanizmowi zatrzaskowemu OKW
- aluminiowe panele przednie zamawiane oddzielnie, wystarczy wsunąć
- dostosuje EURO CASE do swojego firmowego wyglądu, na przykład dopierając kolor pod własną firmę
- klasa szczelności IP 40
- wewnętrzne słupki do montażu PCB itp.
- cztery antypoślizgowe nóżki w komplecie



# EURO CASE

## Aplikacje i przykłady

- Pomiary i sterowanie
- Urządzenia peryferyjne
- Sprzęt laboratoryjny
- Wyroby medyczne i zdrowotne



Light therapy device

## Opcje dostosowywania

Czego potrzebujesz do spersonalizowania, swojego produktu? Dostarczamy obudowy i pokręta wraz ze wszystkimi niezbędnymi wymaganymi modyfikacjami.

Opcje dostosowywania dla Euro Case



Obróbka obudów



Lakierowanie



Nadruk



Znakowanie laserowe



Specjalne materiały



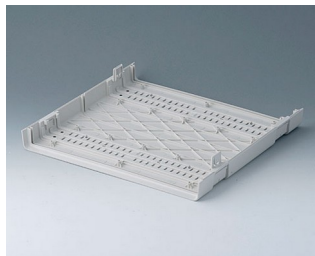
Powłoka EMC



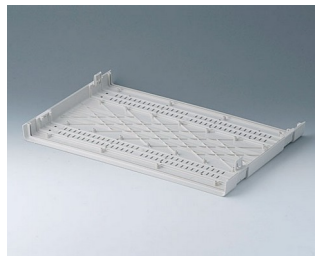
Instalacja / montaż

# EURO CASE

## Wersje



**A0114170**  
Shell 42 TE  
ABS (UL 94 HB)  
off-white RAL 9002  
260x250x27mm



**A0116170**  
Shell 63 TE  
ABS (UL 94 HB)  
off-white RAL 9002  
367x250x27mm



**A0214070**  
EURO CASE 42 TE, without  
handle  
ABS (UL 94 HB)  
off-white RAL 9002  
260x250x54mm



**A0214170**  
EURO CASE 42 TE, without  
handle  
ABS (UL 94 HB)  
off-white RAL 9002  
260x250x54mm



**A0214270**  
EURO CASE 42 TE, without  
handle  
ABS (UL 94 HB)  
off-white RAL 9002  
260x250x54mm



**A0216070**  
EURO CASE 63 TE, without  
handle  
ABS (UL 94 HB)  
off-white RAL 9002  
367x250x54mm



**A0216170**  
EURO CASE 63 TE, without  
handle  
ABS (UL 94 HB)  
off-white RAL 9002  
367x250x54mm



**A0216270**  
EURO CASE 63 TE, without  
handle  
ABS (UL 94 HB)  
off-white RAL 9002  
367x250x54mm



**A0224070**  
EURO CASE 42 TE, without  
handle  
ABS (UL 94 HB)  
off-white RAL 9002  
260x250x98,5mm



**A0224170**  
EURO CASE 42 TE, without  
handle  
ABS (UL 94 HB)  
off-white RAL 9002  
260x250x98,5mm



**A0224270**  
EURO CASE 42 TE, without  
handle  
ABS (UL 94 HB)  
off-white RAL 9002  
260x250x98,5mm



**A0224470**  
EURO CASE 42 TE, with handle  
ABS (UL 94 HB)  
off-white RAL 9002  
260x250x98,5mm

# EURO CASE



**A0224570**  
EURO CASE 42 TE, with handle  
ABS (UL 94 HB)  
off-white RAL 9002  
260x250x98,5mm



**A0224670**  
EURO CASE 42 TE, with handle  
ABS (UL 94 HB)  
off-white RAL 9002  
260x250x98,5mm



**A0226070**  
EURO CASE 63 TE, without  
handle  
ABS (UL 94 HB)  
off-white RAL 9002  
367x250x98,5mm



**A0226170**  
EURO CASE 63 TE, without  
handle  
ABS (UL 94 HB)  
off-white RAL 9002  
367x250x98,5mm



**A0226270**  
EURO CASE 63 TE, without  
handle  
ABS (UL 94 HB)  
off-white RAL 9002  
367x250x98,5mm



**A0226470**  
EURO CASE 63 TE, with handle  
ABS (UL 94 HB)  
off-white RAL 9002  
367x250x98,5mm



**A0226570**  
EURO CASE 63 TE, with handle  
ABS (UL 94 HB)  
off-white RAL 9002  
367x250x98,5mm



**A0226670**  
EURO CASE 63 TE, with handle  
ABS (UL 94 HB)  
off-white RAL 9002  
367x250x98,5mm



**A0234070**  
EURO CASE 42 TE, without  
handle  
ABS (UL 94 HB)  
off-white RAL 9002  
260x250x143mm



**A0234170**  
EURO CASE 42 TE, without  
handle  
ABS (UL 94 HB)  
off-white RAL 9002  
260x250x143mm



**A0234270**  
EURO CASE 42 TE, without  
handle  
ABS (UL 94 HB)  
off-white RAL 9002  
260x250x143mm



**A0234470**  
EURO CASE 42 TE, with handle  
ABS (UL 94 HB)  
off-white RAL 9002  
260x250x143mm



**A0234570**  
EURO CASE 42 TE, with handle  
ABS (UL 94 HB)  
off-white RAL 9002  
260x250x143mm



**A0234670**  
EURO CASE 42 TE, with handle  
ABS (UL 94 HB)  
off-white RAL 9002  
260x250x143mm



**A0236070**  
EURO CASE 63 TE, without  
handle  
ABS (UL 94 HB)  
off-white RAL 9002  
367x250x143mm



**A0236170**  
EURO CASE 63 TE, without  
handle  
ABS (UL 94 HB)  
off-white RAL 9002  
367x250x143mm



# EURO CASE



**A0236270**  
EURO CASE 63 TE, without handle  
ABS (UL 94 HB)  
off-white RAL 9002  
367x250x143mm



**A0236470**  
EURO CASE 63 TE, with handle  
ABS (UL 94 HB)  
off-white RAL 9002  
367x250x143mm



**A0236570**  
EURO CASE 63 TE, with handle  
ABS (UL 94 HB)  
off-white RAL 9002  
367x250x143mm



**A0236670**  
EURO CASE 63 TE, with handle  
ABS (UL 94 HB)  
off-white RAL 9002  
367x250x143mm



**A0266070**  
EURO CASE 63 TE, without handle  
ABS (UL 94 HB)  
off-white RAL 9002  
367x250x276,5mm

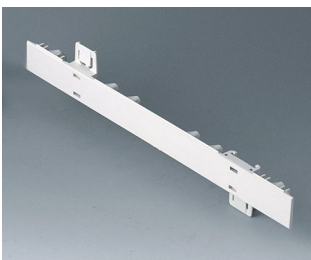


**A0266170**  
EURO CASE 63 TE, without handle  
ABS (UL 94 HB)  
off-white RAL 9002  
367x250x276,5mm

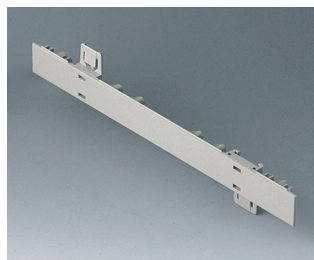


**A0266270**  
EURO CASE 63 TE, without handle  
ABS (UL 94 HB)  
off-white RAL 9002  
367x250x276,5mm

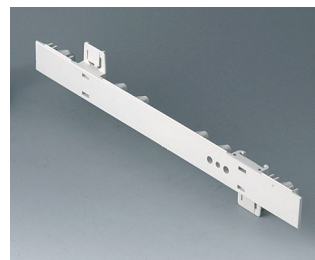
## System components to complete



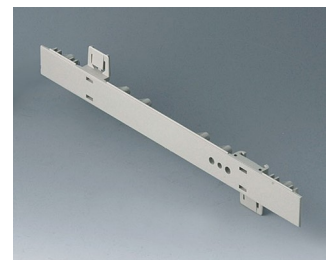
**A0105270**  
Side panel 0.5 HE  
ABS (UL 94 HB)  
off-white RAL 9002  
250x22,25mm



**A0105280**  
Side panel 0.5 HE  
ABS (UL 94 HB)  
pebble grey RAL 7032  
250x22,25mm

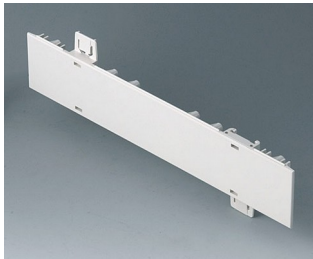


**A0106270**  
Side panel 0.5 HE, for handle mounting  
ABS (UL 94 HB)  
off-white RAL 9002  
250x22,25mm

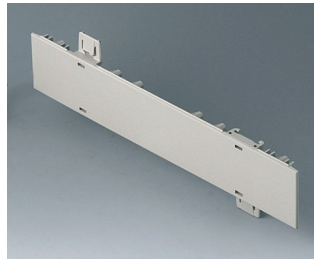


**A0106280**  
Side panel 0.5 HE, for handle mounting  
ABS (UL 94 HB)  
pebble grey RAL 7032  
250x22,25mm

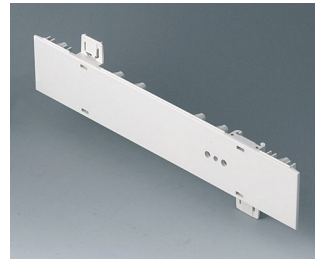
# EURO CASE



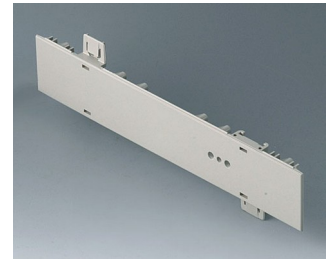
**A0110270**  
Side panel 1 HE  
ABS (UL 94 HB)  
off-white RAL 9002  
250x44,45mm



**A0110280**  
Side panel 1 HE  
ABS (UL 94 HB)  
pebble grey RAL 7032  
250x44,45mm



**A0111270**  
Side panel 1 HE, for handle  
mounting  
ABS (UL 94 HB)  
off-white RAL 9002  
250x44,45mm



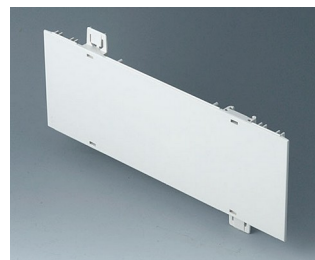
**A0111280**  
Side panel 1 HE, for handle  
mounting  
ABS (UL 94 HB)  
pebble grey RAL 7032  
250x44,45mm



**A0114370**  
Snap-in panel, without slots  
ABS (UL 94 HB)  
off-white RAL 9002



**A0116370**  
Snap-in panel, without slots  
ABS (UL 94 HB)  
off-white RAL 9002



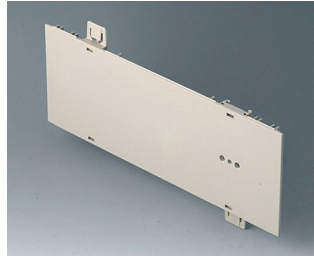
**A0120270**  
Side panel 2 HE  
ABS (UL 94 HB)  
off-white RAL 9002  
250x88,9mm



**A0120280**  
Side panel 2 HE  
ABS (UL 94 HB)  
pebble grey RAL 7032  
250x88,9mm



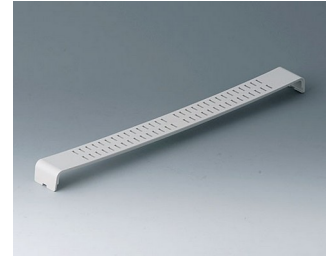
**A0121270**  
Side panel 2 HE, for handle  
mounting  
ABS (UL 94 HB)  
off-white RAL 9002  
250x88,9mm



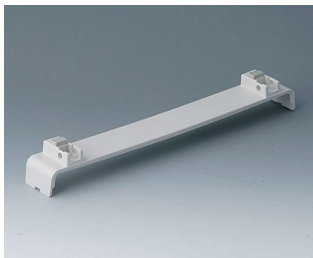
**A0121280**  
Side panel 2 HE, for handle  
mounting  
ABS (UL 94 HB)  
pebble grey RAL 7032  
250x88,9mm



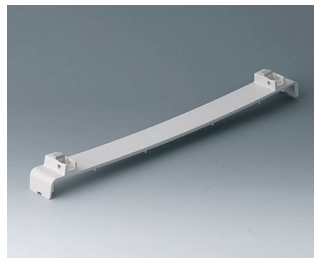
**A0124370**  
Snap-in panel, with slots  
ABS (UL 94 HB)  
off-white RAL 9002



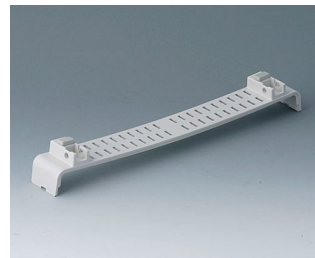
**A0126370**  
Snap-in panel, with slots  
ABS (UL 94 HB)  
off-white RAL 9002



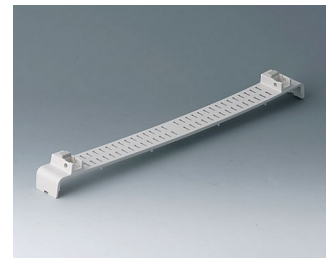
**A0134370**  
Snap-in panel, without slots, with  
feet  
ABS (UL 94 HB)  
off-white RAL 9002



**A0136370**  
Snap-in panel, without slots, with  
feet  
ABS (UL 94 HB)  
off-white RAL 9002



**A0144370**  
Snap-in panel with, slots, with  
feet  
ABS (UL 94 HB)  
off-white RAL 9002



**A0146370**  
Snap-in panel, with slots, with  
feet  
ABS (UL 94 HB)  
off-white RAL 9002

# EURO CASE



**A0344216**  
Handle 42 TE  
PA 6  
off-white RAL 9002



**A0344217**  
Handle 42 TE  
PA 6  
off-white RAL 9002



**A0344218**  
Handle 42 TE  
PA 6  
pebble grey RAL 7032



**A0346316**  
Handle 63 TE  
PA 6  
off-white RAL 9002



**A0346317**  
Handle 63 TE  
PA 6  
off-white RAL 9002



**A0346318**  
Handle 63 TE  
PA 6  
pebble grey RAL 7032

## Accessory to complete



**A0314270**  
Front / rear panel 42 TE 1 HE  
Aluminium  
matt anodised  
250,8x46,3x2mm



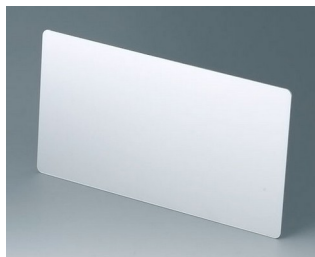
**A0316370**  
Front / rear panel 63 TE 1 HE  
Aluminium  
matt anodised  
357,8x46,3x2mm



**A0324270**  
Front / rear panel 42 TE 2 HE  
Aluminium  
matt anodised  
250,8x90,7x2mm



**A0326370**  
Front / rear panel 63 TE 2 HE  
Aluminium  
matt anodised  
357,8x90,7x2mm



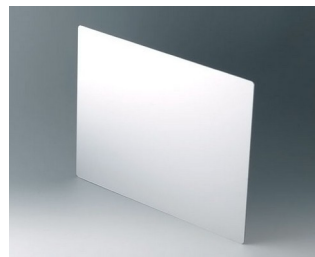
**A0334270**  
Front / rear panel 42 TE 3 HE  
Aluminium  
matt anodised  
250,8x135,2x2mm



**A0336370**  
Front / rear panel 63 TE 3 HE  
Aluminium  
matt anodised  
357,8x135,2x2mm



**A0354270**  
Front / rear panel 42 TE 1.5 HE  
Aluminium  
matt anodised  
250,8x68,5x2mm



**A0366370**  
Front / rear panel 63 TE 6 HE  
Aluminium  
matt anodised  
268,6x357,8x2mm

# EURO CASE

## Accessory "screws"



**A0306031**  
Self-tapping screws 3 x 6 mm  
(PZ1)



**A0308031**  
Self-tapping screws 3 x 8 mm  
(PZ1)



**A0308132**  
Self-tapping screw 3 x 8 mm  
(T10)  
Stainless steel

## Accessory



**A0350007**  
Tilt foot  
ABS (UL 94 HB)  
off-white RAL 9002

Subject to technical modification without notice. © by OKW Gehäusesysteme, Buchen/Germany.