

RAILTEC C

Módulos para trilho DIN com vedações e suportes PCB

Vasta gama de caixas para aplicação em trilho DIN, para montagem no padrão de trilhos DIN EN 60715 ou para montagem em painel. Além disso, o PCB aberto de trilho DIN suporta montagem de componente individual e substituição simples das interfaces.

- todos os tipos projetados para instalação rápida em PCB e terminais
- excelentes propriedades de materiais para difíceis condições e com estabilidade em altas temperaturas (UL 94 V-0)
- montagem rápida e fácil com instalação snap-in das partes da caixa
- **RAILTEC C:** para blocos de terminais PCB, pinos para plugar e conectores frontais; quadro opcional para posição PCB adicional; painéis frontais e tampas em diferentes versões; 1 a 12 larguras de módulo; para trilhos DIN EN 60715 TH35; posicionamento PCB em todos as 3 direções; adaptador para TH15 e trilhos G32 (1 a 4 modelos de módulo) como acessório

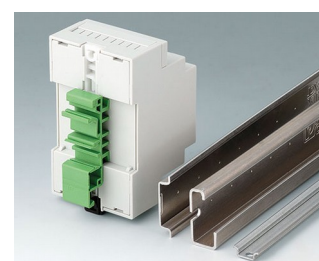
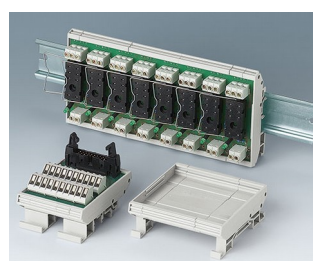
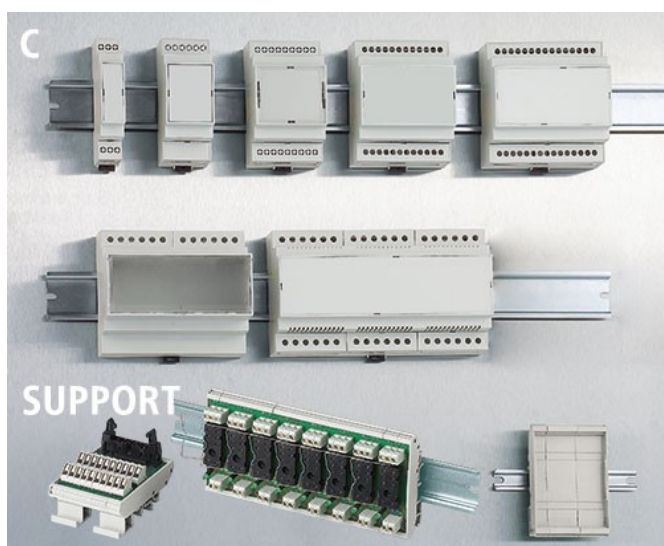
Versão I frente aberta, conexão lateral com acesso através da passagem, sem ranhuras de ventilação

Versão II frente aberta, conexão lateral com acesso através da passagem, com aberturas de ventilação

Versão III lado aberto, conexão frontal com a parede estendida, sem ranhuras de ventilação

Versão IV frente fechada, conexão lateral com acesso através da passagem, sem ranhuras de ventilação

- **RAILTEC SUPPORT:** suporte de PCB para montagem em trilho DIN; projeto modular para a montagem de componentes individuais; para trilho DIN EN 60715 TH35, TH15 e G32
- classe de proteção < IP 40



RAILTEC C

Modificações específicas do cliente

O que você ainda precisa em seu próprio produto pessoal? Nós podemos fornecer caixas e knobs de ajuste com todas as modificações necessárias para a montagem de seus componentes eletrônicos. Opções para customizadas Railtec C



Usinagem



Pintura



Impressão



Letragem a laser



Películas decorativas



Instalação / Montagem
de acessórios

Versões



B6700100
RAILTEC C, 1 module, Vers. I
PC (UL 94 V-0)
light grey
17,5x90x58mm



B6700102
RAILTEC C, 1 module, Vers. II
PC (UL 94 V-0)
light grey
17,5x90x58mm



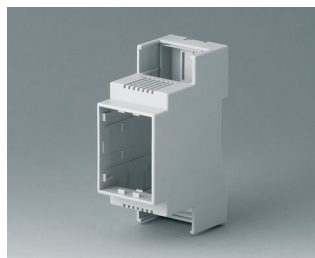
B6700104
RAILTEC C, 1 module, Vers. III
PC (UL 94 V-0)
light grey
17,5x90x58mm



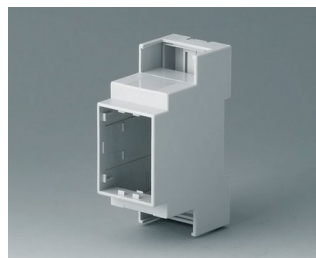
B6700106
RAILTEC C, 1 module, Vers. IV
PC (UL 94 V-0)
light grey
17,5x90x58mm



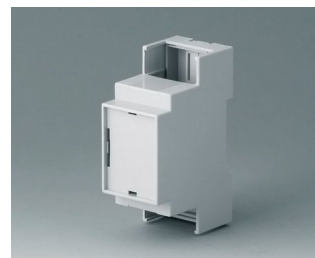
B6701100
RAILTEC C, 2 modules, Vers. I
PC (UL 94 V-0)
light grey
36x90x58mm



B6701102
RAILTEC C, 2 modules, Vers. II
PC (UL 94 V-0)
light grey
36x90x58mm

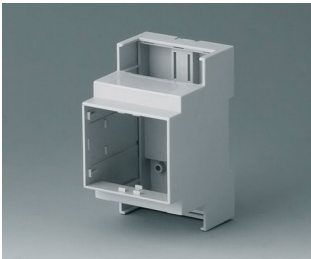


B6701104
RAILTEC C, 2 modules, Vers. III
PC (UL 94 V-0)
light grey
36x90x58mm

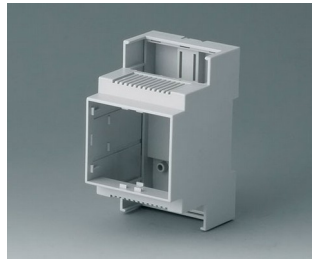


B6701106
RAILTEC C, 2 modules, Vers. IV
PC (UL 94 V-0)
light grey
36x90x58mm

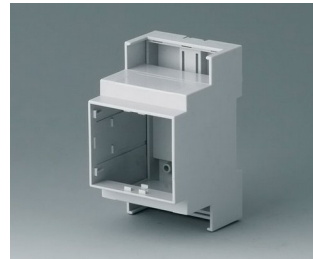
RAILTEC C



B6702100
RAILTEC C, 3 modules, Vers. I
PC (UL 94 V-0)
light grey
53x90x58mm



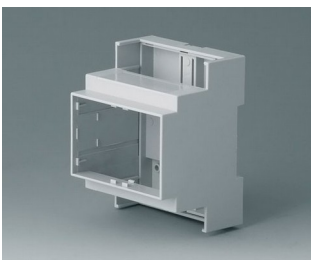
B6702102
RAILTEC C, 3 modules, Vers. II
PC (UL 94 V-0)
light grey
53x90x58mm



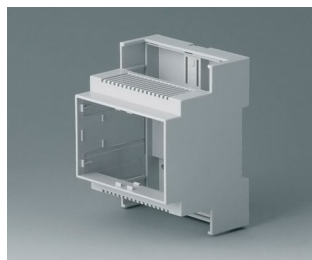
B6702104
RAILTEC C, 3 modules, Vers. III
PC (UL 94 V-0)
light grey
53x90x58mm



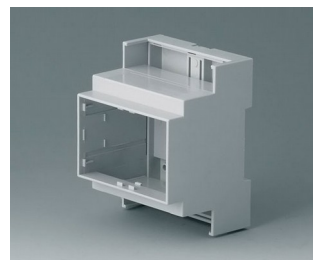
B6702106
RAILTEC C, 3 modules, Vers. IV
PC (UL 94 V-0)
light grey
53x90x58mm



B6703100
RAILTEC C, 4 modules, Vers. I
PC (UL 94 V-0)
light grey
71x90x58mm



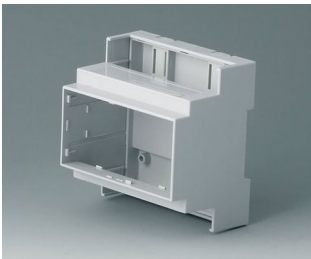
B6703102
RAILTEC C, 4 modules, Vers. II
PC (UL 94 V-0)
light grey
71x90x58mm



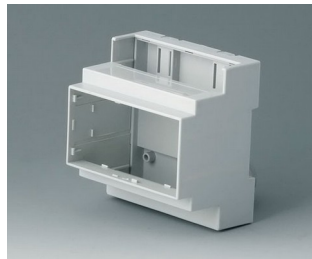
B6703104
RAILTEC C, 4 modules, Vers. III
PC (UL 94 V-0)
light grey
71x90x58mm



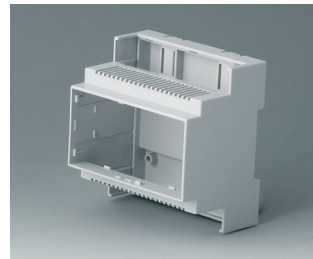
B6703106
RAILTEC C, 4 modules, Vers. IV
PC (UL 94 V-0)
light grey
71x90x58mm



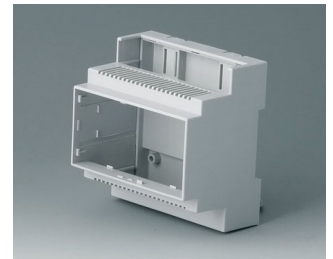
B6704100
RAILTEC C, 5 modules, Vers. I
PC (UL 94 V-0)
light grey
88x90x58mm



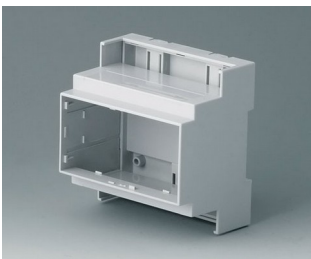
B6704101
RAILTEC C, 5 modules, Vers. I
PC (UL 94 V-0)
light grey
88x90x58mm



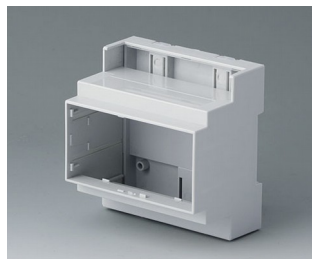
B6704102
RAILTEC C, 5 modules, Vers. II
PC (UL 94 V-0)
light grey
88x90x58mm



B6704103
RAILTEC C, 5 modules, Vers. II
PC (UL 94 V-0)
light grey
88x90x58mm



B6704104
RAILTEC C, 5 modules, Vers. III
PC (UL 94 V-0)
light grey
88x90x58mm



B6704105
RAILTEC C, 5 modules, Vers. III
PC (UL 94 V-0)
light grey
88x90x58mm

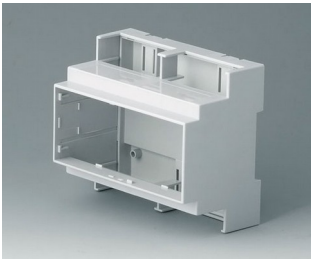


B6704106
RAILTEC C, 5 modules, Vers. IV
PC (UL 94 V-0)
light grey
88x90x58mm

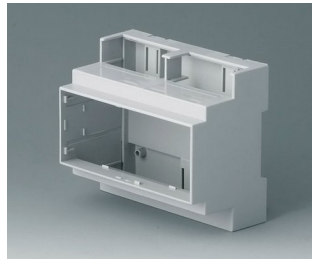


B6704107
RAILTEC C, 5 modules, Vers. IV
PC (UL 94 V-0)
light grey
88x90x58mm

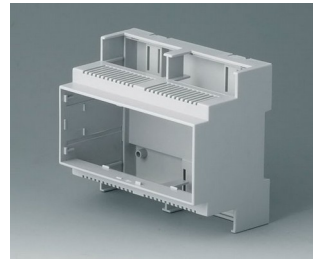
RAILTEC C



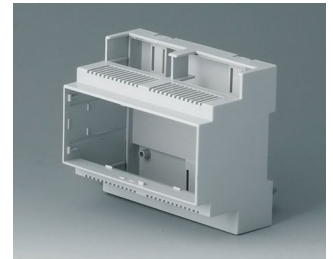
B6705100
RAILTEC C, 6 modules, Vers. I
PC (UL 94 V-0)
light grey
106x90x58mm



B6705101
RAILTEC C, 6 modules, Vers. I
PC (UL 94 V-0)
light grey
106x90x58mm



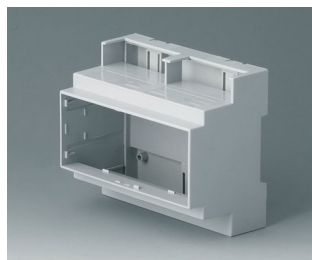
B6705102
RAILTEC C, 6 modules, Vers. II
PC (UL 94 V-0)
light grey
106x90x58mm



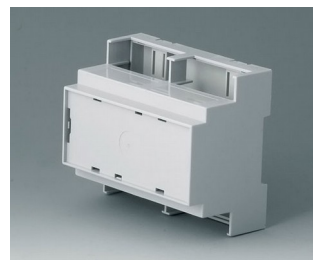
B6705103
RAILTEC C, 6 modules, Vers. II
PC (UL 94 V-0)
light grey
106x90x58mm



B6705104
RAILTEC C, 6 modules, Vers. III
PC (UL 94 V-0)
light grey
106x90x58mm



B6705105
RAILTEC C, 6 modules, Vers. III
PC (UL 94 V-0)
light grey
106x90x58mm



B6705106
RAILTEC C, 6 modules, Vers. IV
PC (UL 94 V-0)
light grey
106x90x58mm



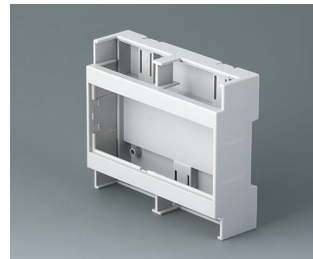
B6705107
RAILTEC C, 6 modules, Vers. IV
PC (UL 94 V-0)
light grey
106x90x58mm



B6705700
RAILTEC C, 6 modules, high
PC (UL 94 V-0)
light grey
107x90x114mm



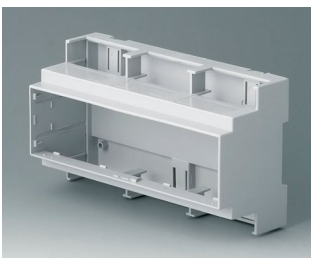
B6705706
RAILTEC C, 6 modules, high
PC (UL 94 V-0)
light grey
107x90x114mm



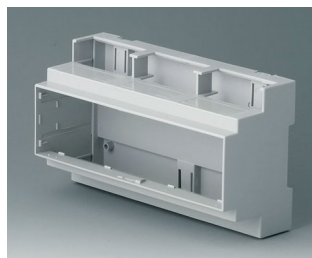
B6705800
RAILTEC C, 6 modules, flat,
Vers. I
PC (UL 94 V-0)
light grey
106,2x90x32mm



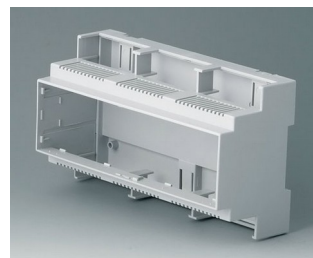
B6705806
RAILTEC C, 6 modules, flat,
Vers. IV
PC (UL 94 V-0)
light grey
106,2x90x32mm



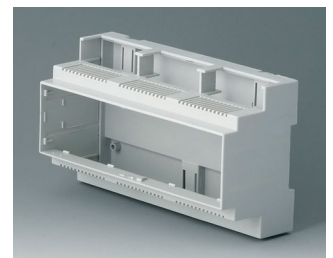
B6706100
RAILTEC C, 9 modules, Vers. I
PC (UL 94 V-0)
light grey
160x90x58mm



B6706101
RAILTEC C, 9 modules, Vers. I
PC (UL 94 V-0)
light grey
160x90x58mm

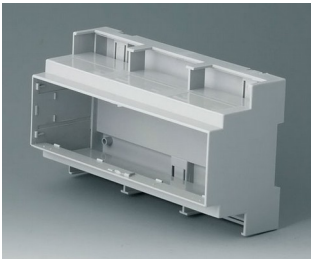


B6706102
RAILTEC C, 9 modules, Vers. II
PC (UL 94 V-0)
light grey
160x90x58mm

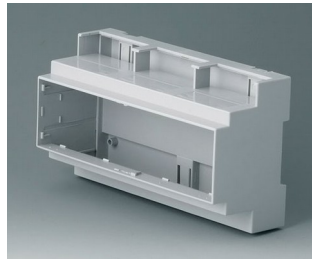


B6706103
RAILTEC C, 9 modules, Vers. II
PC (UL 94 V-0)
light grey
160x90x58mm

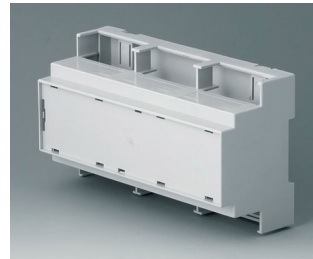
RAILTEC C



B6706104
RAILTEC C, 9 modules, Vers. III
PC (UL 94 V-0)
light grey
160x90x58mm



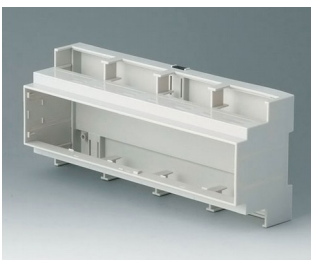
B6706105
RAILTEC C, 9 modules, Vers. III
PC (UL 94 V-0)
light grey
160x90x58mm



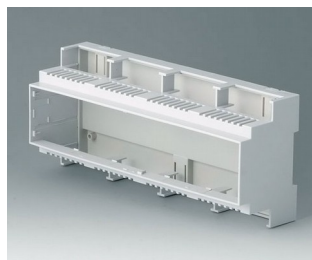
B6706106
RAILTEC C, 9 modules, Vers. IV
PC (UL 94 V-0)
light grey
160x90x58mm



B6706107
RAILTEC C, 9 modules, Vers. IV
PC (UL 94 V-0)
light grey
160x90x58mm



B6707100
RAILTEC C, 12 modules, Vers. I
PC (UL 94 V-0)
light grey
210x90x58mm



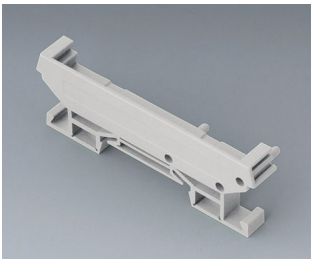
B6707102
RAILTEC C, 12 modules, Vers. II
PC (UL 94 V-0)
light grey
210x90x58mm



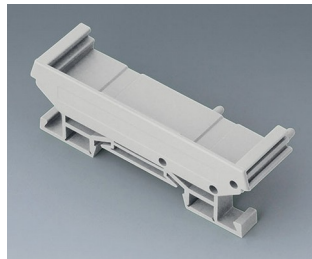
B6724333
RAILTEC SUP. 72, end section
PA 6 (30) (UL 94 V-0)
light grey
82x11,2x16mm



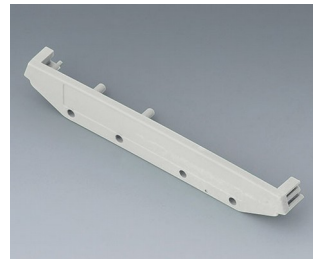
B6724334
RAILTEC SUP. 72, end section
PA 6 (30) (UL 94 V-0)
light grey
82x22,2x16mm



B6724335
RAILTEC SUP. 72, end section
with foot
PA 6 (30) (UL 94 V-0)
light grey
82x11,2x22,5mm



B6724336
RAILTEC SUP. 72, end section
with foot
PA 6 (30) (UL 94 V-0)
light grey
82x22,2x22,5mm

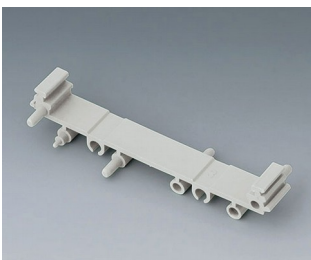


B6724444
RAILTEC SUP. 107, end section
PA 6 (30) (UL 94 V-0)
light grey
118x11,5x17,5mm

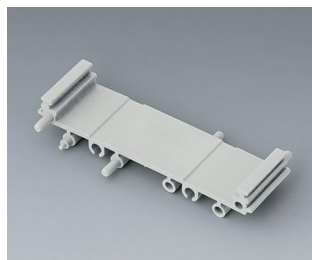


B6724445
RAILTEC SUP. 107, end section
with foot
PA 6 (30) (UL 94 V-0)
light grey
118x11,5x27,5mm

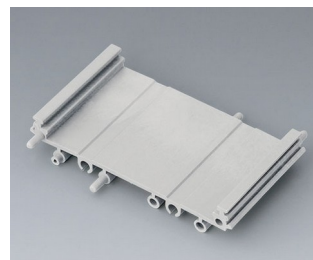
System components to complete



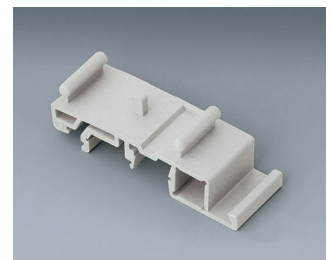
B6724330
RAILTEC SUP. 72, intermediate
part
PA 6 (30) (UL 94 V-0)
light grey
82x11,25x16mm



B6724331
RAILTEC SUP. 72, intermediate
part
PA 6 (30) (UL 94 V-0)
light grey
82x22,5x16mm

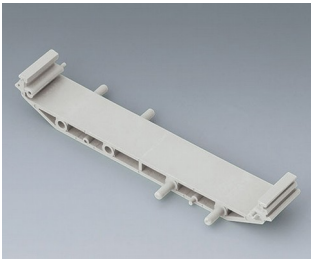


B6724332
RAILTEC SUP. 72, intermediate
part
PA 6 (30) (UL 94 V-0)
light grey
82x45x16mm

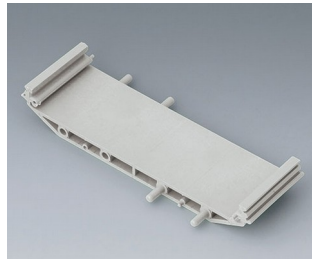


B6724337
RAILTEC SUP. 72, foot
PA 6 (30) (UL 94 V-0)
light grey

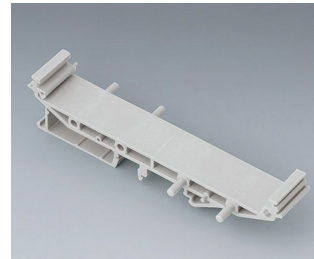
RAILTEC C



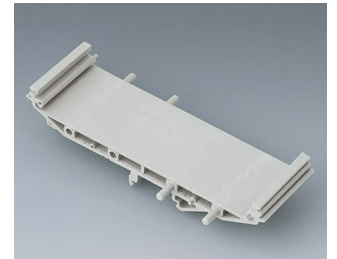
B6724440
RAILTEC SUP. 107, intermediate part
PA 6 (30) (UL 94 V-0)
light grey
118x18,5x17,5mm



B6724441
RAILTEC SUP. 107, intermediate part
PA 6 (30) (UL 94 V-0)
light grey
118x35x17,5mm

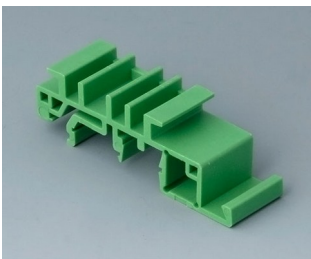


B6724442
RAILTEC SUP. 107, intermediate p. + foot
PA 6 (30) (UL 94 V-0)
light grey
118x18,5x27,5mm



B6724443
RAILTEC SUP. 107, intermediate p. + foot
PA 6 (30) (UL 94 V-0)
light grey
118x35x27,5mm

Accessory "wall/holder"



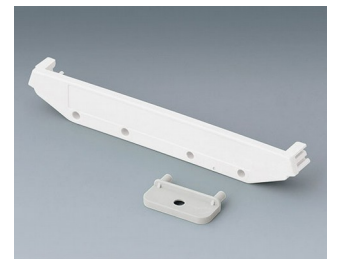
B6811542
Adapter
PA 6 (UL 94 V-0)
green



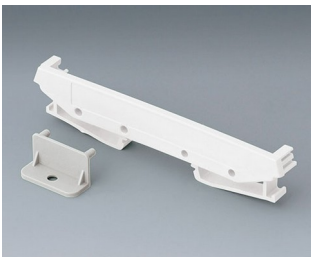
B6824532
Wall suspension element for SUP. 72
PA 6 (30) (UL 94 V-0)
light grey



B6824533
Wall suspension element with foot, SUP.
PA 6 (30) (UL 94 V-0)
light grey

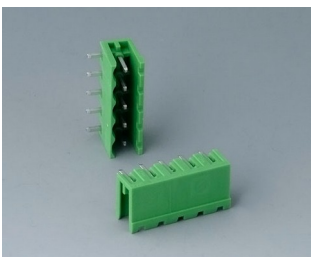


B6824542
Wall suspension element for SUP. 107
PA 6 (30) (UL 94 V-0)
light grey

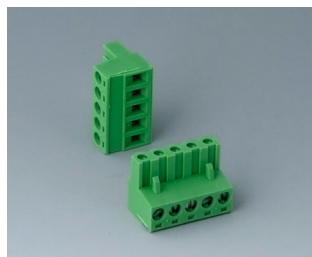


B6824543
Wall suspension element with foot, SUP.
PA 6 (30) (UL 94 V-0)
light grey

Accessory "terminals"



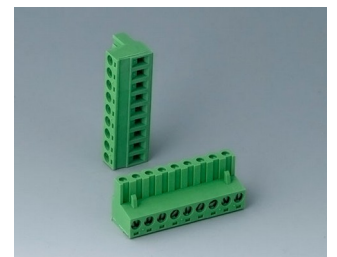
B6601222
Plug header, block 5.08
PA 6 (UL 94 V-0)



B6601223
Plug header, block 5.08
PA 6 (UL 94 V-0)

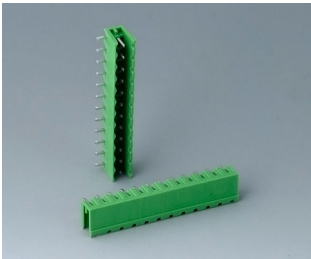


B6602222
Plug header, block 5.08
PA 6 (UL 94 V-0)

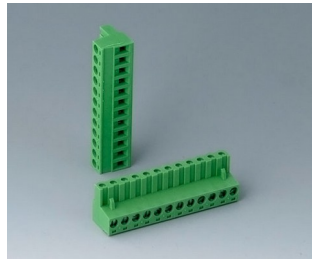


B6602223
Plug header, block 5.08
PA 6 (UL 94 V-0)

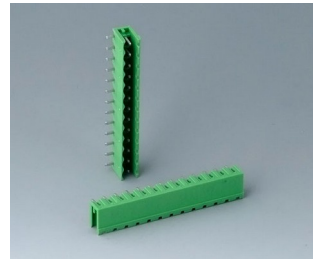
RAILTEC C



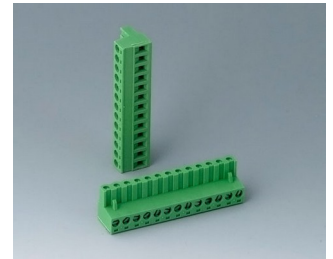
B6603222
 Plug header, block 5.08
 PA 6 (UL 94 V-0)



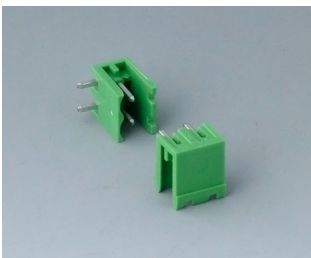
B6603223
 Plug header, block 5.08
 PA 6 (UL 94 V-0)



B6605222
 Plug header, block 5.08
 PA 6 (UL 94 V-0)



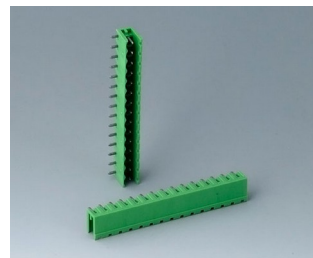
B6605223
 Plug header, block 5.08
 PA 6 (UL 94 V-0)



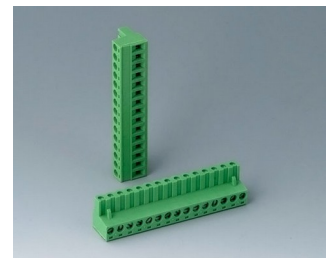
B6606222
 Plug header, block 5.08
 PA 6 (UL 94 V-0)



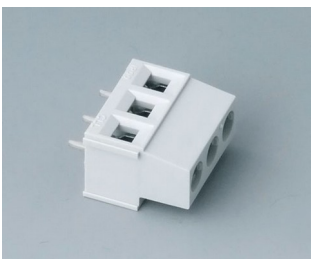
B6606223
 Plug header, block 5.08
 PA 6 (UL 94 V-0)



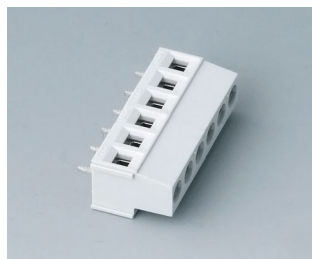
B6607222
 Plug header, block 5.08
 PA 6 (UL 94 V-0)



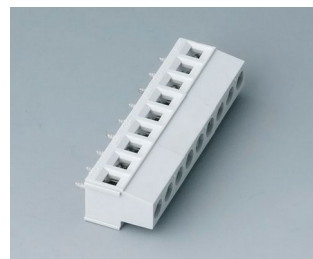
B6607223
 Plug header, block 5.08
 PA 6 (UL 94 V-0)



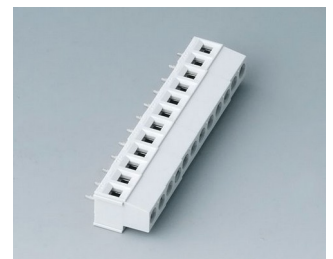
B6800650
 Terminal block, block 5.08
 PA 68 (UL 94 V-0)
 light grey



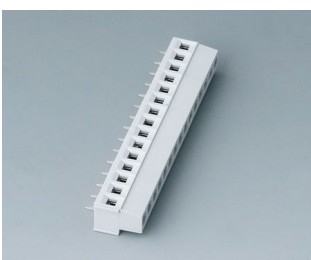
B6801650
 Terminal block, block 5.08
 PA 68 (UL 94 V-0)
 light grey



B6802650
 Terminal block, block 5.08
 PA 68 (UL 94 V-0)
 light grey



B6803650
 Terminal block, block 5.08
 PA 68 (UL 94 V-0)
 light grey



B6804650
 Terminal block, block 5.08
 PA 68 (UL 94 V-0)
 light grey

RAILTEC C

Accessory "terminal guards"



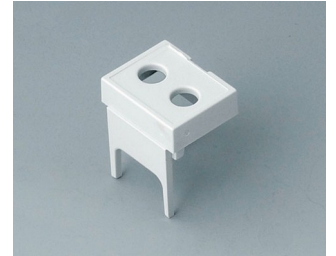
B6800111
Terminal guards, closed
PC (UL 94 V-0)
light grey



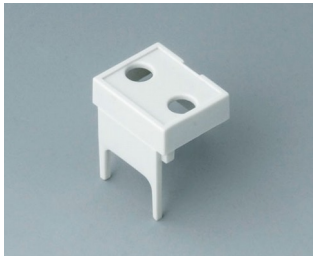
B6800112
Terminal guards, perforated,
5.08
PC (UL 94 V-0)
light grey



B6800113
Terminal guards, with holes, 5.08
PC (UL 94 V-0)
light grey



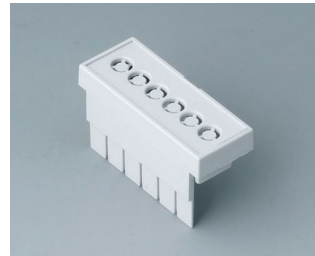
B6800114
Terminal guards, with holes, 7.5
& 7.62
PC (UL 94 V-0)
light grey



B6800115
Terminal guards, with holes,
10.16
PC (UL 94 V-0)
light grey



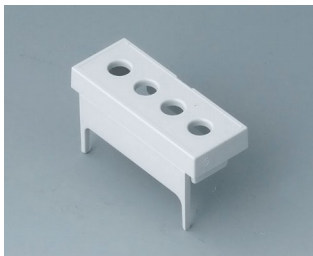
B6801111
Terminal guards, closed
PC (UL 94 V-0)
light grey



B6801112
Terminal guards, perforated,
5.08
PC (UL 94 V-0)
light grey



B6801113
Terminal guards, with holes, 5.08
PC (UL 94 V-0)
light grey



B6801114
Terminal guards, with holes, 7.5
& 7.62
PC (UL 94 V-0)
light grey



B6801115
Terminal guards, with holes,
10.16
PC (UL 94 V-0)
light grey



B6802111
Terminal guards, closed
PC (UL 94 V-0)
light grey



B6802112
Terminal guards, perforated,
5.08
PC (UL 94 V-0)
light grey



B6802113
Terminal guards, with holes, 5.08
PC (UL 94 V-0)
light grey



B6802114
Terminal guards, with holes, 7.5
& 7.62
PC (UL 94 V-0)
light grey

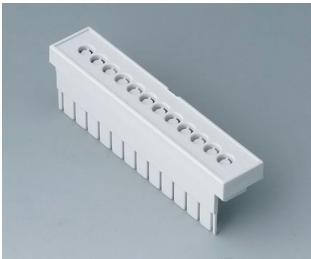


B6802115
Terminal guards, with holes,
10.16
PC (UL 94 V-0)
light grey



B6803111
Terminal guards, closed
PC (UL 94 V-0)
light grey

RAILTEC C



B6803112
Terminal guards, perforated,
5.08
PC (UL 94 V-0)
light grey



B6803113
Terminal guards, with holes, 5.08
PC (UL 94 V-0)
light grey



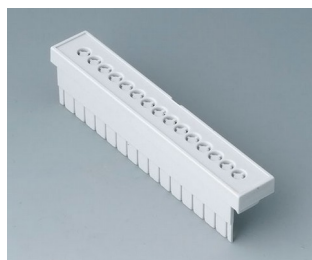
B6803114
Terminal guards, with holes, 7.5
& 7.62
PC (UL 94 V-0)
light grey



B6803115
Terminal guards, with holes,
10.16
PC (UL 94 V-0)
light grey



B6804111
Terminal guards, closed
PC (UL 94 V-0)
light grey



B6804112
Terminal guards, perforated,
5.08
PC (UL 94 V-0)
light grey



B6804113
Terminal guards, with holes, 5.08
PC (UL 94 V-0)
light grey



B6804114
Terminal guards, with holes, 7.5
& 7.62
PC (UL 94 V-0)
light grey



B6804115
Terminal guards, with holes,
10.16
PC (UL 94 V-0)
light grey

Accessory



B6800100
Front panel, 1 module
PC (UL 94 V-0)
light grey
14x42mm



B6800200
Front panel, 1 module
PC (UL 94 V-0)
transparent
14x42mm



B6801100
Front panel, 2 modules
PC (UL 94 V-0)
light grey
32x42mm



B6801200
Front panel, 2 modules
PC (UL 94 V-0)
transparent
32x42mm

RAILTEC C



B6802100
Front panel, 3 modules
PC (UL 94 V-0)
light grey
49x42mm



B6802200
Front panel, 3 modules
PC (UL 94 V-0)
transparent
49x42mm



B6803100
Front panel, 4 modules
PC (UL 94 V-0)
light grey
67x42mm



B6803200
Front panel, 4 modules
PC (UL 94 V-0)
transparent
67x42mm



B6804100
Front panel, 5 modules
PC (UL 94 V-0)
light grey
84x42mm



B6804200
Front panel, 5 modules
PC (UL 94 V-0)
transparent
84x42mm



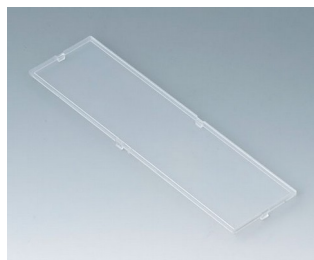
B6805100
Front panel, 6 modules
PC (UL 94 V-0)
light grey
102x42mm



B6805200
Front panel, 6 modules
PC (UL 94 V-0)
transparent
102x42mm



B6806100
Front panel, 9 modules
PC (UL 94 V-0)
light grey
155x42mm



B6806200
Front panel, 9 modules
PC (UL 94 V-0)
transparent
155x42mm



B6807100
Front panel, 12 modules
PC (UL 94 V-0)
light grey
207,5x42mm

Sujeito à modificações técnicas sem aviso prévio. © de OKW Gehäusesysteme, Buchen/Alemanha.