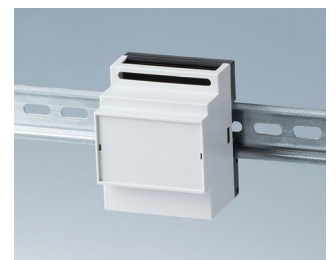
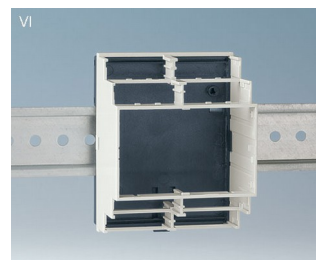
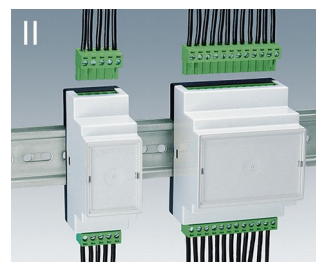
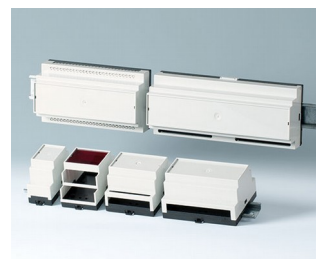


# RAILTEC B

## Versáteis Caixas para Trilho DIN

Nossa série de caixas RAILTEC B proporcionam rápida e simples montagem em trilhos DIN EN 60715 e padrão TH35.

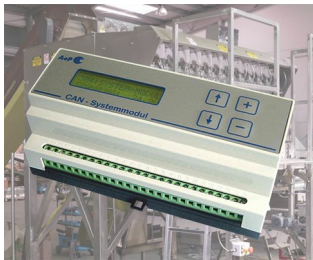
- seis tamanhos (2 a 12 módulos de largura) de acordo com DIN 43880, unidade 1
- quatro tamanhos (2, 4, 6 & 9 módulos de largura) com baixo perfil - **NOVO**: 2 versões
- totalmente isolado e protegido de acordo com VBG 4 e IEC 529/DIN VDE 0470-1
- material resistente ao fogo (UL 94 V-0)
- **versão I**: para blocos de terminais PCB 5.0/5.08mm de tamanho
- **versão II**: para plugue de cabeçalho 5.0/5.08 mm de tamanho
- **versão III**: caixa fechada para conectores frontais, conectores D-SUB, etc.
- **versão IV**: para blocos de terminais PCB 5.0/5.08 mm de tamanho (1 linha)
- **versão V**: com perfurações eliminatórias de 5.0 mm de tamanho
- **versão VI**: caixa aberta para diferentes combinações de montagem de guardas de terminais e placa de separação; opcionalmente 1 ou 2 níveis de conexão
- tampa KNX para encaixe de 2 e 4 módulos da série VI e partes superiores planas
- adequado para trilho DIN EN 60715 TH35 ou montagem diretamente na parede
- com/sem ranhuras de ventilação para uma boa dissipação de calor
- montagem flexível: posicionamento PCB em todas as 3 direções; parte da base com torres de fixação, partes superiores com arestas de guia
- clipe de trilho DIN pré-montadas na parte da base
- tampa transparente (acessório) protege os elementos de exibição e operação
- classe de proteção < IP 40



# RAILTEC B

## Exemplos de aplicação

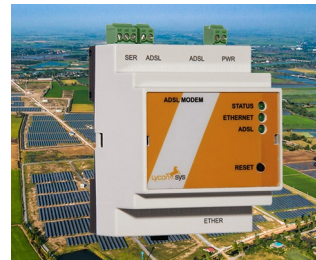
- Uso universal como caixa de instalação
- Correspondente aos regulamentos da indústria de máquinas de construção e automobilística
- Smart Factory / Industrie 4.0
- Equipamento técnico para automação predial e SMART-HOME
- Especialmente para o equipamento de controle por exemplo sistemas de iluminação



CAN BUS system module for packaging machines



Earthfault detection and short-circuit indicator



Industrial VDSL2/ADSL2 modems



Monitoring of electrical variables



Power measuring device for energy analysis



Remote meter for condition monitoring



Smart meter for electricity consumption



Water level detector

## Modificações específicas do cliente

O que você ainda precisa em seu próprio produto pessoal? Nós podemos fornecer caixas e knobs de ajuste com todas as modificações necessárias para a montagem de seus componentes eletrônicos. Opções para customizadas Railtec B



Usinagem



Pintura



Impressão



Letragem a laser



Películas decorativas



Instalação / Montagem de acessórios

# RAILTEC B

## Versões



**B6501110**  
RAILTEC B, 2 modules, Vers. V  
PC (UL 94 V-0)  
light grey RAL 7035  
35x86x58mm



**B6501111**  
RAILTEC B, 2 modules, Vers. I  
PC (UL 94 V-0)  
light grey RAL 7035  
35x86x58mm



**B6501112**  
RAILTEC B, 2 modules, Vers. II  
PC (UL 94 V-0)  
light grey RAL 7035  
35x86x58mm



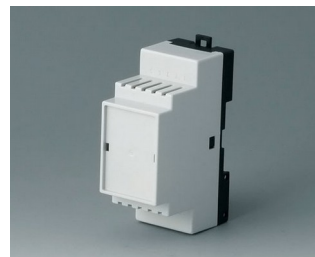
**B6501113**  
RAILTEC B, 2 modules, Vers. III  
PC (UL 94 V-0)  
light grey RAL 7035  
35x86x58mm



**B6501114**  
RAILTEC B, 2 modules, Vers. I  
PC (UL 94 V-0)  
light grey RAL 7035  
35x86x58mm



**B6501115**  
RAILTEC B, 2 modules, Vers. II  
PC (UL 94 V-0)  
light grey RAL 7035  
35x86x58mm



**B6501116**  
RAILTEC B, 2 modules, Vers. III  
PC (UL 94 V-0)  
light grey RAL 7035  
35x86x58mm



**B6501117**  
RAILTEC B, 2 modules, Vers. IV  
PC (UL 94 V-0)  
light grey RAL 7035  
35x86x58mm



**B6501118**  
RAILTEC B, 2 modules, Vers. IV  
PC (UL 94 V-0)  
light grey RAL 7035  
35x86x58mm



**B6501119**  
RAILTEC B, 2 modules, Vers. V  
PC (UL 94 V-0)  
light grey RAL 7035  
35x86x58mm



**B6501121**  
RAILTEC B, 2 modules, Vers. VI  
PC (UL 94 V-0)  
light grey RAL 7035  
35x90x58mm



**B6501223**  
RAILTEC B, 2 modules, Vers. III  
low profile  
PC (UL 94 V-0)  
light grey RAL 7035  
35x86x31,25mm



**B6501229**  
RAILTEC B, 2 modules, Vers.  
low profile  
PC (UL 94 V-0)  
light grey RAL 7035  
35x89,6x31,25mm



**B6502110**  
RAILTEC B, 3 modules, Vers. V  
PC (UL 94 V-0)  
light grey RAL 7035  
52,5x86x58mm

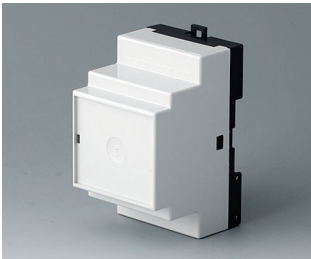


**B6502111**  
RAILTEC B, 3 modules, Vers. I  
PC (UL 94 V-0)  
light grey RAL 7035  
52,5x86x58mm



**B6502112**  
RAILTEC B, 3 modules, Vers. II  
PC (UL 94 V-0)  
light grey RAL 7035  
52,5x86x58mm

# RAILTEC B



**B6502113**  
RAILTEC B, 3 modules, Vers. III  
PC (UL 94 V-0)  
light grey RAL 7035  
52,5x86x58mm



**B6502114**  
RAILTEC B, 3 modules, Vers. I  
PC (UL 94 V-0)  
light grey RAL 7035  
52,5x86x58mm



**B6502115**  
RAILTEC B, 3 modules, Vers. II  
PC (UL 94 V-0)  
light grey RAL 7035  
52,5x86x58mm



**B6502116**  
RAILTEC B, 3 modules, Vers. III  
PC (UL 94 V-0)  
light grey RAL 7035  
52,5x86x58mm



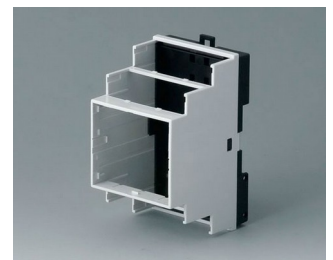
**B6502117**  
RAILTEC B, 3 modules, Vers. IV  
PC (UL 94 V-0)  
light grey RAL 7035  
52,5x86x58mm



**B6502118**  
RAILTEC B, 3 modules, Vers. IV  
PC (UL 94 V-0)  
light grey RAL 7035  
52,5x86x58mm



**B6502119**  
RAILTEC B, 3 modules, Vers. V  
PC (UL 94 V-0)  
light grey RAL 7035  
52,5x86x58mm



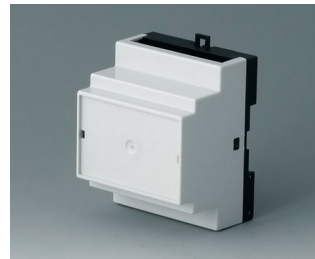
**B6502121**  
RAILTEC B, 3 modules, Vers. VI  
PC (UL 94 V-0)  
light grey RAL 7035  
52,5x90x58mm



**B6503110**  
RAILTEC B, 4 modules, Vers. V  
PC (UL 94 V-0)  
light grey RAL 7035  
70x86x58mm



**B6503111**  
RAILTEC B, 4 modules, Vers. I  
PC (UL 94 V-0)  
light grey RAL 7035  
70x86x58mm



**B6503112**  
RAILTEC B, 4 modules, Vers. II  
PC (UL 94 V-0)  
light grey RAL 7035  
70x86x58mm



**B6503113**  
RAILTEC B, 4 modules, Vers. III  
PC (UL 94 V-0)  
light grey RAL 7035  
70x86x58mm



**B6503114**  
RAILTEC B, 4 modules, Vers. I  
PC (UL 94 V-0)  
light grey RAL 7035  
70x86x58mm



**B6503115**  
RAILTEC B, 4 modules, Vers. II  
PC (UL 94 V-0)  
light grey RAL 7035  
70x86x58mm



**B6503116**  
RAILTEC B, 4 modules, Vers. III  
PC (UL 94 V-0)  
light grey RAL 7035  
70x86x58mm



**B6503117**  
RAILTEC B, 4 modules, Vers. IV  
PC (UL 94 V-0)  
light grey RAL 7035  
70x86x58mm

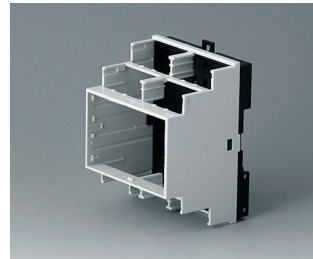
# RAILTEC B



**B6503118**  
RAILTEC B, 4 modules, Vers. IV  
PC (UL 94 V-0)  
light grey RAL 7035  
70x86x58mm



**B6503119**  
RAILTEC B, 4 modules, Vers. V  
PC (UL 94 V-0)  
light grey RAL 7035  
70x86x58mm



**B6503121**  
RAILTEC B, 4 modules, Vers. VI  
PC (UL 94 V-0)  
light grey RAL 7035  
70x90x58mm



**B6503223**  
RAILTEC B, 4 modules, Vers. III  
low profile  
PC (UL 94 V-0)  
light grey RAL 7035  
70x86x31,25mm



**B6503229**  
RAILTEC B, 4 modules, Vers.  
low profile  
PC (UL 94 V-0)  
light grey RAL 7035  
70x89,6x31,25mm



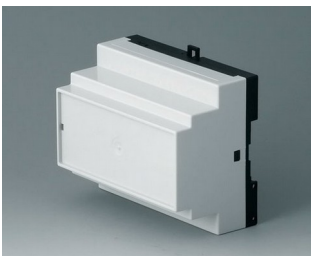
**B6504110**  
RAILTEC B, 6 modules, Vers. V  
PC (UL 94 V-0)  
light grey RAL 7035  
105x86x59mm



**B6504111**  
RAILTEC B, 6 modules, Vers. I  
PC (UL 94 V-0)  
light grey RAL 7035  
105x86x59mm



**B6504112**  
RAILTEC B, 6 modules, Vers. II  
PC (UL 94 V-0)  
light grey RAL 7035  
105x86x59mm



**B6504113**  
RAILTEC B, 6 modules, Vers. III  
PC (UL 94 V-0)  
light grey RAL 7035  
105x86x59mm



**B6504114**  
RAILTEC B, 6 modules, Vers. I  
PC (UL 94 V-0)  
light grey RAL 7035  
105x86x59mm



**B6504115**  
RAILTEC B, 6 modules, Vers. II  
PC (UL 94 V-0)  
light grey RAL 7035  
105x86x59mm



**B6504116**  
RAILTEC B, 6 modules, Vers. III  
PC (UL 94 V-0)  
light grey RAL 7035  
105x86x59mm



**B6504117**  
RAILTEC B, 6 modules, Vers. IV  
PC (UL 94 V-0)  
light grey RAL 7035  
105x86x59mm



**B6504118**  
RAILTEC B, 6 modules, Vers. IV  
PC (UL 94 V-0)  
light grey RAL 7035  
105x86x59mm



**B6504119**  
RAILTEC B, 6 modules, Vers. V  
PC (UL 94 V-0)  
light grey RAL 7035  
105x86x59mm



**B6504121**  
RAILTEC B, 6 modules, Vers. VI  
PC (UL 94 V-0)  
light grey RAL 7035  
105x90x58mm

# RAILTEC B



**B6504223**  
RAILTEC B, 6 modules, Vers. III  
low profile  
PC (UL 94 V-0)  
light grey RAL 7035  
105x86x31,25mm



**B6504229**  
RAILTEC B, 6 modules, Vers.  
low profile  
PC (UL 94 V-0)  
light grey RAL 7035  
105x89,6x31,25mm



**B6505110**  
RAILTEC B, 9 modules, Vers. V  
PC (UL 94 V-0)  
light grey RAL 7035  
157x86x59mm



**B6505111**  
RAILTEC B, 9 modules, Vers. I  
PC (UL 94 V-0)  
light grey RAL 7035  
157x86x59mm



**B6505112**  
RAILTEC B, 9 modules, Vers. II  
PC (UL 94 V-0)  
light grey RAL 7035  
157x86x59mm



**B6505113**  
RAILTEC B, 9 modules, Vers. III  
PC (UL 94 V-0)  
light grey RAL 7035  
157x86x59mm



**B6505114**  
RAILTEC B, 9 modules, Vers. I  
PC (UL 94 V-0)  
light grey RAL 7035  
157x86x59mm



**B6505115**  
RAILTEC B, 9 modules, Vers. II  
PC (UL 94 V-0)  
light grey RAL 7035  
157x86x59mm



**B6505116**  
RAILTEC B, 9 modules, Vers. III  
PC (UL 94 V-0)  
light grey RAL 7035  
157x86x59mm



**B6505117**  
RAILTEC B, 9 modules, Vers. IV  
PC (UL 94 V-0)  
light grey RAL 7035  
157x86x59mm



**B6505118**  
RAILTEC B, 9 modules, Vers. IV  
PC (UL 94 V-0)  
light grey RAL 7035  
157x86x59mm



**B6505119**  
RAILTEC B, 9 modules, Vers. V  
PC (UL 94 V-0)  
light grey RAL 7035  
157x86x59mm



**B6505121**  
RAILTEC B, 9 modules, Vers. VI  
PC (UL 94 V-0)  
light grey RAL 7035  
157x90x58mm



**B6505223**  
RAILTEC B, 9 modules, Vers. III  
low profile  
PC (UL 94 V-0)  
light grey RAL 7035  
157x86x31,25mm



**B6505229**  
RAILTEC B, 9 modules, Vers.  
low profile  
PC (UL 94 V-0)  
light grey RAL 7035  
157,5x89,6x31,25mm



**B6506110**  
RAILTEC B, 12 modules, Vers. V  
PC (UL 94 V-0)  
light grey RAL 7035  
210x90x58mm

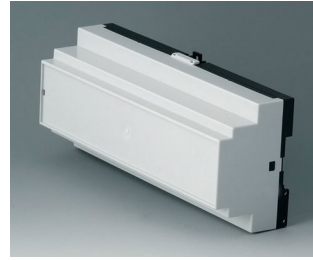
# RAILTEC B



**B6506111**  
RAILTEC B, 12 modules, Vers. I  
PC (UL 94 V-0)  
light grey RAL 7035  
210x90x58mm



**B6506112**  
RAILTEC B, 12 modules, Vers. II  
PC (UL 94 V-0)  
light grey RAL 7035  
210x90x58mm



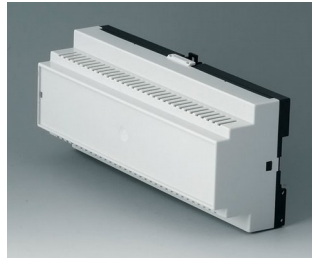
**B6506113**  
RAILTEC B, 12 modules, Vers. III  
PC (UL 94 V-0)  
light grey RAL 7035  
210x90x58mm



**B6506114**  
RAILTEC B, 12 modules, Vers. I  
PC (UL 94 V-0)  
light grey RAL 7035  
210x90x58mm



**B6506115**  
RAILTEC B, 12 modules, Vers. II  
PC (UL 94 V-0)  
light grey RAL 7035  
210x90x58mm



**B6506116**  
RAILTEC B, 12 modules, Vers. III  
PC (UL 94 V-0)  
light grey RAL 7035  
210x90x58mm



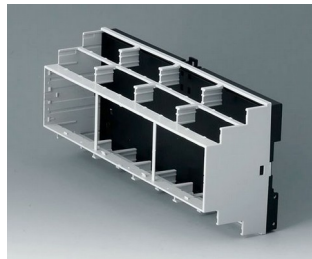
**B6506117**  
RAILTEC B, 12 modules, Vers. IV  
PC (UL 94 V-0)  
light grey RAL 7035  
210x90x58mm



**B6506118**  
RAILTEC B, 12 modules, Vers. IV  
PC (UL 94 V-0)  
light grey RAL 7035  
210x90x58mm



**B6506119**  
RAILTEC B, 12 modules, Vers. V  
PC (UL 94 V-0)  
light grey RAL 7035  
210x90x58mm



**B6506121**  
RAILTEC B, 12 modules, Vers. VI  
PC (UL 94 V-0)  
light grey RAL 7035  
210x90x58mm



**B6511111**  
RAILTEC B, 2 modules, Vers. XI  
PC (UL 94 V-0)  
light grey RAL 7035  
35x86x58mm



**B6511112**  
RAILTEC B, 2 modules, Vers. XII  
PC (UL 94 V-0)  
light grey RAL 7035  
35x86x58mm



**B6511113**  
RAILTEC B, 2 modules, Vers. XIII  
PC (UL 94 V-0)  
light grey RAL 7035  
35x86x58mm



**B6513111**  
RAILTEC B, 4 modules, Vers. XI  
PC (UL 94 V-0)  
light grey RAL 7035  
70x86x58mm



**B6513112**  
RAILTEC B, 4 modules, Vers. XII  
PC (UL 94 V-0)  
light grey RAL 7035  
70x86x58mm



**B6513113**  
RAILTEC B, 4 modules, Vers. XIII  
PC (UL 94 V-0)  
light grey RAL 7035  
70x86x58mm

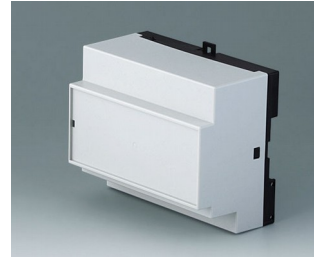
# RAILTEC B



**B6514111**  
RAILTEC B, 6 modules, Vers. XI  
PC (UL 94 V-0)  
light grey RAL 7035  
105x86x59mm



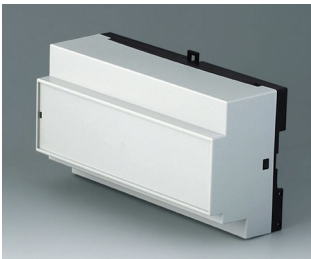
**B6514112**  
RAILTEC B, 6 modules, Vers. XII  
PC (UL 94 V-0)  
light grey RAL 7035  
105x86x59mm



**B6514113**  
RAILTEC B, 6 modules, Vers.  
XIII  
PC (UL 94 V-0)  
light grey RAL 7035  
105x86x59mm



**B6515111**  
RAILTEC B, 9 modules, Vers. XI  
PC (UL 94 V-0)  
light grey RAL 7035  
157x86x59mm



**B6515112**  
RAILTEC B, 9 modules, Vers. XII  
PC (UL 94 V-0)  
light grey RAL 7035  
157x86x59mm



**B6515113**  
RAILTEC B, 9 modules, Vers.  
XIII  
PC (UL 94 V-0)  
light grey RAL 7035  
157x86x59mm

## Accessory "wall/holder"

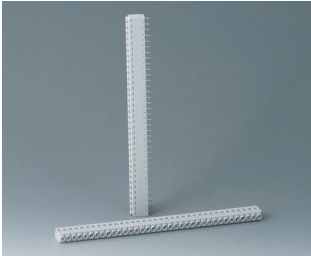


**B6600334**  
Wall suspension elements  
PPO (UL 94 V-0)  
black

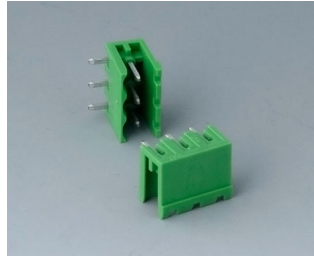


# RAILTEC B

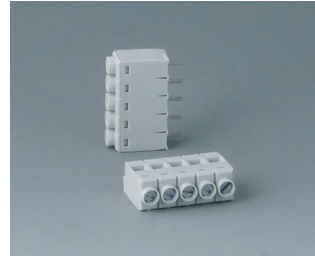
## Accessory "terminals"



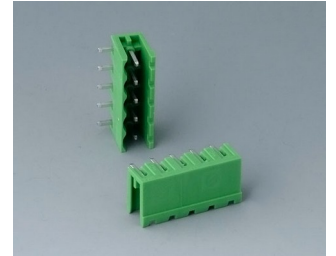
**B6600111**  
Terminal block, block 5.0  
PA 68 (UL 94 V-0)  
light grey



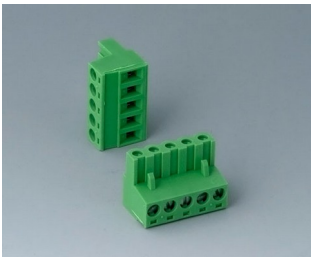
**B6600222**  
Plug header, block 5.08  
PA 68 (UL 94 V-0)



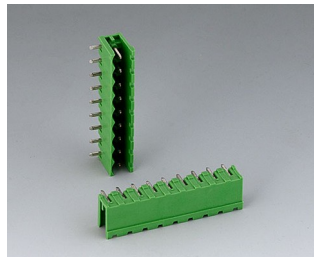
**B6601111**  
Terminal block, block 5.0  
PA 68 (UL 94 V-0)



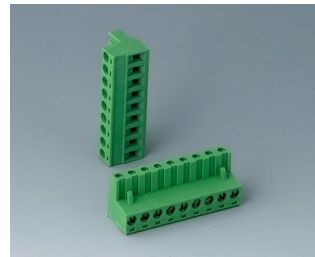
**B6601222**  
Plug header, block 5.08  
PA 6 (UL 94 V-0)



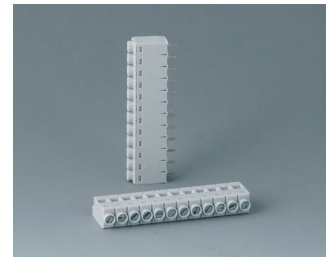
**B6601223**  
Plug header, block 5.08  
PA 6 (UL 94 V-0)



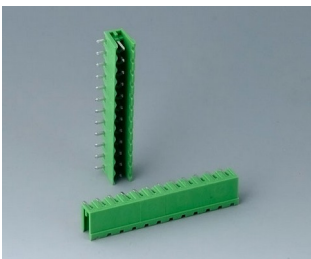
**B6602222**  
Plug header, block 5.08  
PA 6 (UL 94 V-0)



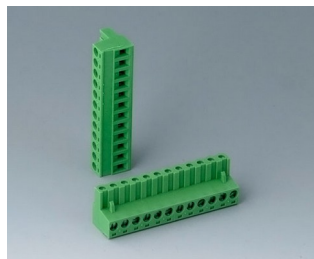
**B6602223**  
Plug header, block 5.08  
PA 6 (UL 94 V-0)



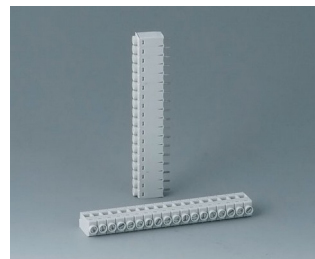
**B6603111**  
Terminal block, block 5.0  
PA 68 (UL 94 V-0)



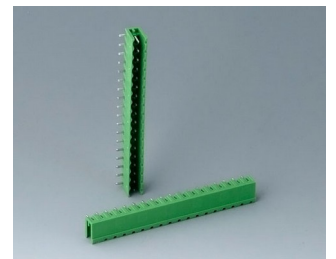
**B6603222**  
Plug header, block 5.08  
PA 6 (UL 94 V-0)



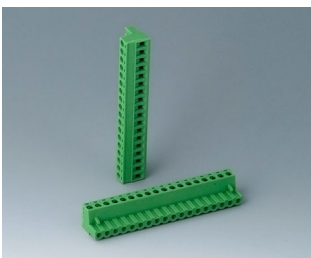
**B6603223**  
Plug header, block 5.08  
PA 6 (UL 94 V-0)



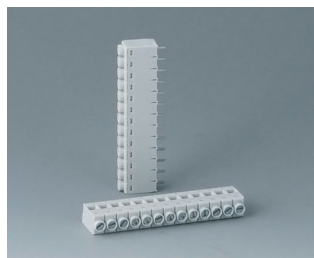
**B6604111**  
Terminal block, block 5.0  
PA 68 (UL 94 V-0)



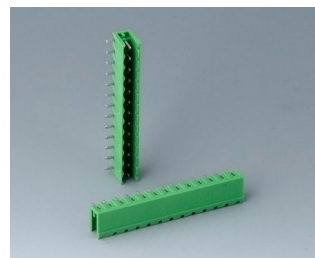
**B6604222**  
Plug header, block 5.08  
PA 68 (UL 94 V-0)



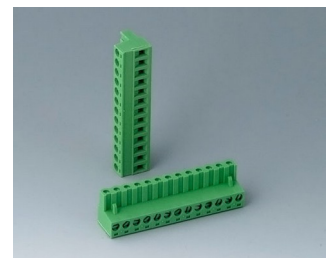
**B6604223**  
Plug header, block 5.08  
PA 68 (UL 94 V-0)



**B6605111**  
Terminal block, block 5.0  
PA 68 (UL 94 V-0)

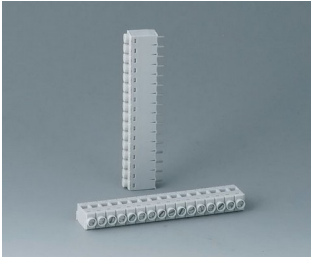


**B6605222**  
Plug header, block 5.08  
PA 6 (UL 94 V-0)

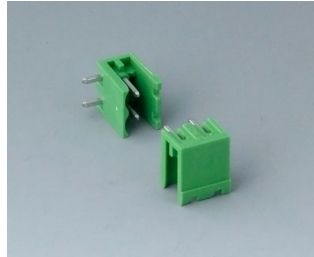


**B6605223**  
Plug header, block 5.08  
PA 6 (UL 94 V-0)

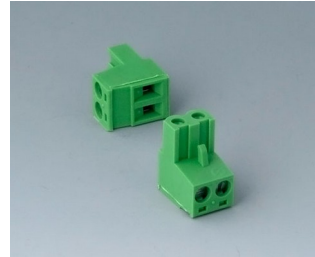
# RAILTEC B



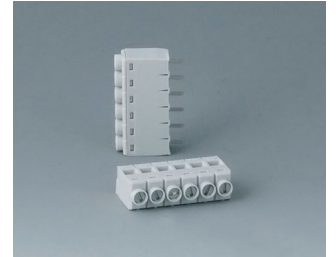
**B6606111**  
Terminal block, block 5.0  
PA 68 (UL 94 V-0)



**B6606222**  
Plug header, block 5.08  
PA 6 (UL 94 V-0)



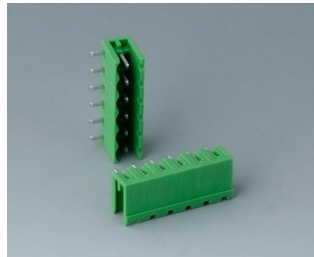
**B6606223**  
Plug header, block 5.08  
PA 6 (UL 94 V-0)



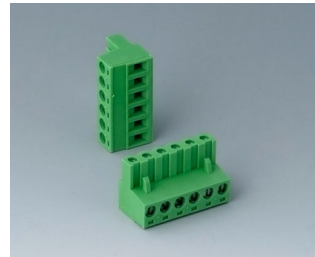
**B6607111**  
Terminal block, block 5.0  
PA 68 (UL 94 V-0)



**B6608111**  
Terminal block, block 5.0  
PA 68 (UL 94 V-0)



**B6608222**  
Plug header, block 5.08  
PA 68 (UL 94 V-0)



**B6608223**  
Plug header, block 5.08  
PA 68 (UL 94 V-0)

## Accessory "terminal guards"



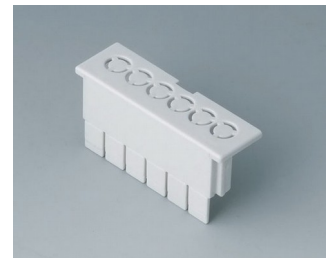
**B6607140**  
Terminal guards, flat  
PC (UL 94 V-0)  
light grey



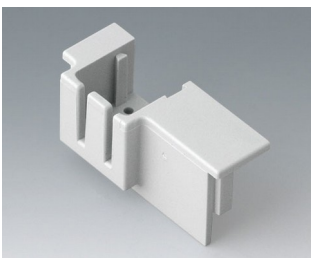
**B6607141**  
Terminal guards, flat  
PC (UL 94 V-0)  
light grey



**B6607142**  
Terminal guards, flat  
PC (UL 94 V-0)  
light grey



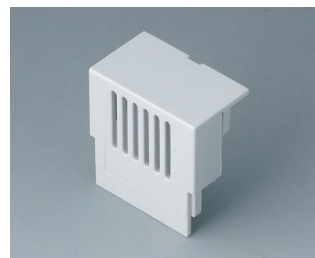
**B6607143**  
Terminal guards, flat  
PC (UL 94 V-0)  
light grey



**B6607145**  
KNX Cover, flat  
PC (UL 94 V-0)  
light grey



**B6607160**  
Terminal guards, high  
PC (UL 94 V-0)  
light grey



**B6607161**  
Terminal guards, high  
PC (UL 94 V-0)  
light grey



**B6607162**  
Terminal guards, high  
PC (UL 94 V-0)  
light grey

# RAILTEC B



**B6607163**  
Terminal guards, high  
PC (UL 94 V-0)  
light grey



**B6607191**  
Partition plate  
PC (UL 94 V-0)  
light grey



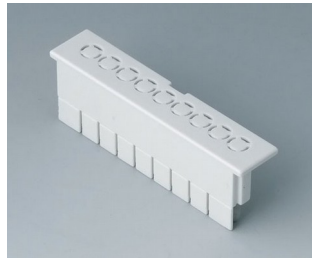
**B6608140**  
Terminal guards, flat  
PC (UL 94 V-0)  
light grey



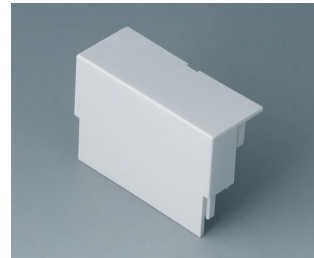
**B6608141**  
Terminal guards, flat  
PC (UL 94 V-0)  
light grey



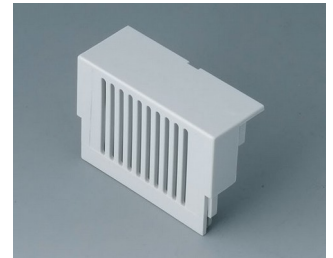
**B6608142**  
Terminal guards, flat  
PC (UL 94 V-0)  
light grey



**B6608143**  
Terminal guards, flat  
PC (UL 94 V-0)  
light grey



**B6608160**  
Terminal guards, high  
PC (UL 94 V-0)  
light grey



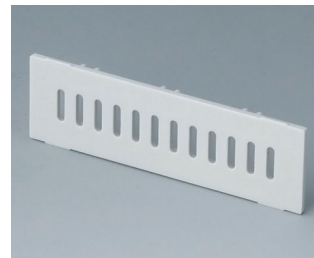
**B6608161**  
Terminal guards, high  
PC (UL 94 V-0)  
light grey



**B6608162**  
Terminal guards, high  
PC (UL 94 V-0)  
light grey



**B6608163**  
Terminal guards, high  
PC (UL 94 V-0)  
light grey



**B6608191**  
Partition plate  
PC (UL 94 V-0)  
light grey

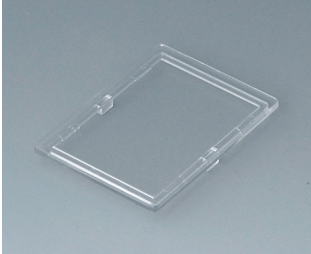
## Accessory "screws"



**A0305031**  
Self-tapping screws 2.5 x 6 mm  
(PZ1)

# RAILTEC B

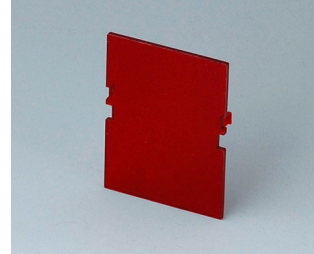
## Accessory



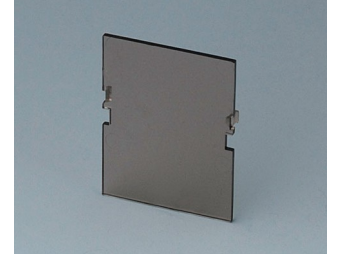
**B6601100**  
Lid, 2 modules  
PC (UL 94 V-0)  
transparent



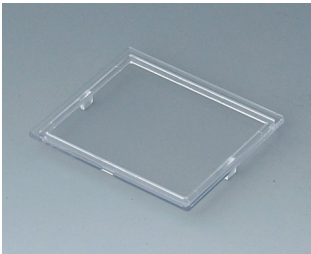
**B6601180**  
Front panel, 2 modules, Vers. VI  
PC (UL 94 V-0)  
light grey  
32x42mm



**B6601480**  
Front panel, 2 modules, Vers. VI  
PC (UL 94 V-0)  
red transparent  
32x42mm



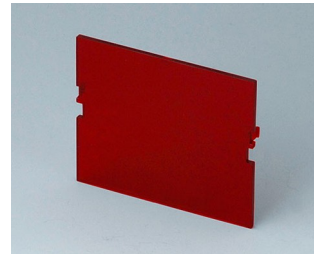
**B6601580**  
Front panel, 2 modules, Vers. VI  
PC (UL 94 V-0)  
smoked glass  
32x42mm



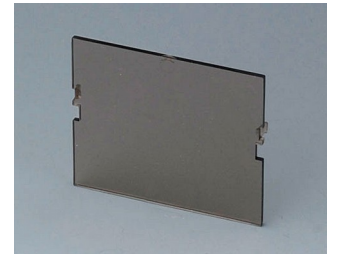
**B6602100**  
Lid, 3 modules  
PC (UL 94 V-0)  
transparent



**B6602180**  
Front panel, 3 modules, Vers. VI  
PC (UL 94 V-0)  
light grey  
49x42mm



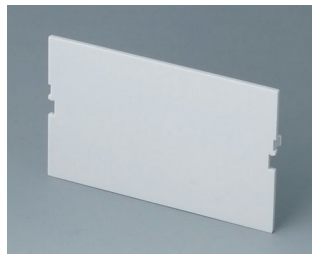
**B6602480**  
Front panel, 3 modules, Vers. VI  
PC (UL 94 V-0)  
red transparent  
49x42mm



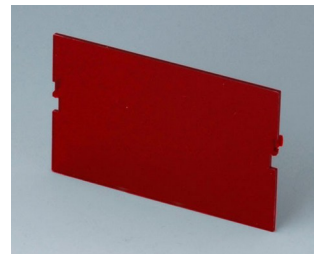
**B6602580**  
Front panel, 3 modules, Vers. VI  
PC (UL 94 V-0)  
smoked glass  
42x49mm



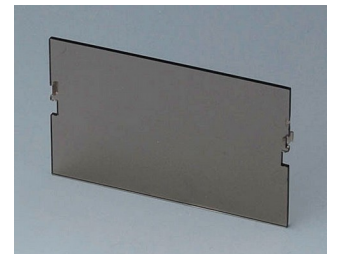
**B6603100**  
Lid, 4 modules  
PC (UL 94 V-0)  
transparent



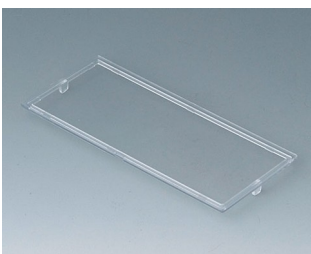
**B6603180**  
Front panel, 4 modules, Vers. VI  
PC (UL 94 V-0)  
light grey  
67x42mm



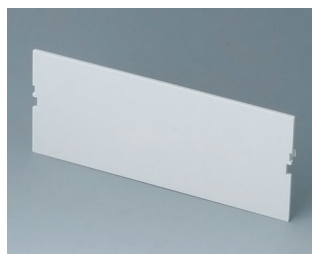
**B6603480**  
Front panel, 4 modules, Vers. VI  
PC (UL 94 V-0)  
red transparent  
67x42mm



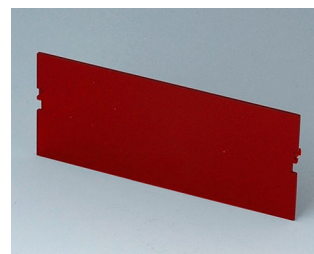
**B6603580**  
Front panel, 4 modules, Vers. VI  
PC (UL 94 V-0)  
smoked glass  
67x42mm



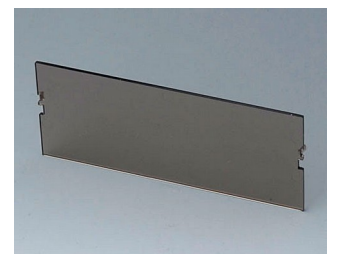
**B6604100**  
Lid, 6 modules  
PC (UL 94 V-0)  
transparent



**B6604180**  
Front panel, 6 modules, Vers. VI  
PC (UL 94 V-0)  
light grey  
102x42mm

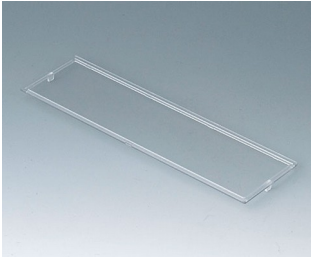


**B6604480**  
Front panel, 6 modules, Vers. VI  
PC (UL 94 V-0)  
red transparent  
102x42mm

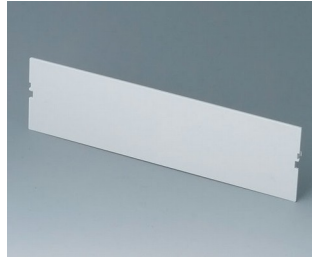


**B6604580**  
Front panel, 6 modules, Vers. VI  
PC (UL 94 V-0)  
smoked glass  
102x42mm

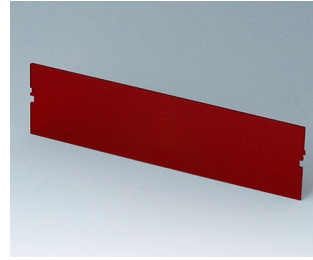
# RAILTEC B



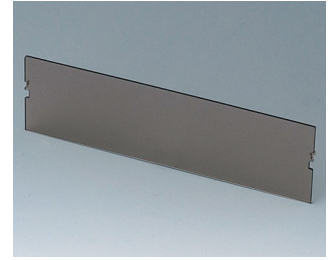
**B6605100**  
 Lid, 9 modules  
 PC (UL 94 V-0)  
 transparent



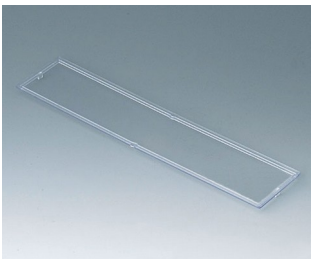
**B6605180**  
 Front panel, 9 modules, Vers. VI  
 PC (UL 94 V-0)  
 light grey  
 155x42mm



**B6605480**  
 Front panel, 9 modules, Vers. VI  
 PC (UL 94 V-0)  
 red transparent  
 155x42mm



**B6605580**  
 Front panel, 9 modules, Vers. VI  
 PC (UL 94 V-0)  
 smoked glass  
 155x42mm



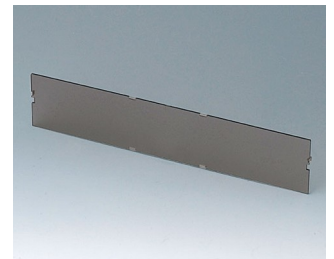
**B6606100**  
 Lid, 12 modules  
 PC (UL 94 V-0)  
 transparent



**B6606180**  
 Front panel, 12 modules, Vers. VI  
 PC (UL 94 V-0)  
 light grey  
 206x42mm



**B6606480**  
 Front panel, 12 modules, Vers. VI  
 PC (UL 94 V-0)  
 red transparent  
 206x42mm



**B6606580**  
 Front panel, 12 modules, Vers. VI  
 PC (UL 94 V-0)  
 smoked glass  
 206x42mm

Sujeito à modificações técnicas sem aviso prévio. © de OKW Gehäusesysteme, Buchen/Alemanha.