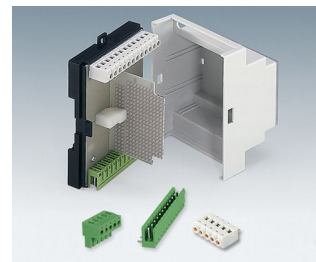
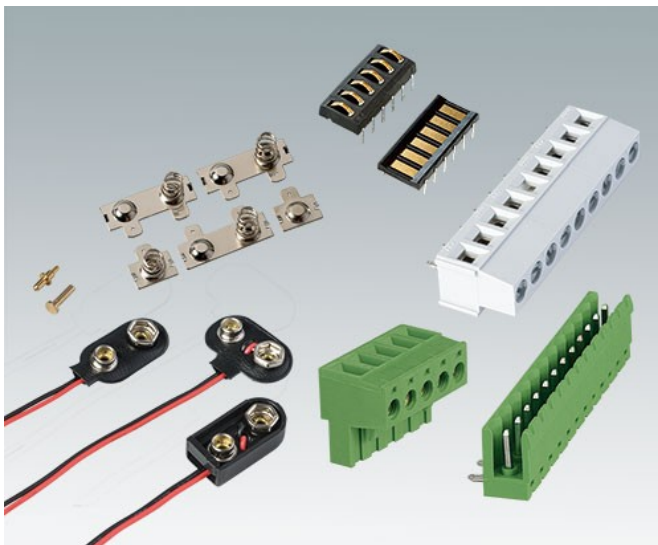
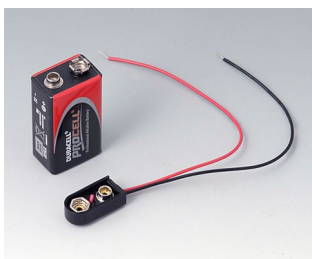


CONTATOS, CONEXÕES

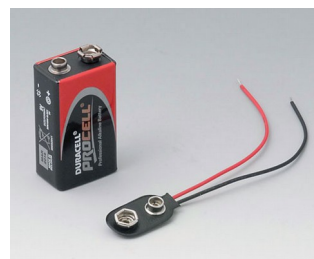
- Nós oferecemos uma gama de contatos para energia e transmissão de dados. As superfícies banhadas a ouro são altamente condutoras e resistentes à corrosão, garantindo assim, a segura e confiável conexão entre as caixas e estação/suporte.
- O alcance da OKW já inclui uma seleção de caixas, estações e suportes com aberturas pré-moldadas para encaixar esses contatos. Desta forma, o usuário pode carregar as baterias no dispositivo e, em seguida, transmitir dados sem fio no campo - ideal para equipamento de comunicação móvel!
- Enorme gama de cliques para bateria, adequados para caixas OKW.
- Diferentes blocos de terminais e plugues.



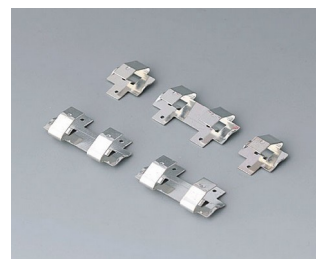
Versões



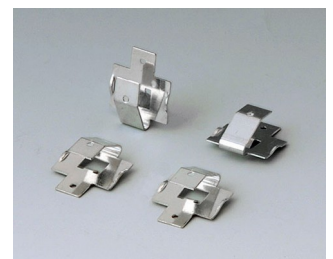
A9156002
Plug-in contact, 1 x 9 V (PP3)



A9160003
Plug-in contact, 1 x 9 V (PP3)



A9161001
Set of battery clips, 4 x AA
Steel
tin-plated



A9161002
Set of battery clips, 2 x 9 V or 4 x AA
Steel
tin-plated

CONTATOS, CONEXÕES



A9174006
Set of battery clips, 1 x 9 V
Steel
tin-plated



A9190002
Set of battery clips,
2xN/2xAA/2xAAA
Steel
tin-plated



A9190003
Set of battery clips,
2xN/2xAA/2xAAA
Steel
nickel-plated



A9190010
Set of battery clips, 4 x AA
Steel
nickel-plated



A9190011
Set of battery clips, 2 x AA
Steel
nickel-plated



A9190012
Set of battery clips, 4 x AA
Steel
nickel-plated



A9190013
Set of battery clips, 4 x AA
Steel
nickel-plated



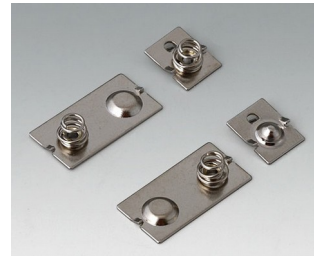
A9190014
Set of battery clips, 2 x AA
Steel
nickel-plated



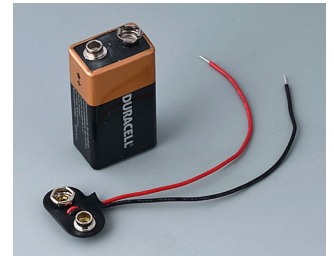
A9190015
Set of battery clips, 2 x AA
Steel
nickel-plated



A9190023
Set of battery clips, 3 x AA
Steel
nickel-plated



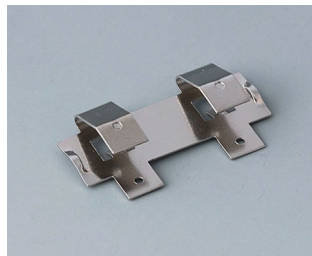
A9190024
Set of battery clips, 3 x AAA
Steel
nickel-plated



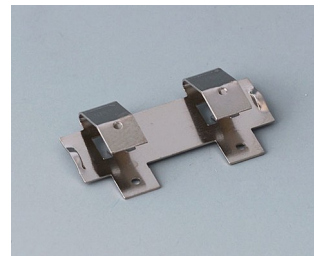
A9193002
Plug-in contacts, 1 x 9 V (PP3)



A9193003
Battery-clips, double contact
Steel
tin-plated



A9193005
Battery clips, double contact
Steel
nickel-plated



A9193008
Battery clips, double contact
CuBe
nickel-plated



A9193013
Battery-clips, double contact
Steel
nickel-plated

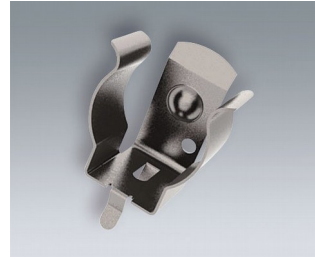
CONTATOS, CONEXÕES



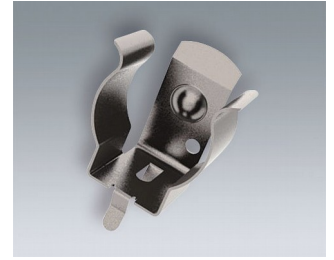
A9193014
Battery-clips, double contact
Steel
nickel-plated



A9193030
Contact pin
gold-plated



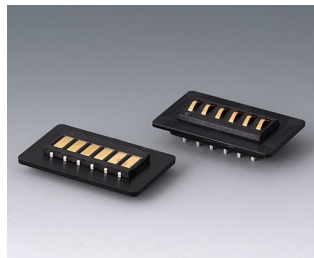
A9193035
Battery clip, AA
Steel
nickel-plated



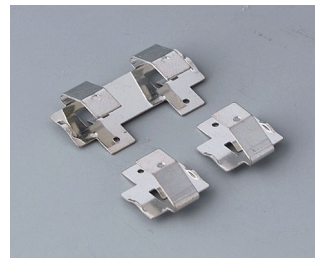
A9193036
Battery clip, AAA
Steel
nickel-plated



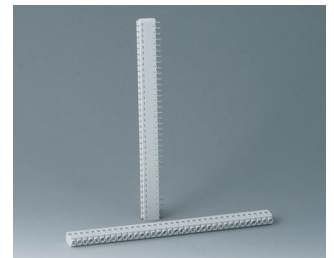
A9193042
Mounting plates for contacts
ABS (UL 94 HB)
black RAL 9005



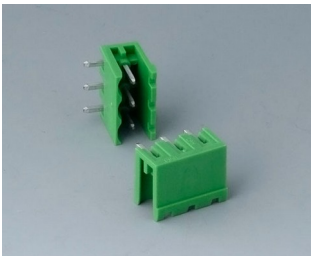
A9193044
Contacting kit, 6-pin
ABS (UL 94 HB)
black RAL 9005



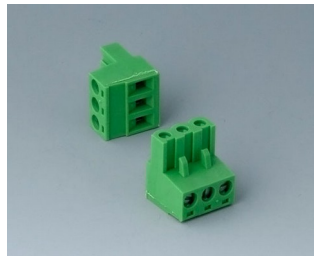
A9194001
Set of battery clips, 2 x AA
Steel
tin-plated



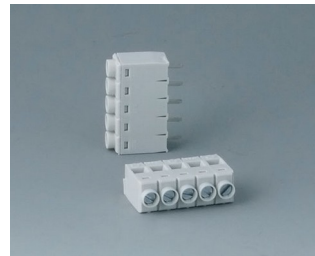
B6600111
Terminal block, block 5.0
PA 68 (UL 94 V-0)
light grey



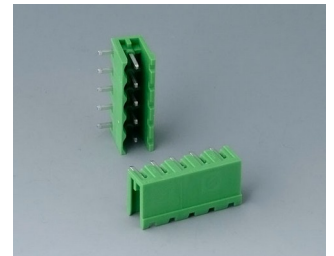
B6600222
Plug header, block 5.08
PA 68 (UL 94 V-0)



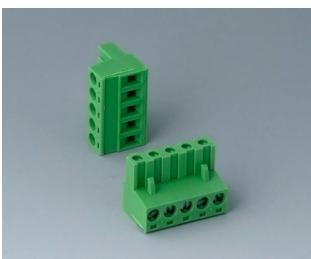
B6600223
Plug header, block 5.08
PA 68 (UL 94 V-0)



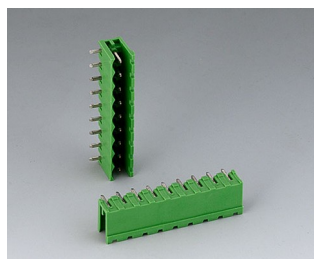
B6601111
Terminal block, block 5.0
PA 68 (UL 94 V-0)



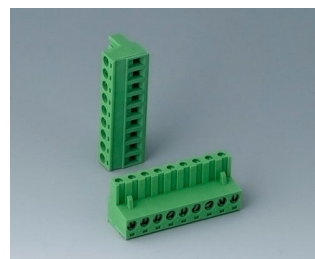
B6601222
Plug header, block 5.08
PA 6 (UL 94 V-0)



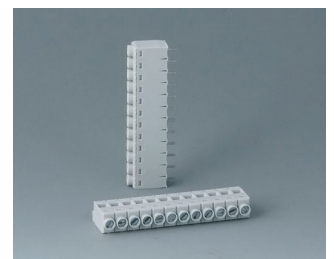
B6601223
Plug header, block 5.08
PA 6 (UL 94 V-0)



B6602222
Plug header, block 5.08
PA 6 (UL 94 V-0)

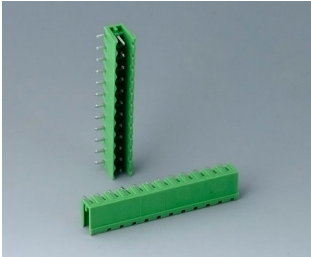


B6602223
Plug header, block 5.08
PA 6 (UL 94 V-0)

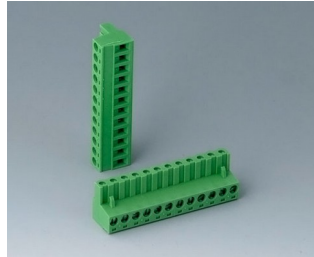


B6603111
Terminal block, block 5.0
PA 68 (UL 94 V-0)

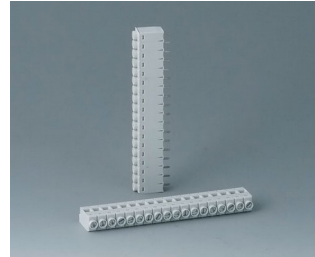
CONTATOS, CONEXÕES



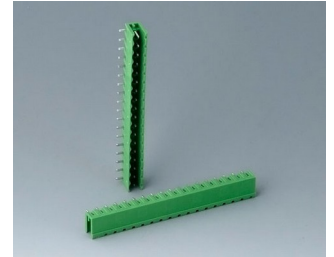
B6603222
 Plug header, block 5.08
 PA 6 (UL 94 V-0)



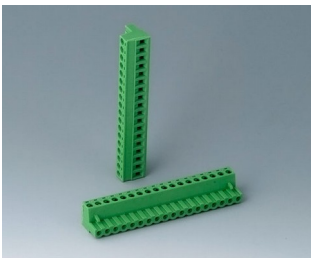
B6603223
 Plug header, block 5.08
 PA 6 (UL 94 V-0)



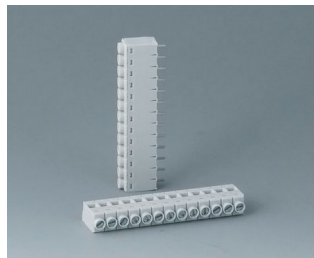
B6604111
 Terminal block, block 5.0
 PA 68 (UL 94 V-0)



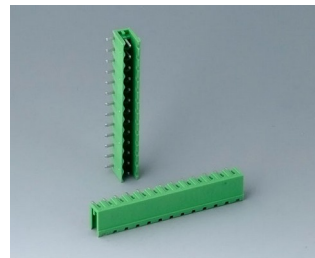
B6604222
 Plug header, block 5.08
 PA 68 (UL 94 V-0)



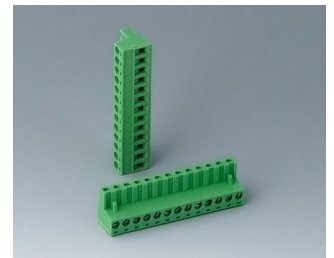
B6604223
 Plug header, block 5.08
 PA 68 (UL 94 V-0)



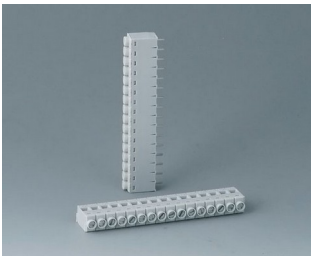
B6605111
 Terminal block, block 5.0
 PA 68 (UL 94 V-0)



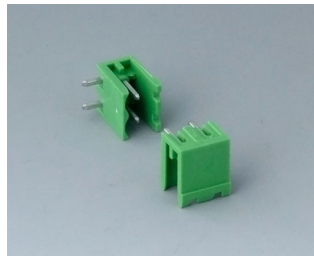
B6605222
 Plug header, block 5.08
 PA 6 (UL 94 V-0)



B6605223
 Plug header, block 5.08
 PA 6 (UL 94 V-0)



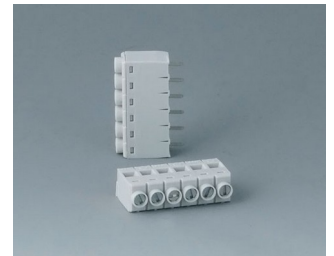
B6606111
 Terminal block, block 5.0
 PA 68 (UL 94 V-0)



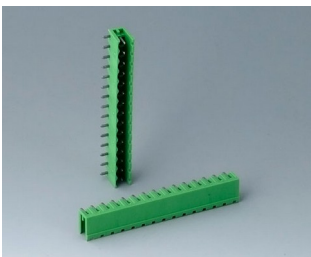
B6606222
 Plug header, block 5.08
 PA 6 (UL 94 V-0)



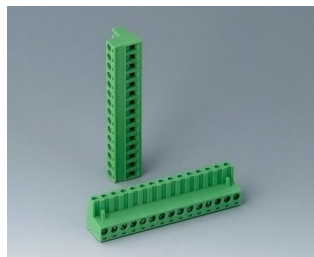
B6606223
 Plug header, block 5.08
 PA 6 (UL 94 V-0)



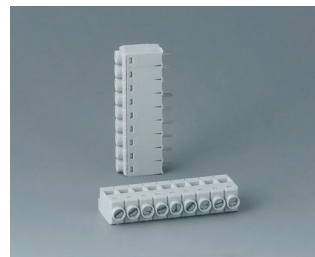
B6607111
 Terminal block, block 5.0
 PA 68 (UL 94 V-0)



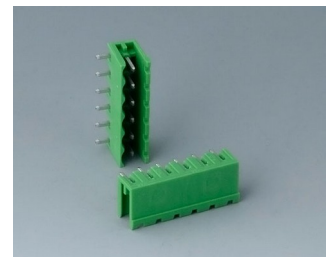
B6607222
 Plug header, block 5.08
 PA 6 (UL 94 V-0)



B6607223
 Plug header, block 5.08
 PA 6 (UL 94 V-0)

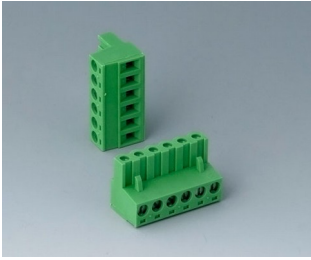


B6608111
 Terminal block, block 5.0
 PA 68 (UL 94 V-0)



B6608222
 Plug header, block 5.08
 PA 68 (UL 94 V-0)

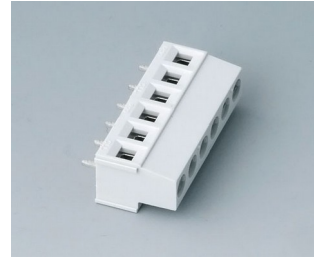
CONTATOS, CONEXÕES



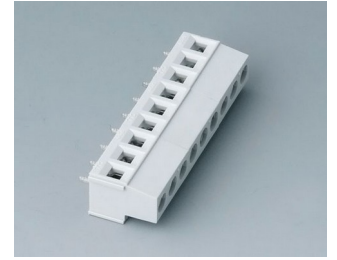
B6608223
Plug header, block 5.08
PA 68 (UL 94 V-0)



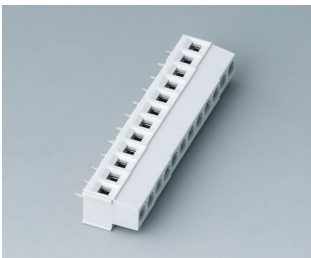
B6800650
Terminal block, block 5.08
PA 68 (UL 94 V-0)
light grey



B6801650
Terminal block, block 5.08
PA 68 (UL 94 V-0)
light grey



B6802650
Terminal block, block 5.08
PA 68 (UL 94 V-0)
light grey

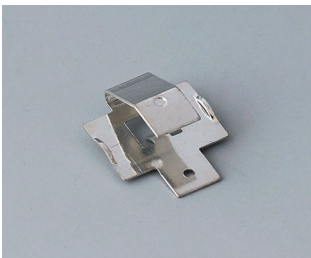


B6803650
Terminal block, block 5.08
PA 68 (UL 94 V-0)
light grey

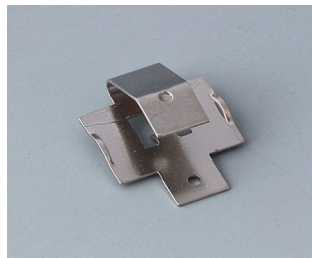


B6804650
Terminal block, block 5.08
PA 68 (UL 94 V-0)
light grey

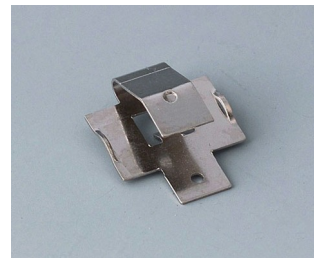
System components to complete



A9193004
Battery-clips, single contact
Steel
tin-plated



A9193006
Battery-clips, single contact
Steel
nickel-plated



A9193009
Battery clips, single contact
CuBe
nickel-plated



A9193011
Battery-clips, single contact
Steel
nickel-plated



A9193012
Battery-clips, single contact
Steel
nickel-plated

CONTATOS, CONEXÕES

Accessory to complete

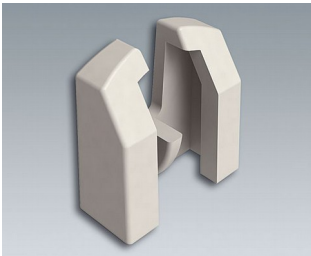


A9193031
Spring contact
gold-plated

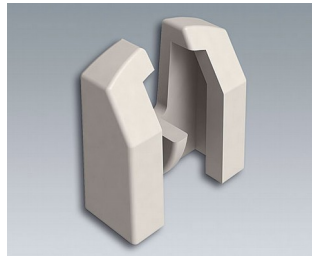


A9193032
Spring contact

Accessory "battery"

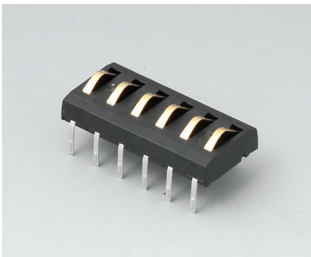


A9193033
Polarity reversal protection
device, positive terminal AA
ABS (UL 94 HB)
off-white RAL 9002

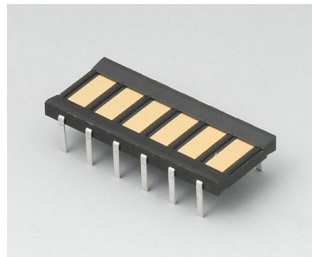


A9193034
Polarity reversal protection
device, positive terminal AAA
ABS (UL 94 HB)
off-white RAL 9002

Accessory



A9178007
Contacts, male
gold-plated



A9178008
Contacts, female
gold-plated

Sujeito à modificações técnicas sem aviso prévio. © de OKW Gehäusesysteme, Buchen/Alemanha.