

MINI-DATA-BOX 微型通讯盒

确保优质联网通讯

MINI-DATA-BOX 微型通讯盒以其紧凑的结构和强调细节的精确设计，使其在各种室内和室外的应用令人印象深刻。优雅的角度设计柔软玩耍表面上的光线，赋予机盒新的轻盈感。

- 带优雅设计角落的现代化机盒款式
- 40 种标准款式
- 两种基本形状：S（正方形）和 E（四方形）
- 盒下部带或不带法兰，用于快速安装于墙壁或天花板上，或连接到导轨和管型材或桅杆上
- 扁平或较高箱体便于个性化安装配置以满足用户需求
- 具备易于接口连接的平面 - 简便连接性且用户使用友好性
- 通过坚固的结构与全方位的榫槽连接方式达到高度的稳固性
- 通过高防护等级 IP 65（密封件作为附件提供），达到即使在恶劣的环境中也能提供安全稳定性
- 材质为阻燃材料 ASA+PC，其标准颜色为白色和灰色, 新款：带固定法兰的机盒提供两种颜色，即白色（上部）和灰色 A（下部）
- 根据要求可提供特殊颜色
- 上下箱体带有固定电路板及内置部件用固定柱；但也可以对电子组件进行浇注灌封
- 机盒连接通过不锈钢螺钉和 Torx 驱动器

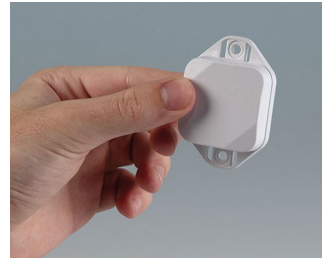
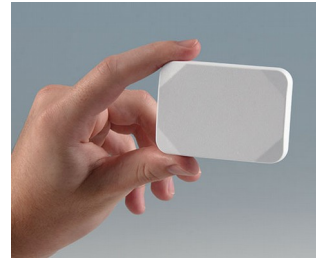
设计师申明

“一个小东西，几乎看不见，但无论在哪里需要的地方，可能是系统中的重要组成构件，如果没有这个东西，系统就无法工作。

结构紧凑的机盒，一方面为您的内置组件提供了优雅的保护，其设计通过略微倾斜的去角面消除了机盒的碍角，另一方面它是一个可牢固安装的坚固机盒，其上部的多个表面利用光作用，象似钻石发光，却提供产品所需的质量和功能。”

Martin Nußberger 先生，polyform 工业设计师说

MINI-DATA-BOX 微型通讯盒



MINI-DATA-BOX 微型通讯盒

应用示例

非常适用于室内和室外的小型电子应用和现代传感器技术。

- IoT/IoT 物联网/工业物联网
- 传感器技术
- 智能化物流系统
- 外围设备和界面接口设备
- 自动化技术
- 环境保护工程
- 测量与控制技术
- 保安和监控技术
- 电子信息和通信技术 (ICT)



Access authorization of transponders



Data logger crop management



Data logger for Driving Operations



Data logger in transportation



Gas detector for hazardous substances



Motion detector with sensor for automatic control



Process control



TENS device for pain therapy



Wireless Access Point

按客户要求修改加工

如何体现您的特殊产品？如有需要，我们执行所有必要的修改和精加工，提供组装完毕的机盒。产品类型用于 Mini-Data-Box 微型通讯盒

MINI-DATA-BOX 微型通讯盒



机械加工



表面涂渡



图文打印



激光打印字体



EMC 保护



制备 / 组装

类型



B1802117
MINI-DATA-BOX S40, flat
ASA+PC (UL 94 V-0)
traffic white RAL 9016
40x40x15mm
IP 65 opt., IP 40



B1802118
MINI-DATA-BOX S40, flat
ASA+PC (UL 94 V-0)
anthracite grey RAL 7016
40x40x15mm
IP 65 opt., IP 40



B1802126
MINI-DATA-BOX SF40, flat, with
flanges
ASA+PC (UL 94 V-0)
traffic white RAL 9016
40x40x15mm
IP 65 opt., IP 40



B1802127
MINI-DATA-BOX SF40, flat, with
flanges
ASA+PC (UL 94 V-0)
traffic white RAL 9016
40x40x15mm
IP 65 opt., IP 40



B1802128
MINI-DATA-BOX SF40, flat, with
flanges
ASA+PC (UL 94 V-0)
anthracite grey RAL 7016
40x40x15mm
IP 65 opt., IP 40



B1802217
MINI-DATA-BOX S40, high
ASA+PC (UL 94 V-0)
traffic white RAL 9016
40x40x20mm
IP 65 opt., IP 40



B1802218
MINI-DATA-BOX S40, high
ASA+PC (UL 94 V-0)
anthracite grey RAL 7016
40x40x20mm
IP 65 opt., IP 40



B1802226
MINI-DATA-BOX SF40, high,
with flanges
ASA+PC (UL 94 V-0)
traffic white RAL 9016
40x40x20mm
IP 65 opt., IP 40

MINI-DATA-BOX 微型通讯盒



B1802227
MINI-DATA-BOX SF40, high,
with flanges
ASA+PC (UL 94 V-0)
traffic white RAL 9016
40x40x20mm
IP 65 opt., IP 40



B1802228
MINI-DATA-BOX SF40, high,
with flanges
ASA+PC (UL 94 V-0)
anthracite grey RAL 7016
40x40x20mm
IP 65 opt., IP 40



B1804117
MINI-DATA-BOX S50, flat
ASA+PC (UL 94 V-0)
traffic white RAL 9016
50x50x15mm
IP 65 opt., IP 40



B1804118
MINI-DATA-BOX S50, flat
ASA+PC (UL 94 V-0)
anthracite grey RAL 7016
50x50x15mm
IP 65 opt., IP 40



B1804126
MINI-DATA-BOX SF50, flat, with
flanges
ASA+PC (UL 94 V-0)
traffic white RAL 9016
50x50x15mm
IP 65 opt., IP 40



B1804127
MINI-DATA-BOX SF50, flat, with
flanges
ASA+PC (UL 94 V-0)
traffic white RAL 9016
50x50x15mm
IP 65 opt., IP 40



B1804128
MINI-DATA-BOX SF50, flat, with
flanges
ASA+PC (UL 94 V-0)
anthracite grey RAL 7016
50x50x15mm
IP 65 opt., IP 40



B1804217
MINI-DATA-BOX S50, high
ASA+PC (UL 94 V-0)
traffic white RAL 9016
50x50x20mm
IP 65 opt., IP 40



B1804218
MINI-DATA-BOX S50, high
ASA+PC (UL 94 V-0)
anthracite grey RAL 7016
50x50x20mm
IP 65 opt., IP 40



B1804226
MINI-DATA-BOX SF50, high,
with flanges
ASA+PC (UL 94 V-0)
traffic white RAL 9016
50x50x20mm
IP 65 opt., IP 40



B1804227
MINI-DATA-BOX SF50, high,
with flanges
ASA+PC (UL 94 V-0)
traffic white RAL 9016
50x50x20mm
IP 65 opt., IP 40



B1804228
MINI-DATA-BOX SF50, high,
with flanges
ASA+PC (UL 94 V-0)
anthracite grey RAL 7016
50x50x20mm
IP 65 opt., IP 40



B1822117
MINI-DATA-BOX E40, flat
ASA+PC (UL 94 V-0)
traffic white RAL 9016
60x40x15mm
IP 65 opt., IP 40



B1822118
MINI-DATA-BOX E40, flat
ASA+PC (UL 94 V-0)
anthracite grey RAL 7016
60x40x15mm
IP 65 opt., IP 40



B1822126
MINI-DATA-BOX EF40, flat, with
flanges
ASA+PC (UL 94 V-0)
traffic white RAL 9016
60x40x15mm
IP 65 opt., IP 40



B1822127
MINI-DATA-BOX EF40, flat, with
flanges
ASA+PC (UL 94 V-0)
traffic white RAL 9016
60x40x15mm
IP 65 opt., IP 40

MINI-DATA-BOX 微型通讯盒



B1822128
MINI-DATA-BOX EF40, flat, with flanges
ASA+PC (UL 94 V-0)
anthracite grey RAL 7016
60x40x15mm
IP 65 opt., IP 40



B1822217
MINI-DATA-BOX E40, high
ASA+PC (UL 94 V-0)
traffic white RAL 9016
60x40x20mm
IP 65 opt., IP 40



B1822218
MINI-DATA-BOX E40, high
ASA+PC (UL 94 V-0)
anthracite grey RAL 7016
60x40x20mm
IP 65 opt., IP 40



B1822226
MINI-DATA-BOX EF40, high, with flanges
ASA+PC (UL 94 V-0)
traffic white RAL 9016
60x40x20mm
IP 65 opt., IP 40



B1822227
MINI-DATA-BOX EF40, high, with flanges
ASA+PC (UL 94 V-0)
traffic white RAL 9016
60x40x20mm
IP 65 opt., IP 40



B1822228
MINI-DATA-BOX EF40, high, with flanges
ASA+PC (UL 94 V-0)
anthracite grey RAL 7016
60x40x20mm
IP 65 opt., IP 40



B1824117
MINI-DATA-BOX E50, flat
ASA+PC (UL 94 V-0)
traffic white RAL 9016
70x50x15mm
IP 65 opt., IP 40



B1824118
MINI-DATA-BOX E50, flat
ASA+PC (UL 94 V-0)
anthracite grey RAL 7016
70x50x15mm
IP 65 opt., IP 40



B1824126
MINI-DATA-BOX EF50, flat, with flanges
ASA+PC (UL 94 V-0)
traffic white RAL 9016
70x50x15mm
IP 65 opt., IP 40



B1824127
MINI-DATA-BOX EF50, flat, with flanges
ASA+PC (UL 94 V-0)
traffic white RAL 9016
70x50x15mm
IP 65 opt., IP 40



B1824128
MINI-DATA-BOX EF50, flat, with flanges
ASA+PC (UL 94 V-0)
anthracite grey RAL 7016
70x50x15mm
IP 65 opt., IP 40



B1824217
MINI-DATA-BOX E50, high
ASA+PC (UL 94 V-0)
traffic white RAL 9016
70x50x20mm
IP 65 opt., IP 40



B1824218
MINI-DATA-BOX E50, high
ASA+PC (UL 94 V-0)
anthracite grey RAL 7016
70x50x20mm
IP 65 opt., IP 40



B1824226
MINI-DATA-BOX EF50, high, with flanges
ASA+PC (UL 94 V-0)
traffic white RAL 9016
70x50x20mm
IP 65 opt., IP 40



B1824227
MINI-DATA-BOX EF50, high, with flanges
ASA+PC (UL 94 V-0)
traffic white RAL 9016
70x50x20mm
IP 65 opt., IP 40



B1824228
MINI-DATA-BOX EF50, high, with flanges
ASA+PC (UL 94 V-0)
anthracite grey RAL 7016
70x50x20mm
IP 65 opt., IP 40

MINI-DATA-BOX 微型通讯盒

“保护等级” 附件



B1902101
Sealing S40/SF40



B1904101
Sealing S50/SF50



B1922101
Sealing E40/EF40



B1924101
Sealing E50/EF50

保留技术更改可能性。© OKW 机盒系统, Buchen/德国。