

ERGO-CASE 弯形盒

弯形电子元件盒

符合人体工程学的 ERGO-CASES 弯形电子元件盒首次实现了舒适佩戴在身体上的功能 - 无论是手臂、胸部或腰部。

- 独特的设计使携带和操作具备优势
- 嵌合佩戴的配件，例如臂带和腰带、带夹、卡夹等等
- 4 种规格，2 种颜色
- 可选带或不带电池：
 - 附加适配 4 个 AA、1 个 9V、2 个 9V (规格 M, L) 电池的电池盒，盒盖卡嵌，如有必要可通过螺钉固定; 规格 S 具备适配 2 个 AAA 电池的固定架
- 带 TPE 中间环的规格 XS 可选无或带窗口用于适配配件，如手链、手带等
- 可选较平或较高的上盖用于安装配置
- 规格 L 可选带半透明 PC 材质或相同主盒材质 ABS 材质的显示面板用于安装更大的具备图形处理能力的显示器
- 端面具备较大的界面终端用表面
- 操作区域凹陷，用于保护膜键盘
- 带保险的隐蔽式墙壁安装; 简单的数据和充电电流传输方式; 接触件作为附件
- 固定柱用于安装电路板和安装组件
- 保护套防冲击和保护表面 (附件，规格 M，较高式)



ERGO-CASE 弯形盒

应用示例

- 医疗和实验室设备的移动式数据采集和数据传输领域
- 休闲和医疗保健领域
- 数字通信技术
- 存储和销售物流领域
- 测量技术
- 控制和调节技术



Datalogger for neuromonitoring



Dynamic pressure measuring between foot and shoe



Fully automatic safety device for the ascent



Ground microphone



Mobile system for treating inner ear ailments



Multiport with integrated datalogger



Patient display for recumbent ergometers



Psoriasis therapy unit



Wearable voice amplifier

按客户要求修改加工

如何体现您的特殊产品？如有需要，我们执行所有必要的修改和精加工，提供组装完毕的机盒。
产品类型用于 Ergo-Case 弯形盒

ERGO-CASE 弯形盒



机械加工



表面涂渡



图文打印



激光打印字体



装饰膜



特殊材质



EMC 保护



制备 / 组装

类型



B7000107
ERGO-CASE S, flat
ABS (UL 94 HB)
off-white RAL 9002
80x96x32mm
IP 54 opt.



B7000109
ERGO-CASE S, flat
ABS (UL 94 HB)
black RAL 9005
80x96x32mm
IP 54 opt.



B7005107
ERGO-CASE S, high
ABS (UL 94 HB)
off-white RAL 9002
80x96x44mm
IP 54 opt.



B7005109
ERGO-CASE S, high
ABS (UL 94 HB)
black RAL 9005
80x96x44mm
IP 54 opt.



B7010107
ERGO-CASE M, flat
ABS (UL 94 HB)
off-white RAL 9002
150x100x40mm
IP 54 opt.



B7010109
ERGO-CASE M, flat
ABS (UL 94 HB)
black RAL 9005
150x100x40mm
IP 54 opt.



B7010207
ERGO-CASE M, flat
ABS (UL 94 HB)
off-white RAL 9002
150x100x40mm
IP 54 opt.



B7010209
ERGO-CASE M, flat
ABS (UL 94 HB)
black RAL 9005
150x100x40mm
IP 54 opt.

ERGO-CASE 弯形盒



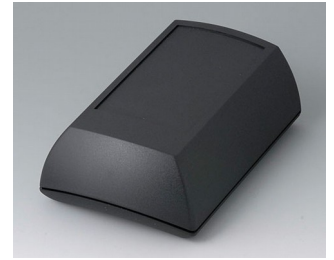
B7015107
ERGO-CASE M, high
ABS (UL 94 HB)
off-white RAL 9002
150x100x55mm
IP 54 opt.



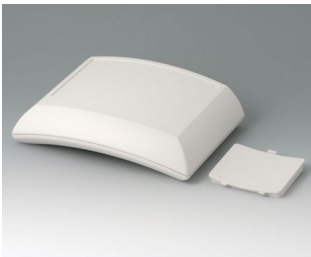
B7015109
ERGO-CASE M, high
ABS (UL 94 HB)
black RAL 9005
150x100x55mm
IP 54 opt.



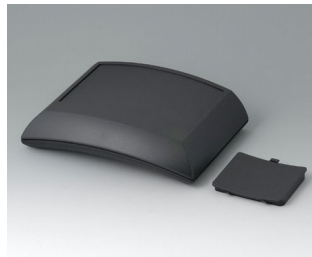
B7015207
ERGO-CASE M, high
ABS (UL 94 HB)
off-white RAL 9002
150x100x55mm
IP 54 opt.



B7015209
ERGO-CASE M, high
ABS (UL 94 HB)
black RAL 9005
150x100x55mm
IP 54 opt.



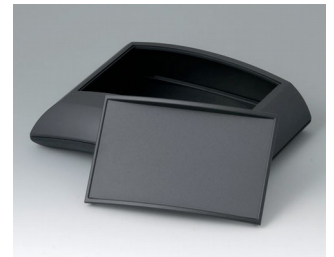
B7020107
ERGO-CASE L, flat
ABS (UL 94 HB)
off-white RAL 9002
150x200x54mm
IP 54 opt.



B7020109
ERGO-CASE L, flat
ABS (UL 94 HB)
black RAL 9005
150x200x54mm
IP 54 opt.



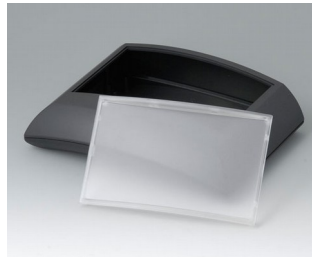
B7020137
ERGO-CASE L, flat
ABS (UL 94 HB)
off-white RAL 9002
150x200x54mm
IP 40



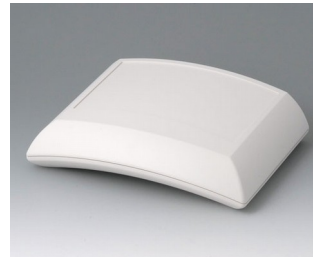
B7020139
ERGO-CASE L, flat
ABS (UL 94 HB)
black RAL 9005
150x200x54mm
IP 40



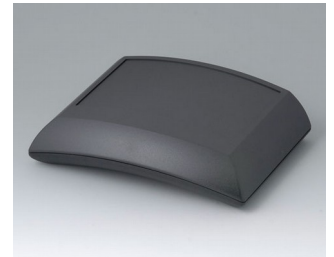
B7020147
ERGO-CASE L, flat
ABS (UL 94 HB)
off-white RAL 9002
150x200x54mm
IP 40



B7020149
ERGO-CASE L, flat
ABS (UL 94 HB)
black RAL 9005
150x200x54mm
IP 40



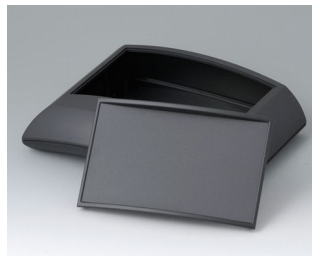
B7020207
ERGO-CASE L, flat
ABS (UL 94 HB)
off-white RAL 9002
150x200x54mm
IP 54 opt.



B7020209
ERGO-CASE L, flat
ABS (UL 94 HB)
black RAL 9005
150x200x54mm
IP 54 opt.



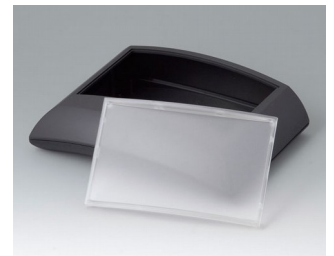
B7020237
ERGO-CASE L, flat
ABS (UL 94 HB)
off-white RAL 9002
150x200x54mm
IP 40



B7020239
ERGO-CASE L, flat
ABS (UL 94 HB)
black RAL 9005
150x200x54mm
IP 40



B7020247
ERGO-CASE L, flat
ABS (UL 94 HB)
off-white RAL 9002
150x200x54mm
IP 40

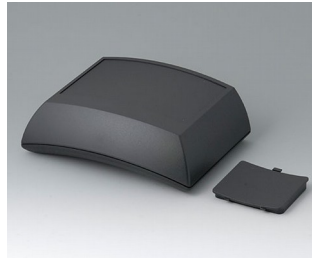


B7020249
ERGO-CASE L, flat
ABS (UL 94 HB)
black RAL 9005
150x200x54mm
IP 40

ERGO-CASE 弯形盒



B7025107
ERGO-CASE L, high
ABS (UL 94 HB)
off-white RAL 9002
150x200x69mm
IP 54 opt.



B7025109
ERGO-CASE L, high
ABS (UL 94 HB)
black RAL 9005
150x200x69mm
IP 54 opt.



B7025137
ERGO-CASE L, high
ABS (UL 94 HB)
off-white RAL 9002
150x200x69mm
IP 40



B7025139
ERGO-CASE L, high
ABS (UL 94 HB)
black RAL 9005
150x200x69mm
IP 40



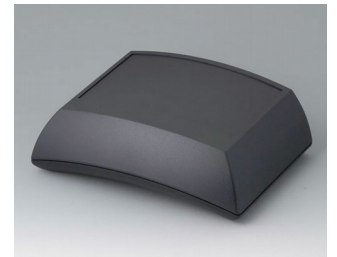
B7025147
ERGO-CASE L, high
ABS (UL 94 HB)
off-white RAL 9002
150x200x69mm
IP 40



B7025149
ERGO-CASE L, high
ABS (UL 94 HB)
black RAL 9005
150x200x69mm
IP 40



B7025207
ERGO-CASE L, high
ABS (UL 94 HB)
off-white RAL 9002
150x200x69mm
IP 54 opt.



B7025209
ERGO-CASE L, high
ABS (UL 94 HB)
black RAL 9005
150x200x69mm
IP 54 opt.



B7025237
ERGO-CASE L, high
ABS (UL 94 HB)
off-white RAL 9002
150x200x69mm
IP 40



B7025239
ERGO-CASE L, high
ABS (UL 94 HB)
black RAL 9005
150x200x69mm
IP 40



B7025247
ERGO-CASE L, high
ABS (UL 94 HB)
off-white RAL 9002
150x200x69mm
IP 40



B7025249
ERGO-CASE L, high
ABS (UL 94 HB)
black RAL 9005
150x200x69mm
IP 40



B7040217
ERGO-CASE XS
ABS (UL 94 HB)
off-white RAL 9002
82x56x24mm
IP 42



B7040219
ERGO-CASE XS
ABS (UL 94 HB)
black RAL 9005
82x56x24mm
IP 42



B7040227
ERGO-CASE XS
ABS (UL 94 HB)
off-white RAL 9002
82x56x24mm
IP 42



B7040229
ERGO-CASE XS
ABS (UL 94 HB)
black RAL 9005
82x56x24mm
IP 42

ERGO-CASE 弯形盒

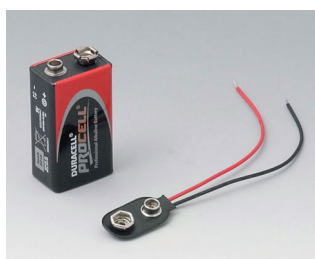


B7040237
ERGO-CASE XS
ABS (UL 94 HB)
off-white RAL 9002
82x56x24mm
IP 42



B7040239
ERGO-CASE XS
ABS (UL 94 HB)
black RAL 9005
82x56x24mm
IP 42

“电池” 配件



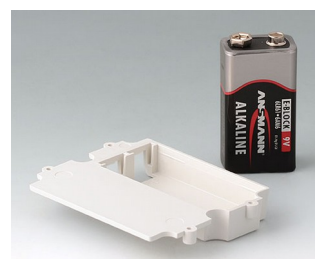
A9160003
Plug-in contact, 1 x 9 V (PP3)



A9161002
Set of battery clips, 2 x 9 V or 4 x AA
Steel
tin-plated



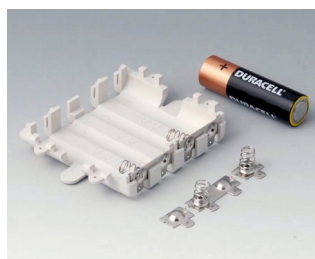
A9174002
Battery compartment, 2 x 9 V
ABS (UL 94 HB)
off-white RAL 9002



A9174003
Battery compartment, 1 x 9 V
ABS (UL 94 HB)
off-white RAL 9002



A9174006
Set of battery clips, 1 x 9 V
Steel
tin-plated



A9345217
Set of battery compartment, 4 x AA
ABS (UL 94 HB)
off-white RAL 9002

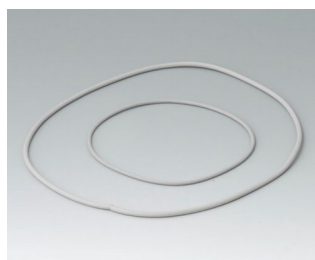


B7100002
Set of battery clips, 2 x AAA

“保护等级” 附件



B7100005
Sealing S



B7110001
Sealing kit M

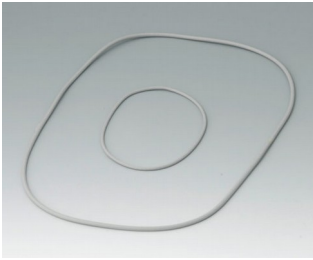


B7110005
Sealing M

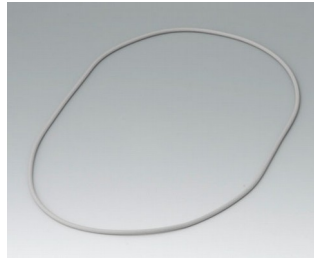


B7115108
Protector M, high TPE volcano

ERGO-CASE 弯形盒

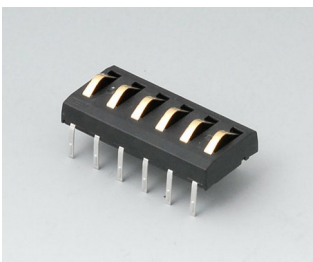


B7120001
Sealing kit L



B7120005
Sealing L

“挂墙支架” 配件



A9178007
Contacts, male
gold-plated



B7110028
Fastening elements L / M / S
PA 6
volcano



B7110048
Wall suspension elements S / M
PA 6
volcano



B7120048
Wall suspension elements L
PA 6
volcano

“手提” 盒附件



A9100001
Ring eyelet
PA 6
volcano



B7110028
Fastening elements L / M / S
PA 6
volcano



B7110107
Belt / pocket clip
PA 6
off-white RAL 9002



B7110109
Belt / pocket clip
PA 6
black RAL 9005



B7110129
Belt strap
black
450x35mm



B7110139
Belt strap
black
1200x30mm



B7110149
Belt strap
black
1500x30mm



B9100033
Wrist strap
black
280mm

ERGO-CASE 弯形盒



B9100063
Carrying strap, textile lanyard
black
860mm



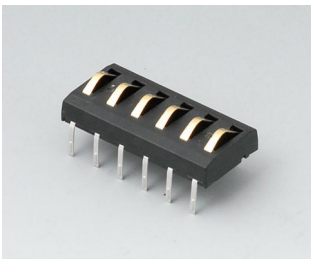
B9100073
Carrying strap, textile lanyard
black
914x16mm

“螺钉” 附件

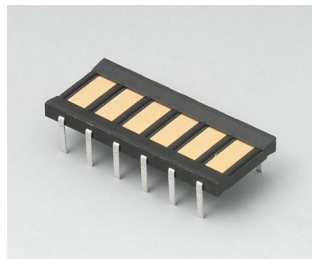


A0305031
Self-tapping screws 2.5 x 6 mm
(PZ1)

附件



A9178007
Contacts, male
gold-plated



A9178008
Contacts, female
gold-plated

保留技术更改可能性。© OKW 机盒系统, Buchen/德国。