

# ART-CASE 艺术型机盒

## 结构形状完美的塑料机盒

“圆形”、“正方形”、“椭圆形”和“矩形”作为基本形状的 ART-CASE 艺术型机盒产品系列为机盒结构设计和功能作用领域设置出行业新标准。

- 独特的机盒设计款式，特别适合在生活和 work 环境的室内使用
- 4 种设计款式，每款 2 种标准颜色
- 可组合使用的选择范围广大的桌式、倾斜式、墙挂式、天花板式或手持式机盒
- 基于“扁平式”或“倾斜式”下盒中还提供以下组合方式：
- 凸状上盒（H）或带凹陷操作面板的扁平上盒（F）
- 普通盒盖或带电池仓盒盖
- 盒座具备 30° 或 55° 的符合人体工程学的倾斜度以简便放置和安装
- 扁平盒座作为天花板或墙壁安装的间距件，包括适配 2 个 AA 电池的支架和应力消除件
- 符合 DIN VDE 0620 第 101 部的欧式插头模块；插头材料为阻燃材料（UL 94 V-0）
- 适配 2 个 AAA 电池的电池仓作为附件
- 防护等级 IP 40
- 固定柱用于固定电路板和元器件



# ART-CASE 艺术型机盒

## 应用示例

专门为室内的电气和电子应用设计，例如，

- 建筑行业 and 家用技术的传输和接收单元
- 医疗技术
- 保健行业
- 计算机外围设备
- 网络技术
- 安全技术等



3D angle measurement of articulation systems on a gravity basis



Access management in care facilities



CO2 sensor traffic light



Multiple analytical resonance system



Radio paging mushroom-type button



RFID Reader for the CTV system



VIVOBASE HOME

## 按客户要求修改加工

如何体现您的特殊产品？如有需要，我们执行所有必要的修改和精加工，提供组装完毕的机盒。产品类型用于 Art-Case 艺术型机盒



机械加工



表面涂渡



图文打印



激光打印字体



装饰膜



特殊材质



EMC 保护



制备 / 组装

# ART-CASE 艺术型机盒

## 类型



**B5010007**  
Bottom and top part R110 F  
ABS (UL 94 HB)  
off-white RAL 9002  
ø110x30mm



**B5010009**  
Bottom and top part R110 F  
ABS (UL 94 HB)  
black RAL 9005  
ø110x30mm



**B5010107**  
Bottom and top part R110 H  
ABS (UL 94 HB)  
off-white RAL 9002  
ø110x38mm



**B5010109**  
Bottom and top part R110 H  
ABS (UL 94 HB)  
black RAL 9005  
ø110x38mm



**B5010207**  
Bottom and top part R110 F  
ABS (UL 94 HB)  
off-white RAL 9002  
ø110x38mm



**B5010209**  
Bottom and top part R110 F  
ABS (UL 94 HB)  
black RAL 9005  
ø110x38mm



**B5010307**  
Bottom and top part R110 H  
ABS (UL 94 HB)  
off-white RAL 9002  
ø110x41mm



**B5010309**  
Bottom and top part R110 H  
ABS (UL 94 HB)  
black RAL 9005  
ø110x41mm



**B5011027**  
ART-CASE R110 F  
PC+ABS (UL 94 V-0)  
off-white RAL 9002  
ø110x30mm  
IP 40



**B5011029**  
ART-CASE R110 F  
PC+ABS (UL 94 V-0)  
black RAL 9005  
ø110x30mm  
IP 40



**B5011127**  
ART-CASE R110 H  
PC+ABS (UL 94 V-0)  
off-white RAL 9002  
ø110x38mm  
IP 40



**B5011129**  
ART-CASE R110 H  
PC+ABS (UL 94 V-0)  
black RAL 9005  
ø110x38mm  
IP 40



**B5011227**  
ART-CASE R110 F  
PC+ABS (UL 94 V-0)  
off-white RAL 9002  
ø110x38mm  
IP 40



**B5011229**  
ART-CASE R110 F  
PC+ABS (UL 94 V-0)  
black RAL 9005  
ø110x38mm  
IP 40



**B5011327**  
ART-CASE R110 H  
PC+ABS (UL 94 V-0)  
off-white RAL 9002  
ø110x41mm  
IP 40



**B5011329**  
ART-CASE R110 H  
PC+ABS (UL 94 V-0)  
black RAL 9005  
ø110x41mm  
IP 40

# ART-CASE 艺术型机盒



**B5012207**  
Bottom and top part S110F  
ABS (UL 94 HB)  
off-white RAL 9002  
110x110x38mm



**B5012209**  
Bottom and top part S110 F  
ABS (UL 94 HB)  
black RAL 9005  
110x110x38mm



**B5013227**  
ART-CASE S110 F  
PC+ABS (UL 94 V-0)  
off-white RAL 9002  
110x110x38mm  
IP 40



**B5013229**  
ART-CASE S110 F  
PC+ABS (UL 94 V-0)  
black RAL 9005  
110x110x38mm  
IP 40



**B5015007**  
Bottom and top part O160 F  
ABS (UL 94 HB)  
off-white RAL 9002  
160x110x30mm



**B5015009**  
Bottom and top part O160 F  
ABS (UL 94 HB)  
black RAL 9005  
160x110x30mm



**B5015107**  
Bottom and top part O160 H  
ABS (UL 94 HB)  
off-white RAL 9002  
160x110x38mm



**B5015109**  
Bottom and top part O160 H  
ABS (UL 94 HB)  
black RAL 9005  
160x110x38mm



**B5015207**  
Bottom and top part O160 F  
ABS (UL 94 HB)  
off-white RAL 9002  
160x110x38mm



**B5015209**  
Bottom and top part O160 F  
ABS (UL 94 HB)  
black RAL 9005  
160x110x38mm



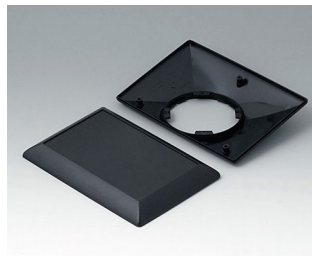
**B5015307**  
Bottom and top part O160 H  
ABS (UL 94 HB)  
off-white RAL 9002  
160x110x41mm



**B5015309**  
Bottom and top part O160 H  
ABS (UL 94 HB)  
black RAL 9005  
160x110x41mm



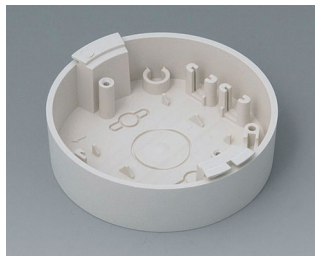
**B5017207**  
Bottom and top part E160 F  
ABS (UL 94 HB)  
off-white RAL 9002  
160x110x38mm



**B5017209**  
Bottom and top part E160 F  
ABS (UL 94 HB)  
black RAL 9005  
160x110x38mm

# ART-CASE 艺术型机盒

系统组件使产品完整



**B5011117**  
Base  
ABS (UL 94 HB)  
off-white RAL 9002



**B5011119**  
Base  
ABS (UL 94 HB)  
black RAL 9005



**B5011217**  
Base 30°  
ABS (UL 94 HB)  
off-white RAL 9002



**B5011219**  
Base 30°  
ABS (UL 94 HB)  
black RAL 9005



**B5011317**  
Base 55°  
ABS (UL 94 HB)  
off-white RAL 9002



**B5011319**  
Base 55°  
ABS (UL 94 HB)  
black RAL 9005



**B5011847**  
Lid  
ABS (UL 94 HB)  
off-white RAL 9002



**B5011849**  
Lid  
ABS (UL 94 HB)  
black RAL 9005



**B5011857**  
Battery compartment lid  
ABS (UL 94 HB)  
off-white RAL 9002

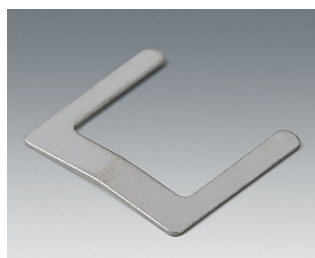


**B5011859**  
Battery compartment lid  
ABS (UL 94 HB)  
black RAL 9005

## “电池” 配件



**A9166001**  
Set of battery clips, 2 x AAA  
Steel  
tin-plated



**A9166002**  
Battery contact, 2 x AAA  
Steel  
tin-plated



**A9166003**  
Battery holder, 2 x AAA  
PA 6 (UL 94 HB)  
black RAL 9005



**A9190002**  
Set of battery clips,  
2xN/2xAA/2xAAA  
Steel  
tin-plated

# ART-CASE 艺术型机盒



**B5111107**  
Battery compartment, 2 x AAA  
ABS (UL 94 HB)  
off-white RAL 9002



**B5111109**  
Battery compartment, 2 x AAA  
ABS (UL 94 HB)  
black RAL 9005

## “保护等级” 附件



**A9199005**  
Strain relief  
PA 6  
volcano



**B5111707**  
Anti-rotation device  
ABS (UL 94 HB)  
off-white RAL 9002

## “挂墙支架” 配件



**B5111307**  
Wall mounting set  
ABS (UL 94 HB)  
off-white RAL 9002



**B5111309**  
Wall mounting set  
ABS (UL 94 HB)  
black RAL 9005

## “螺钉” 附件



**B5111201**  
Set of screws

# ART-CASE 艺术型机盒

## 附件



A9207150  
Anti-slide feet 6.5 x 2 mm  
transparent

保留技术更改可能性。© OKW 机盒系统, Buchen/德国。