

SOFT-CASE 园边机盒

宽幅手持盒

SOFT-CASE 园边机盒之所以征服用户，是因为其设计和款式都符合当前的现代需求。

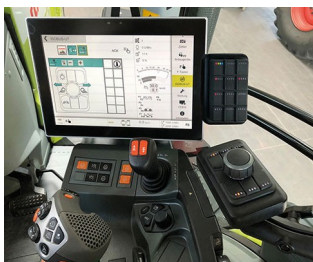
- 圆滑柔软及轻巧的格式使触感舒适
- 独特的“宽幅”格式，使其能够利于客户要求在小空间中容纳较大的显示器，这既方便了指示器的读值，也简便了操作
- 通过纵向侧慷慨的接口面提供更多的灵活性
- 可作为通用盒用于手持盒，桌式盒和墙挂盒
- 4 种规格，可选增加高度的中间环并具备多种款式：颜色与壳体相同的 ABS 材质、或镀锌材质、TPE 材质
- 在与 TPE 中间环结合使用时，防护等级 IP 54 可选（此型无电池隔室，材质为 ABS 或 PMMA）
- 2 种材质：ABS (UL 94 HB)，或透红外线 PMMA (UL 94 HB)
- 无或带电池仓适配 2 个 AAA、2 个 AA、4 个 AA 或 1 个 9 V 电池; 电池盒盖卡扣式，如有必要，用螺钉固定保险
- 操作区域凹陷以保护膜键盘和装饰膜
- 多用途卡夹作为卡扣夹和 / 或墙壁支架（附件）
- 倾斜座架以方便操作
- 固定柱用于固定电路板和元器件



SOFT-CASE 园边机盒

应用示例

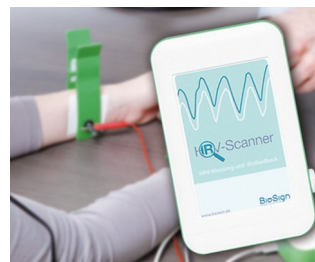
- 各种有线和无线遥控技术
- 测量和控制技术
- 数字控制技术
- 医疗和实验室设备
- 配套设施与界面设备
- 通信技术
- IoT/IIoT



Digital joystick for ISO bus machines



Geiger counter with logging function



HRV scanner for analysing the autonomic nervous system



Module for smart mobility applications



Multimedia audioguide for museums



Real-time localisation in the healthcare sector



Remote control unit for AutoSat satellite receiver



RFID Reader



RIDEwatcher Multimeter for ride profiles



Sensor for measuring carbon dioxide concentration

按客户要求修改加工

如何体现您的特殊产品？如有需要，我们执行所有必要的修改和精加工，提供组装完毕的机盒。
产品类型用于 Soft-Case 园边机盒

SOFT-CASE 园边机盒



机械加工



表面涂渡



图文打印



激光打印字体



装饰膜



特殊材质



EMC 保护



制备 / 组装

类型



A9050107
SOFT-CASE S
ABS (UL 94 HB)
off-white RAL 9002
51x82x14mm
IP 54 opt., IP 40



A9050108
SOFT-CASE S
ABS (UL 94 HB)
lava
51x82x14mm
IP 54 opt., IP 40



A9050209
SOFT-CASE S
PMMA (IR) (UL 94 HB)
black RAL 9005
51x82x14mm
IP 54 opt., IP 40



A9051107
SOFT-CASE M
ABS (UL 94 HB)
off-white RAL 9002
65x105x19mm
IP 54 opt., IP 40



A9051108
SOFT-CASE M
ABS (UL 94 HB)
lava
65x105x19mm
IP 54 opt., IP 40



A9051117
SOFT-CASE M
ABS (UL 94 HB)
off-white RAL 9002
65x105x19mm
IP 40



A9051118
SOFT-CASE M
ABS (UL 94 HB)
lava
65x105x19mm
IP 40



A9051209
SOFT-CASE M
PMMA (IR) (UL 94 HB)
black RAL 9005
65x105x19mm
IP 54 opt., IP 40

SOFT-CASE 园边机盒



A9051219
SOFT-CASE M
PMMA (IR) (UL 94 HB)
black RAL 9005
65x105x19mm
IP 40



A9052107
SOFT-CASE L
ABS (UL 94 HB)
off-white RAL 9002
73x117x24mm
IP 54 opt., IP 40



A9052108
SOFT-CASE L
ABS (UL 94 HB)
lava
73x117x24mm
IP 54 opt., IP 40



A9052117
SOFT-CASE L
ABS (UL 94 HB)
off-white RAL 9002
73x117x24mm
IP 40



A9052118
SOFT-CASE L
ABS (UL 94 HB)
lava
73x117x24mm
IP 40



A9052127
SOFT-CASE L
ABS (UL 94 HB)
off-white RAL 9002
73x117x24mm
IP 40



A9052128
SOFT-CASE L
ABS (UL 94 HB)
lava
73x117x24mm
IP 40



A9052209
SOFT-CASE L
PMMA (IR) (UL 94 HB)
black RAL 9005
73x117x24mm
IP 54 opt., IP 40



A9052219
SOFT-CASE L
PMMA (IR) (UL 94 HB)
black RAL 9005
73x117x24mm
IP 40



A9052229
SOFT-CASE L
PMMA (IR) (UL 94 HB)
black RAL 9005
73x117x24mm
IP 40



A9053107
SOFT-CASE XL
ABS (UL 94 HB)
off-white RAL 9002
92x150x28mm
IP 40



A9053108
SOFT-CASE XL
ABS (UL 94 HB)
lava
92x150x28mm
IP 40



A9053117
SOFT-CASE XL
ABS (UL 94 HB)
off-white RAL 9002
92x150x28mm
IP 40



A9053118
SOFT-CASE XL
ABS (UL 94 HB)
lava
92x150x28mm
IP 40



A9053209
SOFT-CASE XL
PMMA (IR) (UL 94 HB)
black RAL 9005
92x150x28mm
IP 40



A9053219
SOFT-CASE XL
PMMA (IR) (UL 94 HB)
black RAL 9005
92x150x28mm
IP 40

SOFT-CASE 园边机盒

“中间环” 配件



A9150011
Intermediate ring S
ABS (UL 94 HB)
matt chromed
54x85x12mm



A9150017
Intermediate ring S
ABS (UL 94 HB)
off-white RAL 9002
54x85x12mm



A9150018
Intermediate ring S
ABS (UL 94 HB)
lava
54x85x12mm



A9150118
Intermediate protection ring S
SEBS (TPE)
volcano
54x85x12mm



A9150219
Intermediate ring S
PMMA (IR) (UL 94 HB)
black RAL 9005
54x85x12mm



A9151011
Intermediate ring M
ABS (UL 94 HB)
matt chromed
68x108x16mm



A9151017
Intermediate ring M
ABS (UL 94 HB)
off-white RAL 9002
68x108x16mm



A9151018
Intermediate ring M
ABS (UL 94 HB)
lava
68x108x16mm



A9151118
Intermediate protection ring M
SEBS (TPE)
volcano
68x108x16mm



A9151219
Intermediate ring M
PMMA (IR) (UL 94 HB)
black RAL 9005
68x108x16mm



A9152011
Intermediate ring L
ABS (UL 94 HB)
matt chromed
76x120x21mm



A9152017
Intermediate ring L
ABS (UL 94 HB)
off-white RAL 9002
76x120x21mm



A9152018
Intermediate ring L
ABS (UL 94 HB)
lava
76x120x21mm



A9152118
Intermediate protection ring L
SEBS (TPE)
volcano
76x120x21mm



A9152219
Intermediate ring L
PMMA (IR) (UL 94 HB)
black RAL 9005
76x120x21mm



A9153011
Intermediate ring XL
ABS (UL 94 HB)
matt chromed
96x154x26mm

SOFT-CASE 园边机盒



A9153017
Intermediate ring XL
ABS (UL 94 HB)
off-white RAL 9002
96x154x26mm



A9153018
Intermediate ring XL
ABS (UL 94 HB)
lava
96x154x26mm



A9153118
Intermediate ring XL
SEBS (TPE)
volcano
96x154x26mm



A9153219
Intermediate ring XL
PMMA (IR) (UL 94 HB)
black RAL 9005
96x154x26mm

“电池” 配件



A9151010
Set of battery clips, 2 x AAA
Steel
nickel-plated

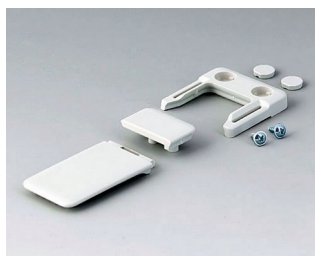


A9152010
Set of battery clips, 2/4 x AA
Steel
nickel-plated



A9174006
Set of battery clips, 1 x 9 V
Steel
tin-plated

“挂墙支架” 配件



A9152047
Combi-Clip
ABS (UL 94 HB)
off-white RAL 9002
45x27mm



A9152048
Combi-Clip
ABS (UL 94 HB)
lava
45x27mm



A9152049
Combi-Clip
ABS (UL 94 HB)
black RAL 9005
45x27mm

“手提” 盒附件



A9100001
Ring eyelet
PA 6
volcano



A9100002
Ring eyelet
PA 6
volcano



A9152047
Combi-Clip
ABS (UL 94 HB)
off-white RAL 9002
45x27mm



A9152048
Combi-Clip
ABS (UL 94 HB)
lava
45x27mm

SOFT-CASE 园边机盒



A9152049
Combi-Clip
ABS (UL 94 HB)
black RAL 9005
45x27mm



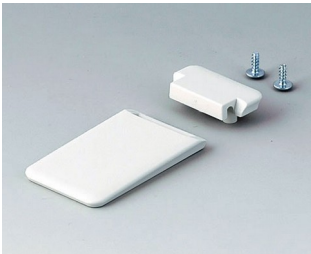
B9106128
Strap eyelet
ABS (UL 94 HB)
lava

“螺钉” 附件



A0304031
Self-tapping screws 2.2 x 5 mm
(PZ1)

附件



A9152057
Tilt foot bar
ABS (UL 94 HB)
off-white RAL 9002



A9152058
Tilt foot bar
ABS (UL 94 HB)
lava



A9152059
Tilt foot bar
ABS (UL 94 HB)
black RAL 9005

保留技术更改可能性。 © OKW 机盒系统, Buchen/德国。