

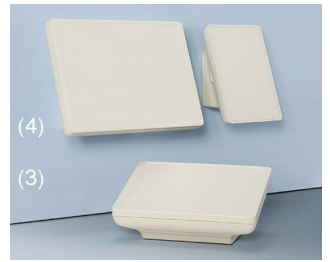
# INTERFACE-TERMINAL 界面终端盒

## 多功能电子元件盒

创新的 INTERFACE-TERMINAL 界面终端盒为现代化人机界面提供了便利。

- 美观的设计
- 用户可自己决定是否想将设备指定为移动式或 / 或固定式使用
- 充足的空间用于安装电子元件、图形显示屏或触摸屏 (S: 6,4"/16 cm, M: 8,4"/21 cm, L: 10,4"/26 cm)
- 可选择厚度较低或者厚度较高的底盒用于独特配置、界面接口、电线进出口连接等的安装
- 前面板形式可选择: ABS 材质的上盖和前面板、铝制前面板、保护触摸屏的玻璃面板  
根据要求可安装平板电脑
- 防护等级 IP 54: 如使用密封圈 (作为附件)
- 固定柱用于安装电路板和元器件
- 可自行组合的机盒安装系列包含:
  - 移动式 (1)  
可选择无或带外装电池盒 (适配 5 个 AA 电池), 包括防电极误接和防扭保护、操作舒适便利的结构、具有扁平样式的手柄、背面的指槽用于安全的持握
  - 带有充电座或扁平墙面支座的机盒 (2)  
机盒卡接于插座或扁平挂墙支座上; 简便的数据传输和充电接触件作为附件; 机盒可根据纵向或者横向取向要求进行放置; 底座为电子设备提供充足的空间
  - 倾斜机盒, 螺栓固定式 (3)  
操作面提供符合人体工程学的 20 度倾斜; 可纵向或者横向进行安装; 螺栓连接位于非可视面; 底座为接插件、电子设备、布线提供充足的空间。橡胶垫脚为台式机盒提供安全稳固的放置
  - 倾斜卡插台式机盒或墙挂式机盒, 带旋转插锁 (4)  
移动部件和固定部件之间的连接方式特别独特; 通过事先设定的卡夹式位于机盒和底座的接口可以让安装变得非常简便; 底座为接插件、电子设备安装以及布线提供充足的空间, 并提供良好的组装性; 底座可直接安装在墙上; 可移动组件可纵向或者横向进行安装
  - 嵌入式机盒 (5)  
对于有特殊要求的建筑物或历史建筑物, 机盒可和谐地安装在墙壁内或与表面安装板形成一体; 更进一步也可将机盒安装在机器或者设备中; 内置安装套件使安装简便

# INTERFACE-TERMINAL 界面终端盒



# INTERFACE-TERMINAL 界面终端盒

## 应用示例

独特的应用广泛的类型: 移动式 - 倾斜台式 - 壁挂式 - 嵌入式

- 外围设备和界面设备
- 办公室
- 通信技术
- 安全技术
- 生物识别
- 医药和实验室技术
- 健康
- 卫生保健
- IoT/IIoT
- 自动化
- 测量/调节/控制



Device for bioelectrical patient analysis



Self-monitoring emergency call system



Smart Home Console



Terminal for personnel time recording



Wireless data logger

## 按客户要求修改加工

如何体现您的特殊产品？如有需要，我们执行所有必要的修改和精加工，提供组装完毕的机盒。  
产品类型用于 Interface-Terminal 界面终端盒

# INTERFACE-TERMINAL 界面终端盒



机械加工



表面涂渡



图文打印



激光打印字体



装饰膜



特殊材质

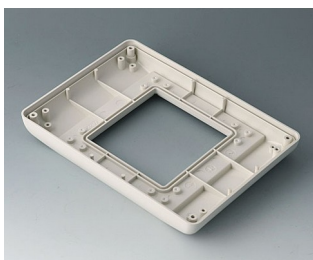


EMC 保护

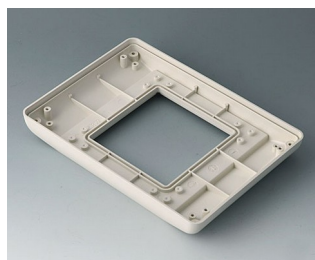


制备 / 组装

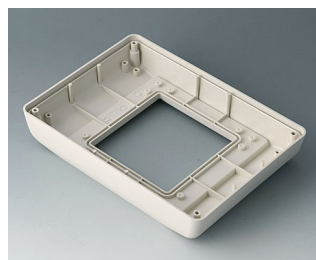
## 类型



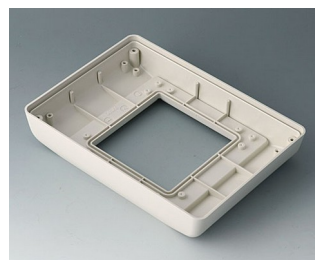
**B4042707**  
Bottom part S flat, version I  
ABS (UL 94 HB)  
off-white RAL 9002  
190x135x24.5mm  
IP 54 opt.



**B4042717**  
Bottom part S flat, version II  
ABS (UL 94 HB)  
off-white RAL 9002  
190x135x24.5mm  
IP 54 opt.



**B4042757**  
Bottom part S high, version I  
ABS (UL 94 HB)  
off-white RAL 9002  
190x135x34.5mm  
IP 54 opt.



**B4042767**  
Bottom part S high, version II  
ABS (UL 94 HB)  
off-white RAL 9002  
190x135x34.5mm  
IP 54 opt.



**B4044707**  
Bottom part M flat, version I  
ABS (UL 94 HB)  
off-white RAL 9002  
225x165x25.5mm  
IP 54 opt.



**B4044717**  
Bottom part M flat, version II  
ABS (UL 94 HB)  
off-white RAL 9002  
225x165x25.5mm  
IP 54 opt.



**B4044757**  
Bottom part M high, version I  
ABS (UL 94 HB)  
off-white RAL 9002  
225x165x35.5mm  
IP 54 opt.



**B4044767**  
Bottom part M high, version II  
ABS (UL 94 HB)  
off-white RAL 9002  
225x165x35.5mm  
IP 54 opt.

# INTERFACE-TERMINAL 界面终端盒



**B4046707**  
Bottom part L flat, version I  
ABS (UL 94 HB)  
off-white RAL 9002  
275x195x26.5mm  
IP 54 opt.



**B4046717**  
Bottom part L flat, version II  
ABS (UL 94 HB)  
off-white RAL 9002  
275x195x26.5mm  
IP 54 opt.



**B4046757**  
Bottom part L high, version I  
ABS (UL 94 HB)  
off-white RAL 9002  
275x195x36.5mm  
IP 54 opt.

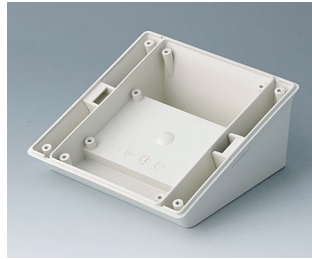


**B4046767**  
Bottom part L high, version II  
ABS (UL 94 HB)  
off-white RAL 9002  
275x195x36.5mm  
IP 54 opt.

## 系统组件使产品完整



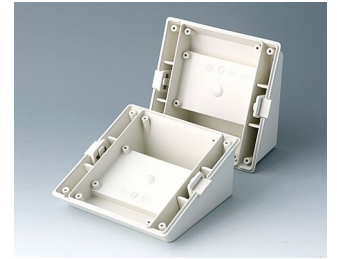
**B4042407**  
Cover S  
ABS (UL 94 HB)  
off-white RAL 9002  
190x135x14mm



**B4042827**  
Base S - desk-top -  
ABS (UL 94 HB)  
off-white RAL 9002  
123x123x53mm



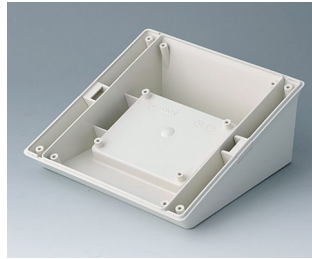
**B4042837**  
Base S - charging station, case  
deposit mobile  
ABS (UL 94 HB)  
off-white RAL 9002  
123x123x60mm



**B4042847**  
Base S - desk-top/wall -  
ABS (UL 94 HB)  
off-white RAL 9002  
123x123x53mm



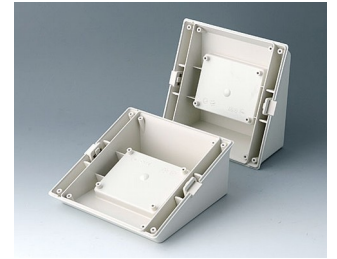
**B4044407**  
Cover M  
ABS (UL 94 HB)  
off-white RAL 9002  
225x165x14mm



**B4044827**  
Base M - desk-top -  
ABS (UL 94 HB)  
off-white RAL 9002  
153x153x63mm



**B4044837**  
Base M - charging station, case  
deposit mobile  
ABS (UL 94 HB)  
off-white RAL 9002  
153x153x70mm



**B4044847**  
Base M - desk-top/wall -  
ABS (UL 94 HB)  
off-white RAL 9002  
153x153x63mm



**B4046407**  
Cover L  
ABS (UL 94 HB)  
off-white RAL 9002  
275x195x25.5mm



**B4046427**  
Cover L, for iPad Air  
ABS (UL 94 HB)  
off-white RAL 9002  
275x195x25.5mm



**B4046827**  
Base L - desk-top -  
ABS (UL 94 HB)  
off-white RAL 9002  
183x183x73mm



**B4046837**  
Base L - charging station, case  
deposit mobile  
ABS (UL 94 HB)  
off-white RAL 9002  
183x183x80mm

# INTERFACE-TERMINAL 界面终端盒



**B4046847**  
Base L - desk-top/wall -  
ABS (UL 94 HB)  
off-white RAL 9002  
183x183x73mm



**B4142047**  
Battery compartment and lid S, 5  
x AA  
ABS (UL 94 HB)  
off-white RAL 9002



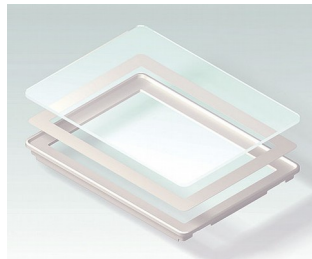
**B4142106**  
Front panel S  
Aluminium  
matt anodised  
186.5x131.5x2mm



**B4142107**  
Front panel S  
ABS (UL 94 HB)  
off-white RAL 9002  
190.6x135.6x14.5mm



**B4142167**  
Bottom panel with handle recess  
S  
ABS (UL 94 HB)  
off-white RAL 9002



**B4142203**  
Glass panel S  
Glass  
clear  
190.6x135.6x16.7mm



**B4142247**  
Wall suspension element S  
ABS (UL 94 HB)  
off-white RAL 9002



**B4142257**  
Bottom panel with snap-in strips  
S  
ABS (UL 94 HB)  
off-white RAL 9002



**B4142587**  
Installation assembly kit S, flat  
ABS (UL 94 HB)  
off-white RAL 9002  
234x185mm



**B4142597**  
Installation assembly kit S, high  
ABS (UL 94 HB)  
off-white RAL 9002  
234x185mm



**B4144047**  
Battery compartment and lid M,  
5 x AA  
ABS (UL 94 HB)  
off-white RAL 9002



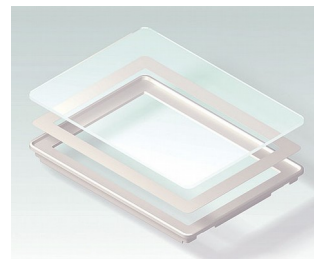
**B4144106**  
Front panel M  
Aluminium  
matt anodised  
221.5x161.5x2mm



**B4144107**  
Front panel M  
ABS (UL 94 HB)  
off-white RAL 9002  
225.6x165.6x15.5mm



**B4144167**  
Bottom panel with handle recess  
M  
ABS (UL 94 HB)  
off-white RAL 9002



**B4144203**  
Glass panel M  
Glass  
clear  
225.6x165.6x17.7mm

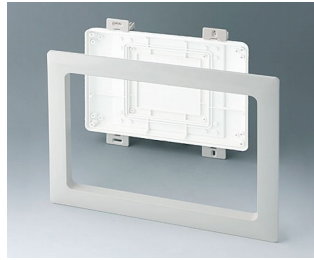


**B4144247**  
Wall suspension element M  
ABS (UL 94 HB)  
off-white RAL 9002

# INTERFACE-TERMINAL 界面终端盒



**B4144257**  
Bottom panel with snap-in strips  
M  
ABS (UL 94 HB)  
off-white RAL 9002



**B4144587**  
Installation assembly kit M, flat  
ABS (UL 94 HB)  
off-white RAL 9002  
272x218mm



**B4144597**  
Installation assembly kit M, high  
ABS (UL 94 HB)  
off-white RAL 9002  
272x218mm



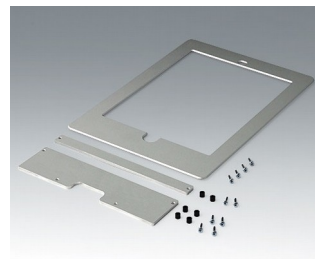
**B4146047**  
Battery compartment and lid L, 5  
x AA  
ABS (UL 94 HB)  
off-white RAL 9002



**B4146106**  
Front panel L  
Aluminium  
matt anodised  
271.5x191.5x2mm



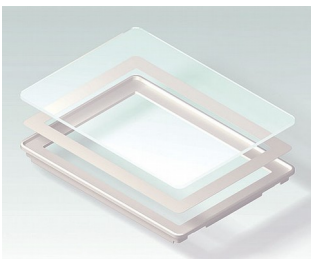
**B4146107**  
Front panel L  
ABS (UL 94 HB)  
off-white RAL 9002  
275.6x195.6x15.5mm



**B4146126**  
Front panel L, for iPad Air  
Aluminium  
matt anodised  
275.4x195.4x4mm



**B4146167**  
Bottom panel with handle recess  
L  
ABS (UL 94 HB)  
off-white RAL 9002



**B4146203**  
Glass panel L  
Glass  
clear  
275.6x195.6x17.7mm



**B4146247**  
Wall suspension element L  
ABS (UL 94 HB)  
off-white RAL 9002



**B4146257**  
Bottom panel with snap-in strips  
L  
ABS (UL 94 HB)  
off-white RAL 9002



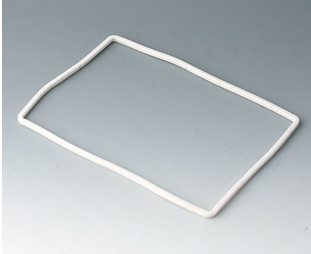
**B4146587**  
Installation assembly kit L, flat  
ABS (UL 94 HB)  
off-white RAL 9002  
325x251mm



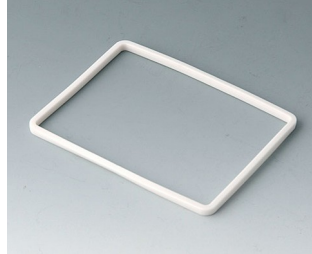
**B4146597**  
Installation assembly kit L, high  
ABS (UL 94 HB)  
off-white RAL 9002  
325x251mm

# INTERFACE-TERMINAL 界面终端盒

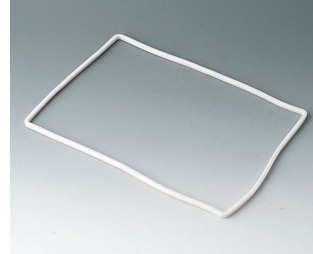
## “保护等级” 附件



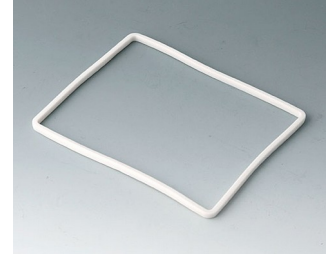
**B4142005**  
Sealing S (bottom part - front design)  
SEBS (TPE)



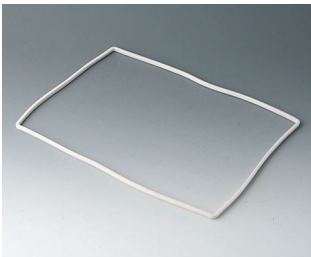
**B4142006**  
Sealing S (bottom part - base/bot. panel/bat. comp...)  
SEBS (TPE)



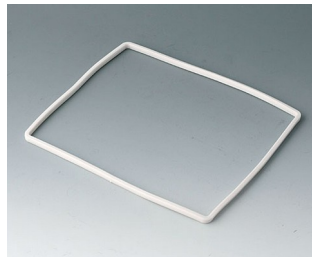
**B4144005**  
Sealing M (bottom part - front design)  
SEBS (TPE)



**B4144006**  
Sealing M (bottom part - base/bot. panel/bat. comp...)  
SEBS (TPE)

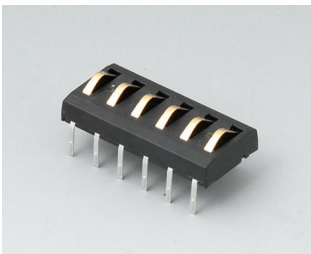


**B4146005**  
Sealing L (bottom part - front design)  
SEBS (TPE)

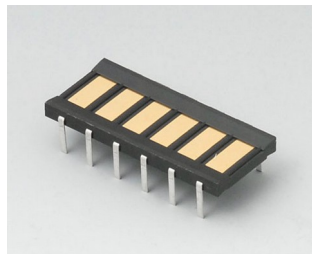


**B4146006**  
Sealing L (bottom part - base/bot. panel/bat. comp...)  
SEBS (TPE)

## 附件



**A9178007**  
Contacts, male  
gold-plated



**A9178008**  
Contacts, female  
gold-plated

保留技术更改可能性。 © OKW 机盒系统, Buchen/德国。