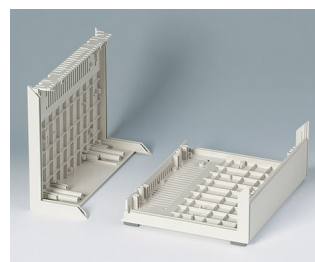
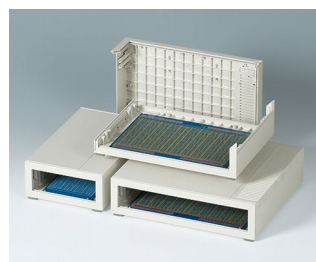
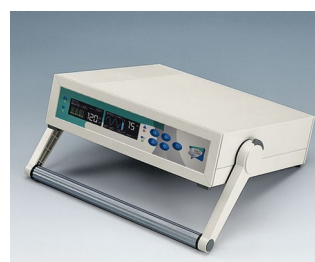


MEDITEC 医疗器械盒

大型塑料机盒

令人信服的设计款式表现了 MEDITEC 医疗器械盒系列的特征，是为提供高精功能组件的豪华版的大型机盒系统的基础。

- 优雅并实用的设计款式
- 适合用于桌面、墙壁和移动式的多种应用
- 通过内设格栅状肋条达到高稳定性
- 简易装配的壳体设计
- 4 种规格，符合欧洲卡格式，单卡、双卡和特长型
- 2 个标准高度，如需要其它高度，可以使用连接器将两个中间壳体连接达到
- 符合人体工程学的倾斜操作面；当使用中间壳体时，侧板条能最佳地封闭接口
- 塑料前/后板具有相同的表面质量，可进行灵活加工
- 无或带通风槽的侧板可推入；与壳体相同颜色或海蓝色可选，如有需要也可选特殊颜色
- 机盒稳固脚包含在供货范围内
- 灵活挂墙支架带固定片
- 可带提手型；利于路途的携带，如果需要，调节机构允许 30° 倾斜，使用户在现场有一个有利的设置角度
- 固定柱用于固定电路板和元器件



MEDITEC 医疗器械盒

应用示例

- 实验室和医疗技术领域
- 保健领域
- 工艺工程控制
- 测量和控制技术
- 计算机外围设备
- 调制解调器和界面接口
- 通信和网络技术
- 数据收集



amicOx pulse oximeter



Dry milling unit for foot care



NeurOne Tesla EEG System



Pneumatic Lithotripter System

按客户要求修改加工

如何体现您的特殊产品？如有需要，我们执行所有必要的修改和精加工，提供组装完毕的机盒。
产品类型用于 Meditec 医疗器械盒



机械加工



表面涂渡



图文打印



激光打印字体



特殊材质



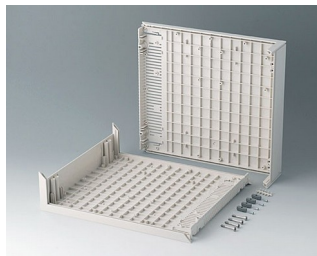
EMC 保护



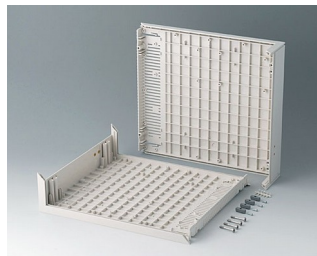
制备 / 组装

MEDITEC 医疗器械盒

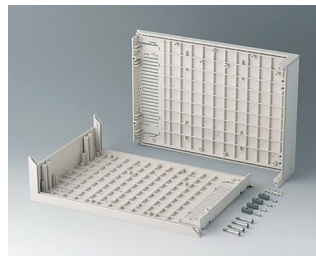
类型



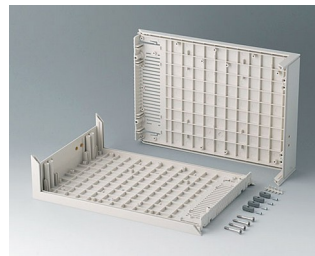
B2010007
L-shells D 220, without holes
ABS (UL 94 HB)
off-white RAL 9002
290x260x74mm



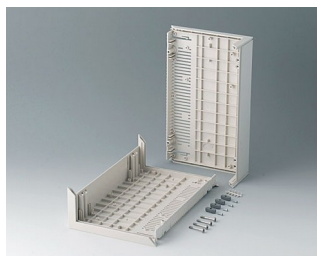
B2010107
L-shells D 220, with holes for
handle
ABS (UL 94 HB)
off-white RAL 9002
290x260x74mm



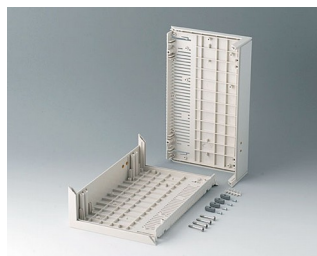
B2011007
L-shells D 160, without holes
ABS (UL 94 HB)
off-white RAL 9002
290x200x74mm



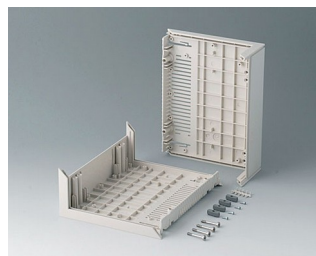
B2011107
L-shells D 160, with holes for
handle
ABS (UL 94 HB)
off-white RAL 9002
290x200x74mm



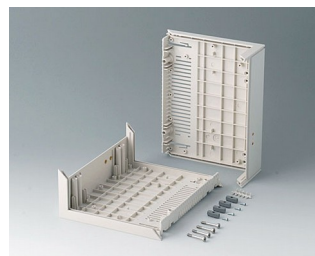
B2012007
L-shells E 220, without holes
ABS (UL 94 HB)
off-white RAL 9002
160x260x74mm



B2012107
L-shells E 220, with holes for
handle
ABS (UL 94 HB)
off-white RAL 9002
160x260x74mm



B2013007
L-shells E 160, without holes
ABS (UL 94 HB)
off-white RAL 9002
160x200x74mm



B2013107
L-shells E 160, with holes for
handle
ABS (UL 94 HB)
off-white RAL 9002
160x200x74mm



B2210005
MEDITEC D 220, without handle
bar
ABS (UL 94 HB)
off-white RAL 9002
290x260x74mm
IP 40



B2210007
MEDITEC D 220, without handle
bar
ABS (UL 94 HB)
off-white RAL 9002
290x260x74mm
IP 40



B2210015
MEDITEC D 220, without handle
bar
ABS (UL 94 HB)
off-white RAL 9002
290x260x74mm
IP 40



B2210017
MEDITEC D 220, without handle
bar
ABS (UL 94 HB)
off-white RAL 9002
290x260x74mm
IP 40

MEDITEC 医疗器械盒



B2210105
MEDITEC D 220, with handle
bar
ABS (UL 94 HB)
off-white RAL 9002
290x260x74mm
IP 40



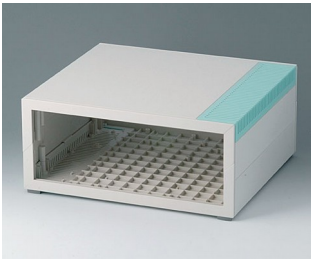
B2210107
MEDITEC D 220, with handle
bar
ABS (UL 94 HB)
off-white RAL 9002
290x260x74mm
IP 40



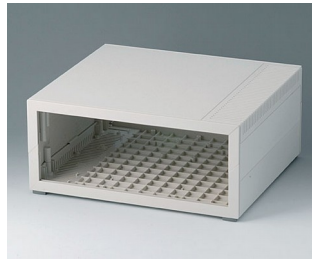
B2210115
MEDITEC D 220, with handle
bar
ABS (UL 94 HB)
off-white RAL 9002
290x260x74mm
IP 40



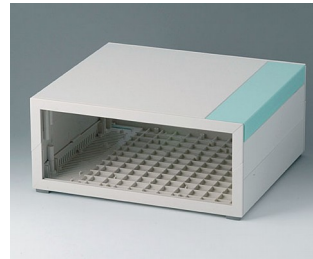
B2210117
MEDITEC D 220, with handle
bar
ABS (UL 94 HB)
off-white RAL 9002
290x260x74mm
IP 40



B2210205
MEDITEC D 220, without handle
bar
ABS (UL 94 HB)
off-white RAL 9002
290x260x124mm
IP 40



B2210207
MEDITEC D 220, without handle
bar
ABS (UL 94 HB)
off-white RAL 9002
290x260x124mm
IP 40



B2210215
MEDITEC D 220, without handle
bar
ABS (UL 94 HB)
off-white RAL 9002
290x260x124mm
IP 40



B2210217
MEDITEC D 220, without handle
bar
ABS (UL 94 HB)
off-white RAL 9002
290x260x124mm
IP 40



B2210305
MEDITEC D 220, with handle
bar
ABS (UL 94 HB)
off-white RAL 9002
290x260x124mm
IP 40



B2210307
MEDITEC D 220, with handle
bar
ABS (UL 94 HB)
off-white RAL 9002
290x260x124mm
IP 40



B2210315
MEDITEC D 220, with handle
bar
ABS (UL 94 HB)
off-white RAL 9002
290x260x124mm
IP 40



B2210317
MEDITEC D 220, with handle
bar
ABS (UL 94 HB)
off-white RAL 9002
290x260x124mm
IP 40



B2211005
MEDITEC D 160, without handle
bar
ABS (UL 94 HB)
off-white RAL 9002
290x200x74mm
IP 40



B2211007
MEDITEC D 160, without handle
bar
ABS (UL 94 HB)
off-white RAL 9002
290x200x74mm
IP 40



B2211015
MEDITEC D 160, without handle
bar
ABS (UL 94 HB)
off-white RAL 9002
290x200x74mm
IP 40



B2211017
MEDITEC D 160, without handle
bar
ABS (UL 94 HB)
off-white RAL 9002
290x200x74mm
IP 40

MEDITEC 医疗器械盒



B2211105
 MEDITEC D 160, with handle bar
 ABS (UL 94 HB)
 off-white RAL 9002
 290x200x74mm
 IP 40



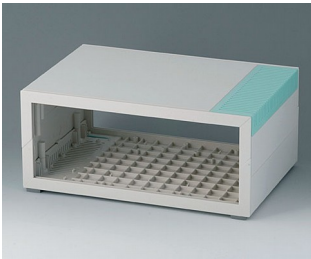
B2211107
 MEDITEC D 160, with handle bar
 ABS (UL 94 HB)
 off-white RAL 9002
 290x200x74mm
 IP 40



B2211115
 MEDITEC D 160, with handle bar
 ABS (UL 94 HB)
 off-white RAL 9002
 290x200x74mm
 IP 40



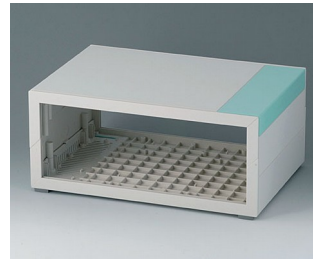
B2211117
 MEDITEC D 160, with handle bar
 ABS (UL 94 HB)
 off-white RAL 9002
 290x200x74mm
 IP 40



B2211205
 MEDITEC D 160, without handle bar
 ABS (UL 94 HB)
 off-white RAL 9002
 290x200x124mm
 IP 40



B2211207
 MEDITEC D 160, without handle bar
 ABS (UL 94 HB)
 off-white RAL 9002
 290x200x124mm
 IP 40



B2211215
 MEDITEC D 160, without handle bar
 ABS (UL 94 HB)
 off-white RAL 9002
 290x200x124mm
 IP 40



B2211217
 MEDITEC D 160, without handle bar
 ABS (UL 94 HB)
 off-white RAL 9002
 290x200x124mm
 IP 40



B2211305
 MEDITEC D 160, with handle bar
 ABS (UL 94 HB)
 off-white RAL 9002
 290x200x124mm
 IP 40



B2211307
 MEDITEC D 160, with handle bar
 ABS (UL 94 HB)
 off-white RAL 9002
 290x200x124mm
 IP 40



B2211315
 MEDITEC D 160, with handle bar
 ABS (UL 94 HB)
 off-white RAL 9002
 290x200x124mm
 IP 40



B2211317
 MEDITEC D 160, with handle bar
 ABS (UL 94 HB)
 off-white RAL 9002
 290x200x124mm
 IP 40



B2212005
 MEDITEC E 220, without handle bar
 ABS (UL 94 HB)
 off-white RAL 9002
 160x260x74mm
 IP 40



B2212007
 MEDITEC E 220, without handle bar
 ABS (UL 94 HB)
 off-white RAL 9002
 160x260x74mm
 IP 40



B2212015
 MEDITEC E 220, without handle bar
 ABS (UL 94 HB)
 off-white RAL 9002
 160x260x74mm
 IP 40



B2212017
 MEDITEC E 220, without handle bar
 ABS (UL 94 HB)
 off-white RAL 9002
 160x260x74mm
 IP 40

MEDITEC 医疗器械盒



B2212105
MEDITEC E 220, with handle bar
ABS (UL 94 HB)
off-white RAL 9002
160x260x74mm
IP 40



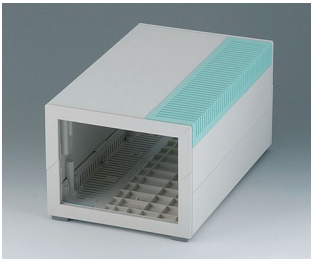
B2212107
MEDITEC E 220, with handle bar
ABS (UL 94 HB)
off-white RAL 9002
160x260x74mm
IP 40



B2212115
MEDITEC E 220, with handle bar
ABS (UL 94 HB)
off-white RAL 9002
160x260x74mm
IP 40



B2212117
MEDITEC E 220, with handle bar
ABS (UL 94 HB)
off-white RAL 9002
160x260x74mm
IP 40



B2212205
MEDITEC E 220, without handle bar
ABS (UL 94 HB)
off-white RAL 9002
160x260x124mm
IP 40



B2212207
MEDITEC E 220, without handle bar
ABS (UL 94 HB)
off-white RAL 9002
160x260x124mm
IP 40



B2212215
MEDITEC E 220, without handle bar
ABS (UL 94 HB)
off-white RAL 9002
160x260x124mm
IP 40



B2212217
MEDITEC E 220, without handle bar
ABS (UL 94 HB)
off-white RAL 9002
160x260x124mm
IP 40



B2212305
MEDITEC E 220, with handle bar
ABS (UL 94 HB)
off-white RAL 9002
160x260x124mm
IP 40



B2212307
MEDITEC E 220, with handle bar
ABS (UL 94 HB)
off-white RAL 9002
160x260x124mm
IP 40



B2212315
MEDITEC E 220, with handle bar
ABS (UL 94 HB)
off-white RAL 9002
160x260x124mm
IP 40



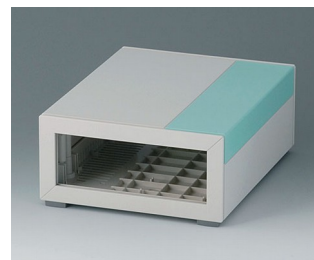
B2212317
MEDITEC E 220, with handle bar
ABS (UL 94 HB)
off-white RAL 9002
160x260x124mm
IP 40



B2213005
MEDITEC E 160, without handle bar
ABS (UL 94 HB)
off-white RAL 9002
160x200x74mm
IP 40



B2213007
MEDITEC E 160, without handle bar
ABS (UL 94 HB)
off-white RAL 9002
160x200x74mm
IP 40



B2213015
MEDITEC E 160, without handle bar
ABS (UL 94 HB)
off-white RAL 9002
160x200x74mm
IP 40



B2213017
MEDITEC E 160, without handle bar
ABS (UL 94 HB)
off-white RAL 9002
160x200x74mm
IP 40

MEDITEC 医疗器械盒



B2213105
MEDITEC E 160, with handle
bar
ABS (UL 94 HB)
off-white RAL 9002
160x200x74mm
IP 40



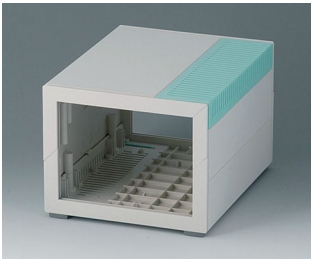
B2213107
MEDITEC E 160, with handle
bar
ABS (UL 94 HB)
off-white RAL 9002
160x200x74mm
IP 40



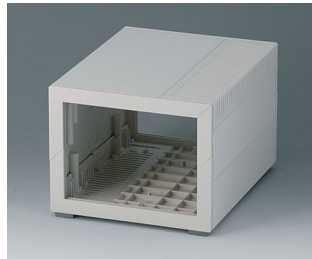
B2213115
MEDITEC E 160, with handle
bar
ABS (UL 94 HB)
off-white RAL 9002
160x200x74mm
IP 40



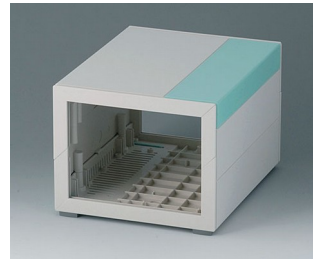
B2213117
MEDITEC E 160, with handle
bar
ABS (UL 94 HB)
off-white RAL 9002
160x200x74mm
IP 40



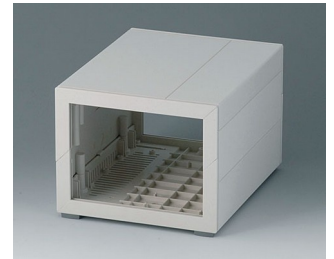
B2213205
MEDITEC E 160, without handle
bar
ABS (UL 94 HB)
off-white RAL 9002
160x200x124mm
IP 40



B2213207
MEDITEC E 160, without handle
bar
ABS (UL 94 HB)
off-white RAL 9002
160x200x124mm
IP 40



B2213215
MEDITEC E 160, without handle
bar
ABS (UL 94 HB)
off-white RAL 9002
160x200x124mm
IP 40



B2213217
MEDITEC E 160, without handle
bar
ABS (UL 94 HB)
off-white RAL 9002
160x200x124mm
IP 40



B2213305
MEDITEC E 160, with handle
bar
ABS (UL 94 HB)
off-white RAL 9002
160x200x124mm
IP 40



B2213307
MEDITEC E 160, with handle
bar
ABS (UL 94 HB)
off-white RAL 9002
160x200x124mm
IP 40



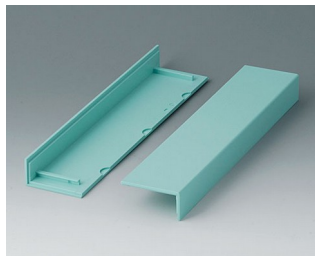
B2213315
MEDITEC E 160, with handle
bar
ABS (UL 94 HB)
off-white RAL 9002
160x200x124mm
IP 40



B2213317
MEDITEC E 160, with handle
bar
ABS (UL 94 HB)
off-white RAL 9002
160x200x124mm
IP 40

MEDITEC 医疗器械盒

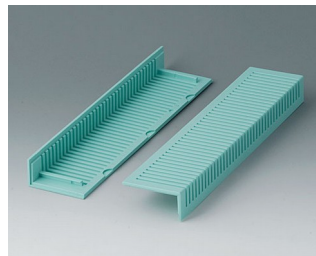
系统组件使产品完整



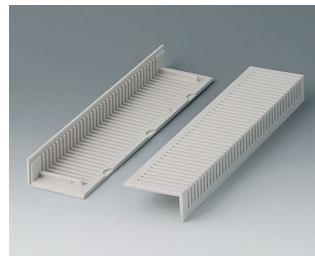
B2020005
Side trims 220, without
ventilation
ABS
lagoon



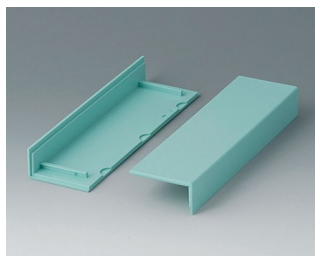
B2020007
Side trims 220, without
ventilation
ABS (UL 94 HB)
off-white RAL 9002



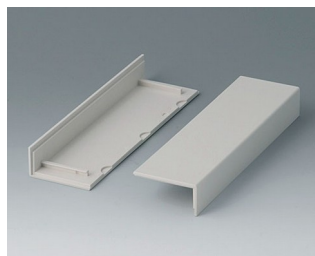
B2021005
Side trims 220, with ventilation
ABS
lagoon



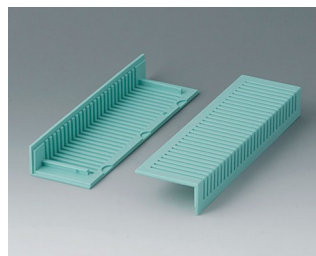
B2021007
Side trims 220, with ventilation
ABS (UL 94 HB)
off-white RAL 9002



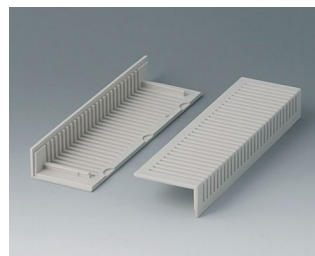
B2022005
Side trims 160, without
ventilation
ABS
lagoon



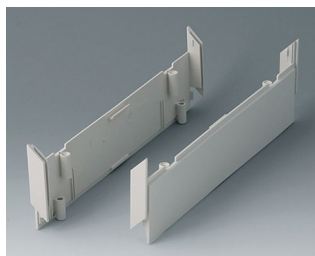
B2022007
Side trims 160, without
ventilation
ABS (UL 94 HB)
off-white RAL 9002



B2023005
Side trims 160, with ventilation
ABS
lagoon



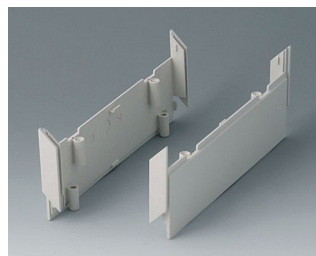
B2023007
Side trims 160, with ventilation
ABS (UL 94 HB)
off-white RAL 9002



B2030007
Side panels 220, without holes
ABS (UL 94 HB)
off-white RAL 9002



B2030107
Side panels 220, with holes for
handle
ABS (UL 94 HB)
off-white RAL 9002



B2031007
Side panels 160, without holes
ABS (UL 94 HB)
off-white RAL 9002



B2031107
Side panels 160, with holes for
handle
ABS (UL 94 HB)
off-white RAL 9002



B2116507
Handle bar E
PA 6
off-white RAL 9002



B2129507
Handle bar D
PA 6
off-white RAL 9002



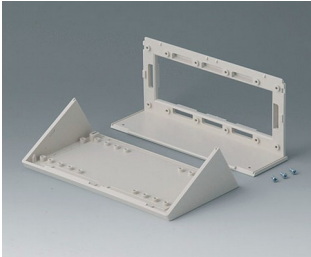
B2133012
Wall mounting brackets
PA 6
volcano



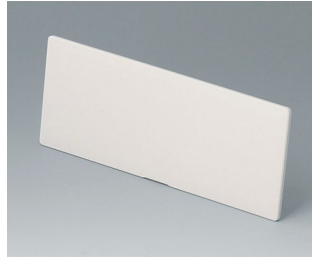
B2135017
Connectors
ABS (UL 94 HB)
off-white RAL 9002

MEDITEC 医疗器械盒

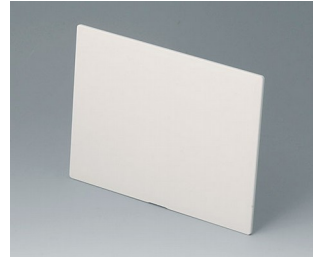
需加附件使产品完整



B2116007
Sloping control panel E
ABS (UL 94 HB)
off-white RAL 9002



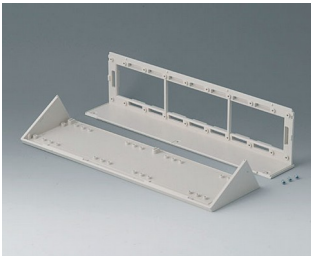
B2116307
Front / rear panel E, flat
ABS (UL 94 HB)
off-white RAL 9002
141.6x55.6x3mm



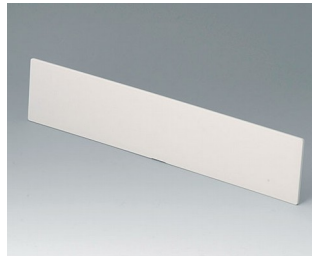
B2116407
Front / rear panel Z1
ABS (UL 94 HB)
off-white RAL 9002
141.6x105.6x3mm



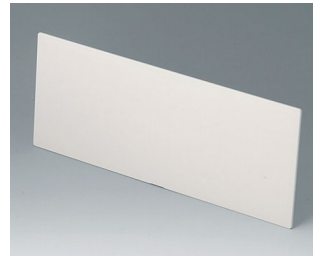
B2116707
Infill panel E
ABS (UL 94 HB)
off-white RAL 9002
142x55x5mm



B2129007
Sloping control panel D
ABS (UL 94 HB)
off-white RAL 9002



B2129307
Front / rear panel D, flat
ABS (UL 94 HB)
off-white RAL 9002
271.6x55.6x3mm

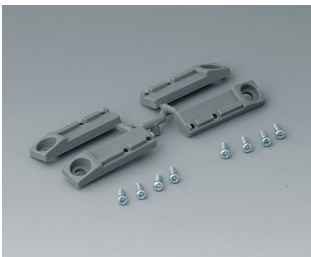


B2129407
Front / rear panel Z1
ABS (UL 94 HB)
off-white RAL 9002
271.6x105.6x3mm



B2129707
Infill panel D
ABS (UL 94 HB)
off-white RAL 9002
272x55x5mm

“挂墙支架” 配件



B2133012
Wall mounting brackets
PA 6
volcano



B2134012
Stacking elements
PA 6
volcano

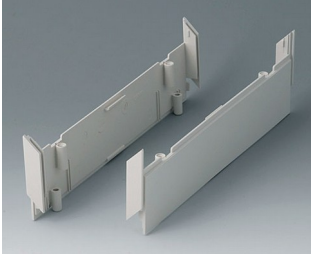
“螺钉” 附件



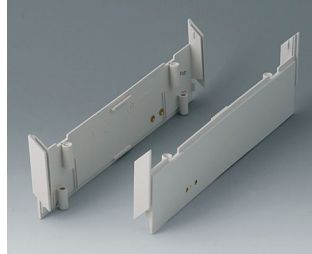
A9199008
Set of screws

MEDITEC 医疗器械盒

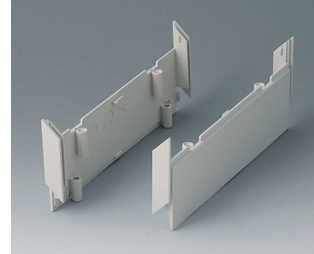
附件



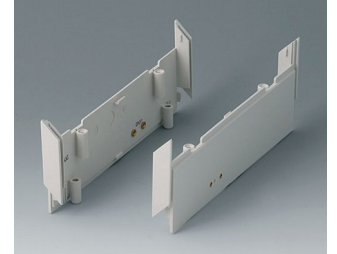
B2030007
Side panels 220, without holes
ABS (UL 94 HB)
off-white RAL 9002



B2030107
Side panels 220, with holes for
handle
ABS (UL 94 HB)
off-white RAL 9002



B2031007
Side panels 160, without holes
ABS (UL 94 HB)
off-white RAL 9002



B2031107
Side panels 160, with holes for
handle
ABS (UL 94 HB)
off-white RAL 9002



B2116407
Front / rear panel Z1
ABS (UL 94 HB)
off-white RAL 9002
141.6x105.6x3mm



B2116507
Handle bar E
PA 6
off-white RAL 9002



B2116707
Infill panel E
ABS (UL 94 HB)
off-white RAL 9002
142x55x5mm



B2129407
Front / rear panel Z1
ABS (UL 94 HB)
off-white RAL 9002
271.6x105.6x3mm



B2129507
Handle bar D
PA 6
off-white RAL 9002



B2129707
Infill panel D
ABS (UL 94 HB)
off-white RAL 9002
272x55x5mm



B2134012
Stacking elements
PA 6
volcano



B2135017
Connectors
ABS (UL 94 HB)
off-white RAL 9002

保留技术更改可能性。 © OKW 机箱系统, Buchen/德国。