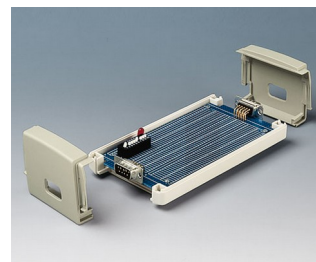
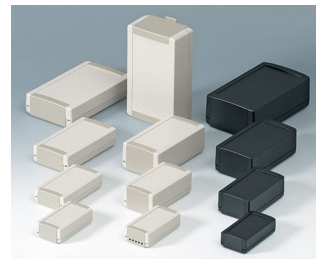


TOPTEC 特级机盒

通用塑料机盒

OKW 的 TOPTEC 特级机盒配备有双端接口，其超出机盒实际宽度。不再需要将连接器安装到盒壁并用电线与电路板连接。

- 具备室内应用的美观设计，桌面或墙壁应用
- 经济实惠、无螺钉机盒组装
- 下盒侧面开放式设计，提供方便快捷的组装
- 由于端面可拆卸，使电子设备和接口首次达到作为预安装完毕的整包
- 选择广泛的 28 款机盒类型
- F 型带扁平上盒
- H 型带较高上盒
- 无或带通风槽的可拆卸端面部件用于散热或扩音
- 通过隐藏的挂墙卡固结构，达到最佳的墙壁安装无需拆卸机盒
- 可高效安装在 DIN 标准导轨上
- 防护等级 IP 40
- 操作面板凹陷，用于保护膜键盘
- 固定柱用于固定电路板和元器件



TOPTEC 特级机盒

应用示例

用于电子和电气设备的通用机盒

- 例如在监控技术中作为控制设备
- 信号系统和控制系统
- 医疗和实验室技术
- 电脑外设
- 工业自动化
- IoT/IIoT



Adaptive multicontroller for single sensors



IR-Controlbox



MPI adapter



PROFIBUS radio system

按客户要求修改加工

如何体现您的特殊产品？如有需要，我们执行所有必要的修改和精加工，提供组装完毕的机盒。
产品类型用于 Toptec 特级机盒



机械加工



表面涂渡



图文打印



激光打印字体



装饰膜



特殊材质



EMC 保护



制备 / 组装

TOPTEC 特级机盒

类型



B1040365
TOPTEC 102, Vers. I
ABS (UL 94 HB)
off-white RAL 9002
102x54x30mm
IP 40



B1040369
TOPTEC 102, Vers. I
ABS (UL 94 HB)
black RAL 9005
102x54x30mm
IP 40



B1040465
TOPTEC 102, Vers. II
ABS (UL 94 HB)
off-white RAL 9002
102x54x30mm
IP 40



B1040469
TOPTEC 102, Vers. II
ABS (UL 94 HB)
black RAL 9005
102x54x30mm
IP 40



B1050365
TOPTEC 123 H, Vers. I
ABS (UL 94 HB)
off-white RAL 9002
123x68x45mm
IP 40



B1050369
TOPTEC 123 H, Vers. I
ABS (UL 94 HB)
black RAL 9005
123x68x45mm
IP 40



B1050465
TOPTEC 123 H, Vers. II
ABS (UL 94 HB)
off-white RAL 9002
123x68x45mm
IP 40



B1050469
TOPTEC 123 H, Vers. II
ABS (UL 94 HB)
black RAL 9005
123x68x45mm
IP 40



B1055365
TOPTEC 123 F, Vers. I
ABS (UL 94 HB)
off-white RAL 9002
123x68x30mm
IP 40



B1055369
TOPTEC 123 F, Vers. I
ABS (UL 94 HB)
black RAL 9005
123x68x30mm
IP 40



B1055465
TOPTEC 123 F, Vers. II
ABS (UL 94 HB)
off-white RAL 9002
123x68x30mm
IP 40



B1055469
TOPTEC 123 F, Vers. II
ABS (UL 94 HB)
black RAL 9005
123x68x30mm
IP 40



B1060365
TOPTEC 154 H, Vers. I
ABS (UL 94 HB)
off-white RAL 9002
154x84x56mm
IP 40



B1060369
TOPTEC 154 H, Vers. I
ABS (UL 94 HB)
black RAL 9005
154x84x56mm
IP 40



B1060465
TOPTEC 154 H, Vers. II
ABS (UL 94 HB)
off-white RAL 9002
154x84x56mm
IP 40



B1060469
TOPTEC 154 H, Vers. II
ABS (UL 94 HB)
black RAL 9005
154x84x56mm
IP 40

TOPTEC 特级机盒



B1065365
TOPTEC 154 F, Vers. I
ABS (UL 94 HB)
off-white RAL 9002
154x84x38mm
IP 40



B1065369
TOPTEC 154 F, Vers. I
ABS (UL 94 HB)
black RAL 9005
154x84x38mm
IP 40



B1065465
TOPTEC 154 F, Vers. II
ABS (UL 94 HB)
off-white RAL 9002
154x84x38mm
IP 40



B1065469
TOPTEC 154 F, Vers. II
ABS (UL 94 HB)
black RAL 9005
154x84x38mm
IP 40



B1070365
TOPTEC 194 H, Vers. I
ABS (UL 94 HB)
off-white RAL 9002
194x115x68mm
IP 40



B1070369
TOPTEC 194 H, Vers. I
ABS (UL 94 HB)
black RAL 9005
194x115x68mm
IP 40



B1070465
TOPTEC 194 H, Vers. II
ABS (UL 94 HB)
off-white RAL 9002
194x115x68mm
IP 40



B1070469
TOPTEC 194 H, Vers. II
ABS (UL 94 HB)
black RAL 9005
194x115x68mm
IP 40



B1075365
TOPTEC 194 F, Vers. I
ABS (UL 94 HB)
off-white RAL 9002
194x115x46mm
IP 40



B1075369
TOPTEC 194 F, Vers. I
ABS (UL 94 HB)
black RAL 9005
194x115x46mm
IP 40

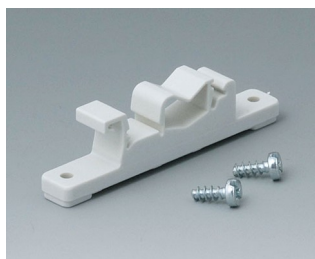


B1075465
TOPTEC 194 F, Vers. II
ABS (UL 94 HB)
off-white RAL 9002
194x115x46mm
IP 40



B1075469
TOPTEC 194 F, Vers. II
ABS (UL 94 HB)
black RAL 9005
194x115x46mm
IP 40

“挂墙支架” 配件



B1300017
Fastening element for DIN-Rails
PA 6
off-white RAL 9002



B1300019
Fastening element for DIN-Rails
PA 6
black RAL 9005

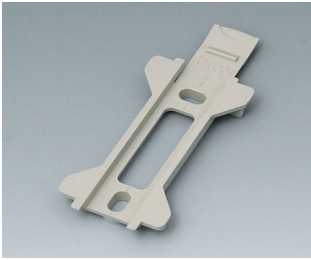


B1340028
Wall suspension element for
Toptec 102
PC+ABS (UL 94 V-0)
pebble grey RAL 7032



B1340029
Wall suspension element for
Toptec 102
ABS (UL 94 HB)
black RAL 9005

TOPTEC 特级机盒



B1350028
Wall suspension element for
Toptec 123
PC+ABS (UL 94 V-0)
pebble grey RAL 7032



B1350029
Wall suspension element for
Toptec 123
ABS (UL 94 HB)
black RAL 9005



B1360028
Wall suspension element for
Toptec 154
PC+ABS (UL 94 V-0)
pebble grey RAL 7032



B1360029
Wall suspension element for
Toptec 154
ABS (UL 94 HB)
black RAL 9005



B1370028
Wall suspension element for
Toptec 194
PC+ABS (UL 94 V-0)
pebble grey RAL 7032



B1370029
Wall suspension element for
Toptec 194
ABS (UL 94 HB)
black RAL 9005

“螺钉” 附件



A0305031
Self-tapping screws 2.5 x 6 mm
(PZ1)



A9199008
Set of screws

附件



A9207150
Anti-slide feet 6.5 x 2 mm
transparent

保留技术更改可能性。 © OKW 机盒系统, Buchen/德国。