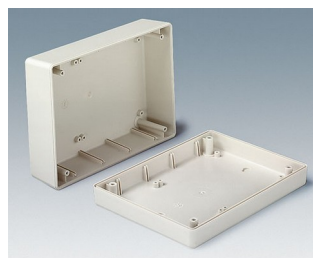
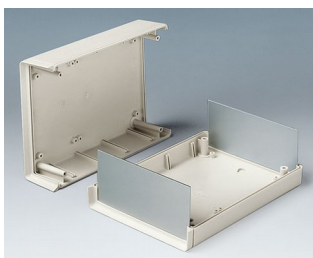
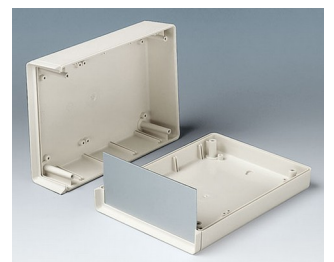
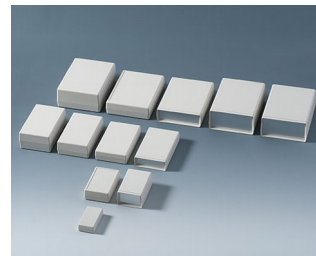


# SHELL-TYPE CASES 壳状盒

## 通用仪器盒

Shell-Type Cases 壳状盒产品系列提供不同的大小规格、高度和类型。请选择满足您独特要求的机盒！

- 3 种类型 51 款式机盒:
  - 类型 V – 端面敞开，后面封闭
  - 类型 O – 端面敞开，后面敞开
  - 类型 G – 端面封闭，后面封闭
- 由于周向榫槽连接达到高度稳定性
- 导槽用于垂直安装分隔板和电路板
- 上盒和下盒都设有安装用固定柱
- 前面板和后面板为铝材质或红色 PMMA (有机玻璃®) 作为附件
- 带适配 4 个 AA, 2 个 AA, 1 个 9 V 或 2 个 9 V 电池的电池仓的类型可选(类型 V 和 G)
- 封闭式类型 (类型 G) 也可带有凹陷的操作面板，以保护膜键盘
- 使用密封套件 (附件) 时，不带电池仓的封闭型 (G 型) 防护等级达到 IP 65
- EMC: 根据要求，您可以选择镀铝的机盒; 通过提供的接触板条 (附件) 达到改善接触效果
- 墙壁安装片或墙壁支架设置套件作为附件
- 通过增加通用附件达到附加功能



# SHELL-TYPE CASES 壳状盒

## 应用示例

- 测量调控技术，控制技术
- 医疗和实验室技术
- 外围设备和接口设备
- 开关设施和调制解调器



Magnetic metal detector



System for leak detection in leisure vehicles



Teleservice Gateway MGW/865

## 按客户要求修改加工

如何体现您的特殊产品？如有需要，我们执行所有必要的修改和精加工，提供组装完毕的机盒。  
产品类型用于 Shell-Type Cases 壳状盒



机械加工



表面涂渡



图文打印



激光打印字体



装饰膜



特殊材质



EMC 保护



制备 / 组装

# SHELL-TYPE CASES 壳状盒

## 类型



**A9404331**  
SHELL-TYPE CASES G 85,  
Vers. I  
ABS (UL 94 HB)  
off-white RAL 9002  
45x85x22mm  
IP 65 opt.



**A9404333**  
SHELL-TYPE CASES V 85,  
Vers. I  
ABS (UL 94 HB)  
off-white RAL 9002  
45x85x22mm



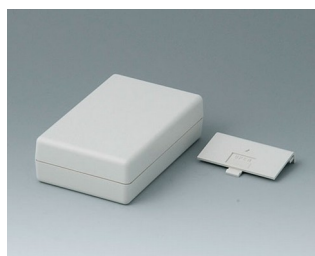
**A9404341**  
SHELL-TYPE CASES G 85,  
Vers. I  
ABS (UL 94 HB)  
off-white RAL 9002  
45x85x33mm  
IP 65 opt.



**A9404441**  
SHELL-TYPE CASES G 85,  
Vers. I  
ABS (UL 94 HB)  
off-white RAL 9002  
45x85x45mm  
IP 65 opt.



**A9406331**  
SHELL-TYPE CASES G 110,  
Vers. I  
ABS (UL 94 HB)  
off-white RAL 9002  
72x114x33mm  
IP 65 opt.



**A9406332**  
SHELL-TYPE CASES G 110,  
Vers. II  
ABS (UL 94 HB)  
off-white RAL 9002  
72x114x33mm



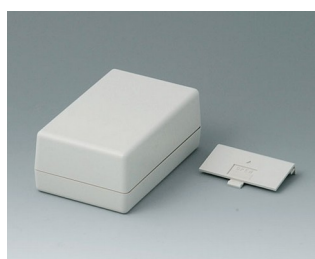
**A9406333**  
SHELL-TYPE CASES V 110,  
Vers. I  
ABS (UL 94 HB)  
off-white RAL 9002  
72x114x33mm



**A9406334**  
SHELL-TYPE CASES V 110,  
Vers. II  
ABS (UL 94 HB)  
off-white RAL 9002  
72x114x33mm



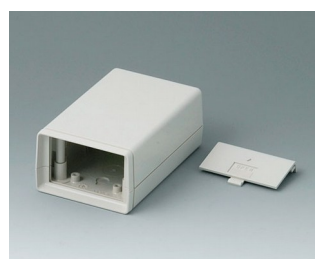
**A9406341**  
SHELL-TYPE CASES G 110,  
Vers. I  
ABS (UL 94 HB)  
off-white RAL 9002  
72x114x45mm  
IP 65 opt.



**A9406342**  
SHELL-TYPE CASES G 110,  
Vers. II  
ABS (UL 94 HB)  
off-white RAL 9002  
72x114x45mm



**A9406343**  
SHELL-TYPE CASES V 110,  
Vers. I  
ABS (UL 94 HB)  
off-white RAL 9002  
72x114x45mm

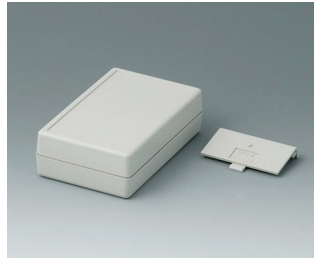


**A9406344**  
SHELL-TYPE CASES V 110,  
Vers. II  
ABS (UL 94 HB)  
off-white RAL 9002  
72x114x45mm

# SHELL-TYPE CASES 壳状盒



**A9406351**  
SHELL-TYPE CASES G 110,  
Vers. I  
ABS (UL 94 HB)  
off-white RAL 9002  
72x114x33.5mm  
IP 65 opt.



**A9406352**  
SHELL-TYPE CASES G 110,  
Vers. II  
ABS (UL 94 HB)  
off-white RAL 9002  
72x114x33.5mm



**A9406441**  
SHELL-TYPE CASES G 110,  
Vers. I  
ABS (UL 94 HB)  
off-white RAL 9002  
72x114x57mm  
IP 65 opt.



**A9406443**  
SHELL-TYPE CASES V 110,  
Vers. I  
ABS (UL 94 HB)  
off-white RAL 9002  
72x114x57mm



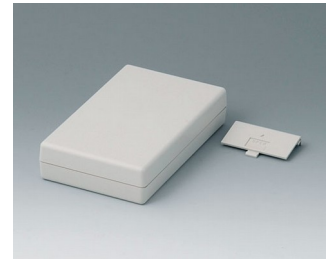
**A9408330**  
SHELL-TYPE CASES O 155,  
Vers. I  
ABS (UL 94 HB)  
off-white RAL 9002  
95x158x33mm



**A9408331**  
SHELL-TYPE CASES G 155,  
Vers. I  
ABS (UL 94 HB)  
off-white RAL 9002  
95x158x33mm  
IP 65 opt.



**A9408333**  
SHELL-TYPE CASES V 155,  
Vers. I  
ABS (UL 94 HB)  
off-white RAL 9002  
95x158x33mm



**A9408335**  
SHELL-TYPE CASES G 155,  
Vers. IV  
ABS (UL 94 HB)  
off-white RAL 9002  
95x158x33mm



**A9408336**  
SHELL-TYPE CASES V 155,  
Vers. IV  
ABS (UL 94 HB)  
off-white RAL 9002  
95x158x33mm



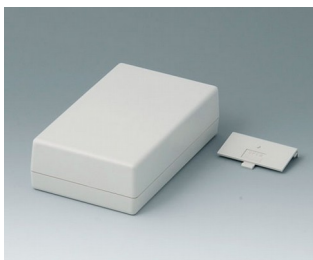
**A9408340**  
SHELL-TYPE CASES O 155,  
Vers. I  
ABS (UL 94 HB)  
off-white RAL 9002  
95x158x45mm



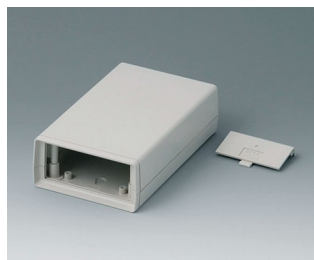
**A9408341**  
SHELL-TYPE CASES G 155,  
Vers. I  
ABS (UL 94 HB)  
off-white RAL 9002  
95x158x45mm  
IP 65 opt.



**A9408343**  
SHELL-TYPE CASES V 155,  
Vers. I  
ABS (UL 94 HB)  
off-white RAL 9002  
95x158x45mm



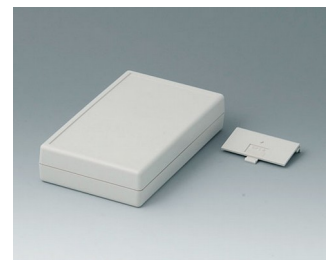
**A9408345**  
SHELL-TYPE CASES G 155,  
Vers. IV  
ABS (UL 94 HB)  
off-white RAL 9002  
95x158x45mm



**A9408346**  
SHELL-TYPE CASES V 155,  
Vers. IV  
ABS (UL 94 HB)  
off-white RAL 9002  
95x158x45mm



**A9408351**  
SHELL-TYPE CASES G 155,  
Vers. I  
ABS (UL 94 HB)  
off-white RAL 9002  
95x158x33.5mm  
IP 65 opt.



**A9408355**  
SHELL-TYPE CASES G 155,  
Vers. IV  
ABS (UL 94 HB)  
off-white RAL 9002  
95x158x33.5mm

# SHELL-TYPE CASES 壳状盒



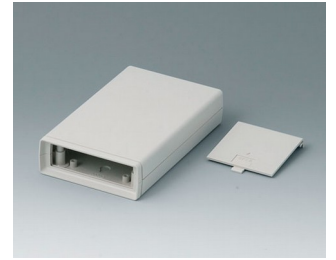
**A9408440**  
SHELL-TYPE CASES O 155,  
Vers. I  
ABS (UL 94 HB)  
off-white RAL 9002  
95x155x57mm



**A9408441**  
SHELL-TYPE CASES G 155,  
Vers. I  
ABS (UL 94 HB)  
off-white RAL 9002  
95x158x57mm  
IP 65 opt.



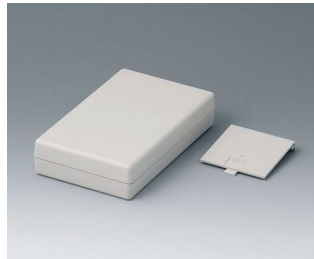
**A9408443**  
SHELL-TYPE CASES V 155,  
Vers. I  
ABS (UL 94 HB)  
off-white RAL 9002  
95x158x57mm



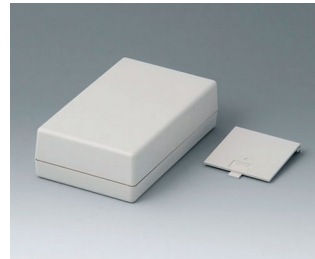
**A9408638**  
SHELL-TYPE CASES V 155,  
Vers. V  
ABS (UL 94 HB)  
off-white RAL 9002  
95x158x33mm



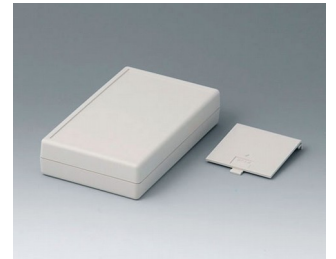
**A9408648**  
SHELL-TYPE CASES V 155,  
Vers. V  
ABS (UL 94 HB)  
off-white RAL 9002  
95x158x45mm



**A9408737**  
SHELL-TYPE CASES G 155,  
Vers. V  
ABS (UL 94 HB)  
off-white RAL 9002  
95x158x33mm



**A9408747**  
SHELL-TYPE CASES G 155,  
Vers. V  
ABS (UL 94 HB)  
off-white RAL 9002  
95x158x45mm



**A9408757**  
SHELL-TYPE CASES G 155,  
Vers. V  
ABS (UL 94 HB)  
off-white RAL 9002  
95x158x33.5mm



**A9413330**  
SHELL-TYPE CASES O 190,  
Vers. I  
ABS (UL 94 HB)  
off-white RAL 9002  
138x190x45mm



**A9413331**  
SHELL-TYPE CASES G 190,  
Vers. I  
ABS (UL 94 HB)  
off-white RAL 9002  
138x190x45mm  
IP 65 opt.



**A9413333**  
SHELL-TYPE CASES V 190,  
Vers. I  
ABS (UL 94 HB)  
off-white RAL 9002  
138x190x45mm



**A9413340**  
SHELL-TYPE CASES O 190,  
Vers. I  
ABS (UL 94 HB)  
off-white RAL 9002  
138x190x68mm



**A9413341**  
SHELL-TYPE CASES G 190,  
Vers. I  
ABS (UL 94 HB)  
off-white RAL 9002  
138x190x68mm  
IP 65 opt.



**A9413343**  
SHELL-TYPE CASES V 190,  
Vers. I  
ABS (UL 94 HB)  
off-white RAL 9002  
138x190x68mm



**A9413351**  
SHELL-TYPE CASES G 190,  
Vers. I  
ABS (UL 94 HB)  
off-white RAL 9002  
138x190x45.5mm  
IP 65 opt.



**A9413440**  
SHELL-TYPE CASES O 190,  
Vers. I  
ABS (UL 94 HB)  
off-white RAL 9002  
138x190x91mm

# SHELL-TYPE CASES 壳状盒



**A9413441**  
SHELL-TYPE CASES G 190,  
Vers. I  
ABS (UL 94 HB)  
off-white RAL 9002  
138x190x91mm  
IP 65 opt.



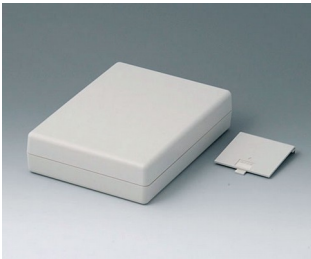
**A9413443**  
SHELL-TYPE CASES V 190,  
Vers. I  
ABS (UL 94 HB)  
off-white RAL 9002  
138x190x91mm



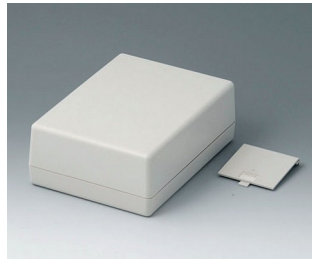
**A9413638**  
SHELL-TYPE CASES V 190,  
Vers. V  
ABS (UL 94 HB)  
off-white RAL 9002  
138x190x45mm



**A9413648**  
SHELL-TYPE CASES V 190,  
Vers. V  
ABS (UL 94 HB)  
off-white RAL 9002  
138x190x68mm



**A9413737**  
SHELL-TYPE CASES G 190,  
Vers. V  
ABS (UL 94 HB)  
off-white RAL 9002  
138x190x45mm



**A9413747**  
SHELL-TYPE CASES G 190,  
Vers. V  
ABS (UL 94 HB)  
off-white RAL 9002  
138x190x68mm



**A9413757**  
SHELL-TYPE CASES G 190,  
Vers. V  
ABS (UL 94 HB)  
off-white RAL 9002  
138x190x45.5mm

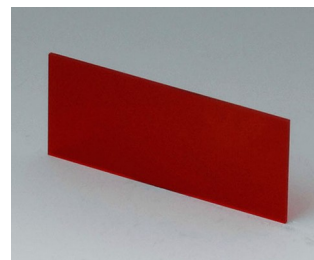
## 需加附件使产品完整



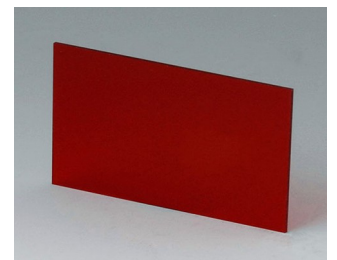
**A9104111**  
Front / rear panel V 85  
Aluminium  
matt anodised  
36x14.6x1mm



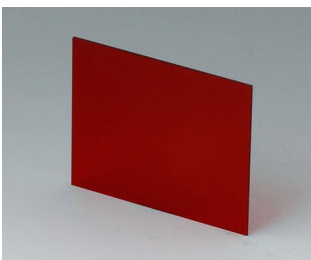
**A9104113**  
Front / rear panel V 85  
Acrylglas  
red transparent  
36x14.6x1mm



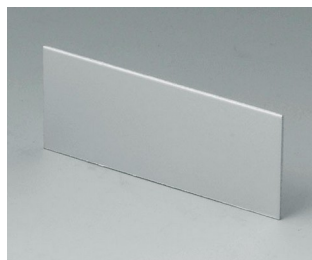
**A9106113**  
Front / rear panel V 110  
Acrylglas  
red transparent  
59.3x25x1mm



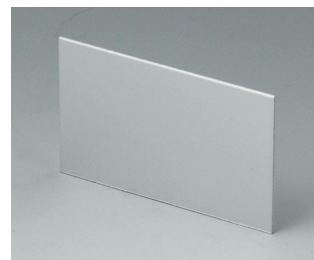
**A9106123**  
Front / rear panel V 110  
Acrylglas  
red transparent  
59.3x37x1mm



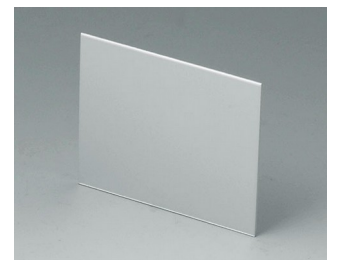
**A9106223**  
Front / rear panel V 110  
Acrylglas  
red transparent  
59.3x49x1mm



**A9107111**  
Front / rear panel V 110  
Aluminium  
matt anodised  
59.3x25x1mm

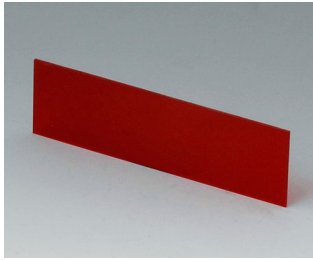


**A9107121**  
Front / rear panel V 110  
Aluminium  
matt anodised  
59.3x37x1mm

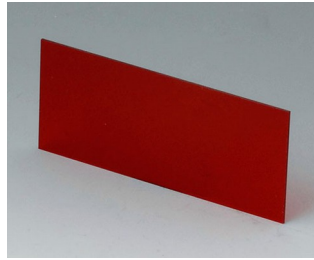


**A9107221**  
Front / rear panel V 110  
Aluminium  
matt anodised  
59.3x49x1mm

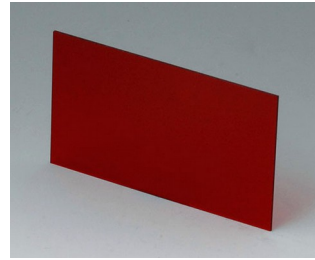
# SHELL-TYPE CASES 壳状盒



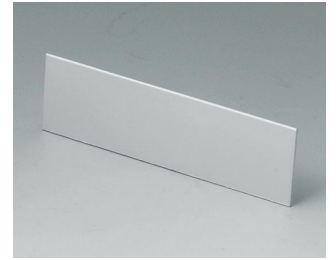
**A9108113**  
Front / rear panel V, O 155  
Acrylglas  
red transparent  
81.9x23.6x1mm



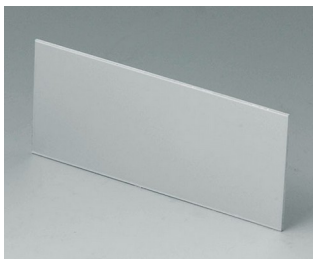
**A9108123**  
Front / rear panel V, O 155  
Acrylglas  
red transparent  
81.9x35.6x1mm



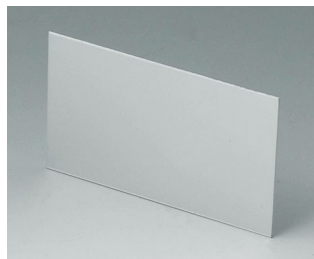
**A9108223**  
Front / rear panel V, O 155  
Acrylglas  
red transparent  
81.9x47.6x1mm



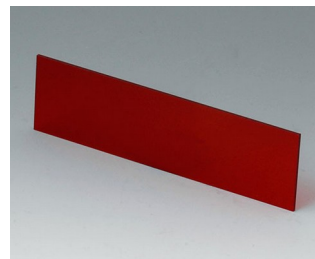
**A9109111**  
Front / rear panel V, O 155  
Aluminium  
matt anodised  
81.9x23.6x1mm



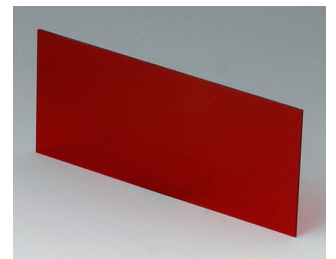
**A9109121**  
Front / rear panel V, O 155  
Aluminium  
matt anodised  
81.9x35.6x1mm



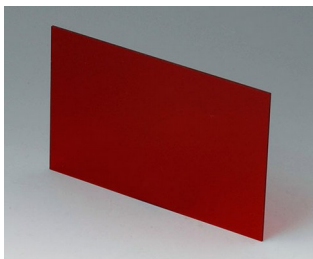
**A9109221**  
Front / rear panel V, O 155  
Aluminium  
matt anodised  
81.9x47.6x1mm



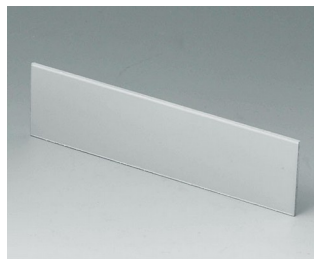
**A9113113**  
Front / rear panel V, O 190  
Acrylglas  
red transparent  
124.2x33.6x1.5mm



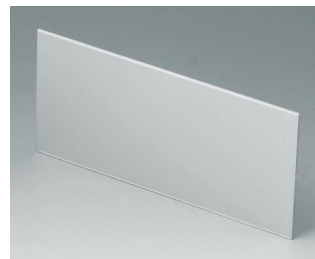
**A9113123**  
Front / rear panel V, O 190  
Acrylglas  
red transparent  
124.2x56.6x1.5mm



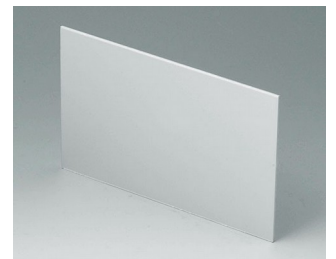
**A9113223**  
Front / rear panel V, O 190  
Acrylglas  
red transparent  
124.2x79.6x1.5mm



**A9114111**  
Front / rear panel V, O 190  
Aluminium  
matt anodised  
124.2x33.6x1.5mm

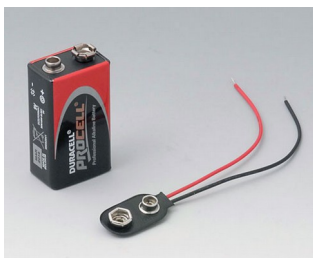


**A9114121**  
Front / rear panel V, O 190  
Aluminium  
matt anodised  
124.2x56.6x1.5mm



**A9114221**  
Front / rear panel V, O 190  
Aluminium  
matt anodised  
124.2x79.6x1.5mm

## “电池” 配件



**A9160003**  
Plug-in contact, 1 x 9 V (PP3)



**A9190013**  
Set of battery clips, 4 x AA  
Steel  
nickel-plated



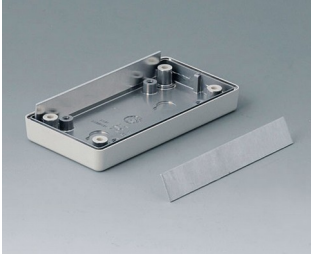
**A9190014**  
Set of battery clips, 2 x AA  
Steel  
nickel-plated



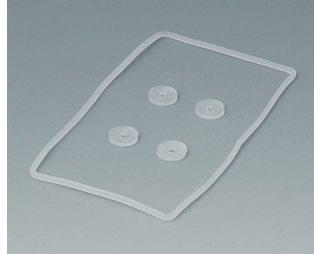
**A9250250**  
Battery spacer  
PE foam  
50x25x4mm

# SHELL-TYPE CASES 壳状盒

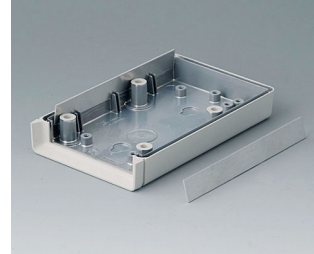
## “保护等级” 附件



**A9104073**  
Contact-strips V, G 85  
Aluminium



**A9104250**  
Sealing kit G 85



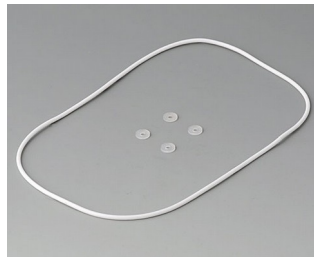
**A9106095**  
Contact-strips V, G 110  
Aluminium



**A9106352**  
Sealing kit G 110



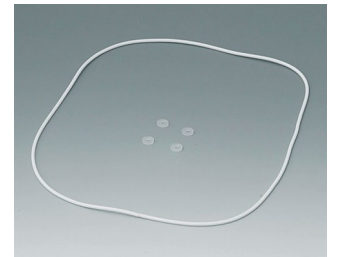
**A9108120**  
Contact-strips V, O, G 155  
Aluminium



**A9108486**  
Sealing kit G 155



**A9113150**  
Contact-strips V, O, G 190  
Aluminium

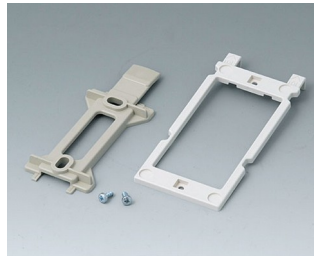


**A9113630**  
Sealing kit G 190

## “挂墙支架” 配件



**A9204108**  
Wall mounting brackets  
PA 6  
pebble grey RAL 7032



**B1350048**  
Wall suspension elements  
ABS (UL 94 HB)  
pebble grey RAL 7032



**B1360048**  
Wall suspension elements  
ABS (UL 94 HB)  
pebble grey RAL 7032

## “手提” 盒附件



**A9100001**  
Ring eyelet  
PA 6  
volcano



**A9100002**  
Ring eyelet  
PA 6  
volcano



**A9172107**  
Belt/Pocket clip  
ABS (UL 94 HB)  
off-white RAL 9002  
62x30mm



# SHELL-TYPE CASES 壳状盒

## “螺钉” 附件



**A0306031**  
Self-tapping screws 3 x 6 mm  
(PZ1)

## 附件



**A9207150**  
Anti-slide feet 6.5 x 2 mm  
transparent



**A9210290**  
Anti-slide feet 9.5 x 3.8 mm  
transparent



**A9250807**  
Tilt foot bar  
ABS (UL 94 HB)  
off-white RAL 9002



**A9250817**  
Tilt foot bar  
ABS (UL 94 HB)  
off-white RAL 9002

保留技术更改可能性。 © OKW 机箱系统, Buchen/德国。