

# RAILTEC C 型导轨盒 C

## 模块化 DIN 标准导轨盒和组装件

广泛的机盒产品系列并适配 DIN 标准 EN 60715 的导轨盒或直接安装于墙壁。该系列还包括个性化组装件，通过简单的接头界面更换达到更大的灵活性。

- 所有类型的组装和连接工作都提供了最高度的组装简便性
  - 耐应力和耐高温性能优异的材料 (UL 94 V-0)
  - 通过简便的卡扣安装锁定机盒部件
  - **RAILTEC C 型导轨盒:** 适配接线端子排、插针排和前置插头; 可选框架用于额外的电路板安置; 前面板和盒盖提供不同的款式; 1-12 个模块宽度; 适配 DIN 导轨 EN 60715 TH35; 电路板在所有 3 个空间方向的定位; 用于 TH15 和 G32 (1-4 个模块) 的适配器作为附件
- |        |                          |
|--------|--------------------------|
| 类型 I   | 前面敞开, 接线端面畅通,<br>无通风槽    |
| 类型 II  | 前面敞开, 接线端面畅通,<br>带通风槽    |
| 类型 III | 前面敞开, 接线端面的盒壁延长,<br>无通风槽 |
| 类型 IV  | 前面封闭, 接线端面畅通,<br>无通风槽    |
- **RAILTEC SUPPORT 型导轨盒 SUPPORT:** 用于独特组装的模块化组装件; 适配 DIN 标准导轨 EN 60715 TH35, TH15 和 G32
  - 防护等级 < IP 40



# RAILTEC C 型导轨盒 C

## 按客户要求修改加工

如何体现您的特殊产品？如有需要，我们执行所有必要的修改和精加工，提供组装完毕的机盒。  
产品类型用于 Railtec C 型导轨盒 C



机械加工



表面涂渡



图文打印



激光打印字体



装饰膜



制备 / 组装

## 类型



**B6700100**  
RAILTEC C, 1 module, Vers. I  
PC (UL 94 V-0)  
light grey  
17.5x90x58mm



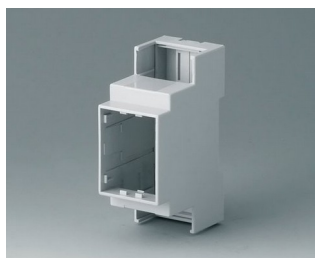
**B6700102**  
RAILTEC C, 1 module, Vers. II  
PC (UL 94 V-0)  
light grey  
17.5x90x58mm



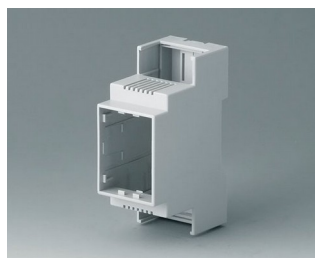
**B6700104**  
RAILTEC C, 1 module, Vers. III  
PC (UL 94 V-0)  
light grey  
17.5x90x58mm



**B6700106**  
RAILTEC C, 1 module, Vers. IV  
PC (UL 94 V-0)  
light grey  
17.5x90x58mm



**B6701100**  
RAILTEC C, 2 modules, Vers. I  
PC (UL 94 V-0)  
light grey  
36x90x58mm



**B6701102**  
RAILTEC C, 2 modules, Vers. II  
PC (UL 94 V-0)  
light grey  
36x90x58mm

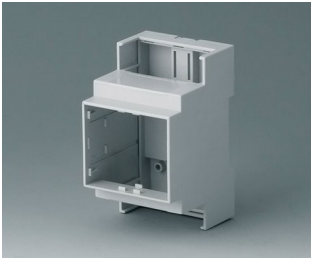


**B6701104**  
RAILTEC C, 2 modules, Vers. III  
PC (UL 94 V-0)  
light grey  
36x90x58mm

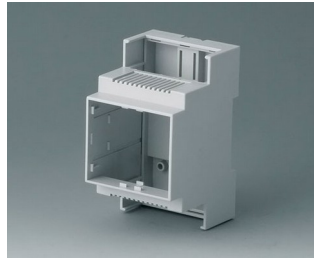


**B6701106**  
RAILTEC C, 2 modules, Vers. IV  
PC (UL 94 V-0)  
light grey  
36x90x58mm

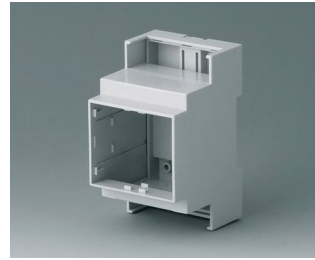
# RAILTEC C 型导轨盒 C



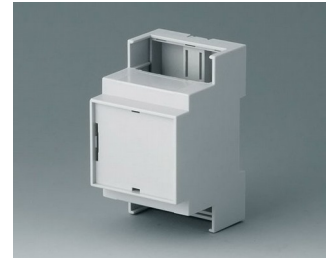
**B6702100**  
RAILTEC C, 3 modules, Vers. I  
PC (UL 94 V-0)  
light grey  
53x90x58mm



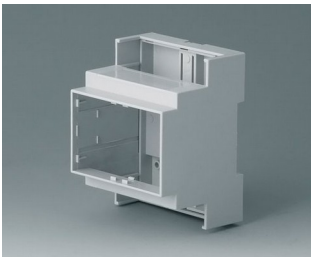
**B6702102**  
RAILTEC C, 3 modules, Vers. II  
PC (UL 94 V-0)  
light grey  
53x90x58mm



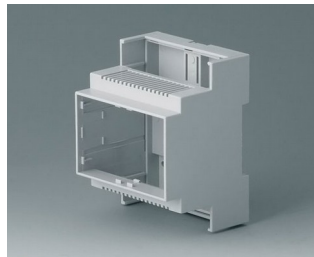
**B6702104**  
RAILTEC C, 3 modules, Vers. III  
PC (UL 94 V-0)  
light grey  
53x90x58mm



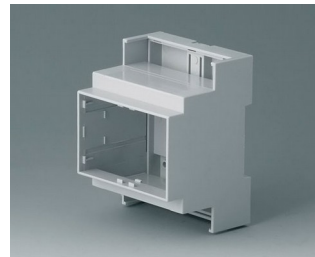
**B6702106**  
RAILTEC C, 3 modules, Vers. IV  
PC (UL 94 V-0)  
light grey  
53x90x58mm



**B6703100**  
RAILTEC C, 4 modules, Vers. I  
PC (UL 94 V-0)  
light grey  
71x90x58mm



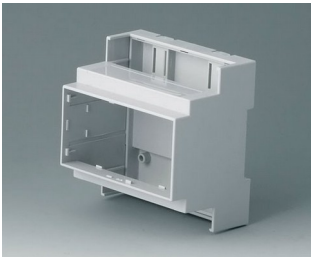
**B6703102**  
RAILTEC C, 4 modules, Vers. II  
PC (UL 94 V-0)  
light grey  
71x90x58mm



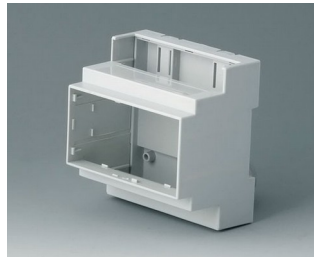
**B6703104**  
RAILTEC C, 4 modules, Vers. III  
PC (UL 94 V-0)  
light grey  
71x90x58mm



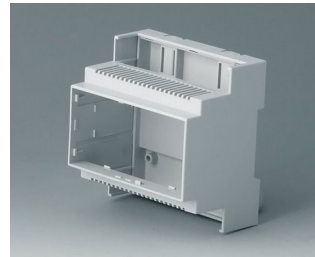
**B6703106**  
RAILTEC C, 4 modules, Vers. IV  
PC (UL 94 V-0)  
light grey  
71x90x58mm



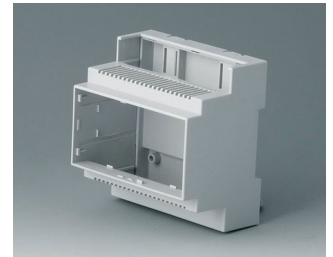
**B6704100**  
RAILTEC C, 5 modules, Vers. I  
PC (UL 94 V-0)  
light grey  
88x90x58mm



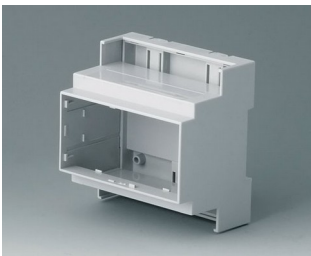
**B6704101**  
RAILTEC C, 5 modules, Vers. I  
PC (UL 94 V-0)  
light grey  
88x90x58mm



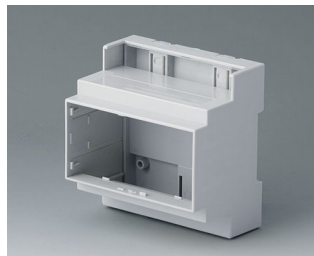
**B6704102**  
RAILTEC C, 5 modules, Vers. II  
PC (UL 94 V-0)  
light grey  
88x90x58mm



**B6704103**  
RAILTEC C, 5 modules, Vers. II  
PC (UL 94 V-0)  
light grey  
88x90x58mm



**B6704104**  
RAILTEC C, 5 modules, Vers. III  
PC (UL 94 V-0)  
light grey  
88x90x58mm



**B6704105**  
RAILTEC C, 5 modules, Vers. III  
PC (UL 94 V-0)  
light grey  
88x90x58mm

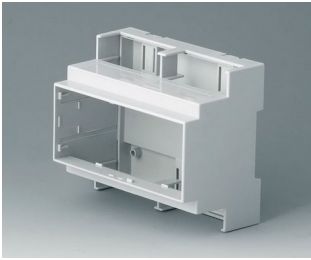


**B6704106**  
RAILTEC C, 5 modules, Vers. IV  
PC (UL 94 V-0)  
light grey  
88x90x58mm

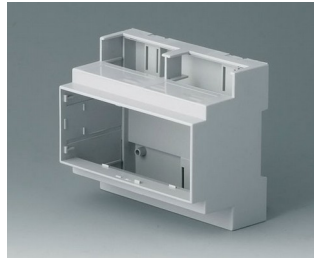


**B6704107**  
RAILTEC C, 5 modules, Vers. IV  
PC (UL 94 V-0)  
light grey  
88x90x58mm

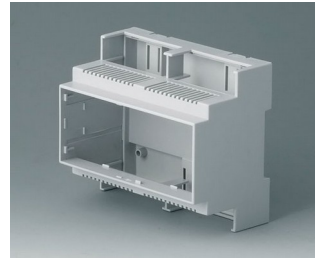
# RAILTEC C 型导轨盒 C



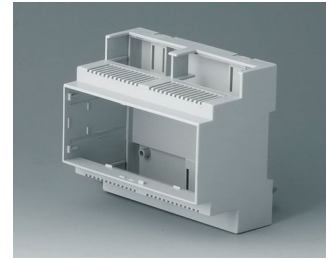
**B6705100**  
RAILTEC C, 6 modules, Vers. I  
PC (UL 94 V-0)  
light grey  
106x90x58mm



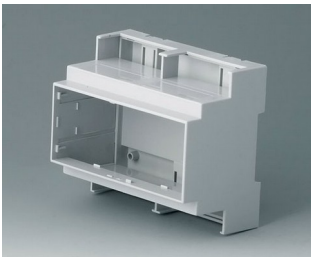
**B6705101**  
RAILTEC C, 6 modules, Vers. I  
PC (UL 94 V-0)  
light grey  
106x90x58mm



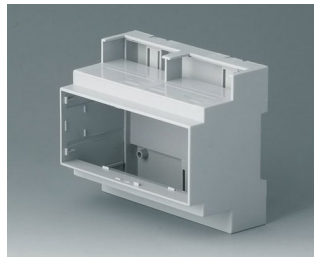
**B6705102**  
RAILTEC C, 6 modules, Vers. II  
PC (UL 94 V-0)  
light grey  
106x90x58mm



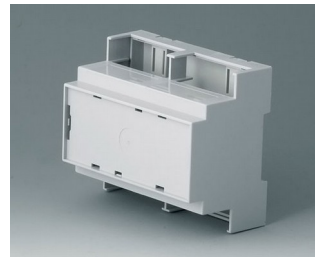
**B6705103**  
RAILTEC C, 6 modules, Vers. II  
PC (UL 94 V-0)  
light grey  
106x90x58mm



**B6705104**  
RAILTEC C, 6 modules, Vers. III  
PC (UL 94 V-0)  
light grey  
106x90x58mm



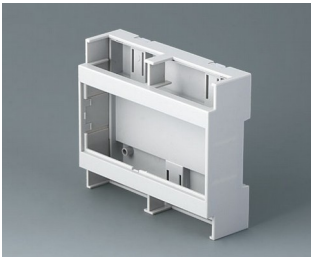
**B6705105**  
RAILTEC C, 6 modules, Vers. III  
PC (UL 94 V-0)  
light grey  
106x90x58mm



**B6705106**  
RAILTEC C, 6 modules, Vers. IV  
PC (UL 94 V-0)  
light grey  
106x90x58mm



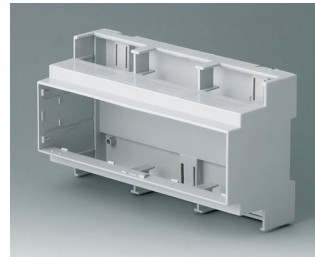
**B6705107**  
RAILTEC C, 6 modules, Vers. IV  
PC (UL 94 V-0)  
light grey  
106x90x58mm



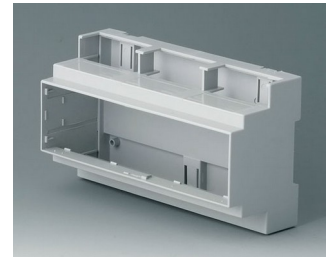
**B6705800**  
RAILTEC C, 6 modules, flat,  
Vers. I  
PC (UL 94 V-0)  
light grey  
106.2x90x32mm



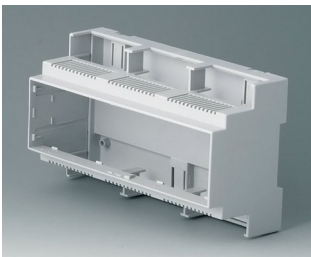
**B6705806**  
RAILTEC C, 6 modules, flat,  
Vers. IV  
PC (UL 94 V-0)  
light grey  
106.2x90x32mm



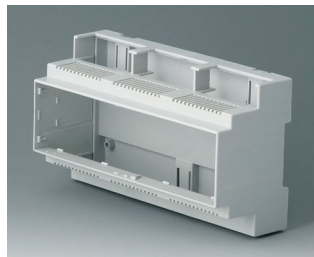
**B6706100**  
RAILTEC C, 9 modules, Vers. I  
PC (UL 94 V-0)  
light grey  
160x90x58mm



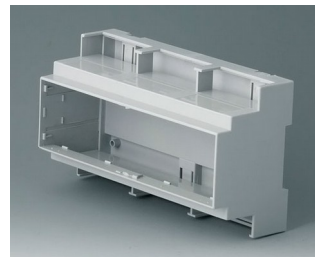
**B6706101**  
RAILTEC C, 9 modules, Vers. I  
PC (UL 94 V-0)  
light grey  
160x90x58mm



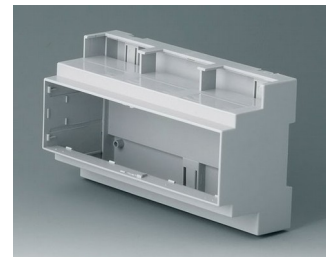
**B6706102**  
RAILTEC C, 9 modules, Vers. II  
PC (UL 94 V-0)  
light grey  
160x90x58mm



**B6706103**  
RAILTEC C, 9 modules, Vers. II  
PC (UL 94 V-0)  
light grey  
160x90x58mm

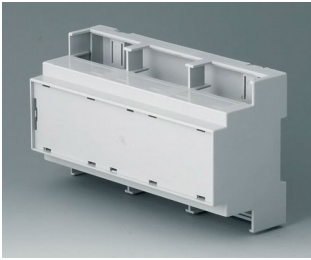


**B6706104**  
RAILTEC C, 9 modules, Vers. III  
PC (UL 94 V-0)  
light grey  
160x90x58mm

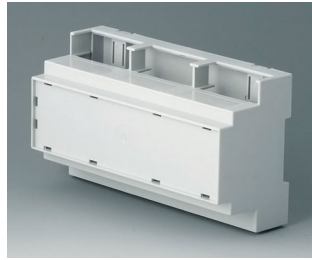


**B6706105**  
RAILTEC C, 9 modules, Vers. III  
PC (UL 94 V-0)  
light grey  
160x90x58mm

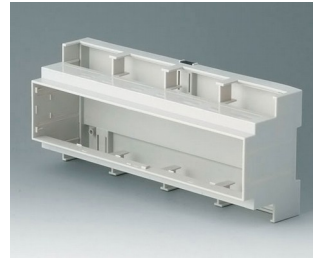
# RAILTEC C 型导轨盒 C



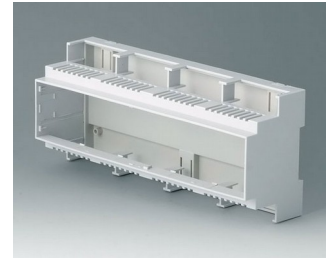
**B6706106**  
RAILTEC C, 9 modules, Vers. IV  
PC (UL 94 V-0)  
light grey  
160x90x58mm



**B6706107**  
RAILTEC C, 9 modules, Vers. IV  
PC (UL 94 V-0)  
light grey  
160x90x58mm



**B6707100**  
RAILTEC C, 12 modules, Vers. I  
PC (UL 94 V-0)  
light grey  
210x90x58mm



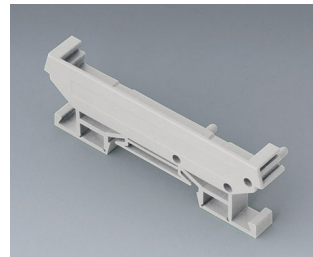
**B6707102**  
RAILTEC C, 12 modules, Vers. II  
PC (UL 94 V-0)  
light grey  
210x90x58mm



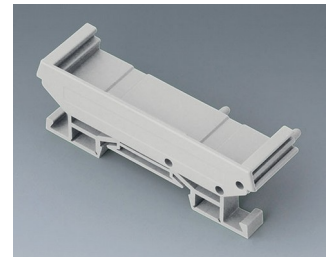
**B6724333**  
RAILTEC SUP. 72, end section  
PA 6 (30) (UL 94 V-0)  
light grey  
82x11.2x16mm



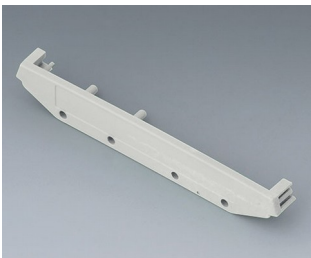
**B6724334**  
RAILTEC SUP. 72, end section  
PA 6 (30) (UL 94 V-0)  
light grey  
82x22.2x16mm



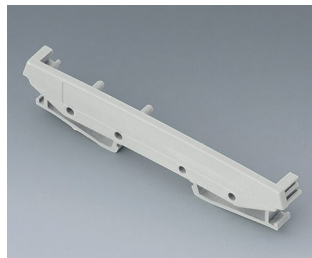
**B6724335**  
RAILTEC SUP. 72, end section  
with foot  
PA 6 (30) (UL 94 V-0)  
light grey  
82x11.2x22.5mm



**B6724336**  
RAILTEC SUP. 72, end section  
with foot  
PA 6 (30) (UL 94 V-0)  
light grey  
82x22.2x22.5mm



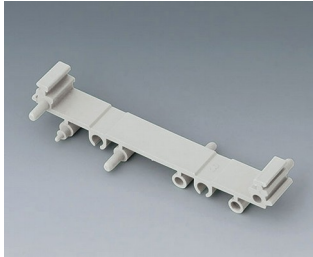
**B6724444**  
RAILTEC SUP. 107, end section  
PA 6 (30) (UL 94 V-0)  
light grey  
118x11.5x17.5mm



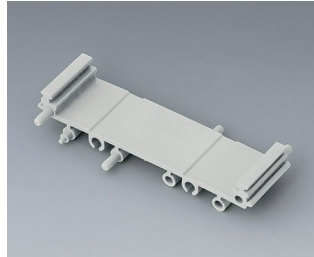
**B6724445**  
RAILTEC SUP. 107, end section  
with foot  
PA 6 (30) (UL 94 V-0)  
light grey  
118x11.5x27.5mm

# RAILTEC C 型导轨盒 C

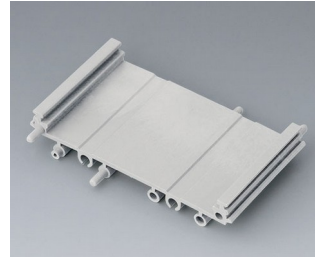
系统组件使产品完整



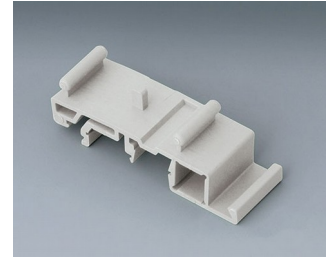
**B6724330**  
RAILTEC SUP. 72, intermediate part  
PA 6 (30) (UL 94 V-0)  
light grey  
82x11.25x16mm



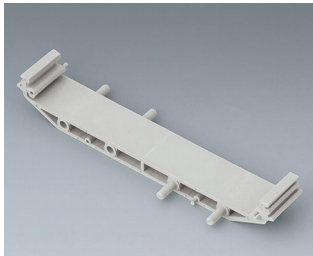
**B6724331**  
RAILTEC SUP. 72, intermediate part  
PA 6 (30) (UL 94 V-0)  
light grey  
82x22.5x16mm



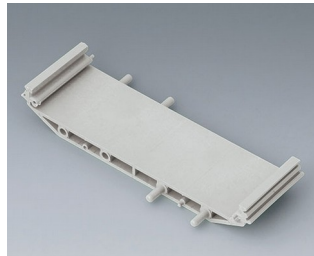
**B6724332**  
RAILTEC SUP. 72, intermediate part  
PA 6 (30) (UL 94 V-0)  
light grey  
82x45x16mm



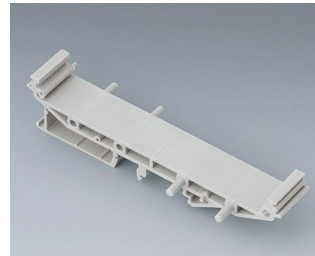
**B6724337**  
RAILTEC SUP. 72, foot  
PA 6 (30) (UL 94 V-0)  
light grey



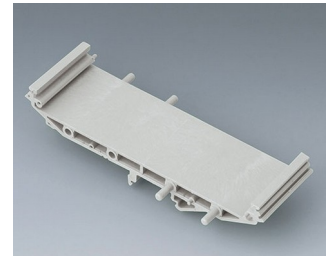
**B6724440**  
RAILTEC SUP. 107, intermediate part  
PA 6 (30) (UL 94 V-0)  
light grey  
118x18.5x17.5mm



**B6724441**  
RAILTEC SUP. 107, intermediate part  
PA 6 (30) (UL 94 V-0)  
light grey  
118x35x17.5mm

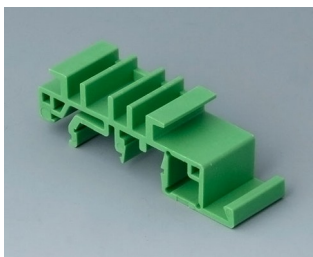


**B6724442**  
RAILTEC SUP. 107, intermediate p. + foot  
PA 6 (30) (UL 94 V-0)  
light grey  
118x18.5x27.5mm



**B6724443**  
RAILTEC SUP. 107, intermediate p. + foot  
PA 6 (30) (UL 94 V-0)  
light grey  
118x35x27.5mm

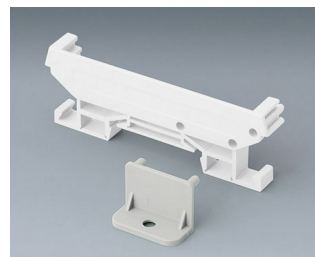
“挂墙支架” 配件



**B6811542**  
Adapter  
PA 6 (UL 94 V-0)  
green



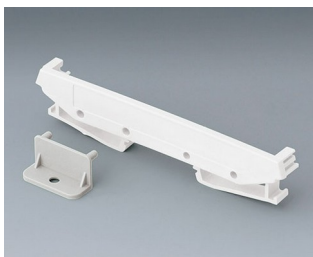
**B6824532**  
Wall suspension element for SUP. 72  
PA 6 (30) (UL 94 V-0)  
light grey



**B6824533**  
Wall suspension element with foot, SUP. 72  
PA 6 (30) (UL 94 V-0)  
light grey



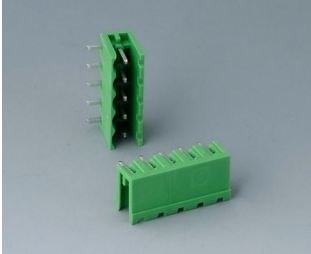
**B6824542**  
Wall suspension element for SUP. 107  
PA 6 (30) (UL 94 V-0)  
light grey



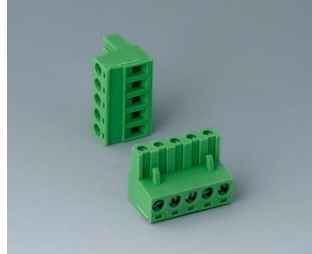
**B6824543**  
Wall suspension element with foot, SUP. 107  
PA 6 (30) (UL 94 V-0)  
light grey

# RAILTEC C 型导轨盒 C

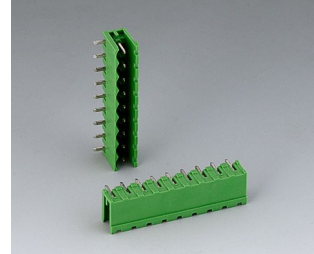
## “端子” 配件



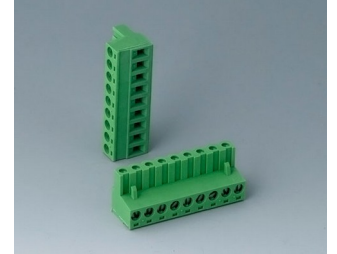
**B6601222**  
Plug header, block 5.08  
PA 6 (UL 94 V-0)



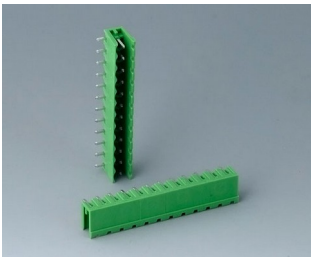
**B6601223**  
Plug header, block 5.08  
PA 6 (UL 94 V-0)



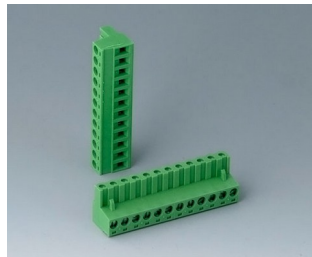
**B6602222**  
Plug header, block 5.08  
PA 6 (UL 94 V-0)



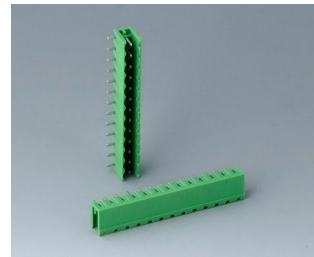
**B6602223**  
Plug header, block 5.08  
PA 6 (UL 94 V-0)



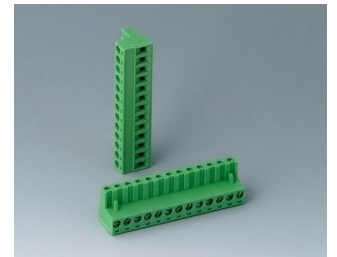
**B6603222**  
Plug header, block 5.08  
PA 6 (UL 94 V-0)



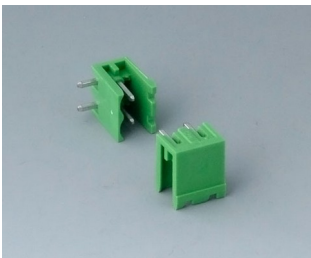
**B6603223**  
Plug header, block 5.08  
PA 6 (UL 94 V-0)



**B6605222**  
Plug header, block 5.08  
PA 6 (UL 94 V-0)



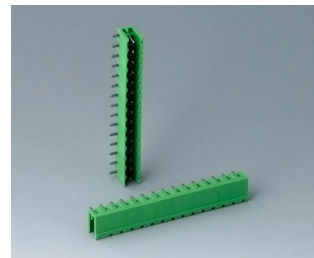
**B6605223**  
Plug header, block 5.08  
PA 6 (UL 94 V-0)



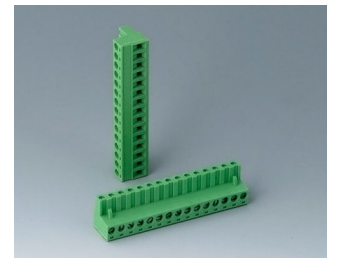
**B6606222**  
Plug header, block 5.08  
PA 6 (UL 94 V-0)



**B6606223**  
Plug header, block 5.08  
PA 6 (UL 94 V-0)



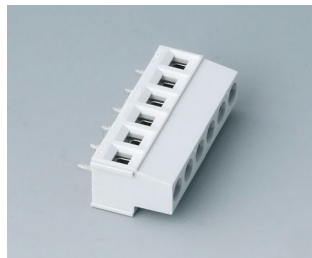
**B6607222**  
Plug header, block 5.08  
PA 6 (UL 94 V-0)



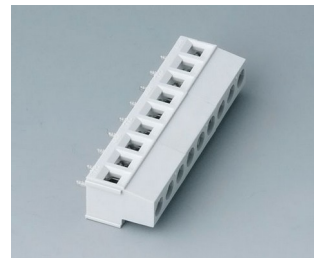
**B6607223**  
Plug header, block 5.08  
PA 6 (UL 94 V-0)



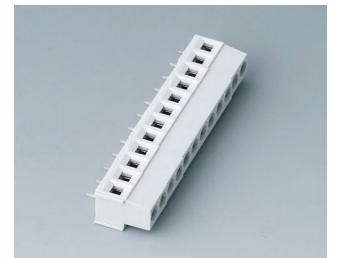
**B6800650**  
Terminal block, block 5.08  
PA 68 (UL 94 V-0)  
light grey



**B6801650**  
Terminal block, block 5.08  
PA 68 (UL 94 V-0)  
light grey

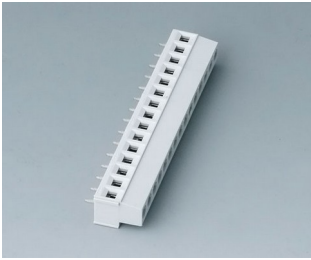


**B6802650**  
Terminal block, block 5.08  
PA 68 (UL 94 V-0)  
light grey



**B6803650**  
Terminal block, block 5.08  
PA 68 (UL 94 V-0)  
light grey

# RAILTEC C 型导轨盒 C



**B6804650**  
Terminal block, block 5.08  
PA 68 (UL 94 V-0)  
light grey

## “端子盖” 配件



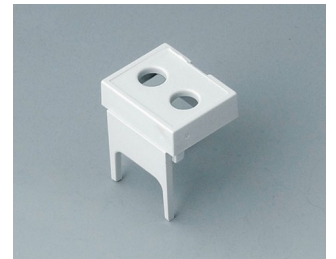
**B6800111**  
Terminal guards, closed  
PC (UL 94 V-0)  
light grey



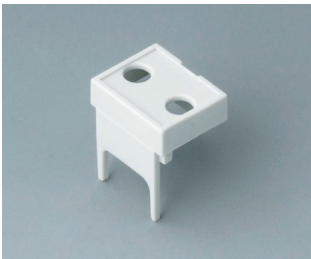
**B6800112**  
Terminal guards, perforated,  
5.08  
PC (UL 94 V-0)  
light grey



**B6800113**  
Terminal guards, with holes, 5.08  
PC (UL 94 V-0)  
light grey



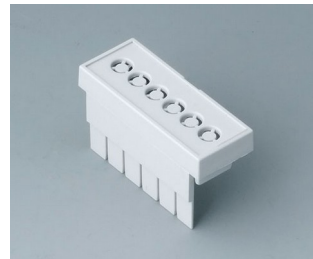
**B6800114**  
Terminal guards, with holes, 7.5  
& 7.62  
PC (UL 94 V-0)  
light grey



**B6800115**  
Terminal guards, with holes,  
7.5 & 7.62  
PC (UL 94 V-0)  
light grey



**B6801111**  
Terminal guards, closed  
PC (UL 94 V-0)  
light grey



**B6801112**  
Terminal guards, perforated,  
5.08  
PC (UL 94 V-0)  
light grey



**B6801113**  
Terminal guards, with holes, 5.08  
PC (UL 94 V-0)  
light grey



**B6801114**  
Terminal guards, with holes, 7.5  
& 7.62  
PC (UL 94 V-0)  
light grey



**B6801115**  
Terminal guards, with holes,  
10.16  
PC (UL 94 V-0)  
light grey



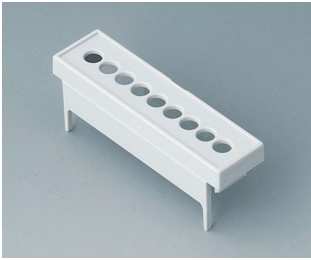
**B6802111**  
Terminal guards, closed  
PC (UL 94 V-0)  
light grey



**B6802112**  
Terminal guards, perforated,  
5.08  
PC (UL 94 V-0)  
light grey



# RAILTEC C 型导轨盒 C



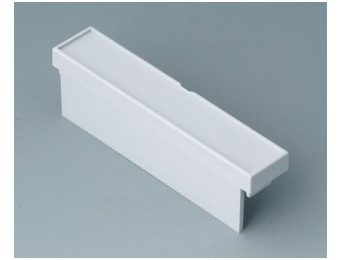
**B6802113**  
Terminal guards, with holes, 5.08  
PC (UL 94 V-0)  
light grey



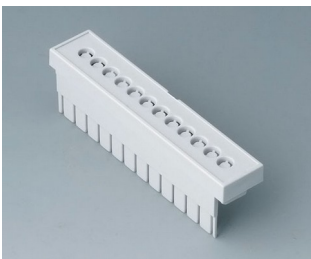
**B6802114**  
Terminal guards, with holes, 7.5  
& 7.62  
PC (UL 94 V-0)  
light grey



**B6802115**  
Terminal guards, with holes,  
10.16  
PC (UL 94 V-0)  
light grey



**B6803111**  
Terminal guards, closed  
PC (UL 94 V-0)  
light grey



**B6803112**  
Terminal guards, perforated,  
5.08  
PC (UL 94 V-0)  
light grey



**B6803113**  
Terminal guards, with holes, 5.08  
PC (UL 94 V-0)  
light grey



**B6803114**  
Terminal guards, with holes, 7.5  
& 7.62  
PC (UL 94 V-0)  
light grey



**B6803115**  
Terminal guards, with holes,  
10.16  
PC (UL 94 V-0)  
light grey



**B6804111**  
Terminal guards, closed  
PC (UL 94 V-0)  
light grey



**B6804112**  
Terminal guards, perforated,  
5.08  
PC (UL 94 V-0)  
light grey



**B6804113**  
Terminal guards, with holes, 5.08  
PC (UL 94 V-0)  
light grey



**B6804114**  
Terminal guards, with holes, 7.5  
& 7.62  
PC (UL 94 V-0)  
light grey



**B6804115**  
Terminal guards, with holes,  
10.16  
PC (UL 94 V-0)  
light grey

# RAILTEC C 型导轨盒 C

## 附件



**B6800100**  
Front panel, 1 module  
PC (UL 94 V-0)  
light grey  
14x42mm



**B6800200**  
Front panel, 1 module  
PC (UL 94 V-0)  
transparent  
14x42mm



**B6801100**  
Front panel, 2 modules  
PC (UL 94 V-0)  
light grey  
32x42mm



**B6801200**  
Front panel, 2 modules  
PC (UL 94 V-0)  
transparent  
32x42mm



**B6802100**  
Front panel, 3 modules  
PC (UL 94 V-0)  
light grey  
49x42mm



**B6802200**  
Front panel, 3 modules  
PC (UL 94 V-0)  
transparent  
49x42mm



**B6803100**  
Front panel, 4 modules  
PC (UL 94 V-0)  
light grey  
67x42mm



**B6803200**  
Front panel, 4 modules  
PC (UL 94 V-0)  
transparent  
67x42mm



**B6804100**  
Front panel, 5 modules  
PC (UL 94 V-0)  
light grey  
84x42mm



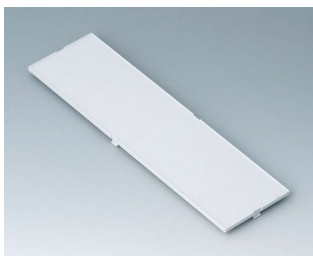
**B6804200**  
Front panel, 5 modules  
PC (UL 94 V-0)  
transparent  
84x42mm



**B6805100**  
Front panel, 6 modules  
PC (UL 94 V-0)  
light grey  
102x42mm



**B6805200**  
Front panel, 6 modules  
PC (UL 94 V-0)  
transparent  
102x42mm



**B6806100**  
Front panel, 9 modules  
PC (UL 94 V-0)  
light grey  
155x42mm



**B6806200**  
Front panel, 9 modules  
PC (UL 94 V-0)  
transparent  
155x42mm



**B6807100**  
Front panel, 12 modules  
PC (UL 94 V-0)  
light grey  
207.5x42mm