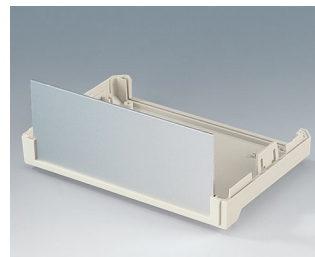
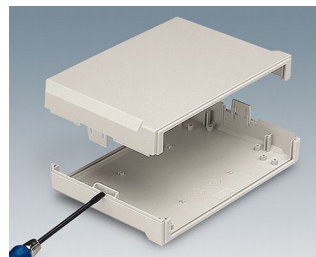
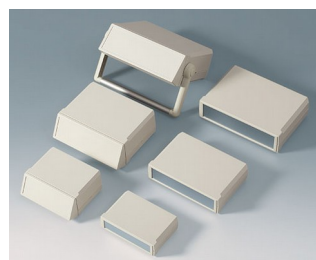


MOTEC 大接口面机盒

接口面积特大的机盒

具备宽敞舒适的操作和接口表面是 MOTEC 大接口面桌式机盒与传统机盒系统的主要区别。

- 现代化、 时髦的设计款式
- 3 种规格
- 不同的机盒高度达到不同的应用配置
- 优质材料 ABS (UL 94 HB)
- 通过无螺钉的外壳组装方式，达到最小的装配工作量; 利用扁头螺丝刀解锁
- 符合人体工程学的倾斜操作面板具有用于保护膜键盘的凹槽表面，作为附件
- 铝合金前面板作为附件
- 携带提手可作为机盒的桌面支架和移动提手
- 自粘、透明的盒脚确保机盒的安全稳立
- 防护等级 IP 40
- 导槽用于分隔板和电路板的垂直插入安装
- 固定柱用于固定电路板等



MOTEC 大接口面机盒

应用示例

- 测量和控制技术
- 工艺工程控制
- 计算机外围设备和界面接口
- 开关控制和调制解调器
- 医疗和实验室技术领域



Rhinospirometer



Telemetry system with cordless sensors

按客户要求修改加工

如何体现您的特殊产品？如有需要，我们执行所有必要的修改和精加工，提供组装完毕的机盒。
产品类型用于 Motec 大接口面机盒



机械加工



表面涂渡



图文打印



激光打印字体



装饰膜



特殊材质



EMC 保护



制备 / 组装

MOTEC 大接口面机盒

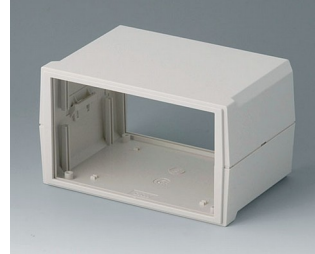
类型



B3015117
MOTEC S, flat/flat
ABS (UL 94 HB)
off-white RAL 9002
155x105x40mm
IP 40



B3015127
MOTEC S, flat/high
ABS (UL 94 HB)
off-white RAL 9002
155x105x65mm
IP 40



B3015137
MOTEC S, high/high
ABS (UL 94 HB)
off-white RAL 9002
155x105x90mm
IP 40



B3020117
MOTEC M, flat/flat
ABS (UL 94 HB)
off-white RAL 9002
205x140x50mm
IP 40



B3020127
MOTEC M, flat/high
ABS (UL 94 HB)
off-white RAL 9002
205x140x75mm
IP 40



B3020137
MOTEC M, high/high
ABS (UL 94 HB)
off-white RAL 9002
205x140x100mm
IP 40



B3020147
MOTEC M, with handle bar
ABS (UL 94 HB)
off-white RAL 9002
205x140x75mm
IP 40



B3023117
MOTEC-L, flat/flat
ABS (UL 94 HB)
off-white RAL 9002
235x165x60mm
IP 40



B3023127
MOTEC L, flat/high
ABS (UL 94 HB)
off-white RAL 9002
235x165x85mm
IP 40



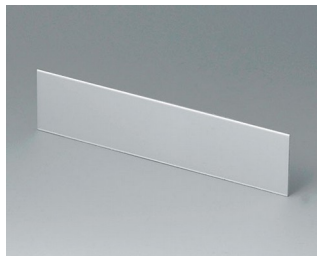
B3023137
MOTEC L, high/high
ABS (UL 94 HB)
off-white RAL 9002
235x165x110mm
IP 40



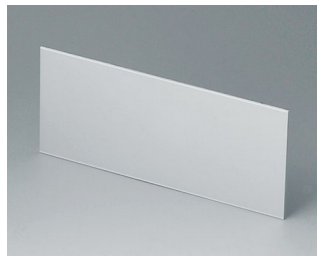
B3023147
MOTEC L, with handle bar
ABS (UL 94 HB)
off-white RAL 9002
235x165x85mm
IP 40

MOTEC 大接口面机盒

需加附件使产品完整



B3115100
Front / rear panel S
Aluminium
matt anodised
136x32x1.5mm



B3115110
Front / rear panel S
Aluminium
matt anodised
136x57x1.5mm



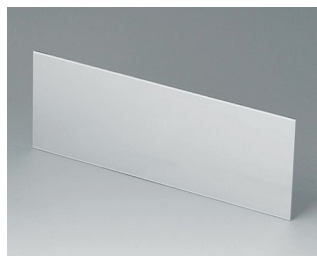
B3115120
Front / rear panel S
Aluminium
matt anodised
136x82x1.5mm



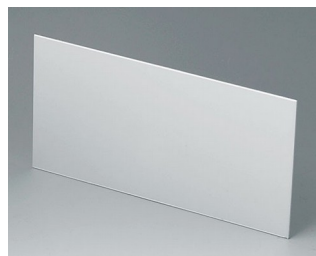
B3115167
Sloping control panel S, flat/high
ABS (UL 94 HB)
off-white RAL 9002



B3120100
Front / rear panel M
Aluminium
matt anodised
185x42x1.5mm



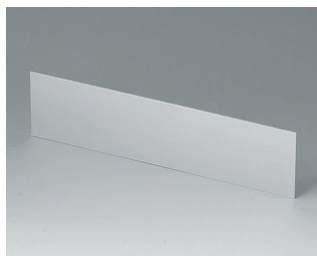
B3120110
Front / rear panel M
Aluminium
matt anodised
185x67x1.5mm



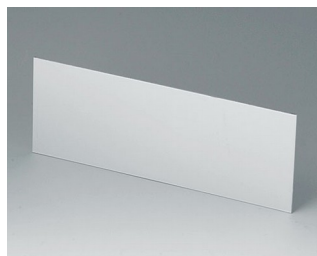
B3120120
Front / rear panel M
Aluminium
matt anodised
185x92x1.5mm



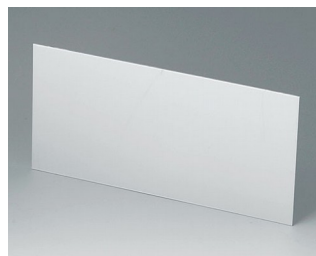
B3120167
Sloping control panel M, flat/high
ABS (UL 94 HB)
off-white RAL 9002



B3123100
Front / rear panel L
Aluminium
matt anodised
214x52x1.5mm



B3123110
Front / rear panel L
Aluminium
matt anodised
214x77x1.5mm



B3123120
Front / rear panel L
Aluminium
matt anodised
214x102x1.5mm



B3123167
Sloping control panel L, flat/high
ABS (UL 94 HB)
off-white RAL 9002



B3123177
Sloping control panel L,
high/high
ABS (UL 94 HB)
off-white RAL 9002

MOTEC 大接口面机盒

“螺钉” 附件



A9199008
Set of screws

保留技术更改可能性。© OKW 机盒系统, Buchen/德国。