

## 支架、机盒脚

- 适配小型塑料机盒并可自由放置的支架，提供符合人体工程学的良好阅读角度。
- 有或无折叠脚的通用脚支架，以及不同尺寸的自粘防滑脚确保了桌子应用的安全稳固使用。



### 按客户要求修改加工

如何体现您的特殊产品？如有需要，我们执行所有必要的修改和精加工，提供组装完毕的机盒。  
产品类型用于 支架、机盒脚



机械加工



图文打印



激光打印字体



特殊材质



制备 / 组装

# 支架、机盒脚

## 类型



**A0350007**  
Tilt foot  
ABS (UL 94 HB)  
off-white RAL 9002



**A0350008**  
Tilt foot  
ABS (UL 94 HB)  
pebble grey RAL 7032



**A9152057**  
Tilt foot bar  
ABS (UL 94 HB)  
off-white RAL 9002



**A9152058**  
Tilt foot bar  
ABS (UL 94 HB)  
lava



**A9152059**  
Tilt foot bar  
ABS (UL 94 HB)  
black RAL 9005



**A9209229**  
Anti-slide feet 8.5 x 2.2 mm  
black



**A9210180**  
Anti-slide feet 10,1 x 1.8 mm  
transparent



**A9210290**  
Anti-slide feet 9.5 x 3.8 mm  
transparent



**A9212330**  
Anti-slide feet 12 x 3.5 mm  
transparent



**A9250807**  
Tilt foot bar  
ABS (UL 94 HB)  
off-white RAL 9002



**A9250809**  
Tilt foot bar  
ABS (UL 94 HB)  
black RAL 9005



**A9250817**  
Tilt foot bar  
ABS (UL 94 HB)  
off-white RAL 9002



**A9250819**  
Tilt foot bar  
ABS (UL 94 HB)  
black RAL 9005



**A9257105**  
Case feet, Vers. I  
ABS (UL 94 HB)  
light grey RAL 7035



**A9257107**  
Case feet, Vers. I  
ABS (UL 94 HB)  
off-white RAL 9002



**A9257109**  
Case feet, Vers. I  
ABS (UL 94 HB)  
black RAL 9005

# 支架、机盒脚



**A9257205**  
Case feet, Vers. II  
ABS (UL 94 HB)  
light grey RAL 7035



**A9257207**  
Case feet, Vers. II  
ABS (UL 94 HB)  
off-white RAL 9002



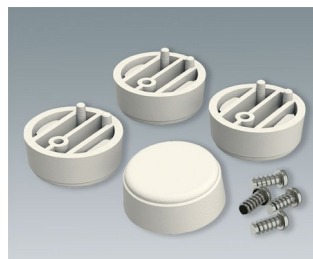
**A9257209**  
Case feet, Vers. II  
ABS (UL 94 HB)  
black RAL 9005



**A9257404**  
Case feet, Vers. I  
ABS (UL 94 HB)  
anthracite grey RAL 7016  
ø30x12mm



**A9257405**  
Case feet, Vers. I  
ABS (UL 94 HB)  
light grey RAL 7035  
ø30x12mm



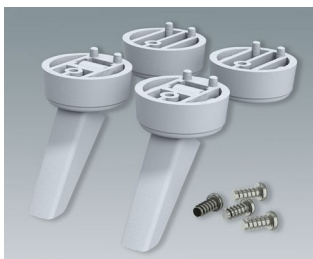
**A9257407**  
Case feet, Vers. I  
ABS (UL 94 HB)  
off-white RAL 9002  
ø30x12mm



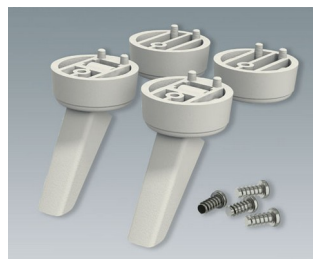
**A9257409**  
Case feet, Vers. I  
ABS (UL 94 HB)  
black RAL 9005  
ø30x12mm



**A9257504**  
Case feet, Vers. II  
ABS (UL 94 HB)  
anthracite grey RAL 7016  
ø30x12mm



**A9257505**  
Case feet, Vers. II  
ABS (UL 94 HB)  
light grey RAL 7035  
ø30x12mm



**A9257507**  
Case feet, Vers. II  
ABS (UL 94 HB)  
off-white RAL 9002  
ø30x12mm



**A9257509**  
Case feet, Vers. II  
ABS (UL 94 HB)  
black RAL 9005  
ø30x12mm

## 附件



**A9207150**  
Anti-slide feet 6.5 x 2 mm  
transparent

# 支架、机盒脚

保留技术更改可能性。© OKW 机盒系统, Buchen/德国。