

STAR-KNOBS 星亮旋钮

现代式带照明旋钮

OKW 的 STAR-KNOBS 星亮旋钮系列设计为具有旋转功能的操作元件，带相应的旋转脉冲发生器，并具备用于菜单控制界面的敲击功能。只需一个旋钮就可以操作多种功能。可选择的照明型式突出了现代设备的设计款式形象。

- 创新的旋钮设计款式提供内置或外置安装型式
- 齐平安装式使 STAR-KNOBS 星亮旋钮和设备表面之间形成了一个优美的形状过渡，如有需要，半透明型旋钮可以带照明，既外环和钮盖之间有一个发光环
- 外置安装式通过其微倾于内轴的外环结构体现了旋钮的特殊设计款式，从而实现了符合人体工程学的良好操作性能；旋钮装置于一个约 3 毫米高的光环上，光环可以根据要求照亮
- 采用现代化的节能 SMD LED 照明技术，转换电源 5 V：可选择白色背光，适配光环颜色为钻石、翡翠和蓝宝石色；或采用 RGB 背光，用于独特灯光效果制作，作为配件
- 无或带防滑豆的旋钮
- 钮盖可选无或带手指凹陷区利于操作
- 经过验证的卡夹式夹头安装使操作安全
- 最大扭矩：安装时 = 1,5 Nm, 操作时 = 1,2 Nm

旋钮尺寸规格 轴孔规格

ø 33 mm	6 mm、 1/4"
ø 41 mm	6 mm

一个 **STAR-KNOBS** 星亮旋钮的最起码组件:

1 个旋钮、1 个盖子、1 套安装套件

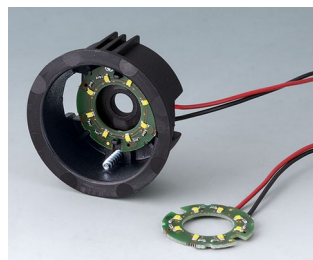
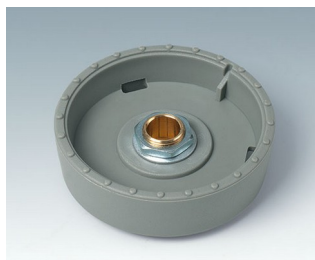
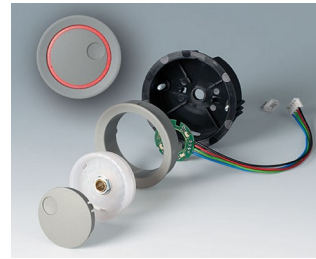
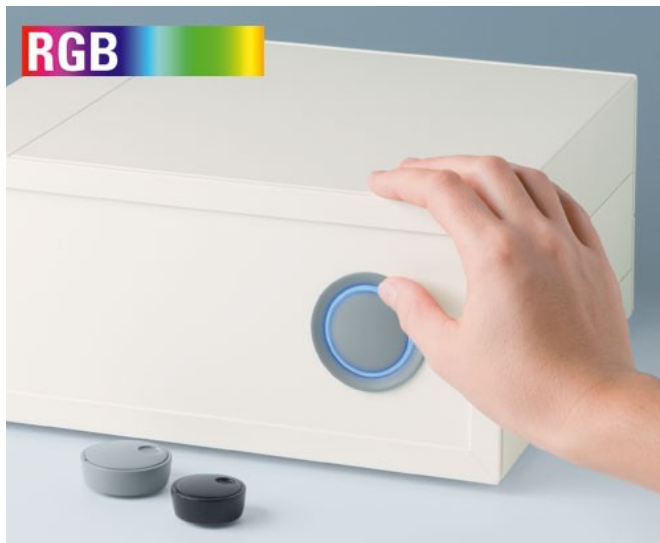
照明注意事项:

类型 内置安装型式 请选择半透明型旋钮 (颜色: 钻石, 翡和蓝宝石色)。

类型 外置安装型式 请选择半透明型安装套件 (颜色: 钻石、翡翠和蓝宝石色)。

白色背光或 RGB 背光作为配件。

STAR-KNOBS 星亮旋钮



应用示例

适配安装于符合 DIN 41591 标准的带圆轴端的旋转电位器和旋转脉冲发生器，可选带敲击功能。

- 测量和控制技术
- 医疗和实验室技术
- 健康和医疗保健技术
- 暖气和空调设施
- 通信技术
- 建筑领域
- Smart Factory



Control element for respiratory assistance apparatus



Control unit for photovoltaic solar installations



Heater for blood, blood substitutes and infusion solutions



Multiple analytical resonance system

按客户要求修改加工

STAR-KNOBS 星亮旋钮

如何体现您的特殊产品？如有需要，我们执行所有必要的修改和精加工，提供组装完毕的机盒。
产品类型用于 Star-Knobs 星亮旋钮



机械加工



表面涂渡



图文打印



激光打印字体



制备 / 组装

类型



B8733118
Assembly kit 33, flush fitting
version
PA 6
volcano



B8733119
Assembly kit 33, flush fitting
version
PA 6
nero



B8733201
Assembly kit 33, surface-
mounted version
PC (UL 94 HB)
diamond



B8733206
Assembly kit 33, surface-
mounted version
PC (UL 94 HB)
sapphire



B8733218
Assembly kit 33, surface-
mounted version
PA 6
volcano



B8733219
Assembly kit 33, surface-
mounted version
PA 6
nero



B8741118
Assembly kit 41, flush fitting
version
PA 6
volcano



B8741119
Assembly kit 41, flush fitting
version
PA 6
nero

STAR-KNOBS 星亮旋钮



B8741201
Assembly kit 41, surface-mounted version
PC (UL 94 HB)
diamond



B8741206
Assembly kit 41, surface-mounted version
PC (UL 94 HB)
sapphire



B8741218
Assembly kit 41, surface-mounted version
PA 6
volcano



B8741219
Assembly kit 41, surface-mounted version
PA 6
nero

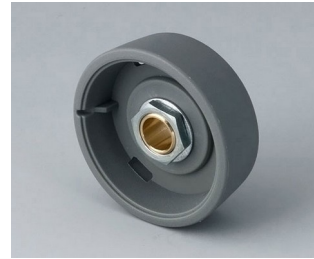
系统组件使产品完整



B8033068
STAR-KNOBS 33
PA 6
volcano
33x14mm 6mm



B8033069
STAR-KNOBS 33
PA 6
nero
33x14mm 6mm



B8033638
STAR-KNOBS 33
PA 6
volcano
33x14mm 1/4"



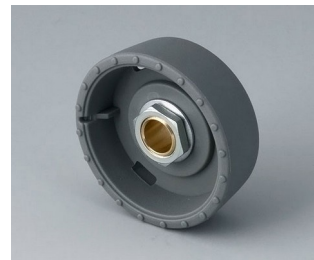
B8033639
STAR-KNOBS 33
PA 6
nero
33x14mm 1/4"



B8041068
STAR-KNOBS 41
PA 6
volcano
41x14mm 6mm



B8041069
STAR-KNOBS 41
PA 6
nero
41x14mm 6mm



B8133068
STAR-KNOBS 33, with knurls
PA 6
volcano
33x14mm 6mm



B8133069
STAR-KNOBS 33, with knurls
PA 6
nero
33x14mm 6mm



B8133638
STAR-KNOBS 33, with knurls
PA 6
volcano
33x14mm 1/4"



B8133639
STAR-KNOBS 33, with knurls
PA 6
nero
33x14mm 1/4"



B8141068
STAR-KNOBS 41, with knurls
PA 6
volcano
41x14mm 6mm



B8141069
STAR-KNOBS 41, with knurls
PA 6
nero
41x14mm 6mm

STAR-KNOBS 星亮旋钮



B8233061
STAR-KNOBS 33
PC (UL 94 HB)
diamond
33x14mm 6mm



B8233065
STAR-KNOBS 33
PC (UL 94 HB)
emerald
33x14mm 6mm



B8233066
STAR-KNOBS 33
PC (UL 94 HB)
sapphire
33x14mm 6mm



B8233631
STAR-KNOBS 33
PC (UL 94 HB)
diamond
33x14mm 1/4"



B8233635
STAR-KNOBS 33
PC (UL 94 HB)
emerald
33x14mm 1/4"



B8233636
STAR-KNOBS 33
PC (UL 94 HB)
sapphire
33x14mm 1/4"



B8241061
STAR-KNOBS 41
PC (UL 94 HB)
diamond
41x14mm 6mm



B8241065
STAR-KNOBS 41
PC (UL 94 HB)
emerald
41x14mm 6mm



B8241066
STAR-KNOBS 41
PC (UL 94 HB)
sapphire
41x14mm 6mm



B8333061
STAR-KNOBS 33, with knurls
PC (UL 94 HB)
diamond
33x14mm 6mm



B8333065
STAR-KNOBS 33, with knurls
PC (UL 94 HB)
emerald
33x14mm 6mm



B8333066
STAR-KNOBS 33, with knurls
PC (UL 94 HB)
sapphire
33x14mm 6mm



B8333631
STAR-KNOBS 33, with knurls
PC (UL 94 HB)
diamond
33x14mm 1/4"



B8333635
STAR-KNOBS 33, with knurls
PC (UL 94 HB)
emerald
33x14mm 1/4"

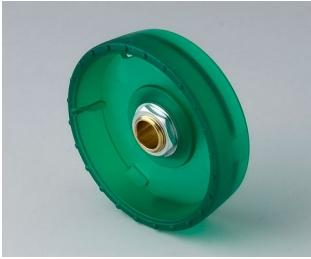


B8333636
STAR-KNOBS 33, with knurls
PC (UL 94 HB)
sapphire
33x14mm 1/4"



B8341061
STAR-KNOBS 41, with knurls
PC (UL 94 HB)
diamond
41x14mm 6mm

STAR-KNOBS 星亮旋钮



B8341065
STAR-KNOBS 41, with knurls
PC (UL 94 HB)
emerald
41x14mm 6mm



B8341066
STAR-KNOBS 41, with knurls
PC (UL 94 HB)
saphire
41x14mm 6mm



B8633008
Cover 33
PA 6
volcano



B8633009
Cover 33
PA 6
nero



B8633108
Cover 33, with finger recess
PA 6
volcano



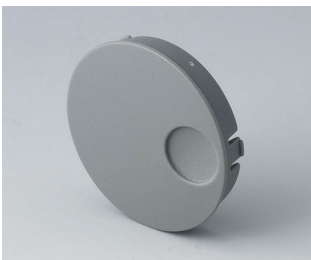
B8633109
Cover 33, with finger recess
PA 6
nero



B8641008
Cover 41
PA 6
volcano



B8641009
Cover 41
PA 6
nero

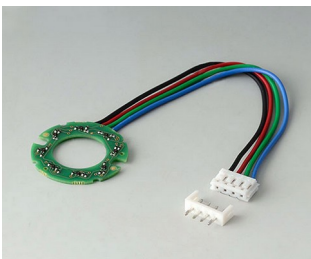


B8641108
Cover 41, with finger recess
PA 6
volcano

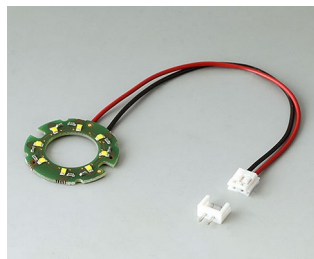


B8641109
Cover 41, with finger recess
PA 6
nero

“照明” 配件



B7546001
LED illumination kit, 8 LEDs
(RGB backlight)



B8733004
LED illumination kit

STAR-KNOBS 星亮旋钮

附件



A6207009
Round nut M7 x 0.75



A6210009
Round nut M10 x 0.75



A6295009
Round nut 3/8"-32G



A6300000
Spanner



B8733001
Assembly support 33
ABS (UL 94 HB)
green



B8741001
Assembly support 41
ABS (UL 94 HB)
green

保留技术更改可能性。© OKW 机盒系统, Buchen/德国。