

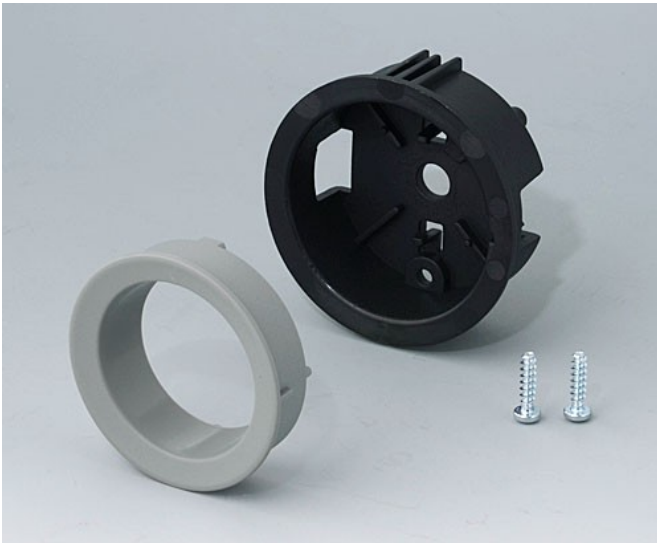
# B8733118

## Assembly kit 33, flush fitting version

Flush-fitting version: For flush-fitting installation in the built-in version with an attractive transition from the knob to the front of the device. Suitable for knob diameter 33. Optional illumination possible only in conjunction with the translucent knob (colours diamond, ruby, emerald or sapphire).

### Supply

1 assembly kit



保留技术更改可能性。© OKW 机盒系统, Buchen/德国。